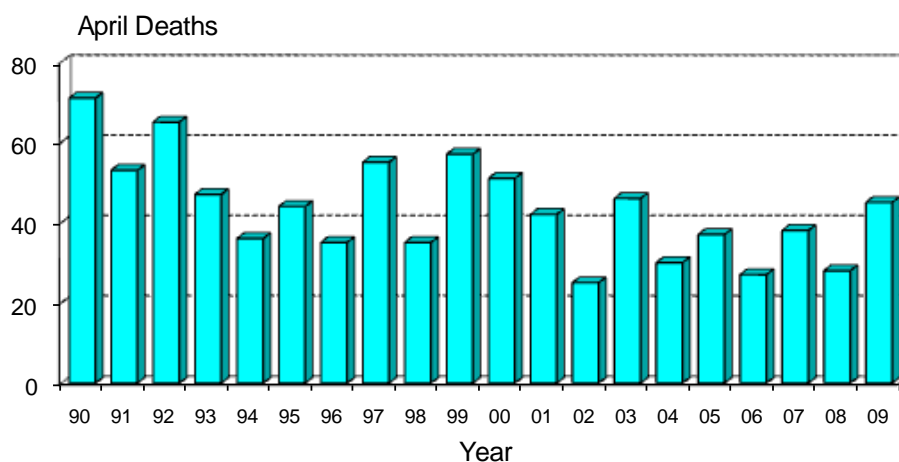


Monthly Road Crash Stats Update

April Road Deaths (2009)

The data presented here are provisional. Crash data as at – 12th May 2009

- Forty-five people died on New Zealand roads in April. This is 17 more than the number of deaths for April 2008 and is 10 more than the average April toll for the last five years.



- To the end of April this year 152 people have died on New Zealand roads. This is 16 more than at the same time last year.
- In the 12 months to the end of April 2009, 382 people were killed on our roads. This is 40 fewer than the number of deaths in the 12 months to the end of April 2008.
- During April, 21 of the deaths were car or van drivers, 15 were car or van passengers, five were motorcyclists, three were pedestrians and one was a truck driver.
- Twenty-eight of the 45 killed were in open road crashes. Seventeen were in single vehicle crashes in which a driver lost control of the vehicle or ran off the road, 12 were in head-on crashes and nine were in intersection collisions.
- Of the 37 vehicle occupants killed, 14 were not restrained at the time of the crash.

Deaths and Police reported injuries by age, sex and type of road user

Deaths are for the 12 months to the end of April 2009. Reported injuries are for the 12 months to the end of October 2008.

Note: Preliminary fatal crash reports are submitted within 24 hours of a crash related death. Full injury crash reports are submitted only after the crash investigations are completed, so there is a lag in the reporting of injury crashes.

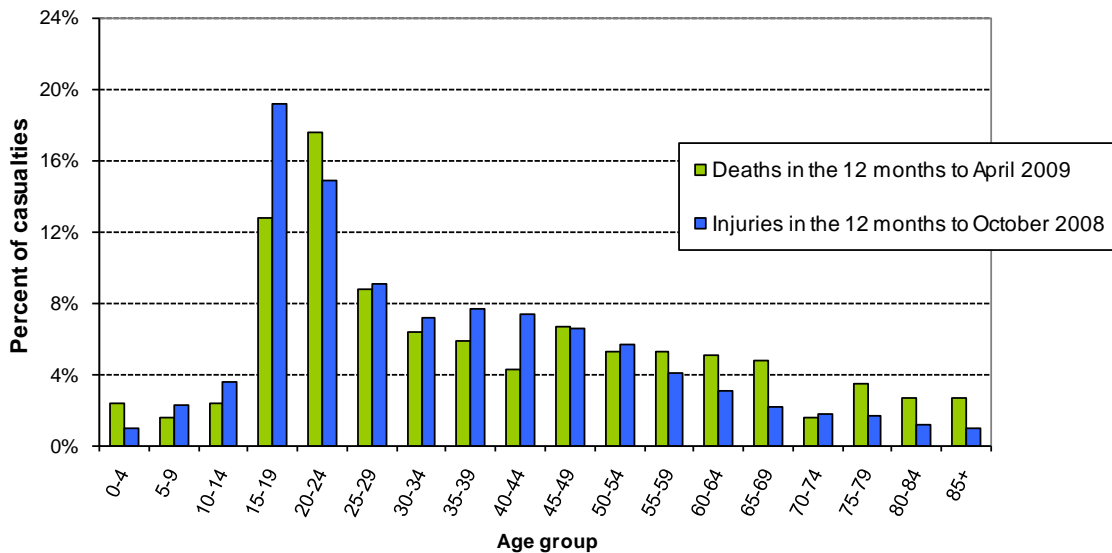
Road user type by sex

Sex	Drivers		Passengers		Motorcyclists		Pedestrians		Cyclists		Other		Total	
	Killed	Injured	Killed	Injured	Killed	Injured	Killed	Injured	Killed	Injured	Killed	Injured	Killed	Injured
Male	119	4829	59	1554	54	1120	23	527	6	658	1	32	262	8720
Female	56	3753	43	1882	5	257	10	437	4	256	2	14	120	6599
Total	175	8582	102	3436	59	1377	33	964	10	914	3	46	382	15319
% male	68%	56%	58%	45%	92%	81%	70%	55%	60%	72%	33%	70%	69%	57%

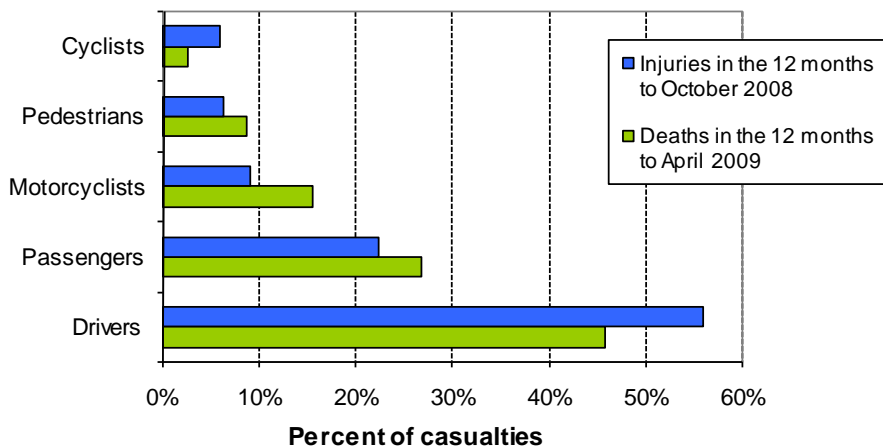
Road user type by age group

Age group	Drivers		Passengers		Motorcyclists		Pedestrians		Cyclists		Other		Total	
	Killed	Injured	Killed	Injured	Killed	Injured	Killed	Injured	Killed	Injured	Killed	Injured	Killed	Injured
Under-15	1	20	15	596	1	27	6	228	1	155	0	9	24	1035
15-24	49	2783	44	1444	12	420	7	210	2	176	0	9	114	5042
25-34	27	1557	12	365	13	257	4	94	1	132	0	3	57	2408
35-44	20	1445	3	247	11	274	3	94	1	174	0	1	38	2235
45-54	27	1191	2	169	14	250	1	80	1	136	0	0	45	1826
55-64	14	702	13	135	4	99	5	57	3	72	0	3	39	1068
65-74	15	393	3	100	3	17	2	52	1	21	0	7	24	590
75+	19	384	7	99	1	8	3	60	0	8	3	11	33	570
Unknown	3	107	3	281	0	25	2	89	0	40	0	3	8	545
Total	175	8582	102	3436	59	1377	33	964	10	914	3	46	382	15319

Deaths and reported injuries by age group

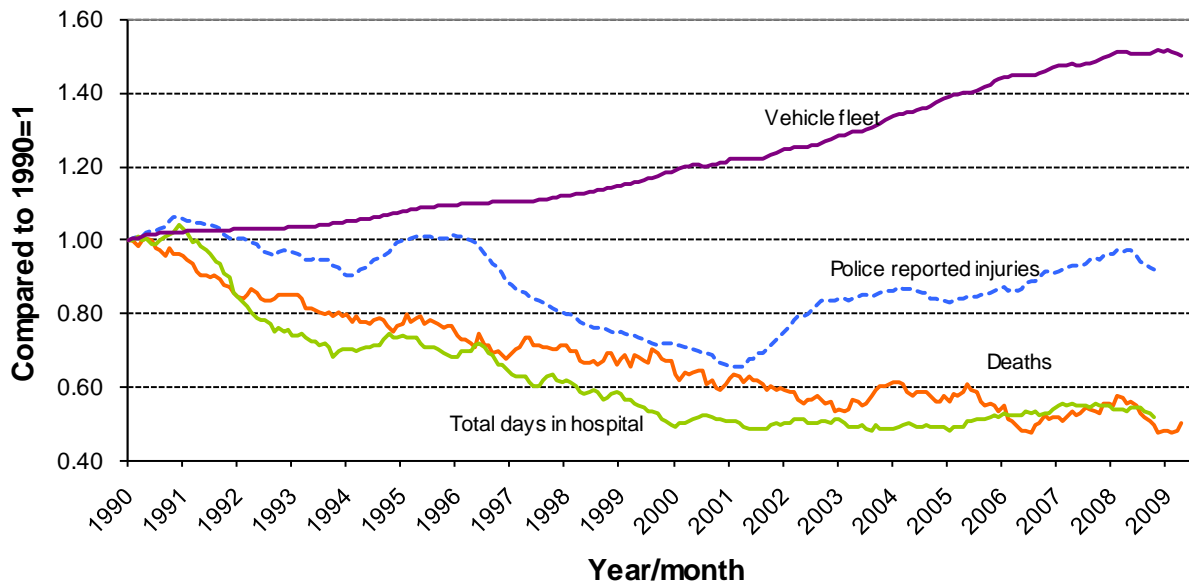


Types of road users killed and injured



Trends

Road crash casualties and vehicle fleet compared to 1990



Since 1990 the number of vehicles on the road has increased by 50% while Police reported injuries have dropped by 8%, road deaths have dropped by 50% and the number of days spent in hospital as a result of road crashes has dropped by 48%.

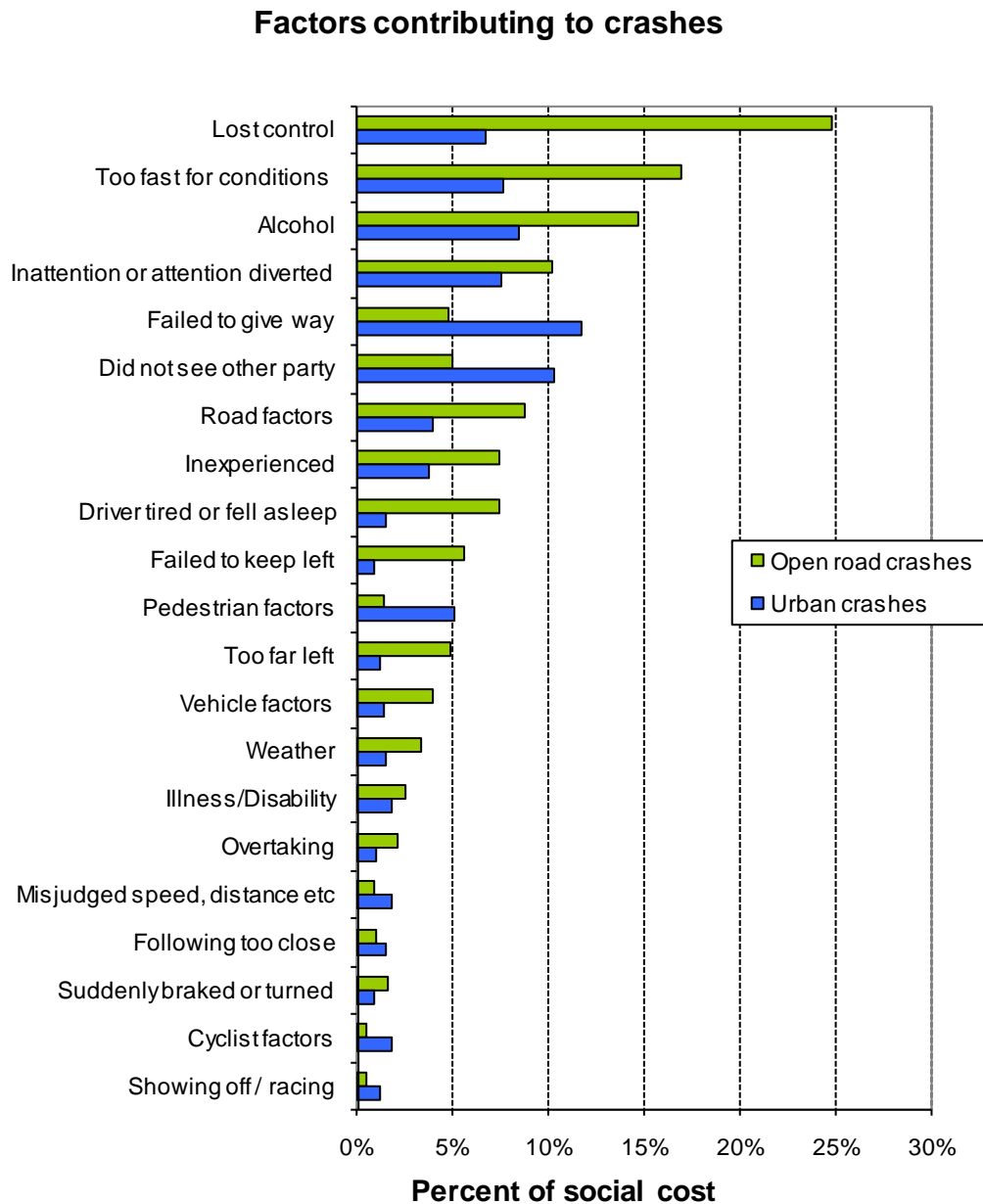
Crash outcomes and road user behaviour

	2000	2001	2002	2003	2004	2005	2006	2007	2008	2009
Road Crash Data										
Deaths										
Number of road deaths	462	455	405	461	435	405	393	421	366	382
Deaths per 10,000 vehicles	1.8	1.7	1.5	1.6	1.5	1.3	1.3	1.3	1.1	1.2
Deaths per 100,000 people	12.1	11.8	10.3	11.5	10.7	9.9	9.5	10.0	8.6	8.9
Injuries										
Reported injuries	10962	12368	13918	14372	13890	14456	15174	16013	15319	
Number hospitalised (all discharges)	5990	6700	6530	6540	6580	7210	7680	7440	7263	
Number hospitalised for over 1 day [#]	2846	2880	2750	2720	2710	2860	3020	3060	2898	
Number hospitalised for over 3 days [#]	1815	1794	1740	1700	1700	1840	1900	1990	1869	
Behavioural Measures										
Speed										
Rural speed, % over 100 km/h	52%	47%	43%	39%	39%	36%	32%	29%	30%	
Rural speed, mean (km/h)	101.1	100.2	99.1	98	97.8	97.1	96.4	96.3	96.6	
Rural speed, 85th percentile (km/h)	111	109	107	105	105	104	103	103	103	
Alcohol										
Number of drivers killed with excess alcohol	58	55	60	70	69	58	54	65	59	
Percent of drivers killed with excess alcohol	21%	21%	24%	27%	27%	25%	24%	27%	28%	
Occupant Restraints										
Seat belts worn by adults, front	90%	92%	92%	92%	94%	95%	95%	95%	95%	
Seat belts worn by adults, rear	76%	70%	78%	81%	86%	86%	89%	87%	87%	
Children restrained, 0-14 years	87%	89%	94%	96%	97%	94%	96%	94%	97%	
Child restraints used, 0-4 years	79%	82%	86%	86%	87%	89%	91%	91%	90%	
Cycle helmets										
Cycle helmets worn, weekday	93%	94%	89%	89%	92%	91%	94%	92%	92%	

[#] Includes only the first stay in hospital

Note: Road deaths for 2009 are for the 12 months to the end of April 2009. Reported injuries for 2008 are for the 12 months to the end of October 2008.

Factors contributing to crashes – ranked by social cost*



Notes: Crash data for the 12 months to end of October 2008

Since there can be several contributing factors for a single crash the figures represented in this graph add to more than 100%.

* Social cost calculations include loss of life or life quality, loss of output due to injuries, medical and rehabilitation costs, legal and court costs and property damage.