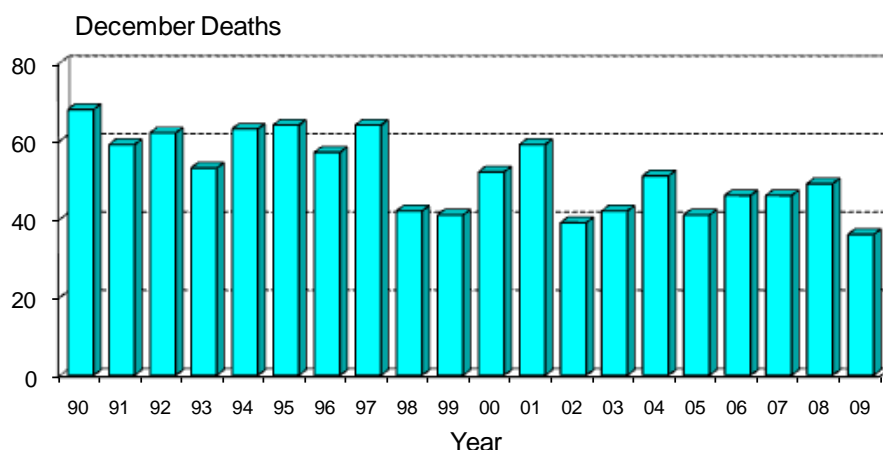


## Monthly Road Crash Stats Update

### December Road Deaths (2009)

The data presented here are provisional. Crash data as at – 13<sup>th</sup> January 2010

- Thirty-six people died on New Zealand roads in December. This is 13 fewer than the number of deaths for December 2008 and is 10 fewer than the average December toll for the last five years. This was the lowest December road toll since 1965. (Monthly records are not available prior to 1965).



- In the 12 months to the end of December 2009, 384 people were killed on our roads. This is 19 more than the number of deaths in the 12 months to the end of December 2008. It is, however, the second lowest annual road toll since 1960.
- During December, 16 of the deaths were car or van drivers, 12 were car or van passengers, five were motorcyclists two were pedestrians and one was a truck driver.
- Twenty-eight of the 36 killed were in open road crashes. Nineteen were in single vehicle crashes in which a driver lost control of the vehicle or ran off the road and 10 were in head-on crashes.
- Of the 29 vehicle occupants killed, 11 were not restrained at the time of the crash.

### Deaths and Police reported injuries by age, sex and type of road user

Deaths are for the 12 months to the end of December 2009. Reported injuries are for the 12 months to the end of June 2009.

Note: Preliminary fatal crash reports are submitted within 24 hours of a crash related death. Full injury crash reports are submitted only after the crash investigations are completed, so there is a lag in the reporting of injury crashes.

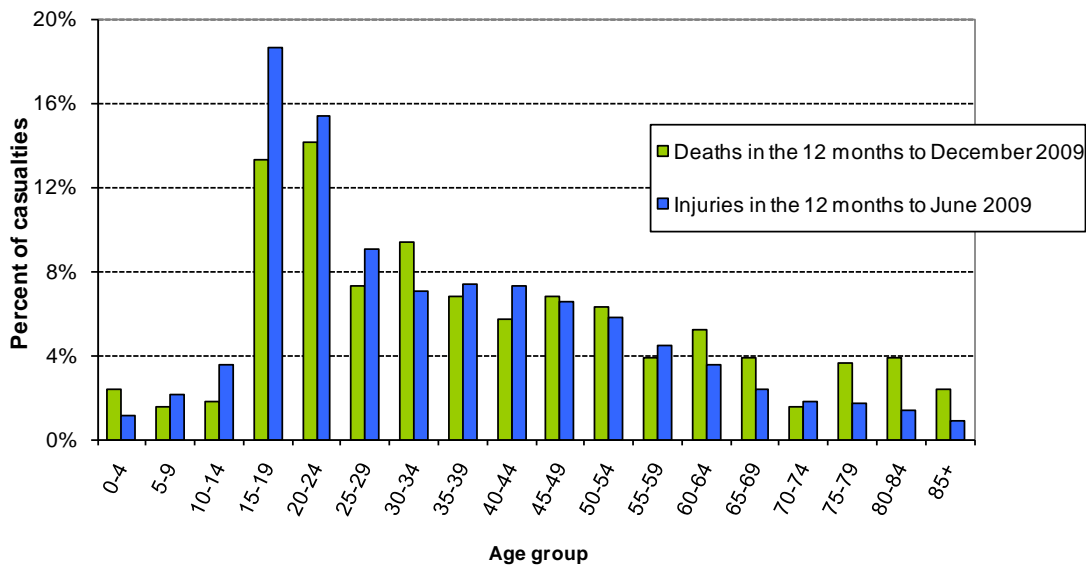
#### Road user type by sex

Sex	Drivers		Passengers		Motorcyclists		Pedestrians		Cyclists		Other		Total	
	Killed	Injured	Killed	Injured	Killed	Injured	Killed	Injured	Killed	Injured	Killed	Injured	Killed	Injured
Male	134	4650	55	1471	45	1154	22	476	7	602	2	35	265	8388
Female	58	3732	48	1833	3	248	9	433	1	207	0	17	119	6470
Total	192	8382	103	3304	48	1402	31	909	8	809	2	52	384	14858
% male	70%	55%	53%	45%	94%	82%	71%	52%	88%	74%	100%	67%	69%	56%

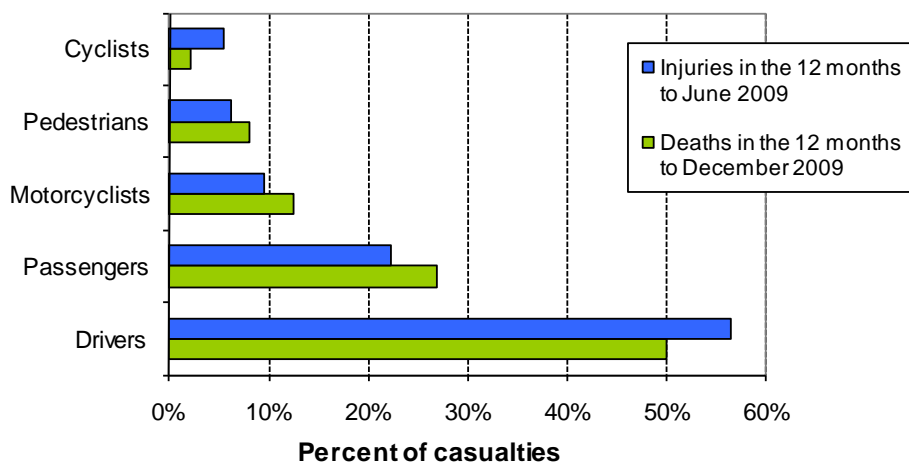
## Road user type by age group

Age group	Drivers		Passengers		Motorcyclists		Pedestrians		Cyclists		Other		Total	
	Killed	Injured	Killed	Injured	Killed	Injured	Killed	Injured	Killed	Injured	Killed	Injured	Killed	Injured
Under-15	0	12	17	579	0	32	3	207	1	131	1	9	22	970
15-24	46	2692	45	1359	7	430	6	200	1	166	0	10	105	4857
25-34	34	1508	10	340	16	247	2	88	2	115	0	4	64	2302
35-44	22	1364	7	218	13	284	5	82	1	145	0	4	48	2097
45-54	34	1146	3	168	9	264	3	74	1	114	0	1	50	1767
55-64	16	766	9	168	3	87	6	52	1	67	0	6	35	1146
65-74	16	400	4	99	0	28	0	55	1	19	0	4	21	605
75+	23	389	8	84	0	10	6	68	0	7	1	11	38	569
Unknown	1	105	0	289	0	20	0	83	0	45	0	3	1	545
<b>Total</b>	<b>192</b>	<b>8382</b>	<b>103</b>	<b>3304</b>	<b>48</b>	<b>1402</b>	<b>31</b>	<b>909</b>	<b>8</b>	<b>809</b>	<b>2</b>	<b>52</b>	<b>384</b>	<b>14858</b>

## Deaths and reported injuries by age group

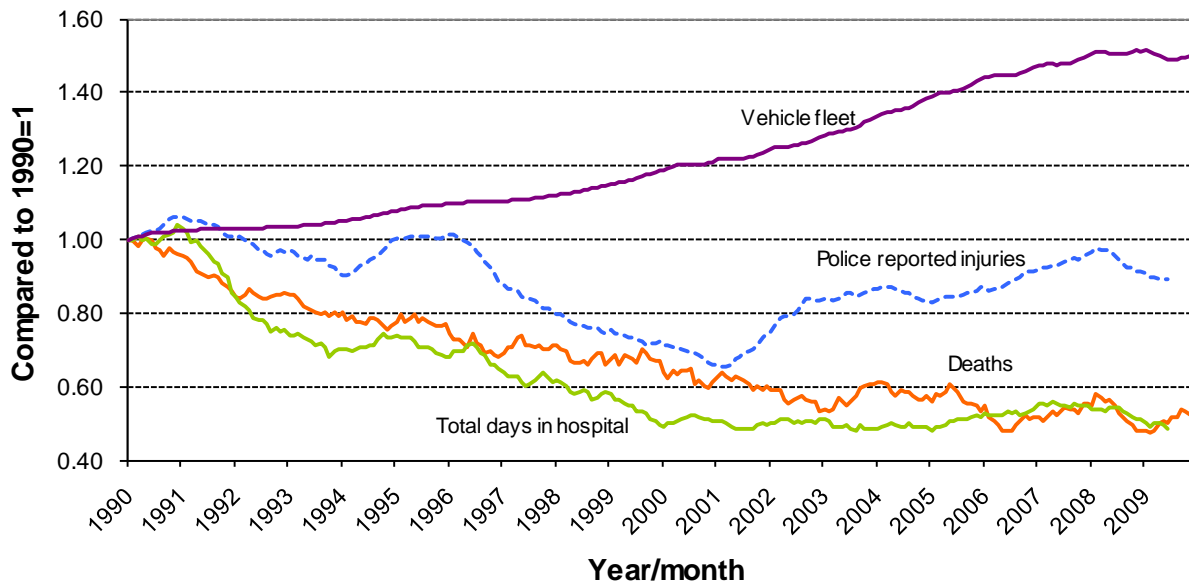


## Types of road users killed and injured



## Trends

### Road crash casualties and vehicle fleet compared to 1990



Since 1990 the number of vehicles on the road has increased by 50% while Police reported injuries have dropped by 11%, road deaths have dropped by 49% and the number of days spent in hospital as a result of road crashes has dropped by 51%.

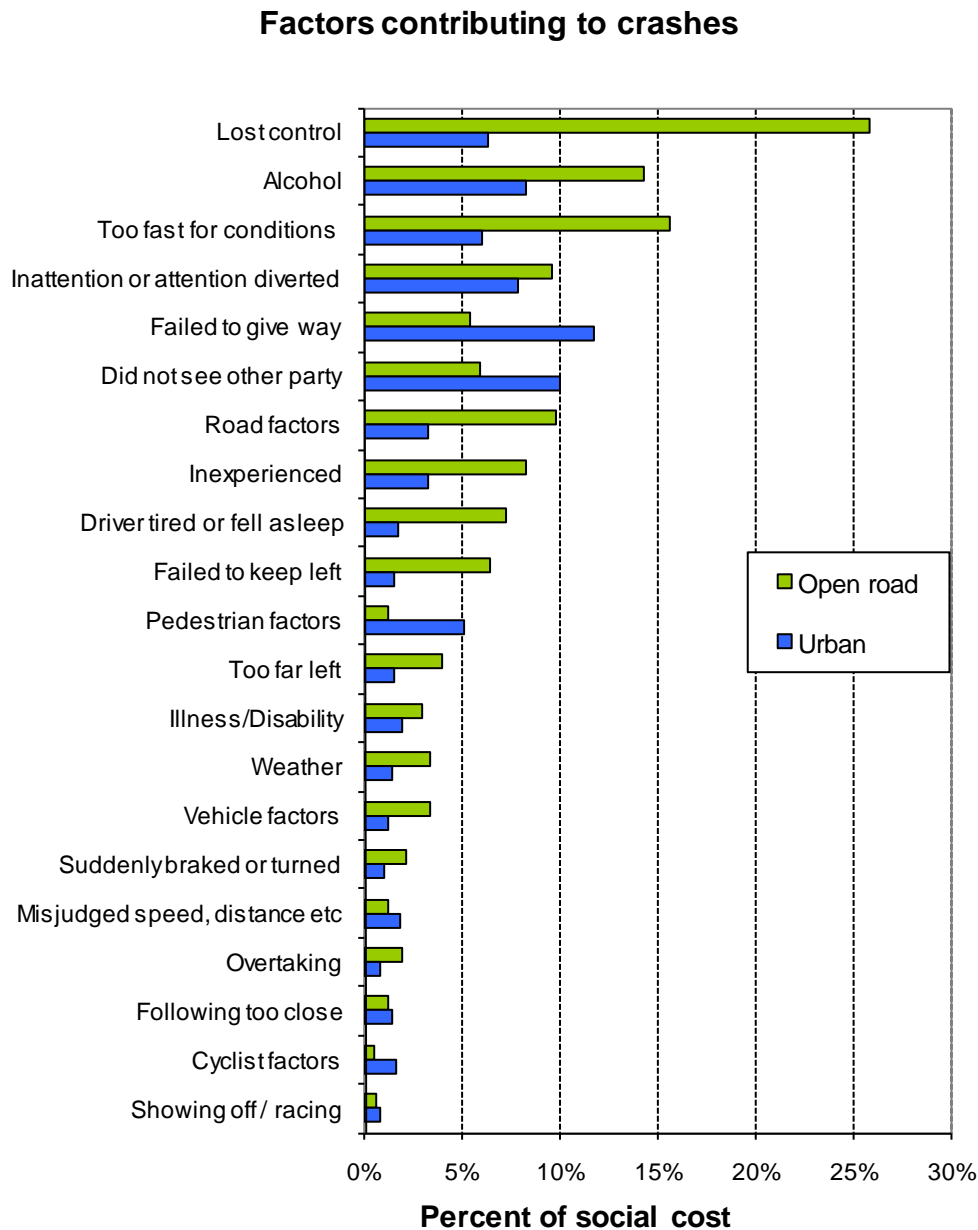
### Crash outcomes and road user behaviour

	2000	2001	2002	2003	2004	2005	2006	2007	2008	2009
<b>Road Crash Data</b>										
<b>Deaths</b>										
Number of road deaths	462	455	405	461	435	405	393	421	365	384
Deaths per 10,000 vehicles	1.8	1.7	1.5	1.6	1.5	1.3	1.3	1.3	1.1	1.2
Deaths per 100,000 people	12.1	11.8	10.3	11.5	10.7	9.9	9.5	10.0	8.6	8.9
<b>Injuries</b>										
Reported injuries	10962	12368	13918	14372	13890	14456	15174	16013	15174	14858
Number hospitalised (all discharges)	5990	6700	6530	6540	6580	7210	7680	7440	7550	7929
Number hospitalised for over 1 day #	2846	2880	2750	2720	2710	2860	3020	3060	2880	2789
Number hospitalised for over 3 days #	1815	1794	1740	1700	1700	1840	1900	1990	1880	1835
<b>Behavioural Measures</b>										
<b>Speed</b>										
Rural speed, % over 100 km/h	52%	47%	43%	39%	39%	36%	32%	29%	30%	29%
Rural speed, mean (km/h)	101.1	100.2	99.1	98	97.8	97.1	96.4	96.3	96.6	96.3
Rural speed, 85th percentile (km/h)	111	109	107	105	105	104	103	103	103	103
<b>Alcohol</b>										
Number of drivers killed with excess alcohol	58	55	60	70	69	58	54	65	59	
Percent of drivers killed with excess alcohol	21%	21%	24%	27%	27%	25%	24%	27%	28%	
<b>Occupant Restraints</b>										
Seat belts worn by adults, front	90%	92%	92%	92%	94%	95%	95%	95%	95%	95%
Seat belts worn by adults, rear	76%	70%	78%	81%	86%	86%	89%	87%	87%	87%
Children restrained, 0-14 years	87%	89%	94%	96%	97%	94%	96%	94%	97%	97%
Child restraints used, 0-4 years	79%	82%	86%	86%	87%	89%	91%	91%	90%	
<b>Cycle helmets</b>										
Cycle helmets worn, weekday	93%	94%	89%	89%	92%	91%	94%	92%	92%	92%

# Includes only the first stay in hospital

Note: Road deaths for 2009 are for the 12 months to the end of December 2009. Reported injuries for 2009 are for the 12 months to the end of June 2009.

## Factors contributing to crashes – ranked by social cost\*



Notes: Crash data for the 12 months to end of June 2009

Since there can be several contributing factors for a single crash the figures represented in this graph add to more than 100%.

\* Social cost calculations include loss of life or life quality, loss of output due to injuries, medical and rehabilitation costs, legal and court costs and property damage.