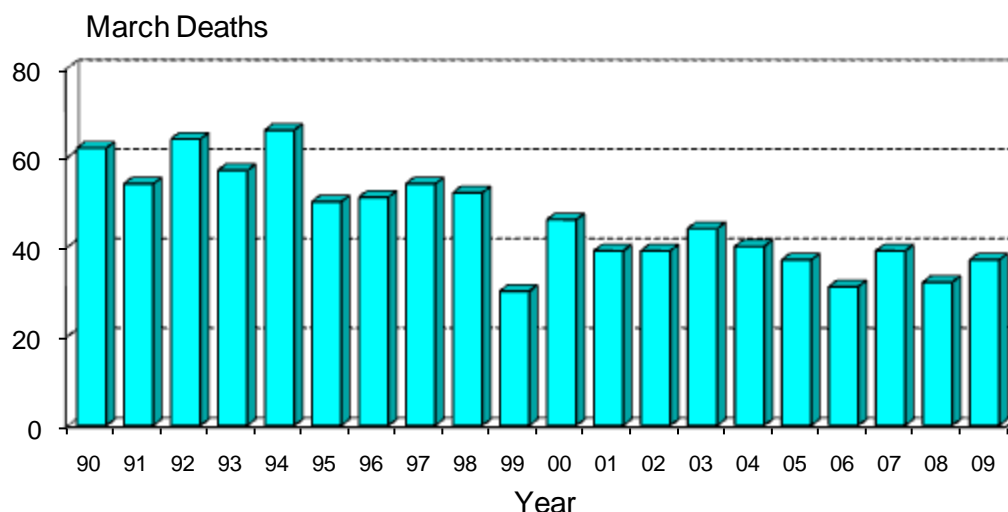


Monthly Road Crash Stats Update

March Road Deaths (2009)

The data presented here are provisional. Crash data as at – 14th April 2009

- Thirty-seven people died on New Zealand roads in March. This is five more than the number of deaths for March 2008 and is two more than the average March toll for the last five years.



- To the end of March this year 108 people have died on New Zealand roads. This is the same as at the same time last year.
- In the 12 months to the end of March 2009, 366 people were killed on our roads. This is 66 fewer than the number of deaths in the 12 months to the end of March 2008.
- During March, 14 of the deaths were car or van drivers, three were motorcyclists, nine were car or van passengers and three were pedestrians.
- Thirty-one of the 37 killed were in open road crashes. Sixteen were in head-on crashes, eleven were in single vehicle crashes in which a driver lost control of the vehicle or ran off the road and three were in collisions with pedestrians.
- Of the 28 vehicle occupants killed, four were not restrained at the time of the crash.

Deaths and Police reported injuries by age, sex and type of road user

Deaths are for the 12 months to the end of March 2009. Reported injuries are for the 12 months to the end of September 2008.

Note: Preliminary fatal crash reports are submitted within 24 hours of a crash related death. Full injury crash reports are submitted only after the crash investigations are completed, so there is a lag in the reporting of injury crashes.

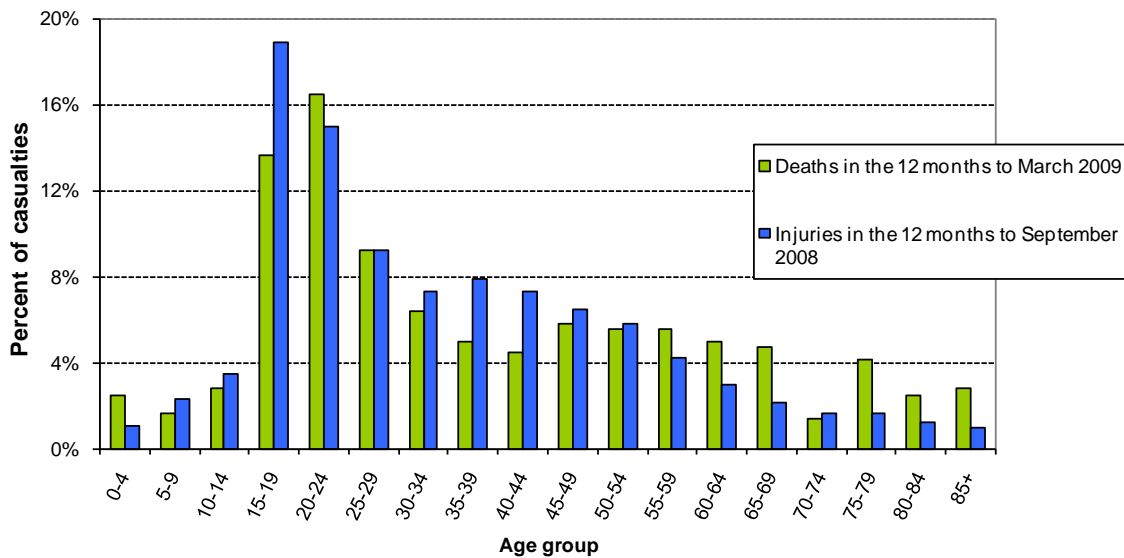
Road user type by sex

Sex	Drivers		Passengers		Motorcyclists		Pedestrians		Cyclists		Other		Total	
	Killed	Injured	Killed	Injured	Killed	Injured	Killed	Injured	Killed	Injured	Killed	Injured	Killed	Injured
Male	111	4868	58	1584	52	1142	24	514	7	664	3	31	255	8803
Female	57	3789	35	1888	4	253	9	433	4	247	2	15	111	6625
Total	168	8657	93	3472	56	1395	33	947	11	911	5	46	366	15428
%male	66%	56%	62%	46%	93%	82%	73%	54%	64%	73%	60%	67%	70%	57%

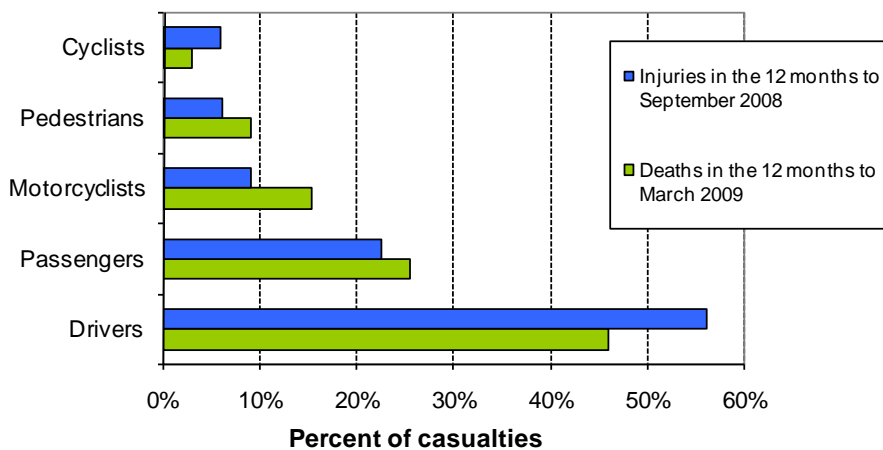
Road user type by age group

Age group	Drivers		Passengers		Motorcyclists		Pedestrians		Cyclists		Other		Total	
	Killed	Injured	Killed	Injured	Killed	Injured	Killed	Injured	Killed	Injured	Killed	Injured	Killed	Injured
Under-15	1	16	15	593	1	24	7	232	1	154	0	9	25	1028
15-24	48	2783	39	1453	12	423	7	205	2	169	0	9	108	5042
25-34	26	1607	12	367	12	256	4	96	2	136	0	2	56	2464
35-44	19	1480	2	252	9	265	3	91	1	176	0	1	34	2265
45-54	24	1186	1	178	14	263	1	78	1	133	0	0	41	1838
55-64	14	700	12	134	4	108	5	56	3	73	0	1	38	1072
65-74	13	381	3	94	3	19	2	50	1	22	0	7	22	573
75+	20	394	6	103	1	6	2	56	0	8	5	13	34	580
Unknown	3	110	3	298	0	31	2	83	0	40	0	4	8	566
Total	168	8657	93	3472	56	1395	33	947	11	911	5	46	366	15428

Deaths and reported injuries by age group

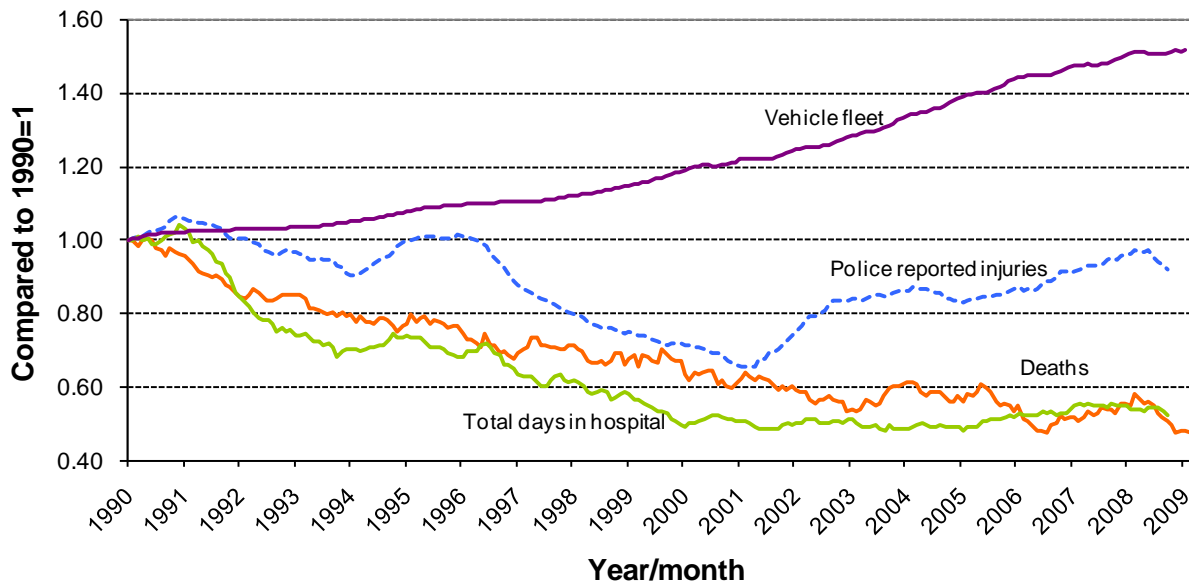


Types of road users killed and injured



Trends

Road crash casualties and vehicle fleet compared to 1990



Since 1990 the number of vehicles on the road has increased by 51% while Police reported injuries have dropped by 8%, road deaths have dropped by 52% and the number of days spent in hospital as a result of road crashes has dropped by 48%.

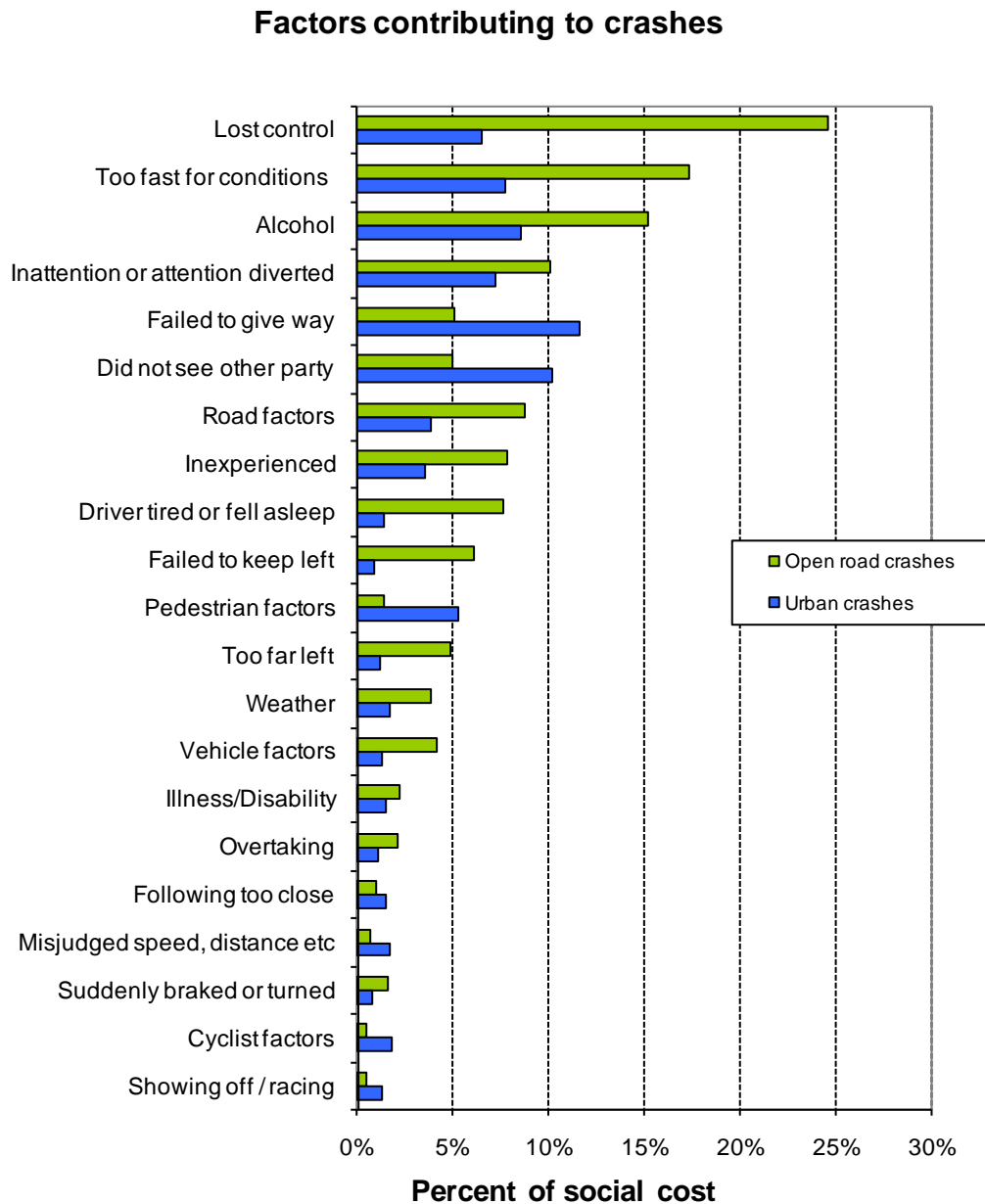
Crash outcomes and road user behaviour

	2000	2001	2002	2003	2004	2005	2006	2007	2008	2009
Road Crash Data										
Deaths										
Number of road deaths	462	455	405	461	435	405	393	421	365	365
Deaths per 10,000 vehicles	1.8	1.7	1.5	1.6	1.5	1.3	1.3	1.3	1.1	1.1
Deaths per 100,000 people	12.1	11.8	10.3	11.5	10.7	9.9	9.5	10.0	8.6	8.6
Injuries										
Reported injuries	10962	12368	13918	14372	13890	14456	15174	16013	15351	
Number hospitalised (all discharges)	5990	6700	6530	6540	6580	7210	7680	7440	7263	
Number hospitalised for over 1 day [#]	2846	2880	2750	2720	2710	2860	3020	3060	2921	
Number hospitalised for over 3 days [#]	1815	1794	1740	1700	1700	1840	1900	1990	1877	
Behavioural Measures										
Speed										
Rural speed, % over 100 km/h	52%	47%	43%	39%	39%	36%	32%	29%	30%	
Rural speed, mean (km/h)	101.1	100.2	99.1	98	97.8	97.1	96.4	96.3	96.6	
Rural speed, 85th percentile (km/h)	111	109	107	105	105	104	103	103	103	
Alcohol										
Number of drivers killed with excess alcohol	58	55	60	70	69	58	54	65		
Percent of drivers killed with excess alcohol	21%	21%	24%	27%	27%	25%	24%	27%		
Occupant Restraints										
Seat belts worn by adults, front	90%	92%	92%	92%	94%	95%	95%	95%	95%	
Seat belts worn by adults, rear	76%	70%	78%	81%	86%	86%	89%	87%	87%	
Children restrained, 0-14 years	87%	89%	94%	96%	97%	94%	96%	94%	97%	
Child restraints used, 0-4 years	79%	82%	86%	86%	87%	89%	91%	91%	90%	
Cycle helmets										
Cycle helmets worn, weekday	93%	94%	89%	89%	92%	91%	94%	92%	92%	

[#] Includes only the first stay in hospital

Note: Road deaths for 2009 are for the 12 months to the end of March 2009. Reported injuries for 2008 are for the 12 months to the end of September 2008.

Factors contributing to crashes – ranked by social cost*



Notes: Crash data for the 12 months to end of September 2008

Since there can be several contributing factors for a single crash the figures represented in this graph add to more than 100%.

* Social cost calculations include loss of life or life quality, loss of output due to injuries, medical and rehabilitation costs, legal and court costs and property damage.