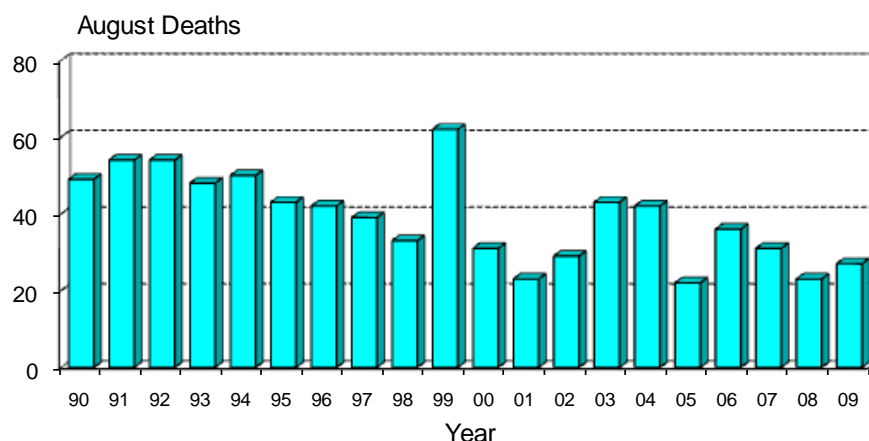


## Monthly Road Crash Stats Update

### August Road Deaths (2009)

The data presented here are provisional. Crash data as at – 10<sup>th</sup> September 2009

- Twenty-seven people died on New Zealand roads in August. This is four more than the number of deaths for August 2008 and is four fewer than the average August toll for the last five years.



- To the end of August this year 271 people have died on New Zealand roads. This is 31 more than at the same time last year.
- In the 12 months to the end of August 2009, 396 people were killed on our roads. This is five more than the number of deaths in the 12 months to the end of August 2008.
- During August, 17 of the deaths were car or van drivers, five were car or van passengers, two were motorcyclists, one was a truck driver, one was a pedestrian and one was a cyclist.
- Twenty-three of the 27 killed were in open road crashes. Eleven were in single vehicle crashes in which a driver lost control of the vehicle or ran off the road and nine were in head-on crashes.
- Of the 23 vehicle occupants killed, seven were not restrained at the time of the crash.

### Deaths and Police reported injuries by age, sex and type of road user

Deaths are for the 12 months to the end of August 2009. Reported injuries are for the 12 months to the end of February 2009.

Note: Preliminary fatal crash reports are submitted within 24 hours of a crash related death. Full injury crash reports are submitted only after the crash investigations are completed, so there is a lag in the reporting of injury crashes.

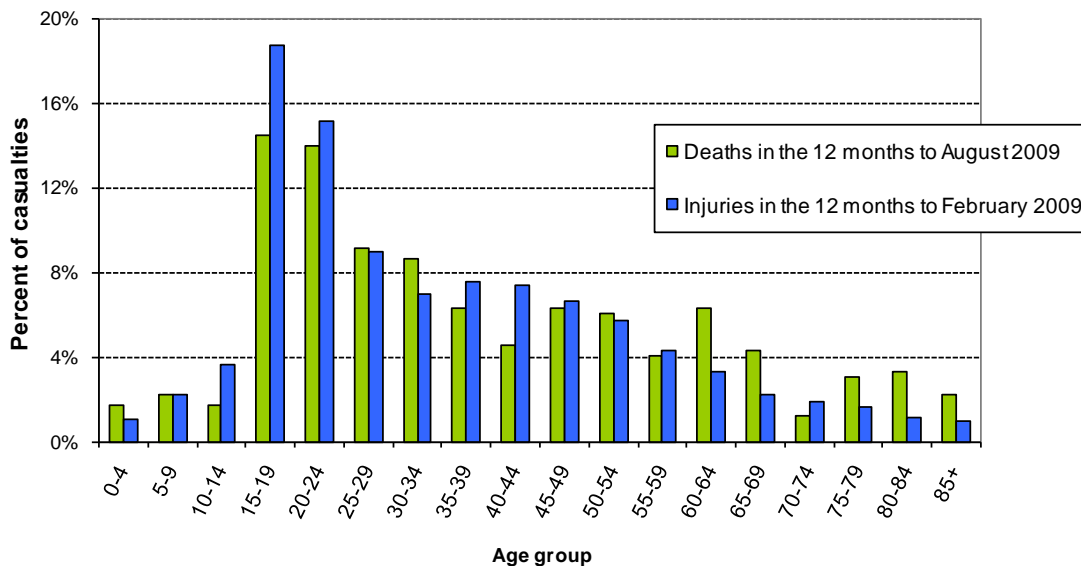
#### Road user type by sex

Sex	Drivers		Passengers		Motorcyclists		Pedestrians		Cyclists		Other		Total	
	Killed	Injured	Killed	Injured	Killed	Injured	Killed	Injured	Killed	Injured	Killed	Injured	Killed	Injured
Male	128	4733	60	1468	49	1125	26	487	6	642	3	29	272	8484
Female	66	3674	44	1801	4	249	6	426	3	239	1	12	124	6401
Total	194	8407	104	3269	53	1374	32	913	9	881	4	41	396	14885
% male	66%	56%	58%	45%	92%	82%	81%	53%	67%	73%	75%	71%	69%	57%

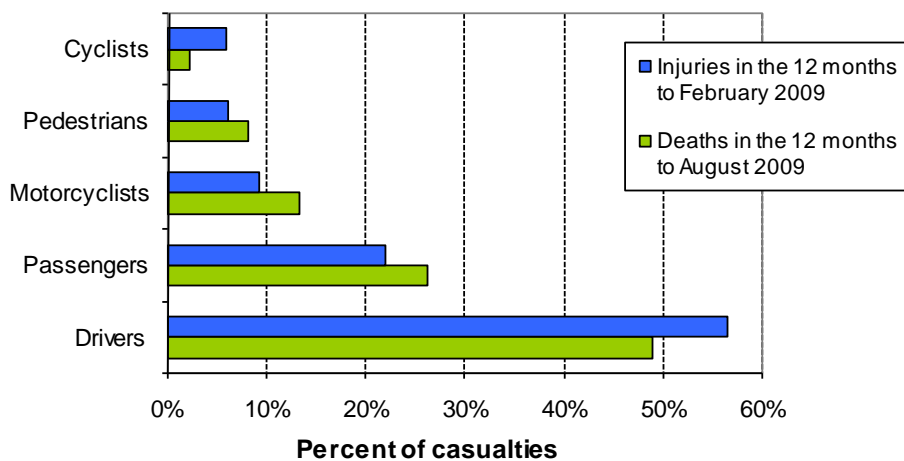
## Road user type by age group

Age group	Drivers		Passengers		Motorcyclists		Pedestrians		Cyclists		Other		Total	
	Killed	Injured	Killed	Injured	Killed	Injured	Killed	Injured	Killed	Injured	Killed	Injured	Killed	Injured
Under-15	1	15	15	570	0	36	5	219	1	146	1	8	23	994
15-24	44	2709	49	1362	7	416	10	185	2	180	0	6	112	4858
25-34	35	1496	14	352	16	239	2	94	3	118	0	3	70	2302
35-44	23	1398	7	219	10	282	2	85	1	168	0	2	43	2154
45-54	32	1159	1	159	13	263	3	74	0	115	0	1	49	1771
55-64	20	741	10	151	4	83	6	47	1	78	0	4	41	1104
65-74	16	408	2	87	2	23	1	58	1	21	0	4	22	601
75+	21	375	6	89	1	8	3	61	0	7	3	11	34	551
Unknown	2	106	0	280	0	24	0	90	0	48	0	2	2	550
<b>Total</b>	<b>194</b>	<b>8407</b>	<b>104</b>	<b>3269</b>	<b>53</b>	<b>1374</b>	<b>32</b>	<b>913</b>	<b>9</b>	<b>881</b>	<b>4</b>	<b>41</b>	<b>396</b>	<b>14885</b>

## Deaths and reported injuries by age group

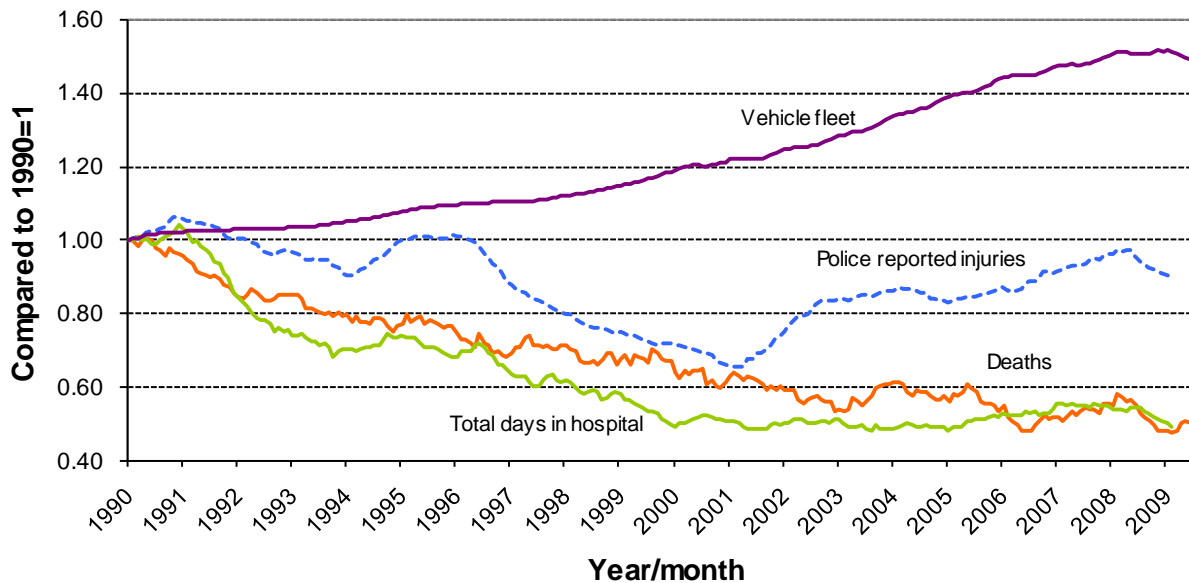


## Types of road users killed and injured



## Trends

### Road crash casualties and vehicle fleet compared to 1990



Since 1990 the number of vehicles on the road has increased by 49% while Police reported injuries have dropped by 11%, road deaths have dropped by 48% and the number of days spent in hospital as a result of road crashes has dropped by 51%.

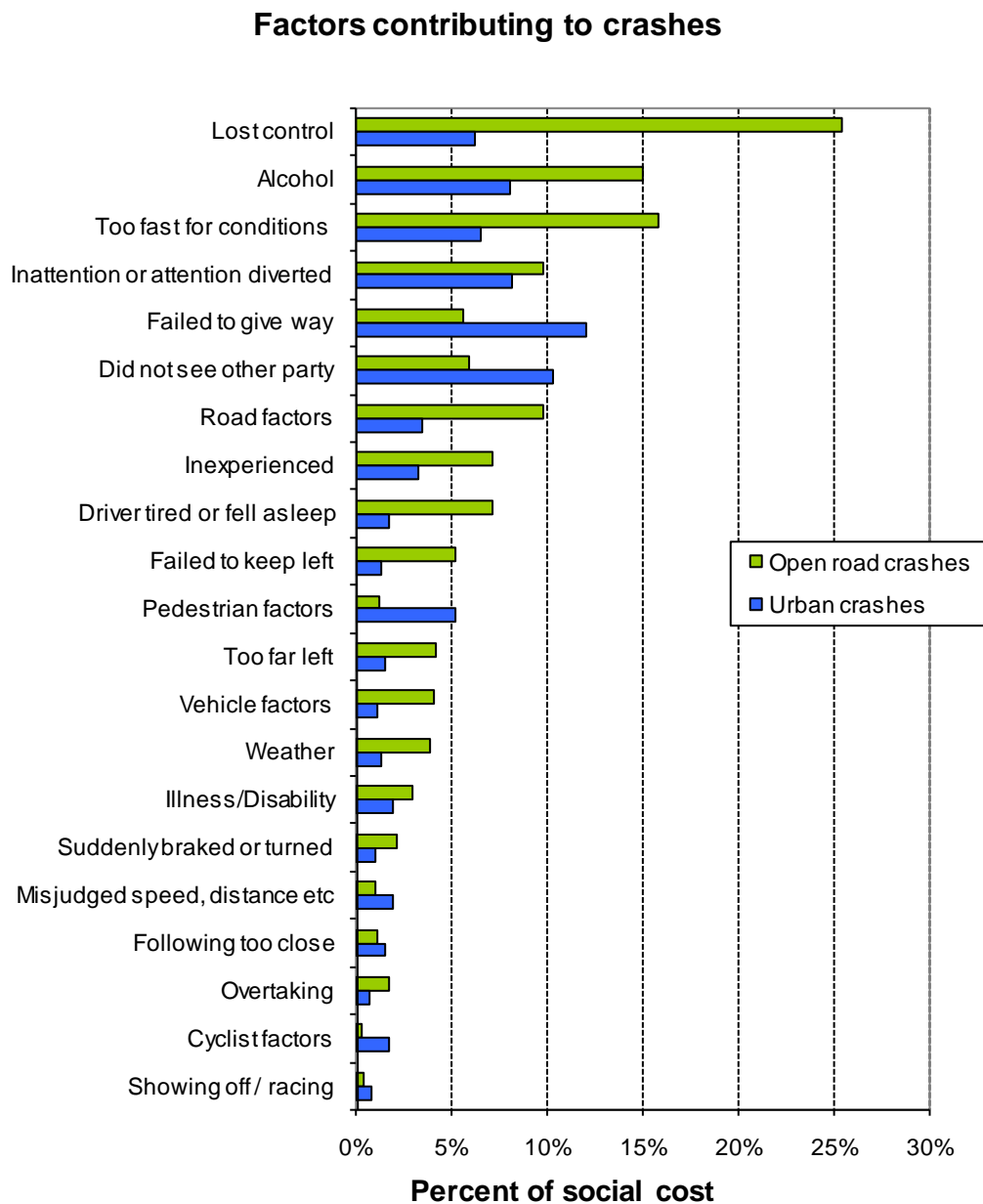
### Crash outcomes and road user behaviour

	2000	2001	2002	2003	2004	2005	2006	2007	2008	2009
<b>Road Crash Data</b>										
<b>Deaths</b>										
Number of road deaths	462	455	405	461	435	405	393	421	365	396
Deaths per 10,000 vehicles	1.8	1.7	1.5	1.6	1.5	1.3	1.3	1.3	1.1	1.2
Deaths per 100,000 people	12.1	11.8	10.3	11.5	10.7	9.9	9.5	10.0	8.6	9.3
<b>Injuries</b>										
Reported injuries	10962	12368	13918	14372	13890	14456	15174	16013	15174	14885
Number hospitalised (all discharges)	5990	6700	6530	6540	6580	7210	7680	7440	7490	7492
Number hospitalised for over 1 day <sup>#</sup>	2846	2880	2750	2720	2710	2860	3020	3060	2880	2793
Number hospitalised for over 3 days <sup>#</sup>	1815	1794	1740	1700	1700	1840	1900	1990	1880	1827
<b>Behavioural Measures</b>										
<b>Speed</b>										
Rural speed, % over 100 km/h	52%	47%	43%	39%	39%	36%	32%	29%	30%	
Rural speed, mean (km/h)	101.1	100.2	99.1	98	97.8	97.1	96.4	96.3	96.6	
Rural speed, 85th percentile (km/h)	111	109	107	105	105	104	103	103	103	
<b>Alcohol</b>										
Number of drivers killed with excess alcohol	58	55	60	70	69	58	54	65	59	
Percent of drivers killed with excess alcohol	21%	21%	24%	27%	27%	25%	24%	27%	28%	
<b>Occupant Restraints</b>										
Seat belts worn by adults, front	90%	92%	92%	92%	94%	95%	95%	95%	95%	95%
Seat belts worn by adults, rear	76%	70%	78%	81%	86%	86%	89%	87%	87%	
Children restrained, 0-14 years	87%	89%	94%	96%	97%	94%	96%	94%	97%	97%
Child restraints used, 0-4 years	79%	82%	86%	86%	87%	89%	91%	91%	90%	
<b>Cycle helmets</b>										
Cycle helmets worn, weekday	93%	94%	89%	89%	92%	91%	94%	92%	92%	92%

<sup>#</sup> Includes only the first stay in hospital

*Note: Road deaths for 2009 are for the 12 months to the end of August 2009. Reported injuries for 2009 are for the 12 months to the end of February 2009.*

## Factors contributing to crashes – ranked by social cost\*



Notes: Crash data for the 12 months to end of February 2009

Since there can be several contributing factors for a single crash the figures represented in this graph add to more than 100%.

\* Social cost calculations include loss of life or life quality, loss of output due to injuries, medical and rehabilitation costs, legal and court costs and property damage.