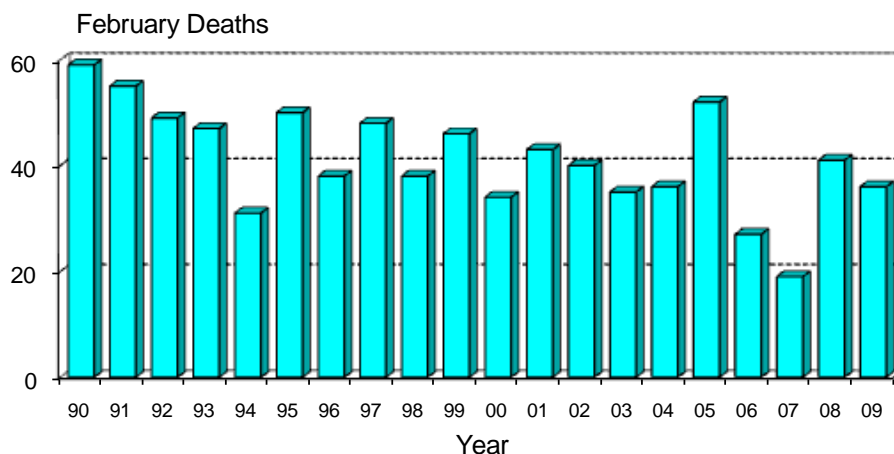


## Monthly Road Crash Stats Update

### February Road Deaths (2009)

The data presented here are provisional. Crash data as at – 11<sup>th</sup> March 2009

- Thirty-six people died on New Zealand roads in February. This is five fewer than the number of deaths for February 2008 and is one more than the average February toll for the last five years.



- To the end of February this year 70 people have died on New Zealand roads. This is 6 fewer than at the same time last year.
- In the 12 months to the end of February 2009, 359 people were killed on our roads. This is 80 fewer than the number of deaths in the 12 months to the end of February 2008.
- During February, 18 of the deaths were car or van drivers, eight were motorcyclists, five were car or van passengers and five were pedestrians.
- Twenty-nine of the 36 killed were in open road crashes. Fourteen were in head-on crashes, eleven were in single vehicle crashes in which a driver lost control of the vehicle or ran off the road and five were in collisions with pedestrians.
- Of the 23 vehicle occupants killed, four were not restrained at the time of the crash.

### Deaths and Police reported injuries by age, sex and type of road user

**Deaths are for the 12 months to the end of February 2009. Reported injuries are for the 12 months to the end of August 2008.**

*Note: Preliminary fatal crash reports are submitted within 24 hours of a crash related death. Full injury crash reports are submitted only after the crash investigations are completed, so there is a lag in the reporting of injury crashes.*

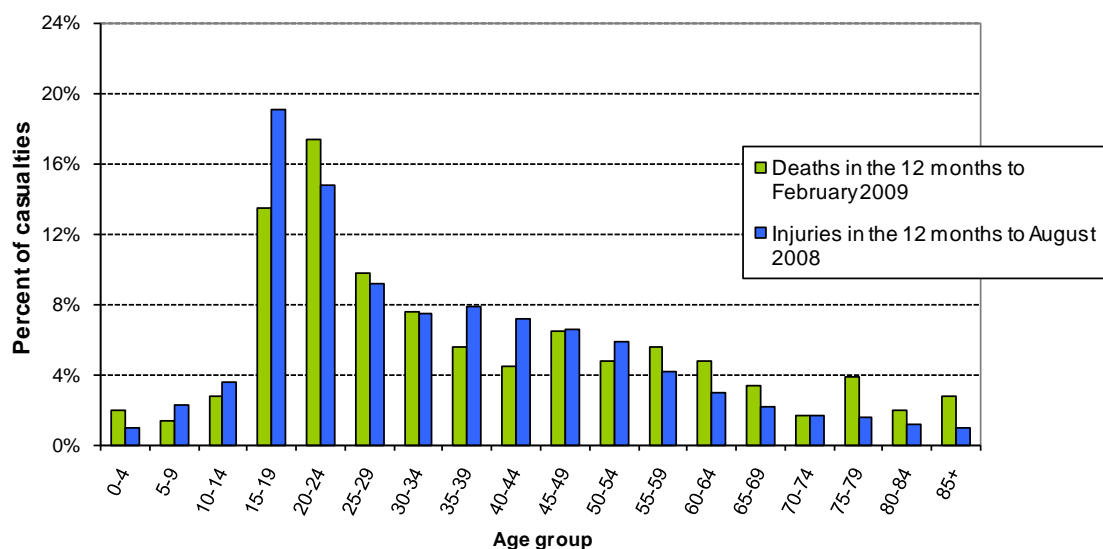
#### Road user type by sex

Sex	Drivers		Passengers		Motorcyclists		Pedestrians		Cyclists		Other		Total	
	Killed	Injured	Killed	Injured	Killed	Injured	Killed	Injured	Killed	Injured	Killed	Injured	Killed	Injured
Male	116	4902	56	1580	53	1130	21	516	5	663	2	31	253	8822
Female	51	3810	38	1898	3	254	9	424	3	257	2	14	106	6657
Total	167	8712	94	3478	56	1384	30	940	8	920	4	45	359	15479
% male	69%	56%	60%	45%	95%	82%	70%	55%	63%	72%	50%	69%	70%	57%

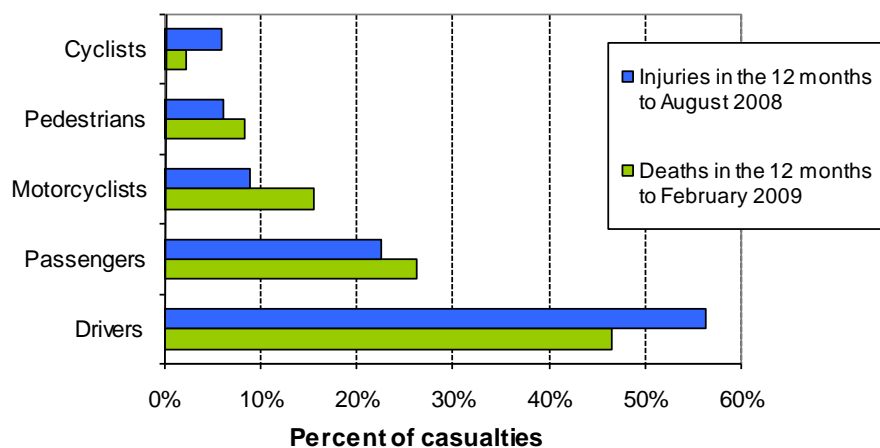
## Road user type by age group

Age group	Drivers		Passengers		Motorcyclists		Pedestrians		Cyclists		Other		Total	
	Killed	Injured	Killed	Injured	Killed	Injured	Killed	Injured	Killed	Injured	Killed	Injured	Killed	Injured
Under-15	1	17	14	589	1	24	6	232	0	152	0	8	22	1022
15-24	51	2809	40	1446	11	413	6	209	2	167	0	9	110	5053
25-34	30	1633	14	373	13	247	4	97	1	140	0	2	62	2492
35-44	21	1488	3	251	9	262	3	89	0	172	0	1	36	2263
45-54	23	1183	2	183	14	272	0	75	1	140	0	0	40	1853
55-64	13	700	12	134	4	111	5	49	3	71	0	1	37	1066
65-74	9	384	3	93	3	19	2	50	1	26	0	6	18	578
75+	17	388	6	104	1	7	3	51	0	9	4	14	31	573
Unknown	2	110	0	305	0	29	1	88	0	43	0	4	3	579
<b>Total</b>	<b>167</b>	<b>8712</b>	<b>94</b>	<b>3478</b>	<b>56</b>	<b>1384</b>	<b>30</b>	<b>940</b>	<b>8</b>	<b>920</b>	<b>4</b>	<b>45</b>	<b>359</b>	<b>15479</b>

## Deaths and reported injuries by age group

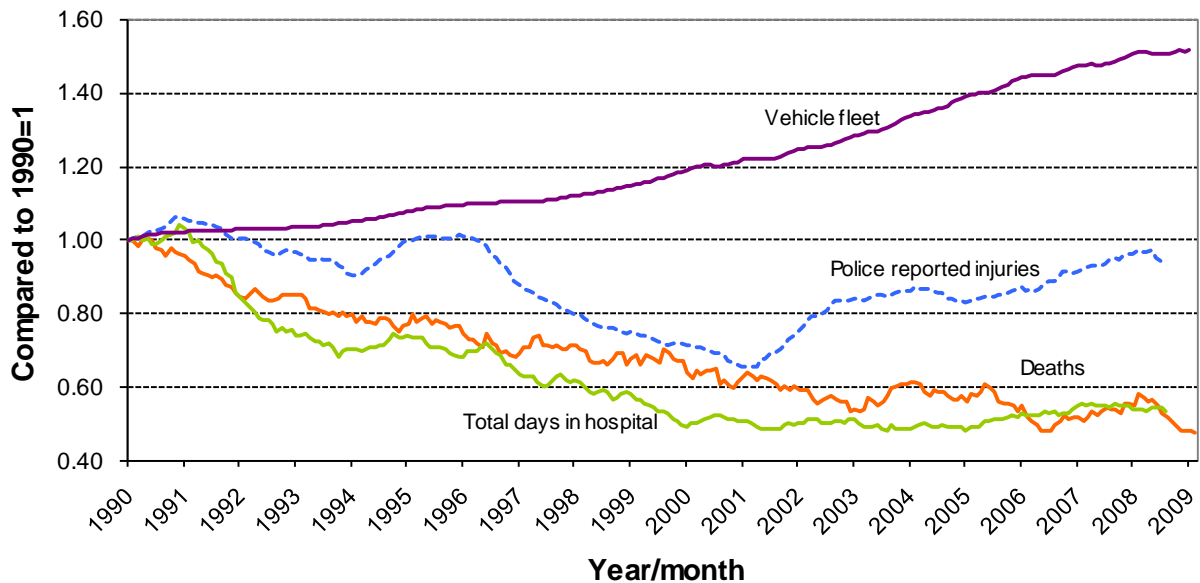


## Types of road users killed and injured



## Trends

### Road crash casualties and vehicle fleet compared to 1990



Since 1990 the number of vehicles on the road has increased by 51% while Police reported injuries have dropped by 7%, road deaths have dropped by 53% and the number of days spent in hospital as a result of road crashes has dropped by 47%.

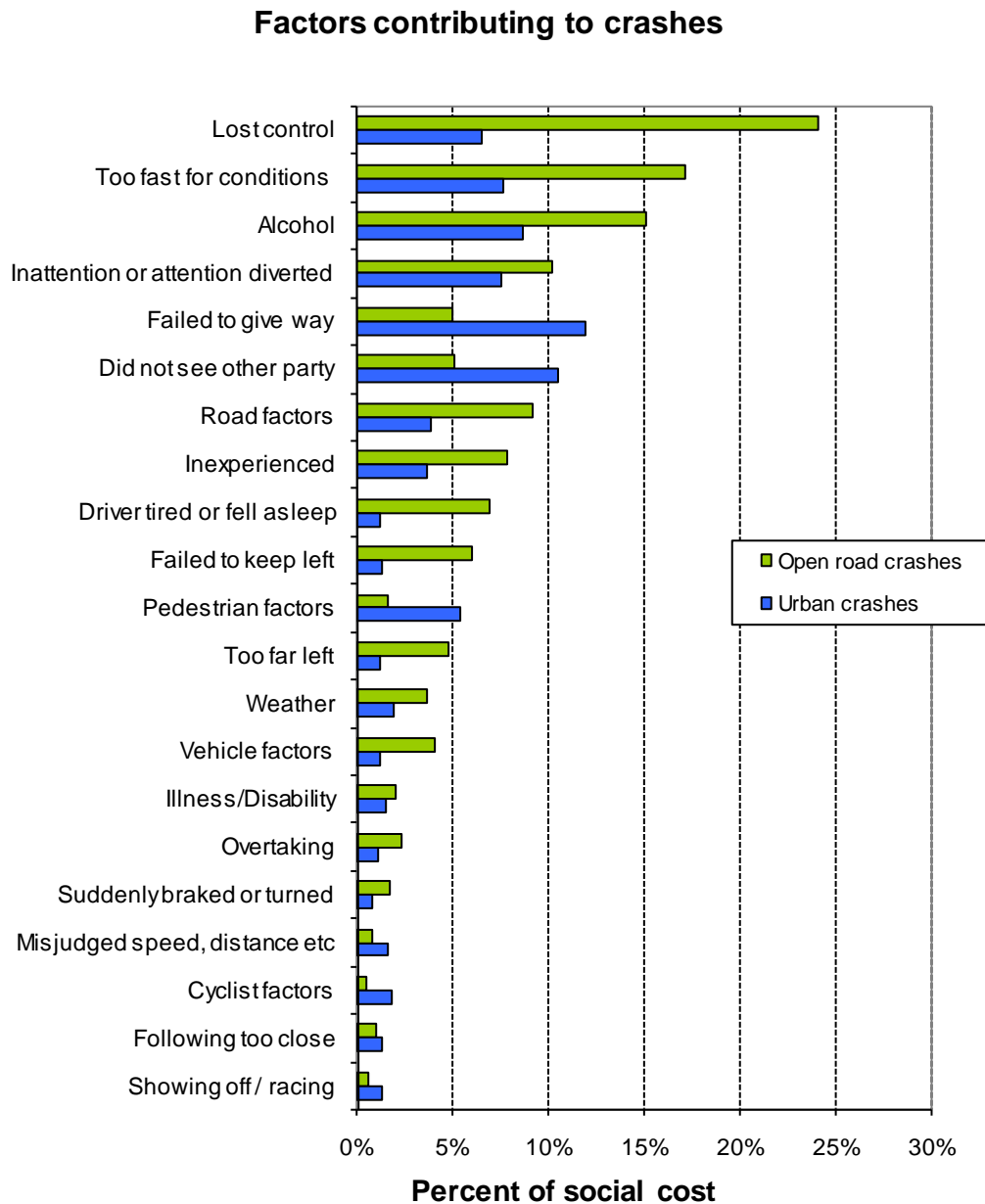
### Crash outcomes and road user behaviour

	2000	2001	2002	2003	2004	2005	2006	2007	2008	2009
<b>Road Crash Data</b>										
<b>Deaths</b>										
Number of road deaths	462	455	405	461	435	405	393	421	365	359
Deaths per 10,000 vehicles	1.8	1.7	1.5	1.6	1.5	1.3	1.3	1.3	1.1	1.1
Deaths per 100,000 people	12.1	11.8	10.3	11.5	10.7	9.9	9.5	10.0	8.6	8.4
<b>Injuries</b>										
Reported injuries	10962	12368	13918	14372	13890	14456	15174	16013	15479	
Number hospitalised (all discharges)	5990	6700	6530	6540	6580	7210	7680	7440	7256	
Number hospitalised for over 1 day <sup>#</sup>	2846	2880	2750	2720	2710	2860	3020	3060	2967	
Number hospitalised for over 3 days <sup>#</sup>	1815	1794	1740	1700	1700	1840	1900	1990	1902	
<b>Behavioural Measures</b>										
<b>Speed</b>										
Rural speed, % over 100 km/h	52%	47%	43%	39%	39%	36%	32%	29%	30%	
Rural speed, mean (km/h)	101.1	100.2	99.1	98	97.8	97.1	96.4	96.3	96.6	
Rural speed, 85th percentile (km/h)	111	109	107	105	105	104	103	103	103	
<b>Alcohol</b>										
Number of drivers killed with excess alcohol	58	55	60	70	69	58	54	65		
Percent of drivers killed with excess alcohol	21%	21%	24%	27%	27%	25%	24%	27%		
<b>Occupant Restraints</b>										
Seat belts worn by adults, front	90%	92%	92%	92%	94%	95%	95%	95%	95%	
Seat belts worn by adults, rear	76%	70%	78%	81%	86%	86%	89%	87%		
Children restrained, 0-14 years	87%	89%	94%	96%	97%	94%	96%	94%	97%	
Child restraints used, 0-4 years	79%	82%	86%	86%	87%	89%	91%	91%	90%	
<b>Cycle helmets</b>										
Cycle helmets worn, weekday	93%	94%	89%	89%	92%	91%	94%	92%	92%	

<sup>#</sup> Includes only the first stay in hospital

*Note: Road deaths for 2009 are for the 12 months to the end of February 2009. Reported injuries for 2008 are for the 12 months to the end of August 2008.*

## Factors contributing to crashes – ranked by social cost\*



Notes: Crash data for the 12 months to end of August 2008

Since there can be several contributing factors for a single crash the figures represented in this graph add to more than 100%.

\* Social cost calculations include loss of life or life quality, loss of output due to injuries, medical and rehabilitation costs, legal and court costs and property damage.