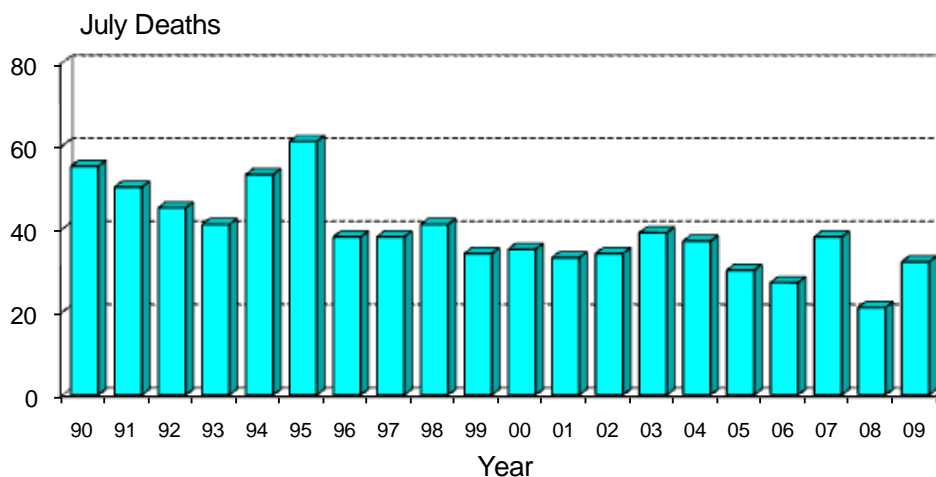


Monthly Road Crash Stats Update

July Road Deaths (2009)

The data presented here are provisional. Crash data as at – 10th August 2009

- Thirty-two people died on New Zealand roads in July. This is 11 more than the number of deaths for July 2008 and is two more than the average July toll for the last five years.



- To the end of July this year 246 people have died on New Zealand roads. This is 28 more than at the same time last year.
- In the 12 months to the end of July 2009, 394 people were killed on our roads. This is six fewer than the number of deaths in the 12 months to the end of July 2008.
- During July, 15 of the deaths were car or van drivers, six were car or van passengers, five were pedestrians, two were truck drivers, one was a motorcyclist, one was a cyclist, one was a bus passenger and one was on a mobility scooter.
- Eighteen of the 32 killed were in open road crashes. Fifteen were in single vehicle crashes in which a driver lost control of the vehicle or ran off the road, seven were in head-on crashes and six were in pedestrian crashes.
- Of the 24 vehicle occupants killed, seven were not restrained at the time of the crash.

Deaths and Police reported injuries by age, sex and type of road user

Deaths are for the 12 months to the end of July 2009. Reported injuries are for the 12 months to the end of January 2009.

Note: Preliminary fatal crash reports are submitted within 24 hours of a crash related death. Full injury crash reports are submitted only after the crash investigations are completed, so there is a lag in the reporting of injury crashes.

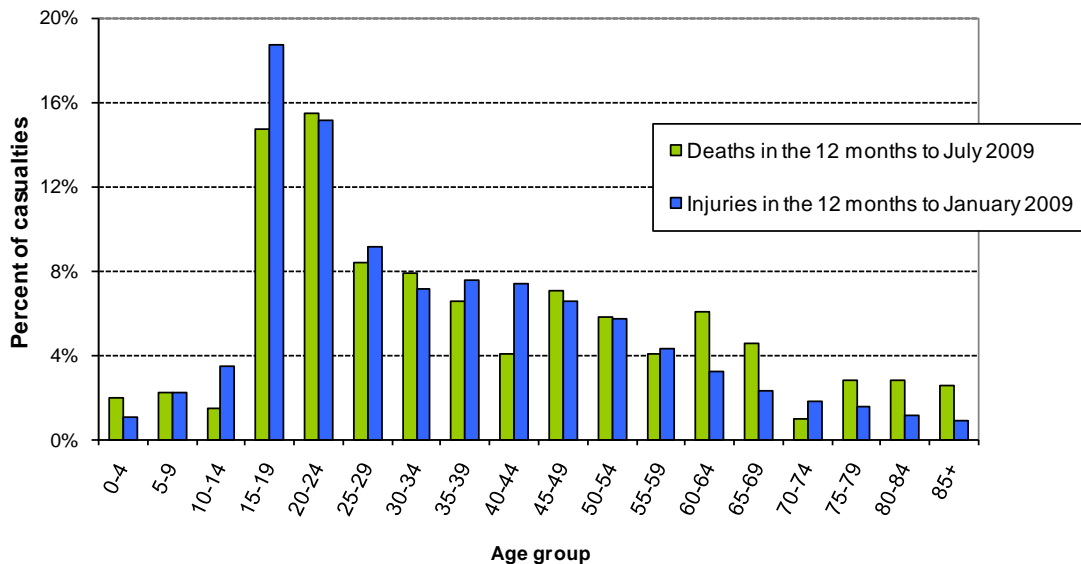
Road user type by sex

Sex	Drivers		Passengers		Motorcyclists		Pedestrians		Cyclists		Other		Total	
	Killed	Injured	Killed	Injured	Killed	Injured	Killed	Injured	Killed	Injured	Killed	Injured	Killed	Injured
Male	122	4770	62	1499	51	1158	25	493	7	651	3	32	270	8603
Female	66	3721	42	1794	5	257	6	441	4	243	1	13	124	6469
Total	188	8491	104	3293	56	1415	31	934	11	894	4	45	394	15072
% male	65%	56%	60%	46%	91%	82%	81%	53%	64%	73%	75%	71%	69%	57%

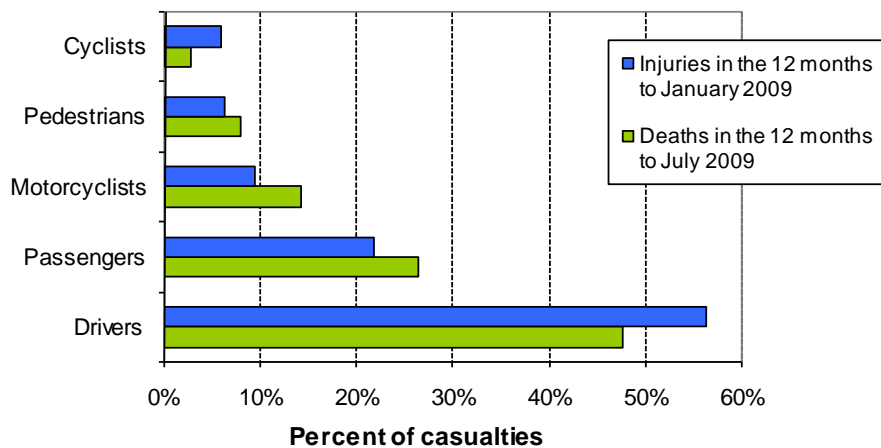
Road user type by age group

Age group	Drivers		Passengers		Motorcyclists		Pedestrians		Cyclists		Other		Total	
	Killed	Injured	Killed	Injured	Killed	Injured	Killed	Injured	Killed	Injured	Killed	Injured	Killed	Injured
Under-15	1	16	14	572	1	35	5	216	1	147	1	10	23	996
15-24	46	2752	51	1362	9	434	10	191	3	177	0	7	119	4923
25-34	31	1528	14	364	15	242	2	103	2	131	0	3	64	2371
35-44	22	1402	7	224	10	291	2	92	1	166	0	2	42	2177
45-54	32	1165	1	161	14	264	3	80	1	126	0	0	51	1796
55-64	19	731	10	147	4	94	6	47	1	77	0	3	40	1099
65-74	15	412	2	92	2	25	1	57	2	21	0	4	22	611
75+	21	379	5	85	1	5	2	59	0	6	3	13	32	547
Unknown	1	106	0	286	0	25	0	89	0	43	0	3	1	552
Total	188	8491	104	3293	56	1415	31	934	11	894	4	45	394	15072

Deaths and reported injuries by age group

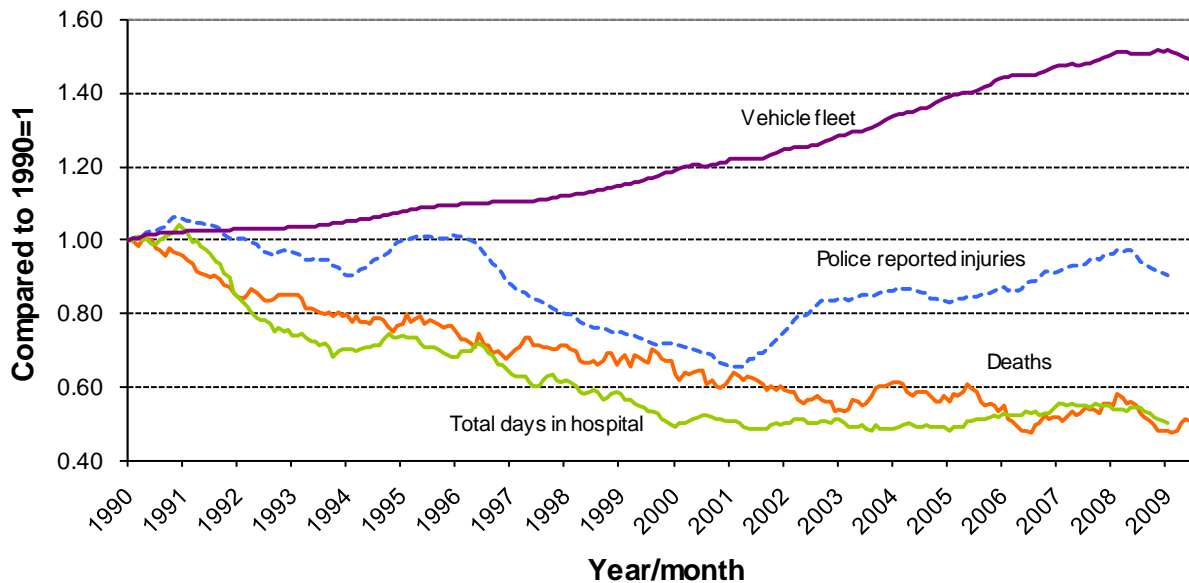


Types of road users killed and injured



Trends

Road crash casualties and vehicle fleet compared to 1990



Since 1990 the number of vehicles on the road has increased by 49% while Police reported injuries have dropped by 10%, road deaths have dropped by 48% and the number of days spent in hospital as a result of road crashes has dropped by 50%.

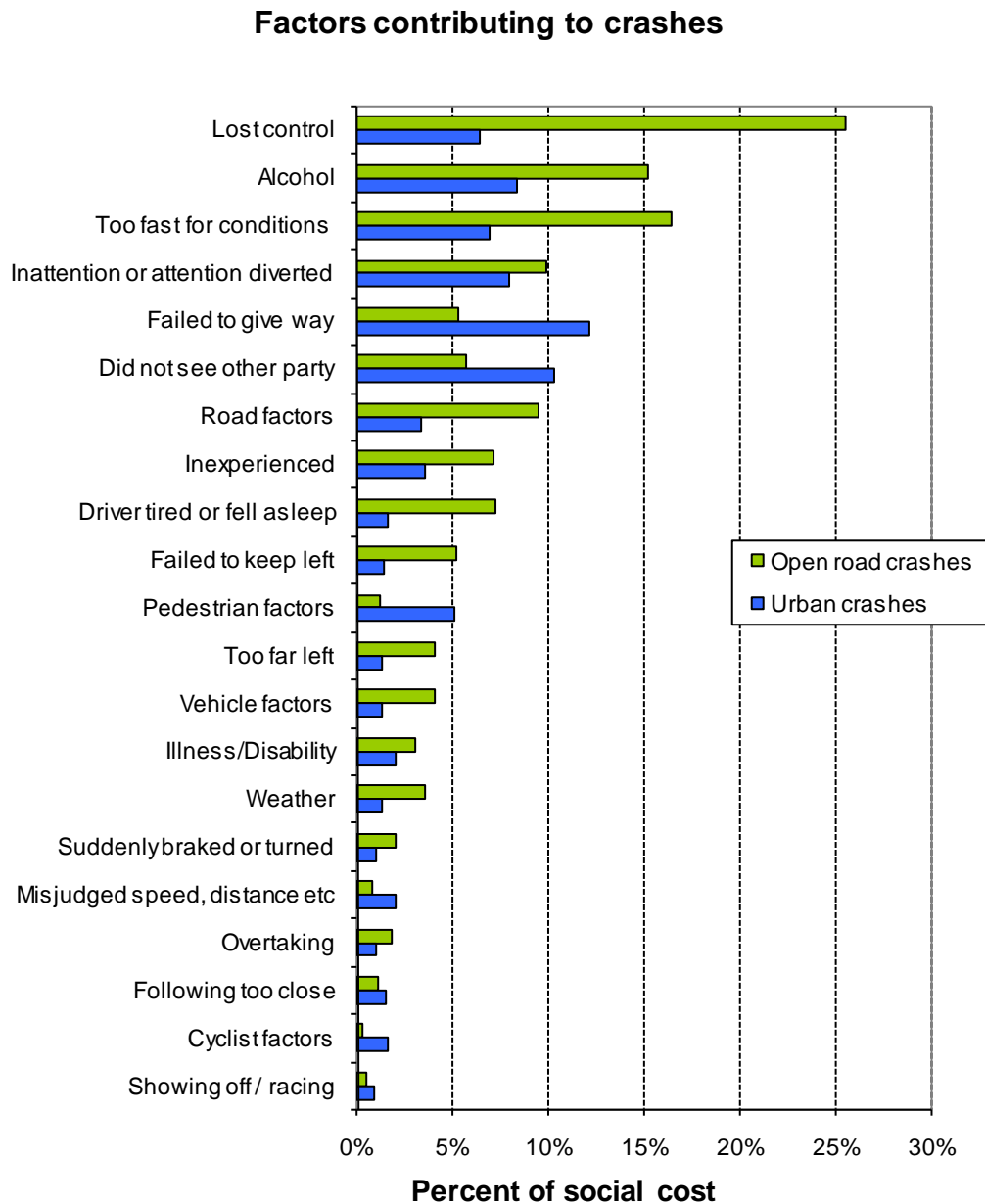
Crash outcomes and road user behaviour

	2000	2001	2002	2003	2004	2005	2006	2007	2008	2009
Road Crash Data										
Deaths										
Number of road deaths	462	455	405	461	435	405	393	421	366	394
Deaths per 10,000 vehicles	1.8	1.7	1.5	1.6	1.5	1.3	1.3	1.3	1.1	1.2
Deaths per 100,000 people	12.1	11.8	10.3	11.5	10.7	9.9	9.5	10.0	8.6	9.2
Injuries										
Reported injuries	10962	12368	13918	14372	13890	14456	15174	16013	15174	15072
Number hospitalised (all discharges)	5990	6700	6530	6540	6580	7210	7680	7440	7490	7509
Number hospitalised for over 1 day [#]	2846	2880	2750	2720	2710	2860	3020	3060	2880	2853
Number hospitalised for over 3 days [#]	1815	1794	1740	1700	1700	1840	1900	1990	1880	1862
Behavioural Measures										
Speed										
Rural speed, % over 100 km/h	52%	47%	43%	39%	39%	36%	32%	29%	30%	
Rural speed, mean (km/h)	101.1	100.2	99.1	98	97.8	97.1	96.4	96.3	96.6	
Rural speed, 85th percentile (km/h)	111	109	107	105	105	104	103	103	103	
Alcohol										
Number of drivers killed with excess alcohol	58	55	60	70	69	58	54	65	59	
Percent of drivers killed with excess alcohol	21%	21%	24%	27%	27%	25%	24%	27%	28%	
Occupant Restraints										
Seat belts worn by adults, front	90%	92%	92%	92%	94%	95%	95%	95%	95%	95%
Seat belts worn by adults, rear	76%	70%	78%	81%	86%	86%	89%	87%	87%	
Children restrained, 0-14 years	87%	89%	94%	96%	97%	94%	96%	94%	97%	97%
Child restraints used, 0-4 years	79%	82%	86%	86%	87%	89%	91%	91%	90%	
Cycle helmets										
Cycle helmets worn, weekday	93%	94%	89%	89%	92%	91%	94%	92%	92%	92%

[#] Includes only the first stay in hospital

Note: Road deaths for 2009 are for the 12 months to the end of July 2009. Reported injuries for 2009 are for the 12 months to the end of January 2009.

Factors contributing to crashes – ranked by social cost*



Notes: Crash data for the 12 months to end of January 2009

Since there can be several contributing factors for a single crash the figures represented in this graph add to more than 100%.

* Social cost calculations include loss of life or life quality, loss of output due to injuries, medical and rehabilitation costs, legal and court costs and property damage.