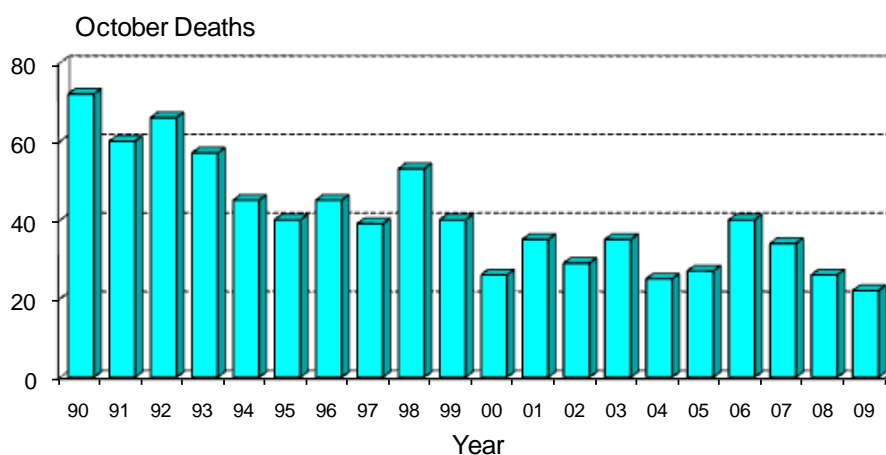


Monthly Road Crash Stats Update

October Road Deaths (2009)

The data presented here are provisional. Crash data as at – 9th November 2009

- Twenty-two people died on New Zealand roads in October. This is four fewer than the number of deaths for October 2008 and is eight fewer than the average October toll for the last five years. This was the lowest October road toll since 1965. (Monthly records unavailable prior to 1965).



- To the end of October this year 328 people have died on New Zealand roads. This is 38 more than at the same time last year.
- In the 12 months to the end of October 2009, 403 people were killed on our roads. This is 26 more than the number of deaths in the 12 months to the end of October 2008.
- During October, nine of the deaths were car or van drivers, six were car or van passengers, three were motorcyclists, three were pedestrians, and one was a cyclist.
- Fourteen of the 22 killed were in open road crashes. Seven were in head-on crashes and six were in single vehicle crashes in which a driver lost control of the vehicle or ran off the road.
- Of the 15 vehicle occupants killed, four were not restrained at the time of the crash.

Deaths and Police reported injuries by age, sex and type of road user

Deaths are for the 12 months to the end of October 2009. Reported injuries are for the 12 months to the end of April 2009.

Note: Preliminary fatal crash reports are submitted within 24 hours of a crash related death. Full injury crash reports are submitted only after the crash investigations are completed, so there is a lag in the reporting of injury crashes.

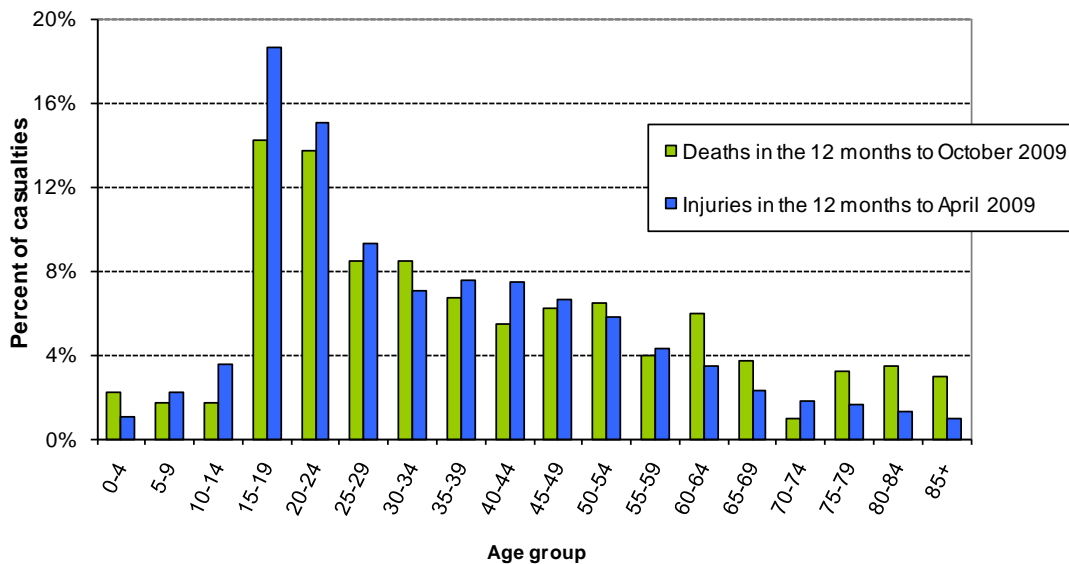
Road user type by sex

Sex	Drivers		Passengers		Motorcyclists		Pedestrians		Cyclists		Other		Total	
	Killed	Injured	Killed	Injured	Killed	Injured	Killed	Injured	Killed	Injured	Killed	Injured	Killed	Injured
Male	132	4677	57	1458	52	1155	25	479	8	619	3	32	277	8420
Female	66	3707	47	1791	4	244	8	437	1	237	0	14	126	6430
Total	198	8384	104	3249	56	1399	33	916	9	856	3	46	403	14850
%male	67%	56%	55%	45%	93%	83%	76%	52%	89%	72%	100%	70%	69%	57%

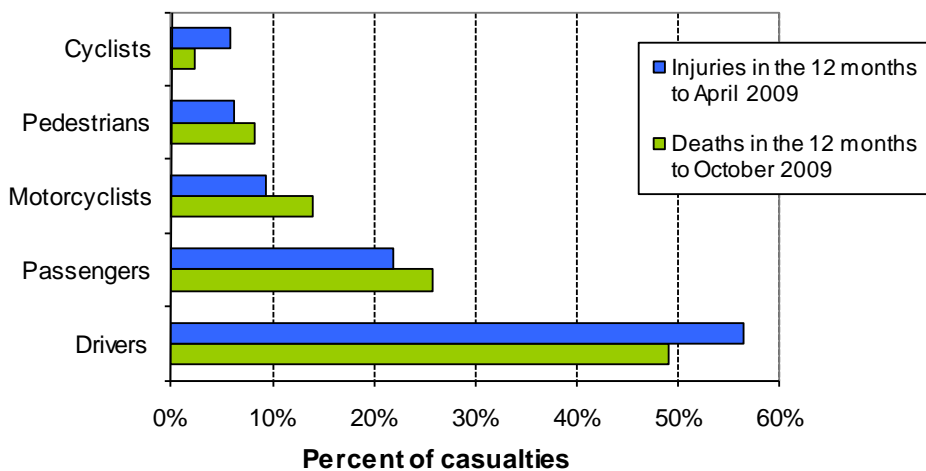
Road user type by age group

Age group	Drivers		Passengers		Motorcyclists		Pedestrians		Cyclists		Other		Total	
	Killed	Injured	Killed	Injured	Killed	Injured	Killed	Injured	Killed	Injured	Killed	Injured	Killed	Injured
Under-15	1	12	17	564	0	34	3	214	1	134	1	7	23	965
15-24	49	2666	44	1334	9	435	9	198	1	168	0	9	112	4810
25-34	33	1524	14	356	16	237	3	98	2	120	0	3	68	2338
35-44	24	1378	7	221	14	297	3	81	1	163	0	3	49	2143
45-54	33	1172	2	158	12	253	3	73	1	115	0	1	51	1772
55-64	18	760	11	147	4	83	5	45	2	76	0	4	40	1115
65-74	15	391	2	89	0	29	1	53	1	21	0	4	19	587
75+	23	378	7	89	1	10	6	64	0	7	2	11	39	559
Unknown	2	103	0	291	0	21	0	90	0	52	0	4	2	561
Total	198	8384	104	3249	56	1399	33	916	9	856	3	46	403	14850

Deaths and reported injuries by age group

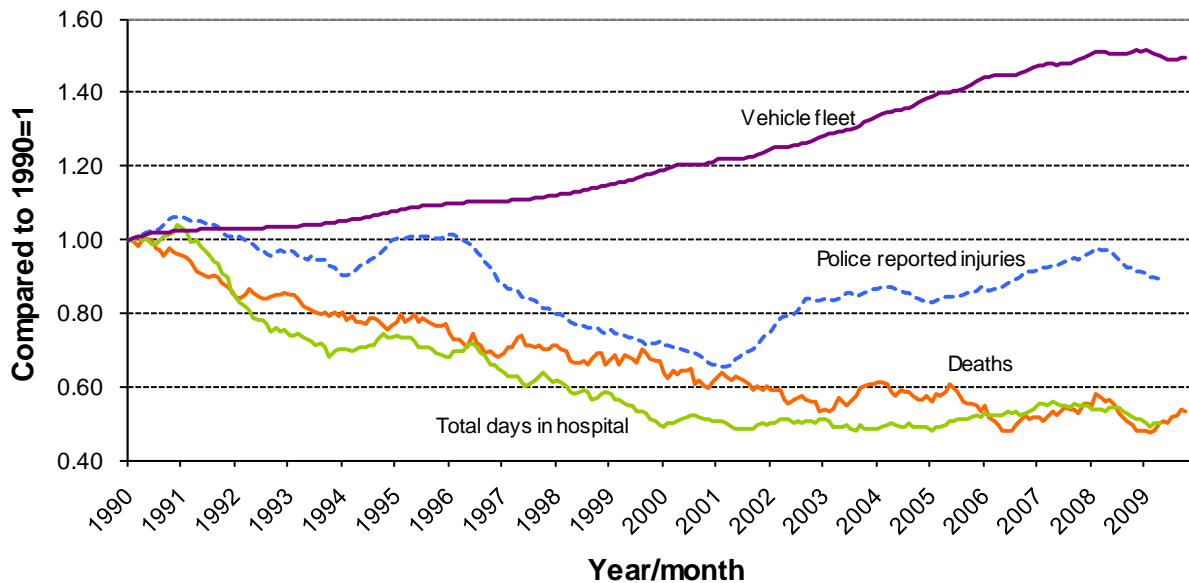


Types of road users killed and injured



Trends

Road crash casualties and vehicle fleet compared to 1990



Since 1990 the number of vehicles on the road has increased by 49% while Police reported injuries have dropped by 11%, road deaths have dropped by 47% and the number of days spent in hospital as a result of road crashes has dropped by 50%.

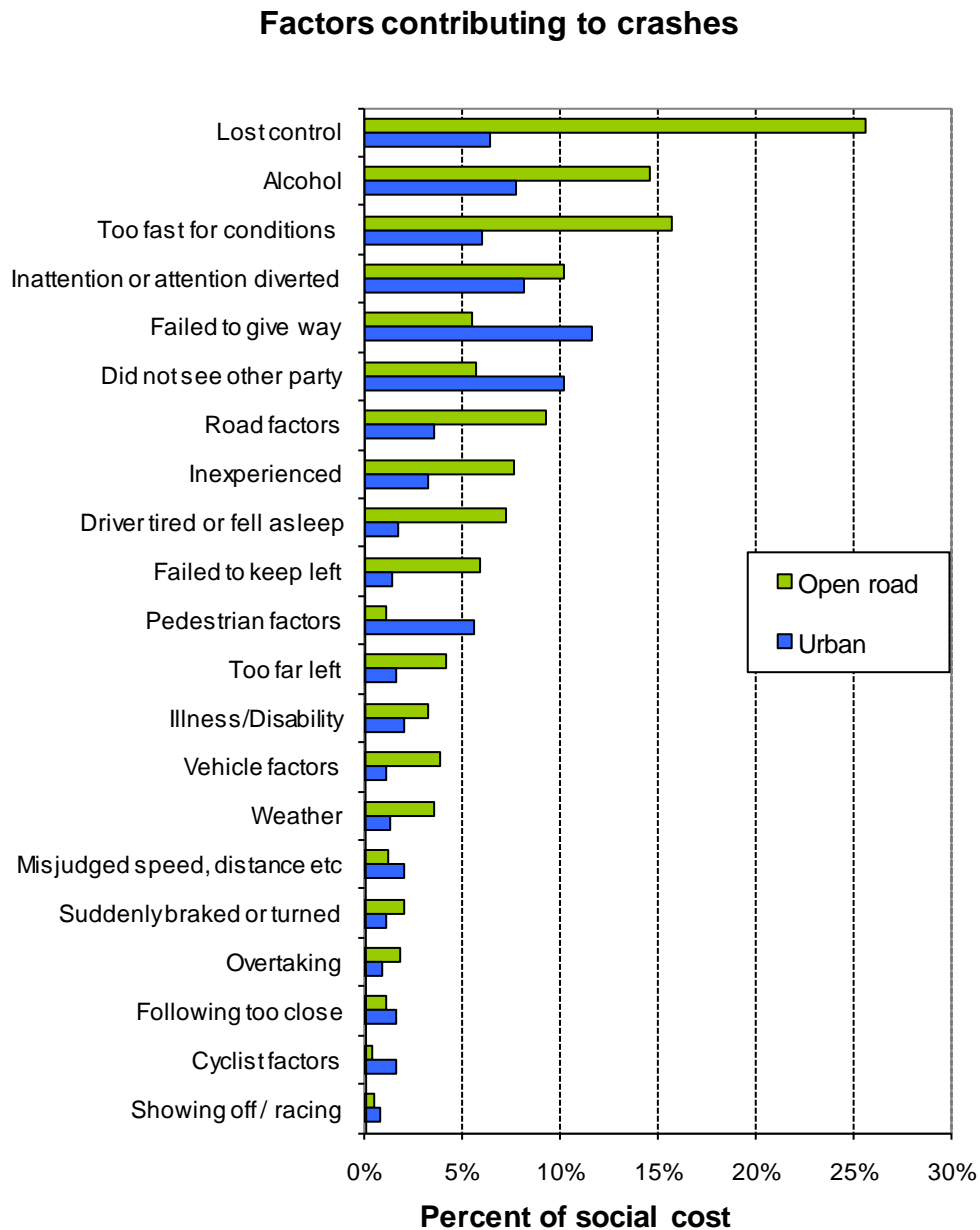
Crash outcomes and road user behaviour

	2000	2001	2002	2003	2004	2005	2006	2007	2008	2009
Road Crash Data										
Deaths										
Number of road deaths	462	455	405	461	435	405	393	421	365	403
Deaths per 10,000 vehicles	1.8	1.7	1.5	1.6	1.5	1.3	1.3	1.3	1.1	1.3
Deaths per 100,000 people	12.1	11.8	10.3	11.5	10.7	9.9	9.5	10.0	8.6	9.4
Injuries										
Reported injuries	10962	12368	13918	14372	13890	14456	15174	16013	15174	14850
Number hospitalised (all discharges)	5990	6700	6530	6540	6580	7210	7680	7440	7550	7829
Number hospitalised for over 1 day #	2846	2880	2750	2720	2710	2860	3020	3060	2880	2839
Number hospitalised for over 3 days #	1815	1794	1740	1700	1700	1840	1900	1990	1880	1880
Behavioural Measures										
Speed										
Rural speed, % over 100 km/h	52%	47%	43%	39%	39%	36%	32%	29%	30%	
Rural speed, mean (km/h)	101.1	100.2	99.1	98	97.8	97.1	96.4	96.3	96.6	
Rural speed, 85th percentile (km/h)	111	109	107	105	105	104	103	103	103	
Alcohol										
Number of drivers killed with excess alcohol	58	55	60	70	69	58	54	65	59	
Percent of drivers killed with excess alcohol	21%	21%	24%	27%	27%	25%	24%	27%	28%	
Occupant Restraints										
Seat belts worn by adults, front	90%	92%	92%	92%	94%	95%	95%	95%	95%	95%
Seat belts worn by adults, rear	76%	70%	78%	81%	86%	86%	89%	87%	87%	
Children restrained, 0-14 years	87%	89%	94%	96%	97%	94%	96%	94%	97%	97%
Child restraints used, 0-4 years	79%	82%	86%	86%	87%	89%	91%	91%	90%	
Cycle helmets										
Cycle helmets worn, weekday	93%	94%	89%	89%	92%	91%	94%	92%	92%	92%

Includes only the first stay in hospital

Note: Road deaths for 2009 are for the 12 months to the end of October 2009. Reported injuries for 2009 are for the 12 months to the end of April 2009.

Factors contributing to crashes – ranked by social cost*



Notes: Crash data for the 12 months to end of April 2009

Since there can be several contributing factors for a single crash the figures represented in this graph add to more than 100%.

* Social cost calculations include loss of life or life quality, loss of output due to injuries, medical and rehabilitation costs, legal and court costs and property damage.