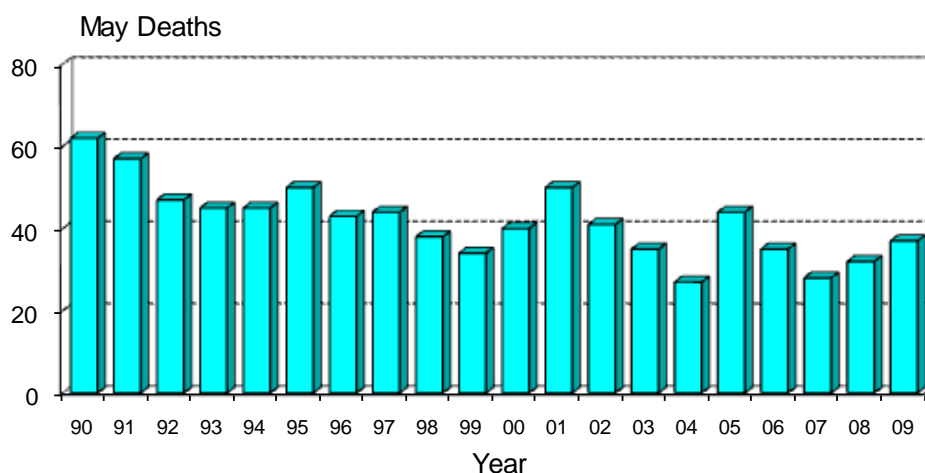


Monthly Road Crash Stats Update

May Road Deaths (2009)

The data presented here are provisional. Crash data as at – 9th June 2009

- Thirty-seven people died on New Zealand roads in May. This is five more than the number of deaths for May 2008 and is two more than the average May toll for the last five years.



- To the end of May this year 188 people have died on New Zealand roads. This is 20 more than at the same time last year.
- In the 12 months to the end of May 2009, 386 people were killed on our roads. This is 40 fewer than the number of deaths in the 12 months to the end of May 2008.
- During May, 18 of the deaths were car or van drivers, 10 were car or van passengers, four were pedestrians, three were motorcyclists, one was a cyclist and one was a truck driver.
- Twenty-nine of the 37 killed were in open road crashes. Eleven were in single vehicle crashes in which a driver lost control of the vehicle or ran off the road, nine were in overtaking collisions and seven were in head-on crashes.
- Of the 29 vehicle occupants killed, six were not restrained at the time of the crash.

Deaths and Police reported injuries by age, sex and type of road user

Deaths are for the 12 months to the end of May 2009. Reported injuries are for the 12 months to the end of November 2008.

Note: Preliminary fatal crash reports are submitted within 24 hours of a crash related death. Full injury crash reports are submitted only after the crash investigations are completed, so there is a lag in the reporting of injury crashes.

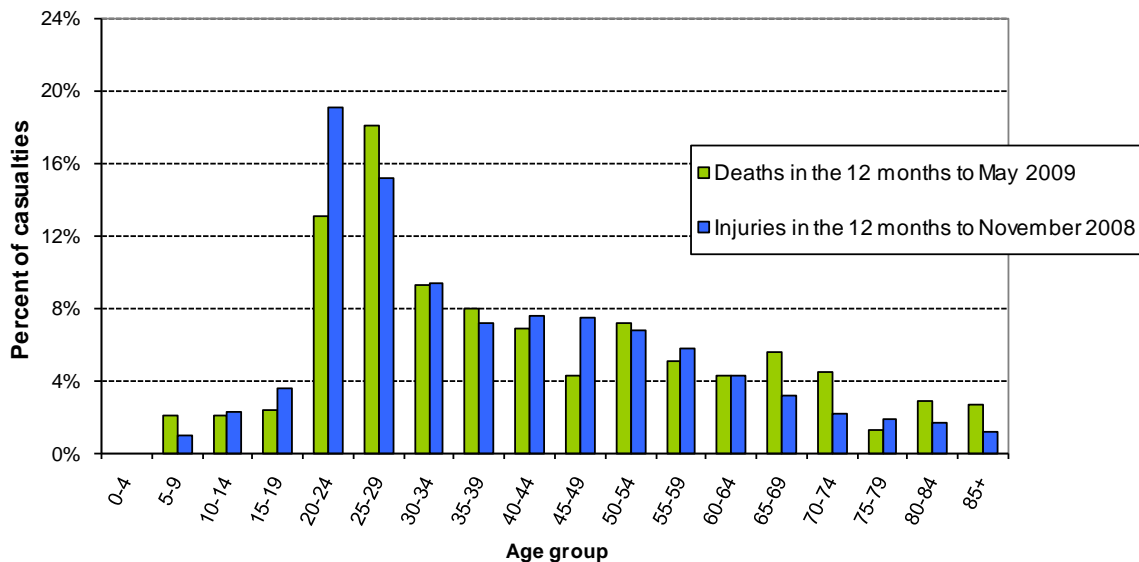
Road user type by sex

Sex	Drivers		Passengers		Motorcyclists		Pedestrians		Cyclists		Other		Total	
	Killed	Injured	Killed	Injured	Killed	Injured	Killed	Injured	Killed	Injured	Killed	Injured	Killed	Injured
Male	122	4796	60	1561	52	1127	25	505	7	652	1	29	267	8670
Female	60	3707	42	1851	5	256	7	436	4	249	1	16	119	6515
Total	182	8503	102	3412	57	1383	32	941	11	901	2	45	386	15185
% male	67%	56%	59%	46%	91%	81%	78%	54%	64%	72%	50%	64%	69%	57%

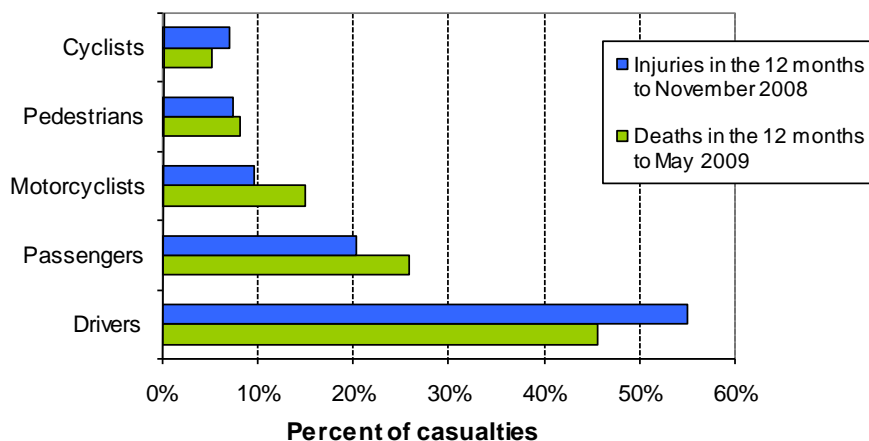
Road user type by age group

Age group	Drivers		Passengers		Motorcyclists		Pedestrians		Cyclists		Other		Total	
	Killed	Injured	Killed	Injured	Killed	Injured	Killed	Injured	Killed	Injured	Killed	Injured	Killed	Injured
Under-15	0	3	9	334	1	3	5	107	1	116	0	5	16	568
15-24	19	1464	28	1151	4	224	6	223	1	215	0	9	58	3286
25-34	50	2166	32	761	12	357	7	139	2	137	0	4	103	3564
35-44	25	1404	10	253	15	262	4	82	2	142	0	3	56	2146
45-54	23	1315	2	202	15	283	2	97	1	173	0	0	43	2070
55-64	22	974	3	164	6	167	3	66	1	102	0	1	35	1474
65-74	22	528	10	107	2	48	1	57	3	40	0	3	38	783
75+	15	469	6	119	1	13	3	66	0	16	1	10	26	693
Unknown	0	41	0	3	2	102	0	293	9	136	0	26	11	601
Total	176	8364	100	3094	58	1459	31	1130	20	1077	1	61	386	15185

Deaths and reported injuries by age group

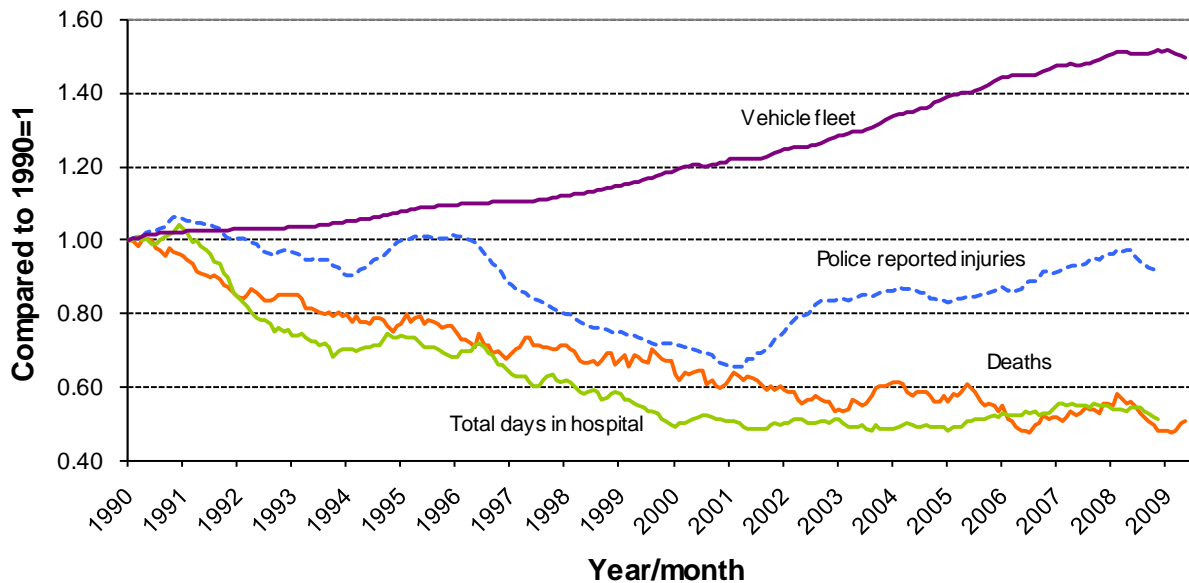


Types of road users killed and injured



Trends

Road crash casualties and vehicle fleet compared to 1990



Since 1990 the number of vehicles on the road has increased by 49% while Police reported injuries have dropped by 9%, road deaths have dropped by 49% and the number of days spent in hospital as a result of road crashes has dropped by 49%.

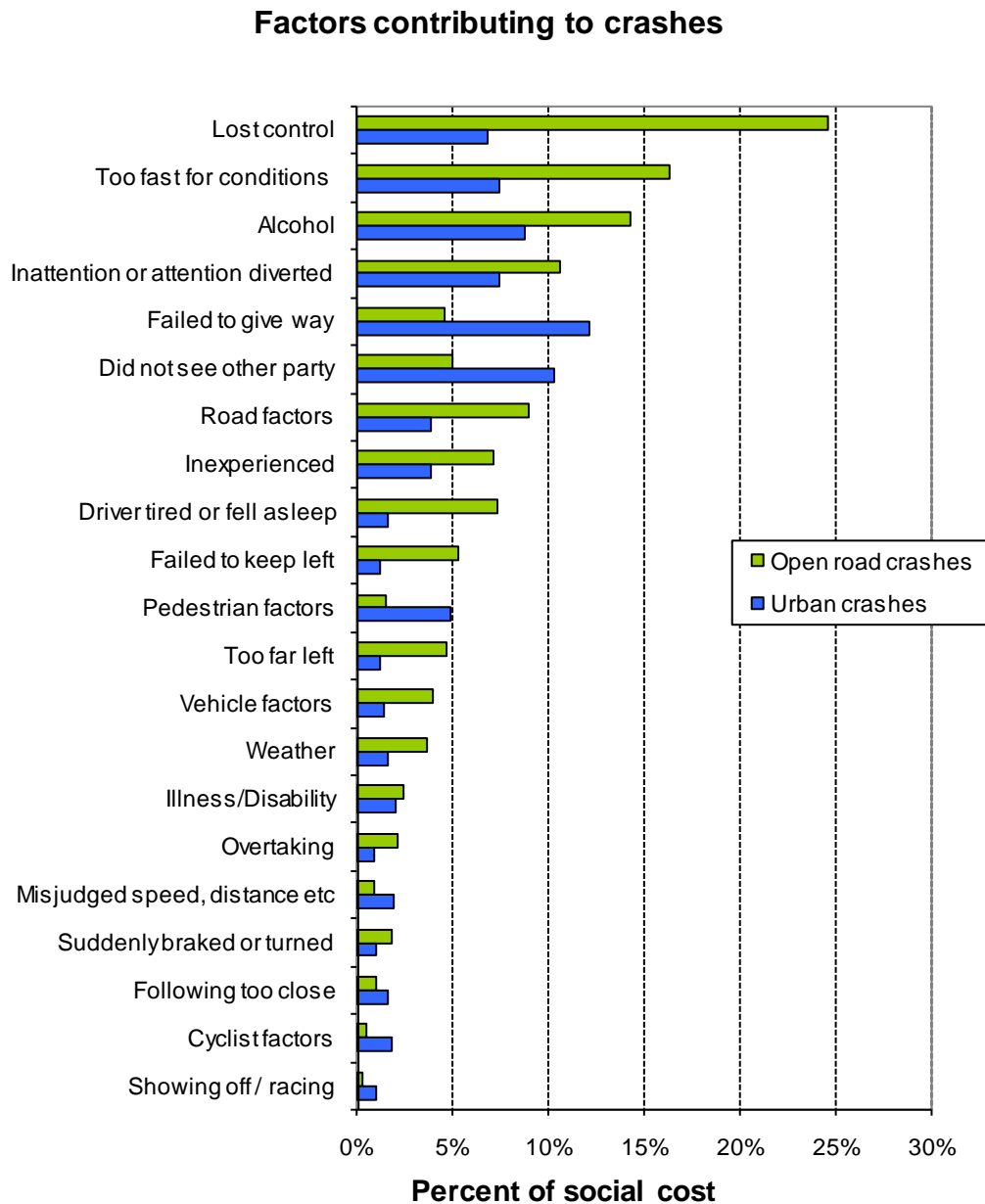
Crash outcomes and road user behaviour

	2000	2001	2002	2003	2004	2005	2006	2007	2008	2009
Road Crash Data										
Deaths										
Number of road deaths	462	455	405	461	435	405	393	421	366	386
Deaths per 10,000 vehicles	1.8	1.7	1.5	1.6	1.5	1.3	1.3	1.3	1.1	1.2
Deaths per 100,000 people	12.1	11.8	10.3	11.5	10.7	9.9	9.5	10.0	8.6	9.0
Injuries										
Reported injuries	10962	12368	13918	14372	13890	14456	15174	16013	15185	
Number hospitalised (all discharges)	5990	6700	6530	6540	6580	7210	7680	7440	7280	
Number hospitalised for over 1 day [#]	2846	2880	2750	2720	2710	2860	3020	3060	2847	
Number hospitalised for over 3 days [#]	1815	1794	1740	1700	1700	1840	1900	1990	1865	
Behavioural Measures										
Speed										
Rural speed, % over 100 km/h	52%	47%	43%	39%	39%	36%	32%	29%	30%	
Rural speed, mean (km/h)	101.1	100.2	99.1	98	97.8	97.1	96.4	96.3	96.6	
Rural speed, 85th percentile (km/h)	111	109	107	105	105	104	103	103	103	
Alcohol										
Number of drivers killed with excess alcohol	58	55	60	70	69	58	54	65	59	
Percent of drivers killed with excess alcohol	21%	21%	24%	27%	27%	25%	24%	27%	28%	
Occupant Restraints										
Seat belts worn by adults, front	90%	92%	92%	92%	94%	95%	95%	95%	95%	
Seat belts worn by adults, rear	76%	70%	78%	81%	86%	86%	89%	87%	87%	
Children restrained, 0-14 years	87%	89%	94%	96%	97%	94%	96%	94%	97%	
Child restraints used, 0-4 years	79%	82%	86%	86%	87%	89%	91%	91%	90%	
Cycle helmets										
Cycle helmets worn, weekday	93%	94%	89%	89%	92%	91%	94%	92%	92%	

[#] Includes only the first stay in hospital

Note: Road deaths for 2009 are for the 12 months to the end of May 2009. Reported injuries for 2008 are for the 12 months to the end of November 2008.

Factors contributing to crashes – ranked by social cost*



Notes: Crash data for the 12 months to end of November 2008

Since there can be several contributing factors for a single crash the figures represented in this graph add to more than 100%.

* Social cost calculations include loss of life or life quality, loss of output due to injuries, medical and rehabilitation costs, legal and court costs and property damage.