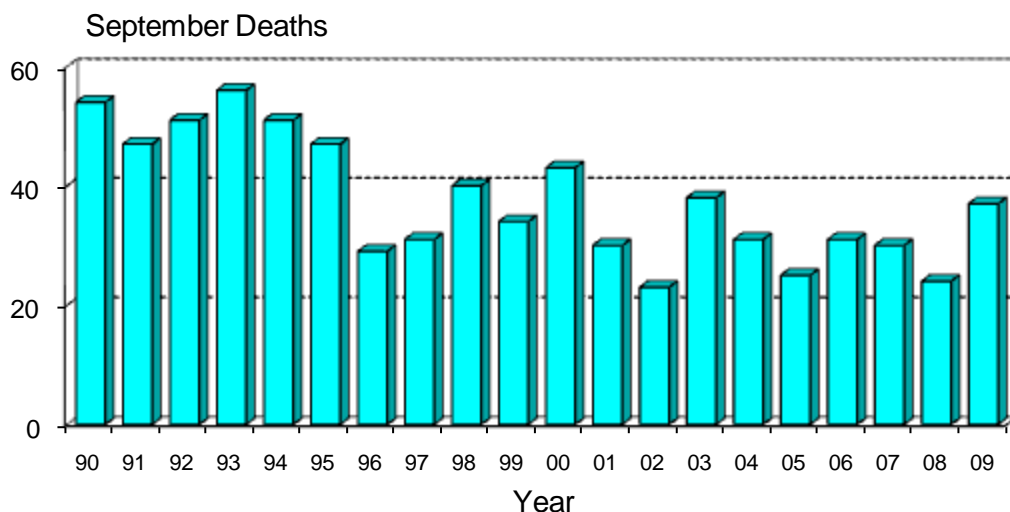


## Monthly Road Crash Stats Update

### September Road Deaths (2009)

The data presented here are provisional. Crash data as at – 16<sup>th</sup> October 2009

- Thirty-seven people died on New Zealand roads in September. This is thirteen more than the number of deaths for September 2008 and is nine more than the average September toll for the last five years.



- To the end of September this year 307 people have died on New Zealand roads. This is 43 more than at the same time last year.
- In the 12 months to the end of September 2009, 408 people were killed on our roads. This is twenty three more than the number of deaths in the 12 months to the end of September 2008.
- During September, 17 of the deaths were car or van drivers, nine were car or van passengers, eight were motorcyclists, two were pedestrians, one was a truck passenger, and one was a cyclist.
- Twenty-two of the 37 killed were in open road crashes. Seventeen were in single vehicle crashes in which a driver lost control of the vehicle or ran off the road, eleven were in head-on crashes and three were in overtaking and lane changing crashes.
- Of the 26 vehicle occupants killed, nine were not restrained at the time of the crash.

### Deaths and Police reported injuries by age, sex and type of road user

**Deaths are for the 12 months to the end of September 2009. Reported injuries are for the 12 months to the end of March 2009.**

*Note: Preliminary fatal crash reports are submitted within 24 hours of a crash related death. Full injury crash reports are submitted only after the crash investigations are completed, so there is a lag in the reporting of injury crashes.*

#### Road user type by sex

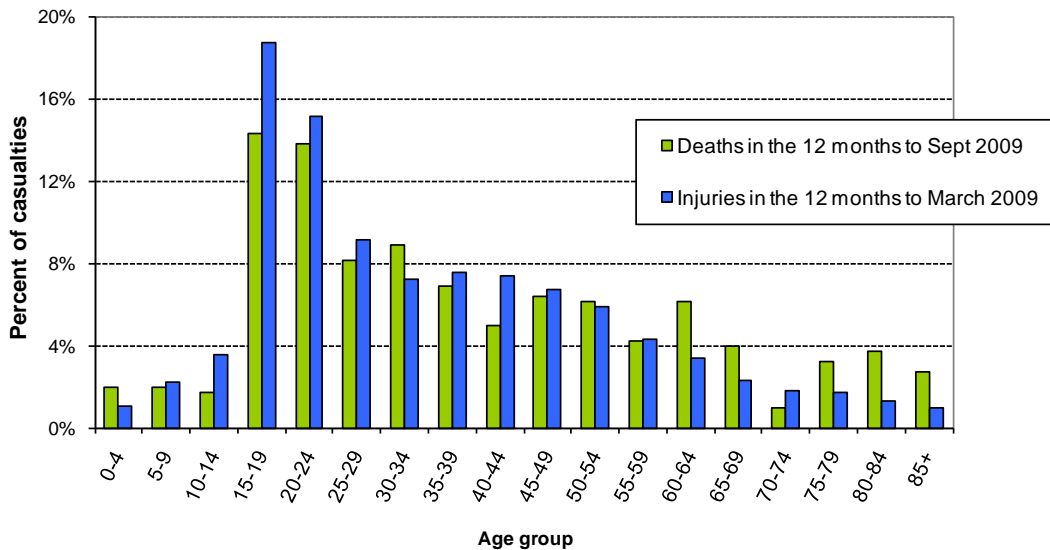
Sex	Drivers		Passengers		Motorcyclists		Pedestrians		Cyclists		Other		Total	
	Killed	Injured	Killed	Injured	Killed	Injured	Killed	Injured	Killed	Injured	Killed	Injured	Killed	Injured
Male	135	4700	57	1452	52	1158	26	487	7	637	3	30	280	8464
Female	66	3702	47	1789	5	250	7	434	2	239	1	12	128	6426

Total	201	8402	104	3241	57	1408	33	921	9	876	4	42	408	14890
% male	67%	56%	55%	45%	91%	82%	79%	53%	78%	73%	75%	71%	69%	57%

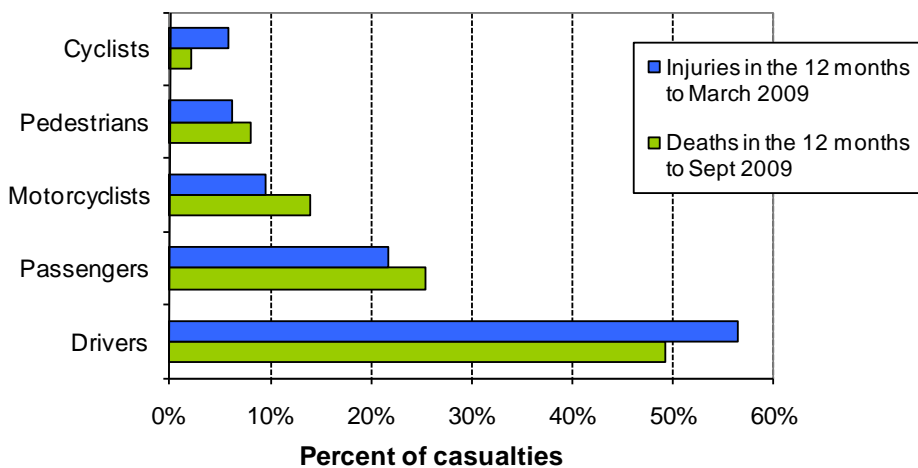
## Road user type by age group

Age group	Drivers		Passengers		Motorcyclists		Pedestrians		Cyclists		Other		Total	
	Killed	Injured	Killed	Injured	Killed	Injured	Killed	Injured	Killed	Injured	Killed	Injured	Killed	Injured
Under-15	1	12	16	561	0	33	4	220	1	139	1	7	23	972
15-24	49	2691	44	1349	9	432	10	195	2	173	0	7	114	4847
25-34	35	1525	14	356	16	238	2	97	2	122	0	3	69	2341
35-44	25	1378	7	213	13	295	2	81	1	165	0	3	48	2135
45-54	33	1174	1	158	13	268	3	75	1	120	0	1	51	1796
55-64	19	739	12	150	4	85	6	46	1	76	0	4	42	1100
65-74	15	400	2	84	1	24	1	54	1	20	0	4	20	586
75+	22	381	8	87	1	11	5	62	0	8	3	10	39	559
Unknown	2	102	0	283	0	22	0	91	0	53	0	3	2	554
<b>Total</b>	<b>201</b>	<b>8402</b>	<b>104</b>	<b>3241</b>	<b>57</b>	<b>1408</b>	<b>33</b>	<b>921</b>	<b>9</b>	<b>876</b>	<b>4</b>	<b>42</b>	<b>408</b>	<b>14890</b>

## Deaths and reported injuries by age group

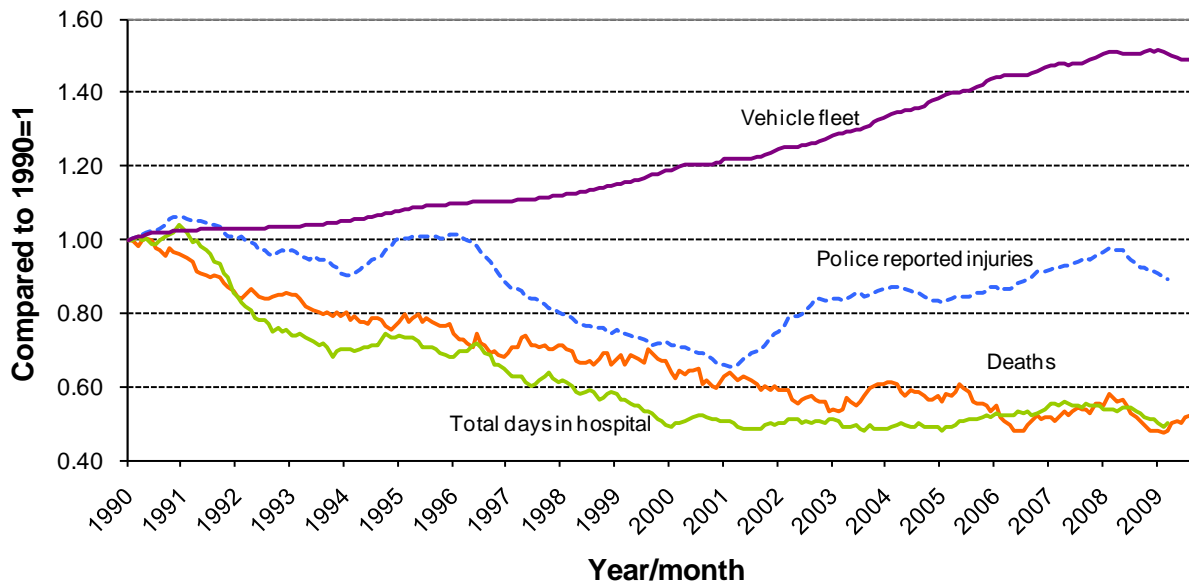


## Types of road users killed and injured



## Trends

### Road crash casualties and vehicle fleet compared to 1990



Since 1990 the number of vehicles on the road has increased by 49% while Police reported injuries have dropped by 11%, road deaths have dropped by 46% and the number of days spent in hospital as a result of road crashes has dropped by 50%.

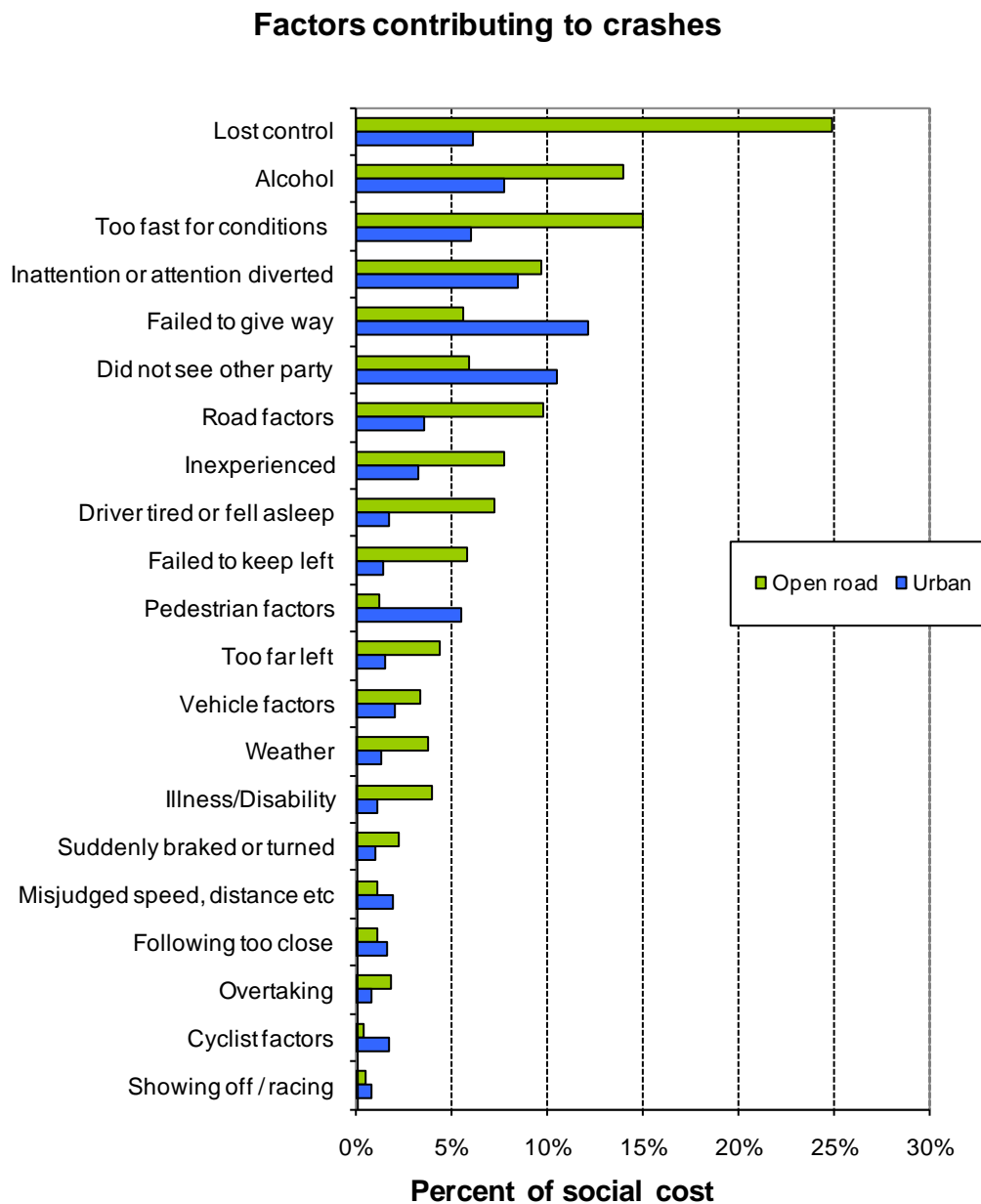
### Crash outcomes and road user behaviour

	2000	2001	2002	2003	2004	2005	2006	2007	2008	2009
<b>Road Crash Data</b>										
<b>Deaths</b>										
Number of road deaths	462	455	405	461	435	405	393	421	365	408
Deaths per 10,000 vehicles	1.8	1.7	1.5	1.6	1.5	1.3	1.3	1.3	1.1	1.3
Deaths per 100,000 people	12.1	11.8	10.3	11.5	10.7	9.9	9.5	10.0	8.6	9.6
<b>Injuries</b>										
Reported injuries	10962	12368	13918	14372	13890	14456	15174	16013	15174	14890
Number hospitalised (all discharges)	5990	6700	6530	6540	6580	7210	7680	7440	7490	7674
Number hospitalised for over 1 day #	2846	2880	2750	2720	2710	2860	3020	3060	2880	2831
Number hospitalised for over 3 days #	1815	1794	1740	1700	1700	1840	1900	1990	1880	1857
<b>Behavioural Measures</b>										
<b>Speed</b>										
Rural speed, % over 100 km/h	52%	47%	43%	39%	39%	36%	32%	29%	30%	
Rural speed, mean (km/h)	101.1	100.2	99.1	98	97.8	97.1	96.4	96.3	96.6	
Rural speed, 85th percentile (km/h)	111	109	107	105	105	104	103	103	103	
<b>Alcohol</b>										
Number of drivers killed with excess alcohol	58	55	60	70	69	58	54	65	59	
Percent of drivers killed with excess alcohol	21%	21%	24%	27%	27%	25%	24%	27%	28%	
<b>Occupant Restraints</b>										
Seat belts worn by adults, front	90%	92%	92%	92%	94%	95%	95%	95%	95%	95%
Seat belts worn by adults, rear	76%	70%	78%	81%	86%	86%	89%	87%	87%	
Children restrained, 0-14 years	87%	89%	94%	96%	97%	94%	96%	94%	97%	97%
Child restraints used, 0-4 years	79%	82%	86%	86%	87%	89%	91%	91%	90%	
<b>Cycle helmets</b>										
Cycle helmets worn, weekday	93%	94%	89%	89%	92%	91%	94%	92%	92%	92%

# Includes only the first stay in hospital

Note: Road deaths for 2009 are for the 12 months to the end of September 2009. Reported injuries for 2009 are for the 12 months to the end of March 2009.

## Factors contributing to crashes – ranked by social cost\*



Notes: Crash data for the 12 months to end of March 2009

Since there can be several contributing factors for a single crash the figures represented in this graph add to more than 100%.

\* Social cost calculations include loss of life or life quality, loss of output due to injuries, medical and rehabilitation costs, legal and court costs and property damage.