

NATIONAL HEALTH STATISTICS FOR ROAD USERS



CONTENTS

TABLES

| | | |
|---------|---|-----|
| Table 1 | Age and type of road user hospitalised | 110 |
| Table 2 | Number of days stay by age and type of road user hospitalised | 111 |
| Table 3 | Average number of days stay by age and type of road user hospitalised | 112 |

FIGURES

| | | |
|----------|---|-----|
| Figure 1 | Deaths from motor vehicle crashes as a percentage of all deaths for selected age group - 2005 | 108 |
| Figure 2 | Hospital discharges from motor vehicle crashes (by length of stay in hospital) | 108 |
| Figure 3 | Hospital discharges from motor vehicle crashes (re-admissions not included) | 109 |
| Figure 4 | Total days stay in hospital resulting from motor vehicle crashes | 109 |
| Figure 5 | Number of hospitalisations from road crashes by age and sex | 110 |
| Figure 6 | Total days stay in hospital from road crashes by age and sex | 111 |
| Figure 7 | Hospitalisations and days stay by road user type | 112 |
| Figure 8 | Number of pedal cyclists hospitalised from non-motor vehicle crashes | 113 |
| Figure 9 | Days stay in hospital for pedal cyclists injured in non-motor vehicle crashes | 113 |

NOTES

1. The material presented in this section is derived from data provided by the New Zealand Health Information Service, Ministry of Health.
2. The data includes those who, as a result of a motor vehicle crash, were injured seriously enough to be admitted to hospital. (Figures 8 and 9 show data for cyclists who were injured in non-motor vehicle crashes. These casualties are not included in the Ministry of Transport's data base which records primarily motor vehicle crashes.) The data base includes only those discharged during the 2008 calendar year.
3. Casualties who are readmitted for further treatment are included only once in the casualty count, but their total stay in hospital is recorded.

FIGURE 1: DEATHS FROM MOTOR VEHICLE CRASHES AS A PERCENTAGE OF ALL DEATHS FOR SELECTED AGE GROUP - 2005

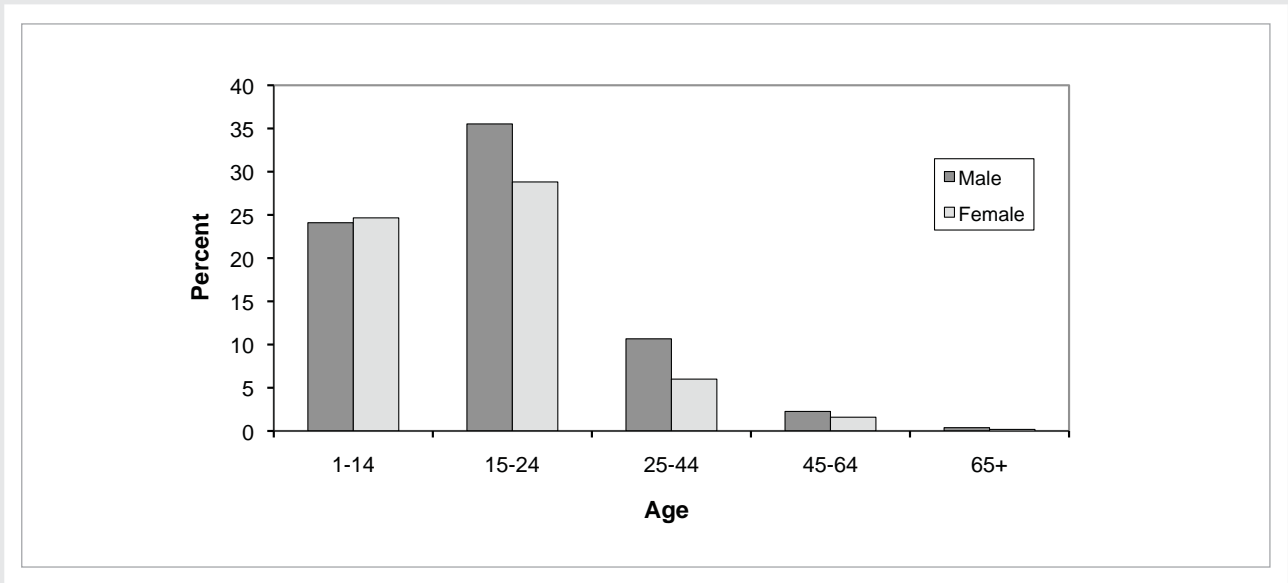


FIGURE 2: HOSPITAL DISCHARGES FROM MOTOR VEHICLE CRASHES (BY LENGTH OF STAY IN HOSPITAL)

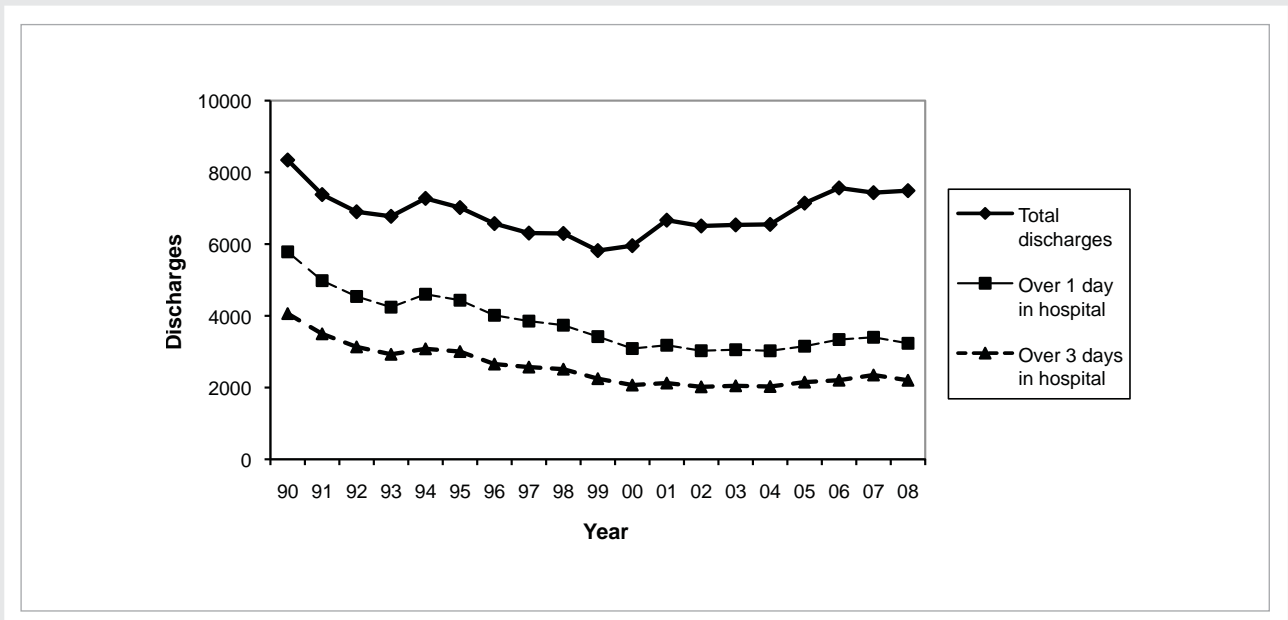


FIGURE 3: HOSPITAL DISCHARGES FROM MOTOR VEHICLE CRASHES (RE-ADMISSIONS NOT INCLUDED)

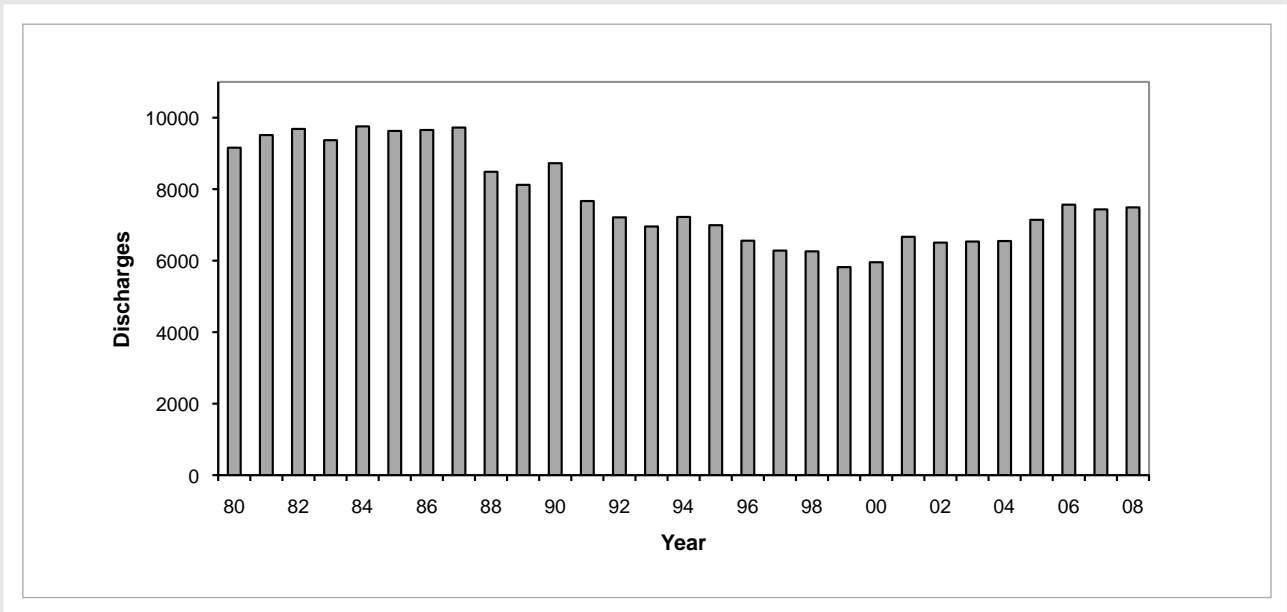


FIGURE 4: TOTAL DAYS STAY IN HOSPITAL RESULTING FROM MOTOR VEHICLE CRASHES

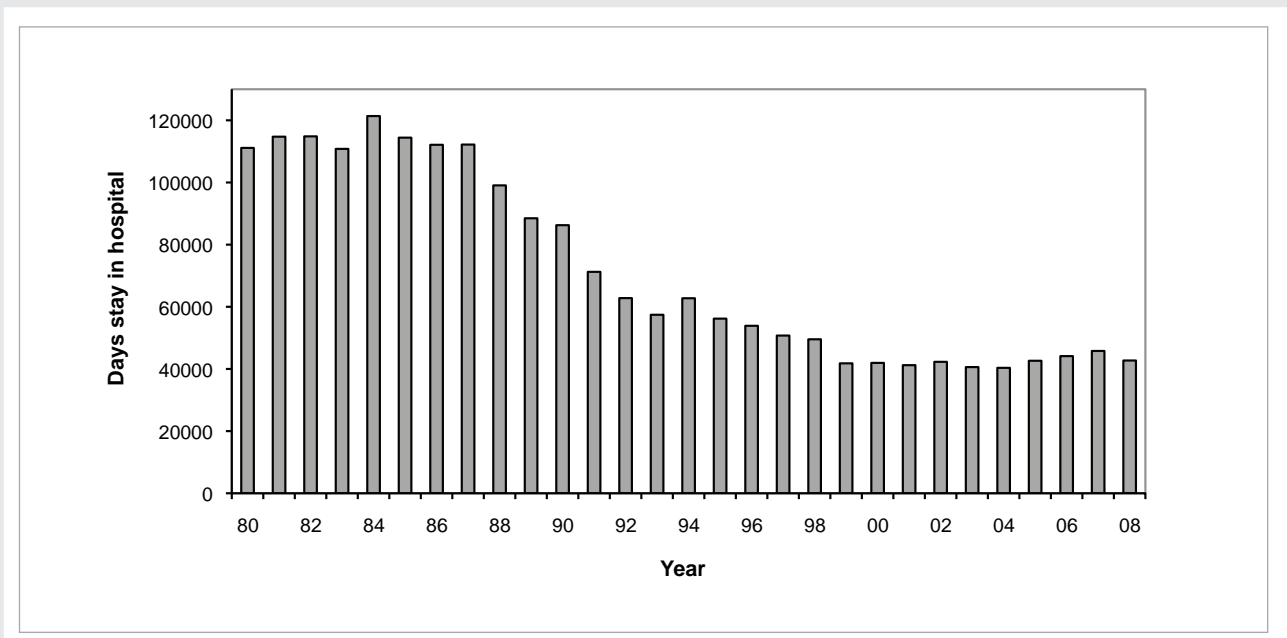


TABLE 1: AGE AND TYPES OF ROAD USERS HOSPITALISED YEAR ENDING 31 DECEMBER 2008

| Age group years | Drivers | Passengers | Motorcycle drivers | Motorcycle pillions | Pedal cyclists | Pedestrians | Other road users (1) | TOTAL casualties |
|-----------------|-------------|-------------|--------------------|---------------------|----------------|-------------|----------------------|------------------|
| Under 5 | - | 96 | - | 4 | 0 | 34 | 21 | 155 |
| 5 to 9 | - | 98 | 11 | 2 | 13 | 54 | 16 | 194 |
| 10 to 14 | 7 | 108 | 37 | 5 | 39 | 63 | 23 | 282 |
| 15 to 19 | 449 | 416 | 160 | 12 | 34 | 104 | 99 | 1274 |
| 20 to 24 | 408 | 231 | 161 | 6 | 23 | 84 | 83 | 996 |
| 25 to 29 | 266 | 115 | 123 | 5 | 22 | 43 | 56 | 630 |
| 30 to 34 | 230 | 92 | 107 | 5 | 20 | 39 | 44 | 537 |
| 35 to 39 | 208 | 75 | 119 | 7 | 21 | 33 | 54 | 517 |
| 40 to 44 | 227 | 57 | 146 | 4 | 38 | 38 | 31 | 541 |
| 45 to 49 | 205 | 62 | 130 | 7 | 36 | 43 | 44 | 527 |
| 50 to 54 | 176 | 32 | 103 | 8 | 21 | 36 | 26 | 402 |
| 55 to 59 | 145 | 44 | 62 | 4 | 15 | 22 | 41 | 333 |
| 60 to 64 | 103 | 39 | 29 | 1 | 16 | 22 | 26 | 236 |
| 65 to 69 | 79 | 26 | 24 | 1 | 5 | 26 | 32 | 193 |
| 70 to 74 | 70 | 33 | 13 | - | 4 | 23 | 30 | 173 |
| 75 to 79 | 75 | 30 | 6 | - | 3 | 28 | 45 | 187 |
| 80 and over | 116 | 44 | 6 | - | 4 | 47 | 96 | 313 |
| TOTALS | 2764 | 1598 | 1237 | 71 | 314 | 739 | 767 | 7490 |

NOTE: (1) Includes unknown
 SOURCE: NZHIS Ministry of Health.

FIGURE 5: NUMBER OF HOSPITALISATIONS FROM ROAD CRASHES BY AGE AND SEX

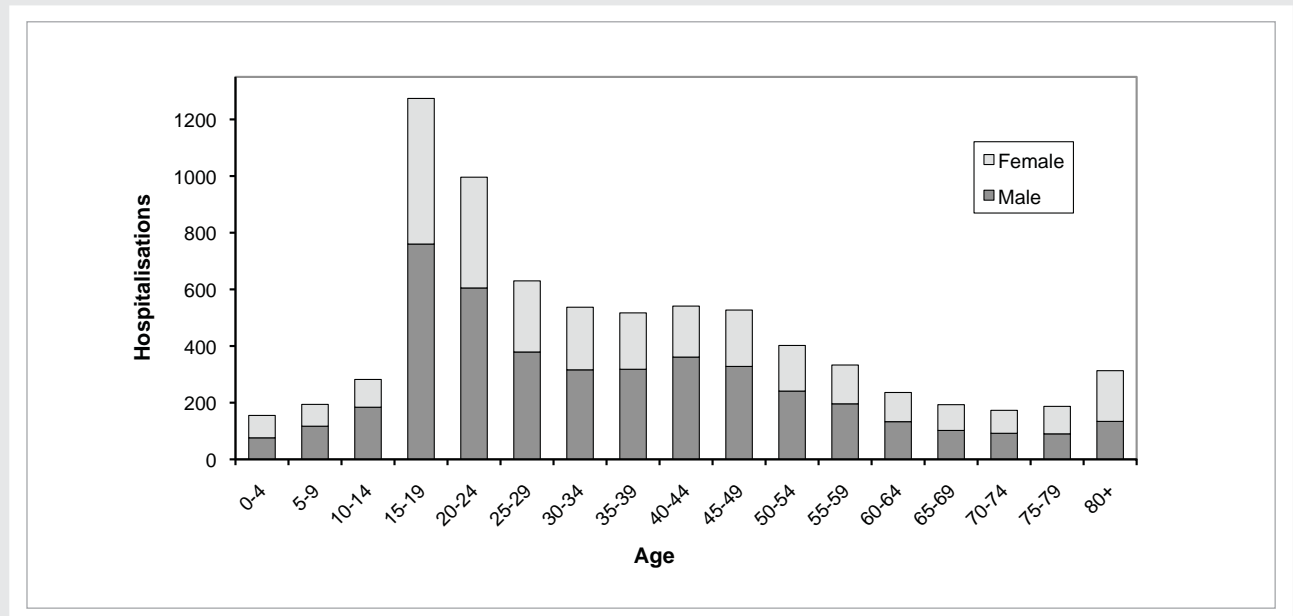


TABLE 2: NUMBER OF DAYS STAY BY AGE AND TYPE OF ROAD USER HOSPITALISED
YEAR ENDING 31 DECEMBER 2008

| Age group years | Drivers | Passengers | Motorcycle drivers | Motorcycle pillions | Pedal cyclists | Pedestrians | Other road users (1) | TOTAL casualties |
|-----------------|--------------|-------------|--------------------|---------------------|----------------|-------------|----------------------|------------------|
| Under 5 | - | 140 | - | 3 | 0 | 121 | 21 | 285 |
| 5 to 9 | - | 189 | 28 | 62 | 24 | 262 | 11 | 576 |
| 10 to 14 | 10 | 359 | 90 | 90 | 107 | 209 | 39 | 904 |
| 15 to 19 | 1955 | 1815 | 844 | 16 | 155 | 446 | 446 | 5677 |
| 20 to 24 | 1958 | 1335 | 742 | 42 | 260 | 304 | 299 | 4940 |
| 25 to 29 | 1055 | 741 | 704 | 8 | 58 | 169 | 211 | 2946 |
| 30 to 34 | 1020 | 505 | 458 | 47 | 80 | 148 | 216 | 2474 |
| 35 to 39 | 983 | 964 | 799 | 25 | 29 | 104 | 189 | 3093 |
| 40 to 44 | 1066 | 558 | 1073 | 63 | 104 | 326 | 165 | 3355 |
| 45 to 49 | 768 | 331 | 1206 | 124 | 161 | 310 | 291 | 3191 |
| 50 to 54 | 871 | 206 | 1092 | 41 | 125 | 202 | 181 | 2718 |
| 55 to 59 | 800 | 287 | 536 | 5 | 64 | 133 | 277 | 2102 |
| 60 to 64 | 858 | 300 | 335 | 3 | 48 | 113 | 168 | 1825 |
| 65 to 69 | 365 | 323 | 145 | 6 | 58 | 220 | 277 | 1394 |
| 70 to 74 | 501 | 181 | 300 | - | 30 | 238 | 113 | 1363 |
| 75 to 79 | 426 | 279 | 196 | - | 66 | 299 | 640 | 1906 |
| 80 and over | 1159 | 591 | 23 | - | 113 | 619 | 1466 | 3971 |
| TOTALS | 13795 | 9104 | 8571 | 535 | 1482 | 4223 | 5010 | 42720 |

NOTE: (1) Includes unknown
SOURCE: NZHIS Ministry of Health.

FIGURE 6: TOTAL DAYS STAY IN HOSPITAL FROM ROAD CRASHES BY AGE AND SEX

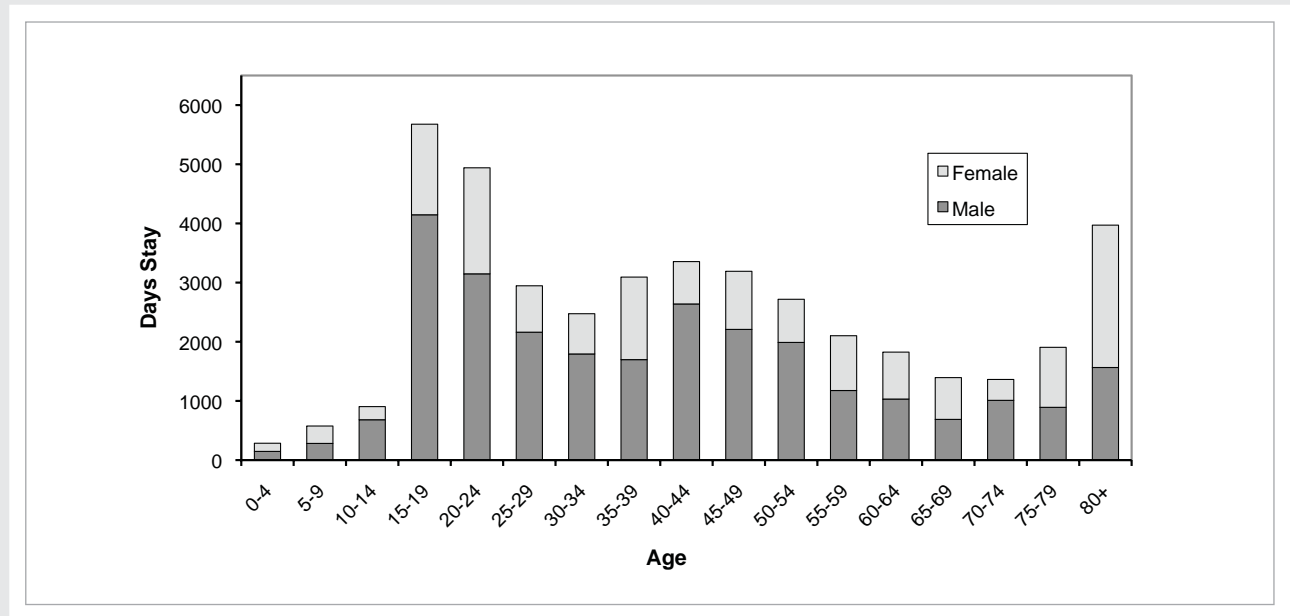


TABLE 3: AVERAGE NUMBER OF DAYS STAY BY AGE AND TYPE OF ROAD USER HOSPITALISED YEAR ENDING 31 DECEMBER 2008

| Age group years | Drivers | Passengers | Motorcycle drivers | Motorcycle pillions | Pedal cyclists | Pedestrians | Other road users (1) | TOTAL casualties |
|-----------------|----------|------------|--------------------|---------------------|----------------|-------------|----------------------|------------------|
| Under 5 | - | 1 | - | - | - | 4 | 1 | 2 |
| 5 to 9 | - | 2 | - | - | - | 5 | - | 3 |
| 10 to 14 | - | 3 | 2 | - | 3 | 3 | 2 | 3 |
| 15 to 19 | 4 | 4 | 5 | - | 5 | 4 | 5 | 4 |
| 20 to 24 | 5 | 6 | 5 | - | 11 | 4 | 4 | 5 |
| 25 to 29 | 4 | 6 | 6 | - | 3 | 4 | 4 | 5 |
| 30 to 34 | 4 | 5 | 4 | - | - | 4 | 5 | 5 |
| 35 to 39 | 5 | 13 | 7 | - | 1 | 3 | 4 | 6 |
| 40 to 44 | 5 | 10 | 7 | - | 3 | 9 | 5 | 6 |
| 45 to 49 | 4 | 5 | 9 | - | 4 | 7 | 7 | 6 |
| 50 to 54 | 5 | 6 | 11 | - | 6 | 6 | 7 | 7 |
| 55 to 59 | 6 | 7 | 9 | - | - | 6 | 7 | 6 |
| 60 to 64 | 8 | 8 | 12 | - | - | 5 | 6 | 8 |
| 65 to 69 | 5 | 12 | 6 | - | - | 8 | 9 | 7 |
| 70 to 74 | 7 | 5 | - | - | - | 10 | 4 | 8 |
| 75 to 79 | 6 | 9 | - | - | - | 11 | 14 | 10 |
| 80 and over | 10 | 13 | - | - | - | 13 | 15 | 13 |
| TOTALS | 5 | 6 | 7 | 8 | 5 | 6 | 7 | 6 |

NOTE: (1) Includes unknown Average days stay are not calculated when there are fewer than 20 individuals
 SOURCE: NZHIS Ministry of Health.

FIGURE 7: HOSPITALISATIONS AND DAYS STAY BY ROAD USER TYPE

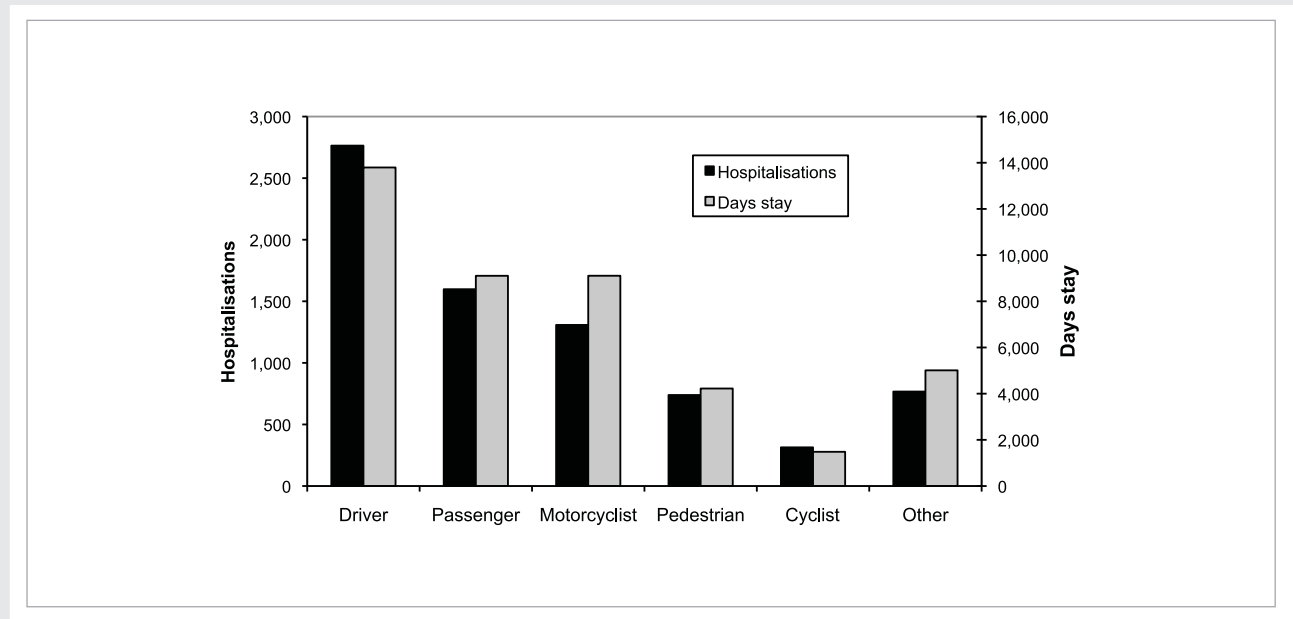


FIGURE 8: NUMBER OF PEDAL CYCLISTS HOSPITALISED FROM NON-MOTOR VEHICLE CRASHES

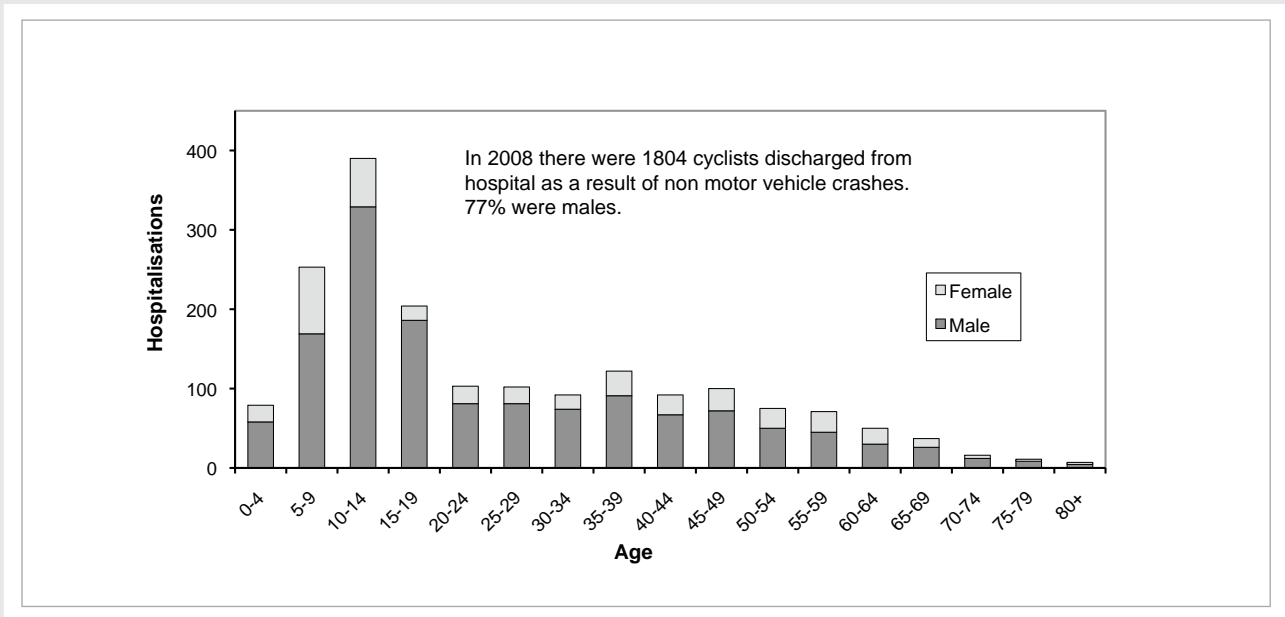


FIGURE 9: DAYS STAY IN HOSPITAL FOR PEDAL CYCLISTS INJURED IN NON-MOTOR VEHICLE CRASHES

