

**SECTION 5: PEDAL CYCLIST CASUALTIES AND CRASHES**

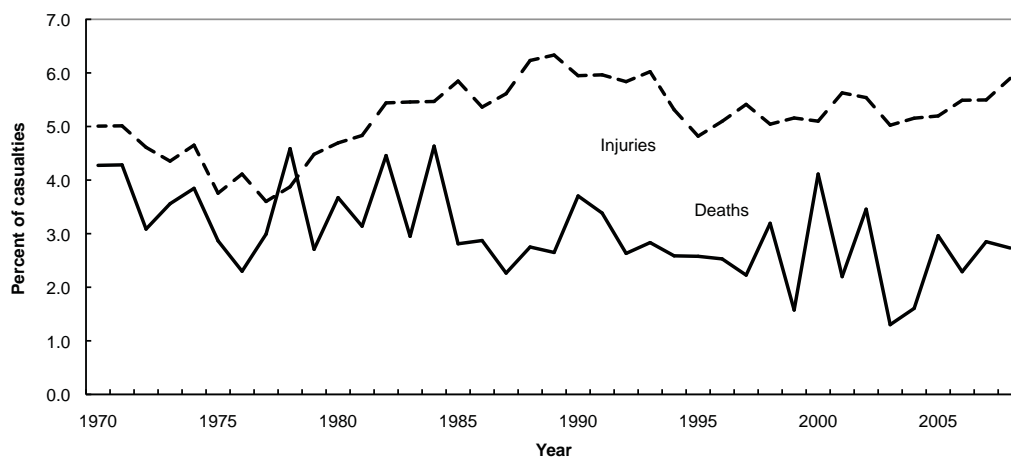


Photo courtesy of NZTA

**TABLE 36: PEDAL CYCLIST CASUALTIES AND POPULATION STATISTICS HISTORICAL**  
YEAR ENDING 31 DECEMBER

Year	Population	Injured	Killed	Per 100 000 population	
				Injured	Killed
1975	3143700	745	18	24	0.6
1976	3163400	736	14	23	0.4
1977	3166400	631	21	20	0.7
1978	3165200	588	30	19	0.9
1979	3163900	623	15	20	0.5
1980	3164100	745	22	24	0.7
1981	3195800	748	21	23	0.7
1982	3229800	881	30	27	0.9
1983	3269500	900	19	28	0.6
1984	3299500	958	31	29	0.9
1985	3311200	1106	21	33	0.6
1986	3316700	1012	22	31	0.7
1987	3349100	1051	18	31	0.5
1988	3356200	1081	20	32	0.6
1989	3384510	1051	20	31	0.6
1990	3429100	1054	27	31	0.8
1991	3449700	1000	22	29	0.6
1992	3485400	941	17	27	0.5
1993	3524800	910	17	26	0.5
1994	3577200	882	15	25	0.4
1995	3643200	813	15	22	0.4
1996	3717400	754	13	20	0.3
1997	3761100	724	12	19	0.3
1998	3790900	626	16	17	0.4
1999	3810700	619	8	16	0.2
2000	3830800	559	19	15	0.5
2001	3850100	696	10	18	0.3
2002	3939100	771	14	20	0.4
2003	4009200	722	6	18	0.1
2004	4060900	716	7	18	0.2
2005	4098300	751	12	18	0.3
2006	4139500	833	9	20	0.2
2007	4228300	880	12	21	0.3
2008	4268600	895	10	21	0.2

NOTE: Population from 1997 on is from Statistics NZ INFOS series DPEA.SDBC.

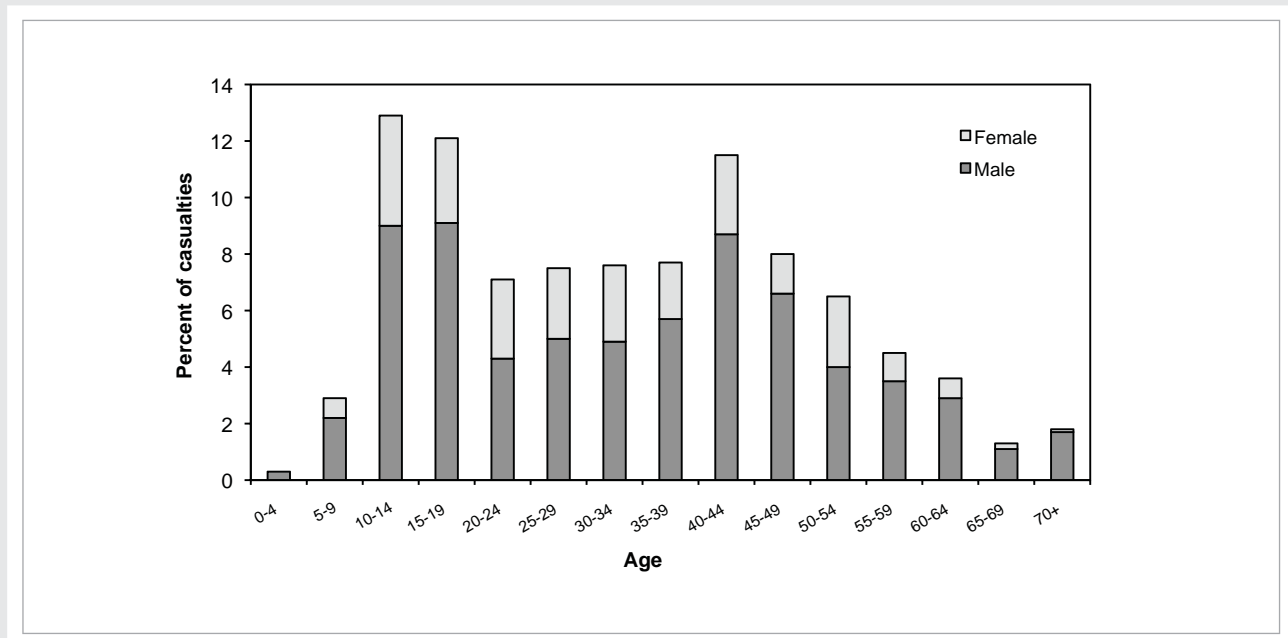
**FIGURE 22: PEDAL CYCLISTS AS A PERCENTAGE OF ALL ROAD CRASH CASUALTIES**

**TABLE 37: PEDAL CYCLIST CASUALTIES AND POPULATION STATISTICS BY AGE GROUP**  
YEAR ENDING 31 DECEMBER 2008

Age group	Population	Injured	Killed	Per 100 000 population	
				Injured	Killed
Under 5	299990	3	0	1	0
5 to 9	287700	26	0	9	0
10 to 14	301660	116	0	39	0
15 to 19	322530	108	1	34	0.3
20 to 24	296630	63	1	21	0.3
25 to 29	272990	68	0	25	0
30 to 34	271020	67	1	25	0.4
35 to 39	312490	70	0	22	0
40 to 44	314110	104	0	33	0
45 to 49	319780	71	2	22	0.6
50 to 54	276430	59	0	21	0
55 to 59	243900	41	1	17	0.4
60 to 64	211630	30	2	14	0.9
65 to 69	165950	11	1	7	0.6
70 to 74	125890	9	1	7	0.8
75 to 79	104570	3	0	3	0
80 and over	141360	2	0	1	0
Unknown age	0	44	0	-	-
<b>TOTAL</b>	<b>4268630</b>	<b>895</b>	<b>10</b>	<b>21</b>	<b>0.2</b>

NOTE: Population is the resident population as at 30 June. INFOS series DAEA.SJCG01 etc.

**FIGURE 23: PERCENTAGE OF CYCLIST CASUALTIES BY AGE AND GENDER**



**TABLE 38: MOVEMENT CLASSIFICATION OF INJURY CRASHES INVOLVING PEDAL CYCLISTS ON OPEN AND URBAN ROADS YEAR ENDED 31 DECEMBER 2008**

Movement Classification	URBAN ROADS			OPEN ROADS			UNKNOWN AREA	Total number of injury crashes
	Number of injury crashes	As a % of all injury crashes	Number during darkness	Number of injury crashes	As a % of all injury crashes	Number during darkness	Number of injury crashes	
Overtaking or lane change	62	7.0	5	23	2.6	2	-	85
Head on (not overtaking)	21	2.4	4	3	0.3	-	-	24
LOSS CONTROL OR OFF ROAD:								
On straight	2	0.2	1	3	0.3	-	-	5
While cornering	6	0.7	1	2	0.2	-	-	8
Collision with obstruction	76	8.6	8	5	0.6	1	-	81
Rear end	22	2.5	3	11	1.2	-	-	33
INTERSECTIONS OR DRIVEWAYS:								
Turning versus same direction	75	8.5	9	6	0.7	-	-	81
Crossing no turns	128	14.5	23	5	0.6	1	-	133
Crossing vehicle turning	112	12.7	25	8	0.9	1	-	120
Vehicles merging	80	9.0	10	3	0.3	-	-	83
Right turn against	121	13.7	23	7	0.8	2	-	128
Vehicle manoeuvring	92	10.4	9	3	0.3	-	-	95
Pedestrian crossing road	4	0.5	2	-	-	-	-	4
Pedestrian other	-	-	-	-	-	-	-	-
Miscellaneous	2	0.2	2	2	0.2	-	-	4
<b>TOTALS</b>	<b>803</b>	<b>90.8</b>	<b>125</b>	<b>81</b>	<b>9.2</b>	<b>7</b>	<b>-</b>	<b>884</b>

NOTE: This table does not include fatal crashes (see Table 39).

**TABLE 39: MOVEMENT CLASSIFICATION OF FATAL CRASHES INVOLVING PEDAL CYCLISTS ON OPEN AND URBAN ROADS YEAR ENDING 31 DECEMBER 2008**

Movement Classification	URBAN ROADS			OPEN ROADS			UNKNOWN AREA	Total number of fatal crashes
	Number of fatal crashes	As a % of all fatal crashes	Number during darkness	Number of fatal crashes	As a % of all fatal crashes	Number during darkness	Number of fatal crashes	
Overtaking or lane change	2	20	1	1	10	-	-	3
Head on (not overtaking)	-	-	-	-	-	-	-	-
LOSS CONTROL OR OFF ROAD:								
On straight	-	-	-	-	-	-	-	-
While cornering	-	-	-	-	-	-	-	-
Collision with obstruction	1	10	-	-	-	-	-	1
Rear end	-	-	-	4	40	1	-	4
INTERSECTIONS OR DRIVEWAYS:								
Turning versus same direction	-	-	-	-	-	-	-	-
Crossing no turns	1	10	-	-	-	-	-	1
Crossing vehicle turning	-	-	-	-	-	-	-	-
Vehicles merging	1	10	-	-	-	-	-	1
Right turn against	-	-	-	-	-	-	-	-
Vehicle manoeuvring	-	-	-	-	-	-	-	-
Pedestrian crossing road	-	-	-	-	-	-	-	-
Pedestrian other	-	-	-	-	-	-	-	-
Miscellaneous	-	-	-	-	-	-	-	-
<b>TOTALS</b>	<b>5</b>	<b>50</b>	<b>1</b>	<b>5</b>	<b>50</b>	<b>1</b>	<b>-</b>	<b>10</b>

NOTE: A pedal cyclist can be involved in a crash and escape injury or death.

For movement classification see Note 9(a).

For area classification see Note 11.

**TABLE 40: CRASHES INVOLVING PEDAL CYCLISTS BY TIME OF DAY AND DAY OF WEEK**  
YEAR ENDED 31 DECEMBER 2008

Time of Day	Monday	Tuesday	Wednesday	Thursday	Friday	Saturday	Sunday	TOTALS
Midnight to 12.59am	1 (-)	- (-)	- (-)	1 (-)	- (-)	1 (-)	1 (-)	4 (-)
1am to 1.59am	- (-)	1 (-)	- (-)	- (-)	- (-)	- (-)	- (-)	1 (-)
2am to 2.59am	- (-)	- (-)	- (-)	- (-)	- (-)	- (-)	- (-)	- (-)
3am to 3.59am	- (-)	- (-)	- (-)	- (-)	- (-)	- (-)	1 (-)	1 (-)
4am to 4.59am	- (-)	1 (-)	- (-)	- (-)	- (-)	- (-)	- (-)	1 (-)
5am to 5.59am	1 (-)	2 (-)	1 (-)	- (-)	1 (-)	1 (-)	- (-)	6 (-)
6am to 6.59am	1 (-)	4 (-)	6 (-)	7 (-)	1 (-)	2 (-)	1 (-)	22 (-)
7am to 7.59am	11 (-)	13 (-)	13 (-)	18 (-)	5 (-)	3 (-)	2 (-)	65 (-)
8am to 8.59am	27 (1)	26 (-)	34 (-)	34 (1)	15 (-)	5 (-)	4 (-)	145 (2)
9am to 9.59am	7 (-)	9 (-)	5 (-)	8 (-)	10 (-)	12 (1)	6 (-)	57 (1)
10am to 10.59am	4 (-)	7 (-)	6 (1)	5 (-)	5 (-)	7 (-)	7 (1)	41 (2)
11am to 11.59am	5 (-)	4 (1)	2 (-)	5 (-)	5 (-)	8 (-)	7 (-)	36 (1)
noon to 12.59pm	2 (-)	5 (-)	4 (-)	7 (-)	7 (-)	6 (-)	6 (-)	37 (-)
1pm to 1.59pm	5 (-)	2 (-)	- (-)	4 (-)	5 (-)	4 (-)	6 (-)	26 (-)
2pm to 2.59pm	4 (-)	7 (-)	13 (-)	8 (-)	8 (-)	7 (-)	6 (-)	53 (-)
3pm to 3.59pm	19 (-)	15 (-)	18 (-)	18 (-)	19 (-)	4 (-)	7 (-)	100 (-)
4pm to 4.59pm	8 (-)	12 (-)	10 (-)	15 (-)	13 (-)	9 (-)	7 (-)	74 (-)
5pm to 5.59pm	23 (1)	20 (-)	28 (-)	20 (1)	12 (-)	4 (-)	2 (-)	109 (2)
6pm to 6.59pm	4 (-)	15 (1)	7 (-)	11 (-)	10 (-)	2 (-)	3 (-)	52 (1)
7pm to 7.59pm	3 (-)	8 (-)	7 (-)	6 (-)	3 (-)	2 (-)	1 (-)	30 (-)
8pm to 8.59pm	1 (-)	2 (-)	1 (-)	1 (-)	- (-)	1 (-)	1 (-)	7 (-)
9pm to 9.59pm	- (-)	- (-)	1 (-)	- (-)	3 (-)	- (-)	- (1)	4 (1)
10pm to 10.59pm	- (-)	1 (-)	1 (-)	1 (-)	- (-)	1 (-)	- (-)	4 (-)
11pm to 11.59pm	- (-)	- (-)	- (-)	- (-)	- (-)	- (-)	1 (-)	1 (-)
Unknown time	1 (-)	2 (-)	- (-)	2 (-)	- (-)	2 (-)	1 (-)	8 (-)
<b>TOTALS</b>	<b>127 (2)</b>	<b>156 (2)</b>	<b>157 (1)</b>	<b>171 (2)</b>	<b>122 (-)</b>	<b>81 (1)</b>	<b>70 (2)</b>	<b>884 (10)</b>

NOTE: The figures in brackets are fatal crashes and are not included in the adjacent totals.

**FIGURE 24: CYCLIST CASUALTIES BY TIME OF DAY AND DAY OF WEEK**

