

SECTION 6: PEDESTRIAN CASUALTIES AND CRASHES



TABLE 41: PEDESTRIAN CASUALTIES AND POPULATION STATISTICS HISTORICAL
YEAR ENDING 31 DECEMBER

Year	Population	Injured	Killed	Per 100 000 population	
				Injured	Killed
1975	3143700	1760	112	56	3.6
1976	3163400	1473	102	47	3.2
1977	3166400	1447	124	46	3.9
1978	3165200	1224	116	39	3.7
1979	3163900	1157	106	37	3.4
1980	3164100	1246	98	39	3.1
1981	3195800	1121	104	35	3.3
1982	3229800	1128	89	35	2.8
1983	3269500	1144	103	35	3.2
1984	3299500	1343	119	41	3.6
1985	3311200	1225	125	37	3.8
1986	3316700	1265	112	38	3.4
1987	3349100	1256	110	38	3.3
1988	3356200	1119	83	33	2.5
1989	3384510	1039	81	31	2.4
1990	3429100	1161	104	34	3.0
1991	3449700	1015	88	29	2.6
1992	3485400	1007	76	29	2.2
1993	3524800	949	74	27	2.1
1994	3577200	1063	54	30	1.5
1995	3643200	1053	71	29	1.9
1996	3717400	969	63	26	1.7
1997	3761100	925	54	25	1.4
1998	3790900	930	71	25	1.9
1999	3810700	895	63	24	1.7
2000	3830800	953	35	25	0.9
2001	3850100	986	52	26	1.4
2002	3939100	1065	45	27	1.1
2003	4009200	1058	58	26	1.4
2004	4060900	999	38	25	0.9
2005	4098300	943	31	23	0.8
2006	4139500	960	44	23	1.1
2007	4228300	868	45	21	1.1
2008	4268600	939	31	22	0.7

NOTE: Population from 1997 on is from Statistics NZ INFOS series DPEA.SDBC.

FIGURE 25: PEDESTRIANS AS A PERCENTAGE OF ALL ROAD CRASH CASUALTIES

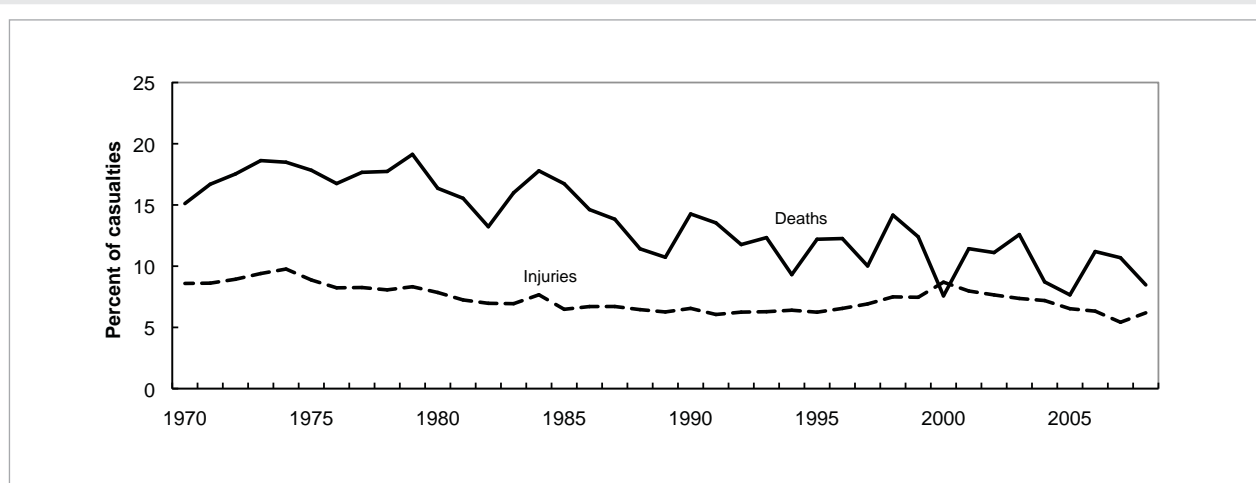


TABLE 42: PEDESTRIAN CASUALTIES AND POPULATION STATISTICS BY AGE GROUPS
YEAR ENDING 31 DECEMBER 2008

Age group	Population	Injured	Killed	Per 100 000 population	
				Injured	Killed
Under 5	299990	30	1	10	0.3
5 to 9	287700	76	1	26	0.3
10 to 14	301660	108	2	36	0.7
15 to 19	322530	115	2	36	0.6
20 to 24	296630	82	4	28	1.3
25 to 29	272990	55	2	20	0.7
30 to 34	271020	46	2	17	0.7
35 to 39	312490	40	2	13	0.6
40 to 44	314110	54	2	17	0.6
45 to 49	319780	42	1	13	0.3
50 to 54	276430	38	2	14	0.7
55 to 59	243900	21	2	9	0.8
60 to 64	211630	26	1	12	0.5
65 to 69	165950	33	0	20	0
70 to 74	125890	23	3	18	2.4
75 to 79	104570	29	3	28	2.9
80 and over	141360	31	1	22	0.7
Unknown age	0	90	0	-	-
TOTAL	4268630	939	31	22	0.7

NOTE: Population is the resident population as at 30 June. INFOS series DAEA.SJCG01 etc.

FIGURE 26: PERCENTAGE OF PEDESTRIAN CASUALTIES BY AGE AND SEX

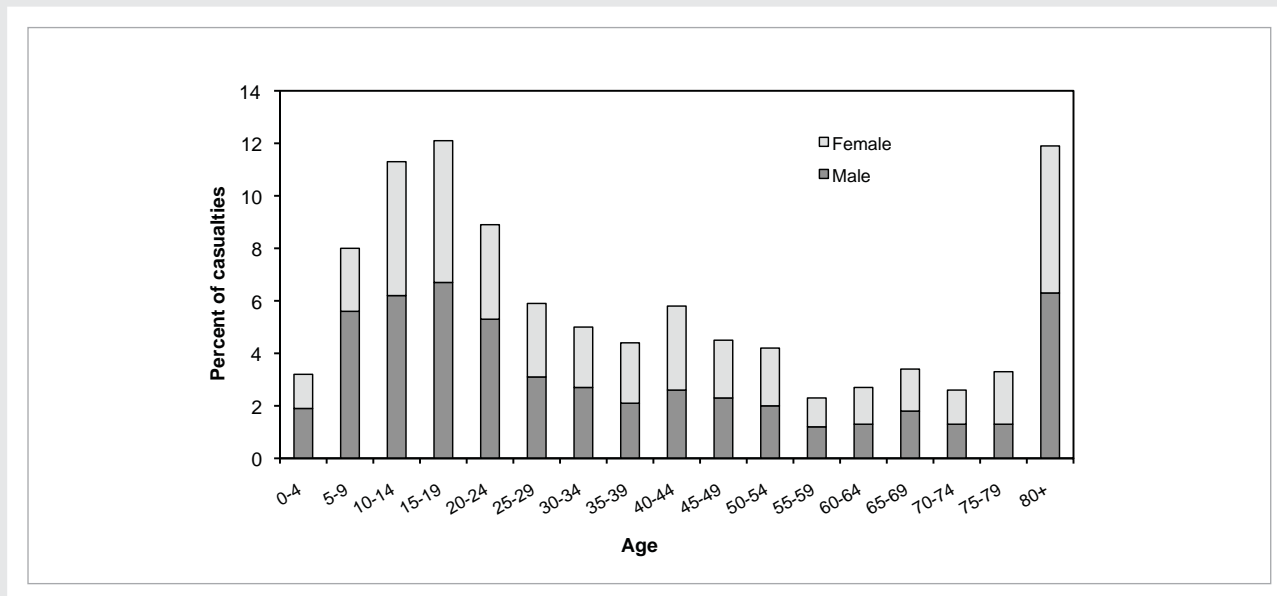


TABLE 43: INJURY CRASHES INVOLVING PEDESTRIANS BY ROAD FEATURE ON OPEN AND URBAN ROADS
YEAR ENDING 31 DECEMBER 2008

Road feature	URBAN ROADS				OPEN ROADS		UNKNOWN AREA	Total
	At pedestrian crossing		Not at pedestrian crossing		Day	Dark	and light	
	Day	Dark	Day	Dark				
INTERSECTIONS								
Controlled by:								
Traffic signals	3	-	98	37	-	-	-	138
Stop sign	3	1	16	2	-	-	-	22
Roundabout	1	-	13	4	-	-	-	18
Other Give Way sign	8	2	44	16	1	-	-	71
Points man or School Patrol	1	-	-	-	-	-	-	1
Uncontrolled	10	1	67	24	-	-	-	102
SUBTOTAL	26	4	238	83	1	-	-	352
NON-INTERSECTIONS								
Bridge	-	-	3	-	-	-	-	3
Railway Crossing	-	-	-	-	-	-	-	-
Motorway on-off ramp	-	-	-	-	-	-	-	-
Raised islands	-	-	33	17	2	1	-	53
Straight road	25	13	272	102	15	6	-	433
Easy curve	1	1	28	10	2	2	-	44
Moderate curve	1	-	6	4	3	1	-	15
Severe curve	-	-	3	2	2	-	-	7
Not stated	-	-	-	-	-	-	-	-
SUBTOTAL	27	14	345	135	24	10	-	555
TOTAL	53	18	583	218	25	10	-	907

NOTE: For urban/open road classification see Note 11.
Fatal crashes are not included in this table (see Table 44).

TABLE 44: FATAL CRASHES INVOLVING PEDESTRIANS BY ROAD FEATURE ON OPEN AND URBAN ROADS
YEAR ENDING 31 DECEMBER 2008

Road feature	URBAN ROADS				OPEN ROADS		UNKNOWN AREA	Total
	At pedestrian crossing		Not at pedestrian crossing		Day	Dark	and light	
	Day	Dark	Day	Dark				
INTERSECTIONS								
Controlled by:								
Traffic signals	-	-	2	-	-	-	-	2
Stop sign	-	-	1	1	-	-	-	2
Roundabout	-	-	-	-	-	-	-	-
Other Give Way sign	-	-	-	1	-	-	-	1
Points man or school patrol	-	-	-	-	-	-	-	-
Uncontrolled	-	-	1	1	-	-	-	2
SUBTOTAL	-	-	4	3	-	-	-	7
NON-INTERSECTIONS								
Bridge	-	-	-	-	-	-	-	-
Railway crossing	-	-	1	-	-	-	-	1
Motorway on-off ramp	-	-	-	-	-	-	-	-
Raised islands	-	-	1	-	-	-	-	1
Straight road	-	-	5	6	2	7	-	20
Easy curve	-	-	-	-	-	1	-	1
Moderate curve	-	-	-	-	1	-	-	1
Severe curve	-	-	-	-	-	-	-	-
Not stated	-	-	-	-	-	-	-	-
SUBTOTAL	-	-	7	6	3	8	-	24
TOTAL	-	-	11	9	3	8	-	31

NOTE: For urban/open road classification see Note 11.



TABLE 45: CRASHES INVOLVING PEDESTRIANS BY TIME OF DAY AND DAY OF WEEK
YEAR ENDED 31 DECEMBER 2008

Time of Day	Monday	Tuesday	Wednesday	Thursday	Friday	Saturday	Sunday	TOTALS
Midnight to 12.59am	- (-)	1 (-)	- (-)	1 (-)	5 (-)	5 (2)	5 (2)	17 (4)
1am to 1.59am	1 (-)	- (-)	2 (-)	1 (-)	2 (-)	3 (-)	3 (1)	12 (1)
2am to 2.59am	- (-)	- (-)	- (-)	1 (-)	- (1)	4 (-)	5 (-)	10 (1)
3am to 3.59am	- (-)	- (-)	- (-)	1 (-)	4 (-)	- (2)	3 (-)	8 (2)
4am to 4.59am	- (-)	- (-)	- (1)	- (-)	- (-)	1 (-)	4 (-)	5 (1)
5am to 5.59am	- (-)	1 (-)	1 (1)	1 (-)	1 (-)	- (-)	1 (-)	5 (1)
6am to 6.59am	1 (-)	3 (-)	1 (-)	2 (-)	4 (-)	1 (-)	1 (-)	13 (-)
7am to 7.59am	3 (-)	9 (1)	11 (-)	5 (-)	6 (-)	2 (-)	- (-)	36 (1)
8am to 8.59am	11 (1)	19 (-)	12 (1)	13 (1)	15 (-)	1 (-)	1 (-)	72 (3)
9am to 9.59am	8 (1)	5 (-)	4 (-)	5 (-)	8 (-)	5 (-)	2 (-)	37 (1)
10am to 10.59am	6 (-)	7 (-)	2 (-)	13 (-)	3 (-)	3 (-)	1 (-)	35 (-)
11am to 11.59am	7 (-)	7 (-)	12 (1)	7 (-)	7 (-)	10 (-)	5 (-)	55 (1)
noon to 12.59pm	5 (1)	5 (-)	6 (-)	4 (-)	11 (-)	11 (-)	3 (-)	45 (1)
1pm to 1.59pm	8 (-)	6 (-)	7 (-)	10 (-)	12 (-)	8 (-)	3 (-)	54 (-)
2pm to 2.59pm	6 (-)	8 (1)	8 (1)	10 (-)	11 (-)	5 (-)	3 (-)	51 (2)
3pm to 3.59pm	17 (1)	32 (-)	22 (-)	18 (-)	19 (1)	4 (-)	5 (-)	117 (2)
4pm to 4.59pm	14 (-)	11 (-)	13 (1)	16 (-)	14 (-)	5 (-)	3 (-)	76 (1)
5pm to 5.59pm	7 (-)	14 (-)	9 (1)	17 (-)	16 (-)	6 (-)	4 (1)	73 (2)
6pm to 6.59pm	3 (-)	15 (-)	3 (-)	13 (1)	8 (-)	8 (-)	3 (-)	53 (1)
7pm to 7.59pm	5 (-)	7 (-)	4 (-)	8 (-)	10 (1)	4 (-)	4 (-)	42 (1)
8pm to 8.59pm	2 (-)	3 (-)	6 (-)	3 (-)	8 (-)	4 (-)	3 (-)	29 (-)
9pm to 9.59pm	1 (-)	4 (2)	2 (-)	3 (-)	6 (1)	3 (-)	- (-)	19 (3)
10pm to 10.59pm	1 (-)	2 (-)	5 (-)	4 (1)	2 (-)	10 (-)	1 (-)	25 (1)
11pm to 11.59pm	1 (-)	1 (-)	1 (-)	1 (-)	4 (1)	7 (-)	- (-)	15 (1)
Unknown time	- (-)	2 (-)	- (-)	- (-)	- (-)	1 (-)	- (-)	3 (-)
TOTALS	107 (4)	162 (4)	131 (7)	157 (3)	176 (5)	111 (4)	63 (4)	907 (31)

NOTE: The figures in brackets are fatal crashes and are not included in the adjacent totals.

FIGURE 27: PERCENTAGE OF PEDESTRIAN CASUALTIES BY TIME OF DAY AND DAY OF WEEK

