

SECTION 8: DRIVERS INVOLVED IN REPORTED INJURY CRASHES



TABLE 49: DRIVERS INVOLVED IN FATAL CRASHES BY AGE AND VEHICLE TYPE
YEAR ENDING 31 DECEMBER 2008

Age group years	Car/van		Truck		Motorcycle		Total	
	Number	Percent male	Number	Percent male	Number	Percent male	Number	Percent male
0 to 14	1	100	-	-	-	-	1	100
15 to 19	55	73	2	100	7	100	65	77
20 to 24	58	76	3	67	8	63	70	73
25 to 29	34	77	2	100	7	100	44	82
30 to 34	23	61	6	100	5	100	35	74
35 to 39	24	71	6	100	4	100	35	80
40 to 44	27	63	11	91	4	100	43	74
45 to 49	25	76	3	100	4	100	33	79
50 to 54	17	59	9	100	6	100	33	79
55 to 59	20	60	7	100	3	100	30	73
60 to 64	19	79	3	100	-	-	24	83
65 to 69	16	63	1	100	3	100	20	70
70 and over	24	67	-	-	2	100	27	70
Unknown	13	46	2	100	-	-	16	50
TOTAL	356	69	55	96	53	94	476	75

NOTE: Columns do not always add to the total as there are other vehicle types such as buses not included separately in the table.

TABLE 50: DRIVERS INVOLVED IN INJURY CRASHES BY AGE AND VEHICLE TYPE
YEAR ENDING 31 DECEMBER 2008

Age group years	Car/van		Truck		Motorcycle		Total	
	Number	Percent male	Number	Percent male	Number	Percent male	Number	Percent male
0 to 14	25	72	1	-	19	68	48	69
15 to 19	2313	65	18	100	199	81	2536	66
20 to 24	2251	62	57	95	213	84	2531	64
25 to 29	1524	62	66	99	122	84	1715	65
30 to 34	1311	57	81	93	120	88	1516	61
35 to 39	1323	56	136	94	147	87	1620	62
40 to 44	1281	58	132	96	136	86	1577	64
45 to 49	1157	53	125	98	147	88	1459	61
50 to 54	979	56	86	99	102	85	1199	62
55 to 59	749	56	86	100	67	85	925	63
60 to 64	591	57	52	100	34	91	707	63
65 to 69	402	59	10	100	19	95	445	62
70 and over	896	58	9	100	12	100	926	59
Unknown	800	30	70	31	26	77	912	31
TOTAL	15602	58	929	92	1363	85	18116	62

NOTE: Columns do not always add to the total as there are other vehicle types such as buses not included separately in the table. Fatal crashes are not included in this table (see Table 49).

TABLE 51: CAR AND VAN DRIVERS INVOLVED IN FATAL CRASHES BY AGE GROUP
YEAR ENDING 31 DECEMBER

Year	15 to 19 years	20 to 24 years	25 to 29 years	30 to 39 years	40 to 59 years	60 years and over	Unknown and other	Total
1980	95	132	80	81	88	58	20	554
1981	121	122	78	90	84	68	40	603
1982	112	156	70	105	104	59	21	627
1983	108	156	71	100	109	59	29	632
1984	116	139	84	110	116	56	18	639
1985	119	143	113	128	111	70	29	713
1986	126	154	100	139	127	60	35	741
1987	138	137	118	144	135	65	25	762
1988	110	133	105	119	131	68	19	685
1989	101	119	105	143	146	80	26	720
1990	99	145	105	128	122	59	36	694
1991	94	140	89	119	115	67	15	639
1992	76	119	85	122	120	74	28	624
1993	78	106	70	108	100	72	36	570
1994	64	110	81	117	110	54	21	557
1995	72	100	70	125	130	59	16	572
1996	80	82	70	94	114	60	21	521
1997	69	71	59	104	138	82	29	552
1998	70	84	61	115	115	74	28	547
1999	70	85	69	95	115	88	19	541
2000	56	64	42	94	128	87	21	492
2001	60	68	57	72	115	77	23	472
2002	44	55	54	79	108	69	18	427
2003	71	71	63	106	120	68	14	513
2004	76	62	38	78	114	70	14	452
2005	73	59	38	66	105	56	9	406
2006	59	57	31	74	110	76	7	413
2007	61	62	33	84	111	74	19	444
2008	55	58	34	47	89	59	14	356

TABLE 52: CAR AND VAN DRIVERS INVOLVED IN INJURY CRASHES BY AGE GROUP
YEAR ENDING 31 DECEMBER

Year	15 to 19 years	20 to 24 years	25 to 29 years	30 to 39 years	40 to 59 years	60 years and over	Unknown and other	Total
1980	2474	2306	1343	1953	2145	998	335	11554
1981	2266	2378	1401	1890	2075	1032	417	11459
1982	2376	2619	1443	1999	2237	1068	374	12116
1983	2431	2616	1533	2145	2307	1292	373	12697
1984	2578	2908	1708	2423	2583	1326	413	13939
1985	2750	3201	1966	2677	2906	1382	440	15322
1986	2926	3113	1986	2748	2881	1431	429	15514
1987	2840	2938	2145	2785	2824	1415	431	15378
1988	2284	2766	2126	2826	2963	1452	442	14859
1989	2202	2777	2037	2725	3032	1456	465	14694
1990	2445	2947	2262	3041	3194	1611	449	15949
1991	2306	2756	2109	3184	3244	1582	350	15531
1992	2127	2813	1968	2995	3174	1502	329	14908
1993	2034	2525	1880	2825	3060	1485	345	14154
1994	2302	2713	1995	3136	3259	1607	412	15424
1995	2380	2930	1988	3299	3480	1565	362	16004
1996	2008	2298	1691	2745	3113	1427	380	13662
1997	1878	1896	1541	2539	2787	1212	400	12253
1998	1729	1743	1423	2309	2645	1168	442	11459
1999	1624	1578	1336	2347	2714	1169	454	11222
2000	1417	1496	1166	2089	2507	1072	408	10155
2001	1669	1675	1237	2366	2987	1292	441	11667
2002	2133	1949	1432	2660	3481	1527	691	13873
2003	2146	2163	1348	2802	3743	1623	704	14529
2004	2168	2026	1382	2710	3639	1617	642	14184
2005	2285	2185	1431	2693	3952	1607	754	14907
2006	2397	2271	1501	2678	4041	1770	609	15267
2007	2542	2386	1610	2910	4328	1855	830	16461
2008	2313	2251	1524	2634	4166	1889	825	15602

NOTE: Fatal crashes are not included in this table. (see Table 51).



FIGURE 30: PERCENTAGE OF CRASH INVOLVED CAR DRIVERS BY AGE AND SEX FOR FATAL CRASHES

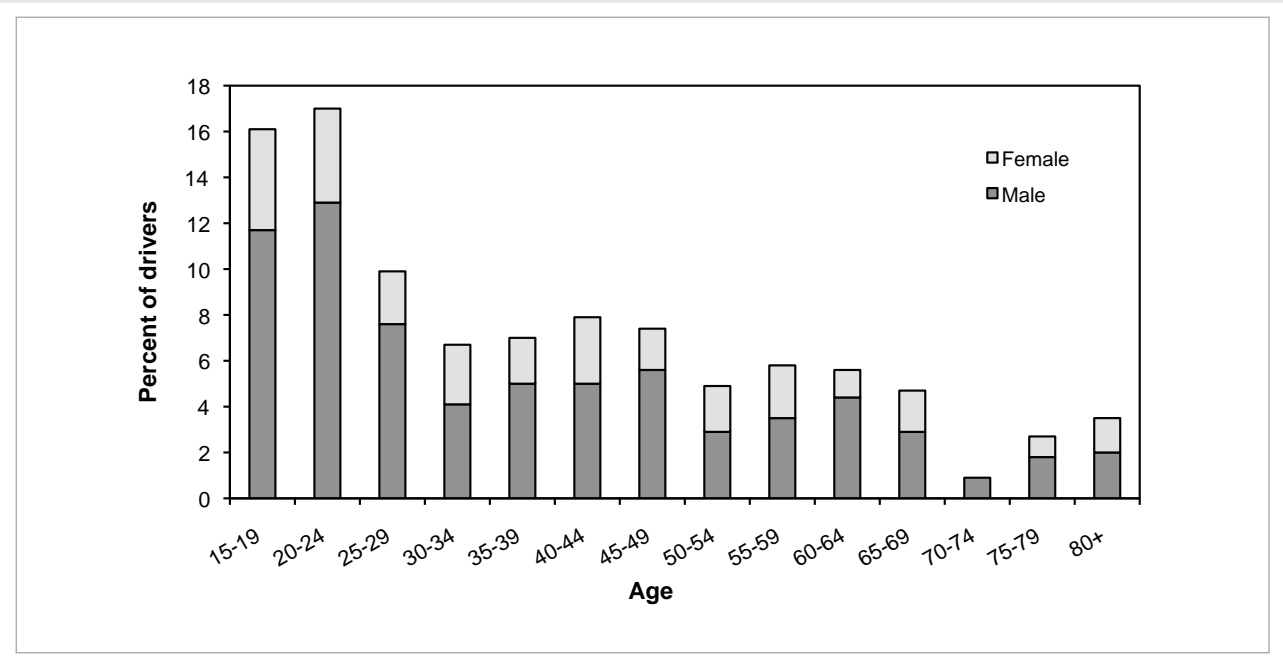


FIGURE 31: PERCENTAGE OF CRASH INVOLVED CAR DRIVERS BY AGE AND SEX FOR INJURY CRASHES

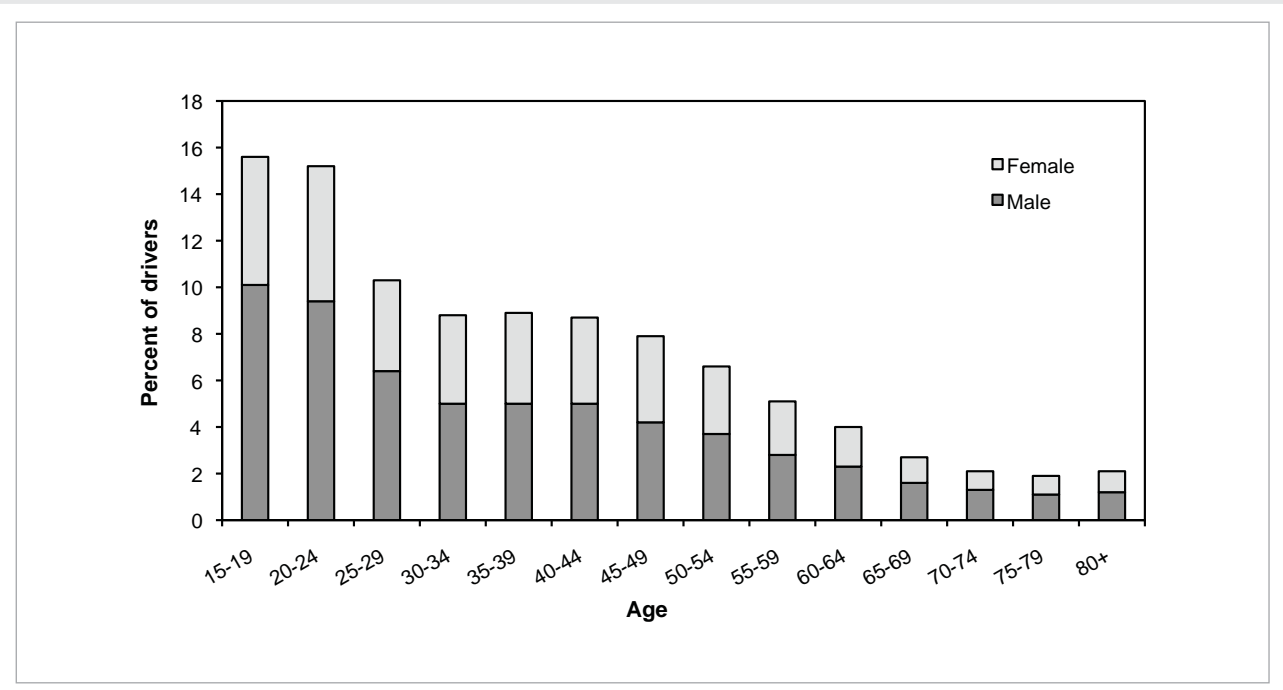


FIGURE 32: PERCENTAGE OF CRASH INVOLVED CAR DRIVERS IN SELECTED AGE GROUPS - FATAL CRASHES

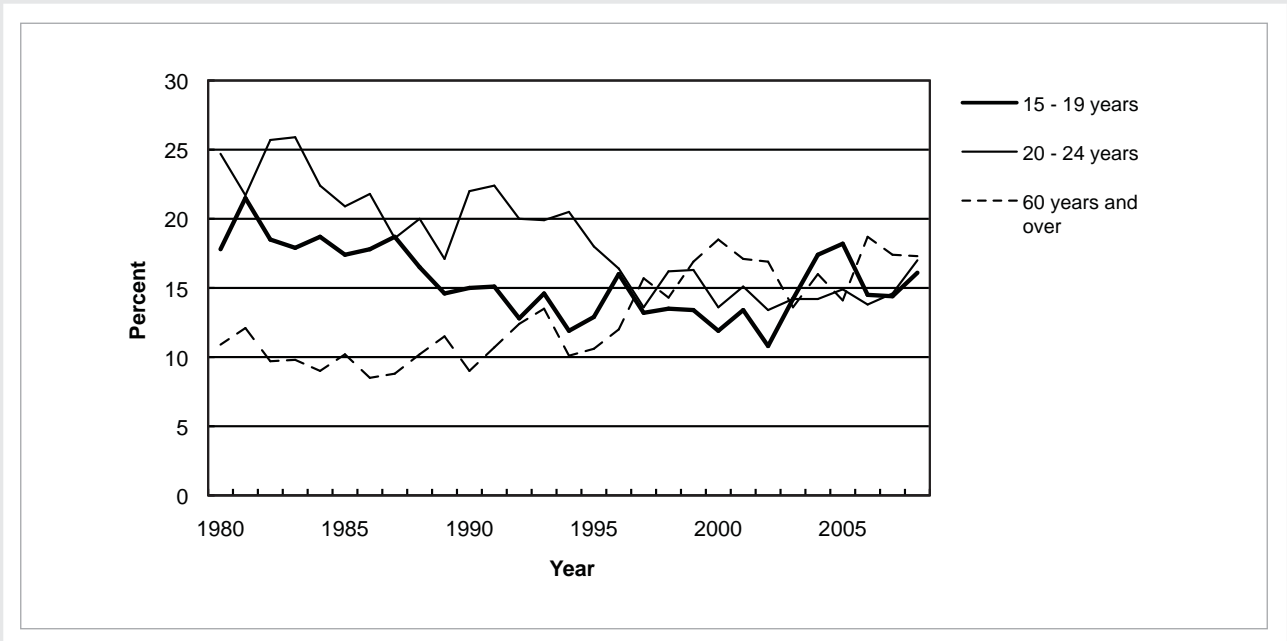


FIGURE 33: PERCENTAGE OF CRASH INVOLVED CAR DRIVERS IN SELECTED AGE GROUPS - INJURY CRASHES

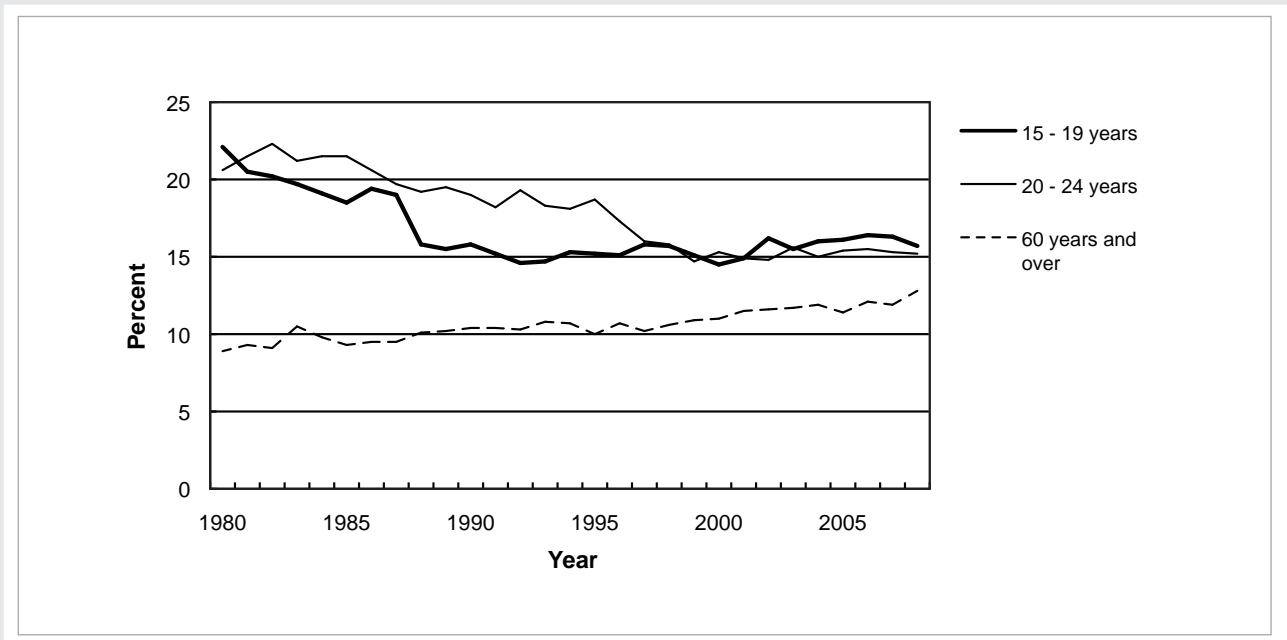


TABLE 53: CAR AND VAN DRIVERS INVOLVED IN FATAL CRASHES BY AGE GROUP AND SEX
YEAR ENDING 31 DECEMBER

Year	15 to 19 years	Percent male	30 to 59 years	Percent male	60 years and over	Percent male	Total	Percent Male
1980	307	83	169	80	58	74	554	81
1981	321	82	174	75	68	72	603	77
1982	338	84	209	83	59	75	627	82
1983	335	84	209	78	59	71	632	80
1984	339	81	226	74	56	82	639	78
1985	375	78	239	73	70	81	713	76
1986	380	80	266	78	60	78	741	78
1987	393	77	279	74	65	63	762	74
1988	348	81	250	75	68	66	685	77
1989	325	80	289	74	80	70	720	76
1990	349	77	250	76	59	73	694	76
1991	323	73	234	76	67	73	639	74
1992	280	78	242	74	74	66	624	74
1993	254	82	208	76	72	67	570	77
1994	255	77	227	72	54	74	557	75
1995	242	75	255	69	59	68	572	71
1996	232	77	208	71	60	73	521	74
1997	199	67	242	75	82	76	552	72
1998	215	76	230	67	74	69	547	71
1999	224	71	210	74	88	67	541	71
2000	162	72	222	72	87	66	492	70
2001	185	82	187	70	77	61	472	74
2002	153	71	187	65	69	71	427	67
2003	205	76	226	70	68	72	513	72
2004	176	73	192	68	70	71	452	70
2005	170	80	171	70	56	79	406	76
2006	147	65	184	69	76	71	413	67
2007	156	70	195	71	74	66	444	69
2008	147	75	136	65	59	70	356	69

TABLE 54 CAR AND VAN DRIVERS INVOLVED IN INJURY CRASHES BY AGE GROUP AND SEX
YEAR ENDING 31 DECEMBER

Year	15 to 19 years	Percent male	30 to 59 years	Percent male	60 years and over	Percent male	Total	Percent Male
1980	6123	76	4098	69	998	69	11554	72
1981	6045	76	3965	70	1032	70	11459	72
1982	6438	74	4236	66	1068	69	12116	70
1983	6580	73	4452	68	1292	69	12697	69
1984	7194	72	5006	68	1326	68	13939	69
1985	7917	73	5583	66	1382	67	15322	69
1986	8025	73	5629	66	1431	69	15514	69
1987	7923	70	5609	64	1415	65	15378	66
1988	7176	69	5789	64	1452	64	14859	66
1989	7016	70	5757	63	1456	66	14694	66
1990	7654	69	6235	62	1611	65	15949	65
1991	7171	68	6428	62	1582	65	15531	65
1992	6908	67	6169	62	1502	65	14908	64
1993	6439	65	5885	61	1485	61	14154	62
1994	7010	65	6395	60	1607	65	15424	62
1995	7298	66	6779	61	1565	63	16004	63
1996	5997	65	5858	60	1427	63	13662	62
1997	5315	65	5326	60	1212	62	12253	61
1998	4895	65	4954	59	1168	61	11459	60
1999	4538	65	5061	58	1169	60	11222	60
2000	4079	65	4596	59	1072	62	10155	61
2001	4581	65	5353	57	1292	58	11667	59
2002	5514	64	6141	58	1527	60	13873	59
2003	5657	64	6545	57	1623	59	14529	59
2004	5576	64	6349	58	1617	60	14184	59
2005	5901	64	6645	57	1607	61	14907	59
2006	6169	63	6719	59	1770	58	15267	59
2007	6538	62	7238	57	1855	61	16461	58
2008	6088	63	6800	56	1889	58	15602	58

NOTE: Fatal crashes are not included in this table (see table 53).

FIGURE 34: MALE DRIVERS AS A PERCENTAGE OF ALL CRASH INVOLVED CAR DRIVERS - ALL AGES

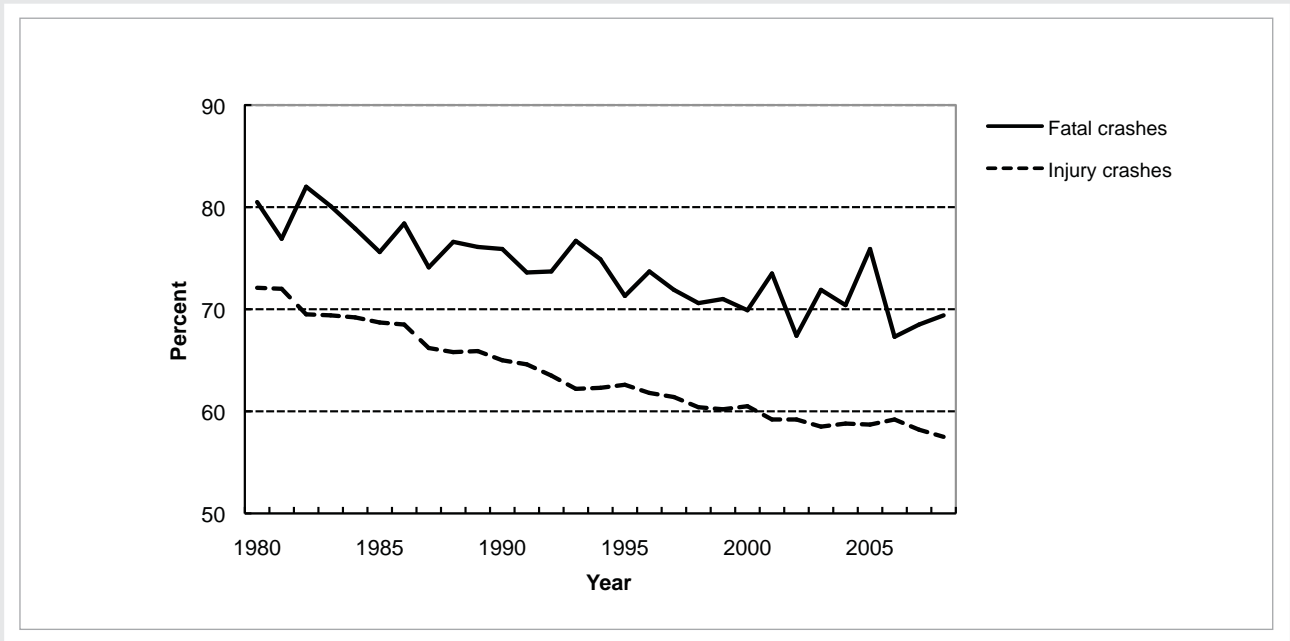


FIGURE 35: MALE DRIVERS AS A PERCENTAGE OF ALL CRASH INVOLVED CAR DRIVERS - YOUNG DRIVERS 15-29 YEARS

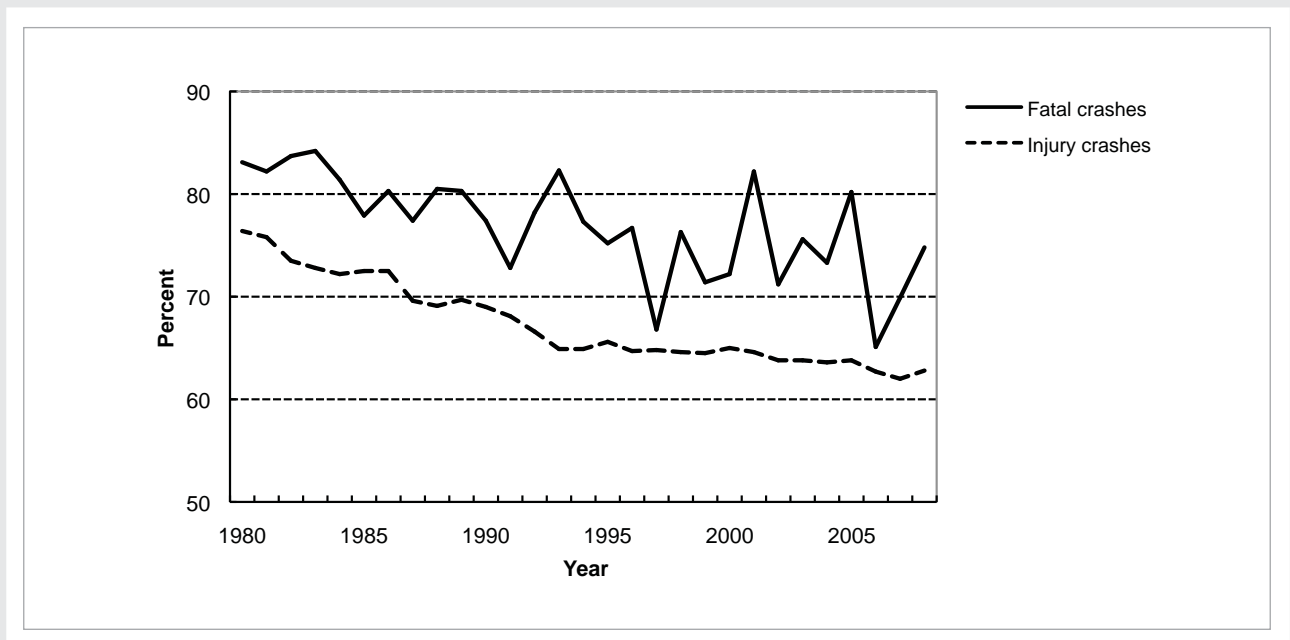


TABLE 55: PERCENTAGE OF CRASH INVOLVED DRIVERS WITH ALCOHOL/DRUGS RECORDED AS A FACTOR CONTRIBUTING TO THE CRASH YEAR ENDING 31 DECEMBER 2008

Age group years	Fatal Crashes					Injury Crashes			
	Car/van	Truck	Motorcycle	Total		Car/van	Truck	Motorcycle	Total
15 to 19	27	-	-	25		16	-	7	15
20 to 24	43	-	-	43		14	4	8	13
25 to 29	44	-	-	41		12	6	10	12
30 to 39	40	-	-	33		10	2	8	9
40 to 59	17	3	-	12		6	2	6	6
60 and over	9	-	-	7		2	1	2	2
Total	28	2	25	24		10	2	7	9

NOTE: Where the number of drivers is less than 20 the percentage is not calculated.

TABLE 56: PERCENTAGE OF CRASH INVOLVED DRIVERS WITH TOO FAST FOR CONDITIONS RECORDED AS A FACTOR CONTRIBUTING TO THE CRASH YEAR ENDING 31 DECEMBER 2008

Age group years	Fatal Crashes					Injury Crashes			
	Car/van	Truck	Motorcycle	Total		Car/van	Truck	Motorcycle	Total
15 to 19	42	-	-	40		22	-	9	21
20 to 24	41	-	-	36		15	14	10	14
25 to 29	32	-	-	34		12	9	9	12
30 to 39	26	-	-	24		8	5	13	8
40 to 59	15	3	-	14		4	7	8	5
60 and over	3	-	-	4		3	3	6	3
Total	25	6	32	23		10	7	10	10

NOTE: Where the number of drivers is less than 20 the percentage is not calculated.

TABLE 57: PERCENTAGE OF CRASH INVOLVED DRIVERS WITH FAILED TO GIVE WAY OR STOP RECORDED AS A FACTOR CONTRIBUTING TO THE CRASH YEAR ENDING 31 DECEMBER 2008

Age group years	Fatal Crashes					Injury Crashes			
	Car/van	Truck	Motorcycle	Total		Car/van	Truck	Motorcycle	Total
15 to 19	2	-	-	5		13	-	5	13
20 to 24	2	-	-	3		16	7	4	14
25 to 29	6	-	-	5		15	6	2	13
30 to 39	4	-	-	3		15	7	4	13
40 to 59	11	10	-	9		16	6	1	14
60 and over	19	-	-	17		27	18	9	26
Total	8	6	4	7		17	8	3	15

NOTE: Where the number of drivers is less than 20 the percentage is not calculated.