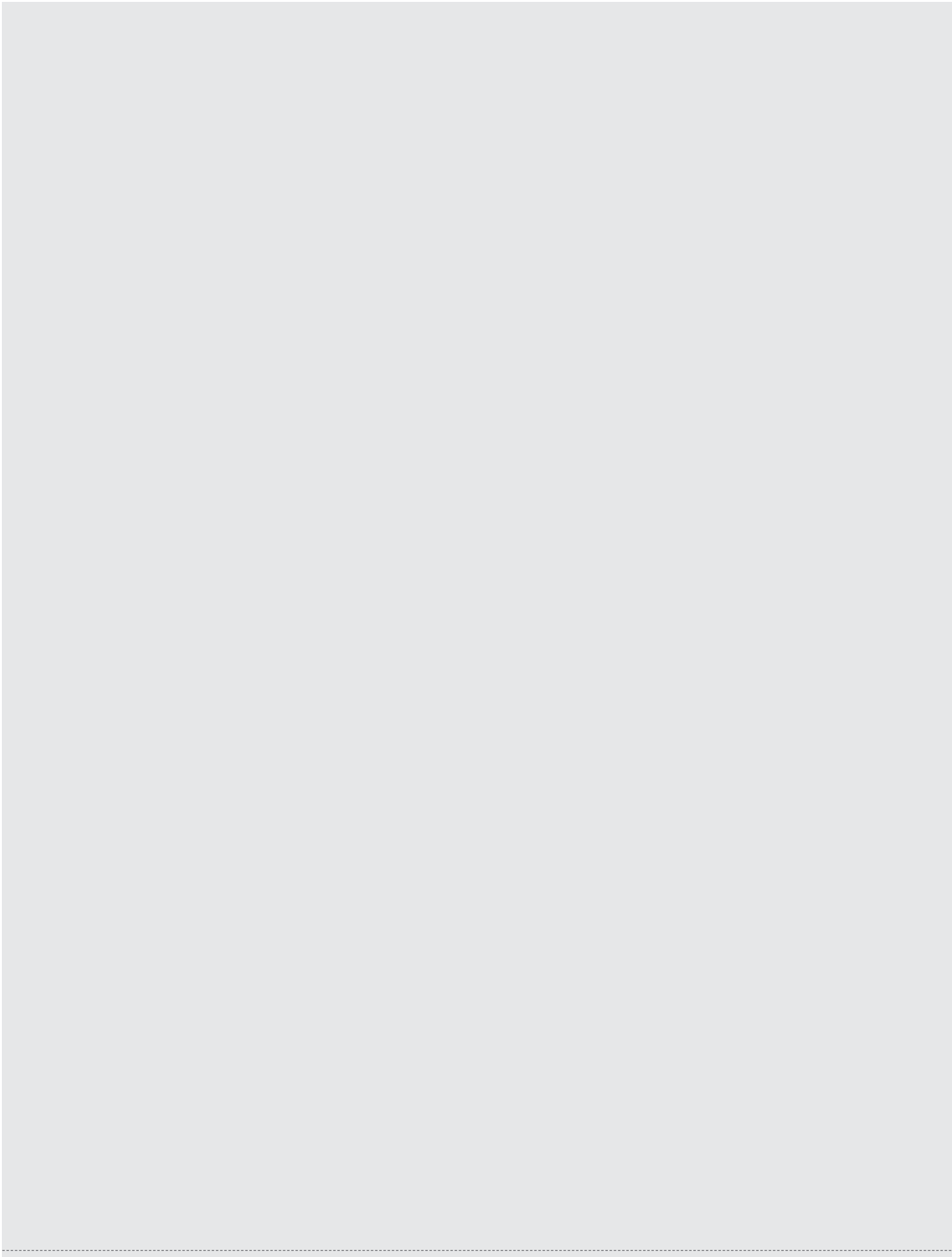


# NATIONAL HEALTH STATISTICS FOR ROAD USERS





## CONTENTS

### TABLES

Table 1	Age and type of road user hospitalised	110
Table 2	Number of days stay by age and type of road user hospitalised	111
Table 3	Average number of days stay by age and type of road user hospitalised	112

### FIGURES

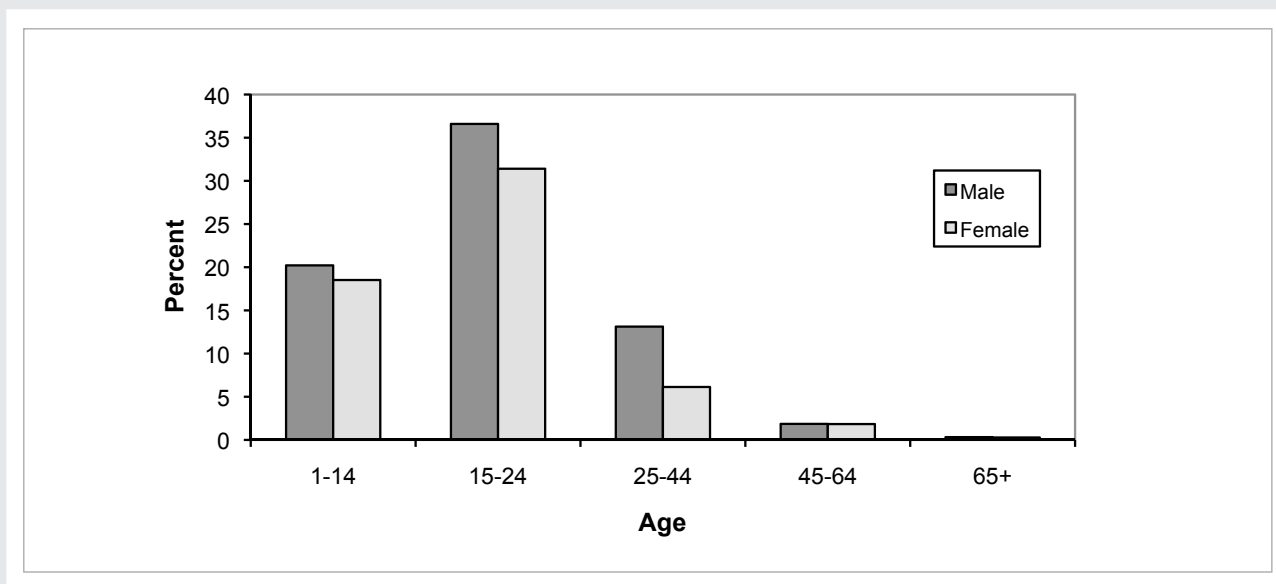
Figure 1	Deaths from motor vehicle crashes as a percentage of all deaths for selected age group (2007)	108
Figure 2	Hospital discharges from motor vehicle crashes (by length of stay in hospital)	108
Figure 3	Hospital discharges from motor vehicle crashes (readmissions not included)	109
Figure 4	Total days stay in hospital resulting from motor vehicle crashes	109
Figure 5	Number of hospitalisations from road crashes by age and sex	110
Figure 6	Total days stay in hospital from road crashes by age and sex	111
Figure 7	Hospitalisations and days stay by road user type	112
Figure 8	Number of pedal cyclists hospitalised from non-motor vehicle crashes	113
Figure 9	Days stay in hospital for pedal cyclists injured in non-motor vehicle crashes	113

### NOTES

1. The material presented in this section is derived from data provided by the New Zealand Health Information Service, Ministry of Health.
2. The data includes those who, as a result of a motor vehicle crash, were injured seriously enough to be admitted to hospital. (Figures 8 and 9 show data for cyclists who were injured in non-motor vehicle crashes. These casualties are not included in the Ministry of Transport's data base which records primarily motor vehicle crashes.) The data presented includes only those discharged during the 2010 calendar year.
3. Casualties who are readmitted for further treatment are included only once in the casualty count, but their total stay in hospital is recorded.



**FIGURE 1: DEATHS FROM MOTOR VEHICLE CRASHES AS A PERCENTAGE OF ALL DEATHS FOR SELECTED AGE GROUP (2007)**



**FIGURE 2: HOSPITAL DISCHARGES FROM MOTOR VEHICLE CRASHES (BY LENGTH OF STAY IN HOSPITAL)**

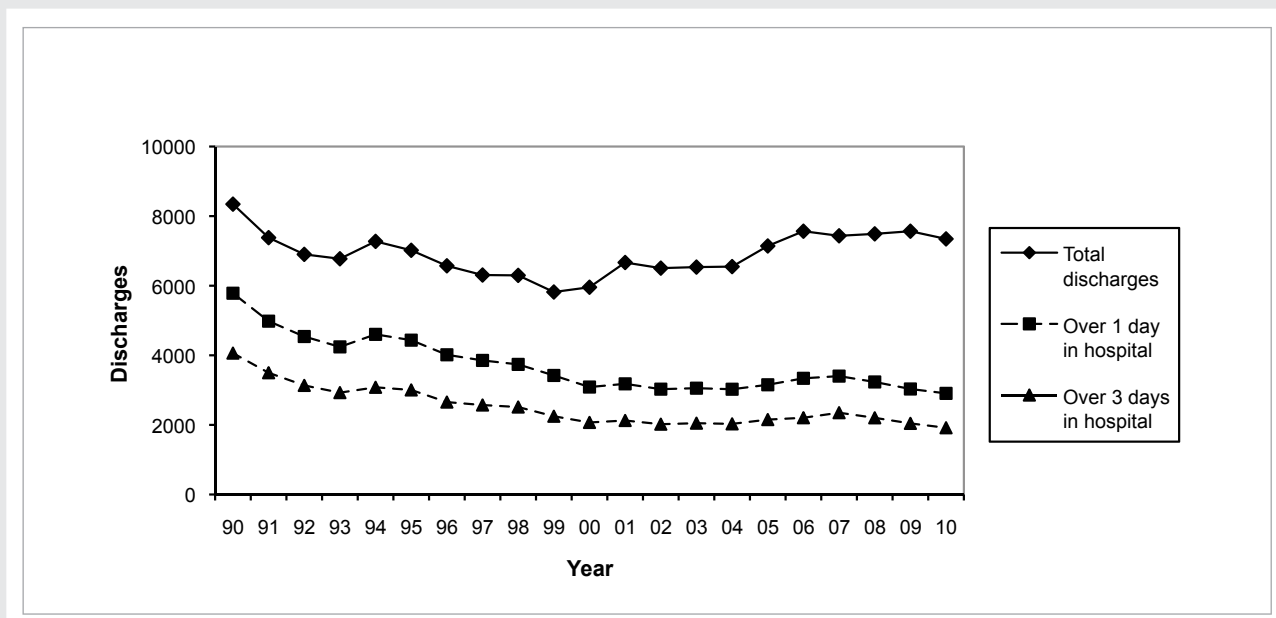


FIGURE 3: HOSPITAL DISCHARGES FROM MOTOR VEHICLE CRASHES (READMISSIONS NOT INCLUDED)

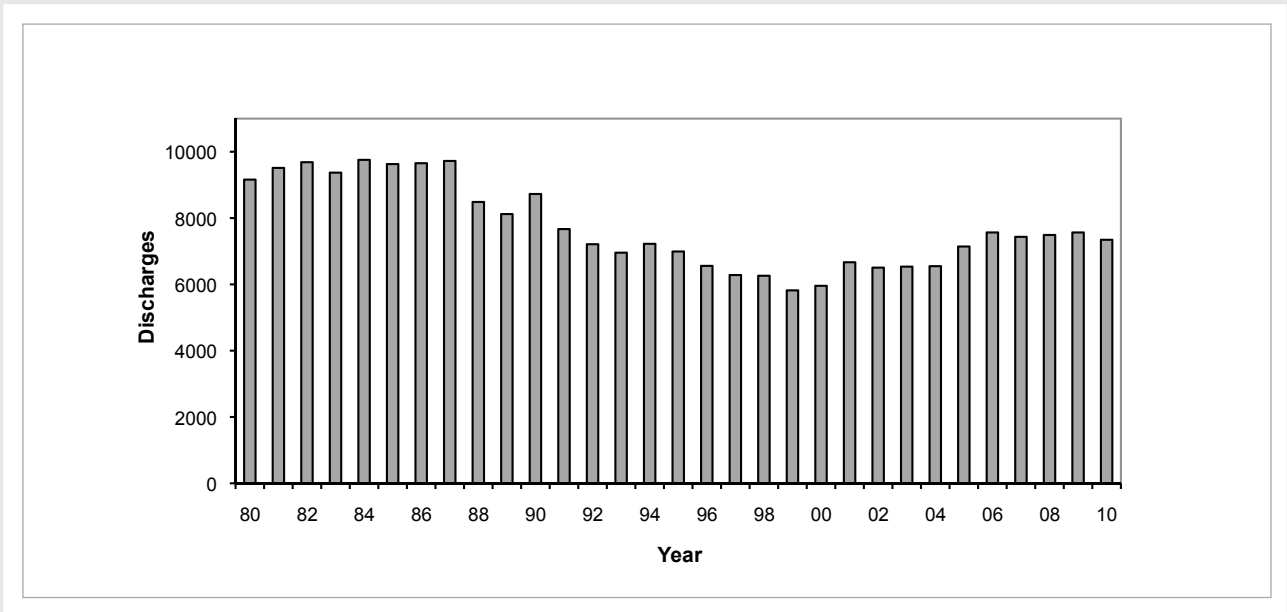
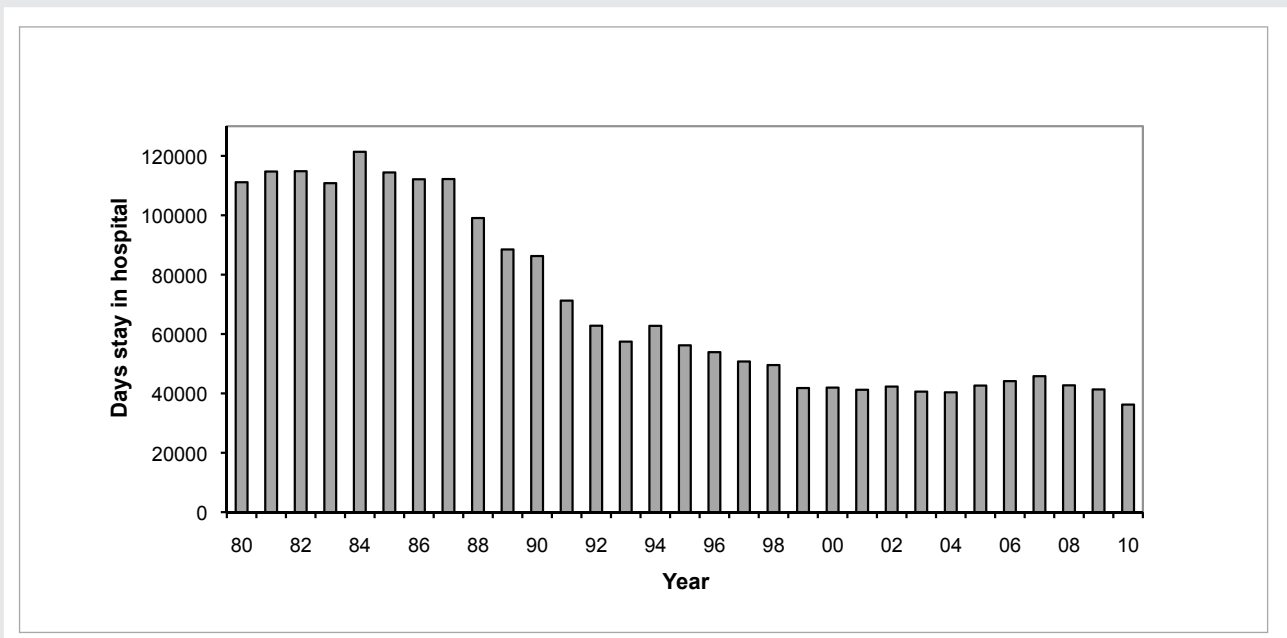


FIGURE 4: TOTAL DAYS STAY IN HOSPITAL RESULTING FROM MOTOR VEHICLE CRASHES



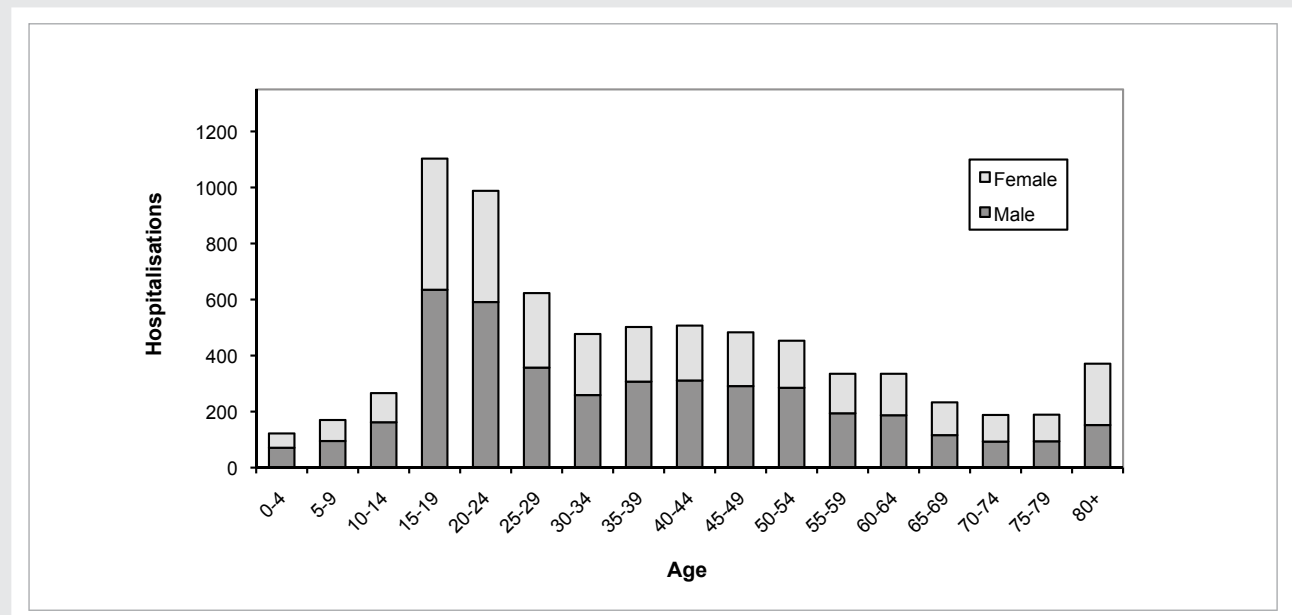
**TABLE 1: AGE AND TYPES OF ROAD USERS HOSPITALISED YEAR ENDED 31 DECEMBER 2010**

Age group years	Drivers	Passengers	Motorcycle drivers	Motorcycle pillions	Pedal cyclists	Pedestrians	Other road users (1)	TOTAL casualties
Under 5	1	62	-	-	2	37	20	122
5 to 9	-	76	11	2	9	55	17	170
10 to 14	3	94	37	1	34	75	22	266
15 to 19	402	370	121	10	25	87	88	1103
20 to 24	379	235	155	11	24	85	99	988
25 to 29	262	131	120	6	18	37	49	623
30 to 34	201	86	81	4	28	34	43	477
35 to 39	205	71	112	9	32	27	46	502
40 to 44	191	74	118	9	34	32	49	507
45 to 49	186	69	118	17	26	29	38	483
50 to 54	160	46	145	4	30	24	44	453
55 to 59	136	47	74	5	17	18	38	335
60 to 64	149	44	46	3	16	31	46	335
65 to 69	99	51	17	-	7	21	38	233
70 to 74	78	41	15	2	3	23	26	188
75 to 79	92	36	3	1	2	22	33	189
80 and over	147	59	3	1	2	42	117	371
<b>TOTALS</b>	<b>2691</b>	<b>1592</b>	<b>1176</b>	<b>85</b>	<b>309</b>	<b>679</b>	<b>813</b>	<b>7345</b>

NOTE: (1) Includes unknown.

SOURCE: NZHIS Ministry of Health.

**FIGURE 5: NUMBER OF HOSPITALISATIONS FROM ROAD CRASHES BY AGE AND SEX**



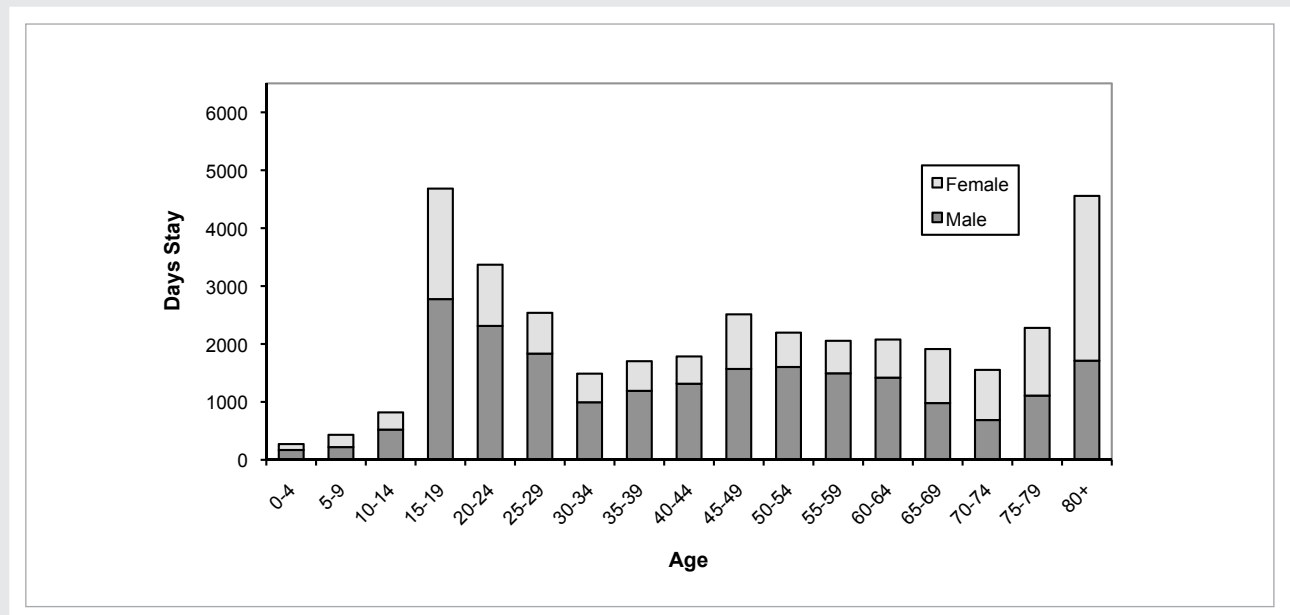
**TABLE 2: NUMBER OF DAYS STAY BY AGE AND TYPE OF ROAD USER HOSPITALISED**  
YEAR ENDED 31 DECEMBER 2010

Age group years	Drivers	Passengers	Motorcycle drivers	Motorcycle pillions	Pedal cyclists	Pedestrians	Other road users (1)	TOTAL casualties
Under 5	1	177	-	-	2	59	33	272
5 to 9	-	210	11	1	18	175	17	432
10 to 14	1	336	139	2	74	197	70	819
15 to 19	1203	2427	370	50	132	310	191	4683
20 to 24	1123	1007	431	48	67	279	414	3369
25 to 29	1100	573	542	7	54	107	155	2538
30 to 34	524	225	323	32	89	193	102	1488
35 to 39	552	230	487	82	143	82	127	1703
40 to 44	415	267	730	45	45	166	117	1785
45 to 49	538	267	1122	141	118	140	186	2512
50 to 54	412	246	1044	13	104	74	303	2196
55 to 59	667	214	692	20	100	153	209	2055
60 to 64	1001	145	475	19	73	192	172	2077
65 to 69	595	502	109	-	4	436	267	1913
70 to 74	536	253	157	1	6	194	406	1553
75 to 79	610	291	4	9	5	410	949	2278
80 and over	1201	650	40	0	2	948	1716	4557
<b>TOTALS</b>	<b>10479</b>	<b>8020</b>	<b>6676</b>	<b>470</b>	<b>1036</b>	<b>4115</b>	<b>5434</b>	<b>36230</b>

NOTE: (1) Includes unknown.

SOURCE: NZHIS Ministry of Health.

**FIGURE 6: TOTAL DAYS STAY IN HOSPITAL FROM ROAD CRASHES BY AGE AND SEX**



**TABLE 3: AVERAGE NUMBER OF DAYS STAY BY AGE AND TYPE OF ROAD USER HOSPITALISED**  
YEAR ENDED 31 DECEMBER 2010

Age group years	Drivers	Passengers	Motorcycle drivers	Motorcycle pillions	Pedal cyclists	Pedestrians	Other road users (1)	TOTAL casualties
Under 5	-	3	-	-	-	2	-	2
5 to 9	-	3	-	-	-	3	-	3
10 to 14	-	4	4	-	2	3	3	3
15 to 19	3	7	3	-	5	4	2	4
20 to 24	3	4	3	-	3	3	4	3
25 to 29	4	4	5	-	-	3	3	4
30 to 34	3	3	4	-	3	6	2	3
35 to 39	3	3	4	-	4	3	3	3
40 to 44	2	4	6	-	1	5	2	4
45 to 49	3	4	10	-	5	5	5	5
50 to 54	3	5	7	-	3	3	7	5
55 to 59	5	5	9	-	-	-	6	6
60 to 64	7	3	10	-	-	6	4	6
65 to 69	6	10	-	-	-	21	7	8
70 to 74	7	6	-	-	-	8	16	8
75 to 79	7	8	-	-	-	19	29	12
80 and over	8	11	-	-	-	23	15	12
<b>TOTALS</b>	<b>4</b>	<b>5</b>	<b>6</b>	<b>6</b>	<b>3</b>	<b>6</b>	<b>7</b>	<b>5</b>

NOTE: (1) Includes unknown.  
Average days stay are not calculated when there are fewer than 20 individuals.

**FIGURE 7: HOSPITALISATIONS AND DAYS STAY BY ROAD USER TYPE**

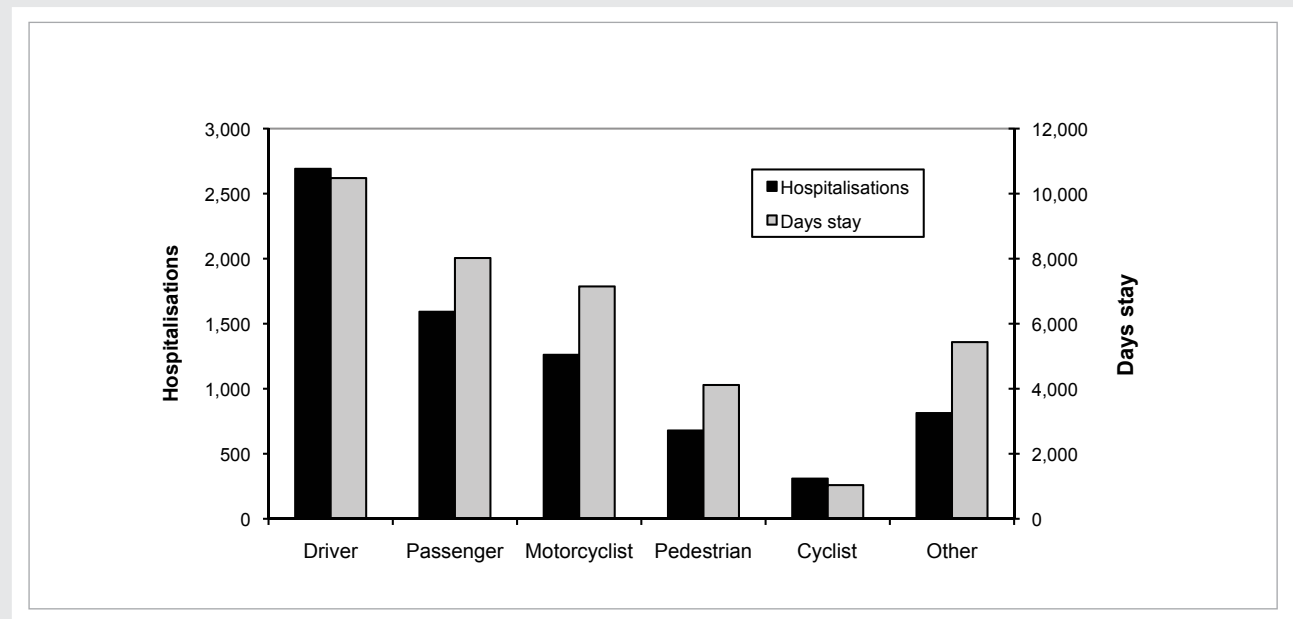


FIGURE 8: NUMBER OF PEDAL CYCLISTS HOSPITALISED FROM NON-MOTOR VEHICLE CRASHES

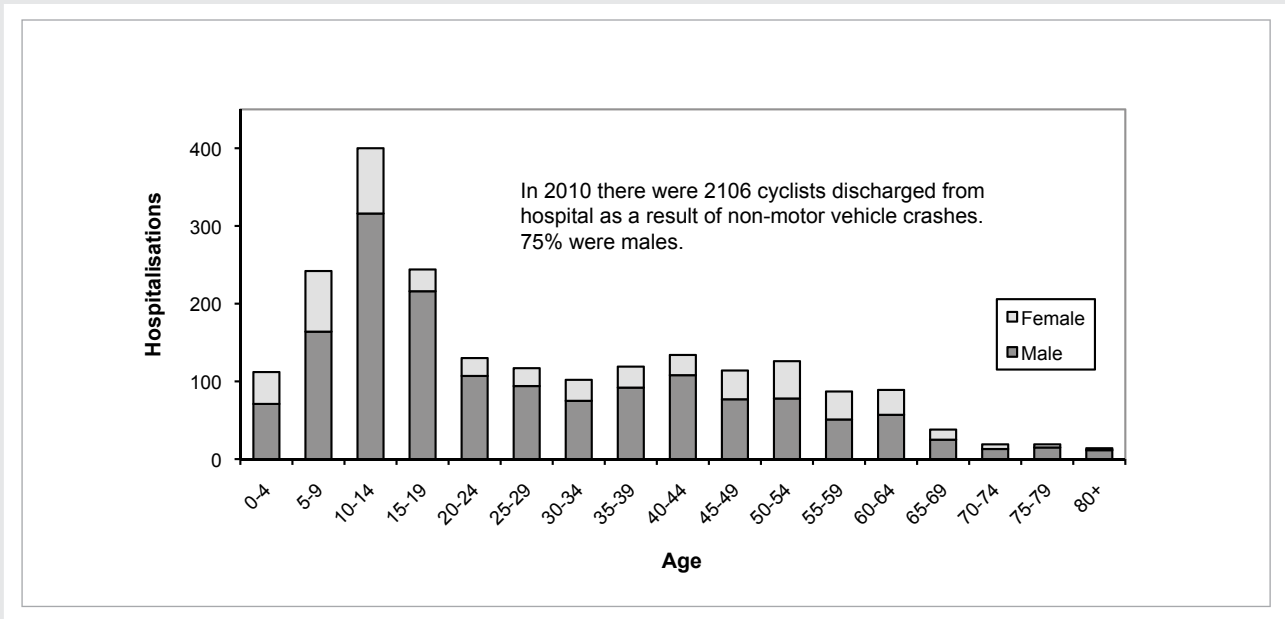


FIGURE 9: DAYS STAY IN HOSPITAL FOR PEDAL CYCLISTS INJURED IN NON-MOTOR VEHICLE CRASHES

