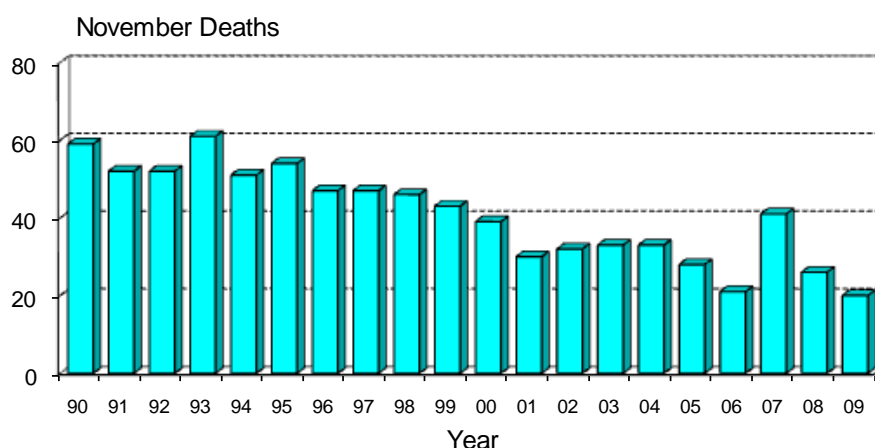


Monthly Road Crash Stats Update

November Road Deaths (2009)

The data presented here are provisional. Crash data as at – 10th December 2009

- Twenty people died on New Zealand roads in November. This is six fewer than the number of deaths for November 2008 and is 10 fewer than the average November toll for the last five years. This was the lowest November road toll since 1965. (Monthly records are not available prior to 1965).



- To the end of November this year 347 people have died on New Zealand roads. This is 31 more than at the same time last year.
- In the 12 months to the end of November 2009, 396 people were killed on our roads. This is 34 more than the number of deaths in the 12 months to the end of November 2008.
- During November, 13 of the deaths were car or van drivers, four were car or van passengers, two were motorcyclists and one was a pedestrian.
- Twelve of the 20 killed were in open road crashes. Ten were in single vehicle crashes in which a driver lost control of the vehicle or ran off the road and five were in head-on crashes.
- Of the 17 vehicle occupants killed, six were not restrained at the time of the crash.

Deaths and Police reported injuries by age, sex and type of road user

Deaths are for the 12 months to the end of November 2009. Reported injuries are for the 12 months to the end of May 2009.

Note: Preliminary fatal crash reports are submitted within 24 hours of a crash related death. Full injury crash reports are submitted only after the crash investigations are completed, so there is a lag in the reporting of injury crashes.

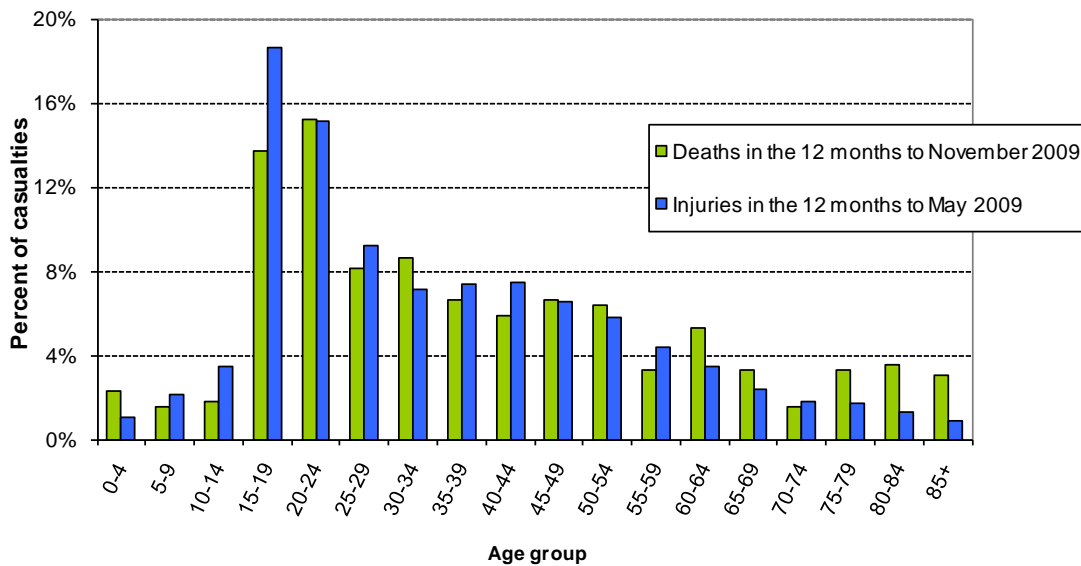
Road user type by sex

Sex	Drivers		Passengers		Motorcyclists		Pedestrians		Cyclists		Other		Total	
	Killed	Injured	Killed	Injured	Killed	Injured	Killed	Injured	Killed	Injured	Killed	Injured	Killed	Injured
Male	134	4651	56	1452	46	1155	24	464	7	615	3	32	270	8369
Female	66	3730	46	1825	4	241	9	438	1	223	0	16	126	6473
Total	200	8381	102	3277	50	1396	33	902	8	838	3	48	396	14842
% male	67%	55%	55%	44%	92%	83%	73%	51%	88%	73%	100%	67%	68%	56%

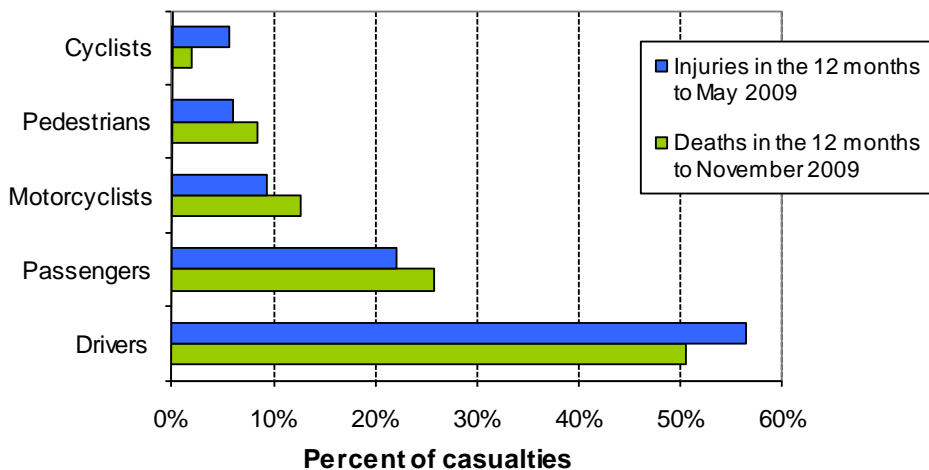
Road user type by age group

Age group	Drivers		Passengers		Motorcyclists		Pedestrians		Cyclists		Other		Total	
	Killed	Injured	Killed	Injured	Killed	Injured	Killed	Injured	Killed	Injured	Killed	Injured	Killed	Injured
Under-15	0	13	17	563	0	32	3	207	1	134	1	8	22	957
15-24	51	2683	47	1342	6	427	9	190	1	173	0	10	114	4825
25-34	34	1529	11	356	17	245	2	92	2	117	0	3	66	2342
35-44	24	1375	6	221	14	288	4	84	1	153	0	4	49	2125
45-54	35	1149	2	169	10	260	3	72	1	117	0	1	51	1768
55-64	16	756	10	160	2	83	5	51	1	72	0	4	34	1126
65-74	15	387	2	95	0	28	1	57	1	20	0	5	19	592
75+	23	385	7	85	1	10	6	63	0	7	2	10	39	560
Unknown	2	104	0	286	0	23	0	86	0	45	0	3	2	547
Total	200	8381	102	3277	50	1396	33	902	8	838	3	48	396	14842

Deaths and reported injuries by age group

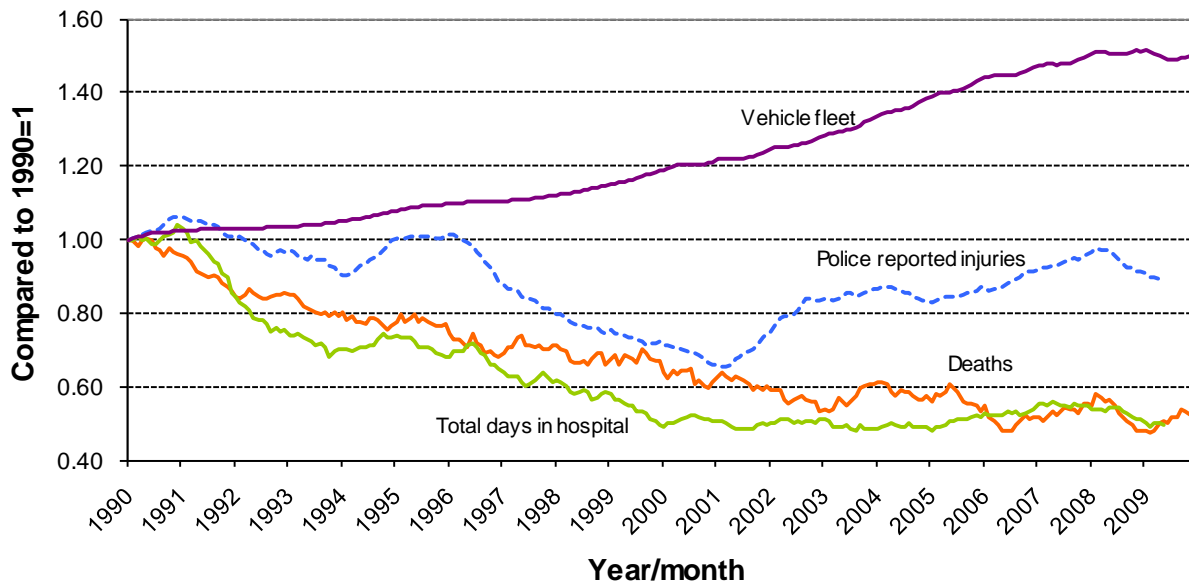


Types of road users killed and injured



Trends

Road crash casualties and vehicle fleet compared to 1990



Since 1990 the number of vehicles on the road has increased by 50% while Police reported injuries have dropped by 11%, road deaths have dropped by 48% and the number of days spent in hospital as a result of road crashes has dropped by 51%.

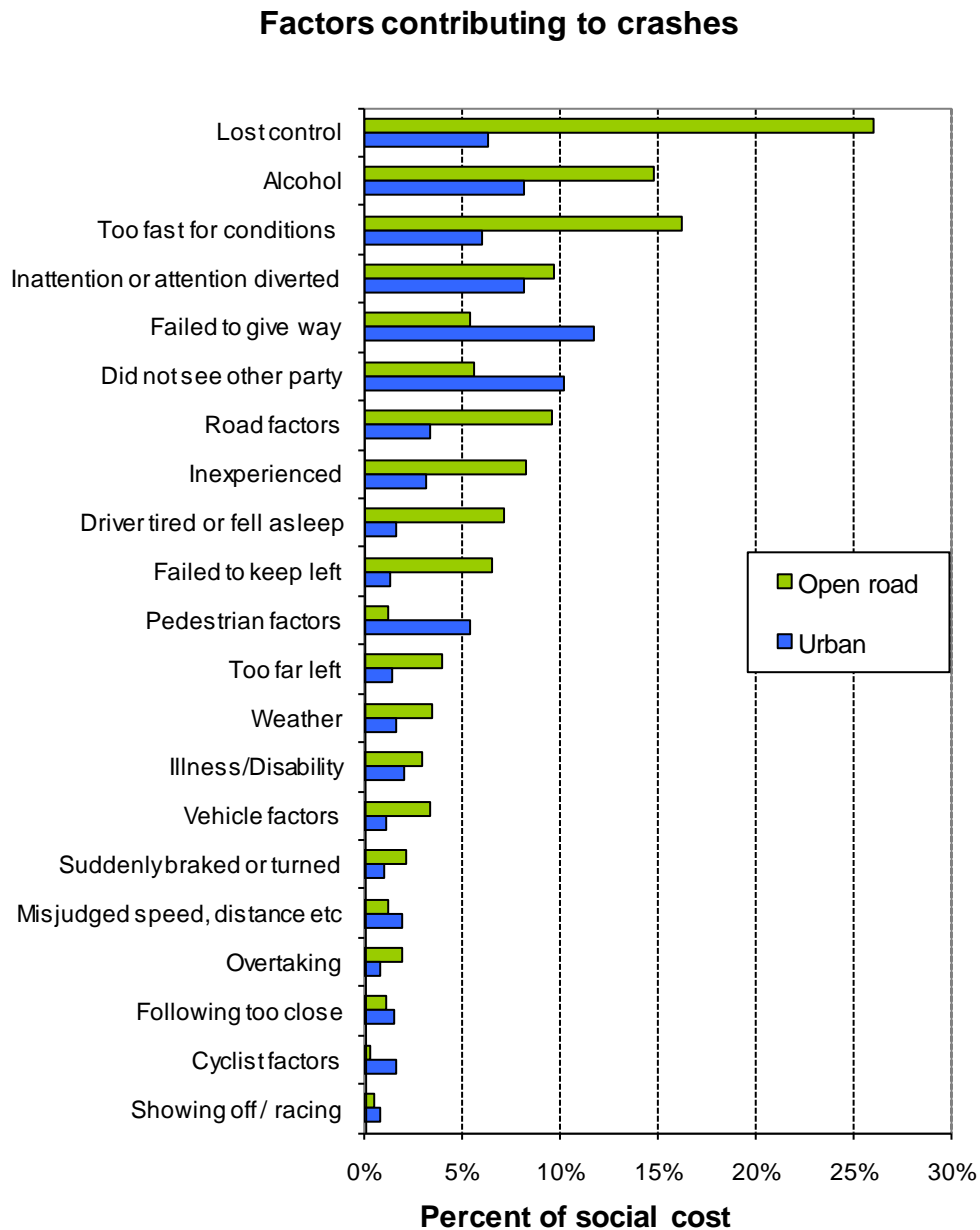
Crash outcomes and road user behaviour

	2000	2001	2002	2003	2004	2005	2006	2007	2008	2009
Road Crash Data										
Deaths										
Number of road deaths	462	455	405	461	435	405	393	421	365	396
Deaths per 10,000 vehicles	1.8	1.7	1.5	1.6	1.5	1.3	1.3	1.3	1.1	1.2
Deaths per 100,000 people	12.1	11.8	10.3	11.5	10.7	9.9	9.5	10.0	8.6	9.3
Injuries										
Reported injuries	10962	12368	13918	14372	13890	14456	15174	16013	15174	14842
Number hospitalised (all discharges)	5990	6700	6530	6540	6580	7210	7680	7440	7550	7839
Number hospitalised for over 1 day #	2846	2880	2750	2720	2710	2860	3020	3060	2880	2824
Number hospitalised for over 3 days #	1815	1794	1740	1700	1700	1840	1900	1990	1880	1868
Behavioural Measures										
Speed										
Rural speed, % over 100 km/h	52%	47%	43%	39%	39%	36%	32%	29%	30%	29%
Rural speed, mean (km/h)	101.1	100.2	99.1	98	97.8	97.1	96.4	96.3	96.6	96.3
Rural speed, 85th percentile (km/h)	111	109	107	105	105	104	103	103	103	103
Alcohol										
Number of drivers killed with excess alcohol	58	55	60	70	69	58	54	65	59	
Percent of drivers killed with excess alcohol	21%	21%	24%	27%	27%	25%	24%	27%	28%	
Occupant Restraints										
Seat belts worn by adults, front	90%	92%	92%	92%	94%	95%	95%	95%	95%	95%
Seat belts worn by adults, rear	76%	70%	78%	81%	86%	86%	89%	87%	87%	
Children restrained, 0-14 years	87%	89%	94%	96%	97%	94%	96%	94%	97%	97%
Child restraints used, 0-4 years	79%	82%	86%	86%	87%	89%	91%	91%	90%	
Cycle helmets										
Cycle helmets worn, weekday	93%	94%	89%	89%	92%	91%	94%	92%	92%	92%

Includes only the first stay in hospital

Note: Road deaths for 2009 are for the 12 months to the end of November 2009. Reported injuries for 2009 are for the 12 months to the end of May 2009.

Factors contributing to crashes – ranked by social cost*



Notes: Crash data for the 12 months to end of May 2009

Since there can be several contributing factors for a single crash the figures represented in this graph add to more than 100%.

* Social cost calculations include loss of life or life quality, loss of output due to injuries, medical and rehabilitation costs, legal and court costs and property damage.