

# Young drivers

CRASH STATISTICS FOR THE YEAR ENDED 31 DEC 2007

Prepared by Strategy and Sustainability, Ministry of Transport

CRASH FACTSHEET

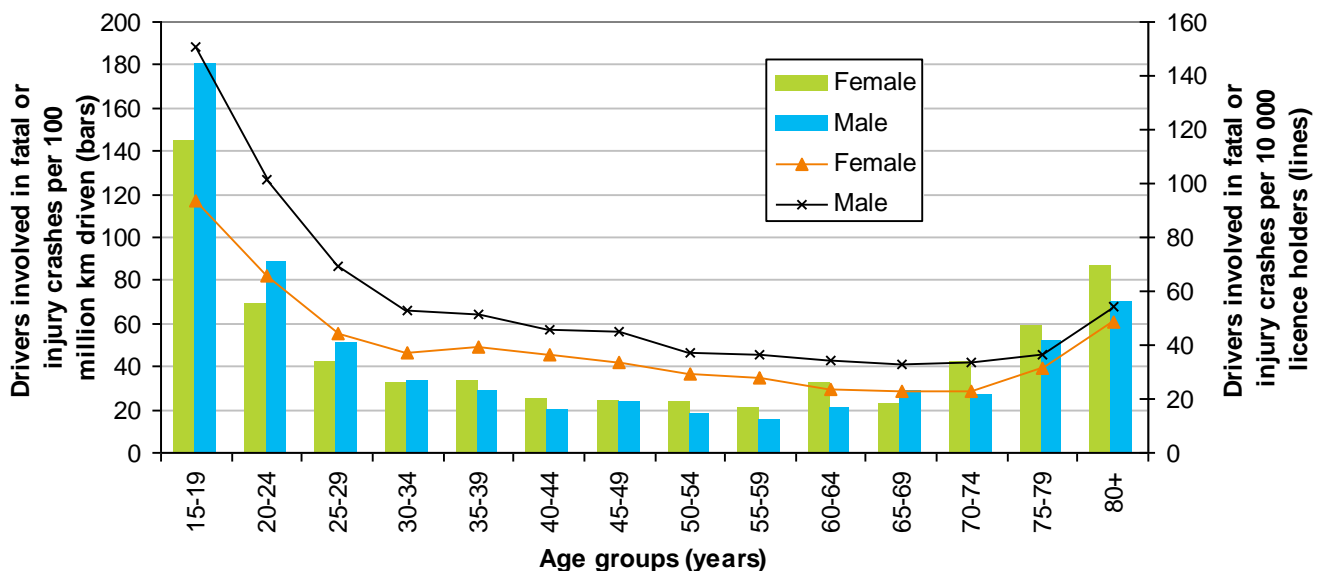
2008

In 2007 young drivers (those aged 15-24) were involved in 127 fatal traffic crashes, 809 serious injury crashes and 4,086 minor injury crashes. Of these crashes, the 15 to 24 year old drivers were at fault in 106 of the fatal crashes, 638 of the serious injury crashes and 3,164 of the minor injury crashes, resulting in 125 deaths, 848 serious injuries and 4,719 minor injuries.

The total social cost of crashes in which 15 to 24 year old drivers were at fault, was \$1.1 billion. This is almost one-third of the social cost associated with all injury crashes.

The graph below (from the *Ongoing New Zealand Household Travel Survey*<sup>1</sup>) shows that male drivers in the 15 to 19 year old age group are approximately seven and a half times more likely to crash (per 100 million kilometres driven) than male drivers in the 45 to 49 year old age group. Female drivers aged 15 to 19 have a lower crash risk than males of the same age, but are still approximately six times more likely to crash (per 100 million kilometres driven) than female drivers in the 45 to 49 year old age group. Male and female drivers in the 20 to 24 year old age group are approximately three times more likely to crash than 45 to 49 year old drivers of the same gender.

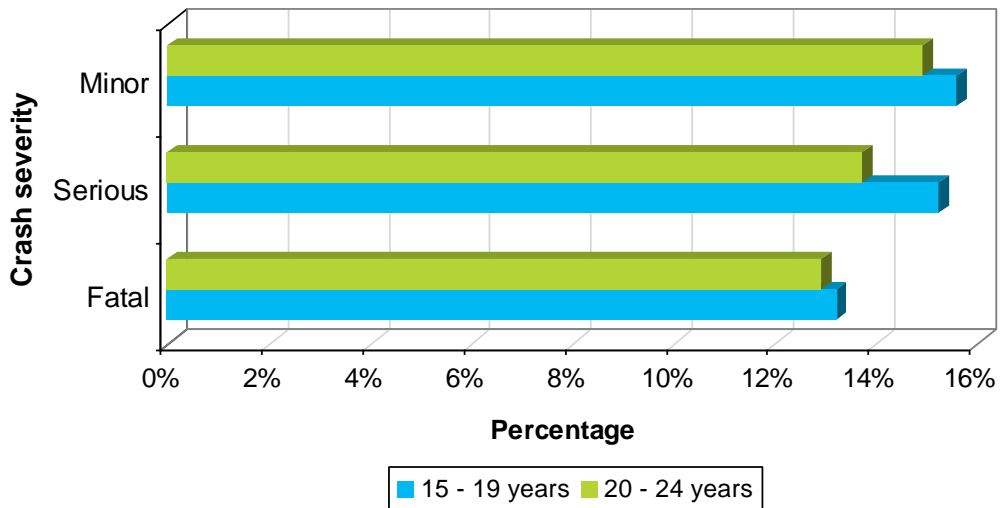
Number of drivers involved in fatal and injury crashes by gender, distance driven and number of licence holders



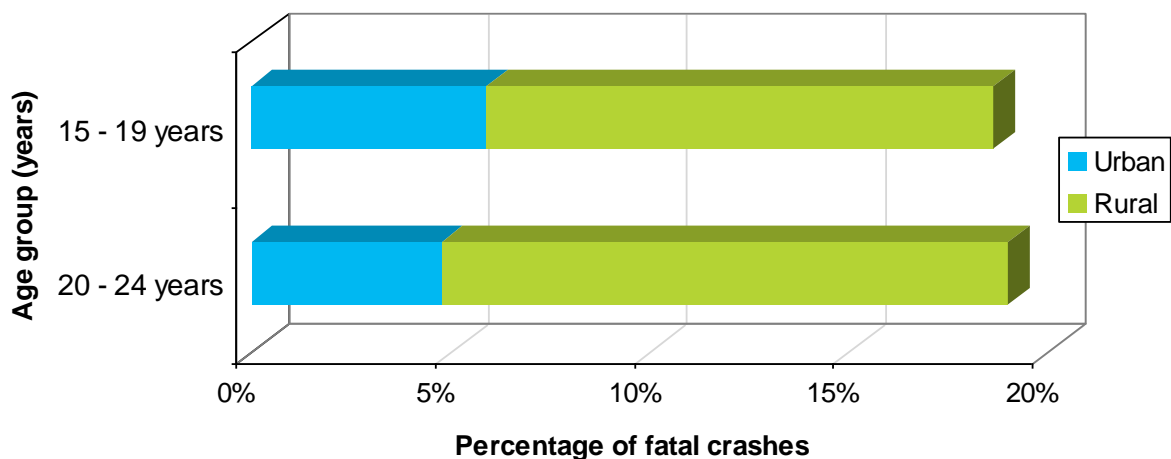
<sup>1</sup> <http://www.transport.govt.nz/ongoing-travel-survey-index/>

As the graphs below illustrate, young drivers tend to be over-represented in all types of crash. Recent figures show that 15 to 19 year old drivers make up just seven percent of all licensed car drivers<sup>2</sup>. Yet, between 2005 and 2007, 15 to 19 year old drivers accounted for 16 percent of all drivers involved in minor injury crashes, 15 percent of those in serious injury crashes, and 13 percent of drivers involved in fatal crashes. Similarly, 20 to 24 year old drivers make up approximately nine percent of licensed car drivers but, between 2005 and 2007, they accounted for 15 percent of drivers involved in minor injury crashes, 14 percent of those in serious injury crashes, and 13 percent of drivers involved in fatal crashes. Of all young drivers (15 to 24 years old) involved in fatal crashes between 2005 and 2007, 75 percent were male. Males accounted for 72 percent of young drivers involved in serious injury crashes and 64 percent of those involved in minor injury crashes over the same period.

**Young drivers as a proportion of all crash involved drivers (2005 - 2007)**



**Percentage of all fatal crashes that involve younger drivers (2005 - 2007)**



**Note:** The graph includes drivers of all types of motorised vehicles, including motorcycles.

A high proportion of fatal crashes for young drivers (15-24 years old) occur on rural roads. This is due to the typically high speeds on these roads, which result in a higher impact speed if a crash occurs.

Thirty-seven percent of all fatal crashes involve a driver between the ages of 15 and 24.

<sup>2</sup> The car licence population consists of drivers with full, restricted or learner car licences.

## Time series

### Young drivers involved in fatal and injury crashes

Year	15-19 year old drivers				20-24 year old drivers			
	Fatal		Injury		Fatal		Injury	
	Number	%	Number	%	Number	%	Number	%
1985	163	16.7%	4427	21.9%	214	21.9%	4415	21.9%
1986	167	16.9%	4421	22.0%	220	22.2%	4235	21.1%
1987	195	18.6%	4199	21.3%	202	19.3%	3976	20.2%
1988	146	15.7%	3314	17.9%	195	20.9%	3642	19.6%
1989	146	14.9%	3033	17.0%	169	17.2%	3500	19.6%
1990	128	13.8%	3157	16.6%	207	22.3%	3641	19.2%
1991	115	13.9%	2947	16.2%	174	21.1%	3382	18.5%
1992	97	12.0%	2667	15.3%	160	19.8%	3381	19.3%
1993	95	12.5%	2501	15.1%	143	18.8%	3010	18.2%
1994	76	10.3%	2786	15.4%	135	18.3%	3287	18.2%
1995	86	11.0%	2768	14.9%	130	16.6%	3466	18.6%
1996	94	14.0%	2302	14.5%	100	14.9%	2693	17.0%
1997	81	11.3%	2149	14.9%	95	13.3%	2229	15.5%
1998	75	10.9%	1922	14.5%	105	15.2%	1979	15.0%
1999	74	10.6%	1776	13.8%	99	14.2%	1767	13.8%
2000	61	10.0%	1534	13.2%	71	11.6%	1661	14.3%
2001	67	11.2%	1801	13.6%	75	12.5%	1813	13.7%
2002	50	9.1%	2297	14.6%	63	11.4%	2093	13.3%
2003	76	12.1%	2312	14.0%	76	12.1%	2331	14.1%
2004	81	13.7%	2314	14.4%	72	12.2%	2188	13.6%
2005	83	15.5%	2457	14.6%	71	13.3%	2360	14.0%
2006	64	11.7%	2592	15.0%	65	11.9%	2459	14.2%
2007	65	11.4%	2812	14.9%	73	12.8%	2623	13.9%

**Note:** The table includes drivers of all types of motorised vehicles, including motorcycles.

### Vehicle type and gender of young drivers involved in fatal crashes

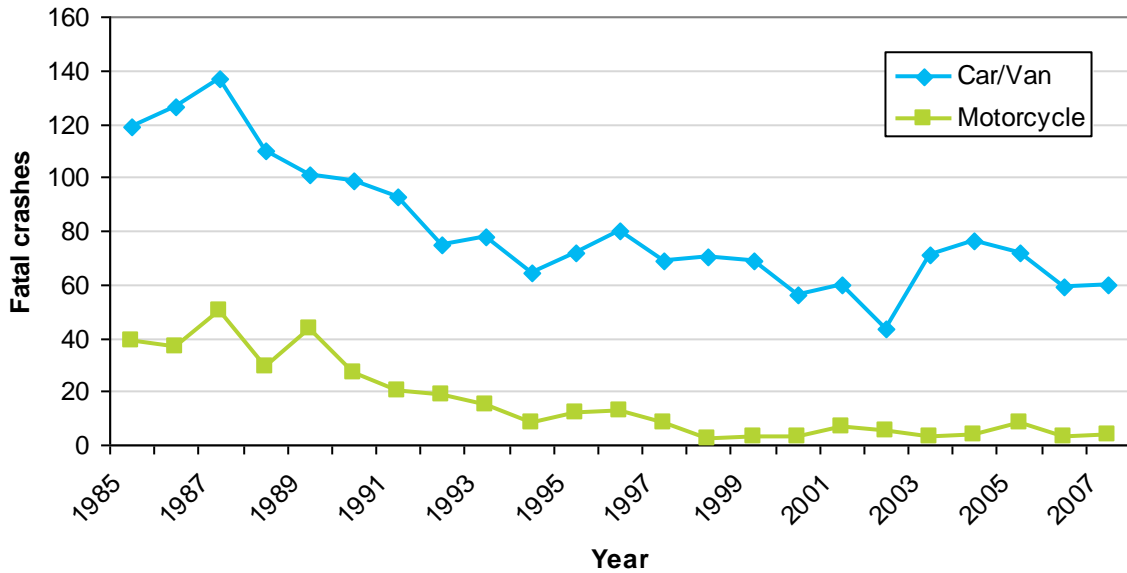
Year	15-19 year old drivers						20-24 year old drivers					
	Car/van			Motorcycle			Car/van			Motorcycle		
	Male	Female	Total	Male	Female	Total	Male	Female	Total	Male	Female	Total
1985	99	20	119	39	0	39	108	35	143	46	1	47
1986	98	28	126	34	3	37	123	31	154	47	3	50
1987	110	27	137	47	3	50	106	31	137	42	2	44
1988	81	29	110	27	2	29	113	20	133	52	1	53
1989	86	15	101	41	2	43	89	29	118	37	1	38
1990	75	24	99	27	0	27	111	34	145	47	0	47
1991	67	26	93	20	0	20	105	35	140	22	2	24
1992	58	17	75	17	2	19	97	20	117	29	1	30
1993	68	10	78	15	0	15	84	22	106	27	1	28
1994	51	13	64	8	0	8	86	24	110	14	0	14
1995	52	20	72	11	1	12	82	18	100	24	3	27
1996	60	20	80	13	0	13	67	15	82	10	0	10
1997	46	23	69	8	0	8	48	23	71	13	0	13
1998	54	16	70	2	0	2	63	20	83	14	0	14
1999	47	22	69	3	0	3	58	27	85	4	0	4
2000	38	18	56	3	0	3	53	11	64	4	0	4
2001	49	11	60	7	0	7	57	11	68	5	0	5
2002	32	11	43	5	0	5	41	15	56	3	0	3
2003	57	14	71	3	0	3	53	18	71	2	0	2
2004	58	18	76	3	1	4	46	16	62	5	0	5
2005	56	16	72	8	0	8	47	12	59	2	0	2
2006	39	20	59	3	0	3	38	18	56	6	0	6
2007	39	21	60	4	0	4	45	17	62	6	0	6

Three effects that contributed to the reduction in the number of 15-24 year old drivers involved in crashes during the 1980s and 90s are: the introduction of the Graduated Driver Licensing System in

1987; the decline in motorcycling; and the targeted enforcement and advertising of the Supplementary Road Safety Package from late 1995.

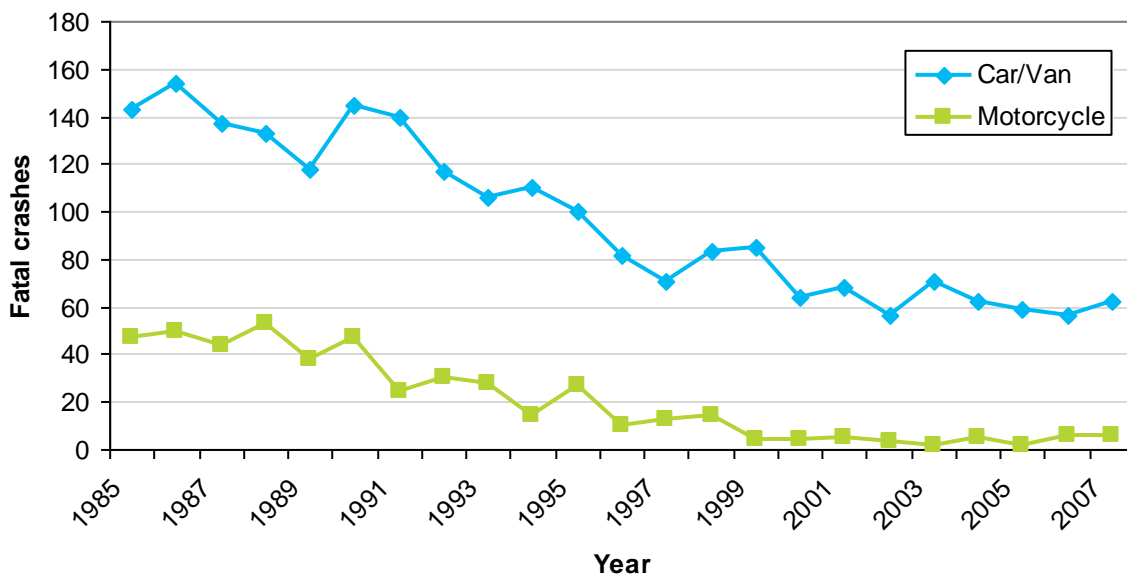
## Vehicle type for young drivers involved in fatal crashes

15 - 19 year old drivers involved in fatal crashes by vehicle type (1985 - 2007)



Since 1985 there has been a 50 percent reduction in the number of 15-19 year old car drivers involved in fatal crashes and a 90 percent reduction in the number of motorcycle riders in the same age group involved in fatal crashes.

20 - 24 year old drivers involved in fatal crashes by vehicle type (1985 - 2007)



Since 1985 there has been a 57 percent reduction in the number of 20-24 year old car drivers involved in fatal crashes and an 87 percent reduction in the number of motorcycle riders in the same age group involved in fatal crashes.

## Who dies?

People in the 15 to 24 year old age group are most likely to die in fatal crashes in which young drivers of a similar age are at fault. Between 2005 and 2007, approximately 74 percent of the passengers killed in vehicles driven by young at-fault drivers were in the 15 to 24 year old age group.

### Deaths in crashes where 15-24 year old drivers were at fault (2005-2007)

Age	At-fault drivers	At-fault drivers' passengers	Other road users
0-14	0	21	1
15-19	88	80	7
20-24	79	32	7
25-29	0	10	2
30-34	0	2	3
35-39	0	0	5
40-44	0	1	7
45-49	0	1	7
50-54	0	1	3
55-59	0	0	2
60+	0	2	20
Unknown	0	1	1
<b>Total</b>	<b>167</b>	<b>151</b>	<b>65</b>

**Note:** The table includes drivers of all types of motorised vehicles, including motorcycles.

## When do young driver crashes occur?

Young drivers tend to be disproportionately represented in fatal crashes at night. For example, between 2005 and 2007, over 50 percent of fatal crashes occurring on Friday and Saturday nights involved a young driver, whereas only 31 percent of daytime crashes involved a young driver.

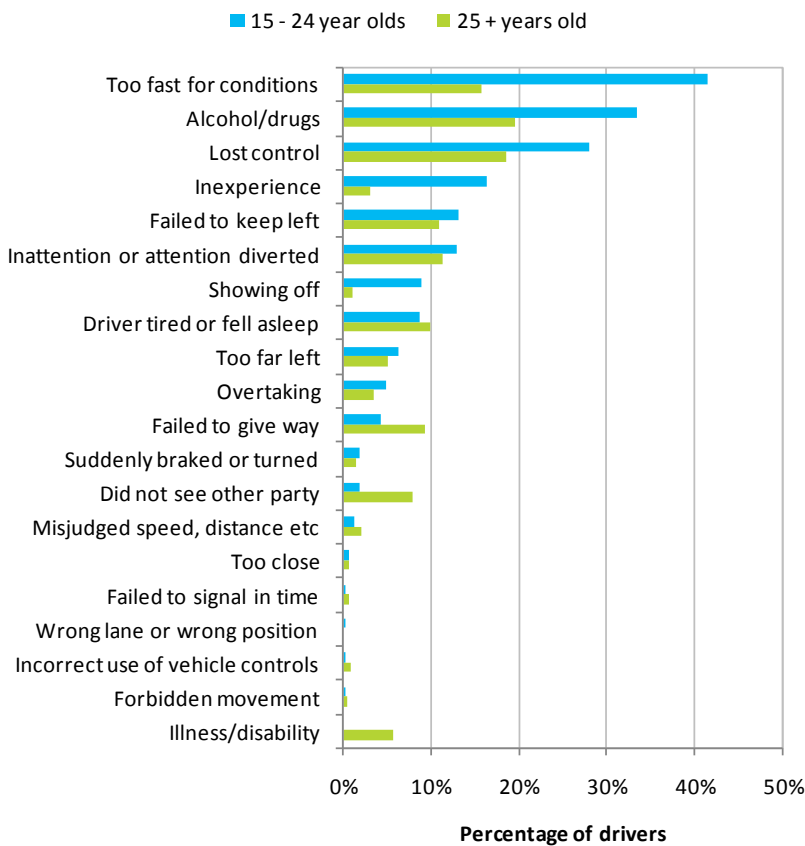
### Fatal crashes involving 15-24 year old drivers – by time of day and day of week (2005-2007)

Day	Day (0600-1759)		Evening (1800-2159)		Night (2200-0559)	
	Number	%	Number	%	Number	%
Monday	17	21%	9	43%	11	48%
Tuesday	22	30%	6	32%	11	42%
Wednesday	22	29%	7	26%	7	37%
Thursday	28	33%	19	61%	12	43%
Friday	28	29%	11	31%	39	52%
Saturday	38	39%	16	46%	45	52%
Sunday	32	31%	6	40%	3	21%
<b>Total</b>	<b>187</b>	<b>31%</b>	<b>74</b>	<b>40%</b>	<b>128</b>	<b>47%</b>

**Note:** On the day shown 'night' begins at 2200 and finishes the following day at 0559.

# Types of crash

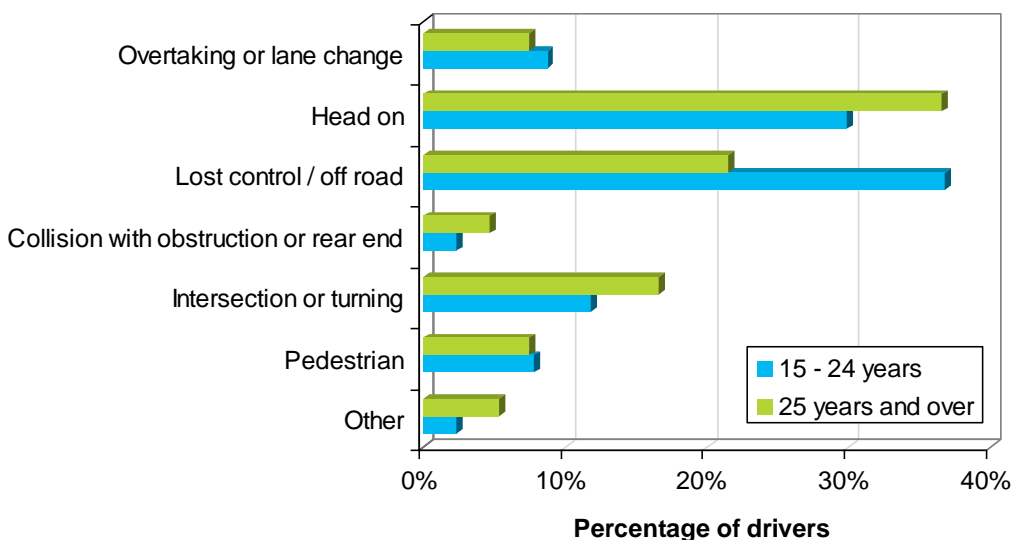
## Driver contribution to fatal crashes (2003 - 2007), by age group



Alcohol/drugs and speed are the major contributing factors for young drivers involved in fatal crashes. These young drivers are more than two and half times as likely to have speed as a factor than drivers over the age of 25.

Crashes which involve drivers losing control of their vehicles ('Lost control/off road' on the graph below) are a major feature in crashes involving young drivers. Thirty-seven percent of 15 to 24-year-old drivers involved in fatal crashes were in single-vehicle loss-of-control or run-off-road crashes, compared to twenty-two percent for older drivers. In addition, many head-on crashes also involve drivers losing control of their vehicles.

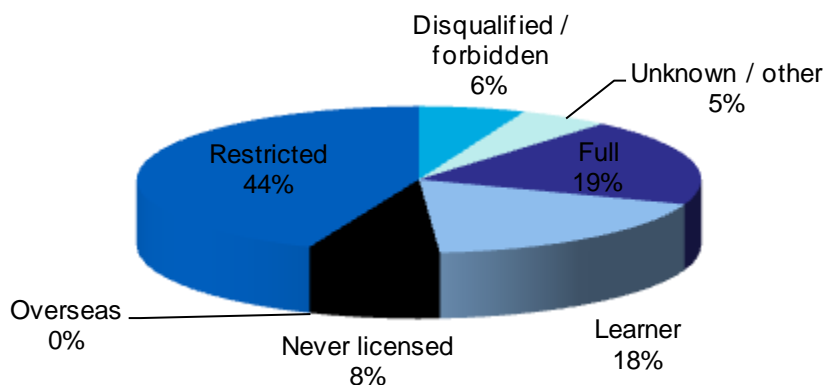
## Percentage of drivers involved in fatal crashes by crash movement type (2005 - 2007)



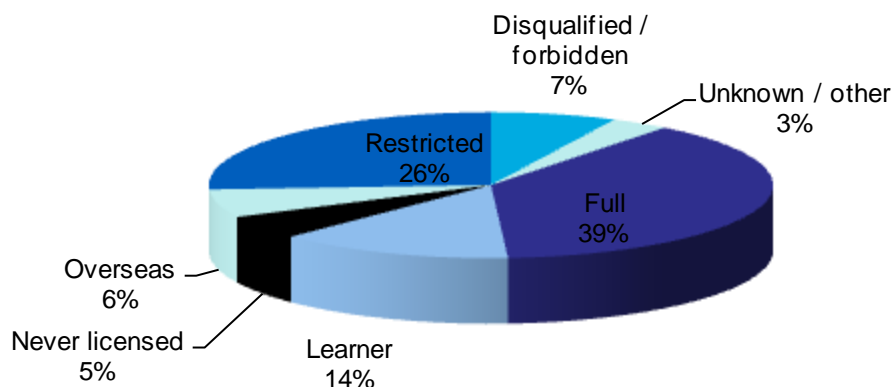
## Licence status of young drivers in fatal crashes

The pie graphs below show the licence status of 15 to 24-year old drivers involved in fatal crashes. Restricted and learner licence holders make up a large proportion of these drivers. A similar pattern occurs for 15 to 24-year-old drivers involved in injury crashes. This reflects the high number of learner and restricted licence holders in this age group.

### Licence status of 15 -19 year old drivers involved in fatal crashes (2005 - 2007)



### Licence status of 20 - 24 year old drivers involved in fatal crashes (2005 - 2007)



Note: Unknown/other includes drivers with an expired, unknown or wrong licence class.

For further information on crash statistics see *Motor Vehicle Crashes in New Zealand*, the annual statistical statement produced by the Ministry of Transport. This publication is available in secondary school libraries and many public libraries.

Enquiries relating to crash statistics may be directed to the Ministry of Transport, PO Box 3175, Wellington, or by email on [info@transport.govt.nz](mailto:info@transport.govt.nz). For more information about road safety, visit the Ministry of Transport website at [www.transport.govt.nz](http://www.transport.govt.nz).

"Young Drivers" was prepared by Strategy and Sustainability, Ministry of Transport, July 2008.