

Section 8
Drivers involved in reported injury crashes

Table 49

**Drivers Involved in Fatal Crashes
by Age and Vehicle Type
Year ended 31 December 2004**

Age Group Years	----- Car/Van -----		----- Truck -----		----- Motorcycle -----		----- Total -----	
	Number	Percent Male	Number	Percent Male	Number	Percent Male	Number	Percent Male
0 to 14	-	-	-	-	1	100.0	1	100.0
15 to 19	76	76.3	1	100.0	4	75.0	81	76.5
20 to 24	62	74.2	5	100.0	5	100.0	72	77.8
25 to 29	38	65.8	7	100.0	3	100.0	49	73.5
30 to 34	44	59.1	16	93.8	3	100.0	63	69.8
35 to 39	34	64.7	12	100.0	5	100.0	52	76.9
40 to 44	38	76.3	12	100.0	3	100.0	56	83.9
45 to 49	39	74.4	7	100.0	6	100.0	54	81.5
50 to 54	14	78.6	11	100.0	5	100.0	30	90.0
55 to 59	23	60.9	11	100.0	3	100.0	38	76.3
60 to 64	17	70.6	2	100.0	1	100.0	20	75.0
65 to 69	12	75.0	-	-	-	-	13	76.9
70 and over	41	70.7	-	-	1	100.0	42	71.4
Unknown	14	57.1	3	66.7	-	-	20	60.0
Total	452	70.4	87	97.7	40	97.5	591	76.6

Note: Columns do not always add to the total as there are other vehicle types such as buses not included separately in the table.

Table 50

**Drivers Involved in Injury Crashes
by Age and Vehicle Type
Year ended 31 December 2004**

Age Group Years	----- Car/Van -----		----- Truck -----		----- Motorcycle -----		----- Total -----	
	Number	Percent Male	Number	Percent Male	Number	Percent Male	Number	Percent Male
0 to 14	32	68.8	-	-	9	88.9	42	73.8
15 to 19	2168	65.0	12	100.0	130	86.2	2314	66.4
20 to 24	2026	63.5	57	89.5	102	81.4	2188	65.1
25 to 29	1382	61.5	69	95.7	71	90.1	1537	64.6
30 to 34	1419	58.5	110	98.2	71	93.0	1625	63.2
35 to 39	1291	56.7	128	98.4	68	94.1	1521	62.7
40 to 44	1249	56.4	120	94.2	78	88.5	1491	62.2
45 to 49	1035	55.8	105	96.2	64	93.8	1253	62.3
50 to 54	737	58.5	81	97.5	42	90.5	899	64.6
55 to 59	618	60.2	62	95.2	24	79.2	748	65.1
60 to 64	474	63.5	34	100.0	17	88.2	558	67.7
65 to 69	357	58.5	14	100.0	6	100.0	388	61.9
70 and over	786	58.4	7	100.0	5	80.0	808	59.4
Unknown	610	24.8	49	26.5	11	45.5	691	26.2
Total	14184	58.8	848	92.3	698	87.8	16063	62.4

Note: Columns do not always add to the total as there are other vehicle types such as buses not included separately in the table.
Fatal crashes are not included in this table (see table 49).

Table 51
Car and Van Drivers Involved in Fatal Crashes by Age Group
Year ending 31 December

Year	15 to 19 Years	20 to 24 Years	25 to 29 Years	30 to 39 Years	40 to 59 Years	60 Years and over	Unknown and other	Total
1975	129	110	87	95	118	53	29	621
1976	116	113	63	79	116	53	27	567
1977	148	136	87	101	114	64	27	677
1978	109	141	84	97	124	56	24	635
1979	83	126	59	91	97	45	24	525
1980	95	132	80	81	88	58	20	554
1981	121	122	78	90	84	68	40	603
1982	112	156	70	105	104	59	21	627
1983	108	156	71	100	109	59	29	632
1984	116	139	84	110	116	56	18	639
1985	119	143	113	128	111	70	29	713
1986	126	154	100	139	127	60	35	741
1987	138	137	118	144	135	65	25	762
1988	110	133	105	119	131	68	19	685
1989	101	119	105	143	146	80	26	720
1990	99	145	105	128	122	59	36	694
1991	94	140	89	119	115	67	15	639
1992	76	119	85	122	120	74	28	624
1993	78	106	70	108	100	72	36	570
1994	64	110	81	117	110	54	21	557
1995	72	100	70	125	130	59	16	572
1996	80	82	70	94	114	60	21	521
1997	69	71	59	104	138	82	29	552
1998	70	84	61	115	115	74	28	547
1999	70	85	69	95	115	88	19	541
2000	56	64	42	94	128	87	21	492
2001	60	68	57	72	115	77	23	472
2002	44	55	54	79	108	69	18	427
2003	71	71	63	106	120	68	14	513
2004	76	62	38	78	114	70	14	452

Table 52
Car and Van Drivers Involved in Injury Crashes by Age Group
Year ending 31 December

Year	15 to 19 Years	20 to 24 Years	25 to 29 Years	30 to 39 Years	40 to 59 Years	60 Years and over	Unknown and other	Total
1975	2968	2730	1768	2192	2808	1189	1606	15261
1976	2767	2530	1615	2019	2546	1103	1155	13735
1977	2625	2542	1559	1972	2369	1018	1367	13452
1978	2195	2101	1251	1765	1950	945	1169	11376
1979	1987	1911	1171	1608	1826	898	1072	10473
1980	2474	2306	1343	1953	2145	998	335	11554
1981	2266	2378	1401	1890	2075	1032	417	11459
1982	2376	2619	1443	1999	2237	1068	374	12116
1983	2431	2616	1533	2145	2307	1292	373	12697
1984	2578	2908	1708	2423	2583	1326	413	13939
1985	2750	3201	1966	2677	2906	1382	440	15322
1986	2926	3113	1986	2748	2881	1431	429	15514
1987	2840	2938	2145	2785	2824	1415	431	15378
1988	2284	2766	2126	2826	2963	1452	442	14859
1989	2202	2777	2037	2725	3032	1456	465	14694
1990	2445	2947	2262	3041	3194	1611	449	15949
1991	2306	2756	2109	3184	3244	1582	350	15531
1992	2127	2813	1968	2995	3174	1502	329	14908
1993	2034	2525	1880	2825	3060	1485	345	14154
1994	2302	2713	1995	3136	3259	1607	412	15424
1995	2380	2930	1988	3299	3480	1565	362	16004
1996	2008	2298	1691	2745	3113	1427	380	13662
1997	1878	1896	1541	2539	2787	1212	400	12253
1998	1729	1743	1423	2309	2645	1168	442	11459
1999	1624	1578	1336	2347	2714	1169	454	11222
2000	1417	1496	1166	2089	2507	1072	408	10155
2001	1669	1675	1237	2366	2987	1292	441	11667
2002	2133	1949	1432	2660	3481	1527	691	13873
2003	2146	2163	1348	2802	3743	1623	704	14529
2004	2168	2026	1382	2710	3639	1617	642	14184

NOTE: Fatal crashes are not included in this table (see table 51).

Figure 30
Percentage of Crash Involved Car Drivers by
Age and Sex for Fatal Crashes

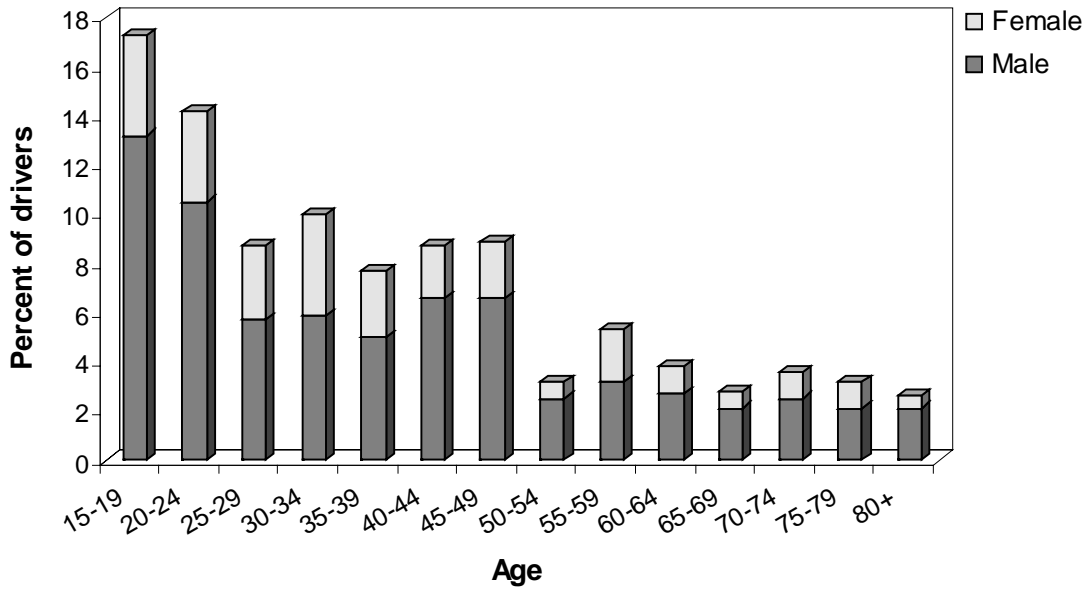


Figure 31
Percentage of Crash Involved Car Drivers by
Age and Sex for Injury Crashes

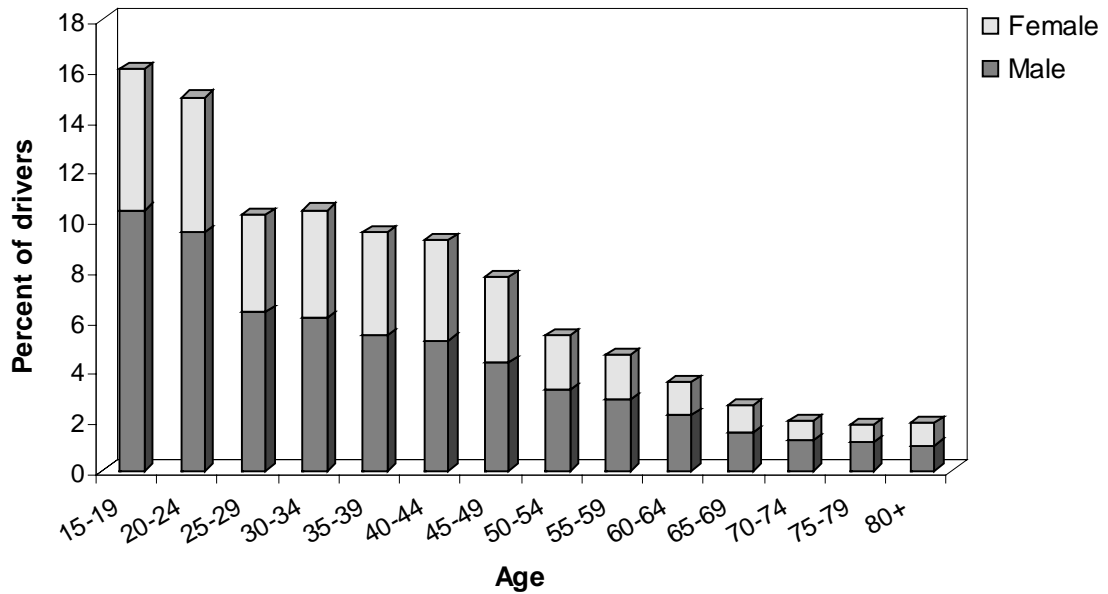


Figure 32
Percentage of Crash Involved Car Drivers
in Selected Age Groups - Fatal Crashes

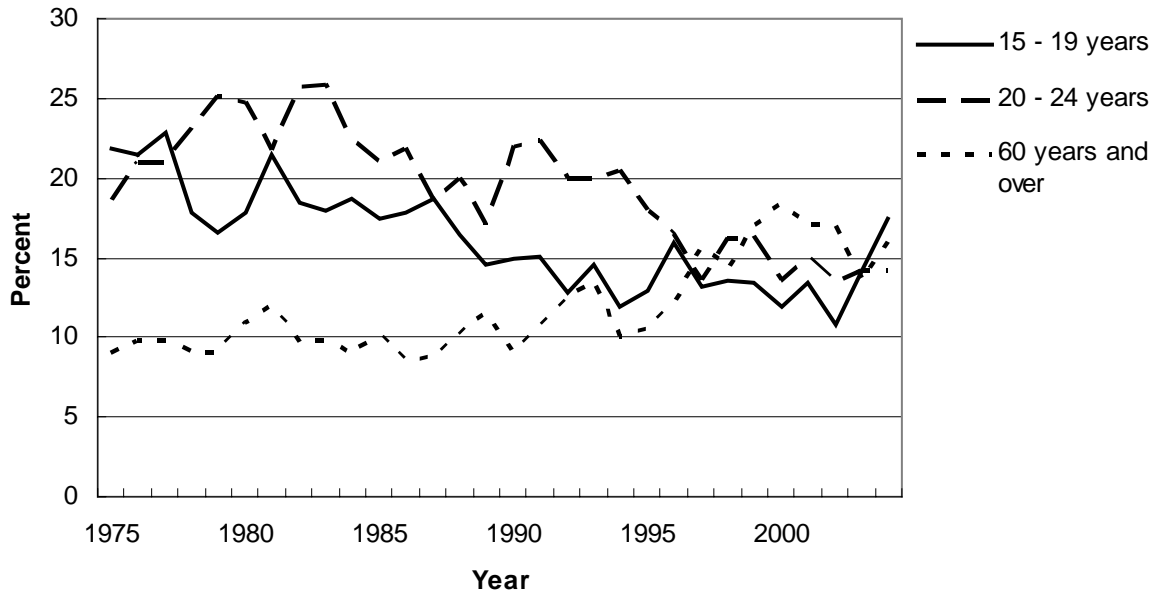


Figure 33
Percentage of Crash Involved Car Drivers
in Selected Age Groups - Injury Crashes

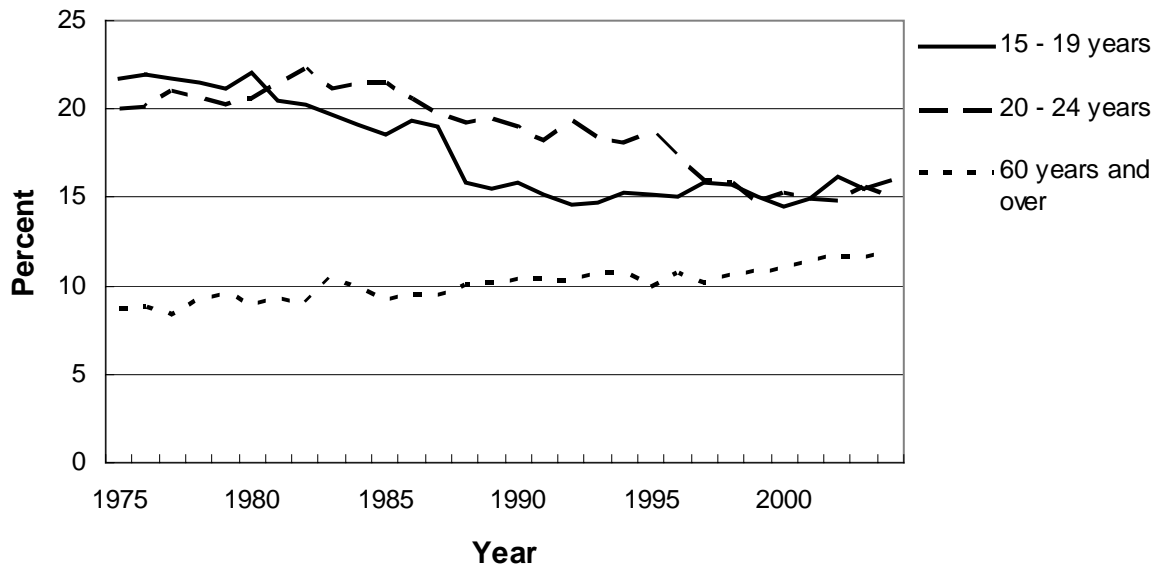


Table 53
Car and Van Drivers Involved in Fatal Crashes by Age Group and Sex
Year ending 31 December

Year	15 to 29 Years	Percent Male	30 to 59 Years	Percent Male	60 Years and over	Percent Male	Total	Percent Male
1975	326	87.7	213	83.6	53	88.7	621	83.6
1976	292	86.3	195	86.7	53	67.9	567	82.7
1977	371	82.7	215	78.1	64	79.7	677	79.2
1978	334	84.7	221	74.7	56	82.1	635	78.6
1979	268	85.8	188	78.2	45	62.2	525	79.4
1980	307	83.1	169	79.9	58	74.1	554	80.5
1981	321	82.2	174	74.7	68	72.1	603	76.9
1982	338	83.7	209	83.3	59	74.6	627	82.0
1983	335	84.2	209	78.0	59	71.2	632	80.1
1984	339	81.4	226	73.5	56	82.1	639	77.9
1985	375	77.9	239	73.2	70	81.4	713	75.6
1986	380	80.3	266	77.8	60	78.3	741	78.4
1987	393	77.4	279	73.8	65	63.1	762	74.1
1988	348	80.5	250	74.8	68	66.2	685	76.6
1989	325	80.3	289	74.4	80	70.0	720	76.1
1990	349	77.4	250	75.6	59	72.9	694	75.9
1991	323	72.8	234	75.6	67	73.1	639	73.6
1992	280	78.2	242	73.6	74	66.2	624	73.7
1993	254	82.3	208	75.5	72	66.7	570	76.7
1994	255	77.3	227	72.2	54	74.1	557	74.9
1995	242	75.2	255	69.4	59	67.8	572	71.3
1996	232	76.7	208	71.2	60	73.3	521	73.7
1997	199	66.8	242	75.2	82	75.6	552	71.9
1998	215	76.3	230	67.4	74	68.9	547	70.6
1999	224	71.4	210	73.8	88	67.0	541	71.0
2000	162	72.2	222	72.1	87	65.5	492	69.9
2001	185	82.2	187	69.5	77	61.0	472	73.5
2002	153	71.2	187	65.2	69	71.0	427	67.4
2003	205	75.6	226	69.5	68	72.1	513	71.9
2004	176	73.3	192	68.2	70	71.4	452	70.4

Table 54
Car and Van Drivers Involved in Injury Crashes by Age Group and Sex
Year ending 31 December

Year	15 to 29 Years	Percent Male	30 to 59 Years	Percent Male	60 Years and over	Percent Male	Total	Percent Male
1975	7466	78.5	5000	72.3	1189	73.2	15261	68.5
1976	6912	79.2	4565	72.1	1103	74.1	13735	70.4
1977	6726	78.7	4341	72.2	1018	74.2	13452	69.4
1978	5547	78.0	3715	70.1	945	70.2	11376	68.4
1979	5069	76.8	3434	68.9	898	70.0	10473	67.3
1980	6123	76.4	4098	68.8	998	69.3	11554	72.1
1981	6045	75.8	3965	70.2	1032	69.5	11459	72.0
1982	6438	73.5	4236	66.4	1068	68.7	12116	69.5
1983	6580	72.8	4452	67.6	1292	68.9	12697	69.4
1984	7194	72.2	5006	67.6	1326	67.5	13939	69.2
1985	7917	72.5	5583	65.9	1382	67.4	15322	68.7
1986	8025	72.5	5629	65.7	1431	68.9	15514	68.5
1987	7923	69.6	5609	64.1	1415	65.2	15378	66.2
1988	7176	69.1	5789	64.1	1452	64.4	14859	65.8
1989	7016	69.7	5757	63.2	1456	65.9	14694	65.9
1990	7654	69.0	6235	61.9	1611	64.9	15949	65.0
1991	7171	68.1	6428	61.9	1582	64.7	15531	64.6
1992	6908	66.6	6169	61.7	1502	64.7	14908	63.5
1993	6439	64.9	5885	60.9	1485	60.7	14154	62.2
1994	7010	64.9	6395	60.1	1607	64.9	15424	62.3
1995	7298	65.6	6779	60.7	1565	62.6	16004	62.6
1996	5997	64.7	5858	60.1	1427	63.3	13662	61.8
1997	5315	64.8	5326	59.9	1212	61.9	12253	61.4
1998	4895	64.6	4954	59.0	1168	60.7	11459	60.4
1999	4538	64.5	5061	58.2	1169	60.2	11222	60.2
2000	4079	65.0	4596	58.6	1072	61.8	10155	60.5
2001	4581	64.6	5353	56.8	1292	58.0	11667	59.2
2002	5514	63.8	6141	57.9	1527	59.9	13873	59.2
2003	5657	63.8	6545	56.8	1623	59.1	14529	58.5
2004	5576	63.6	6349	57.5	1617	59.9	14184	58.8

NOTE: Fatal crashes are not included in this table (see table 53).

Figure 34
Male Drivers as a Percentage of All Crash
Involved Car Drivers - All Ages

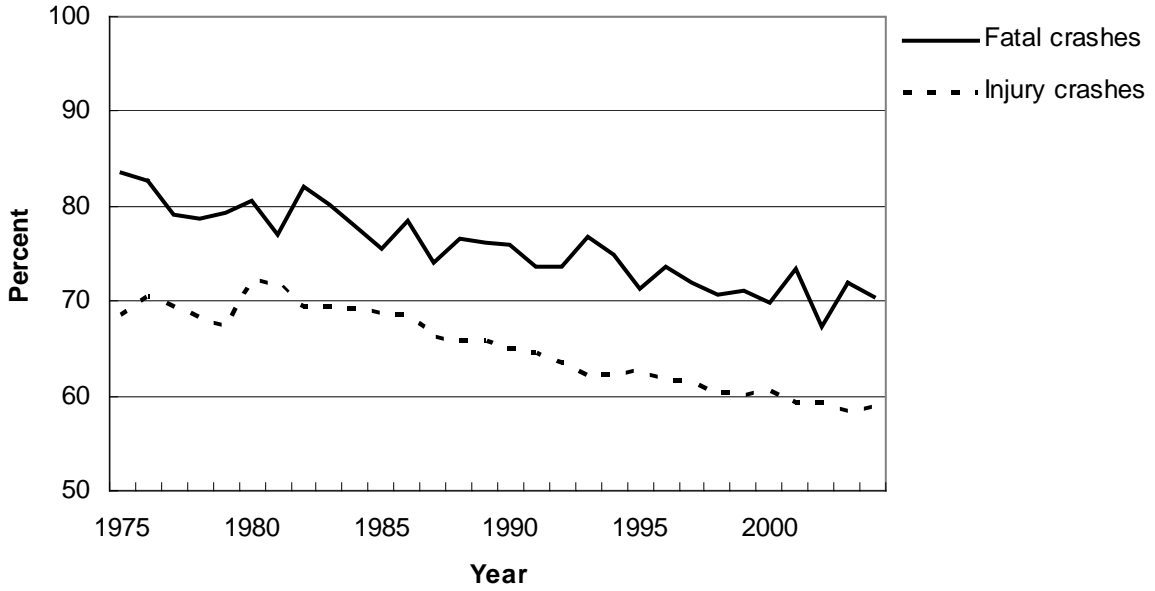


Figure 35
Male Drivers as a Percentage of All Crash
Involved Car Drivers - Young Drivers 15-29 Years

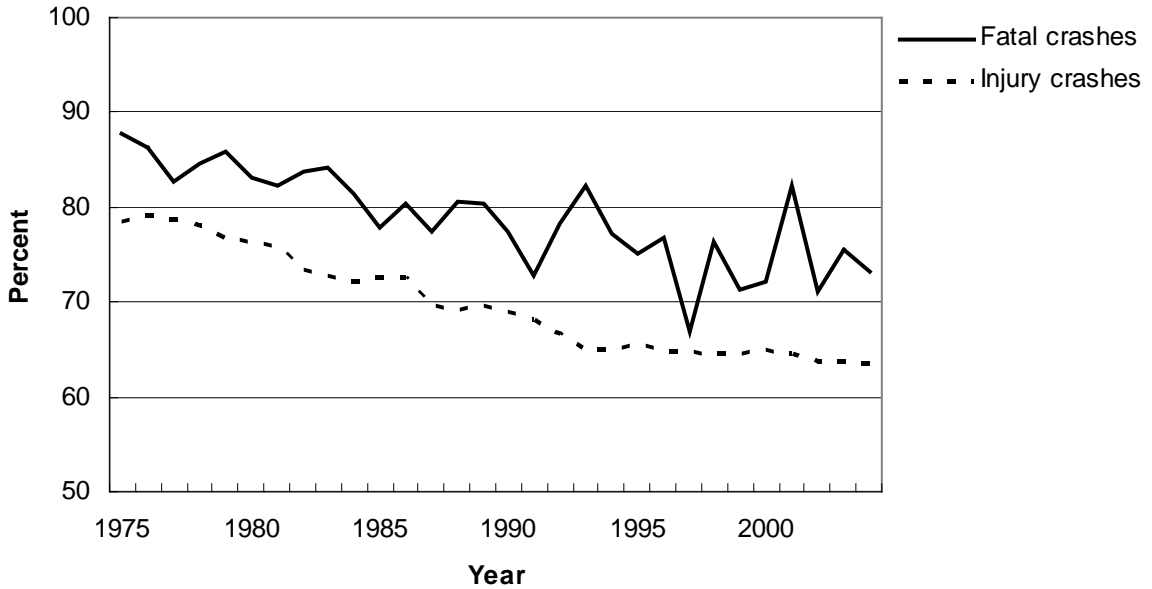


Table 55

**Percentage of Crash Involved Drivers
with ALCOHOL Recorded as a Factor Contributing to the Crash
Year ended 31 December 2004**

Age Group Years	Fatal Crashes				Injury Crashes			
	Car/Van	Truck	Motorcycl e	Total	Car/Van	Truck	Motorcycl e	Total
15 to 19	26.3	-	-	24.7	12.3	-	10.8	12.2
20 to 24	30.6	-	-	27.8	12.4	7.0	6.9	12.0
25 to 29	44.7	-	-	38.8	10.8	0.0	4.2	10.0
30 to 39	29.5	3.6	-	23.5	9.9	1.3	2.2	8.7
40 to 59	15.8	0.0	-	12.9	5.5	0.8	6.3	4.9
60 and over	2.9	-	-	2.7	1.2	1.8	0.0	1.2
Total	22.6	1.2	28.2	19.5	8.5	1.5	5.9	7.9

Note: Where the number of drivers is less than twenty the percentage is not calculated.

Table 56

**Percentage of Crash Involved Drivers
with TOO FAST FOR CONDITIONS Recorded as a Factor Contributing to the Crash
Year ended 31 December 2004**

Age Group Years	Fatal Crashes				Injury Crashes			
	Car/Van	Truck	Motorcycl e	Total	Car/Van	Truck	Motorcycl e	Total
15 to 19	40.8	-	-	39.5	24.4	-	18.5	24.0
20 to 24	45.2	-	-	40.3	17.2	8.8	12.7	16.8
25 to 29	26.3	-	-	24.5	10.5	7.2	12.7	10.3
30 to 39	24.4	7.1	-	20.9	7.0	8.8	11.5	7.3
40 to 59	11.4	17.1	-	14.6	4.6	6.8	10.1	4.9
60 and over	4.3	-	-	4.0	1.8	9.1	10.7	2.1
Total	23.7	10.7	33.3	22.1	10.4	7.6	12.7	10.2

Note: Where the number of drivers is less than twenty the percentage is not calculated.

Table 57

**Percentage of Crash Involved Drivers with
FAILED TO GIVE WAY OR STOP Recorded as a Factor Contributing to the Crash
Year ended 31 December 2004**

Age Group Years	Fatal Crashes				Injury Crashes			
	Car/Van	Truck	Motorcycl e	Total	Car/Van	Truck	Motorcycl e	Total
15 to 19	3.9	-	-	4.9	14.3	-	8.5	14.0
20 to 24	6.5	-	-	5.6	14.6	7.0	6.9	14.1
25 to 29	2.6	-	-	4.1	13.5	4.3	4.2	12.7
30 to 39	10.3	0.0	-	7.0	12.8	7.1	2.2	11.9
40 to 59	10.5	4.9	-	9.0	15.4	9.0	2.9	14.0
60 and over	15.7	-	-	14.7	26.8	14.5	3.6	25.7
Total	8.9	3.6	2.6	7.9	15.8	8.1	4.6	14.8

Note: Where the number of drivers is less than twenty the percentage is not calculated.

