

National Health Statistics for Road Users

Contents

Tables

		<u>Page</u>
Table 1	Age and Type of Road User Hospitalised	120
Table 2	Number of Days Stay by Age and Type of Road User Hospitalised.	121
Table 3	Average Number of Days Stay by Age and Type of Road User Hospitalised	122

Figures

Figure 1	Deaths from Motor Vehicle Crashes as a Percentage of all Deaths for Selected Age Groups.	118
Figure 2	Hospital Discharges from Motor Vehicle Crashes (by Length of Stay in Hospital)	118
Figure 3	Hospital Discharges from Motor Vehicle Crashes	119
Figure 4	Total Days Stay in Hospital Resulting from Motor Vehicle Crashes	119
Figure 5	Number of Hospitalisations from Road Crashes by Age and Gender	120
Figure 6	Total Days Stay in Hospital from Road Crashes by Age and Gender	121
Figure 7	Hospitalisations and Days Stay by Road User Type	122
Figure 8	Number of Pedal Cyclists Hospitalised from Non Motor Vehicle Crashes	123
Figure 9	Days Stay in Hospital for Pedal Cyclists Injured in Non Motor Vehicle Crashes	123

Notes

1. The material presented in this section is derived from data provided by the New Zealand Health Information Service, Ministry of Health.
2. The data includes those who, as a result of a motor vehicle crash, were injured seriously enough to be admitted to hospital. (Figures 8 and 9 show data for cyclists who were injured in non-motor vehicle crashes. These casualties are not included in the Ministry of Transport's data base which records only motor vehicle crashes.) The data base includes only those discharged during the 2005 calendar year.
3. Casualties who are readmitted for further treatment are included only once in the casualty count, but their total stay in hospital is recorded.

Figure 1
Deaths from Motor Vehicle Crashes as a percentage of all
Deaths for Selected Age Groups - 2001

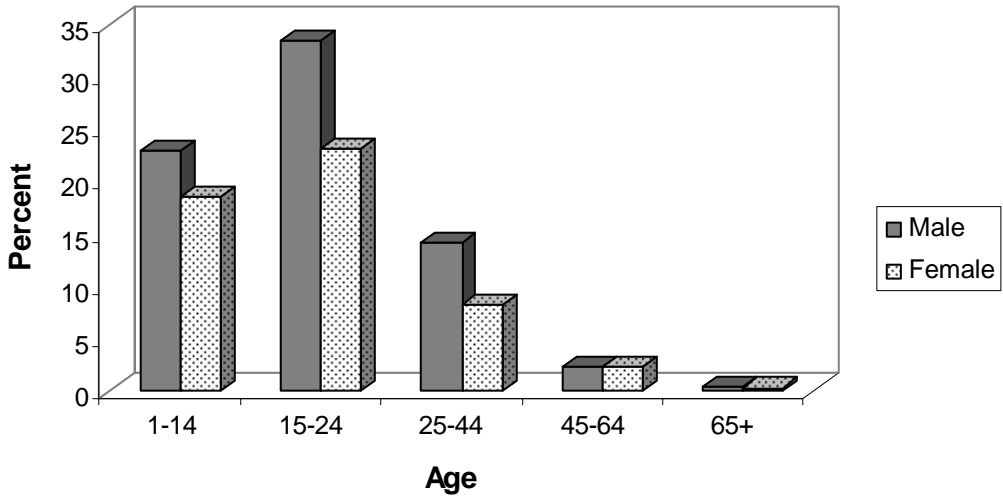


Figure 2
Hospital Discharges from Motor vehicle Crashes
(by Length of Stay in Hospital)

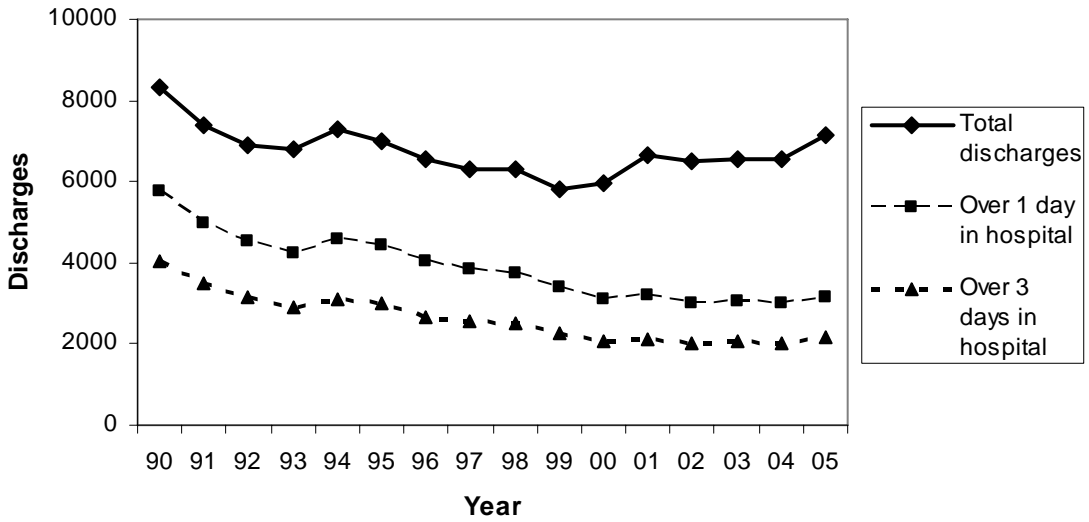


Figure 3
Hospital Discharges from Motor Vehicle Crashes
(Readmissions not Included)

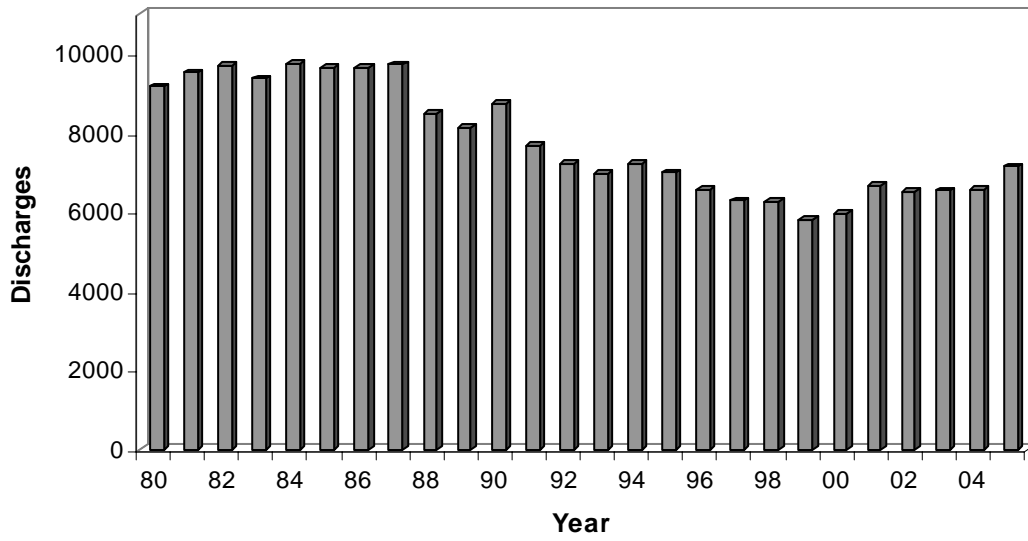


Figure 4
Total Days Stay in Hospital Resulting from
Motor Vehicle Crashes

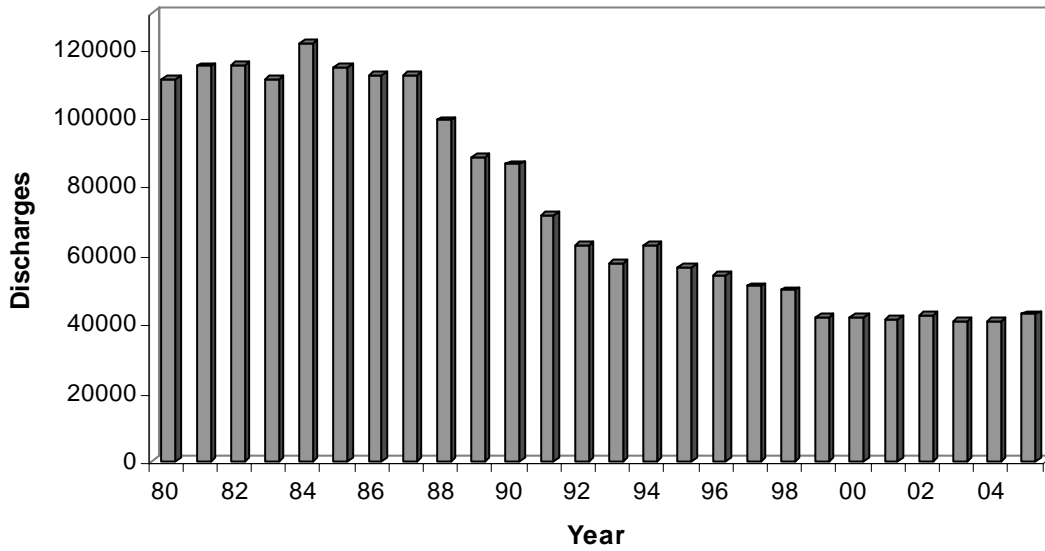


Table 1
Motor vehicle Crashes
Age and Types of Road Users Hospitalised
Year ending 31 December 2005

Age Group Years	Drivers	Passengers	Motor Cycle Drivers	Motor Cycle Pillions	Pedal Cyclists	Pedestrians	Other Road Users (1)	TOTAL Casualties
Under 5	-	85	0	2	2	43	26	158
5 to 9	3	81	13	3	16	69	9	194
10 to 14	9	120	43	5	41	78	28	324
15 to 19	455	463	151	7	27	82	85	1270
20 to 24	420	260	125	9	19	58	75	966
25 to 29	252	110	89	6	15	43	36	551
30 to 34	271	100	117	2	31	25	37	583
35 to 39	242	75	98	4	29	35	41	524
40 to 44	228	75	97	6	22	40	37	505
45 to 49	175	69	91	2	28	33	28	426
50 to 54	148	59	49	3	13	25	36	333
55 to 59	137	55	39	6	19	20	41	317
60 to 64	99	37	22	2	6	19	23	208
65 to 69	75	42	10	-	5	16	19	167
70 to 74	76	43	9	0	7	25	19	179
75 to 79	84	36	3	1	5	21	27	177
80 and over	97	53	3	-	2	40	65	260
TOTALS	2771	1763	959	58	287	672	632	7142

NOTE: (1) Includes unknown
SOURCE: NZHIS Ministry of Health.

Figure 5
Number of Hospitalisations from Road Crashes by Age and Sex

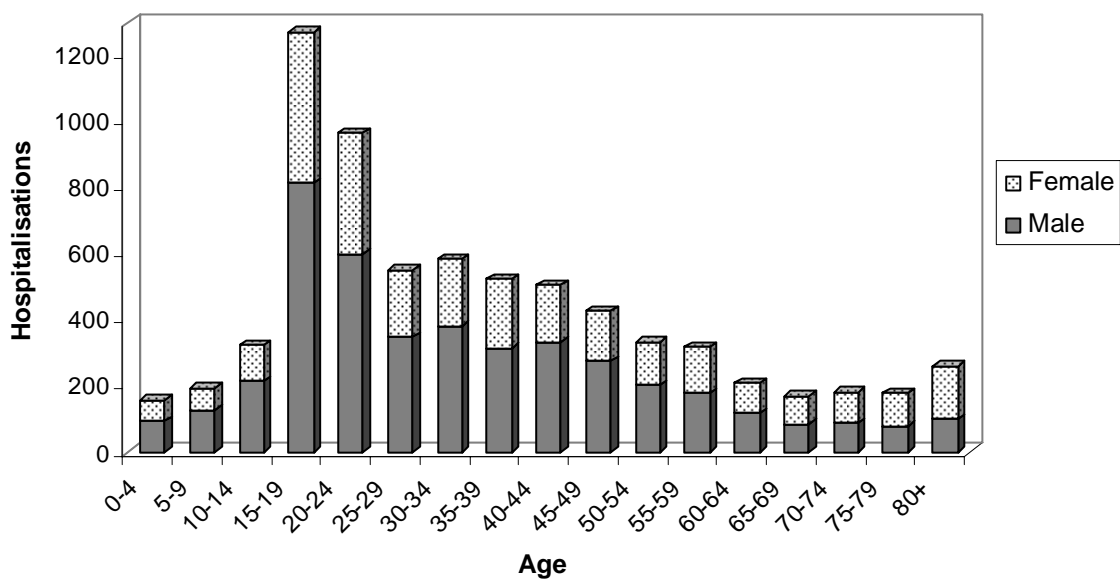


Table 2

**Motor vehicle Crashes
Number of Days Stay by Age and Type of Road User Hospitalised
Year ending 31 December 2005**

Age Group Years	Drivers	Passengers	Motor Cycle Drivers	Motor Cycle Pillions	Pedal Cyclists	Pedestrians	Other Road Users (1)	TOTAL Casualties
Under 5	-	337	0	7	3	110	21	478
5 to 9	4	237	29	44	92	426	7	839
10 to 14	13	519	146	41	127	240	95	1181
15 to 19	2554	1794	706	74	55	356	751	6290
20 to 24	1465	1170	561	80	117	231	448	4072
25 to 29	1026	803	385	9	89	216	283	2811
30 to 34	1386	386	724	11	53	112	371	3043
35 to 39	1200	396	620	77	398	314	341	3346
40 to 44	1000	262	735	35	167	244	244	2687
45 to 49	880	251	804	1	193	362	235	2726
50 to 54	754	339	396	62	22	225	403	2201
55 to 59	854	345	546	6	80	283	480	2594
60 to 64	647	304	321	32	8	356	163	1831
65 to 69	526	467	154	-	30	81	379	1637
70 to 74	546	365	81	3	40	326	158	1519
75 to 79	787	268	25	26	3	491	355	1955
80 and over	756	694	74	-	88	760	1055	3427
TOTALS	14398	8937	6307	508	1565	5133	5789	42637

NOTE: (1) Includes unknown
SOURCE: NZHIS Ministry of Health.

**Figure 6
Total Days Stay in Hospital from Road Crashes by Age and Sex**

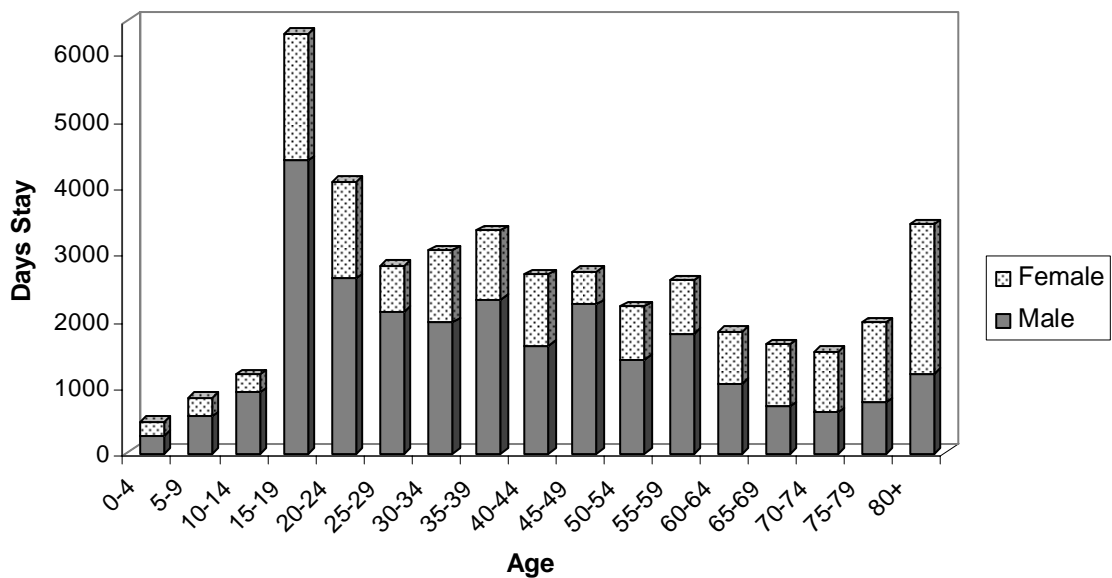


Table 3

**Motor vehicle Crashes
Average Number of Days Stay by Age and Type of Road User Hospitalised
Year ending 31 December 2005**

Age Group Years	Drivers	Passengers	Motor Cycle Drivers	Motor Cycle Pillions	Pedal Cyclists	Pedestrians	Other Road Users (1)	TOTAL Casualties
Under 5	-	4	-	-	-	3	1	3
5 to 9	-	3	-	-	-	6	-	4
10 to 14	-	4	3	-	3	3	3	4
15 to 19	6	4	5	-	2	4	9	5
20 to 24	3	5	4	-	-	4	6	4
25 to 29	4	7	4	-	-	5	8	5
30 to 34	5	4	6	-	2	4	10	5
35 to 39	5	5	6	-	14	9	8	6
40 to 44	4	3	8	-	8	6	7	5
45 to 49	5	4	9	-	7	11	8	6
50 to 54	5	6	8	-	-	9	11	7
55 to 59	6	6	14	-	-	-	12	8
60 to 64	7	8	15	-	-	-	7	9
65 to 69	7	11	-	-	-	-	-	10
70 to 74	7	8	-	-	-	13	-	8
75 to 79	9	7	-	-	-	23	13	11
80 and over	8	13	-	-	-	19	16	13
TOTALS	5	5	7	9	5	8	9	6

NOTES: (1) Includes unknown
Average days stay are not calculated when there are fewer than 20 individuals
SOURCE: NZHIS Ministry of Health.

**Figure 7
Hospitalisations and Days Stay by Road User Type**

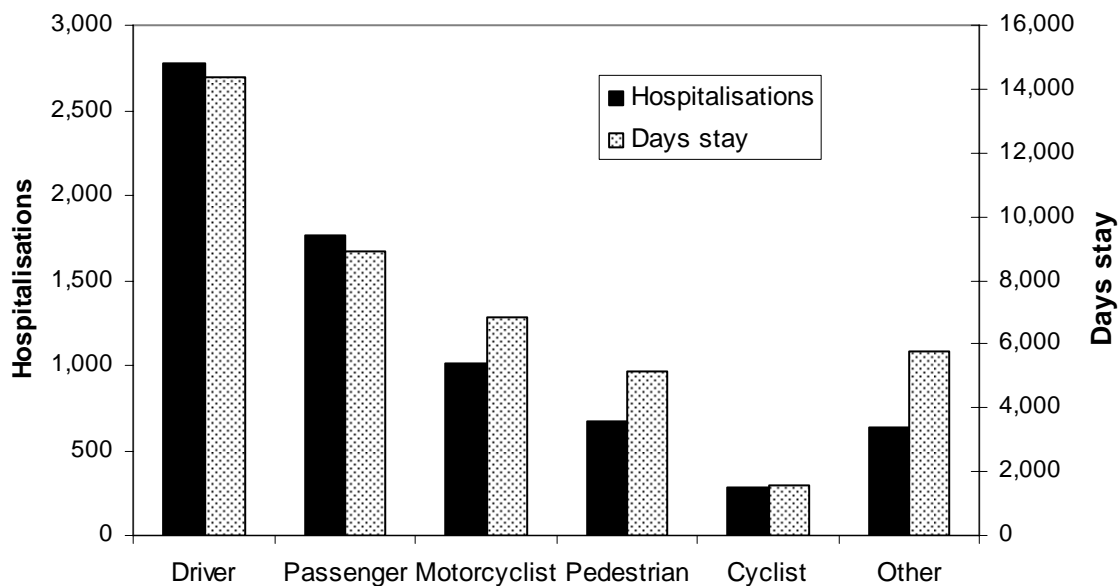


Figure 8
Number of Pedal Cyclists Hospitalised from
Non Motor Vehicle Crashes

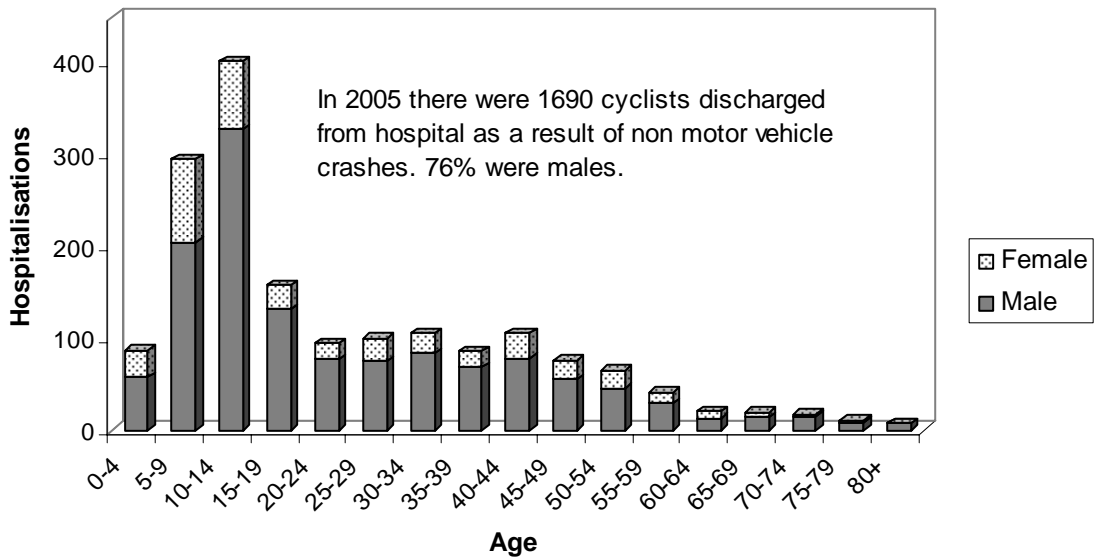


Figure 9
Days Stay in Hospital for Pedal Cyclists injured in
Non Motor Vehicle Crashes

