

## **National Health Statistics for Road Users**



## Contents

### Tables

		<u>Page</u>
Table 1	Age and Type of Road User Hospitalised . . . . .	120
Table 2	Number of Days Stay by Age and Type of Road User Hospitalised. . . . .	121
Table 3	Average Number of Days Stay by Age and Type of Road User Hospitalised . . . . .	122

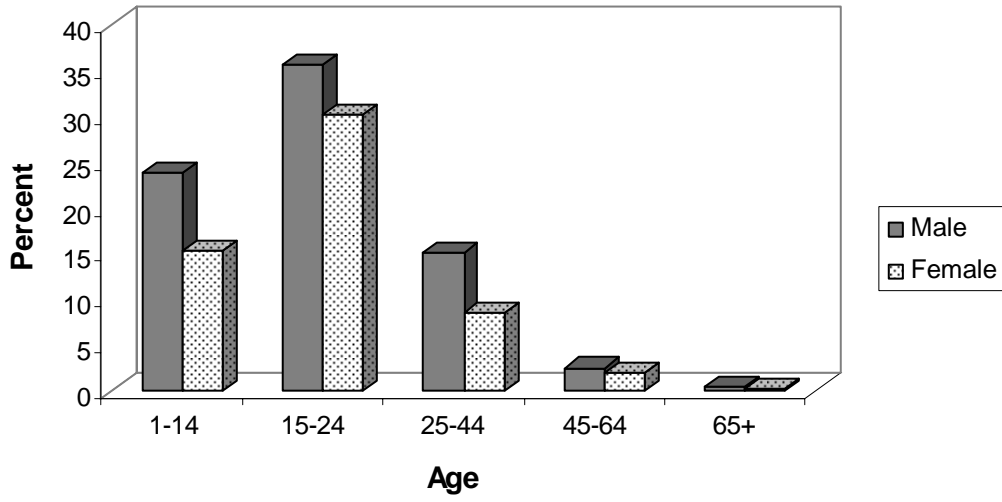
### Figures

Figure 1	Deaths from Motor Vehicle Crashes as a Percentage of all Deaths for Selected Age Groups.	118
Figure 2	Hospital Discharges from Motor Vehicle Crashes (by Length of Stay in Hospital) . . . . .	118
Figure 3	Hospital Discharges from Motor Vehicle Crashes . . . . .	119
Figure 4	Total Days Stay in Hospital Resulting from Motor Vehicle Crashes . . . . .	119
Figure 5	Number of Hospitalisations from Road Crashes by Age and Gender . . . . .	120
Figure 6	Total Days Stay in Hospital from Road Crashes by Age and Gender . . . . .	121
Figure 7	Hospitalisations and Days Stay by Road User Type . . . . .	122
Figure 8	Number of Pedal Cyclists Hospitalised from Non Motor Vehicle Crashes . . . . .	123
Figure 9	Days Stay in Hospital for Pedal Cyclists Injured in Non Motor Vehicle Crashes . . . . .	123

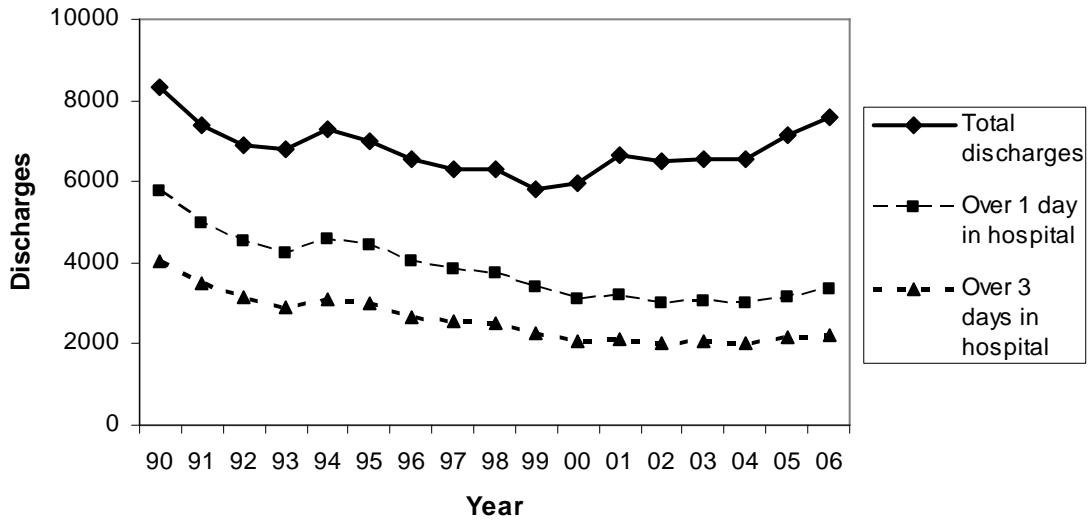
## Notes

1. The material presented in this section is derived from data provided by the New Zealand Health Information Service, Ministry of Health.
2. The data includes those who, as a result of a motor vehicle crash, were injured seriously enough to be admitted to hospital. (Figures 8 and 9 show data for cyclists who were injured in non-motor vehicle crashes. These casualties are not included in the Ministry of Transport's data base which records only motor vehicle crashes.) The data base includes only those discharged during the 2006 calendar year.
3. Casualties who are readmitted for further treatment are included only once in the casualty count, but their total stay in hospital is recorded.

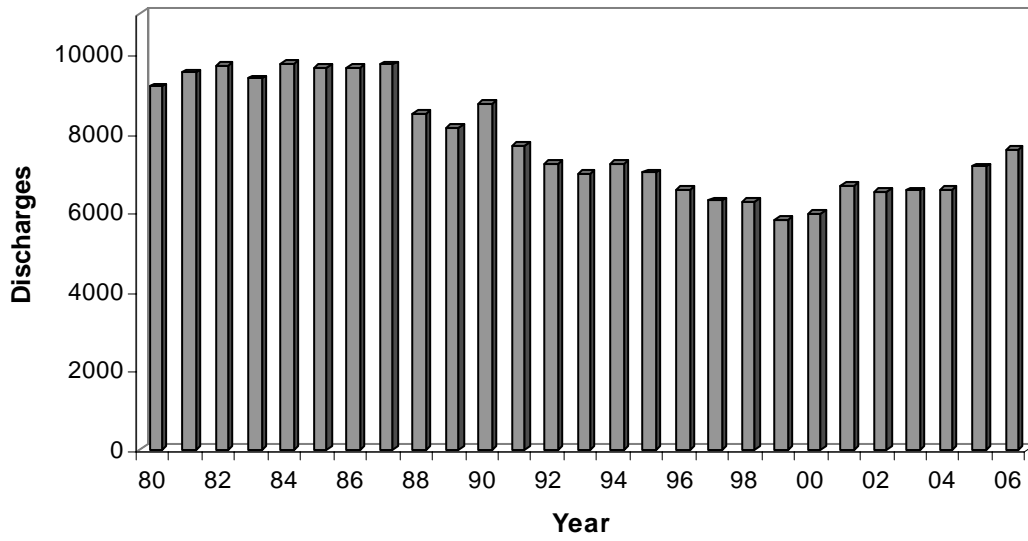
**Figure 1**  
**Deaths from Motor Vehicle Crashes as a percentage of all Deaths for Selected Age Groups - 2003**



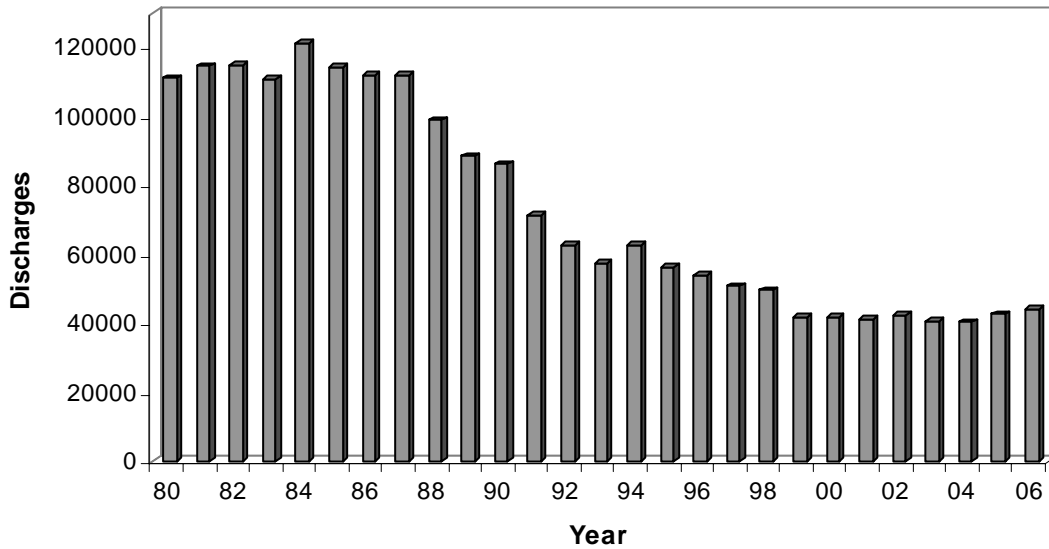
**Figure 2**  
**Hospital Discharges from Motor Vehicle Crashes (by Length of Stay in Hospital)**



**Figure 3**  
**Hospital Discharges from Motor Vehicle Crashes**  
**(Readmissions not Included)**



**Figure 4**  
**Total Days Stay in Hospital Resulting from**  
**Motor Vehicle Crashes**

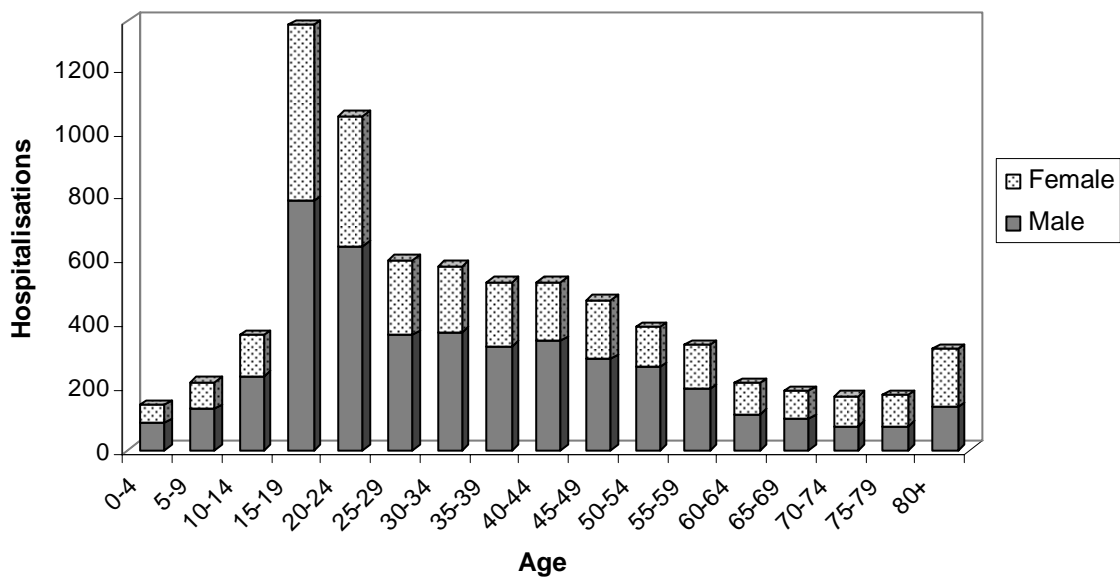


**Table 1**  
**Motor vehicle Crashes**  
**Age and Types of Road Users Hospitalised**  
**Year ending 31 December 2006**

Age Group Years	Drivers	Passengers	Motor Cycle Drivers	Motor Cycle Pillions	Pedal Cyclists	Pedestrians	Other Road Users (1)	TOTAL Casualties
Under 5	-	80	1	-	2	39	18	140
5 to 9	-	80	10	3	20	80	18	211
10 to 14	8	140	52	2	57	73	29	361
15 to 19	452	514	133	8	27	88	113	1335
20 to 24	436	276	159	9	23	73	73	1049
25 to 29	263	132	89	5	18	44	46	597
30 to 34	234	95	125	5	28	40	52	579
35 to 39	227	81	114	4	24	28	48	526
40 to 44	224	76	118	3	32	35	39	527
45 to 49	195	71	97	10	25	35	39	472
50 to 54	171	49	77	2	25	22	40	386
55 to 59	163	42	40	7	12	29	37	330
60 to 64	102	28	12	2	11	26	28	209
65 to 69	81	30	15	-	8	26	25	185
70 to 74	78	30	10	-	4	20	28	170
75 to 79	76	29	5	-	1	29	32	172
80 and over	120	54	2	2	2	47	90	317
<b>TOTALS</b>	<b>2830</b>	<b>1807</b>	<b>1059</b>	<b>62</b>	<b>319</b>	<b>734</b>	<b>755</b>	<b>7566</b>

NOTE: (1) Includes unknown  
SOURCE: NZHIS Ministry of Health.

**Figure 5**  
**Number of Hospitalisations from Road Crashes by Age and Sex**

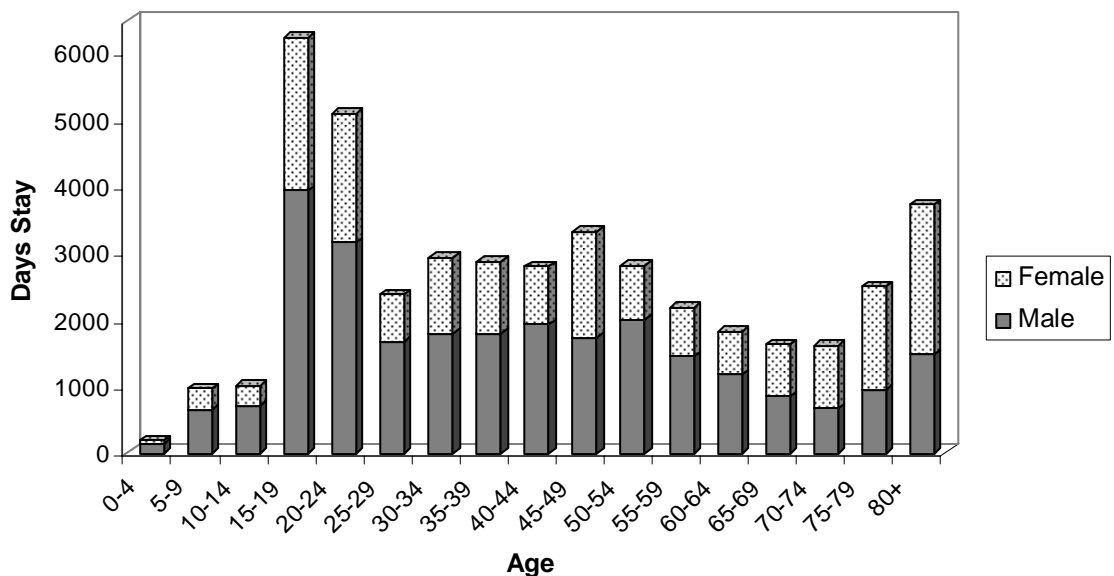


**Table 2**  
**Motor vehicle Crashes**  
**Number of Days Stay by Age and Type of Road User Hospitalised**  
**Year ending 31 December 2006**

Age Group Years	Drivers	Passengers	Motor Cycle Drivers	Motor Cycle Pillions	Pedal Cyclists	Pedestrians	Other Road Users (1)	TOTAL Casualties
Under 5	-	112	0	-	4	53	22	191
5 to 9	-	532	17	4	38	301	79	971
10 to 14	22	439	114	1	160	167	110	1013
15 to 19	1814	1866	478	69	87	983	941	6238
20 to 24	1203	1913	986	57	148	457	335	5099
25 to 29	873	455	421	72	76	133	344	2374
30 to 34	861	448	928	130	89	237	237	2930
35 to 39	884	444	939	56	25	415	119	2882
40 to 44	759	436	844	1	109	340	312	2801
45 to 49	1218	543	795	78	131	231	332	3328
50 to 54	883	567	698	44	134	219	266	2811
55 to 59	738	317	384	49	62	418	222	2190
60 to 64	817	291	117	2	56	295	242	1820
65 to 69	556	218	58	-	56	429	307	1624
70 to 74	889	219	76	-	49	232	152	1617
75 to 79	1031	315	13	-	5	620	522	2506
80 and over	1225	570	47	56	11	661	1166	3736
<b>TOTALS</b>	<b>13773</b>	<b>9685</b>	<b>6915</b>	<b>619</b>	<b>1240</b>	<b>6191</b>	<b>5708</b>	<b>44131</b>

NOTE: (1) Includes unknown  
SOURCE: NZHIS Ministry of Health.

**Figure 6**  
**Total Days Stay in Hospital from Road Crashes by Age and Sex**



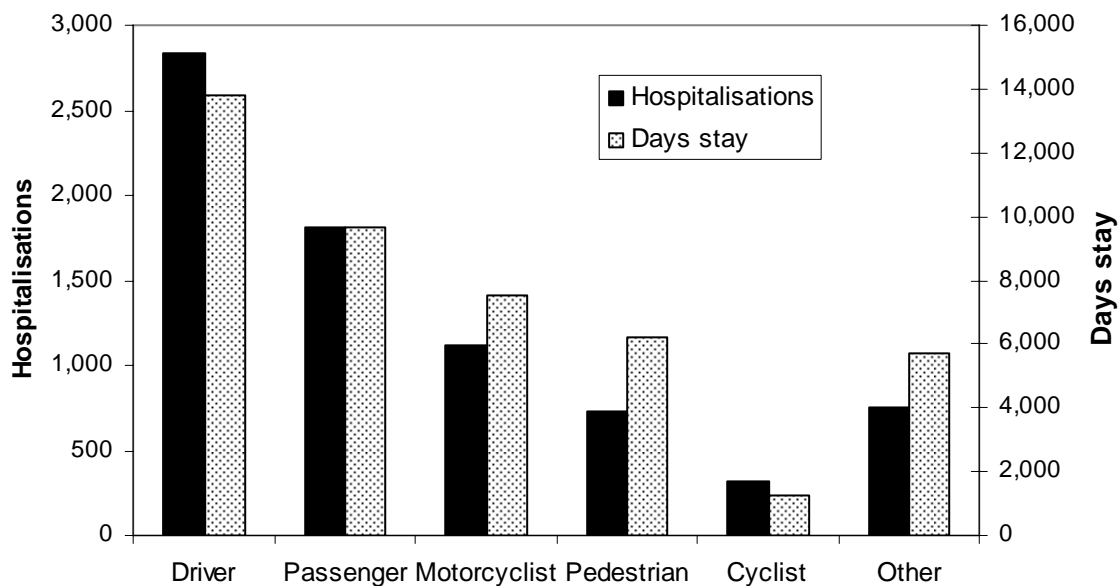
**Table 3**

**Motor vehicle Crashes  
Average Number of Days Stay by Age and Type of Road User Hospitalised  
Year ending 31 December 2006**

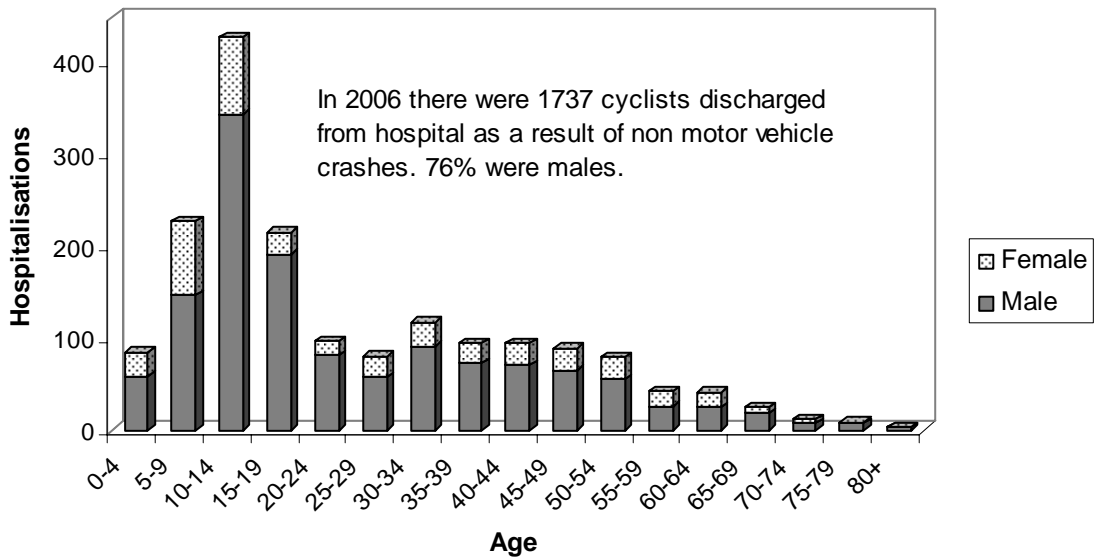
Age Group Years	Drivers	Passengers	Motor Cycle Drivers	Motor Cycle Pillions	Pedal Cyclists	Pedestrians	Other Road Users (1)	TOTAL Casualties
Under 5	-	1	-	-	-	1	-	1
5 to 9	-	7	-	-	-	4	-	5
10 to 14	-	3	2	-	3	2	4	3
15 to 19	4	4	4	-	3	11	8	5
20 to 24	3	7	6	-	6	6	5	5
25 to 29	3	3	5	-	-	3	7	4
30 to 34	4	5	7	-	3	6	5	5
35 to 39	4	5	8	-	1	15	2	5
40 to 44	3	6	7	-	3	10	8	5
45 to 49	6	8	8	-	5	7	9	7
50 to 54	5	12	9	-	5	10	7	7
55 to 59	5	8	10	-	-	14	6	7
60 to 64	8	10	-	-	-	11	9	9
65 to 69	7	7	-	-	-	17	12	9
70 to 74	11	7	-	-	-	-	5	10
75 to 79	14	11	-	-	-	21	16	15
80 and over	10	11	-	-	-	14	13	12
<b>TOTALS</b>	<b>5</b>	<b>5</b>	<b>7</b>	<b>10</b>	<b>4</b>	<b>8</b>	<b>8</b>	<b>6</b>

NOTES: (1) Includes unknown  
Average days stay are not calculated when there are fewer than 20 individuals  
SOURCE: NZHIS Ministry of Health.

**Figure 7  
Hospitalisations and Days Stay by Road User Type**



**Figure 8**  
**Number of Pedal Cyclists Hospitalised from**  
**Non Motor Vehicle Crashes**



**Figure 9**  
**Days Stay in Hospital for Pedal Cyclists injured in**  
**Non Motor Vehicle Crashes**

