

National Health Statistics for Road Users

Contents

Tables

Page

Table 1	Age and Type of Road User Hospitalised	120
Table 2	Number of Days Stay by Age and Type of Road User Hospitalised.	121
Table 3	Average Number of Days Stay by Age and Type of Road User Hospitalised	122

Figures

Figure 1	Deaths from Motor Vehicle Crashes as a Percentage of all Deaths for Selected Age Groups.	118
Figure 2	Hospital Discharges from Motor Vehicle Crashes (by Length of Stay in Hospital)	118
Figure 3	Hospital Discharges from Motor Vehicle Crashes	119
Figure 4	Total Days Stay in Hospital Resulting from Motor Vehicle Crashes	119
Figure 5	Number of Hospitalisations from Road Crashes by Age and Gender	120
Figure 6	Total Days Stay in Hospital from Road Crashes by Age and Gender	121
Figure 7	Hospitalisations and Days Stay by Road User Type	122
Figure 8	Number of Pedal Cyclists Hospitalised from Non Motor Vehicle Crashes	123
Figure 9	Days Stay in Hospital for Pedal Cyclists Injured in Non Motor Vehicle Crashes	123

Notes

1. The material presented in this section is derived from data provided by the New Zealand Health Information Service, Ministry of Health.
2. The data includes those who, as a result of a motor vehicle crash, were injured seriously enough to be admitted to hospital. (Figures 8 and 9 show data for cyclists who were injured in non-motor vehicle crashes. These casualties are not included in the Ministry of Transport's data base which records only motor vehicle crashes.) The data base includes only those discharged during the 2004 calendar year.
3. Casualties who are readmitted for further treatment are included only once in the casualty count, but their total stay in hospital is recorded.

Figure 1
Deaths from Motor Vehicle Crashes as a percentage of all Deaths for Selected Age Groups - 2000

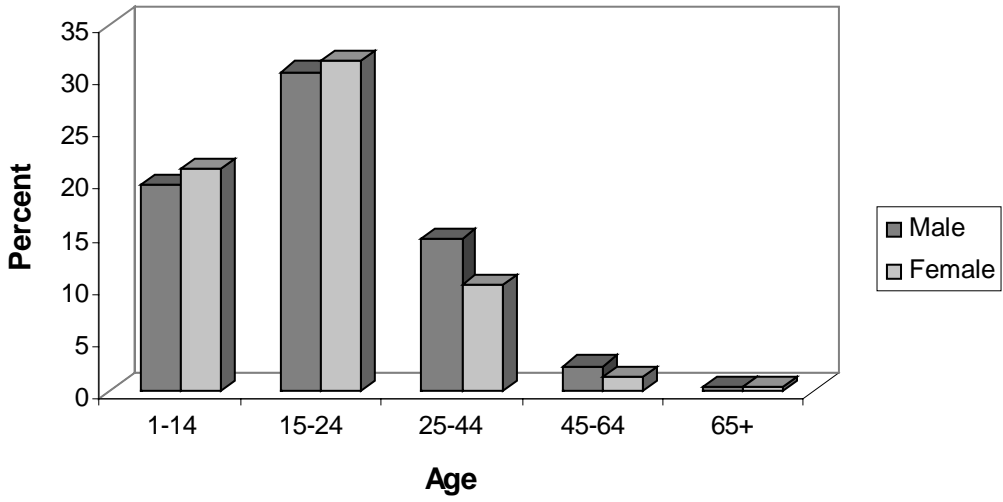


Figure 2
Hospital Discharges from Motor vehicle Crashes (by Length of Stay in Hospital)

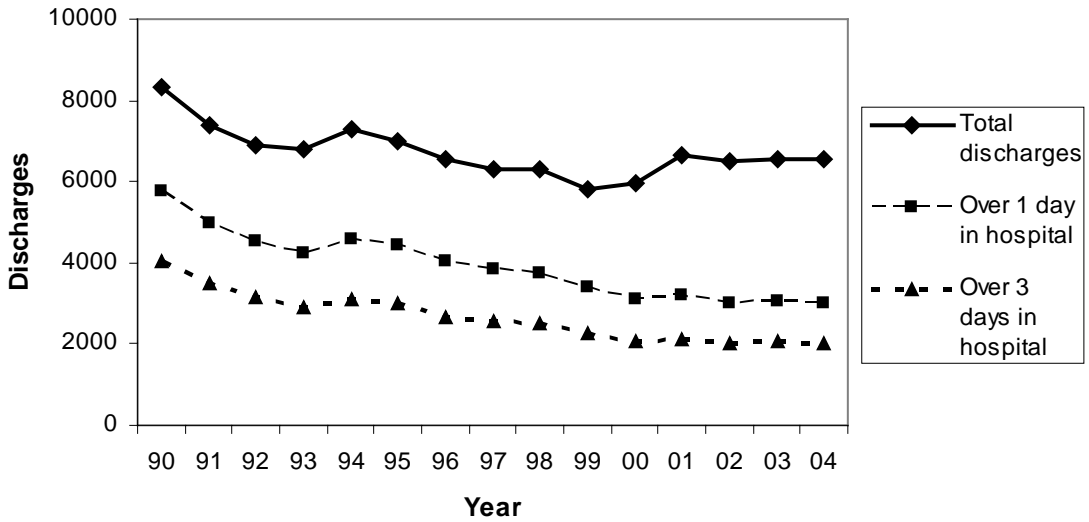


Figure 3
Hospital Discharges from Motor Vehicle Crashes
(Readmissions not Included)

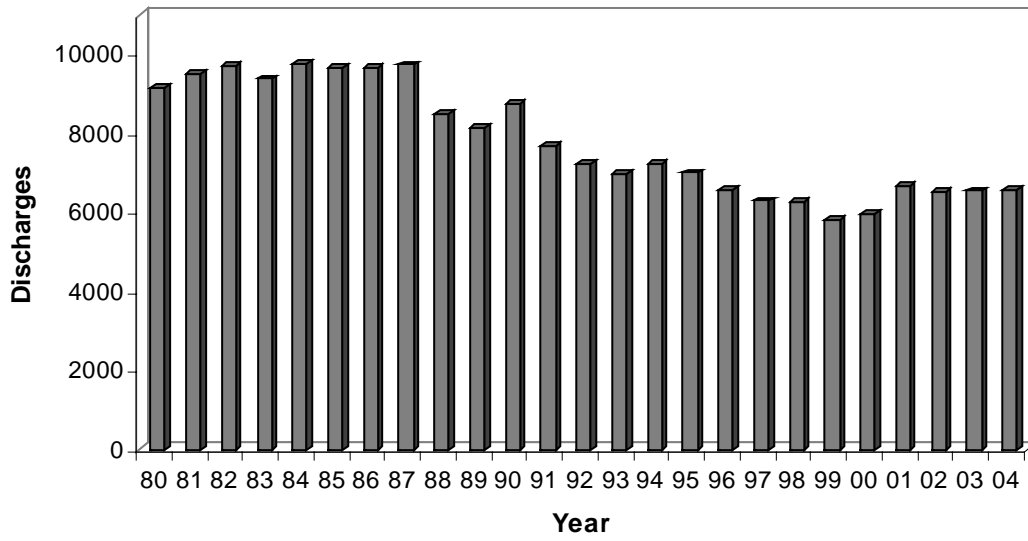


Figure 4
Total Days Stay in Hospital Resulting from
Motor Vehicle Crashes

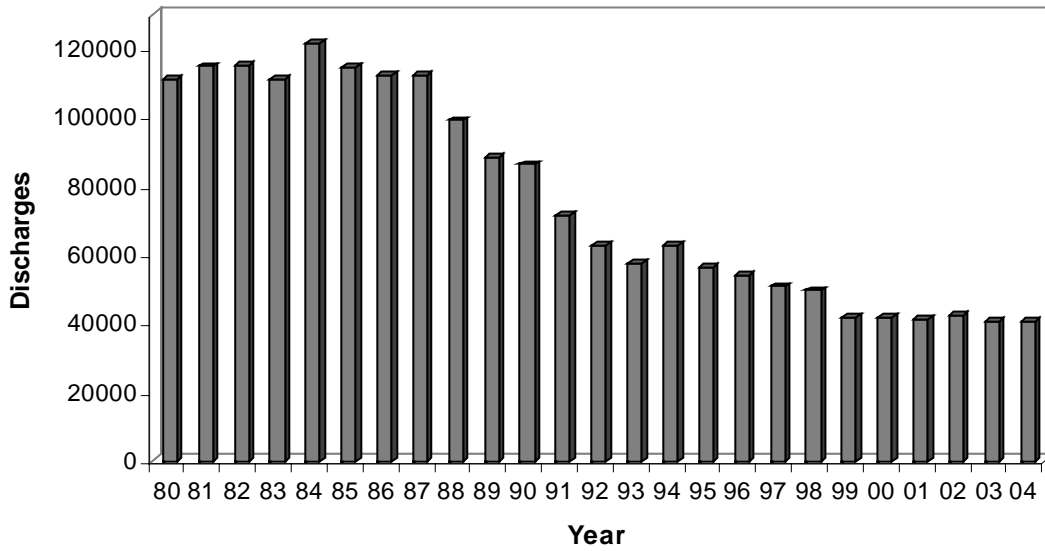


Table 1
Motor vehicle Crashes
Age and Types of Road Users Hospitalised
Year ending 31 December 2004

Age Group Years	Drivers	Passengers	Motor Cycle Drivers	Motor Cycle Pillions	Pedal Cyclists	Pedestrians	Other Road Users (1)	TOTAL Casualties
Under 5	-	73	1	1	3	48	10	136
5 to 9	1	80	5	1	31	69	13	200
10 to 14	8	100	47	4	43	66	25	293
15 to 19	420	443	109	5	19	93	79	1168
20 to 24	351	212	106	2	17	55	78	821
25 to 29	250	123	73	2	21	38	41	548
30 to 34	246	94	87	3	15	38	48	531
35 to 39	231	64	75	6	18	39	36	469
40 to 44	218	61	84	1	24	25	42	455
45 to 49	188	56	64	3	25	24	35	395
50 to 54	148	42	43	3	17	24	27	304
55 to 59	137	43	21	2	8	18	41	270
60 to 64	92	31	16	-	14	21	32	206
65 to 69	69	41	12	-	3	15	22	162
70 to 74	75	26	8	-	2	30	24	165
75 to 79	83	27	3	-	4	21	29	167
80 and over	102	47	5	-	1	31	73	259
TOTALS	2619	1563	759	33	265	655	655	6549

NOTE: (1) Includes unknown
SOURCE: NZHIS Ministry of Health.

Figure 5
Number of Hospitalisations from Road Crashes by Age and Sex

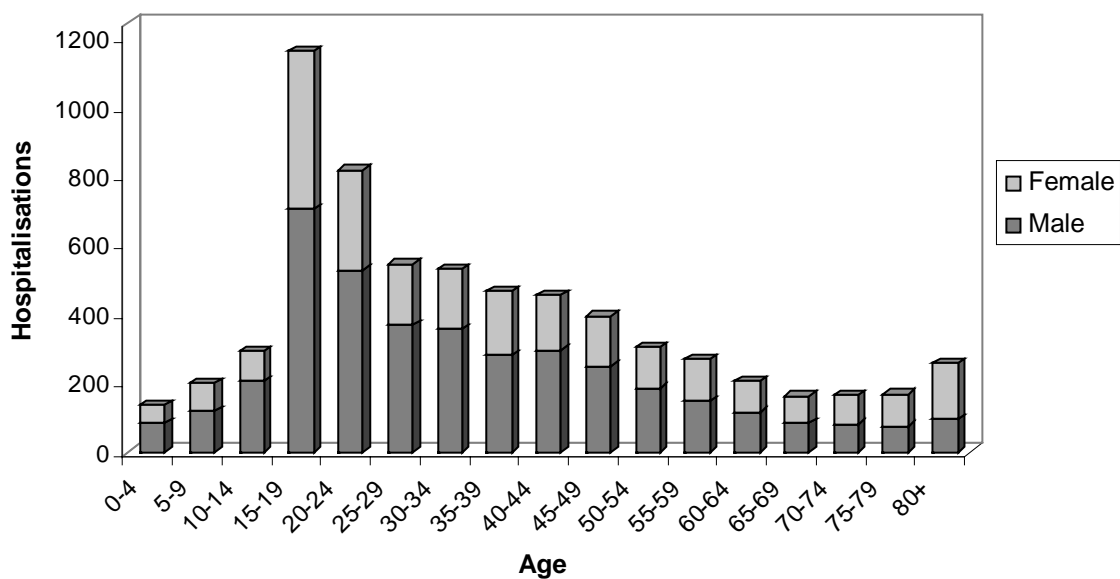


Table 2
Motor vehicle Crashes
Number of Days Stay by Age and Type of Road User Hospitalised
Year ending 31 December 2004

Age Group Years	Drivers	Passengers	Motor Cycle Drivers	Motor Cycle Pillions	Pedal Cyclists	Pedestrians	Other Road Users (1)	TOTAL Casualties
Under 5	-	257	1	1	15	93	14	381
5 to 9	0	258	11	3	126	264	80	742
10 to 14	85	295	84	5	140	280	86	975
15 to 19	2121	1929	397	19	164	453	642	5725
20 to 24	1531	841	624	16	131	189	318	3650
25 to 29	1077	690	500	6	140	358	449	3220
30 to 34	1100	321	472	5	150	340	222	2610
35 to 39	1157	439	624	25	55	238	361	2899
40 to 44	1308	433	519	27	87	111	219	2704
45 to 49	1132	218	707	18	211	181	640	3107
50 to 54	876	150	461	9	111	126	393	2126
55 to 59	888	281	91	15	122	67	393	1857
60 to 64	1152	178	59	-	205	173	312	2079
65 to 69	493	399	98	-	15	158	165	1328
70 to 74	697	349	38	-	49	467	385	1985
75 to 79	943	202	56	-	70	264	396	1931
80 and over	676	571	88	-	0	621	1086	3042
TOTALS	15236	7811	4830	149	1791	4383	6161	40361

NOTE: (1) Includes unknown
SOURCE: NZHIS Ministry of Health.

Figure 6
Total Days Stay in Hospital from Road Crashes by Age and Sex

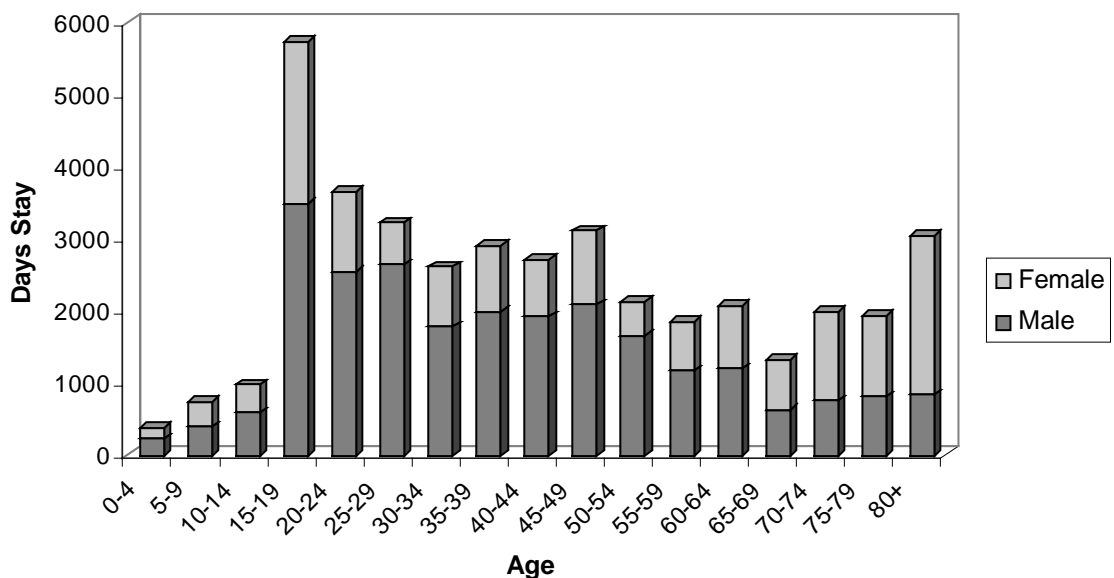


Table 3

**Motor vehicle Crashes
Average Number of Days Stay by Age and Type of Road User Hospitalised
Year ending 31 December 2004**

Age Group Years	Drivers	Passengers	Motor Cycle Drivers	Motor Cycle Pillions	Pedal Cyclists	Pedestrians	Other Road Users (1)	TOTAL Casualties
Under 5	-	4	-	-	-	2	-	3
5 to 9	-	3	-	-	4	4	-	4
10 to 14	-	3	2	-	3	4	3	3
15 to 19	5	4	4	-	-	5	8	5
20 to 24	4	4	6	-	-	3	4	4
25 to 29	4	6	7	-	7	9	11	6
30 to 34	4	3	5	-	-	9	5	5
35 to 39	5	7	8	-	-	6	10	6
40 to 44	6	7	6	-	4	4	5	6
45 to 49	6	4	11	-	8	8	18	8
50 to 54	6	4	11	-	-	5	15	7
55 to 59	6	7	4	-	-	-	10	7
60 to 64	13	6	-	-	-	8	10	10
65 to 69	7	10	-	-	-	-	8	8
70 to 74	9	13	-	-	-	16	16	12
75 to 79	11	7	-	-	-	13	14	12
80 and over	7	12	-	-	-	20	15	12
TOTALS	6	5	6	5	7	7	9	6

NOTES: (1) Includes unknown
Average days stay are not calculated when there are fewer than 20 individuals
SOURCE: NZHIS Ministry of Health.

**Figure 7
Hospitalisations and Days Stay by Road User Type**

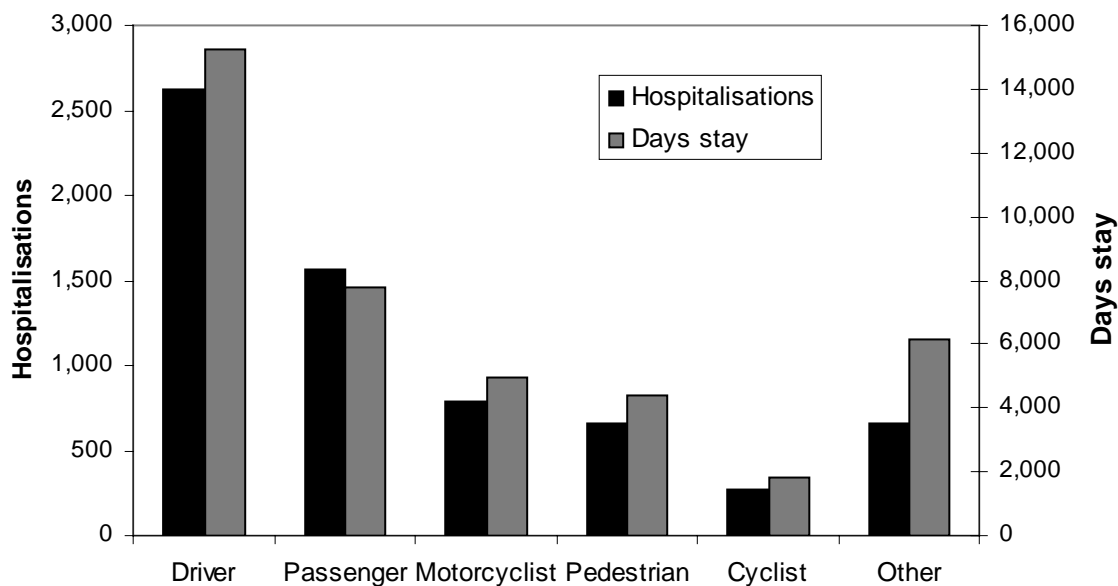


Figure 8
Number of Pedal Cyclists Hospitalised from Non Motor Vehicle Crashes

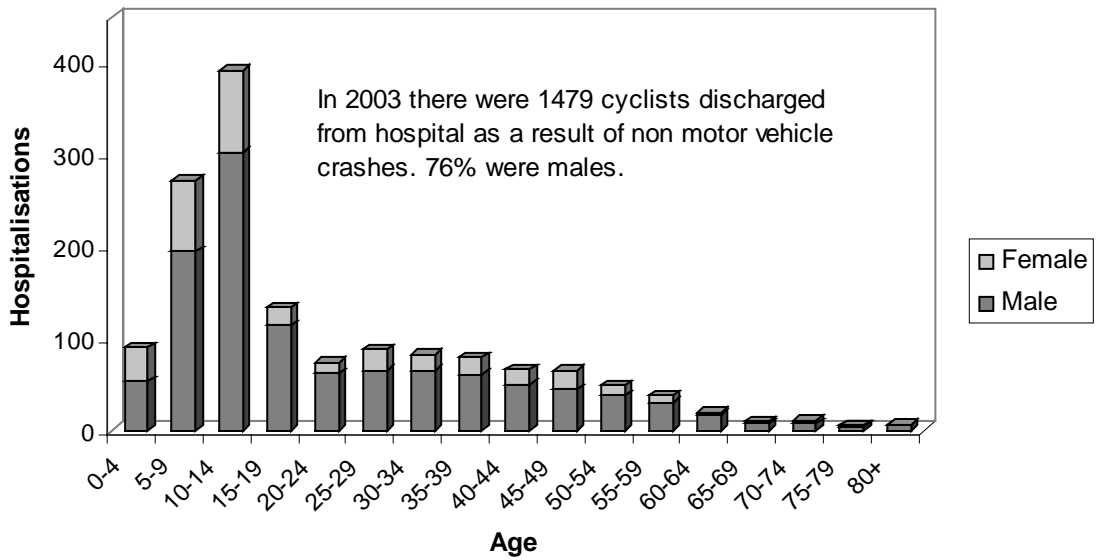


Figure 9
Days Stay in Hospital for Pedal Cyclists injured in Non Motor Vehicle Crashes

