

Section 2 Casualties and Crashes

Table 5**Age and Sex of Road Users Killed and Injured
Year ended 31 December 2006**

Age Group Years	Females		Males		Unknown		Total Casualties	
Under 5	85	(3)	102	(3)	5	(-)	192	(6)
5 to 9	132	(6)	232	(5)	4	(-)	368	(11)
10 to 14	252	(3)	337	(5)	4	(-)	593	(8)
15 to 19	1165	(20)	1681	(41)	4	(-)	2850	(61)
20 to 24	838	(9)	1299	(32)	2	(-)	2139	(41)
25 to 29	528	(4)	787	(16)	3	(-)	1318	(20)
30 to 34	494	(5)	689	(24)	2	(-)	1185	(29)
35 to 39	459	(5)	603	(21)	-	(-)	1062	(26)
40 to 44	469	(8)	596	(25)	3	(-)	1068	(33)
45 to 49	403	(12)	514	(18)	2	(-)	919	(30)
50 to 54	317	(6)	391	(15)	1	(-)	709	(21)
55 to 59	281	(2)	332	(9)	-	(-)	613	(11)
60 to 64	201	(11)	207	(6)	-	(-)	408	(17)
65 to 69	142	(6)	159	(7)	-	(-)	301	(13)
70 to 74	155	(3)	135	(8)	-	(-)	290	(11)
75 to 79	135	(9)	117	(7)	1	(-)	253	(16)
80 and over	156	(12)	145	(18)	-	(-)	301	(30)
Unknown age	256	(4)	279	(3)	70	(-)	605	(7)
TOTALS	6468	(128)	8605	(263)	101	(-)	15174	(391)

Note: The figures in brackets are the numbers killed and are not included in the adjacent totals.

Table 6**Age and Types of Road Users Killed and Injured
Year ended 31 December 2006**

Age Group Years	Drivers		Passengers		Motor Cycle Drivers		Motor Cycle Pillions		Pedal Cyclists		Pedestrians		Other Road Users(1)		Total Casualties	
Under 5	-	(-)	147	(5)	-	(-)	-	(-)	5	(-)	40	(1)	-	(-)	192	(6)
5 to 9	-	(-)	226	(7)	3	(-)	2	(-)	27	(1)	109	(3)	1	(-)	368	(11)
10 to 14	19	(-)	287	(4)	10	(-)	5	(-)	148	(2)	119	(2)	5	(-)	593	(8)
15 to 19	1516	(27)	934	(27)	169	(3)	14	(-)	83	(1)	128	(3)	6	(-)	2850	(61)
20 to 24	1355	(24)	489	(7)	138	(5)	10	(-)	62	(-)	82	(4)	3	(1)	2139	(41)
25 to 29	858	(9)	239	(6)	88	(2)	4	(-)	65	(-)	62	(3)	2	(-)	1318	(20)
30 to 34	801	(12)	154	(4)	113	(7)	9	(1)	62	(-)	44	(5)	2	(-)	1185	(29)
35 to 39	733	(15)	138	(2)	82	(6)	5	(1)	63	(-)	40	(2)	1	(-)	1062	(26)
40 to 44	715	(21)	127	(3)	102	(7)	5	(-)	75	(-)	43	(2)	1	(-)	1068	(33)
45 to 49	602	(16)	118	(6)	88	(3)	3	(1)	71	(1)	35	(3)	2	(-)	919	(30)
50 to 54	473	(13)	106	(4)	69	(1)	3	(-)	39	(1)	19	(2)	-	(-)	709	(21)
55 to 59	431	(6)	89	(2)	30	(1)	3	(-)	29	(1)	30	(1)	1	(-)	613	(11)
60 to 64	281	(11)	68	(2)	17	(-)	-	(-)	15	(-)	25	(4)	2	(-)	408	(17)
65 to 69	190	(5)	53	(3)	10	(-)	-	(-)	14	(1)	30	(4)	4	(-)	301	(13)
70 to 74	190	(7)	61	(2)	7	(-)	-	(-)	13	(-)	19	(2)	-	(-)	290	(11)
75 to 79	158	(3)	54	(10)	5	(-)	-	(-)	5	(1)	31	(1)	-	(1)	253	(16)
80 and over	195	(19)	54	(8)	1	(-)	-	(-)	4	(-)	40	(2)	7	(1)	301	(30)
Unknown age	95	(2)	369	(5)	15	(-)	7	(-)	53	(-)	64	(-)	2	(-)	605	(7)
TOTALS	8612	(190)	3713	(107)	947	(35)	70	(3)	833	(9)	960	(44)	39	(3)	15174	(391)

Notes: The figures in brackets are the numbers killed and are not included in the adjacent totals.
(1) Includes unknown.

Figure 7
Percentage of Road Deaths by Age and Sex

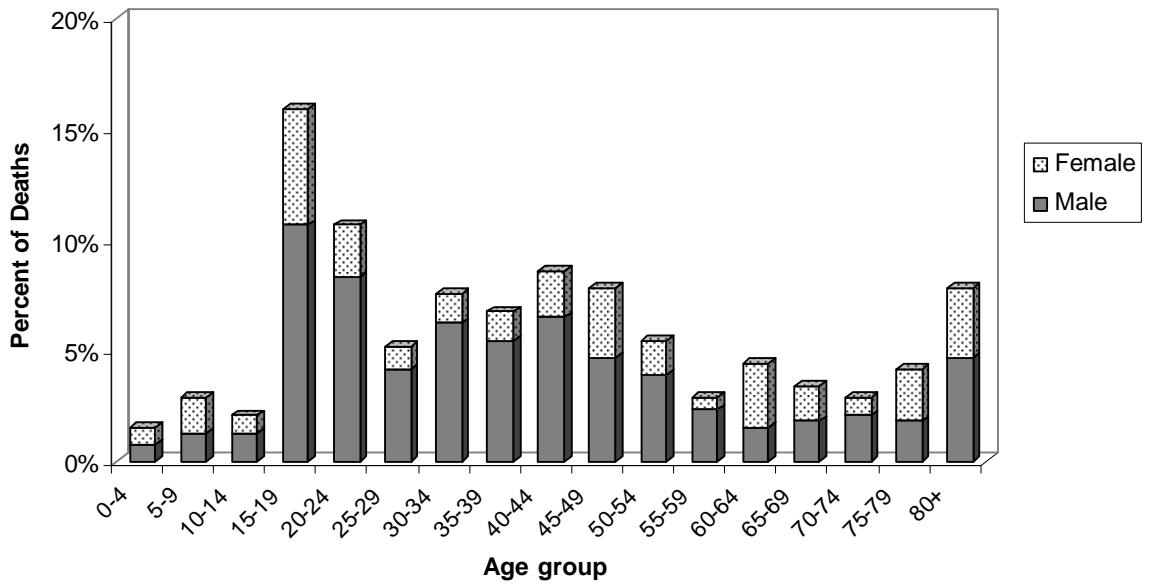


Figure 8
Percentage of Road Injuries by Age and Sex

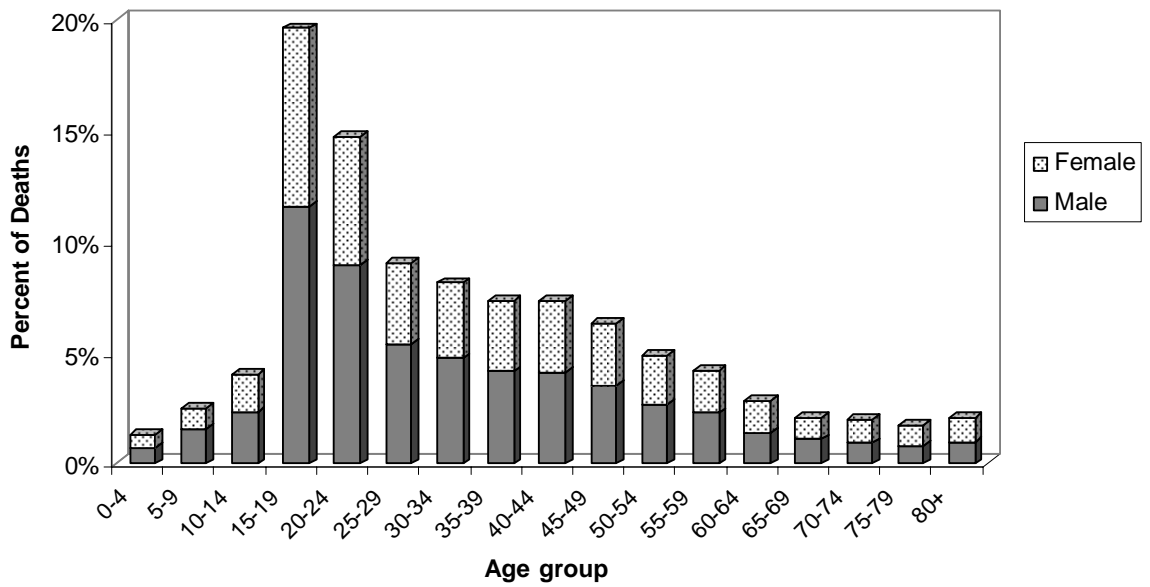


Figure 9
Percentage of Road Deaths by Age and
Road User Type

Percent of deaths

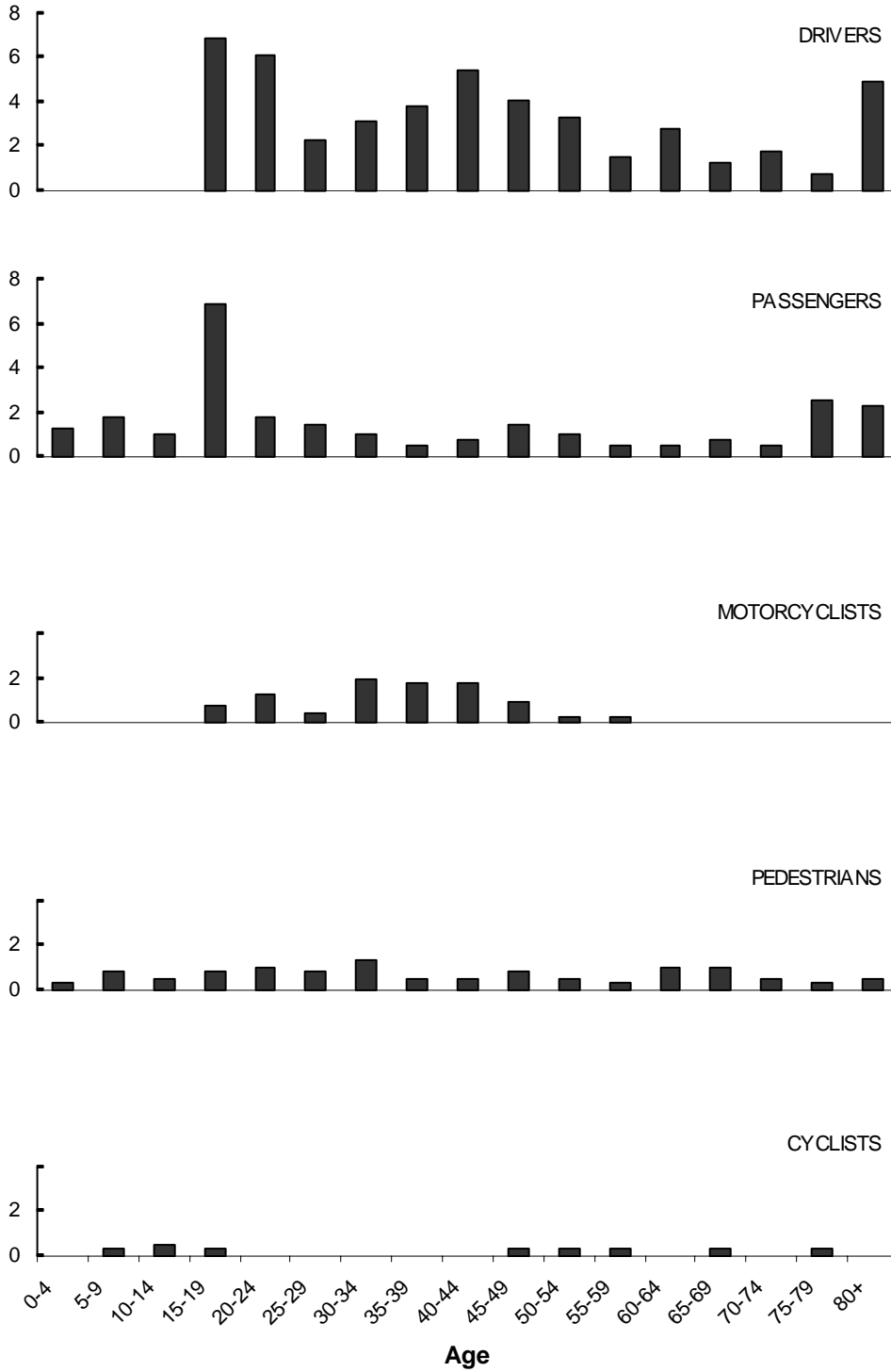


Figure 10
Percentage of Road Injuries by Age and
Road User Type

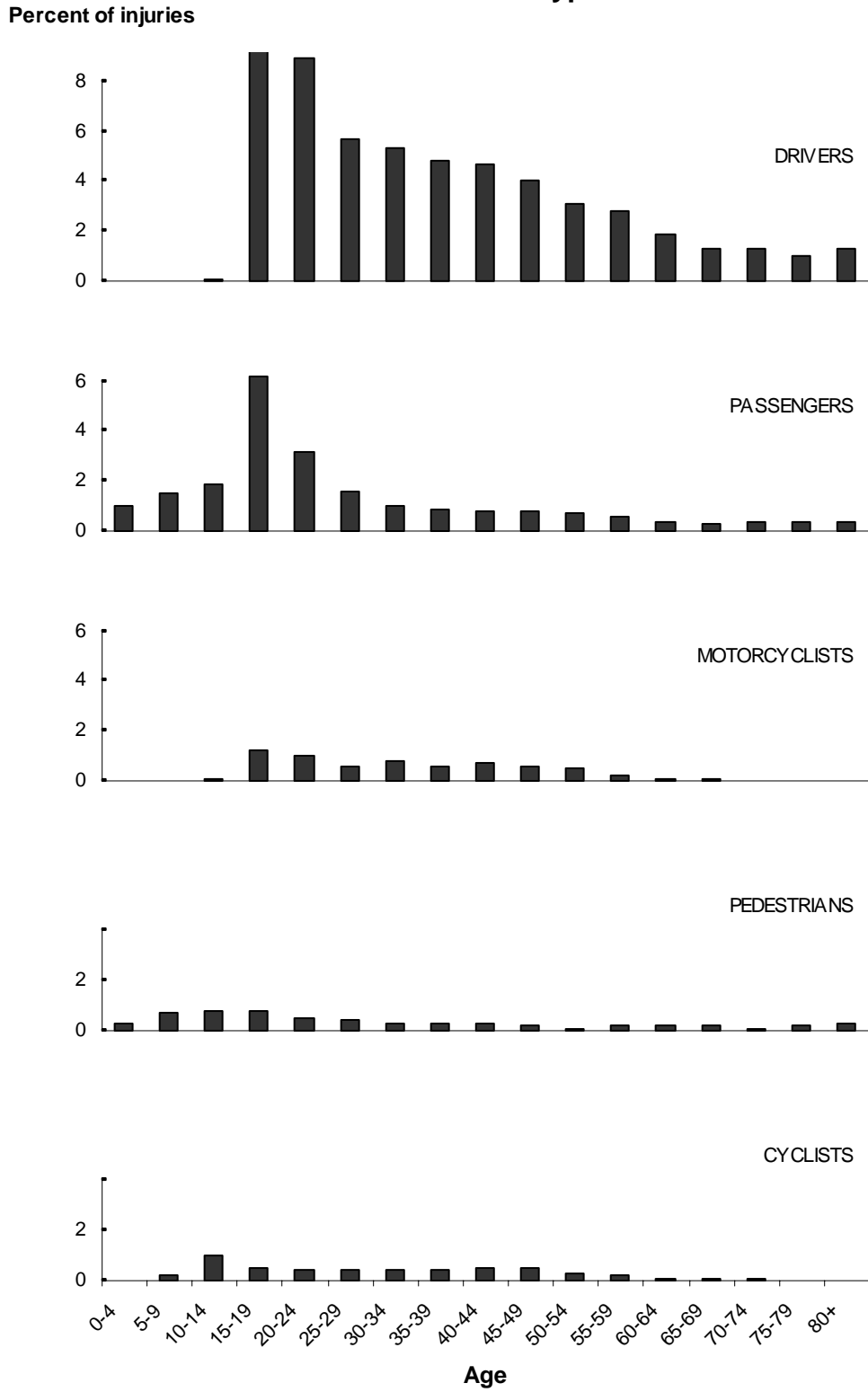


Table 7

**Type of Road User Killed and Injured
Year ended 31 December 2006**

Type of Road User	Killed	Serious Injury	Minor Injury	Totals
DRIVERS OF:				
Car	150	939	5918	7007
Taxi	1	7	45	53
SUV	11	93	582	686
Van	13	111	572	696
Truck	14	56	243	313
Bus	-	2	24	26
Motorcycle	35	360	587	982
Other	1	5	15	21
Unknown	-	-	-	-
SUBTOTAL	225	1573	7986	9784
PASSENGERS FROM:				
Car	89	462	2370	2921
Taxi	-	2	16	18
SUV	5	59	312	376
Van	12	69	293	374
Truck	1	10	66	77
Bus	-	1	48	49
Motorcycle	3	27	43	73
Other	-	2	5	7
Unknown	-	-	-	-
SUBTOTAL	110	632	3153	3895
OTHER ROAD USERS:				
Pedal Cyclists	9	149	682	840
Pedestrian	44	265	695	1004
Other & Unknown	3	10	29	42
SUBTOTAL	56	424	1406	1886
TOTAL ALL CASUALTIES	391	2629	12545	15565

**Figure 11
Type of Road User Killed and Injured**

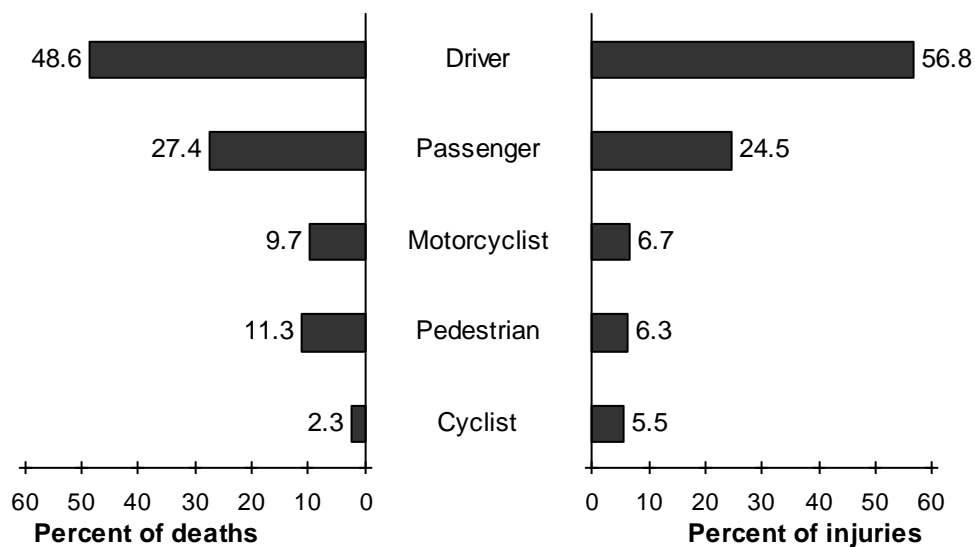


Table 8

**Type of Road Users Killed and Injured in Each Speed Limit Area
During Daylight and Darkness
Year ended 31 December 2006**

Road User	---- 50 km/h or less ----		----- 60 -- 70 km/h -----		---- 80 - 100 km/h -----		Unknown Speed Limit / Light	----- Totals -----		
	Day	Dark	Day	Dark	Day	Dark		Day	Dark	
DRIVERS OF:										
Car	2101 (11)	1244 (16)	286 (6)	164 (4)	1986 (65)	1055 (48)	21 (-)	4373 (82)	2463 (68)	
Taxi	12 (-)	29 (-)	3 (-)	- (-)	4 (1)	4 (-)	- (-)	19 (1)	33 (-)	
SUV	147 (-)	63 (-)	26 (-)	11 (1)	272 (5)	155 (5)	1 (-)	445 (5)	229 (6)	
Van	155 (-)	87 (-)	32 (-)	17 (-)	260 (7)	132 (6)	- (-)	447 (7)	236 (6)	
Truck	52 (1)	13 (-)	16 (2)	2 (-)	153 (8)	63 (3)	- (-)	221 (11)	78 (3)	
Bus	12 (-)	1 (-)	2 (-)	- (-)	11 (-)	- (-)	- (-)	25 (-)	1 (-)	
Motorcycle	404 (3)	152 (3)	47 (1)	11 (3)	265 (22)	65 (3)	3 (-)	716 (26)	228 (9)	
Other	4 (-)	2 (-)	- (-)	- (-)	12 (1)	2 (-)	- (-)	16 (1)	4 (-)	
Unknown	- (-)	- (-)	- (-)	- (-)	- (-)	- (-)	- (-)	- (-)	- (-)	
SUBTOTAL	2887 (15)	1591 (19)	412 (9)	205 (8)	2963 (109)	1476 (65)	25 (-)	6262 (133)	3272 (92)	
PASSENGERS FROM:										
Car	601 (7)	616 (6)	93 (3)	70 (3)	935 (41)	513 (29)	4 (-)	1629 (51)	1199 (38)	
Taxi	8 (-)	8 (-)	- (-)	- (-)	1 (-)	1 (-)	- (-)	9 (-)	9 (-)	
SUV	54 (-)	32 (1)	9 (-)	5 (-)	175 (2)	96 (2)	- (-)	238 (2)	133 (3)	
Van	70 (-)	51 (3)	17 (-)	7 (-)	170 (9)	47 (-)	- (-)	257 (9)	105 (3)	
Truck	7 (-)	10 (-)	9 (-)	- (-)	35 (1)	15 (-)	- (-)	51 (1)	25 (-)	
Bus	14 (-)	2 (-)	- (-)	- (-)	33 (-)	- (-)	- (-)	47 (-)	2 (-)	
Motorcycle	17 (-)	17 (-)	2 (-)	- (-)	30 (2)	3 (1)	1 (-)	49 (2)	20 (1)	
Other	3 (-)	- (-)	- (-)	- (-)	3 (-)	1 (-)	- (-)	6 (-)	1 (-)	
Unknown	- (-)	- (-)	- (-)	- (-)	- (-)	- (-)	- (-)	- (-)	- (-)	
SUBTOTAL	774 (7)	736 (10)	130 (3)	82 (3)	1382 (55)	676 (32)	5 (-)	2286 (65)	1494 (45)	
OTHER ROAD USERS:										
Pedal Cyclists	584 (3)	109 (-)	44 (-)	13 (-)	64 (6)	10 (-)	7 (-)	692 (9)	132 (-)	
Pedestrian	615 (14)	250 (8)	19 (2)	11 (3)	34 (3)	25 (14)	6 (-)	668 (19)	286 (25)	
Other & Unknown	27 (1)	11 (1)	- (1)	- (-)	- (-)	1 (-)	- (-)	27 (2)	12 (1)	
SUBTOTAL	1226 (18)	370 (9)	63 (3)	24 (3)	98 (9)	36 (14)	13 (-)	1387 (30)	430 (26)	
TOTAL	4887 (40)	2697 (38)	605 (15)	311 (14)	4443 (173)	2188 (111)	43 (-)	9935 (228)	5196 (163)	

Note: The figures in brackets are numbers killed and are not included in the adjacent totals.

Table 9
Movement Classification of Crashes and Number of Casualties
Year ended 31 December 2006

Movement Classification	---- Number of Crashes ----			----- Number of Casualties -----		
	Injury	Fatal	Killed	Serious	Minor	Total
Overtaking or lane change	374	18	22	116	413	551
Head on (not overtaking)	750	87	107	415	1149	1671
LOSS CONTROL OR OFF ROAD:						
On straight	1229	33	37	298	1289	1624
While cornering	2579	90	99	677	2865	3641
Collision with obstruction	385	6	6	92	373	471
Rear end	1107	6	6	94	1446	1546
INTERSECTIONS OR DRIVEWAYS:						
Turning versus same direction	510	6	6	82	641	729
Crossing no turns	774	10	11	156	990	1157
Crossing vehicle turning	796	14	18	136	950	1104
Vehicles merging	263	2	2	42	272	316
Right turn against	758	15	16	157	884	1057
Vehicle manoeuvring	462	7	7	83	511	601
Pedestrian crossing road	752	28	28	212	589	829
Pedestrian other	121	18	18	36	105	159
Miscellaneous	83	8	8	33	68	109
TOTALS	10943	348	391	2629	12545	15565

Note: For movement classification see note 9(a).

Figure 12
Movement Classification of Crashes

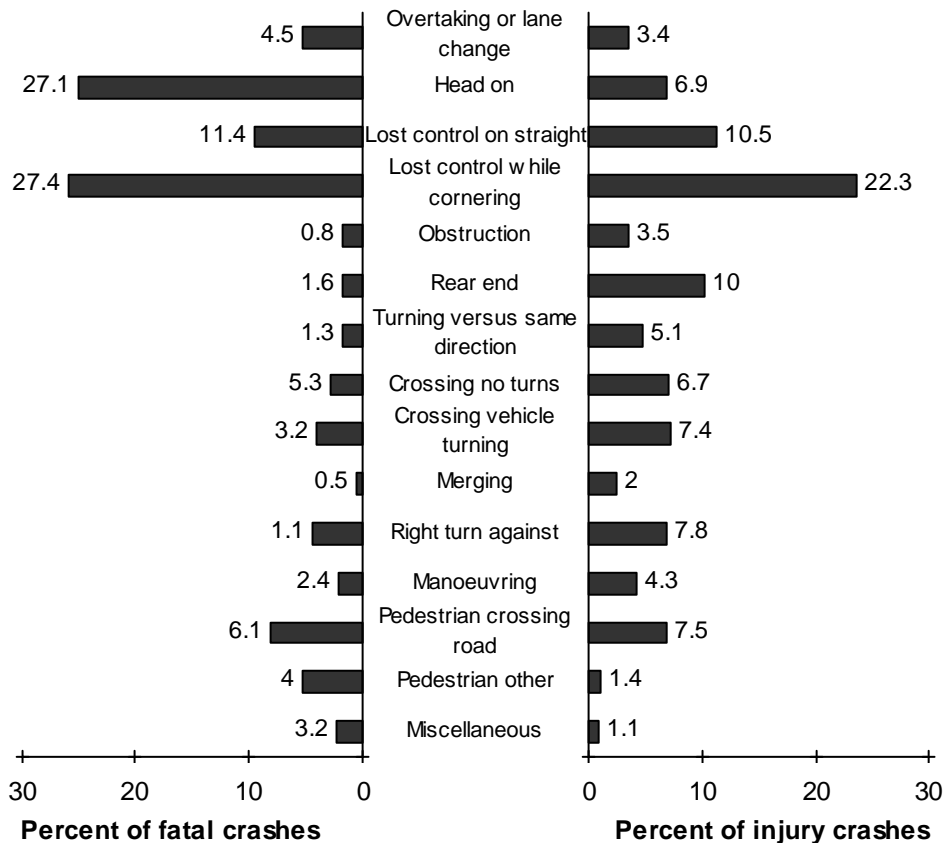


Table 10

**Casualties and Crashes Each Month
Year ended 31 December 2006**

Month	Casualties												Crashes				
	Driver		Passenger		Motor Cyclist (1)		Pedestrian		Pedal Cyclist		Other (2)		Totals	Number	Daily Average		
January	687	(19)	334	(11)	77	(2)	60	(6)	55	(1)	5	(1)	1218	(40)	841	(35)	27
February	619	(12)	281	(3)	116	(6)	69	(3)	64	(2)	2	(-)	1151	(26)	836	(26)	30
March	788	(15)	317	(9)	92	(4)	71	(2)	97	(1)	7	(-)	1372	(31)	1000	(31)	32
April	716	(11)	304	(9)	66	(5)	77	(2)	63	(-)	5	(-)	1231	(27)	898	(25)	30
May	758	(18)	281	(13)	81	(2)	104	(1)	101	(-)	5	(1)	1330	(35)	996	(34)	33
June	792	(16)	361	(9)	69	(-)	89	(5)	81	(1)	-	(1)	1392	(32)	996	(25)	32
July	731	(15)	330	(4)	76	(3)	85	(5)	59	(-)	3	(-)	1284	(27)	927	(26)	30
August	682	(20)	251	(8)	80	(3)	74	(5)	67	(-)	2	(-)	1156	(36)	866	(30)	28
September	640	(15)	247	(5)	88	(2)	91	(6)	70	(3)	2	(-)	1138	(31)	835	(28)	28
October	774	(17)	373	(17)	88	(2)	86	(4)	66	(-)	2	(-)	1389	(40)	941	(35)	30
November	698	(9)	301	(7)	87	(3)	84	(2)	63	(-)	2	(-)	1235	(21)	906	(17)	30
December	727	(23)	333	(12)	97	(6)	70	(3)	47	(1)	4	(-)	1278	(45)	901	(36)	29
TOTALS	8612	(190)	3713	(107)	1017	(38)	960	(44)	833	(9)	39	(3)	15174	(391)	10943	(348)	30

Note: The figures in brackets are the numbers killed or the number of fatal crashes and are not included in the adjacent totals.
 (1) Includes pillion passengers.
 (2) Includes unknown road user types.

**Figure 13
Percentage of Road Injuries by Month
and Type of Road User**

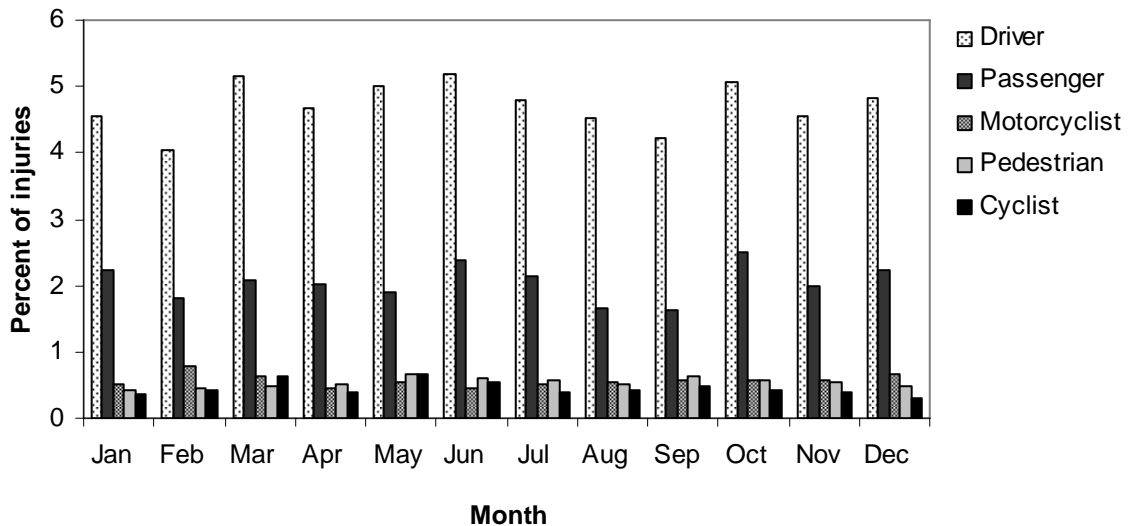


Figure 14

Crash Movement Classification Diagram

	TYPE	A	B	C	D	E	F	G	O
A	OVERTAKING AND LANE CHANGE	PULLING OUT OR CHANGING LANE TO RIGHT	HEAD ON	CUTTING IN OR CHANGING LANE TO LEFT	LOST CONTROL (OVERTAKING VEHICLE)	SIDE ROAD	LOST CONTROL (OVERTAKEN VEHICLE)	WEAVING IN HEAVY TRAFFIC	OTHER
B	HEAD ON	ON STRAIGHT	CUTTING CORNER	SWINGING WIDE	BOTH OR UNKNOWN	LOST CONTROL ON STRAIGHT	LOST CONTROL ON CURVE		OTHER
C	LOST CONTROL OR OFF ROAD (STRAIGHT ROADS)	OUT OF CONTROL ON ROADWAY	OFF ROADWAY TO LEFT	OFF ROADWAY TO RIGHT					OTHER
D	CORNERING	LOST CONTROL TURNING RIGHT	LOST CONTROL TURNING LEFT	MISSED INTERSECTION OR END OF ROAD					OTHER
E	COLLISION WITH OBSTRUCTION	PARKED VEHICLE	ACCIDENT OR BROKEN DOWN	NON-VEHICULAR OBSTRUCTIONS (INCLUDING ANIMALS)	WORKMANS VEHICLE	OPENING DOOR			OTHER
F	REAR END	SLOW VEHICLE	CROSS TRAFFIC	PEDESTRIAN	QUEUE	SIGNALS	OTHER		OTHER
G	TURNING VERSUS SAME DIRECTION	REAR OF LEFT TURNING VEHICLE	LEFT SIDE SIDE SWIPE	STOPPED OR TURNING FROM LEFT SIDE	NEAR CENTRE LINE	OVERTAKING VEHICLE	TWO TURNING		OTHER
H	CROSSING (NO TURNS)	RIGHT ANGLE (70° TO 110°)							OTHER
J	CROSSING (VEHICLE TURNING)	RIGHT TURN RIGHT SIDE		TWO TURNING					OTHER
K	MERGING	LEFT TURN IN	RIGHT TURN IN	TWO TURNING					OTHER
L	RIGHT TURN AGAINST	STOPPED WAITING TO TURN	MAKING TURN						OTHER
M	MANOEUVRING	PARKING OR LEAVING	"U" TURN	"U" TURN	DRIVEWAY MANOEUVRE	PARKING OPPOSITE	ANGLE PARKING	REVERSING ALONG ROAD	OTHER
N	PEDESTRIANS CROSSING ROAD	LEFT SIDE	RIGHT SIDE	LEFT TURN LEFT SIDE	RIGHT TURN RIGHT SIDE	LEFT TURN RIGHT SIDE	RIGHT TURN LEFT SIDE	MANOEUVRING VEHICLE	OTHER
P	PEDESTRIANS OTHER	WALKING WITH TRAFFIC	WALKING FACING TRAFFIC	WALKING ON FOOTPATH	CHILD PLAYING (TRICYCLE)	ATTENDING TO VEHICLE	ENTERING OR LEAVING VEHICLE		OTHER
Q	MISCELLANEOUS	FELL WHILE BOARDING OR ALIGHTING	FELL FROM MOVING VEHICLE	TRAIN	PARKED VEHICLE RAN AWAY	EQUESTRIAN	FELL INSIDE VEHICLE	TRAILER OR LOAD	OTHER

Table 11

Crashes Classified by Type of Movement

	TYPE	A	B	C	D	E	F	G	O	TOTAL
A	OVERTAKING OR LANE CHANGE	100	44	102	98	1	16	5	26	392
B	HEAD ON NOT OVERTAKING	140	106	157	20	93	307		14	837
C	LOST CONTROL STRAIGHT ROADS	92	756	413					1	1262
D	CORNERING	1485	1080	98					6	2669
E	COLLISION WITH OBSTRUCTION	219	14	92	5	54			7	391
F	REAR END COLLISION	170	81	62	645	108	38		9	1113
G	TURNING VERSUS SAME DIRECTION	57	71	59	234	74	10		11	516
H	CROSSING NO TURNS	782							2	784
J	CROSSING VEHICLE TURNING	769		24					17	810
K	VEHICLES MERGING	152	102	8					3	265
L	RIGHT TURN AGAINST	4	768						1	773
M	VEHICLE MANOEUVRING	43	35	194	49	9	14	16	109	469
N	PEDESTRIAN CROSSING ROAD	401	222	25	31	11	47	34	9	780
P	PEDESTRIAN OTHER	22	3	22	4	13	8		67	139
Q	MISCELLANEOUS	8	13	7	13	1	2	24	23	91

NOTE: See figure 14 for a diagrammatic representation of this table.

TOTAL CRASHES 11291

Table 12

Movement Classification of Crashes Involving Cars, SUVs, Vans, Taxis, etc.

	TYPE	A	B	C	D	E	F	G	O	TOTAL
A	OVERTAKING OR LANE CHANGE	63	35	70	81	1	15	4	18	287
		72	34	57	36	1	6	3	12	221
B	HEAD ON NOT OVERTAKING	135	88	131	15	88	272		10	739
		119	81	127	15	78	248		11	679
C	LOST CONTROL STRAIGHT ROADS	48	690	386					1	1125
		22	106	40					0	168
D	CORNERING	1298	931	86					3	2318
		93	73	16					2	184
E	COLLISION WITH OBSTRUCTION	181	11	72	5	2			2	273
		174	9	7	2	53			2	247
F	REAR END COLLISION	140	73	54	587	96	35		8	993
		116	68	58	617	104	35		7	1005
G	TURNING VERSUS SAME DIRECTION	46	19	38	206	46	7		6	368
		52	59	47	217	63	4		9	451
H	CROSSING NO TURNS	687							1	688
		632							2	634
J	CROSSING VEHICLE TURNING	582		20					4	606
		706		12					15	733
K	VEHICLES MERGING	60	73	6					1	140
		140	87	6					3	236
L	RIGHT TURN AGAINST	2	540						1	543
		4	713						0	717
M	VEHICLE MANOEUVRING	26	24	141	24	4	8	12	94	333
		40	31	175	43	7	14	12	48	370
N	PEDESTRIAN CROSSING ROAD	371	202	2	29	7	44	34	9	716
		0	2		0	0	0	0	0	2
P	PEDESTRIAN OTHER	18	2	20	3	9	7		64	123
		0	0	1	0	1	2		1	5
Q	MISCELLANEOUS	8	12	7	10	1		10	20	68
		0	0	0	5	0		9	2	16

NOTE: See figure 14 for a diagrammatic representation of this table.
 Top figure in each cell is the "KEY" vehicle (DARK ARROW). Lower figure in each cell is the second vehicle . Third, fourth, etc. vehicles are not shown.

TOTALS 9320
5668

Table 14

Movement Classification of Crashes Involving Motorcycles.

	TYPE	A	B	C	D	E	F	G	O	TOTAL
A	OVERTAKING OR LANE CHANGE	5	7	1	15		0	1	2	31
		11	3	17	0		2	0	3	36
B	HEAD ON NOT OVERTAKING	1	7	14	0	1	23			46
		2	5	4	2	0	4			17
C	LOST CONTROL STRAIGHT ROADS	39	27	13						79
		1	2	0						3
D	CORNERING	116	78	7					2	203
		0	3	1					0	4
E	COLLISION WITH OBSTRUCTION	12	1	14		1			1	29
		0	1	0		0			0	1
F	REAR END COLLISION	16	1	4	21	4	1			47
		8	9	1	10	2	0			30
G	TURNING VERSUS SAME DIRECTION	2	22	11	12	24	1			72
		0	1	2	3	0	0			6
H	CROSSING NO TURNS	27								27
		33								33
J	CROSSING VEHICLE TURNING	75		1					0	76
		12		4					1	17
K	VEHICLES MERGING	18	12							30
		2	3							5
L	RIGHT TURN AGAINST	1	106							107
		0	10							10
M	VEHICLE MANOEUVRING	5	2	34	7	3	2	1	4	58
		0	1	2	1	0	0	0	3	7
N	PEDESTRIAN CROSSING ROAD	5	6			1				12
		0	0			0				0
P	PEDESTRIAN OTHER	1			1					2
		0			0					0
Q	MISCELLAN- EOUS		1						2	3
			0						0	0

NOTE: See figure 14 for a diagrammatic representation of this table.
Top figure in each cell is the "KEY" vehicle (DARK ARROW). Lower figure in
each cell is the second vehicle . Third, fourth, etc. vehicles are not shown.

TOTALS **822**
169

Table 16

**Movement Classification of Injury Crashes on Open and Urban Roads
Year ended 31 December 2006**

Movement Classification	----- Urban Roads -----			----- Rural Roads -----			Unknown Area	Total
	Number of Injury Crashes	As a % of all Injury Crashes	Number During Darkness	Number of Injury Crashes	As a % of all Injury Crashes	Number During Darkness	Number of Injury Crashes	Number of Injury Crashes
Overtaking or lane change	144	1.3	35	230	2.1	60	-	374
Head on (not overtaking)	296	2.7	121	453	4.1	118	1	750
LOSS CONTROL OR OFF ROAD:								
On straight	496	4.5	269	726	6.6	298	7	1229
While cornering	900	8.2	543	1677	15.3	675	2	2579
Collision with obstruction	268	2.4	128	113	1	79	4	385
Rear end	652	6	121	448	4.1	94	7	1107
INTERSECTIONS OR DRIVEWAYS:								
Turning versus same direction	363	3.3	66	146	1.3	19	1	510
Crossing no turns	694	6.3	186	78	0.7	15	2	774
Crossing vehicle turning	626	5.7	145	170	1.6	41	-	796
Vehicles merging	221	2	47	41	0.4	5	1	263
Right turn against	646	5.9	194	110	1	27	2	758
Vehicle manoeuvring	388	3.5	82	70	0.6	21	4	462
Pedestrian crossing road	729	6.7	199	22	0.2	8	1	752
Pedestrian other	96	0.9	35	21	0.2	10	4	121
Miscellaneous	42	0.4	13	40	0.4	12	1	83
TOTALS	6561	60	2184	4345	39.7	1482	37	10943

Note: Fatal crashes are not included in this table (see Table 17)

Table 17

**Movement Classification of Fatal Crashes on Open and Urban Roads
Year ended 31 December 2006**

Movement Classification	----- Urban Roads -----			----- Rural Roads -----			Unknown Area	Total
	Number of Fatal Crashes	As a % of all Fatal Crashes	Number During Darkness	Number of Fatal Crashes	As a % of all Fatal Crashes	Number During Darkness	Number of Fatal Crashes	Number of Fatal Crashes
Overtaking or lane change	5	1.4	1	13	3.7	3	-	18
Head on (not overtaking)	9	2.6	3	78	22.4	22	-	87
LOSS CONTROL OR OFF ROAD:								
On straight	8	2.3	5	25	7.2	14	-	33
While cornering	28	8	21	62	17.8	36	-	90
Collision with obstruction	2	0.6	2	4	1.1	3	-	6
Rear end	3	0.9	1	3	0.9	-	-	6
INTERSECTIONS OR DRIVEWAYS:								
Turning versus same direction	3	0.9	-	3	0.9	-	-	6
Crossing no turns	2	0.6	1	8	2.3	1	-	10
Crossing vehicle turning	1	0.3	-	13	3.7	3	-	14
Vehicles merging	2	0.6	1	-	-	-	-	2
Right turn against	6	1.7	1	9	2.6	1	-	15
Vehicle manoeuvring	2	0.6	-	5	1.4	-	-	7
Pedestrian crossing road	22	6.3	6	6	1.7	4	-	28
Pedestrian other	8	2.3	6	10	2.9	10	-	18
Miscellaneous	2	0.6	1	6	1.7	1	-	8
TOTALS	103	29.6	49	245	70.4	98	-	348

Note: For movement classification see note 9(a).
For area classification see note 11.

Table 18
Injury Crashes by Time of Day and Day of Week
Year ended 31 December 2006

Time of Day	Monday	Tuesday	Wednesday	Thursday	Friday	Saturday	Sunday	Totals
Midnight to 12.59am	17	19	17	25	22	71	77	248
1am to 1.59am	19	17	17	27	27	60	66	233
2am to 2.59am	8	11	11	17	27	54	48	176
3am to 3.59am	12	6	5	15	20	36	41	135
4am to 4.59am	15	7	9	12	22	28	44	137
5am to 5.59am	17	16	16	18	18	31	32	148
6am to 6.59am	29	44	46	48	37	44	40	288
7am to 7.59am	69	70	102	77	76	44	37	475
8am to 8.59am	119	107	136	111	110	48	41	672
9am to 9.59am	65	71	73	63	64	65	57	458
10am to 10.59am	61	68	48	68	66	87	54	452
11am to 11.59am	69	61	67	71	70	88	77	503
noon to 12.59pm	74	83	72	62	111	109	88	599
1pm to 1.59pm	89	78	80	73	96	69	90	575
2pm to 2.59pm	77	74	82	87	117	83	101	621
3pm to 3.59pm	129	144	144	122	152	111	97	899
4pm to 4.59pm	118	127	137	130	138	109	106	865
5pm to 5.59pm	104	133	143	156	169	90	84	879
6pm to 6.59pm	68	66	119	103	102	106	62	626
7pm to 7.59pm	64	64	59	64	86	81	63	481
8pm to 8.59pm	44	55	48	59	72	58	47	383
9pm to 9.59pm	35	36	44	63	71	66	30	345
10pm to 10.59pm	36	41	32	41	64	74	31	319
11pm to 11.59pm	21	25	24	35	77	60	18	260
Unknown time	30	18	20	23	26	21	28	166
TOTALS	1389	1441	1551	1570	1840	1693	1459	10943

Note: Fatal crashes are not included in this table (see Table 19)

Figure 15
Injury Crashes by Time of Day and Day of Week

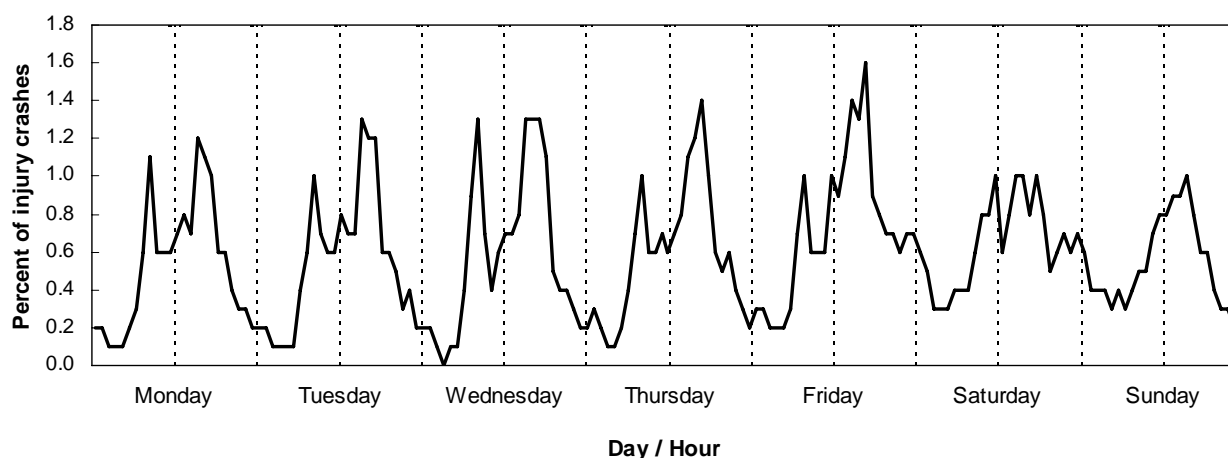


Table 19
Fatal Crashes by Time of Day and Day of Week
Year ended 31 December 2006

Time of Day	Monday	Tuesday	Wednesday	Thursday	Friday	Saturday	Sunday	Totals
Midnight to 12.59am	-	3	1	-	1	-	5	10
1am to 1.59am	-	3	1	-	1	-	5	10
2am to 2.59am	-	1	1	-	1	5	5	13
3am to 3.59am	-	1	3	2	1	1	4	12
4am to 4.59am	-	-	-	3	-	-	5	8
5am to 5.59am	-	1	-	-	-	-	4	5
6am to 6.59am	-	-	-	3	2	5	-	10
7am to 7.59am	1	2	3	2	1	1	2	12
8am to 8.59am	4	3	1	4	1	1	-	14
9am to 9.59am	-	3	3	3	3	2	2	16
10am to 10.59am	3	3	1	1	-	3	2	13
11am to 11.59am	6	2	3	2	1	6	1	21
noon to 12.59am	1	-	-	3	2	4	5	15
1pm to 1.59pm	3	1	3	3	9	3	5	27
2pm to 2.59pm	1	1	1	2	4	3	3	15
3pm to 3.59pm	1	2	2	1	7	3	2	18
4pm to 4.59pm	5	1	2	4	5	3	2	22
5pm to 5.59pm	1	2	1	5	4	2	3	18
6pm to 6.59pm	3	2	3	-	4	4	3	19
7pm to 7.59pm	-	4	6	2	2	3	2	19
8pm to 8.59pm	1	1	2	2	4	3	-	13
9pm to 9.59pm	2	1	-	4	1	2	-	10
10pm to 10.59pm	1	3	-	-	3	4	2	13
11pm to 11.59pm	-	-	1	4	6	2	-	13
Unknown time	1	-	-	-	-	1	-	2
TOTALS	34	40	38	50	63	61	62	348

Figure 16
Fatal Crashes by Time of Day and Day of Week

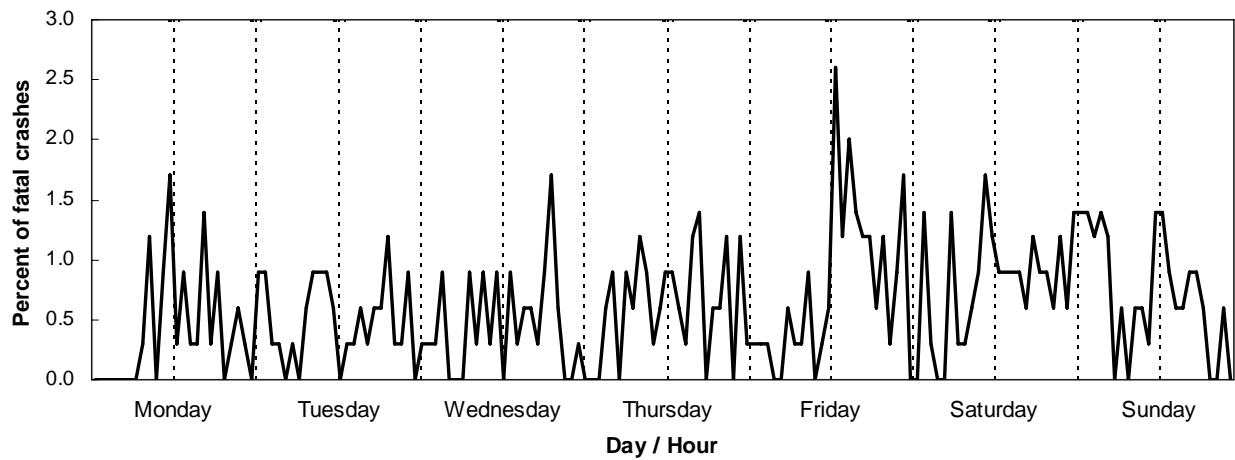


Table 20**Light and Weather Conditions Prevailing When Injury Crashes Occurred
Year ended 31 December 2006**

Light Conditions	Fine	Heavy Rain	Light Rain	Mist	Snow	Unknown	Total
BRIGHT SUN	4003	4	24	1	4	2	4038
OVERCAST	1935	72	918	285	14	6	3230
TWILIGHT:							
Street lights on	134	5	23	10	-	-	172
Street lights off	177	3	13	7	-	1	201
No street lights	150	5	32	10	-	1	198
Not stated	-	-	-	-	-	-	-
TWILIGHT SUBTOTAL	461	13	68	27	-	2	571
DARK:							
Street lights on	1507	38	382	88	3	7	2025
Street lights off	33	5	11	4	-	-	53
No street lights	729	52	177	52	10	4	1024
Not stated	-	-	-	-	-	-	-
DARK SUBTOTAL	2269	95	570	144	13	11	3102
UNKNOWN LIGHT	2	-	-	-	-	-	2
TOTAL	8670	184	1580	457	31	21	10943

Note: Fatal crashes are not included in this table (see Table 21)

Table 21**Light and Weather Conditions Prevailing When Fatal Crashes Occurred
Year ended 31 December 2006**

Light Conditions	Fine	Heavy Rain	Light Rain	Mist	Snow	Unknown	Total
BRIGHT SUN	112	1	-	1	-	-	114
OVERCAST	59	-	17	10	1	-	87
TWILIGHT:							
Street lights on	1	-	-	-	-	-	1
Street lights off	1	-	-	-	-	-	1
No street lights	5	1	2	-	-	-	8
Not stated	-	-	-	-	-	-	-
TWILIGHT SUBTOTAL	7	1	2	-	-	-	10
DARK:							
Street lights on	43	1	11	3	-	-	58
Street lights off	2	-	2	-	-	-	4
No street lights	64	3	6	2	-	-	75
Not stated	-	-	-	-	-	-	-
DARK SUBTOTAL	109	4	19	5	-	-	137
UNKNOWN LIGHT	-	-	-	-	-	-	-
TOTAL	287	6	38	16	1	-	348

Table 22

**Objects Collided With in Injury Crashes on Open and Urban Roads
Year ended 31 December 2006**

Objects Struck	----- URBAN ROADS -----			----- OPEN ROADS -----			UNKNOWN AREA	Total Number of Objects
	Number of Objects	As a % of all Objects	Number During Darkness	Number of Objects	As a % of all Objects	Number During Darkness	Number of Objects	
Driven or accompanied animals	1	0	-	1	0	1	-	2
Bridge or approach rails	25	0.4	12	79	1.3	40	-	104
Upright cliff or bank	130	2.1	73	669	10.7	260	1	800
Debris on the road	3	0	1	24	0.4	16	1	28
Over bank or cliff	83	1.3	46	233	3.7	83	1	317
Fence letterbox hoarding etc	406	6.5	244	651	10.4	256	3	1060
Guard rail	58	0.9	35	239	3.8	110	-	297
House or building	130	2.1	62	8	0.1	2	1	139
Traffic island or median	103	1.6	62	19	0.3	13	1	123
Phone boxes bus shelters etc	59	0.9	28	8	0.1	3	-	67
Kerb	137	2.2	83	22	0.4	12	-	159
Slip washout or flood	3	0	1	6	0.1	4	-	9
Parked vehicle	582	9.3	280	32	0.5	15	7	621
Train	4	0.1	1	-	-	-	-	4
Pole or post	372	5.9	198	266	4.3	115	-	638
Broken down or accident vehicles	72	1.2	24	27	0.4	11	4	103
Road works signs or drums	4	0.1	3	3	0	3	-	7
Traffic sign or signals	114	1.8	71	116	1.9	48	-	230
Tree	308	4.9	181	375	6	158	2	685
Stray or wild animals	1	0	1	67	1.1	60	-	68
Ditch	59	0.9	34	581	9.3	221	1	641
Into water river or sea	22	0.4	12	54	0.9	18	-	76
Other	38	0.6	25	37	0.6	17	1	76
TOTALS	2714	43.4	1477	3517	56.2	1466	23	6254

Note: For area classification see note 11.
Fatal crashes are not included in this table (see table 23).

Table 23

**Objects Collided With in Fatal Crashes on Open and Urban Roads
Year ended 31 December 2006**

Objects Struck	----- URBAN ROADS -----			----- OPEN ROADS -----			UNKNOWN AREA	Total Number of Objects
	Number of Objects	As a % of all Objects	Number During Darkness	Number of Objects	As a % of all Objects	Number During Darkness	Number of Objects	
Driven or accompanied animals	-	-	-	-	-	-	-	-
Bridge or approach rails	1	0.4	1	9	3.7	5	-	10
Upright cliff or bank	5	2	4	14	5.7	9	-	19
Debris on the road	-	-	-	-	-	-	-	-
Over bank or cliff	3	1.2	-	21	8.5	10	-	24
Fence letterbox hoarding etc	13	5.3	9	35	14.2	13	-	48
Guard rail	1	0.4	1	8	3.3	3	-	9
House or building	1	0.4	1	2	0.8	1	-	3
Traffic island or median	1	0.4	1	-	-	-	-	1
Phone boxes bus shelters etc	2	0.8	1	-	-	-	-	2
Kerb	4	1.6	2	1	0.4	1	-	5
Slip washout or flood	-	-	-	-	-	-	-	-
Parked vehicle	4	1.6	3	1	0.4	-	-	5
Train	-	-	-	2	0.8	-	-	2
Pole or post	13	5.3	10	11	4.5	8	-	24
Broken down or accident vehicles	-	-	-	2	0.8	2	-	2
Road works signs or drums	-	-	-	-	-	-	-	-
Traffic sign or signals	2	0.8	1	6	2.4	2	-	8
Tree	13	5.3	8	30	12.2	16	-	43
Stray or wild animals	1	0.4	1	-	-	-	-	1
Ditch	1	0.4	1	26	10.6	12	-	27
Into water river or sea	1	0.4	-	10	4.1	4	-	11
Other	-	-	-	2	0.8	1	-	2
TOTALS	66	26.8	44	180	73.2	87	-	246

Note: For area classification see note 11.

Table 24

**Injury Crashes by Road Feature on Open and Urban Roads
Year ended 31 December 2006**

Road Feature	----- URBAN AREAS -----			----- RURAL AREAS -----			UNKNOWN AREA	Total Number of Injury Crashes
	Number of Injury Crashes	As a % of all Injury Crashes	Number During Darkness	Number of Injury Crashes	As a % of all Injury Crashes	Number During Darkness	Number of Injury Crashes	
INTERSECTIONS								
Controlled by:								
Traffic signals	799	7.3	320	38	0.3	18	2	839
Stop sign	477	4.4	116	165	1.5	44	1	643
Roundabout	288	2.6	81	23	0.2	9	1	312
Other Give Way sign	1171	10.7	311	282	2.6	81	1	1454
Pointsman or School Patrol	2	0	-	-	-	-	-	2
Uncontrolled	769	7	257	212	1.9	66	3	984
SUBTOTAL	3506	32	1085	720	6.6	218	8	4234
NON-INTERSECTIONS								
Bridge	36	0.3	17	121	1.1	48	-	157
Railway Crossing	7	0.1	2	6	0.1	1	-	13
Motorway on-off ramp	2	0	1	24	0.2	6	1	27
Raised islands	242	2.2	79	120	1.1	42	1	363
Straight road	1990	18.2	623	1375	12.6	471	23	3388
Easy curve	375	3.4	167	786	7.2	284	2	1163
Moderate curve	316	2.9	162	962	8.8	335	2	1280
Severe curve	87	0.8	48	231	2.1	77	-	318
Not stated	-	-	-	-	-	-	-	-
SUBTOTAL	3055	27.9	1099	3625	33.1	1264	29	6709
TOTAL	6561	60	2184	4345	39.7	1482	37	10943

Note: For urban/open road classification see note 11.
Fatal crashes are not included in this table (see table 25).

Table 25

**Fatal Crashes by Road Feature on Open and Urban Roads
Year ended 31 December 2006**

Road Feature	----- URBAN AREAS -----		----- RURAL AREAS -----			UNKNOWN AREA		Total Number of Fatal Crashes
	Number of Fatal Crashes	As a % of all Fatal Crashes	Number During Darkness	Number of Fatal Crashes	As a % of all Fatal Crashes	Number During Darkness	Number of Fatal Crashes	
INTERSECTIONS								
Controlled by:								
Traffic signals	4	1.1	1	2	0.6	1	-	6
Stop sign	5	1.4	2	12	3.4	3	-	17
Roundabout	2	0.6	-	-	-	-	-	2
Other Give Way sign	10	2.9	4	17	4.9	7	-	27
Pointsman or School Patrol	-	-	-	-	-	-	-	-
Uncontrolled	8	2.3	4	6	1.7	4	-	14
SUBTOTAL	29	8.3	11	37	10.6	15	-	66
NON-INTERSECTIONS								
Bridge	1	0.3	-	10	2.9	5	-	11
Railway Crossing	-	-	-	2	0.6	-	-	2
Motorway on-off ramp	-	-	-	-	-	-	-	-
Raised islands	4	1.1	3	1	0.3	1	-	5
Straight road	36	10.3	16	78	22.4	30	-	114
Easy curve	20	5.7	9	52	14.9	23	-	72
Moderate curve	12	3.4	9	56	16.1	21	-	68
Severe curve	1	0.3	1	9	2.6	3	-	10
Not stated	-	-	-	-	-	-	-	-
SUBTOTAL	74	21.3	38	208	59.8	83	-	282
TOTAL	103	29.6	49	245	70.4	98	-	348

Note: For urban/open road classification see note 11.

Figure 17
Factors Probably Contributing to Crashes

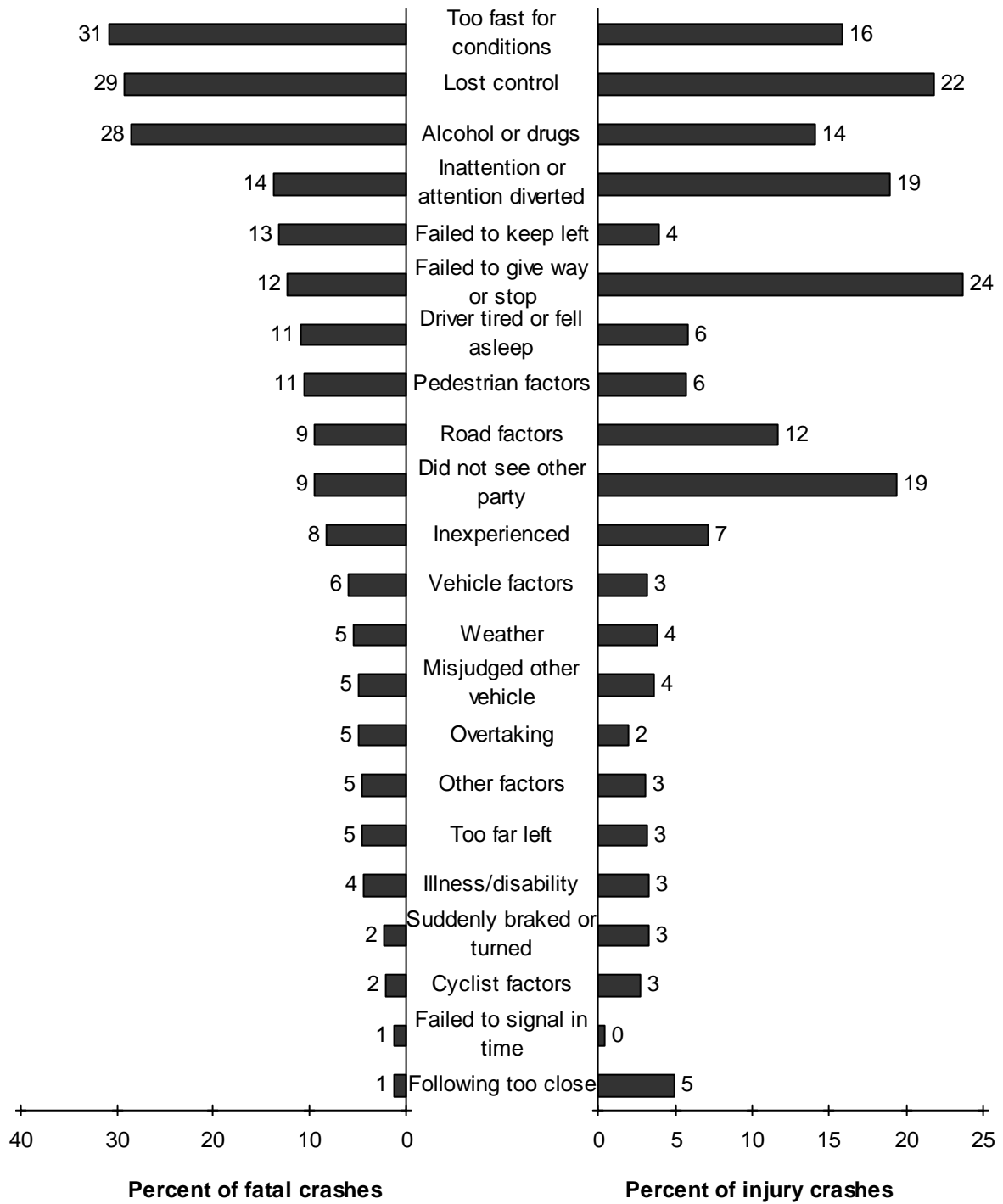


Table 26

**Factors Probably Contributing to Crashes
Year ended 31 December 2006**

Factors	Motor Vehicle		Motor Cycle		Pedal Cycle		Totals	
DRIVER/RIDER CONTROL FACTORS								
Alcohol or Drugs								
Alcohol suspected	418	(15)	23	(1)	-	(-)	441	(16)
Any test negative	331	(28)	16	(3)	-	(-)	347	(31)
All tests positive or refused	864	(64)	35	(3)	-	(-)	899	(67)
Result of test unknown	158	(10)	17	(2)	-	(-)	175	(12)
Visibly intoxicated non-driver (pedestrian/cyclist/passenger)	6	(2)	-	(-)	18	(-)	24	(2)
Not suspected and test negative	-	(91)	-	(21)	-	(-)	-	(112)
Drugs suspected	40	(6)	3	(-)	-	(-)	43	(6)
Drugs proven	11	(4)	-	(-)	-	(-)	11	(4)
Other	1	(-)	-	(-)	-	(-)	1	(-)
Totals	1829	(220)	94	(30)	18	(-)	1941	(250)
Too fast for Conditions								
Cornering	1004	(64)	73	(12)	3	(-)	1080	(76)
On straight	222	(21)	10	(2)	1	(-)	233	(23)
To give way at intersection	72	(-)	2	(1)	3	(-)	77	(1)
Approaching railway crossing	2	(1)	-	(-)	-	(-)	2	(1)
Passing stationary school bus	1	(-)	-	(-)	-	(-)	1	(-)
At temporary speed limit	20	(1)	-	(-)	-	(-)	20	(1)
At crash or emergency	-	(-)	-	(-)	-	(-)	-	(-)
Other	321	(9)	18	(3)	3	(-)	342	(12)
Totals	1642	(96)	103	(18)	10	(-)	1755	(114)
Failed to keep left								
Swung wide on bend	177	(17)	13	(1)	2	(-)	192	(18)
Swung wide at an intersection	17	(-)	5	(-)	1	(-)	23	(-)
Cutting corner								
- on bend	77	(8)	7	(-)	2	(-)	86	(8)
- at an intersection	16	(-)	2	(-)	2	(-)	20	(-)
On straight	79	(16)	1	(-)	1	(-)	81	(16)
Vehicle crossed raised median	5	(-)	-	(-)	-	(-)	5	(-)
Driving or riding abreast (cyclists more than 2 abreast)	-	(-)	-	(-)	3	(1)	3	(1)
Wandering or wobbling	3	(2)	2	(-)	4	(1)	9	(3)
Too far left/right	335	(16)	14	(-)	9	(-)	358	(16)
Other	42	(5)	2	(-)	6	(-)	50	(5)
Totals	751	(64)	46	(1)	30	(2)	827	(67)

(CONTINUED)

NOTE: The figures in brackets are the number of factors in fatal crashes and are not included in the adjacent totals.
See note 10.

Table 26

**Factors Probably Contributing to Crashes
Year ended 31 December 2006**

Factors	Motor Vehicle		Motor Cycle		Pedal Cycle		Totals	
DRIVER/RIDER CONTROL FACTORS (continued)								
Lost control								
When turning	793	(48)	64	(8)	2	(-)	859	(56)
Under heavy braking	214	(2)	38	(2)	1	(-)	253	(4)
Under heavy acceleration	106	(2)	8	(-)	-	(-)	114	(2)
While returning to seal from unsealed shoulder	244	(14)	4	(-)	-	(-)	248	(14)
Due to road conditions	439	(10)	65	(1)	1	(-)	505	(11)
Due to vehicle fault	77	(3)	14	(-)	2	(1)	93	(4)
Avoiding another vehicle, pedestrian, party or obstacle on roadway	122	(4)	24	(-)	2	(-)	148	(4)
On unsealed road	62	(2)	1	(-)	-	(-)	63	(2)
End of seal	5	(1)	1	(-)	-	(-)	6	(1)
Other	241	(6)	24	(2)	7	(1)	272	(9)
Totals	2303	(92)	243	(13)	15	(2)	2561	(107)
Failed to signal in time								
When moving to left, pulling over to left	1	(-)	-	(-)	-	(-)	1	(-)
When turning left	5	(-)	-	(-)	-	(-)	5	(-)
When pulling out or moving to the right	2	(-)	-	(-)	2	(1)	4	(1)
When turning right	10	(-)	-	(-)	-	(-)	10	(-)
Incorrect signal	26	(2)	1	(1)	-	(-)	27	(3)
Other	4	(1)	-	(-)	-	(-)	4	(1)
Totals	48	(3)	1	(1)	2	(1)	51	(5)
Overtaking								
A line of traffic or queue	18	(3)	5	(1)	1	(-)	24	(4)
Deliberately in the face of oncoming traffic	8	(-)	-	(-)	-	(-)	8	(-)
Failed to notice oncoming traffic	17	(5)	5	(1)	-	(-)	22	(6)
Misjudged speed or distance of oncoming traffic	2	(-)	-	(-)	-	(-)	2	(-)
At no passing line	13	(2)	1	(-)	-	(-)	14	(2)
With insufficient visibility	26	(1)	3	(1)	-	(-)	29	(2)
At an intersection without due care	11	(-)	4	(-)	-	(-)	15	(-)
On left without due care	14	(-)	16	(-)	16	(-)	46	(-)
Cut in after overtaking	32	(-)	-	(-)	-	(-)	32	(-)
Vehicle signalling right turn	24	(1)	10	(-)	3	(-)	37	(1)
Carelessly at a pedestrian crossing	2	(-)	-	(-)	-	(-)	2	(-)
Other	21	(4)	8	(1)	1	(-)	30	(5)
Totals	188	(16)	52	(4)	21	(-)	261	(20)

(CONTINUED)

NOTE: The figures in brackets are the number of factors in fatal crashes and are not included in the adjacent totals. See note 10.

Table 26

**Factors Probably Contributing to Crashes
Year ended 31 December 2006**

Factors	Motor Vehicle	Motor Cycle	Pedal Cycle	Totals				
DRIVER/RIDER CONTROL FACTORS (continued)								
Wrong lane or turned from wrong position								
Turned right from incorrect lane	14	(-)	-	(-)	2	(1)	16	(1)
Turned left from incorrect lane	6	(-)	-	(-)	-	(-)	6	(-)
Travelled straight ahead from turning lane or flush median	5	(-)	-	(-)	-	(-)	5	(-)
Turned right from left side of road	19	(-)	1	(-)	4	(-)	24	(-)
Turned left from near centre line	7	(-)	-	(-)	-	(-)	7	(-)
Turned into incorrect lane	7	(-)	-	(-)	-	(-)	7	(-)
Weaving or cut in on multi-lane roads	10	(-)	-	(-)	-	(-)	10	(-)
Moved left to avoid slow vehicle	1	(-)	-	(-)	-	(-)	1	(-)
Other	3	(-)	2	(-)	1	(-)	6	(-)
Totals	72	(-)	3	(-)	7	(1)	82	(1)
In Line of Traffic								
Following too closely	575	(5)	29	(-)	6	(-)	610	(5)
Travelling unreasonably slowly	1	(-)	-	(-)	1	(-)	2	(-)
Motorist crowded cyclist	7	(-)	-	(-)	-	(-)	7	(-)
Other	2	(-)	-	(-)	-	(-)	2	(-)
Totals	585	(5)	29	(-)	7	(-)	621	(5)
Sudden Action								
Braked	84	(2)	8	(-)	-	(-)	92	(2)
Turned left	5	(-)	-	(-)	-	(-)	5	(-)
Turned right	4	(-)	-	(-)	1	(-)	5	(-)
Swerved to avoid								
- pedestrian	5	(1)	2	(-)	1	(-)	8	(1)
- animal	80	(-)	8	(-)	-	(-)	88	(-)
- crash or broken down vehicle	5	(-)	2	(-)	-	(-)	7	(-)
- vehicle	119	(7)	14	(-)	1	(-)	134	(7)
- object or for unknown reason	19	(-)	1	(-)	1	(-)	21	(-)
Other	12	(-)	-	(-)	1	(-)	13	(-)
Totals	333	(10)	35	(-)	5	(-)	373	(10)
Forbidden movements								
Wrong way in one way street, motorway or roundabout								
	5	(-)	-	(-)	2	(-)	7	(-)
When turning or U turning contrary to a sign								
	4	(-)	-	(-)	-	(-)	4	(-)
Contrary to "in" or "out" only driveway signs								
	1	(-)	-	(-)	-	(-)	1	(-)
Driving or riding on footpath								
	3	(-)	4	(-)	69	(1)	76	(1)
On incorrect side of island or median								
	6	(-)	1	(-)	2	(-)	9	(-)
Contrary to "No Entry" sign								
	4	(-)	-	(-)	-	(-)	4	(-)
In car park								
	-	(-)	-	(-)	1	(-)	1	(-)
Motor vehicle in cycle lane								
	3	(-)	-	(-)	-	(-)	3	(-)
Bus / Transit lane								
	3	(-)	2	(-)	-	(-)	5	(-)
Other								
	8	(1)	1	(-)	4	(-)	13	(1)
Totals	37	(1)	8	(-)	78	(1)	123	(2)
TOTAL DRIVER/RIDER CONTROL FACTORS	7788	(507)	614	(67)	193	(7)	8595	(581)

(CONTINUED)

NOTE: The figures in brackets are the number of factors in fatal crashes and are not included in the adjacent totals. See note 10.

Table 26

**Factors Probably Contributing to Crashes
Year ended 31 December 2006**

Factors	Motor Vehicle	Motor Cycle	Pedal Cycle	Totals
VEHICLE CONFLICT FACTORS				
Failed to give way				
At a Stop sign	296 (5)	4 (-)	2 (1)	302 (6)
At a Give Way sign	805 (12)	9 (-)	18 (-)	832 (12)
When turning, to non-turning traffic	680 (12)	6 (1)	8 (-)	694 (13)
When deemed turning by markings, not geometry	1 (-)	- (-)	- (-)	1 (-)
When turning left, to opposing right turning traffic	3 (-)	- (-)	1 (-)	4 (-)
To pedestrian on a crossing	75 (2)	- (-)	- (-)	75 (2)
When turning at signals to pedestrians	36 (-)	- (-)	- (-)	36 (-)
When entering roadway from driveway	177 (2)	8 (-)	23 (-)	208 (2)
To traffic approaching or crossing from right	38 (-)	3 (-)	4 (-)	45 (-)
At one lane bridge/road	8 (-)	- (-)	- (-)	8 (-)
To pedestrian on footpath or verge	6 (-)	- (-)	- (-)	6 (-)
Entering roadway not from driveway or intersection	10 (-)	1 (-)	33 (-)	44 (-)
To emergency vehicle	6 (-)	- (-)	- (-)	6 (-)
Driver waved through	30 (-)	- (-)	- (-)	30 (-)
Other	34 (-)	1 (-)	12 (-)	47 (-)
Totals	2205 (33)	32 (1)	101 (1)	2338 (35)
Did not Stop				
At stop sign	104 (5)	- (-)	2 (-)	106 (5)
At steady red light	240 (1)	4 (1)	5 (-)	249 (2)
At steady red arrow	31 (1)	- (-)	- (-)	31 (1)
At steady amber light	35 (-)	1 (-)	1 (-)	37 (-)
At steady amber arrow	- (-)	- (-)	- (-)	- (-)
At flashing red lights (railway crossing, fire station etc)	3 (1)	- (-)	- (-)	3 (1)
For police or flagperson	2 (-)	- (-)	- (-)	2 (-)
For school patrol/kea crossing	1 (-)	- (-)	- (-)	1 (-)
Other	1 (-)	- (-)	1 (-)	2 (-)
Totals	417 (8)	5 (1)	9 (-)	431 (9)
Inattentive: failed to notice				
Car slowing, stopping or stopped in front	694 (4)	29 (1)	5 (-)	728 (5)
Bend in road	51 (5)	8 (1)	- (-)	59 (6)
Indication of vehicle in front	72 (4)	14 (-)	6 (-)	92 (4)
Traffic lights	117 (-)	1 (-)	1 (-)	119 (-)
Intersection or it's Stop/Give Way control	94 (1)	2 (-)	- (-)	96 (1)
Other regulatory sign/markings	4 (-)	- (-)	- (-)	4 (-)
Warning sign	15 (1)	- (-)	- (-)	15 (1)
Direction, information signs/markings	6 (-)	- (-)	- (-)	6 (-)
Roadworks signs	14 (1)	- (-)	- (-)	14 (1)
Lane use arrows/markings	1 (-)	- (-)	- (-)	1 (-)
Obstructions on Roadway	8 (1)	- (-)	- (-)	8 (1)
Other	109 (10)	6 (-)	11 (-)	126 (10)
Totals	1185 (27)	60 (2)	23 (-)	1268 (29)

(CONTINUED)

NOTE: The figures in brackets are the number of factors in fatal crashes and are not included in the adjacent totals. See note 10.

Table 26

**Factors Probably Contributing to Crashes
Year ended 31 December 2006**

Factors	Motor Vehicle	Motor Cycle	Pedal Cycle	Totals
VEHICLE CONFLICT FACTORS (continued)				
Attention diverted by:				
Passengers	126 (3)	- (-)	1 (-)	127 (3)
Scenery or persons outside vehicle	109 (1)	3 (-)	3 (-)	115 (1)
Other traffic	190 (4)	9 (-)	4 (-)	203 (4)
Animal or insect in vehicle	34 (3)	1 (-)	- (-)	35 (3)
Trying to find intersection/house no.	35 (-)	1 (-)	- (-)	36 (-)
Advertising or signs	3 (-)	2 (-)	- (-)	5 (-)
Emotionally upset	76 (4)	1 (-)	1 (-)	78 (4)
Cigarette, radio, glove box etc.	201 (2)	2 (-)	- (-)	203 (2)
Cell phone or two way communications device	90 (2)	1 (-)	- (-)	91 (2)
Driver dazzled	172 (3)	4 (-)	3 (-)	179 (3)
Other	173 (6)	8 (-)	6 (-)	187 (6)
Totals	1209 (28)	32 (-)	18 (-)	1259 (28)
Did not see or look for another party				
Behind when				
- reversing	141 (1)	- (-)	- (-)	141 (1)
- changing lanes, position, or direction (includes U-turns)	347 (7)	9 (-)	33 (3)	389 (10)
- pulling out from parked position	42 (1)	- (-)	- (-)	42 (1)
- opening door or leaving vehicle	51 (-)	- (-)	- (-)	51 (-)
When required to give way to				
- traffic from another direction	1168 (13)	21 (-)	24 (-)	1213 (13)
- pedestrians	51 (1)	- (-)	- (-)	51 (1)
When visibility was				
- obstructed by other vehicles	211 (3)	2 (2)	7 (-)	220 (5)
- limited by roadside features	53 (-)	- (-)	6 (-)	59 (-)
When first in queue on receiving green light				
Other	97 (6)	7 (-)	7 (1)	111 (7)
Totals	2166 (32)	39 (2)	77 (4)	2282 (38)
Misjudged speed, distance, size, etc of				
Other vehicle coming from				
- behind or alongside	31 (3)	- (-)	1 (-)	32 (3)
- another direction with right of way	116 (4)	2 (-)	2 (-)	120 (4)
Pedestrian movement or intention	1 (-)	1 (-)	- (-)	2 (-)
Towed vehicle, or while towing	- (-)	1 (-)	- (-)	1 (-)
Fixed object or obstacle	5 (2)	- (2)	1 (-)	6 (4)
Own vehicle	65 (3)	12 (1)	3 (-)	80 (4)
Misjudged intentions of another party	143 (3)	13 (-)	5 (-)	161 (3)
Other	16 (2)	- (-)	- (-)	16 (2)
Totals	377 (17)	29 (3)	12 (-)	418 (20)
TOTAL VEHICLE CONFLICT FACTORS	7559 (145)	197 (9)	240 (5)	7996 (159)

(CONTINUED)

NOTE: The figures in brackets are the number of factors in fatal crashes and are not included in the adjacent totals. See note 10.

Table 26

**Factors Probably Contributing to Crashes
Year ended 31 December 2006**

Factors	Motor Vehicle	Motor Cycle	Pedal Cycle	Totals		
GENERAL DRIVER FACTORS						
Inexperience						
In driving in fast or heavy traffic	3	(-)	1	(-)	4	(-)
New driver	449	(14)	38	(1)	487	(15)
Driving strange vehicle	61	(3)	20	(2)	82	(5)
Foreign driver	62	(5)	1	(-)	64	(5)
Driver under instruction	6	(-)	-	(-)	6	(-)
At towing trailer/other vehicle	1	(-)	-	(-)	1	(-)
Driver over-reacted	119	(2)	2	(-)	121	(2)
Unsupervised cyclist	-	(-)	-	(-)	4	(1)
Other	61	(2)	7	(-)	69	(2)
Totals	762	(26)	69	(3)	838	(30)
Fatigue (Drowsy, tired or fell asleep)						
Long trip	25	(1)	1	(-)	26	(1)
Lack of sleep	71	(1)	1	(-)	72	(1)
Exhaust fumes	-	(-)	-	(-)	-	(-)
Worked long hours before driving	34	(1)	-	(-)	34	(1)
Exceeded driving hours	2	(1)	-	(-)	2	(1)
Other	514	(34)	4	(-)	519	(34)
Totals	646	(38)	6	(-)	653	(38)
Incorrect use of vehicle controls						
Started in gear	2	(-)	-	(-)	2	(-)
Stalled engine	1	(-)	-	(-)	1	(-)
Wrong pedal	72	(4)	1	(-)	73	(4)
Footrest, stand	-	(-)	-	(-)	-	(-)
Ignition turned off (steering locked)	-	(-)	-	(-)	-	(-)
Lights not switched on	3	(-)	1	(-)	7	(-)
Foot slipped	43	(1)	-	(-)	44	(1)
Parking brake not fully applied	8	(-)	-	(-)	8	(-)
Trailer coupling or safety chain not secured	1	(-)	-	(-)	1	(-)
Other	26	(-)	3	(-)	29	(-)
Totals	156	(5)	5	(-)	165	(5)
Showing off						
Racing	60	(11)	3	(-)	63	(12)
Playing chicken	-	(-)	1	(-)	1	(-)
Wheelspins/wheelies/doughnuts etc	22	(1)	1	(-)	24	(1)
Intimidating driving	11	(-)	1	(-)	12	(-)
Other	35	(2)	6	(-)	43	(2)
Totals	128	(14)	12	(-)	143	(15)
Parked or stopped						
Inadequately lit at night (not lit by street lights or park lights off)	4	(2)	-	(-)	4	(2)
At a point of limited visibility	4	(-)	-	(-)	4	(-)
Not as close as practicable to the side of the road	10	(1)	-	(-)	10	(1)
On incorrect side of the road	-	(-)	-	(-)	-	(-)
Double parked	2	(-)	-	(-)	2	(-)
In a "No Stopping" area	-	(-)	-	(-)	-	(-)
Not clear of rail crossing	-	(-)	-	(-)	-	(-)
In cycle or Transit lane	1	(-)	-	(-)	1	(-)
Other	4	(-)	-	(-)	4	(-)
Totals	25	(3)	-	(-)	25	(3)
TOTAL GENERAL DRIVER FACTORS	1717	(86)	92	(3)	1824	(91)

(CONTINUED)

NOTE: The figures in brackets are the number of factors in fatal crashes and are not included in the adjacent totals. See note 10.

Table 26

**Factors Probably Contributing to Crashes
Year ended 31 December 2006**

Factors	Motor Vehicle	Motor Cycle	Pedal Cycle	Totals				
GENERAL PERSON FACTORS								
Illness and disability								
Illness with no warning	173	(7)	2	(-)	1	(-)	176	(7)
Physically disabled	2	(-)	1	(-)	-	(-)	3	(-)
Defective vision	11	(1)	1	(-)	-	(-)	12	(1)
Medical illness (not sudden) flu, diabetes	41	(2)	-	(-)	1	(-)	42	(2)
Mental illness(depression, psychosis)	10	(-)	-	(-)	-	(-)	10	(-)
Suicidal (but not successful)	17	(-)	-	(-)	-	(-)	17	(-)
Impaired ability due to old age	96	(4)	-	(-)	-	(-)	96	(4)
Other	15	(2)	-	(-)	1	(-)	16	(2)
Totals	365	(16)	4	(-)	3	(-)	372	(16)
Intentional or criminal								
Deliberate homicide (only if successful)	1	(-)	-	(-)	-	(-)	1	(-)
Intentional collision	54	(-)	-	(-)	-	(-)	54	(-)
Committed suicide (only if succeeded)	-	(-)	-	(-)	-	(-)	-	(-)
Evading enforcement	84	(4)	8	(-)	-	(-)	92	(4)
Object deliberately thrown at or dropped on vehicle/shot at	-	(-)	-	(-)	-	(-)	-	(-)
Object thrown from vehicle	-	(-)	-	(-)	-	(-)	-	(-)
Stolen vehicle	55	(4)	2	(1)	1	(-)	58	(5)
Other	5	(1)	-	(-)	-	(-)	5	(1)
Totals	199	(9)	10	(1)	1	(-)	210	(10)
Driver/Pass boarding/leaving/in vehicle								
Boarding moving vehicle	3	(-)	-	(-)	-	(-)	3	(-)
Intentionally leaving moving vehicle	2	(1)	-	(-)	-	(-)	2	(1)
Riding in insecure position	14	(2)	1	(-)	1	(-)	16	(2)
Interfered with driver	20	(-)	-	(-)	-	(-)	20	(-)
Opened door inadvertently	5	(-)	-	(-)	-	(-)	5	(-)
Overloaded vehicle (with passengers)	2	(-)	-	(-)	-	(-)	2	(-)
Child playing in parked vehicle	-	(-)	-	(-)	-	(-)	-	(-)
Other	6	(-)	-	(-)	1	(-)	7	(-)
Totals	52	(3)	1	(-)	2	(-)	55	(3)
Miscellaneous person								
Casualty drowned	-	(5)	-	(-)	-	(-)	-	(5)
Casualty thrown from vehicle	15	(28)	-	(-)	-	(-)	15	(28)
Equestrian not keeping to verge	-	(-)	-	(-)	-	(-)	-	(-)
Cyclist or motorcyclist wearing dark clothing	-	(-)	3	(-)	5	(-)	8	(-)
Other	-	(-)	-	(1)	-	(-)	-	(1)
Totals	15	(33)	3	(1)	5	(-)	23	(34)
TOTAL GENERAL PERSON FACTORS	631	(61)	18	(2)	11	(-)	660	(63)

(CONTINUED)

NOTE: The figures in brackets are the number of factors in fatal crashes and are not included in the adjacent totals. See note 10.

Table 26

**Factors Probably Contributing to Crashes
Year ended 31 December 2006**

Factors	Motor Vehicle	Motor Cycle	Pedal Cycle	Totals				
VEHICLE FACTORS								
Lights and Reflectors								
Dazzling headlights	5	(-)	-	(-)	5	(-)		
Inadequate or no headlights	18	(-)	7	(-)	20	(-)	45	(-)
Headlights failed suddenly	-	(-)	1	(-)	-	(-)	1	(-)
Brake lights or indicators defective or not fitted	3	(-)	-	(-)	1	(-)	4	(-)
Inadequate or no tail-lights	-	(-)	-	(-)	3	(-)	3	(-)
Inadequate or no reflectors	4	(-)	-	(-)	2	(-)	6	(-)
Lights or reflectors covered by dirt	-	(-)	-	(-)	-	(-)	-	(-)
Other	1	(-)	-	(-)	-	(-)	1	(-)
Totals	31	(-)	8	(-)	26	(-)	65	(-)
Brakes								
Parking brake								
- failed	4	(-)	-	(-)	-	(-)	4	(-)
- defective	-	(-)	-	(-)	-	(-)	-	(-)
Service brake								
- failed	9	(-)	2	(-)	-	(-)	11	(-)
- defective	7	(-)	2	(-)	4	(-)	13	(-)
Jack-knifed	8	(1)	-	(-)	-	(-)	8	(1)
Other	5	(4)	2	(-)	5	(-)	12	(4)
Totals	33	(5)	6	(-)	9	(-)	48	(5)
Steering								
Defective	7	(-)	-	(-)	-	(-)	7	(-)
Failed suddenly	7	(-)	-	(-)	-	(-)	7	(-)
Other	1	(-)	-	(-)	-	(-)	1	(-)
Totals	15	(-)	-	(-)	-	(-)	15	(-)
Tyres								
Puncture or blow out	34	(-)	5	(-)	-	(-)	39	(-)
Tread worn	92	(7)	3	(-)	-	(-)	95	(7)
Incorrect type	6	(-)	1	(-)	-	(-)	7	(-)
Mixed treads/space savers	10	(3)	-	(-)	-	(-)	10	(3)
Other	17	(4)	-	(-)	-	(-)	17	(4)
Totals	159	(14)	9	(-)	-	(-)	168	(14)
Windscreen or Mirror								
Windscreen shattered	2	(-)	-	(-)	-	(-)	2	(-)
Windscreen or rear window dirty	4	(1)	-	(-)	-	(-)	4	(1)
Rear vision mirror not adjusted correctly	-	(-)	-	(-)	-	(-)	-	(-)
No rear vision mirror	-	(-)	-	(-)	-	(-)	-	(-)
Windscreen, spectacles or rear window misted/frosted	36	(1)	-	(-)	-	(-)	36	(1)
Inadequate or no sun visors	-	(-)	-	(-)	-	(-)	-	(-)
Inadequate or no windscreen wipers	1	(-)	-	(-)	-	(-)	1	(-)
Cycle/motorcycle visor, goggles or screen defective, misted etc.	1	(-)	3	(-)	-	(-)	4	(-)
Other	1	(-)	-	(-)	-	(-)	1	(-)
Totals	45	(2)	3	(-)	-	(-)	48	(2)

(CONTINUED)

NOTE: The figures in brackets are the number of factors in fatal crashes and are not included in the adjacent totals. See note 10.

Table 26

**Factors Probably Contributing to Crashes
Year ended 31 December 2006**

Factors	Motor Vehicle		Motor Cycle		Pedal Cycle		Totals	
VEHICLE FACTORS continued								
Mechanical								
Engine failure	2	(-)	1	(-)	-	(-)	3	(-)
Transmission failure	4	(-)	4	(-)	-	(-)	8	(-)
Accelerator or throttle jammed	1	(-)	3	(-)	-	(-)	4	(-)
Other	8	(2)	3	(-)	-	(-)	11	(2)
Totals	15	(2)	11	(-)	-	(-)	26	(2)
Body or chassis								
Body, chassis or frame failure	-	(1)	2	(-)	-	(-)	2	(1)
Suspension failure	5	(-)	-	(-)	-	(-)	5	(-)
Failure of door catch/door not shut	-	(-)	-	(-)	-	(-)	-	(-)
Inadequate mudguards	-	(-)	-	(-)	-	(-)	-	(-)
Inadequate tow coupling	3	(-)	-	(-)	-	(-)	3	(-)
Inadequate or no safety chain	-	(-)	-	(-)	-	(-)	-	(-)
Bonnet catch failed	1	(-)	-	(-)	-	(-)	1	(-)
Wheel off	3	(-)	-	(-)	-	(-)	3	(-)
Broken axle	2	(-)	-	(-)	-	(-)	2	(-)
Inconspicuous colour	8	(-)	-	(-)	-	(-)	8	(-)
Blind spot	30	(-)	-	(-)	-	(-)	30	(-)
Seatbelt/restraint failed	-	(-)	-	(-)	-	(-)	-	(-)
Airbag failed to inflate (fully)	-	(-)	-	(-)	-	(-)	-	(-)
Other	7	(1)	3	(-)	-	(1)	10	(2)
Totals	59	(2)	5	(-)	-	(1)	64	(3)
Load								
Interferes with driver	13	(-)	1	(-)	-	(-)	14	(-)
Not well secured or load moved	11	(1)	-	(-)	-	(-)	11	(1)
Overhanging	1	(-)	-	(-)	-	(-)	1	(-)
Load obscured vision	2	(-)	-	(-)	-	(-)	2	(-)
Excess dimensions not adequately indicated	1	(-)	-	(-)	-	(-)	1	(-)
Overdimension vehicle or load	5	(-)	-	(-)	-	(-)	5	(-)
Load too heavy	5	(-)	-	(-)	-	(-)	5	(-)
Towed vehicle or trailer too heavy or incompatible	9	(1)	-	(-)	-	(-)	9	(1)
Other	7	(-)	-	(-)	-	(-)	7	(-)
Totals	54	(2)	1	(-)	-	(-)	55	(2)
Miscellaneous vehicle								
Emergency vehicle attending emergency	5	(1)	1	(-)	-	(-)	6	(1)
Vehicle caught fire	36	(12)	5	(1)	-	(-)	41	(13)
Being towed	1	(-)	-	(-)	-	(-)	1	(-)
Airbag contributed to crash or injury	1	(-)	-	(-)	-	(-)	1	(-)
Seatbelt/restraint absent or unusable	-	(-)	-	(-)	-	(-)	-	(-)
Dangerous goods	-	(-)	-	(-)	-	(-)	-	(-)
Other	2	(-)	-	(-)	-	(-)	2	(-)
Totals	45	(13)	6	(1)	-	(-)	51	(14)
TOTAL VEHICLE FACTORS	456	(40)	49	(1)	35	(1)	540	(42)

(CONTINUED)

NOTE: The figures in brackets are the number of factors in fatal crashes and are not included in the adjacent totals. See note 10.

Table 26

**Factors Probably Contributing to Crashes
Year ended 31 December 2006**

Factors	Number	
PEDESTRIAN FACTORS		
Walking along road		
Not keeping to footpath	3	(2)
Not keeping to side of road	6	(3)
Not facing oncoming traffic	5	(1)
Not on outside of blind curve	-	(-)
Wheeled ped inconsiderate or dangerous on footpath	-	(-)
Other	5	(1)
Totals	19	(7)
Crossing road		
Walking heedless of traffic	209	(11)
Stepping out from behind parked vehicle	91	(5)
Running heedless of traffic	239	(6)
Failed to use pedestrian crossing when one within 20 metres	21	(1)
Waiting on roadway for moving traffic	16	(1)
Confused by traffic or stepped back	10	(-)
Stepping suddenly onto pedestrian crossing	9	(-)
Not complying with traffic signals or school patrol	42	(1)
Misjudged speed and/or distance of vehicle	13	(2)
Other	29	(1)
Totals	679	(28)
Miscellaneous		
Pushing, working or unloading vehicle	4	(-)
Playing on, or unnecessarily on road	23	(1)
Working on road	5	(-)
Wearing dark clothing	35	(9)
Vision obscured by umbrella or clothing	2	(-)
Child escaped from supervision	27	(1)
Unsupervised child	63	(3)
Sitting/lying on road	3	(7)
Pedestrian from school bus	6	(2)
Pedestrian behind reversing/manoeuvring vehicle	14	(-)
Overseas pedestrian	4	(-)
Other	11	(4)
Totals	197	(27)
TOTAL PEDESTRIAN FACTORS	895	(62)

(CONTINUED)

NOTE: The figures in brackets are the number of factors in fatal crashes and are not included in the adjacent totals. See note 10.

Table 26

**Factors Probably Contributing to Crashes
Year ended 31 December 2006**

Factors	Number	
ROAD FACTORS		
Slippery because of		
Rain	448	(7)
Frost or ice	169	(3)
Snow or hail	24	(1)
Loose material on seal	83	(-)
Mud	8	(-)
Oil/diesel/fuel	52	(3)
Painted markings	3	(-)
Recently graded	8	(-)
Surface bleeding/defective	35	(1)
Other	53	(1)
Totals	883	(16)
Surface		
Potholed	6	(-)
Uneven	21	(1)
Deep loose metal	50	(-)
High crown	-	(-)
Curve not well banked	5	(1)
Edge badly defined or gave way	10	(-)
Under construction or maintenance	110	(1)
Unusually narrow	26	(2)
Broken glass	-	(-)
Other	14	(1)
Totals	242	(6)
Obstructed		
Fallen tree or branch	-	(-)
Slip or subsidence	2	(-)
Flood waters, large puddles, ford	13	(-)
Road works		
- not adequately lighted	-	(-)
- not adequately signposted	4	(-)
Roadside object fell on vehicle	1	(-)
Object flicked up by vehicle	3	(-)
Other	8	(-)
Totals	31	(-)
Visibility limited by		
Curve	57	(2)
Crest	45	(4)
Building	5	(-)
Trees	19	(-)
Hedge or fence	20	(-)
Scrub or long grass	6	(-)
Bank	3	(-)
Temporary obstruction or dust/smoke	4	(-)
Parked vehicle	49	(3)
Other	25	(2)
Totals	233	(11)

(CONTINUED)

NOTE: The figures in brackets are the number of factors in fatal crashes and are not included in the adjacent totals. See note 10.

Table 26

**Factors Probably Contributing to Crashes
Year ended 31 December 2006**

Factors	Number	
ROAD FACTORS continued		
Signs and signals		
Damaged, removed or malfunctioned	5	(-)
Badly located	4	(-)
Ineffective or inadequate	7	(2)
Necessary	7	(-)
Signals turned off	-	(-)
Other	-	(-)
Totals	23	(2)
Markings		
Faded	6	(-)
Difficult to see in weather conditions	1	(-)
Necessary	6	(-)
Not visible due to geometry or vehicles	1	(-)
Old markings not adequately removed	-	(-)
Other	5	(-)
Totals	19	(-)
Street lighting		
Failed	3	(1)
Inadequate	10	(1)
Glare on wet road	-	(-)
Pedestrian crossing not adequately lighted	3	(-)
Other	3	(1)
Totals	19	(3)
Raised islands and roundabouts		
Difficult to see	-	(-)
Ineffective, badly located/designed	1	(-)
Cyclist squeeze point	-	(-)
Other	1	(-)
Totals	2	(-)
TOTAL ROAD FACTORS	1452	(38)

(CONTINUED)

NOTE: The figures in brackets are the number of factors in fatal crashes and are not included in the adjacent totals. See note 10.

Table 26

**Factors Probably Contributing to Crashes
Year ended 31 December 2006**

Factors	Number	
MISCELLANEOUS FACTORS		
Weather		
Heavy rain	163	(12)
Dazzling sun	182	(3)
Strong wind	39	(6)
Fog or mist	41	(1)
Snow sleet or hail	5	(-)
Other	2	(-)
Totals	432	(22)
Animals		
Household pet rushed out or playing	13	(-)
Farm animal straying	63	(1)
Farm animal attended but		
- inadequate warning or unexpected	2	(-)
- out of control	1	(-)
Wild	2	(-)
Other	1	(-)
Totals	82	(1)
Entering or leaving land use		
Roadside stall	3	(-)
Service station	55	(-)
Specialised liquor outlet	10	(-)
Takeaway foods	13	(-)
Shopping complex	66	(1)
Car parking building/area	46	(-)
Other commercial	147	(3)
Industrial site	9	(-)
Private house/farm	396	(8)
Other non-commercial	75	(1)
Mobile shop or vendor	-	(-)
Other	15	(1)
Totals	835	(14)
Unknown Factor	26	(-)
TOTAL MISCELLANEOUS FACTORS	1375	(37)
TOTAL ALL FACTORS	23337	(1073)

NOTE: The figures in brackets are the number of factors in fatal crashes and are not included in the adjacent totals. See note 10.

Table 26A

Crashes and Casualties where Driver Alcohol/Drugs was a Contributing Factor

Year	Crashes with Alcohol/Drugs				Casualties from Crashes with Alcohol/Drugs			
	Fatal		Injury		Deaths		Injuries	
	Number	Percent	Number	Percent	Number	Percent	Number	Percent
1985	238	36.1	2493	19.3	274	36.7	4418	23.4
1986	266	40.5	2575	20.1	328	42.8	4520	23.9
1987	271	39.4	2595	20.5	329	41.3	4498	24.0
1988	266	42.6	2500	20.9	318	43.7	4246	24.5
1989	264	40.6	2364	20.8	321	42.1	3969	24.0
1990	268	42.1	2716	22.3	318	43.6	4531	25.6
1991	225	40.6	2424	20.9	269	41.4	3935	23.5
1992	221	40.8	2282	20.6	273	42.3	3672	22.8
1993	185	35.8	1906	18.2	227	37.8	3042	20.1
1994	190	38.3	2044	18.0	225	38.8	3300	19.9
1995	162	32.3	2118	18.1	200	34.4	3421	20.3
1996	129	28.2	1652	16.3	148	28.8	2664	18.0
1997	127	27.1	1389	15.5	147	27.3	2317	17.4
1998	118	27.1	1347	16.2	142	28.3	2233	18.0
1999	100	23.0	1146	14.3	122	24.0	1904	15.9
2000	101	26.4	1063	14.3	115	24.9	1727	15.8
2001	104	26.3	1111	13.1	118	25.9	1870	15.1
2002	95	26.1	1296	13.2	109	27.0	1995	14.3
2003	124	30.6	1229	12.0	141	30.6	1953	13.6
2004	116	30.9	1235	12.4	135	31.0	1899	13.7
2005	100	29.3	1335	12.8	115	28.4	1992	13.8
2006	99	28.4	1537	14.0	109	27.9	2324	15.3

Table 26B

Crashes and Casualties where Travelling Too Fast for Conditions was a Contributing Factor

Year	Crashes with Speed				Casualties from Crashes with Speed			
	Fatal		Injury		Deaths		Injuries	
	Number	Percent	Number	Percent	Number	Percent	Number	Percent
1985	193	29.2	1848	14.3	218	29.2	3210	17.0
1986	192	29.3	2024	15.8	224	29.2	3544	18.8
1987	251	36.5	2253	17.8	292	36.7	3904	20.8
1988	231	37.0	2204	18.5	267	36.7	3650	21.0
1989	257	39.5	2146	18.9	311	40.8	3624	21.9
1990	224	35.2	2041	16.8	265	36.4	3422	19.3
1991	190	34.3	2108	18.2	225	34.6	3383	20.2
1992	195	36.0	1918	17.3	241	37.3	3164	19.6
1993	192	37.1	1712	16.3	228	38.0	2801	18.5
1994	191	38.5	1816	16.0	228	39.3	2982	18.0
1995	182	36.3	1827	15.6	221	38.0	2988	17.7
1996	153	33.5	1684	16.7	177	34.4	2806	19.0
1997	137	29.3	1461	16.3	162	30.1	2508	18.8
1998	140	32.1	1415	17.0	162	32.3	2427	19.6
1999	124	28.6	1180	14.7	153	30.1	2095	17.5
2000	87	22.7	1122	15.1	102	22.1	1923	17.5
2001	123	31.1	1298	15.3	141	31.0	2197	17.8
2002	108	29.7	1431	14.6	126	31.2	2339	16.8
2003	140	34.6	1644	16.1	167	36.2	2601	18.1
2004	138	36.7	1632	16.3	172	39.4	2624	18.9
2005	112	32.8	1700	16.2	130	32.1	2670	18.5
2006	107	30.7	1734	15.8	126	32.2	2746	18.1

Notes The Police Traffic Crash Report form was modified in 2001. The "too fast for conditions" data since this change is not strictly comparable to earlier data.
 Most crashes have a number of contributing causal factors and many have both alcohol and "too fast for conditions". For this reason these tables can not be added together to give the total number of crashes with alcohol/drugs and/or "too fast for conditions" listed as contributing factors

