

**Section 8**  
**Drivers involved in reported injury crashes**



**Table 49**

**Drivers Involved in Fatal Crashes  
by Age and Vehicle Type  
Year ended 31 December 2006**

Age Group Years	----- Car/Van -----		----- Truck -----		----- Motorcycle -----		----- Total -----	
	Number	Percent Male	Number	Percent Male	Number	Percent Male	Number	Percent Male
0 to 14	-	-	-	-	-	-	-	-
15 to 19	59	66	2	100	3	100	64	69
20 to 24	56	68	3	100	6	100	65	72
25 to 29	31	58	4	100	2	100	38	66
30 to 34	35	83	9	100	8	100	52	89
35 to 39	39	62	9	89	8	100	59	71
40 to 44	43	67	12	100	9	89	66	76
45 to 49	25	64	12	100	4	100	41	78
50 to 54	23	70	13	100	2	100	38	82
55 to 59	19	63	4	100	2	100	27	74
60 to 64	19	47	4	100	-	-	23	57
65 to 69	14	93	3	100	1	100	19	95
70 and over	43	74	1	100	-	-	44	75
Unknown	7	43	2	50	-	-	9	44
<b>Total</b>	<b>413</b>	<b>67</b>	<b>78</b>	<b>97</b>	<b>45</b>	<b>98</b>	<b>545</b>	<b>74</b>

Note: Columns do not always add to the total as there are other vehicle types such as buses not included separately in the table.

**Table 50**

**Drivers Involved in Injury Crashes  
by Age and Vehicle Type  
Year ended 31 December 2006**

Age Group Years	----- Car/Van -----		----- Truck -----		----- Motorcycle -----		----- Total -----	
	Number	Percent Male	Number	Percent Male	Number	Percent Male	Number	Percent Male
0 to 14	31	71	-	-	15	93	47	79
15 to 19	2397	64	19	95	171	87	2592	66
20 to 24	2271	61	45	91	139	87	2459	63
25 to 29	1501	63	59	97	93	85	1666	66
30 to 34	1339	60	93	97	116	89	1560	64
35 to 39	1339	56	109	95	81	85	1540	61
40 to 44	1316	58	110	96	103	86	1543	63
45 to 49	1133	60	92	96	93	88	1346	65
50 to 54	885	59	86	93	73	88	1069	64
55 to 59	707	60	87	99	29	93	855	67
60 to 64	506	57	38	95	17	82	586	62
65 to 69	379	63	15	100	9	100	419	66
70 and over	885	56	6	100	13	85	909	57
Unknown	578	33	41	42	15	73	645	34
<b>Total</b>	<b>15267</b>	<b>59</b>	<b>800</b>	<b>93</b>	<b>967</b>	<b>87</b>	<b>17236</b>	<b>63</b>

Note: Columns do not always add to the total as there are other vehicle types such as buses not included separately in the table.  
Fatal crashes are not included in this table (see table 49).

**Table 51**  
**Car and Van Drivers Involved in Fatal Crashes by Age Group**  
**Year ending 31 December**

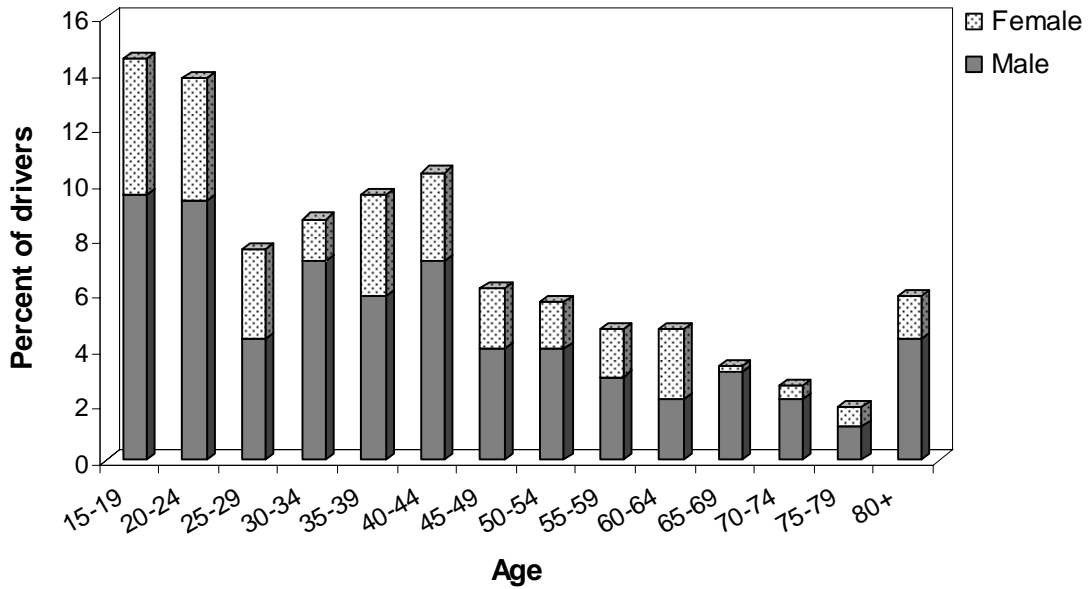
Year	15 to 19 Years	20 to 24 Years	25 to 29 Years	30 to 39 Years	40 to 59 Years	60 Years and over	Unknown and other	Total
1975	129	110	87	95	118	53	29	621
1976	116	113	63	79	116	53	27	567
1977	148	136	87	101	114	64	27	677
1978	109	141	84	97	124	56	24	635
1979	83	126	59	91	97	45	24	525
1980	95	132	80	81	88	58	20	554
1981	121	122	78	90	84	68	40	603
1982	112	156	70	105	104	59	21	627
1983	108	156	71	100	109	59	29	632
1984	116	139	84	110	116	56	18	639
1985	119	143	113	128	111	70	29	713
1986	126	154	100	139	127	60	35	741
1987	138	137	118	144	135	65	25	762
1988	110	133	105	119	131	68	19	685
1989	101	119	105	143	146	80	26	720
1990	99	145	105	128	122	59	36	694
1991	94	140	89	119	115	67	15	639
1992	76	119	85	122	120	74	28	624
1993	78	106	70	108	100	72	36	570
1994	64	110	81	117	110	54	21	557
1995	72	100	70	125	130	59	16	572
1996	80	82	70	94	114	60	21	521
1997	69	71	59	104	138	82	29	552
1998	70	84	61	115	115	74	28	547
1999	70	85	69	95	115	88	19	541
2000	56	64	42	94	128	87	21	492
2001	60	68	57	72	115	77	23	472
2002	44	55	54	79	108	69	18	427
2003	71	71	63	106	120	68	14	513
2004	76	62	38	78	114	70	14	452
2005	73	59	38	66	105	56	9	406
2006	59	56	31	74	110	76	7	413

**Table 52**  
**Car and Van Drivers Involved in Injury Crashes by Age Group**  
**Year ending 31 December**

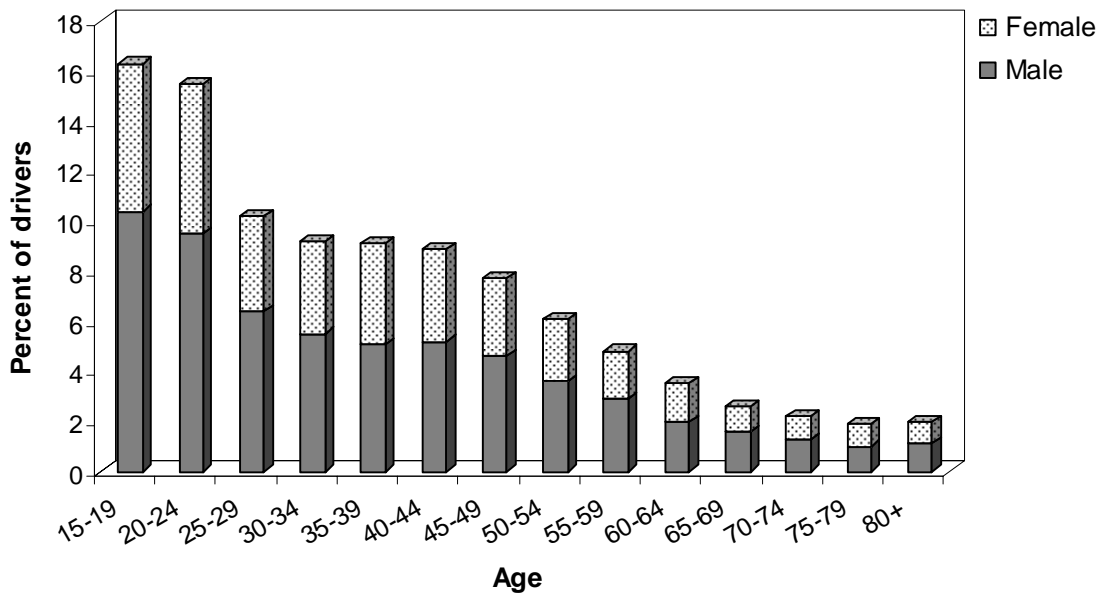
Year	15 to 19 Years	20 to 24 Years	25 to 29 Years	30 to 39 Years	40 to 59 Years	60 Years and over	Unknown and other	Total
1975	2968	2730	1768	2192	2808	1189	1606	15261
1976	2767	2530	1615	2019	2546	1103	1155	13735
1977	2625	2542	1559	1972	2369	1018	1367	13452
1978	2195	2101	1251	1765	1950	945	1169	11376
1979	1987	1911	1171	1608	1826	898	1072	10473
1980	2474	2306	1343	1953	2145	998	335	11554
1981	2266	2378	1401	1890	2075	1032	417	11459
1982	2376	2619	1443	1999	2237	1068	374	12116
1983	2431	2616	1533	2145	2307	1292	373	12697
1984	2578	2908	1708	2423	2583	1326	413	13939
1985	2750	3201	1966	2677	2906	1382	440	15322
1986	2926	3113	1986	2748	2881	1431	429	15514
1987	2840	2938	2145	2785	2824	1415	431	15378
1988	2284	2766	2126	2826	2963	1452	442	14859
1989	2202	2777	2037	2725	3032	1456	465	14694
1990	2445	2947	2262	3041	3194	1611	449	15949
1991	2306	2756	2109	3184	3244	1582	350	15531
1992	2127	2813	1968	2995	3174	1502	329	14908
1993	2034	2525	1880	2825	3060	1485	345	14154
1994	2302	2713	1995	3136	3259	1607	412	15424
1995	2380	2930	1988	3299	3480	1565	362	16004
1996	2008	2298	1691	2745	3113	1427	380	13662
1997	1878	1896	1541	2539	2787	1212	400	12253
1998	1729	1743	1423	2309	2645	1168	442	11459
1999	1624	1578	1336	2347	2714	1169	454	11222
2000	1417	1496	1166	2089	2507	1072	408	10155
2001	1669	1675	1237	2366	2987	1292	441	11667
2002	2133	1949	1432	2660	3481	1527	691	13873
2003	2146	2163	1348	2802	3743	1623	704	14529
2004	2168	2026	1382	2710	3639	1617	642	14184
2005	2285	2185	1431	2693	3952	1607	754	14907
2006	2397	2271	1501	2678	4041	1770	609	15267

NOTE: Fatal crashes are not included in this table (see table 51).

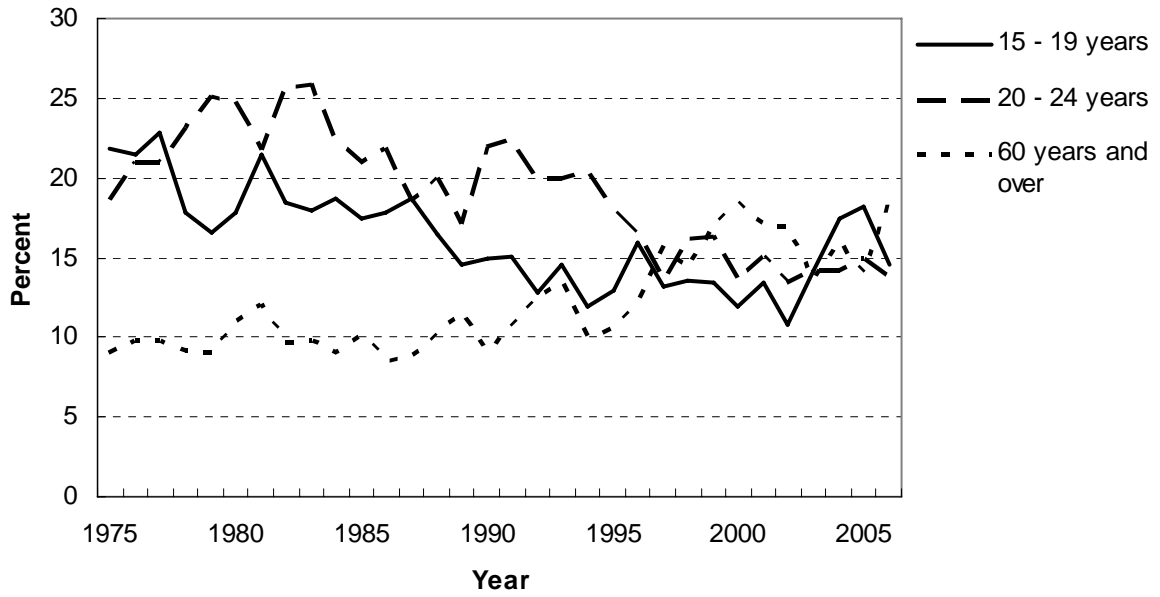
**Figure 30**  
**Percentage of Crash Involved Car Drivers by**  
**Age and Sex for Fatal Crashes**



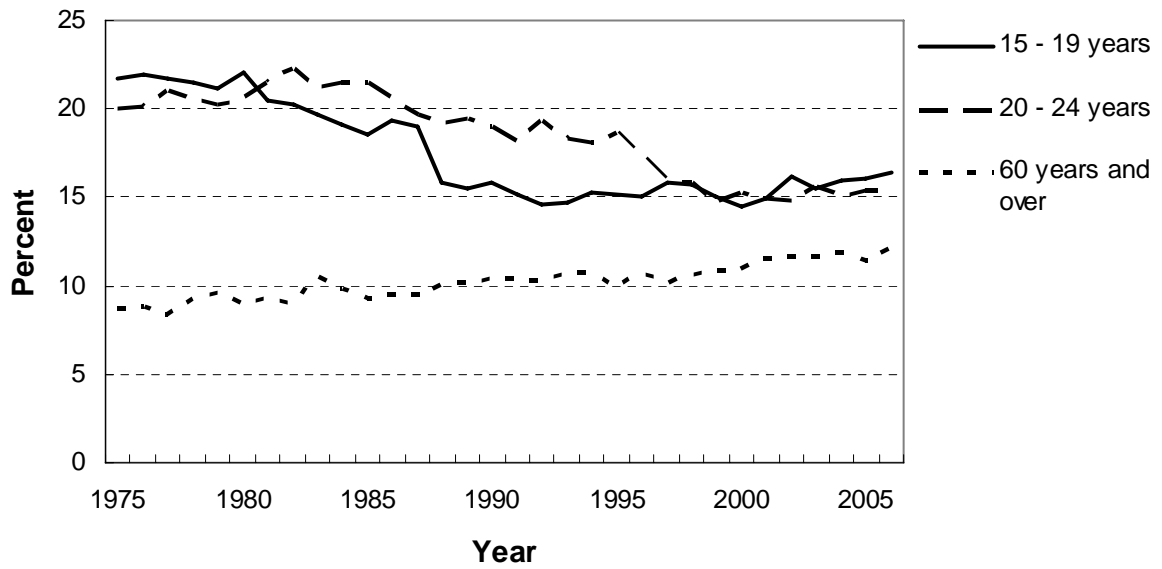
**Figure 31**  
**Percentage of Crash Involved Car Drivers by**  
**Age and Sex for Injury Crashes**



**Figure 32**  
**Percentage of Crash Involved Car Drivers**  
**in Selected Age Groups - Fatal Crashes**



**Figure 33**  
**Percentage of Crash Involved Car Drivers**  
**in Selected Age Groups - Injury Crashes**



**Table 53**  
**Car and Van Drivers Involved in Fatal Crashes by Age Group and Sex**  
**Year ending 31 December**

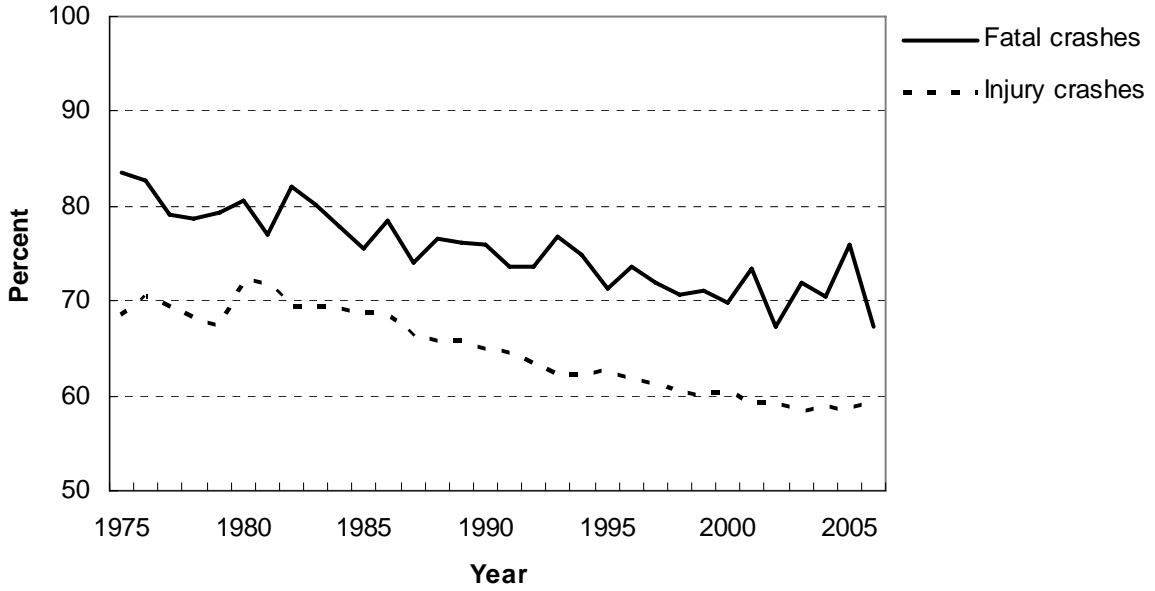
Year	15 to 29 Years	Percent Male	30 to 59 Years	Percent Male	60 Years and over	Percent Male	Total	Percent Male
1975	326	88	213	84	53	89	621	84
1976	292	86	195	87	53	68	567	83
1977	371	83	215	78	64	80	677	79
1978	334	85	221	75	56	82	635	79
1979	268	86	188	78	45	62	525	79
1980	307	83	169	80	58	74	554	81
1981	321	82	174	75	68	72	603	77
1982	338	84	209	83	59	75	627	82
1983	335	84	209	78	59	71	632	80
1984	339	81	226	74	56	82	639	78
1985	375	78	239	73	70	81	713	76
1986	380	80	266	78	60	78	741	78
1987	393	77	279	74	65	63	762	74
1988	348	81	250	75	68	66	685	77
1989	325	80	289	74	80	70	720	76
1990	349	77	250	76	59	73	694	76
1991	323	73	234	76	67	73	639	74
1992	280	78	242	74	74	66	624	74
1993	254	82	208	76	72	67	570	77
1994	255	77	227	72	54	74	557	75
1995	242	75	255	69	59	68	572	71
1996	232	77	208	71	60	73	521	74
1997	199	67	242	75	82	76	552	72
1998	215	76	230	67	74	69	547	71
1999	224	71	210	74	88	67	541	71
2000	162	72	222	72	87	66	492	70
2001	185	82	187	70	77	61	472	74
2002	153	71	187	65	69	71	427	67
2003	205	76	226	70	68	72	513	72
2004	176	73	192	68	70	71	452	70
2005	170	80	171	70	56	79	406	76
2006	146	65	184	69	76	71	413	67

**Table 54**  
**Car and Van Drivers Involved in Injury Crashes by Age Group and Sex**  
**Year ending 31 December**

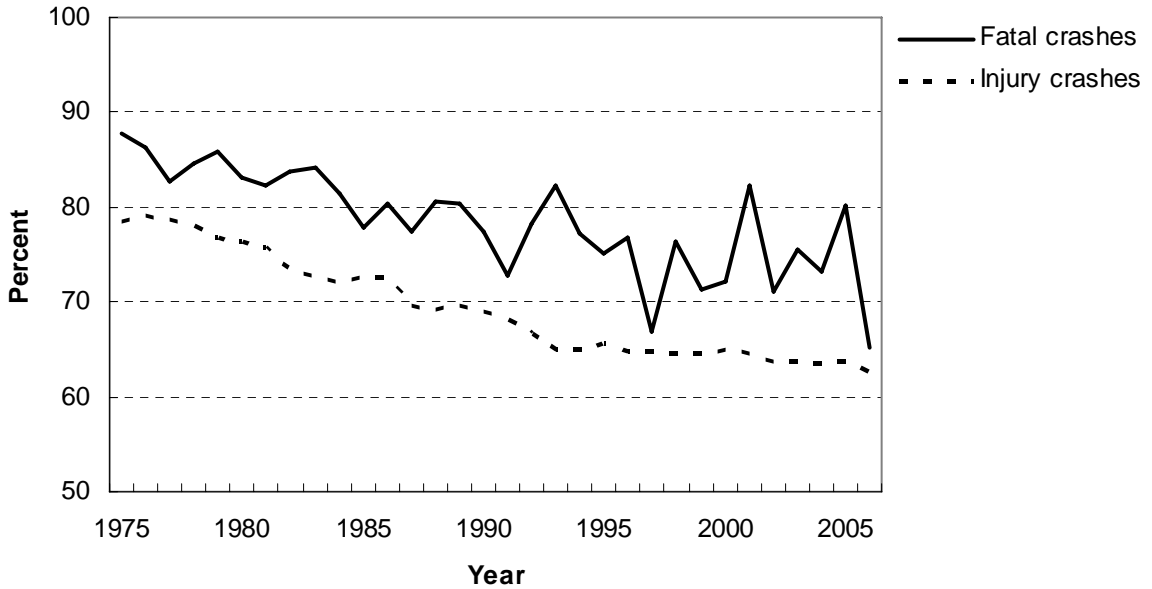
Year	15 to 29 Years	Percent Male	30 to 59 Years	Percent Male	60 Years and over	Percent Male	Total	Percent Male
1975	7466	79	5000	72	1189	73	15261	69
1976	6912	79	4565	72	1103	74	13735	70
1977	6726	79	4341	72	1018	74	13452	69
1978	5547	78	3715	70	945	70	11376	68
1979	5069	77	3434	69	898	70	10473	67
1980	6123	76	4098	69	998	69	11554	72
1981	6045	76	3965	70	1032	70	11459	72
1982	6438	74	4236	66	1068	69	12116	70
1983	6580	73	4452	68	1292	69	12697	69
1984	7194	72	5006	68	1326	68	13939	69
1985	7917	73	5583	66	1382	67	15322	69
1986	8025	73	5629	66	1431	69	15514	69
1987	7923	70	5609	64	1415	65	15378	66
1988	7176	69	5789	64	1452	64	14859	66
1989	7016	70	5757	63	1456	66	14694	66
1990	7654	69	6235	62	1611	65	15949	65
1991	7171	68	6428	62	1582	65	15531	65
1992	6908	67	6169	62	1502	65	14908	64
1993	6439	65	5885	61	1485	61	14154	62
1994	7010	65	6395	60	1607	65	15424	62
1995	7298	66	6779	61	1565	63	16004	63
1996	5997	65	5858	60	1427	63	13662	62
1997	5315	65	5326	60	1212	62	12253	61
1998	4895	65	4954	59	1168	61	11459	60
1999	4538	65	5061	58	1169	60	11222	60
2000	4079	65	4596	59	1072	62	10155	61
2001	4581	65	5353	57	1292	58	11667	59
2002	5514	64	6141	58	1527	60	13873	59
2003	5657	64	6545	57	1623	59	14529	59
2004	5576	64	6349	58	1617	60	14184	59
2005	5901	64	6645	57	1607	61	14907	59
2006	6169	63	6719	59	1770	58	15267	59

NOTE: Fatal crashes are not included in this table (see table 53).

**Figure 34**  
**Male Drivers as a Percentage of All Crash**  
**Involved Car Drivers - All Ages**



**Figure 35**  
**Male Drivers as a Percentage of All Crash**  
**Involved Car Drivers - Young Drivers 15-29 Years**



**Table 55**

**Percentage of Crash Involved Drivers  
with ALCOHOL/DRUGS Recorded as a Factor Contributing to the Crash  
Year ended 31 December 2006**

Age Group Years	----- Fatal Crashes -----				----- Injury Crashes -----			
	Car/Van	Truck	Motorcycle	Total	Car/Van	Truck	Motorcycle	Total
15 to 19	32	-	-	30	14	-	8	14
20 to 24	34	-	-	31	14	9	12	13
25 to 29	29	-	-	26	14	0	7	13
30 to 39	18	-	-	16	11	4	9	10
40 to 59	21	0	-	15	6	2	8	5
60 and over	9	-	-	8	2	0	5	2
<b>Total</b>	<b>22</b>	<b>4</b>	<b>13</b>	<b>19</b>	<b>10</b>	<b>3</b>	<b>8</b>	<b>9</b>

Note: Where the number of drivers is less than twenty the percentage is not calculated.

**Table 56**

**Percentage of Crash Involved Drivers  
with TOO FAST FOR CONDITIONS Recorded as a Factor Contributing to the Crash  
Year ended 31 December 2006**

Age Group Years	----- Fatal Crashes -----				----- Injury Crashes -----			
	Car/Van	Truck	Motorcycle	Total	Car/Van	Truck	Motorcycle	Total
15 to 19	48	-	-	47	22	-	13	21
20 to 24	38	-	-	37	17	9	19	17
25 to 29	23	-	-	29	12	7	8	11
30 to 39	15	-	-	18	7	11	11	8
40 to 59	14	2	-	11	5	9	8	5
60 and over	7	-	-	6	3	2	3	3
<b>Total</b>	<b>21</b>	<b>7</b>	<b>38</b>	<b>20</b>	<b>10</b>	<b>9</b>	<b>11</b>	<b>10</b>

Note: Where the number of drivers is less than twenty the percentage is not calculated.

**Table 57**

**Percentage of Crash Involved Drivers with  
FAILED TO GIVE WAY OR STOP Recorded as a Factor Contributing to the Crash  
Year ended 31 December 2006**

Age Group Years	----- Fatal Crashes -----				----- Injury Crashes -----			
	Car/Van	Truck	Motorcycle	Total	Car/Van	Truck	Motorcycle	Total
15 to 19	2	-	-	2	15	-	6	15
20 to 24	5	-	-	6	16	2	5	15
25 to 29	0	-	-	0	14	3	2	13
30 to 39	11	-	-	9	14	10	2	13
40 to 59	7	5	-	6	16	7	3	14
60 and over	21	-	-	19	26	12	5	25
<b>Total</b>	<b>9</b>	<b>4</b>	<b>4</b>	<b>8</b>	<b>16</b>	<b>8</b>	<b>4</b>	<b>15</b>

Note: Where the number of drivers is less than twenty the percentage is not calculated.

