



Rail safety statistics

QUARTERLY STATISTICS FOR THE PERIOD ENDED 30 JUNE 2010

Prepared by Research and Statistics, Ministry of Transport

Quarterly Statistical
Statement of Rail
Incidents
June 2010

Quarterly Statistical Statement of Rail Incidents from rail incident reports provided by KiwiRail. These reports cover a wide range of incidents including near misses. Only a relatively small number of reported incidents result in injury. The less serious incidents and near misses are useful for identifying potential safety issues.

Key points

This quarter there have been:

349	reported incidents, resulting in
2	deaths
12	injuries
1	death in level crossing incidents
2	injuries in level crossing incidents
1	death in person on track incidents
1	injury in person on track incidents
0	deaths in operating incidents
6	injuries in operating incidents

In the last 12 months there have been:

1431	reported incidents, resulting in
8	deaths
47	injuries
1	death in level crossing incidents
9	injuries in level crossing incidents
6	deaths in person on track incidents
2	injuries in person on track incidents
1	death in operating incidents
23	injuries in operating incidents

NOTES:

- The Rail Incident database was initiated during 1993 to collate information about rail incidents. Previously the only rail incident data collected at a national level was for level crossing motor vehicle crashes attended by the Police.
- These reports are provided to the MOT by KiwiRail, usually within 72 hours of the incident or when enough information has been compiled.
- Caution should be exercised in interpreting the statistics in this report in the light of the size of the numbers and the short time periods involved.

Rail incidents in New Zealand reported by rail operators

Rail incidents

General category incident type	Apr to Jun 2009	Apr to Jun 2010	Last 12 months
Collisions (between rail vehicles)	8	8	20
Derailments (of rail vehicles)	30	63	295
Fires (on trains/by track)	6	9	54
Level crossing incidents	24	33	133
Obstruction incidents	35	56	210
Operating incidents	72	118	410
Person on track incidents	19	20	106
Shunting incidents	5	6	26
Vandalism incidents	34	36	154
Other incidents	7	0	23
Total number of incidents	240	349	1,431

Casualties from rail incidents

General category incident type	Apr to Jun 2009			Apr to Jun 2010			Last 12 months		
	Deaths	Serious injuries	Minor injuries	Deaths	Serious injuries	Minor injuries	Deaths	Serious injuries	Minor injuries
Collisions (between rail vehicles)	-	-	-	-	-	-	-	-	-
Derailments (of rail vehicles)	-	-	-	-	-	-	-	-	-
Fires (on trains/by track)	-	-	-	-	-	1	-	-	1
Level crossing incidents	2	2	1	1	-	2	1	1	8
Obstruction incidents	-	-	-	-	-	-	-	-	-
Operating incidents	-	2	1	-	2	6	1	3	20
Person on track incidents	2	1	-	1	1	-	7	2	-
Shunting incidents	-	-	-	-	-	-	-	1	1
Vandalism incidents	-	-	-	-	-	-	-	-	2
Other incidents	-	-	1	-	-	-	-	1	7
Total number of casualties	4	5	3	2	3	9	9	8	39

Rail incidents by local government region

Local govt region	Apr to Jun 2009	Apr to Jun 2010	Last 12 months
Northland	1	11	27
Auckland	63	81	323
Waikato	33	41	162
Bay of Plenty	13	18	73
Gisborne	0	2	6
Hawke's Bay	5	7	32
Taranaki	7	12	43
Manawatu-Wanganui	24	26	130
Wellington	36	61	243
Nelson-Marlborough	3	8	38
West Coast	10	10	76
Canterbury	34	42	179
Otago	6	23	69
Southland	5	7	29
Total number of incidents	240	349	1,431

Note: total includes unknowns so region data may not add to column total.

Level crossing incidents

Definition: Incidents that occur at a level crossing (public or private) involving a motor vehicle, a pedestrian or a pedal cyclist. Incident reports can give information about the type of protection present at the level crossing.

Number of level crossing incidents

Incident type	Apr to Jun 2009	Apr to Jun 2010	Last 12 months
Level crossing incidents – collision with motor vehicle	10	7	33
Level crossing incidents – NEAR collision with motor vehicle	9	23	86
Level crossing incidents – collision involving a pedestrian or pedal cyclist	0	1	2
Level crossing incidents – NEAR collision involving a pedestrian or pedal cyclist	1	2	10
Level crossing incidents – other	4	0	2
TOTAL	24	33	133

Type of protection present and working for level crossing incidents

Protection type	Apr to Jun 2009		Apr to Jun 2010		Last 12 months	
	Present	Working	Present	Working	Present	Working
Flashing lights & bells (FLB)	3	2	7	7	21	21
Half arm barriers with lights and bells (HAB)	10	7	9	8	34	29
Stop signs/St Andrews signs	3	3	1	1	7	7
TOTAL	16	12	17	16	62	57
None/not known	8	-	16	-	71	-

Type of protection present and working for level crossing collision with motor vehicle incidents

Protection type	Apr to Jun 2009		Apr to Jun 2010		Last 12 months	
	Present	Working	Present	Working	Present	Working
Flashing lights & bells (FLB)	1	1	0	0	1	1
Half arm barriers with lights and bells (HAB)	1	1	1	1	2	2
Stop signs/St Andrews signs	3	3	1	1	7	7
TOTAL	5	5	2	2	10	10
None/not known	5	-	5	-	23	-

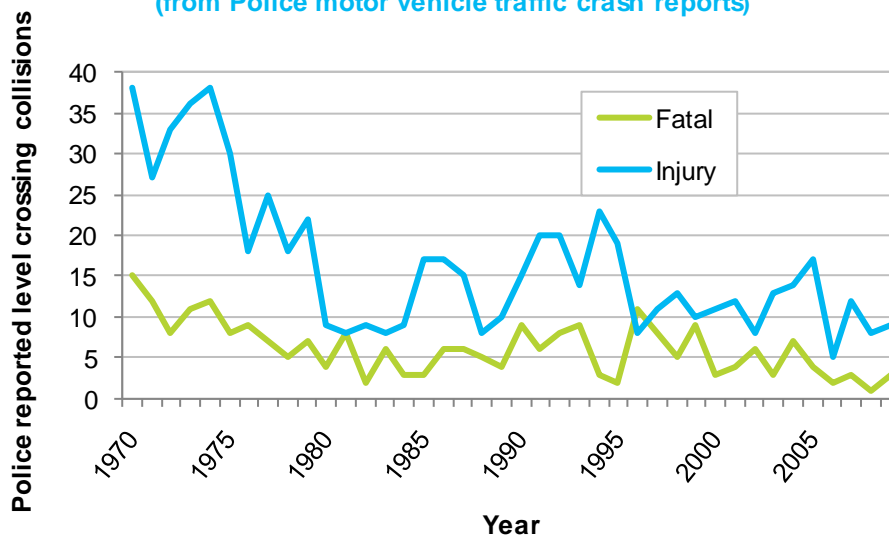
Crashes and casualties for level crossing collisions with motor vehicles (Crash Analysis System) ⁽¹⁾

Data derived from Police traffic crash reports of collisions with motor vehicles at level crossings.

Year	Crashes		Casualties		
	Total	Fatal	Deaths	Serious injuries	Minor injuries
2000	14	3	4	7	8
2001	16	4	4	0	18
2002	14	6	6	4	7
2003	16	3	3	10	7
2004	21	7	8	7	11
2005	21	4	4	8	14
2006	7	2	2	6	1
2007	15	3	5	6	13
2008	10	1	1	5	8
2009	12	3	4	8	6

Level crossing collisions by crash severity (1970–2009)

(from Police motor vehicle traffic crash reports)



Note: Pre–1980 data are derived from historical records.

(1) The Crash Analysis System (CAS) is a web-based tool available to registered users that manages, analyses and maps traffic crash and related data, largely based on Police traffic crash reports (TCR) forwarded to the NZ Transport Agency (NZTA).

Obstruction incidents

Definition: Incidents where an object obstructing the rail corridor has been struck by a train or nearly been struck by a train. This excludes level crossing collisions.

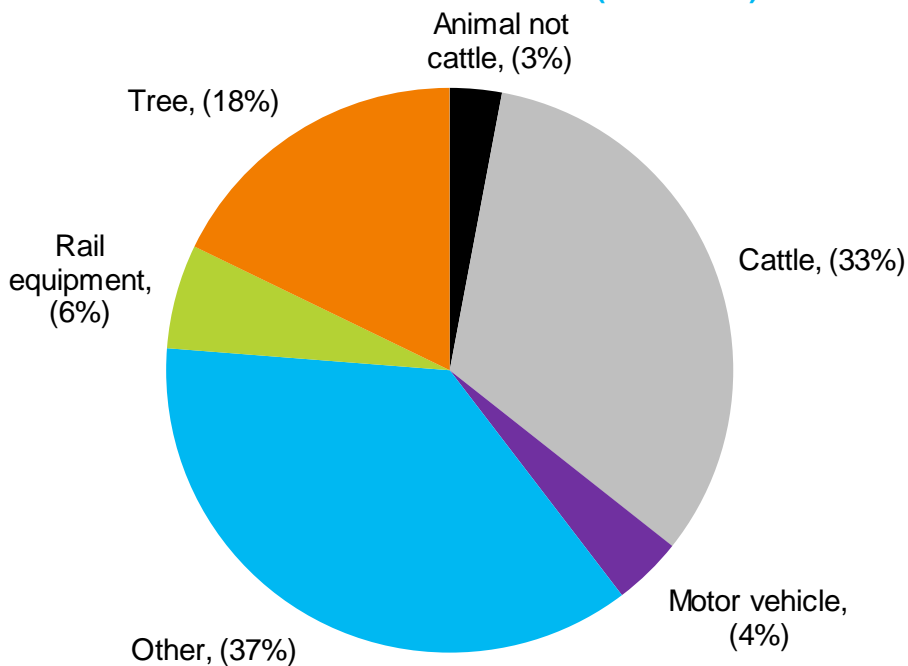
Overall there were 210 obstruction incidents recorded for the last 12 months, with 30 of these being near collisions.

Obstruction 'collision with object' incidents by type of object struck

Type of object struck	Apr to Jun 2009	Apr to Jun 2010	Last 12 months
Animal not cattle	2	0	4
Cattle	14	11	53
Motor vehicle	0	3	12
Rail equipment	2	7	26
Tree	1	4	27
Other	13	12	56
TOTAL	32	39	180

Note: Total will include unknown objects

Type of object struck by a train by percentage of reported obstruction – collision incidents (2007–2009)



Note: percentages have been rounded and may not add up to 100%

Person on track incidents

Definition: Incidents where a person on track (defined as being on or obstructing the rail corridor NOT at a level crossing) has been struck by a train, nearly struck by a train or observed to be present without a train being in the vicinity. These incidents relate to members of the public trespassing in the rail corridor. Rail operator staff or contractors are included in the “Operating incidents” category.

Number of incidents

Incident type	Apr to Jun 2009	Apr to Jun 2010	Last 12 months
Person on track – collision incidents	2	3	11
Person on track – near collision incidents	9	17	86
Person on track – other incidents	8	0	9
TOTAL	19	20	106

Historical time series of reported casualties by calendar year for person on track-collisions

Year	Deaths	Serious injuries	Minor injuries
2000	17	2	1
2001	11	2	3
2002	10	5	2
2003	14	5	3
2004	5	0	1
2005	9	0	1
2006	14	7	1
2007	3	6	1
2008	7	3	1
2009	7	2	1

Vandalism incidents

Definition: Incidents where an object has been thrown at a train, an object has been deliberately placed on the track, or rail property has been altered deliberately or stolen.

Number of incidents

Incident type	Apr to Jun 2009	Apr to Jun 2010	Last 12 months
Vandalism – object thrown at train incidents	24	22	105
Vandalism, other incidents	10	14	49
TOTAL	34	36	154

Vandalism – object thrown at train incidents

Object thrown at train	Apr to Jun 2009	Apr to Jun 2010	Last 12 months
Bottles	-	1	7
Rocks or stones	22	12	77
Unknown objects	1	8	14
Other	1	1	7
TOTAL	24	22	105

Fire incidents

Definition: Incidents where a fire either trackside by the rail corridor or on board a rail vehicle has occurred.

Type of object struck	Apr to Jun 2009	Apr to Jun 2010	Last 12 months
Trackside fire	2	6	39
Fire on board a rail vehicle	4	3	15
Total	6	9	54

Derailment incidents

Definition: Incidents where a train or rail vehicle has derailed while moving along a rail track. The type of rail vehicle that derailed is identified as best as possible from rail incident reports. Note: Many of these derailments occur in rail yards during loading and shunting operations.

Derailments by type of rail vehicle (including bogies)

Type of rail vehicle	Apr to Jun 2009		Apr to Jun 2010		Last 12 months	
	On mainline	In yard	On mainline	In yard	On mainline	In yard
Hi Rail vehicle	0	0	0	0	0	7
Lead Bogie	0	2	2	4	12	37
Locomotive	1	9	2	13	6	51
Shunt	0	1	0	10	0	35
Trailing Bogie	3	3	3	3	8	37
Wagon	2	9	3	23	15	87
Other	0	0	0	0	0	1
TOTAL	6	24	10	53	41	255

Note: A Hi rail vehicle is a general purpose rail capable truck, utility, car, bus or van, used to transport people, equipment or materials to a site, or to carry out on-rail tasks such as inspection, grease dispensing, weed spraying, drain cleaning etc. For more detail, please go to <http://www.kiwirail.co.nz/glossary-of-terms.html>

Operating incidents

Definition: Incidents that occur during the course of rail operations in motion but excludes those categorised as derailments, collisions or shunting incidents.

Operating incident by incident type

Incident type	Apr to Jun 2009	Apr to Jun 2010	Last 12 months
Illegal passenger on train incidents	2	4	17
Infrastructure incidents	11	19	124
Insecure load incidents	0	5	15
Level crossing alarm failure incidents	1	4	6
Near collision incidents	0	3	4
Rolling stock incidents	2	0	-
SPAD related incidents	17	16	54
Track warrant irregularity incidents	1	3	5
Track occupancy irregularity incidents	4	26	44
Other incidents	34	38	141
TOTAL	72	118	410

Note: SPAD = Signals passed at danger.

Time series casualty data

Deaths and reported injuries for motor vehicle crashes at a level crossing in the Crash Analysis System (CAS)

		Year									
		2000	2001	2002	2003	2004	2005	2006	2007	2008	2009
Motor vehicle level crossing casualties	Deaths	4	4	6	3	8	4	2	5	1	4
	Injuries	15	18	11	17	18	22	7	19	13	14

Note: The number of level crossing deaths in the Crash Analysis System may be lower than the number in the Rail Incident Database as the Crash Analysis System includes only official road deaths. Deaths determined by the coroner to be a result of medical events or suicide are not included as official road deaths. Reported injury numbers may differ between the two systems. The Crash Analysis System includes road crashes attended and reported by Police.

Deaths and reported injuries for grouped rail incident types in the Rail Incident Database

		Year									
		2000	2001	2002	2003	2004	2005	2006	2007	2008	2009
Motor vehicle level crossing casualties	Deaths	6	4	8	4	7	5	2	6	3	4
	Injuries	17	39	14	10	16	18	6	14	8	8
Pedestrian level crossing casualties	Deaths	1	1	2	2	4	3	2	1	1	1
	Injuries	1	0	0	1	0	0	0	0	2	0
Pedal cyclist level crossing casualties	Deaths	0	0	0	0	0	0	0	0	0	0
	Injuries	0	0	1	1	1	0	0	0	0	0
Person on track casualties	Deaths	17	11	10	14	5	9	14	3	7	7
	Injuries	3	5	7	8	1	1	8	7	4	3
Other casualties - Members of the public	Deaths	2	0	0	1	0	0	0	0	2	1
	Injuries	20	13	18	24	22	14	22	1	4	13
Other casualties - Rail employees	Deaths	3	0	2	0	0	0	0	1	0	0
	Injuries	11	13	13	31	14	19	17	11	12	10
All rail incident deaths and injuries	Deaths	29	16	22	21	16	17	18	11	13	13
	Injuries	52	70	53	75	54	52	53	33	30	34

Statistics prepared by the Research & Statistics Section, Ministry of Transport. Enquiries regarding these statistics may be directed to Research & Statistics, Ministry of Transport, PO Box 3175, Wellington or by email on info@transport.govt.nz.

For further information on crash statistics see *Motor Vehicle Crashes in New Zealand*, the annual statistical statement produced by the Ministry of Transport. This publication is available in secondary school libraries and many public libraries and online at <http://www.transport.govt.nz/>