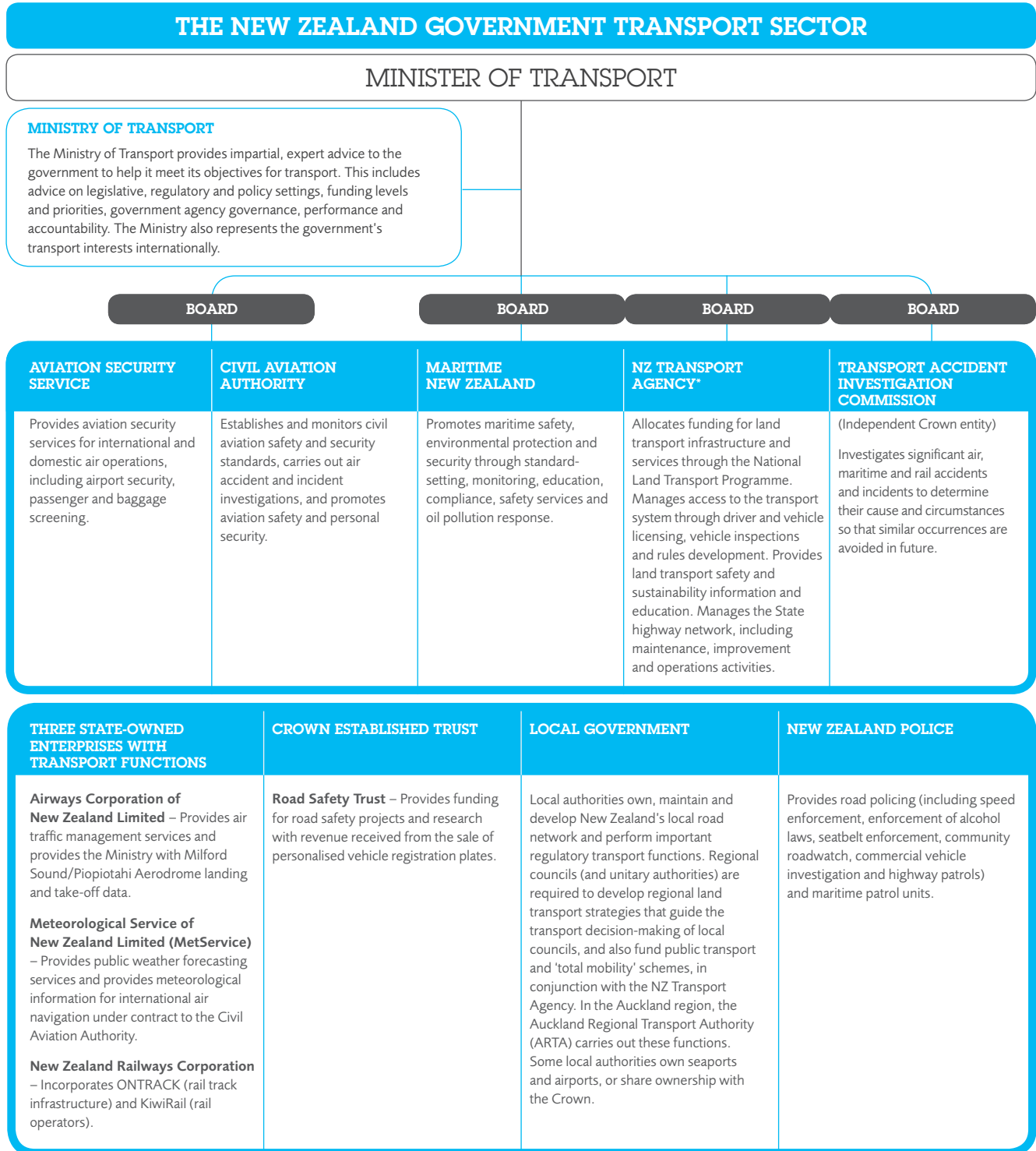


The New Zealand government transport sector includes the Minister of Transport, the Ministry of Transport, five Crown agencies, three state-owned enterprises and one Crown established trust. These agencies and their functions are explained in the table below.



\* Land Transport New Zealand and Transit New Zealand merged to become the New Zealand Transport Agency (NZ Transport Agency) on 1 August 2008.