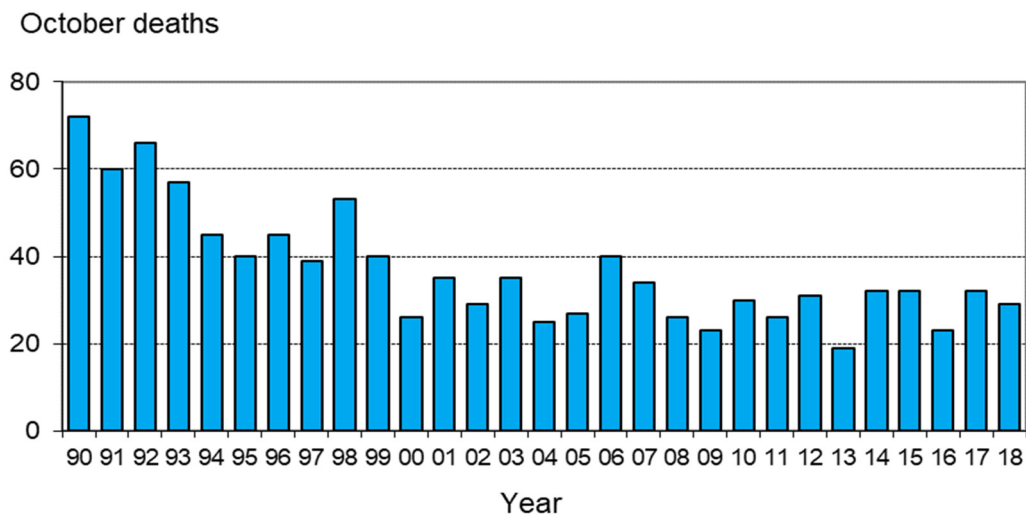


Monthly road crash statistics update

October Road Deaths (2018)

The data presented here are provisional. Crash data as at 10th January 2019.

- Twenty-nine people died on New Zealand roads in October.
- This is three fewer than the number which died in October 2017 and is one more than the average number of October road deaths over the past five years.



- To the end of October this year, 306 people have died on New Zealand roads. This is six fewer deaths than as at the same time last year.
- In the 12 months to the end of October 2018, 372 people died on our roads. This is three fewer than the 12 months to the end of October 2017.
- During October: sixteen of the deaths were car or van drivers plus five passengers, one was a truck driver, five were motorcyclists, and two were pedestrians.
- Twenty-five of the twenty-nine deaths were in open road crashes. Two deaths occurred while performing an overtaking manoeuvre, fifteen deaths were in head-on crashes, ten deaths were in single vehicle crashes in which a driver lost control of the vehicle or ran off the road, and two deaths were pedestrians.
- Five of the twenty-nine deaths were in collisions involved a truck.
- Of the twenty-two vehicle occupants who died, seven were not restrained at the time of the crash.

Deaths and Police reported injuries by age, sex and type of road user

Deaths are for the 12 months to the end of October 2018. Reported injuries are for the 12 months to the end of May 2018.

Note: Preliminary fatal crash reports are submitted within 24 hours of a crash related death. Full injury crash reports are submitted only after the crash investigations are completed, so there is a lag in the reporting of injury crashes.

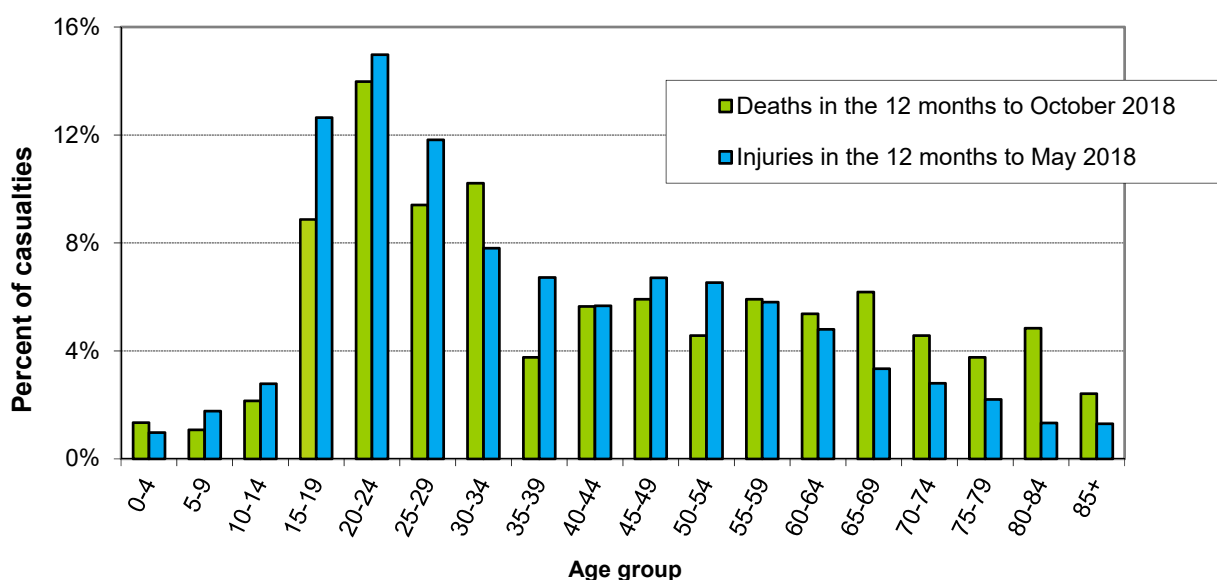
Road user type by sex

Sex	Drivers		Passengers		Motorcyclists		Pedestrians		Cyclists		Other		Total	
	Killed	Injured	Killed	Injured	Killed	Injured	Killed	Injured	Killed	Injured	Killed	Injured	Killed	Injured
Male	131	4454	39	1347	47	1140	27	525	6	582	1	33	251	8081
Female	50	3502	47	1770	6	233	17	455	1	194	0	9	121	6163
Total	181	7956	86	3117	53	1373	44	980	7	776	1	42	372	14244
%male	72%	56%	45%	43%	89%	83%	61%	54%	86%	75%	100%	79%	67%	57%

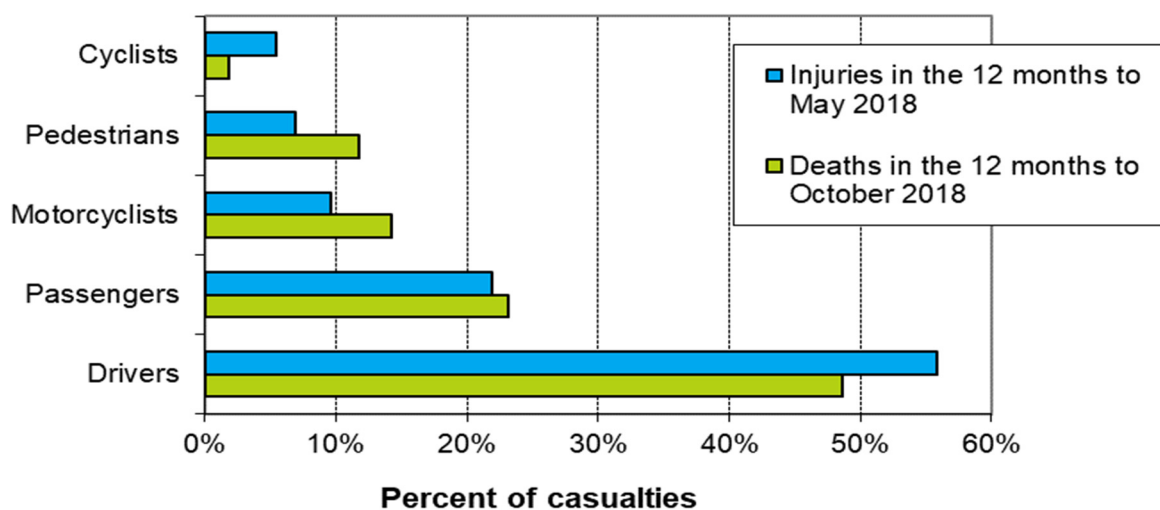
Road user type by age group

Age group	Drivers		Passengers		Motorcyclists		Pedestrians		Cyclists		Other		Total	
	Killed	Injured	Killed	Injured	Killed	Injured	Killed	Injured	Killed	Injured	Killed	Injured	Killed	Injured
Under-15	0	14	14	423	0	15	2	215	1	91	0	19	17	777
15-24	45	2096	25	1124	10	346	4	187	1	125	0	4	85	3882
25-34	41	1729	17	530	8	286	7	112	0	100	0	1	73	2758
35-44	17	1144	2	251	8	178	6	68	2	100	0	1	35	1742
45-54	18	1093	4	243	12	286	4	82	1	155	0	2	39	1861
55-64	20	883	7	209	10	184	3	109	1	102	1	4	42	1491
65-74	18	542	8	137	4	50	9	78	1	54	0	3	40	864
75+	22	429	9	109	1	15	9	98	0	21	0	8	41	680
Unknown	0	26	0	91	0	13	0	31	0	28	0	0	0	189
Total	181	7956	86	3117	53	1373	44	980	7	776	1	42	372	14244

Deaths and reported injuries by age group

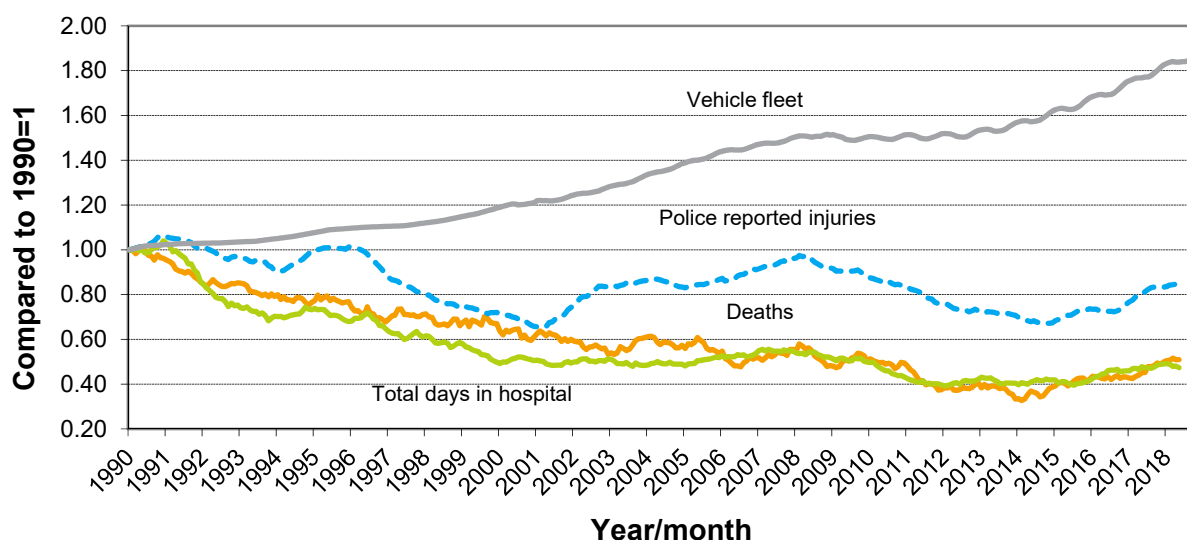


Types of road users killed and injured



Trends

Road crash casualties and vehicle fleet compared to 1990



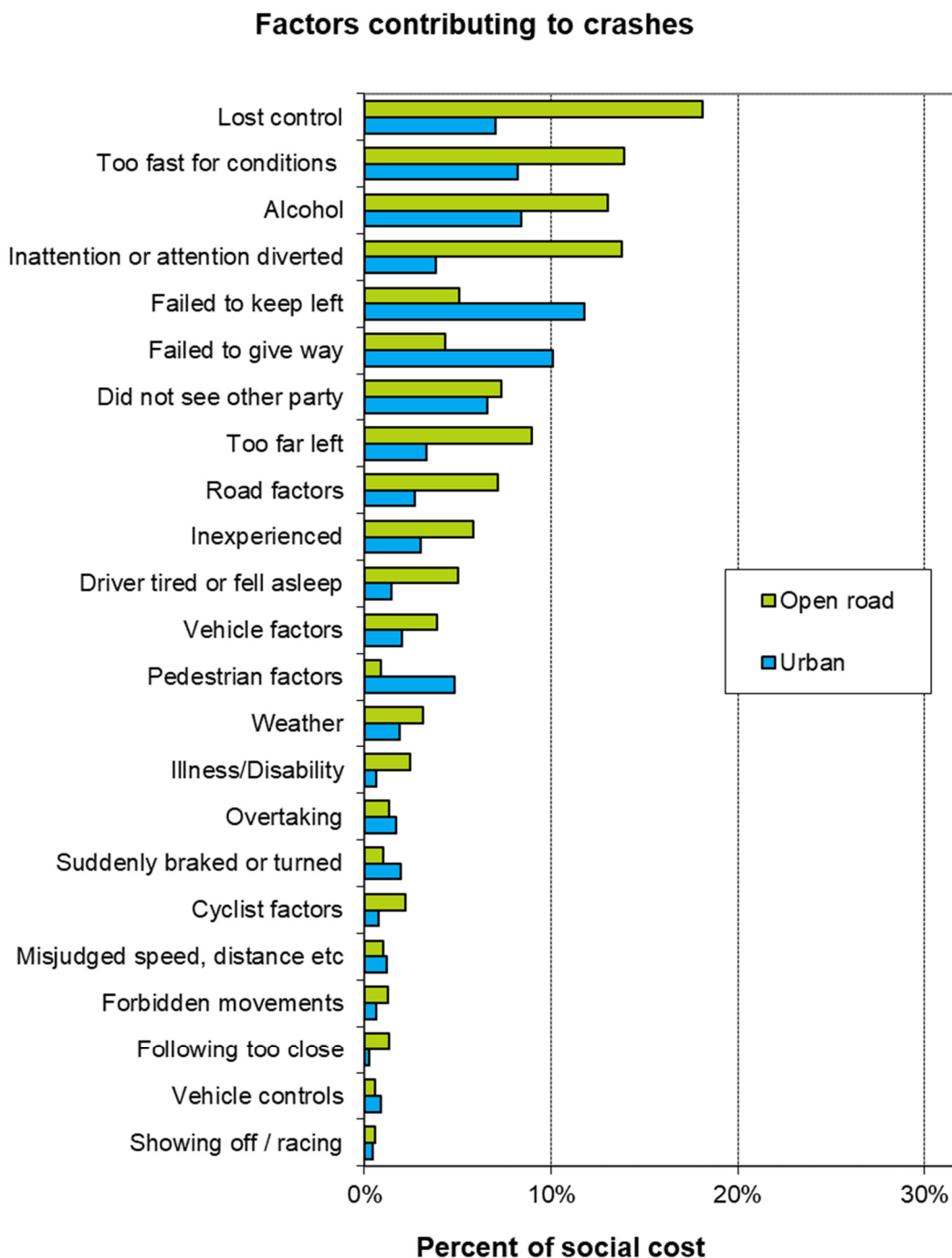
Since 1990, the number of vehicles on the road has increased by 87 percent while Police reported injuries have dropped by 14 percent, road deaths have dropped by 49 percent and the number of days spent in hospital as a result of road crashes has dropped by 53 percent.

Crash outcomes and road user behaviour

Road Crash Data	2008	2009	2010	2011	2012	2013	2014	2015	2016	2017	2018
Deaths											
Number of road deaths	366	384	375	284	308	253	293	319	327	378	372
Deaths per 10,000 vehicles	1.1	1.2	1.2	0.88	0.95	0.77	0.86	0.91	0.89	0.99	0.94
Deaths per 100,000 people	8.6	8.9	8.6	6.4	6.9	5.7	6.5	6.9	7.0	7.9	7.6
Injuries											
Reported injuries	15317	14625	14031	12574	12122	11781	11219	12270	12625	13881	14091
Number hospitalised (all discharges)	7570	7590	7360	6780	7070	7150	6940	7310	8030	8710	8848
Number hospitalised for over 1 day	3244	3042	2909	2707	2794	2886	2716	2902	3062	3370	3109
Number hospitalised for over 3 days	2210	2051	1918	1801	1872	1886	1752	1905	1999	2213	2026
Behavioural Measures											
Speed											
Rural speed, % over 100 km/h	30%	29%	29%	31%	25%	25%	22%	23%	n/a	n/a	n/a
Rural speed, mean (km/h)	96.6	96.3	96.2	96.5	95.6	95.7	95.3	95.7	n/a	n/a	n/a
Rural speed, 85th percentile (km/h)	103	103	103	103	102	102	101	101	n/a	n/a	n/a
Alcohol											
Number of drivers killed with excess alcohol	59	66	68	48	49	38	31	51	50	n/a	n/a
Percent of drivers killed with excess alcohol	28%	28%	30%	26%	27%	23%	18%	25%	23%	n/a	n/a
Occupant Restraints											
Seat belts worn by adults, front	95%	95%	96%	96%	96%	n/a	97%	n/a	97%	n/a	n/a
Seat belts worn by adults, rear	87%	87%	88%	90%	n/a	n/a	92%	n/a	n/a	n/a	n/a
Child restraints used, 0-4 years	90%	91%	93%	n/a	92%	n/a	93%	n/a	93%	n/a	n/a
Cycle helmets											
Cycle helmets worn, weekday	92%	92%	93%	93%	92%	n/a	n/a	94%	n/a	n/a	n/a

Note: Road deaths for 2018 are for the 12 months to the end of October 2018. Reported injuries and Hospitalisations are for the 12 months to the end of May 2018.

Factors contributing to crashes – ranked by social cost*



Notes: Crash data for the 12 months to the end of October 2018.

Since there can be several contributing factors for a single crash the figures represented in this graph add to more than 100%.

Alcohol data is not comparable to earlier years due to changes in the crash reporting process.

* Social cost calculations include loss of life or life quality, loss of output due to injuries, medical and rehabilitation costs, legal and court costs and property damage.