



**MINISTRY OF TRANSPORT**  
TE MANATŪ WAKA

# Aviation on-time performance: May 2026

## Contents

1.	Introduction .....	4
2.	About OTP.....	4
3.	Coverage.....	4
4.	Reports.....	7
5.	Definitions .....	7
6.	Caveats and limitations of the data.....	8
7.	Industry OTP for domestic regional routes in May 2026 .....	9
8.	Airlines' OTP on domestic regional routes in May 2026 .....	10
9.	Industry OTP for domestic jet routes in May 2026 .....	13
10.	Airlines' OTP for domestic jet routes in May 2026.....	15
11.	Industry OTP for trans-Tasman routes in May 2026 .....	17
12.	Airlines' OTP for trans-Tasman routes in May 2026.....	19
13.	Individual domestic regional routes in May 2026.....	26
14.	Domestic OTP by region in May 2026.....	36
15.	Individual domestic jet routes in May 2026 .....	37
16.	Individual trans-Tasman routes in May 2026 .....	40

## 1. Introduction

The Ministry of Transport (the Ministry) reports monthly on airlines' on-time performance (OTP).

A key part of the Ministry's stewardship role is to use data and evidence to build greater transparency of aviation system performance.

The Ministry thanks the airlines for providing the data that made this report possible.

The Ministry will continue to improve this report and welcomes feedback from users.

## 2. About OTP

Various factors, many outside airlines' control, can affect whether a flight arrives or departs on time.

**Safety and security are paramount and will always take priority over timeliness.**

Some airlines have provided commentary on the top factors that affected their OTP each month. These are included with each airline's data.

Examples of factors that can affect OTP for flights include:

- adverse meteorological conditions affecting flights, such as high winds, fog, low visibility, snow, heavy rain, volcanic ash
- seasonal weather variations
- technical issues with the aircraft
- congested airspace
- airport tarmac traffic
- late arrival of other aircraft, passengers or connecting crew
- staffing issues across the aviation ecosystem (including airlines, airports, air traffic control)
- security concerns or processing delays
- supplier challenges related to fuelling, catering, digital outages, and baggage systems which can affect processing and loading of luggage
- delays in processing international passengers through border checks.

## 3. Coverage

### Domestic regional services

Sections 7, 8, and 13 of this report include domestic flights that are not covered in the domestic jet sections of this report.

In May 2026, the routes included in the domestic regional sections were served by the following domestic airlines:

- Air New Zealand
- Golden Bay Air

- Sunair Aviation.

Air Chathams, Barrier Air, Originair, and Sounds Air have previously provided data, but declined to provide data for this month, so we have not reported on their OTP.

Unlike the reporting on domestic jet services and trans-Tasman services, reporting on domestic regional services includes routes where there is only one airline operating on that route. There were 84 domestic regional routes operated by participating airlines during the period reported.

#### *Operational factors affecting domestic regional OTP*

When comparing OTP across domestic regional flights, other operational factors should be considered. These are in addition to those listed in section 2 of this report ('About OTP', on page 4).

Most flights covered in the domestic regional sections of this report are flown by turboprop aircraft, but jet and piston aircraft may also be used. Aircraft size presents its own unique set of challenges:

- smaller aircraft may have quicker turnarounds and access to more airfields but are often more sensitive to weather conditions. Turboprops (commonly used on regional routes) experience more disruption from weather than jets
- larger aircraft tend to operate within more complex networks, increasing exposure to flow-on delays.

Airport type also plays a role:

- major hubs are more prone to congestion
- uncontrolled airfields allow for faster, more flexible operations.

Weather exposure further affects OTP, particularly for routes into alpine or coastal regions.

Differences in how OTP is captured also mean that data across carriers is not always directly comparable. This is described further in section 4 'Reports' below.

### **Domestic jet services**

OTP is reported for jet services on New Zealand domestic routes between Auckland, Hamilton, Wellington, Christchurch, Queenstown and Dunedin.

This report covers the following domestic airlines:

- Air New Zealand
- Jetstar.

The domestic jet sections of this report allow for comparison between similar services. In these sections, we have only included routes where there is more than one airline operating jets on that route.

There were 14 routes (7 return services) that met this definition during the period reported:

1. Auckland - Christchurch - return
2. Auckland - Dunedin - return
3. Auckland - Queenstown - return
4. Auckland - Wellington - return
5. Christchurch - Hamilton - return
6. Wellington - Christchurch - return
7. Wellington - Queenstown - return.

### **Domestic OTP by region**

Section 14 of this report breaks down domestic OTP by region. It covers all aircraft types.

The routes included in this section are flown by the same airlines as for the domestic regional sections, with the addition of Jetstar. This month's OTP by region is based on data from Air New Zealand, Jetstar, Golden Bay and Sunair.

### **How Air New Zealand's domestic OTP data is treated**

Air New Zealand uses a mix of jet and turboprop aircraft on its domestic routes.

- All Air New Zealand turboprop services are covered in the domestic regional section.
- Jet services are covered in the domestic jet section if they meet the criteria for inclusion (that is, they are jet services between Auckland, Hamilton, Wellington, Christchurch, Dunedin and Queenstown on routes served by more than one airline).
- Any other Air New Zealand jet services are included in the domestic regional section. For example, the domestic regional section includes Air New Zealand routes that are flown by jet aircraft, but that do not meet the criteria for inclusion in the domestic jet section of this report because the routes are served only by Air New Zealand jet services.
- Section 14 – which breaks down OTP by region – includes **all** Air New Zealand and Jetstar domestic services regardless of aircraft type.

### **Trans-Tasman**

OTP is reported for services on routes between New Zealand and Australia.

This report includes data from the following airlines:

- Air New Zealand
- China Airlines
- China Eastern Airlines
- Emirates
- Jetstar
- Qantas
- Solomon Airlines
- Virgin Australia.

LATAM Airlines stopped operating the trans-Tasman route in November 2025.

China Eastern Airlines suspended their trans-Tasman flights from 10 May 2026 through October 2026.

In the trans-Tasman sections of this report, we have only included routes where there is more than one airline operating on that route. There were 32 routes that met this definition during the period reported.

## 4. Reports

Data was supplied by the airlines and collated by the Ministry.

Airlines that provided data for domestic jet and trans-Tasman routes use Aircraft Communication Addressing and Reporting System (ACARS) to electronically measure OTP.

Airlines flying domestic regional routes use various methods to record their OTP, including manual recording of data.

After the initial data collection, aggregate reports are subject to internal audit by participating airlines prior to publication.

## 5. Definitions

Term	Definition
<b>On time arrival</b>	A flight arrival is counted as “on time” if it arrived at the gate before 15 minutes after the scheduled arrival time shown in the carrier’s schedule. Neither diverted nor cancelled flights count as on time.
<b>On time departure</b>	A flight departure is counted as “on time” if it departs the gate before 15 minutes after the scheduled departure time shown in the carrier’s schedule.
<b>Cancellation</b>	<p>A flight removed from service within 7 days of scheduled departure is regarded as a cancellation.</p> <p>The cancellation window starts at midnight 7 days before the flight.</p> <ul style="list-style-type: none"><li>• For example, if the flight is scheduled to depart at 09:00 on Monday and is cancelled at or after 00:00 on the previous Tuesday, it will be counted as a cancellation.</li><li>• If it is cancelled at or before 23:59 on the Monday prior, it will not be counted as a cancellation.</li></ul>

<b>Term</b>	<b>Definition</b>
<b>Diversion</b>	<p>A diversion is when an aircraft departs from its scheduled departure port but arrives at a different airport to the scheduled port.</p> <p>Diverted services are recorded against the scheduled route as an on-time or late departure (depending on their actual departure time) and as a late arrival.</p> <p>Any subsequent flight from the diversion airport to the scheduled port and serving only diverted passengers is excluded from OTP reporting.</p>
<b>On time departure percentage</b>	The percentage of on-time departures is measured against the number of departures operated on any particular sector.
<b>On time arrival percentage</b>	The percentage of on-time arrivals is measured against the number of arrivals operated on any particular sector.
<b>Cancellation percentage</b>	The percentage of cancellations is measured against the number of services scheduled on any particular sector.

## 6. Caveats and limitations of the data

For domestic jet and trans-Tasman services, airlines may sometimes measure departure time in slightly different ways.

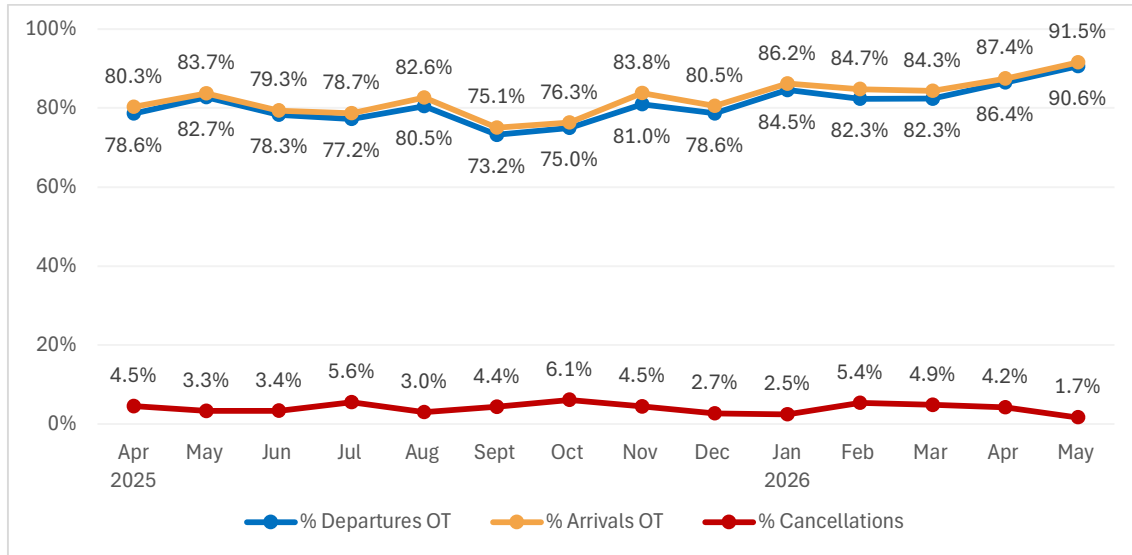
There are differences in how the regional airlines record departure and arrival times. For example, some record departure time as when the engine starts and others from when the aircraft pushes back from the gate. Inconsistencies in how OTP is measured mean that data across carriers is not always directly comparable.

Care should be taken when interpreting OTP for airlines that fly 20 or fewer sectors per month, as any single delay or cancellation can shift their overall percentage considerably. This is especially relevant for some regional airlines with relatively low numbers of scheduled flights. Small changes in the number of cancellations can result in large movements in the reported cancellation percentage. In these cases, the percentages should be interpreted with caution and alongside the absolute number of cancellations and any relevant context, such as weather-related disruptions. This is because these percentages may not be statistically robust indicators of underlying performance.

## 7. Industry OTP for domestic regional routes in May 2026

For May 2026, four regional airlines declined to provide data, which means that only Air New Zealand, Golden Bay Air, and Sunair Aviation's data is available for this period. Therefore, no industry-wide data is provided this month.

### Domestic regional routes (Air NZ, Golden Bay Air, and Sunair Aviation combined)

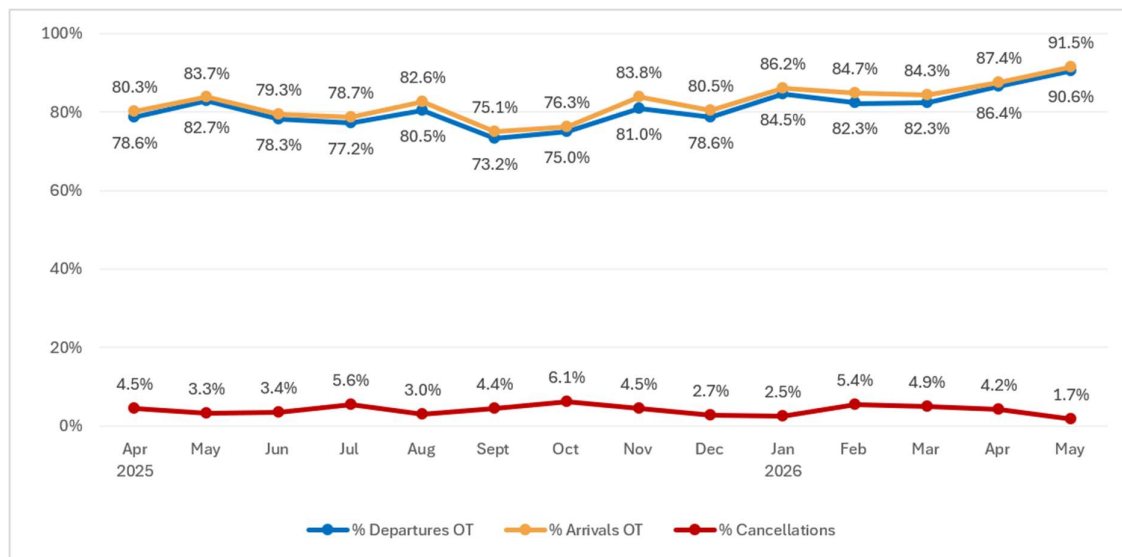


## 8. Airlines' OTP on domestic regional routes in May 2026

### Air New Zealand

Air New Zealand's OTP for its domestic regional routes was 90.6 percent for on-time departures and 91.5 percent for on-time arrivals. The cancellation rate for the month was 1.7 percent.

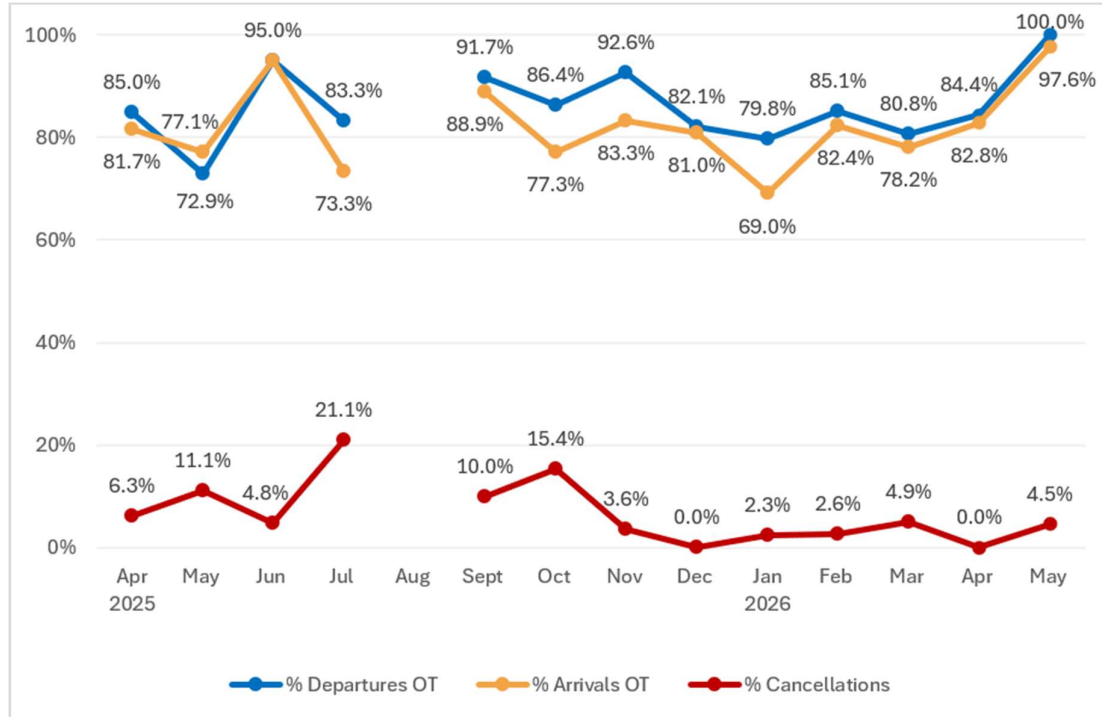
Disruption was mainly linked to intermittent weather events rather than broad-based operational disruption. Fog (including freezing fog) and low cloud affected parts of the domestic and regional network, particularly across southern and regional ports. These conditions created some flow-on impacts for customers. A smaller number of services were also affected by external operational constraints at key ports, including air traffic management and airport infrastructure-related delays.



## Golden Bay Air

Golden Bay Air's OTP for its domestic regional routes was 100 percent for on-time departures and 97.6 percent for on-time arrivals for May 2026. The cancellation rate for the month was 4.5 percent.<sup>1</sup>

Golden Bay Air reported that cancellations were due to adverse weather conditions.



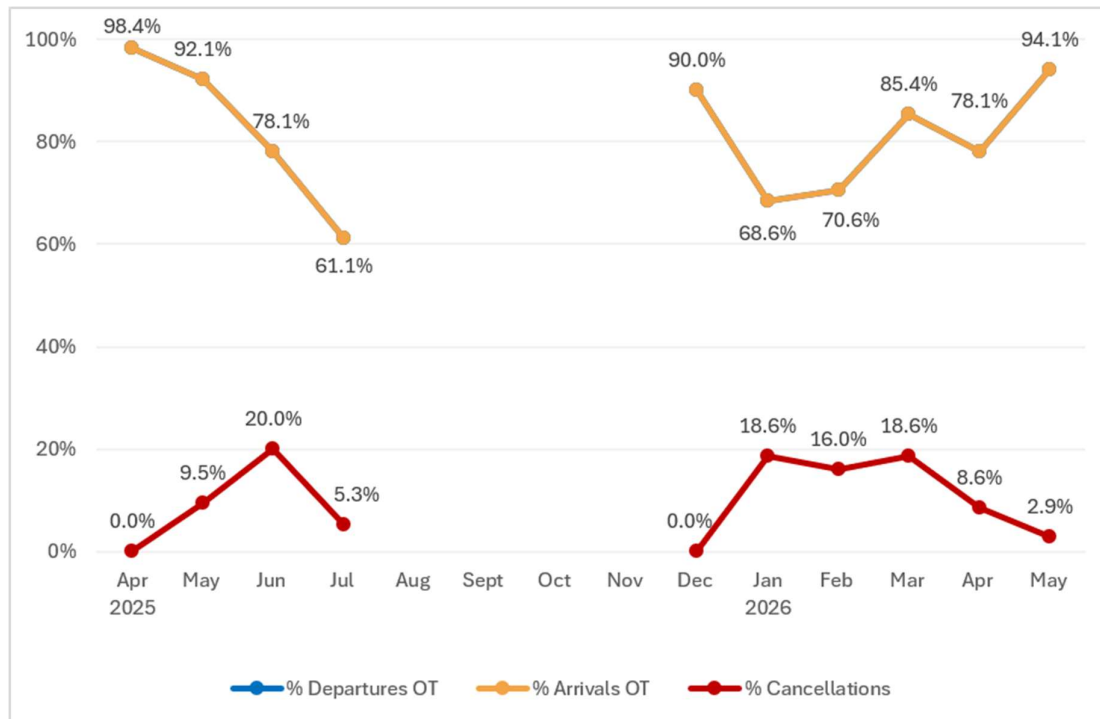
<sup>1</sup> Golden Bay Air had its scheduled annual winter close-down period from late July to the end of August 2025.

## Sunair Aviation

Sunair Aviation resumed operations in December 2025 following a pause in services since July 2025. In May, Sunair Aviation's OTP for its domestic regional routes was 94.1 percent for both on-time departures and arrivals. The cancellation rate for the month was 2.9 percent.

Sunair operates small 4- to 6-seater aircraft. If no passengers book a flight on a given day, the service is not operated. Flights advertised but not operated due to no bookings have been excluded from Sunair's OTP data.

Please note that on-time departure and arrival performance for this airline are identical, so the chart displays a single line (orange) representing both measures.



## 9. Industry OTP for domestic jet routes in May 2026

For May 2026, OTP for all domestic jet routes where more than one airline operated jets on that route (see page 5) was 87.1 percent for on-time departures and 88.0 percent for on-time arrivals. The cancellation rate for the month was 0.8 percent.

The route with the highest OTP for departures in May 2026 was Auckland – Queenstown, with 92.5 percent of flights departing on time. Queenstown – Auckland had the highest OTP for arrivals, with 91.8 percent of flights arriving on time.

Cancellations were highest on the Christchurch – Hamilton and Hamilton – Christchurch routes, both with 3.2 percent of services cancelled.

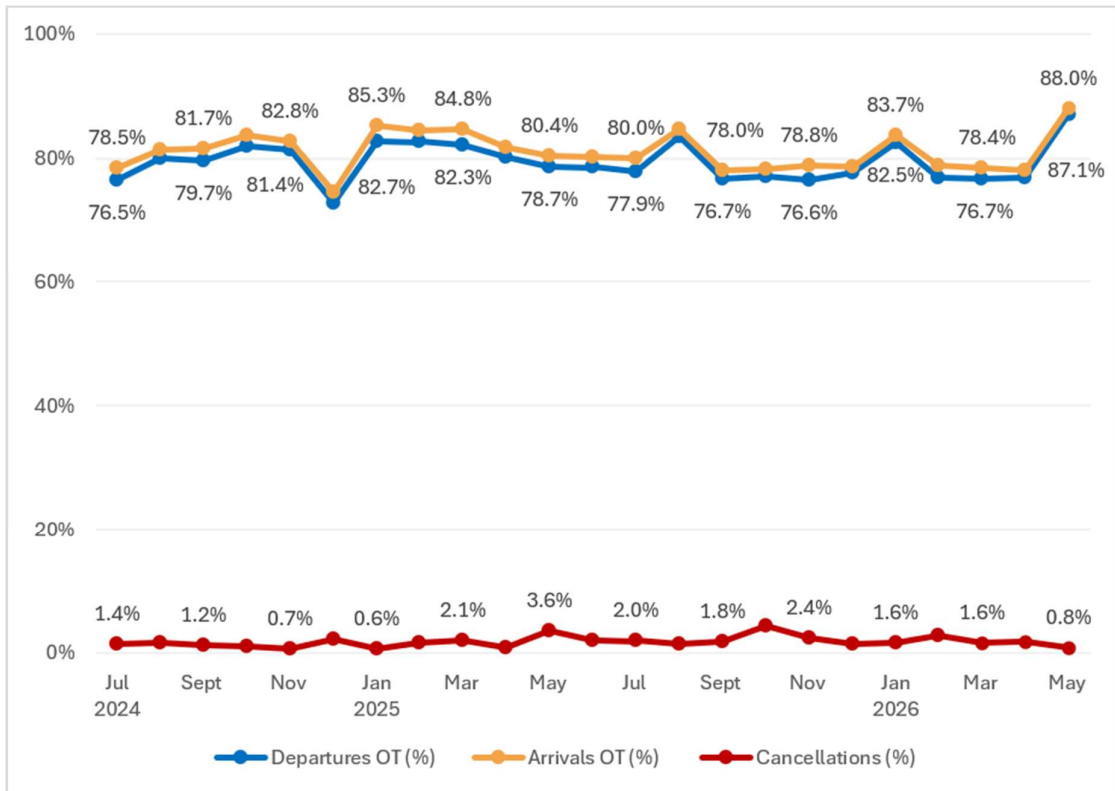
### Both airlines' OTP, domestic jets, May 2026

Sectors		On-Time Departures		On-Time Arrivals		Cancellations	
Scheduled	Flown	No.	%	No.	%	No.	%
3,719	3,690	3,213	87.1%	3,248	88.0%	29	0.8%

### Domestic jet routes ranked by OTP, May 2026

On-Time Departures		On-Time Arrivals		Cancellations	
Route	%	Route	%	Route	%
Auckland - Queenstown	92.5%	Queenstown - Auckland	91.8%	Christchurch - Hamilton	3.2%
Queenstown - Auckland	89.6%	Auckland - Queenstown	91.2%	Hamilton - Christchurch	3.2%
Auckland - Wellington	89.0%	Auckland - Wellington	90.8%	Christchurch - Wellington	1.8%
Christchurch - Wellington	88.4%	Christchurch - Wellington	89.3%	Wellington - Christchurch	1.7%
Auckland - Christchurch	87.8%	Wellington - Auckland	87.8%	Dunedin - Auckland	1.6%
Wellington - Auckland	87.4%	Wellington - Queenstown	87.3%	Christchurch - Auckland	1.2%
Wellington - Queenstown	87.3%	Christchurch - Auckland	87.2%	Auckland - Christchurch	1.1%
Auckland - Dunedin	86.7%	Auckland - Christchurch	86.7%	Queenstown - Auckland	0.6%
Wellington - Christchurch	85.8%	Auckland - Dunedin	85.9%	Auckland - Queenstown	0.3%
Queenstown - Wellington	85.7%	Wellington - Christchurch	85.8%	Wellington - Auckland	0.2%
Dunedin - Auckland	84.1%	Dunedin - Auckland	85.7%	Wellington - Queenstown	0.0%
Christchurch - Auckland	83.5%	Queenstown - Wellington	85.7%	Auckland - Wellington	0.0%
Christchurch - Hamilton	76.7%	Christchurch - Hamilton	78.3%	Queenstown - Wellington	0.0%
Hamilton - Christchurch	75.0%	Hamilton - Christchurch	76.7%	Auckland - Dunedin	0.0%
<b>Overall %</b>	<b>87.1%</b>		<b>88.0%</b>		<b>0.8%</b>

**Domestic jet OTP trends, both airlines, all reported routes**

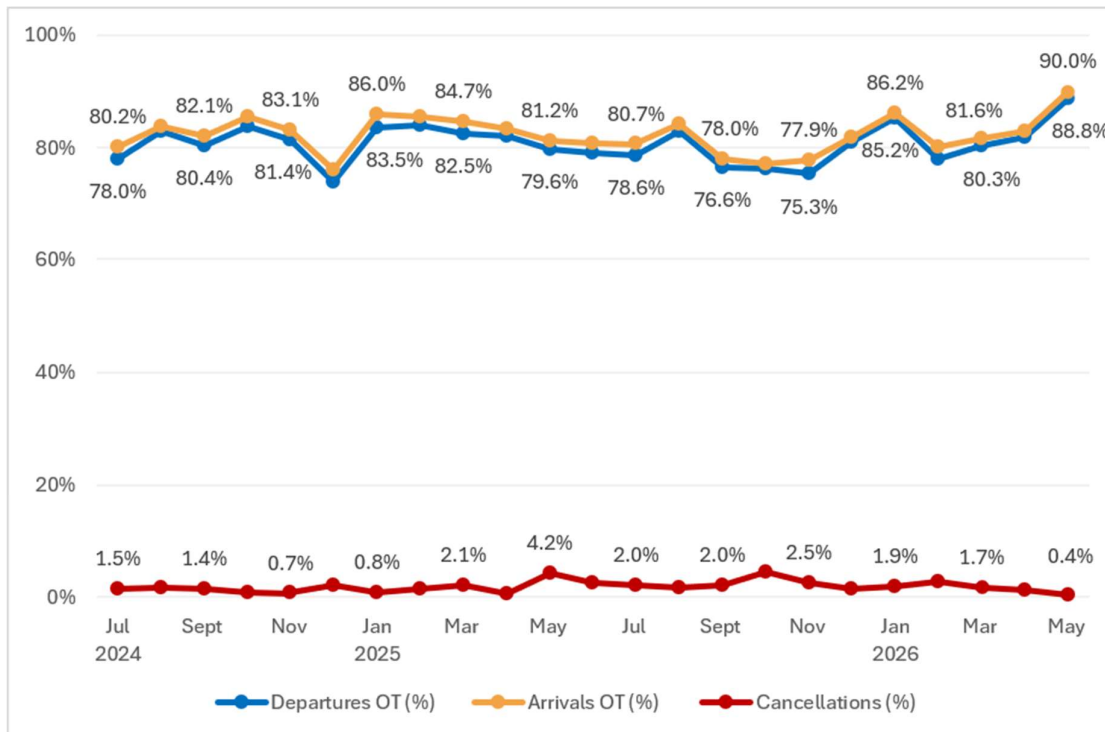


## 10. Airlines' OTP for domestic jet routes in May 2026

In May 2026, Air New Zealand recorded 88.8 percent for on-time departures, and Jetstar 83.2 percent. For on-time arrivals, Air New Zealand recorded 90.0 percent, and Jetstar recorded 83.7 percent. Air New Zealand's cancellation rate was 0.4 percent and Jetstar's was 1.6 percent.

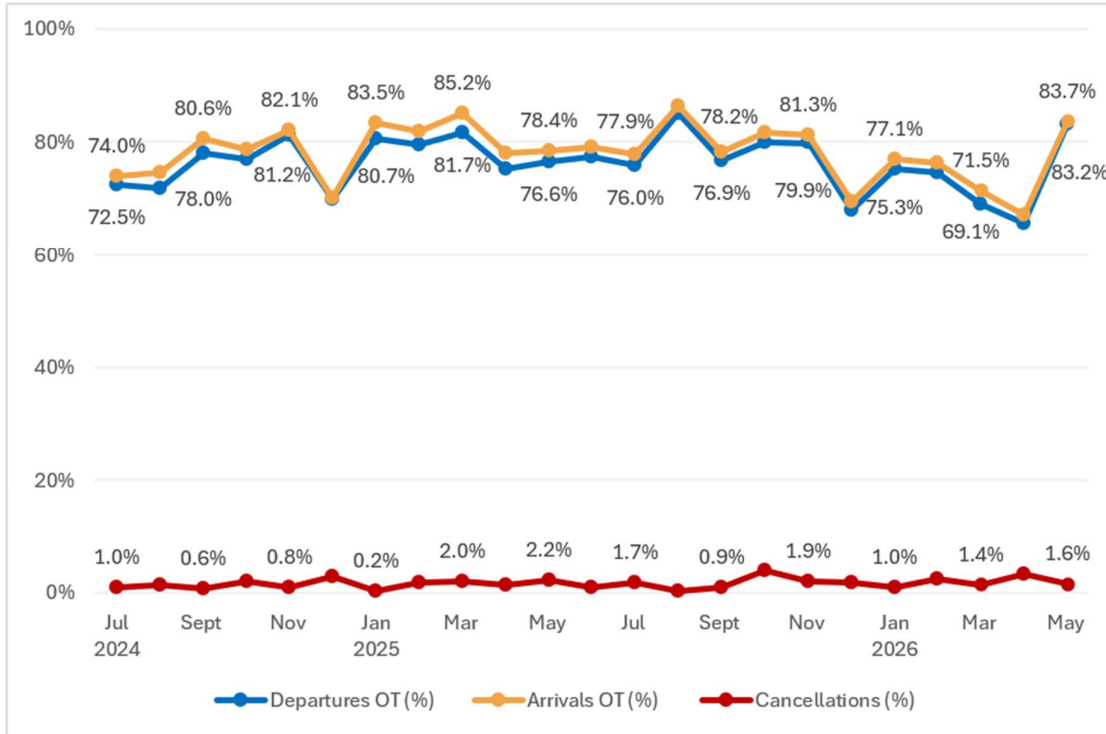
### Air New Zealand

Air New Zealand reported that its domestic jet services were affected by fog, freezing fog and strong wind conditions, particularly around Christchurch, Dunedin and Queenstown. A smaller number of services also experienced airport operating constraints, including infrastructure-related delays at Auckland.



## Jetstar

Jetstar reported that delays were mainly caused by weather, boarding-related issues, and air traffic control ground movement holding at Auckland Airport.



## 11. Industry OTP for trans-Tasman routes in May 2026

More detail on the number of flights and the routes flown by each airline can be found in section 16.

For May 2026, OTP across all trans-Tasman routes covered by this report was 77.9 percent for on-time departures and 80.1 percent for on-time arrivals. The cancellation rate for the month was 0.8 percent.

Perth - Auckland was the route with the highest OTP for departures in May 2026, with 95.9 percent. Christchurch - Brisbane had the highest OTP for arrivals, with 91.9 percent.

Cancellations were highest on the Sydney - Christchurch route in May 2026, with 2.4 percent of services cancelled.

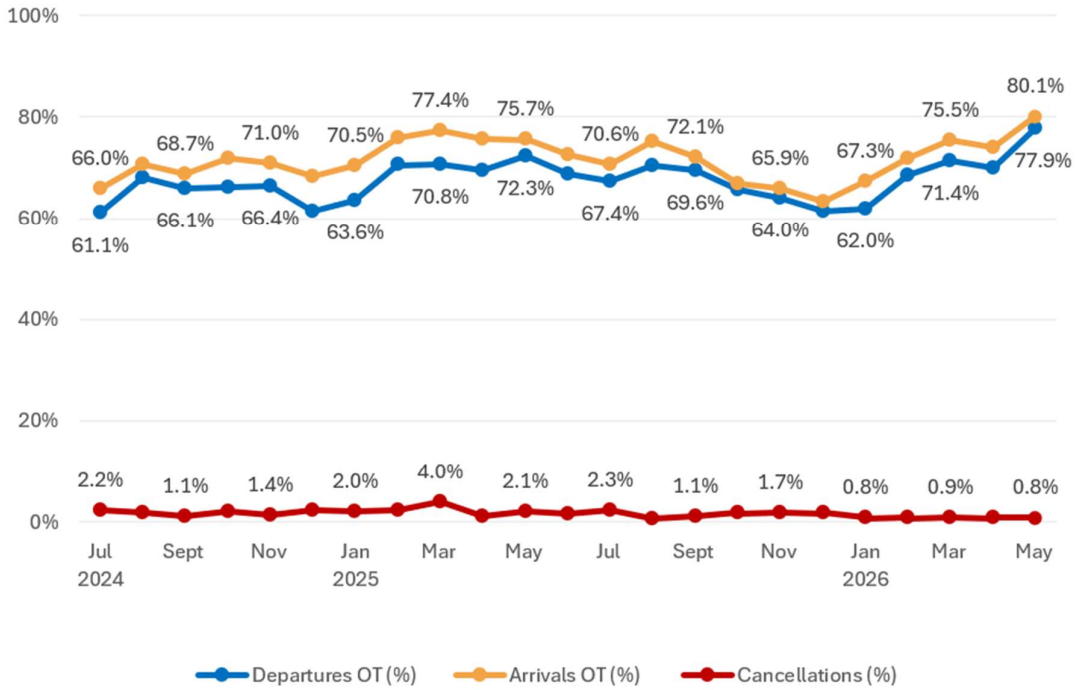
### All airlines' OTP, May 2026

Sectors		On-Time Departures		On-Time Arrivals		Cancellations	
Scheduled	Flown	No.	%	No.	%	No.	%
3,251	3,226	2,514	77.9%	2,585	80.1%	25	0.8%

### Top 5 trans-Tasman routes for OTP, May 2026

On-Time Departures		On-Time Arrivals		Cancellations	
Route	%	Route	%	Route	%
Perth - Auckland	95.9%	Christchurch - Brisbane	91.9%	Sydney - Christchurch	2.4%
Brisbane - Queenstown	93.5%	Gold Coast - Auckland	91.3%	Perth - Auckland	2.0%
Auckland - Gold Coast	89.9%	Wellington - Melbourne	91.2%	Auckland - Perth	2.0%
Gold Coast - Auckland	89.9%	Auckland - Brisbane	90.7%	Queenstown - Sydney	1.8%
Wellington - Melbourne	87.7%	Auckland - Adelaide	90.5%	Wellington - Melbourne Melbourne - Wellington	1.7%

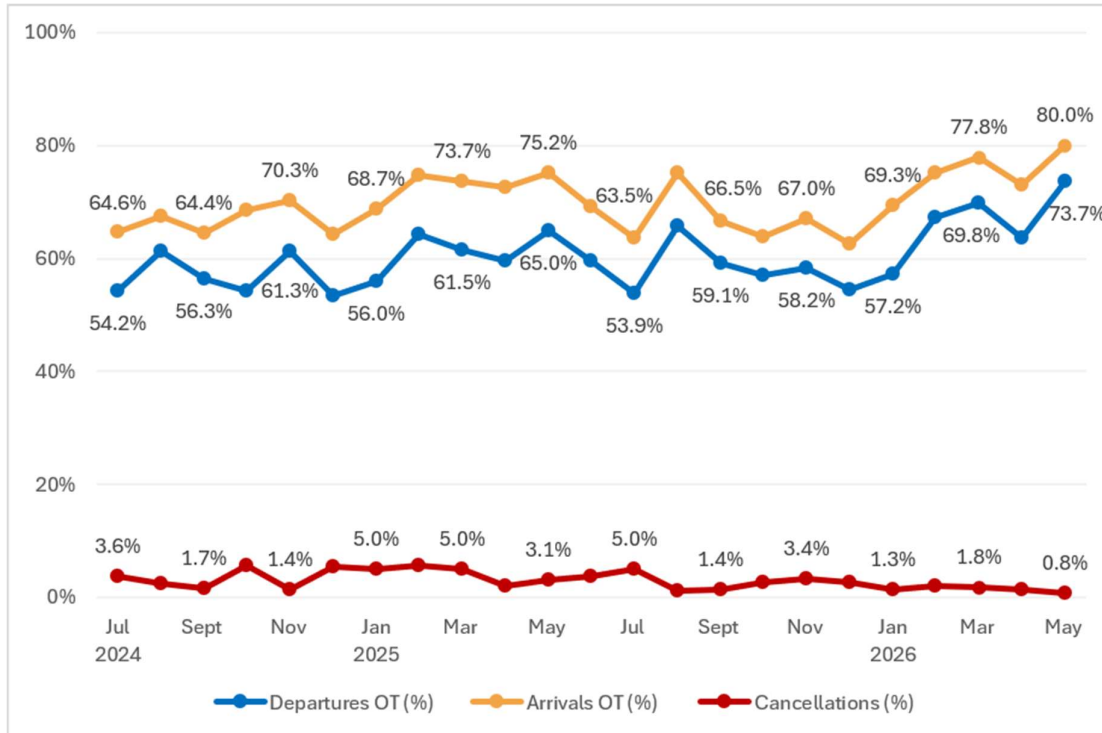
### Trans-Tasman OTP trends, all airlines, all reported routes



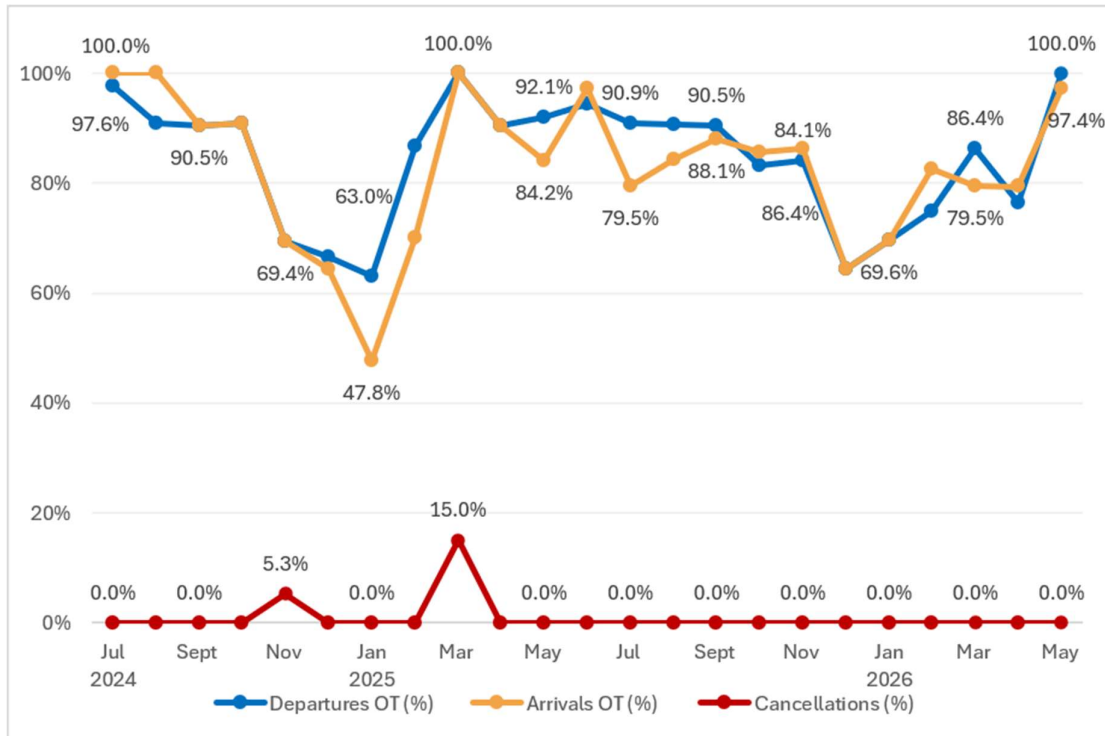
## 12. Airlines' OTP for trans-Tasman routes in May 2026

### Air New Zealand

Air New Zealand reported that some trans-Tasman services were affected by delays earlier in the operating day, which flowed through to later or return sectors, along with a smaller number of external operational constraints at key ports. These included air traffic management and airport infrastructure-related delays.

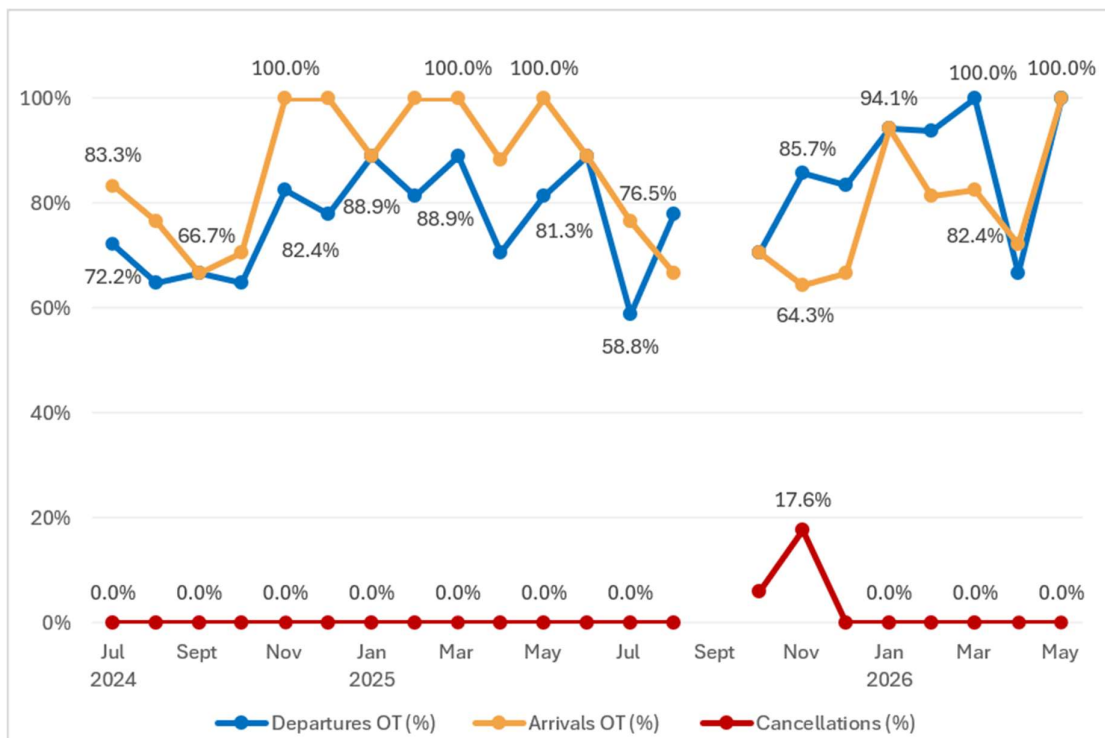


## China Airlines



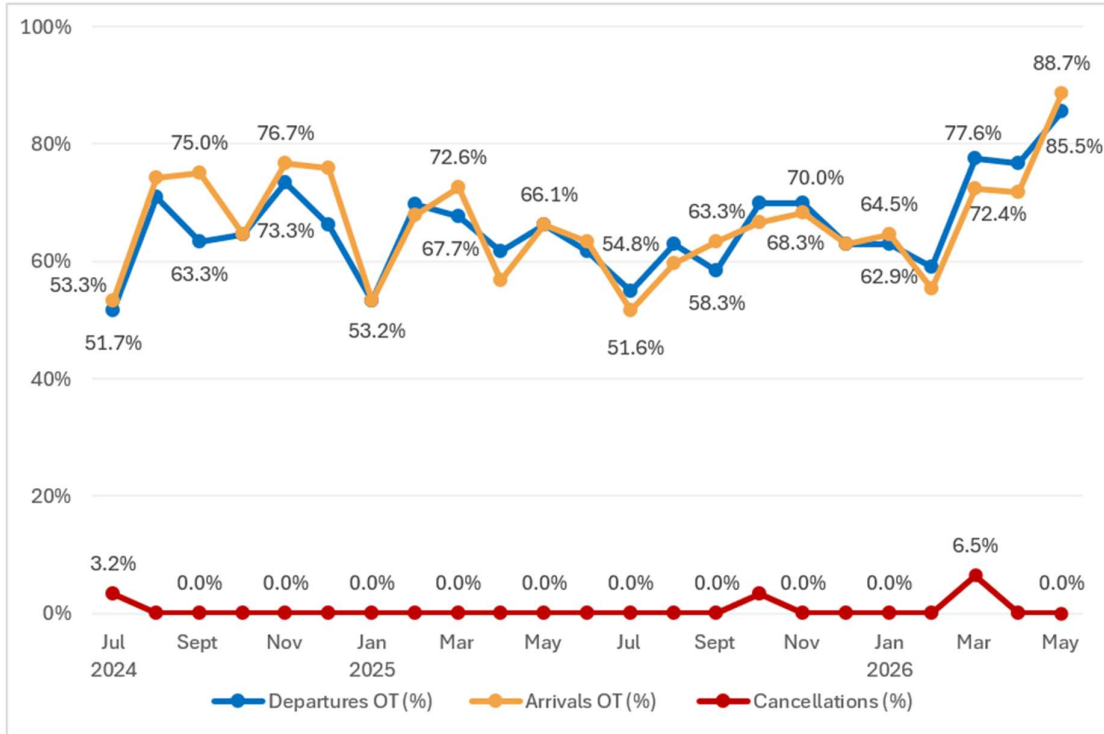
## China Eastern Airlines

China Eastern Airlines suspended its trans-Tasman flights from 10 May 2026 through October 2026.



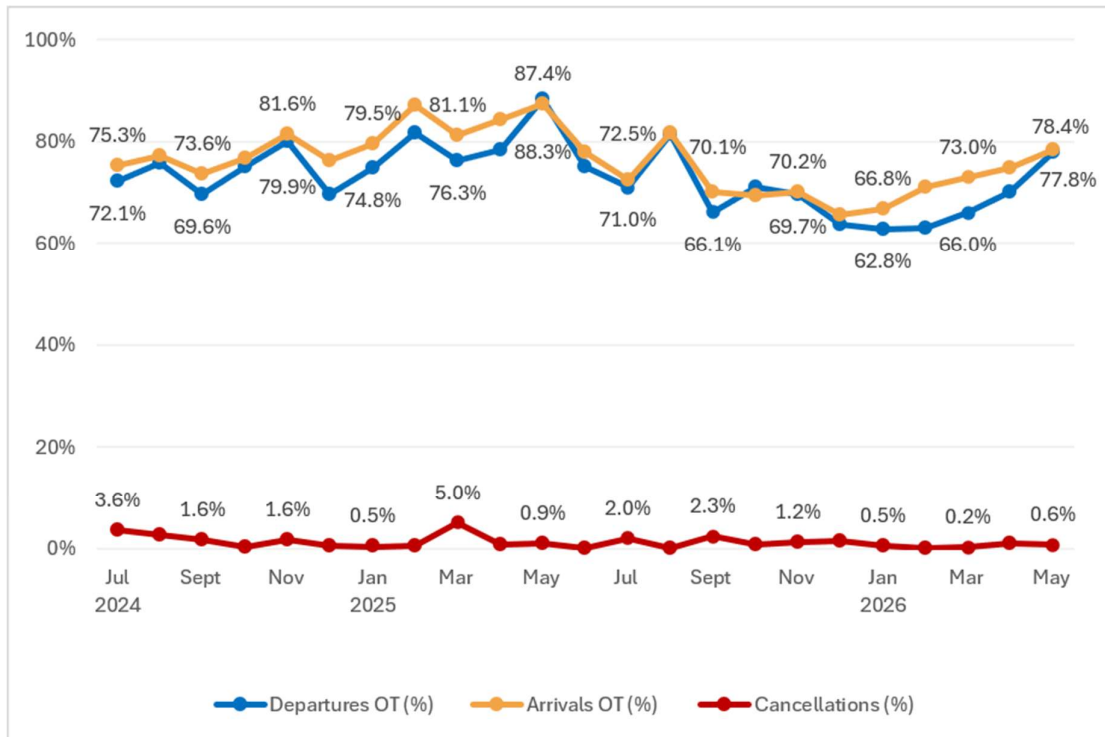
## Emirates

Emirates reported that the departure delay was expected due to airport capacity constraints during the peak morning period, resulting in extended taxi times.



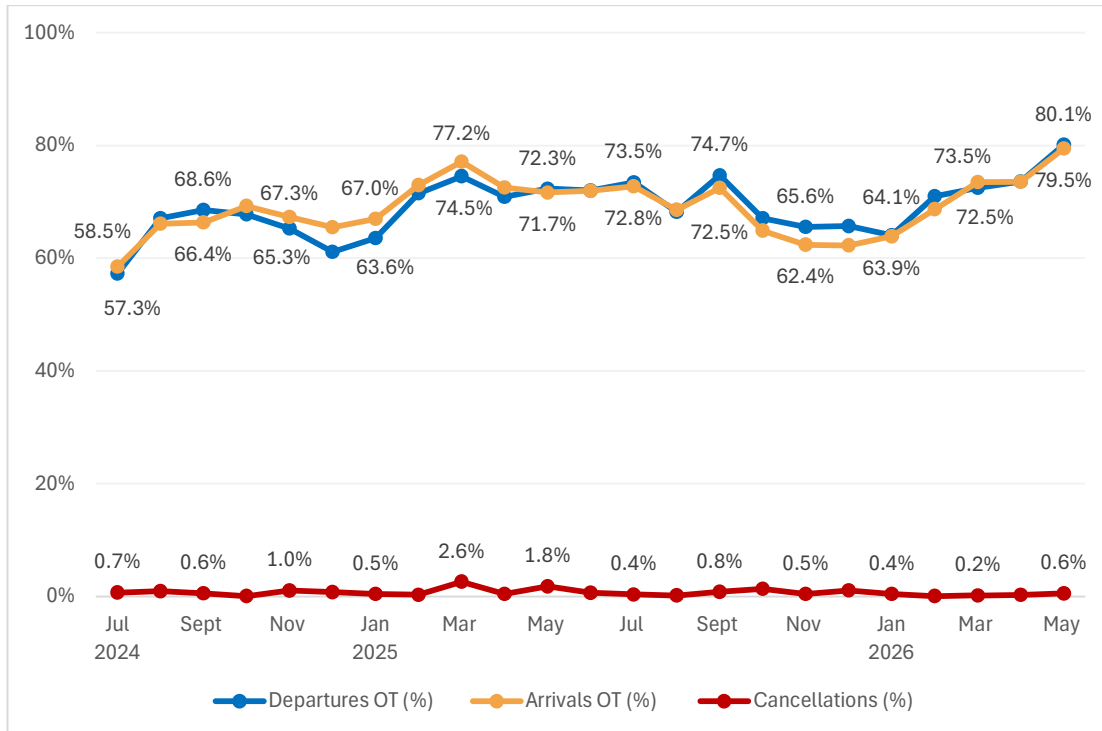
## Jetstar

Jetstar reported that its trans-Tasman OTP was affected by weather, late-arriving aircraft delayed by congestion in Sydney, gate availability constraints in Auckland, and air traffic control ground movement holding at Auckland Airport.



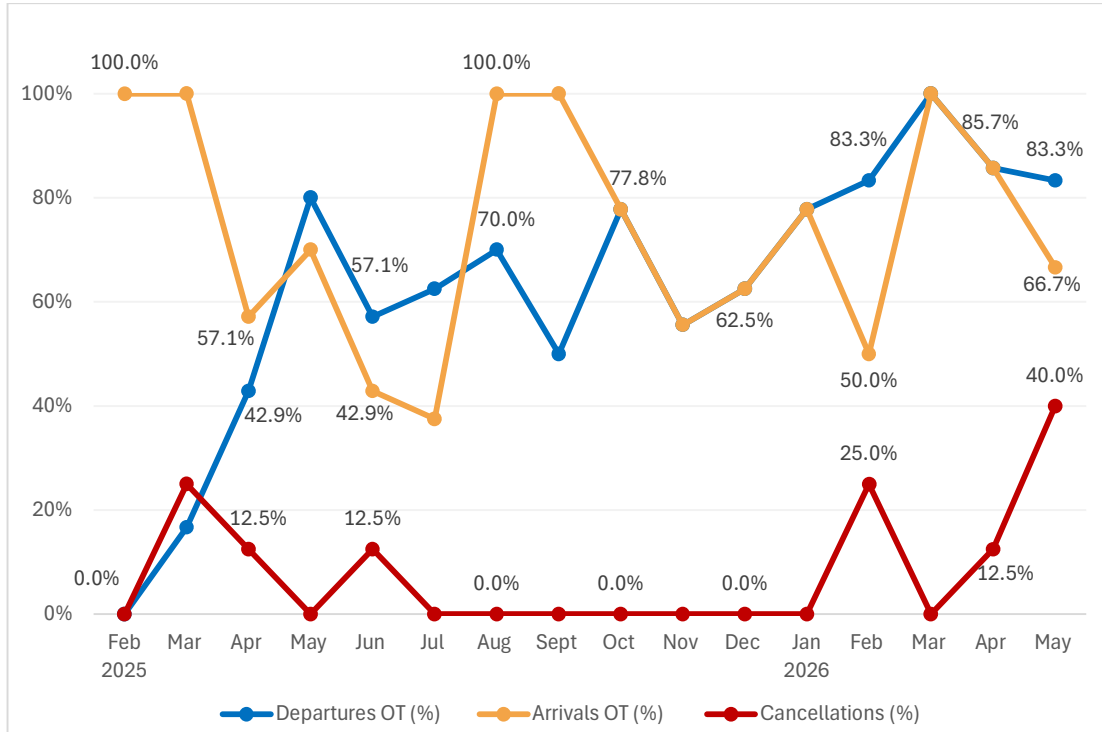
## Qantas

Qantas reported that seasonal weather disruption (fog and crosswinds) contributed to delays during the period. Delays due to industry congestion were exacerbated by weather conditions. Late-arriving inbound aircraft due to weather-related delays led to consequential boarding and ramp delays as services operated off schedule.

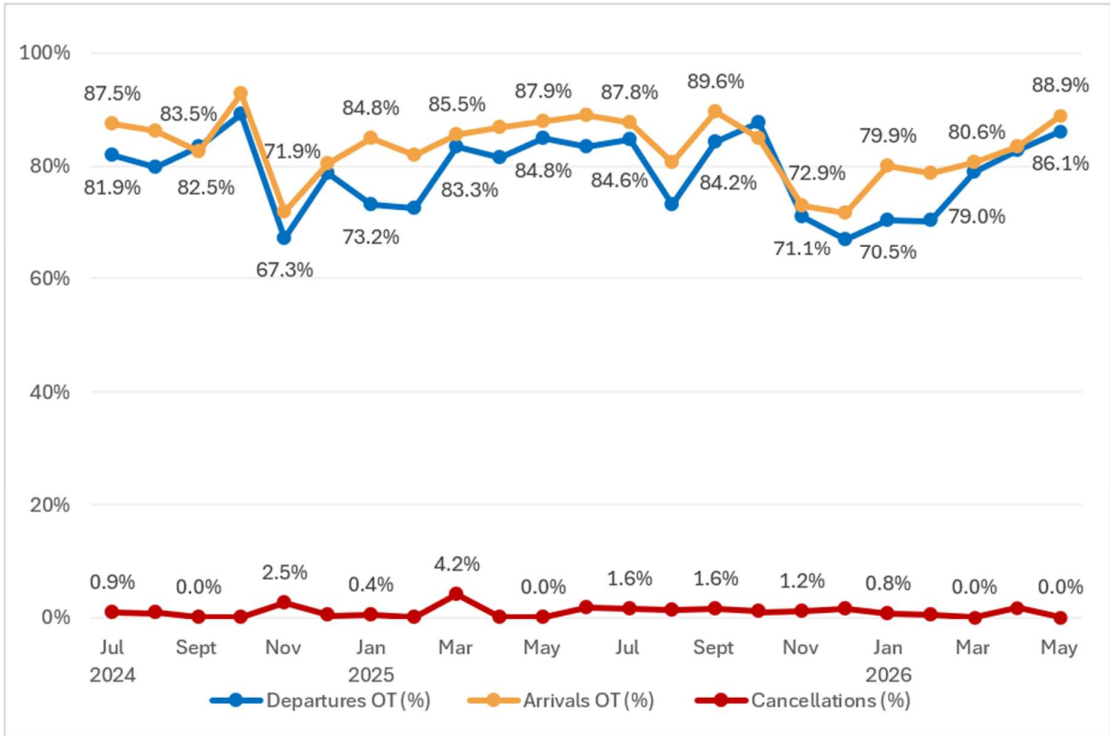


## Solomon Airlines

Solomon Airlines started weekly Brisbane – Auckland and Auckland – Brisbane services in February 2025. Arrival and departure OTP were identical from October 2025 to January 2026, and again in March and April 2026. As a result, the two series overlap on the chart and appear as a single line (yellow).



## Virgin Australia



### 13. Individual domestic regional routes in May 2026

Route Airline	Sectors		On-Time Departures		On-Time Arrivals		Cancellations	
	Scheduled	Flown	No.	%	No.	%	No.	%
<b>Auckland - Blenheim</b>	<b>111</b>	<b>111</b>	<b>101</b>	<b>91.0%</b>	<b>104</b>	<b>93.7%</b>	<b>0</b>	<b>0.0%</b>
Air New Zealand	111	111	101	91.0%	104	93.7%	0	0.0%
<b>Auckland - Gisborne</b>	<b>129</b>	<b>129</b>	<b>116</b>	<b>89.9%</b>	<b>120</b>	<b>93.0%</b>	<b>0</b>	<b>0.0%</b>
Air New Zealand	129	129	116	89.9%	120	93.0%	0	0.0%
<b>Auckland - Hawke's Bay</b>	<b>293</b>	<b>293</b>	<b>268</b>	<b>91.5%</b>	<b>268</b>	<b>91.5%</b>	<b>0</b>	<b>0.0%</b>
Air New Zealand	293	293	268	91.5%	268	91.5%	0	0.0%
<b>Auckland - Invercargill</b>	<b>19</b>	<b>19</b>	<b>18</b>	<b>94.7%</b>	<b>18</b>	<b>94.7%</b>	<b>0</b>	<b>0.0%</b>
Air New Zealand	19	19	18	94.7%	18	94.7%	0	0.0%
<b>Auckland - Kerikeri</b>	<b>108</b>	<b>107</b>	<b>95</b>	<b>88.8%</b>	<b>98</b>	<b>91.6%</b>	<b>1</b>	<b>0.9%</b>
Air New Zealand	108	107	95	88.8%	98	91.6%	1	0.9%
<b>Auckland - Nelson</b>	<b>274</b>	<b>271</b>	<b>245</b>	<b>90.4%</b>	<b>257</b>	<b>94.8%</b>	<b>3</b>	<b>1.1%</b>
Air New Zealand	274	271	245	90.4%	257	94.8%	3	1.1%
<b>Auckland - New Plymouth</b>	<b>179</b>	<b>178</b>	<b>159</b>	<b>89.3%</b>	<b>160</b>	<b>89.9%</b>	<b>1</b>	<b>0.6%</b>
Air New Zealand	179	178	159	89.3%	160	89.9%	1	0.6%
<b>Auckland - Palmerston North</b>	<b>258</b>	<b>254</b>	<b>221</b>	<b>87.0%</b>	<b>225</b>	<b>88.6%</b>	<b>4</b>	<b>1.6%</b>
Air New Zealand	258	254	221	87.0%	225	88.6%	4	1.6%

Route	Sectors		On-Time Departures		On-Time Arrivals		Cancellations	
Route Airline	Scheduled	Flown	No.	%	No.	%	No.	%
<b>Auckland - Rotorua</b>	<b>52</b>	<b>48</b>	<b>41</b>	<b>85.4%</b>	<b>39</b>	<b>81.3%</b>	<b>4</b>	<b>7.7%</b>
Air New Zealand	52	48	41	85.4%	39	81.3%	4	7.7%
<b>Auckland - Taupo</b>	<b>53</b>	<b>50</b>	<b>47</b>	<b>94.0%</b>	<b>46</b>	<b>92.0%</b>	<b>3</b>	<b>5.7%</b>
Air New Zealand	53	50	47	94.0%	46	92.0%	3	5.7%
<b>Auckland - Tauranga</b>	<b>224</b>	<b>223</b>	<b>209</b>	<b>93.7%</b>	<b>209</b>	<b>93.7%</b>	<b>1</b>	<b>0.4%</b>
Air New Zealand	224	223	209	93.7%	209	93.7%	1	0.4%
<b>Auckland - Whangarei</b>	<b>99</b>	<b>98</b>	<b>88</b>	<b>89.8%</b>	<b>89</b>	<b>90.8%</b>	<b>1</b>	<b>1.0%</b>
Air New Zealand	99	98	88	89.8%	89	90.8%	1	1.0%
<b>Blenheim - Auckland</b>	<b>111</b>	<b>110</b>	<b>100</b>	<b>90.9%</b>	<b>103</b>	<b>93.6%</b>	<b>1</b>	<b>0.9%</b>
Air New Zealand	111	110	100	90.9%	103	93.6%	1	0.9%
<b>Blenheim - Wellington</b>	<b>88</b>	<b>87</b>	<b>83</b>	<b>95.4%</b>	<b>83</b>	<b>95.4%</b>	<b>1</b>	<b>1.1%</b>
Air New Zealand	88	87	83	95.4%	83	95.4%	1	1.1%
<b>Christchurch - Dunedin</b>	<b>176</b>	<b>168</b>	<b>146</b>	<b>86.9%</b>	<b>149</b>	<b>88.7%</b>	<b>8</b>	<b>4.5%</b>
Air New Zealand	176	168	146	86.9%	149	88.7%	8	4.5%
<b>Christchurch - Hamilton</b>	<b>69</b>	<b>67</b>	<b>61</b>	<b>91.0%</b>	<b>63</b>	<b>94.0%</b>	<b>2</b>	<b>2.9%</b>
Air New Zealand	69	67	61	91.0%	63	94.0%	2	2.9%
<b>Christchurch - Hawke's Bay</b>	<b>92</b>	<b>91</b>	<b>85</b>	<b>93.4%</b>	<b>84</b>	<b>92.3%</b>	<b>1</b>	<b>1.1%</b>
Air New Zealand	92	91	85	93.4%	84	92.3%	1	1.1%

Route	Sectors		On-Time Departures		On-Time Arrivals		Cancellations	
Route Airline	Scheduled	Flown	No.	%	No.	%	No.	%
<b>Christchurch - Hokitika</b>	<b>52</b>	<b>47</b>	<b>41</b>	<b>87.2%</b>	<b>40</b>	<b>85.1%</b>	<b>5</b>	<b>9.6%</b>
Air New Zealand	52	47	41	87.2%	40	85.1%	5	9.6%
<b>Christchurch - Invercargill</b>	<b>170</b>	<b>167</b>	<b>145</b>	<b>86.8%</b>	<b>147</b>	<b>88.0%</b>	<b>3</b>	<b>1.8%</b>
Air New Zealand	170	167	145	86.8%	147	88.0%	3	1.8%
<b>Christchurch - Nelson</b>	<b>160</b>	<b>159</b>	<b>143</b>	<b>89.9%</b>	<b>147</b>	<b>92.5%</b>	<b>1</b>	<b>0.6%</b>
Air New Zealand	160	159	143	89.9%	147	92.5%	1	0.6%
<b>Christchurch - New Plymouth</b>	<b>57</b>	<b>57</b>	<b>49</b>	<b>86.0%</b>	<b>50</b>	<b>87.7%</b>	<b>0</b>	<b>0.0%</b>
Air New Zealand	57	57	49	86.0%	50	87.7%	0	0.0%
<b>Christchurch - Palmerston North</b>	<b>115</b>	<b>115</b>	<b>105</b>	<b>91.3%</b>	<b>108</b>	<b>93.9%</b>	<b>0</b>	<b>0.0%</b>
Air New Zealand	115	115	105	91.3%	108	93.9%	0	0.0%
<b>Christchurch - Queenstown</b>	<b>108</b>	<b>106</b>	<b>98</b>	<b>92.5%</b>	<b>97</b>	<b>91.5%</b>	<b>2</b>	<b>1.9%</b>
Air New Zealand	108	106	98	92.5%	97	91.5%	2	1.9%
<b>Christchurch - Rotorua</b>	<b>54</b>	<b>54</b>	<b>49</b>	<b>90.7%</b>	<b>49</b>	<b>90.7%</b>	<b>0</b>	<b>0.0%</b>
Air New Zealand	54	54	49	90.7%	49	90.7%	0	0.0%
<b>Christchurch - Tauranga</b>	<b>85</b>	<b>84</b>	<b>77</b>	<b>91.7%</b>	<b>77</b>	<b>91.7%</b>	<b>1</b>	<b>1.2%</b>
Air New Zealand	85	84	77	91.7%	77	91.7%	1	1.2%
<b>Christchurch - Wellington</b>	<b>346</b>	<b>339</b>	<b>314</b>	<b>92.6%</b>	<b>317</b>	<b>93.5%</b>	<b>7</b>	<b>2.0%</b>
Air New Zealand	346	339	314	92.6%	317	93.5%	7	2.0%

Route Airline	Sectors		On-Time Departures		On-Time Arrivals		Cancellations	
	Scheduled	Flown	No.	%	No.	%	No.	%
<b>Dunedin - Christchurch</b>	<b>176</b>	<b>165</b>	<b>145</b>	<b>87.9%</b>	<b>146</b>	<b>88.5%</b>	<b>11</b>	<b>6.2%</b>
Air New Zealand	176	165	145	87.9%	146	88.5%	11	6.2%
<b>Dunedin - Wellington</b>	<b>73</b>	<b>73</b>	<b>60</b>	<b>82.2%</b>	<b>63</b>	<b>86.3%</b>	<b>0</b>	<b>0.0%</b>
Air New Zealand	73	73	60	82.2%	63	86.3%	0	0.0%
<b>Gisborne - Auckland</b>	<b>130</b>	<b>130</b>	<b>120</b>	<b>92.3%</b>	<b>123</b>	<b>94.6%</b>	<b>0</b>	<b>0.0%</b>
Air New Zealand	130	130	120	92.3%	123	94.6%	0	0.0%
<b>Gisborne - Hamilton</b>	<b>1</b>	<b>1</b>	<b>1</b>	<b>100.0%</b>	<b>1</b>	<b>100.0%</b>	<b>0</b>	<b>0.0%</b>
Sunair Aviation	1	1	1	100.0%	1	100.0%	0	0.0%
<b>Gisborne - Hawke's Bay</b>	<b>7</b>	<b>7</b>	<b>7</b>	<b>100.0%</b>	<b>7</b>	<b>100.0%</b>	<b>0</b>	<b>0.0%</b>
Sunair Aviation	7	7	7	100.0%	7	100.0%	0	0.0%
<b>Gisborne - Tauranga</b>	<b>2</b>	<b>2</b>	<b>2</b>	<b>100.0%</b>	<b>2</b>	<b>100.0%</b>	<b>0</b>	<b>0.0%</b>
Sunair Aviation	2	2	2	100.0%	2	100.0%	0	0.0%
<b>Gisborne - Wellington</b>	<b>57</b>	<b>56</b>	<b>51</b>	<b>91.1%</b>	<b>52</b>	<b>92.9%</b>	<b>1</b>	<b>1.8%</b>
Air New Zealand	57	56	51	91.1%	52	92.9%	1	1.8%
<b>Gisborne - Whakatane</b>	<b>1</b>	<b>1</b>	<b>1</b>	<b>100.0%</b>	<b>1</b>	<b>100.0%</b>	<b>0</b>	<b>0.0%</b>
Sunair Aviation	1	1	1	100.0%	1	100.0%	0	0.0%
<b>Great Barrier Island - Tauranga</b>	<b>1</b>	<b>1</b>	<b>0</b>	<b>0.0%</b>	<b>0</b>	<b>0.0%</b>	<b>0</b>	<b>0.0%</b>
Sunair Aviation	1	1	0	0.0%	0	0.0%	0	0.0%

Route		Sectors		On-Time Departures		On-Time Arrivals		Cancellations	
Route	Airline	Scheduled	Flown	No.	%	No.	%	No.	%
<b>Hamilton - Christchurch</b>		<b>70</b>	<b>66</b>	<b>61</b>	<b>92.4%</b>	<b>64</b>	<b>97.0%</b>	<b>4</b>	<b>5.7%</b>
	Air New Zealand	70	66	61	92.4%	64	97.0%	4	5.7%
<b>Hamilton - Gisborne</b>		<b>1</b>	<b>1</b>	<b>1</b>	<b>100.0%</b>	<b>1</b>	<b>100.0%</b>	<b>0</b>	<b>0.0%</b>
	Sunair Aviation	1	1	1	100.0%	1	100.0%	0	0.0%
<b>Hamilton - Wellington</b>		<b>139</b>	<b>135</b>	<b>125</b>	<b>92.6%</b>	<b>125</b>	<b>92.6%</b>	<b>4</b>	<b>2.9%</b>
	Air New Zealand	139	135	125	92.6%	125	92.6%	4	2.9%
<b>Hawke's Bay - Auckland</b>		<b>293</b>	<b>289</b>	<b>270</b>	<b>93.4%</b>	<b>271</b>	<b>93.8%</b>	<b>4</b>	<b>1.4%</b>
	Air New Zealand	293	289	270	93.4%	271	93.8%	4	1.4%
<b>Hawke's Bay - Christchurch</b>		<b>93</b>	<b>93</b>	<b>80</b>	<b>86.0%</b>	<b>84</b>	<b>90.3%</b>	<b>0</b>	<b>0.0%</b>
	Air New Zealand	93	93	80	86.0%	84	90.3%	0	0.0%
<b>Hawke's Bay - Gisborne</b>		<b>7</b>	<b>7</b>	<b>7</b>	<b>100.0%</b>	<b>7</b>	<b>100.0%</b>	<b>0</b>	<b>0.0%</b>
	Sunair Aviation	7	7	7	100.0%	7	100.0%	0	0.0%
<b>Hawke's Bay - Hamilton</b>		<b>1</b>	<b>1</b>	<b>1</b>	<b>100.0%</b>	<b>1</b>	<b>100.0%</b>	<b>0</b>	<b>0.0%</b>
	Sunair Aviation	1	1	1	100.0%	1	100.0%	0	0.0%
<b>Hawke's Bay - Wairoa</b>		<b>3</b>	<b>3</b>	<b>3</b>	<b>100.0%</b>	<b>3</b>	<b>100.0%</b>	<b>0</b>	<b>0.0%</b>
	Sunair Aviation	3	3	3	100.0%	3	100.0%	0	0.0%
<b>Hawke's Bay - Wellington</b>		<b>94</b>	<b>94</b>	<b>84</b>	<b>89.4%</b>	<b>85</b>	<b>90.4%</b>	<b>0</b>	<b>0.0%</b>
	Air New Zealand	94	94	84	89.4%	85	90.4%	0	0.0%

Route Airline	Sectors		On-Time Departures		On-Time Arrivals		Cancellations	
	Scheduled	Flown	No.	%	No.	%	No.	%
<b>Hokitika - Christchurch</b>	<b>52</b>	<b>46</b>	<b>39</b>	<b>84.8%</b>	<b>40</b>	<b>87.0%</b>	<b>6</b>	<b>11.5%</b>
Air New Zealand	52	46	39	84.8%	40	87.0%	6	11.5%
<b>Invercargill - Auckland</b>	<b>19</b>	<b>19</b>	<b>14</b>	<b>73.7%</b>	<b>16</b>	<b>84.2%</b>	<b>0</b>	<b>0.0%</b>
Air New Zealand	19	19	14	73.7%	16	84.2%	0	0.0%
<b>Invercargill - Christchurch</b>	<b>172</b>	<b>167</b>	<b>143</b>	<b>85.6%</b>	<b>148</b>	<b>88.6%</b>	<b>5</b>	<b>2.9%</b>
Air New Zealand	172	167	143	85.6%	148	88.6%	5	2.9%
<b>Kerikeri - Auckland</b>	<b>108</b>	<b>107</b>	<b>98</b>	<b>91.6%</b>	<b>99</b>	<b>92.5%</b>	<b>1</b>	<b>0.9%</b>
Air New Zealand	108	107	98	91.6%	99	92.5%	1	0.9%
<b>Nelson - Auckland</b>	<b>273</b>	<b>273</b>	<b>247</b>	<b>90.5%</b>	<b>248</b>	<b>90.8%</b>	<b>0</b>	<b>0.0%</b>
Air New Zealand	273	273	247	90.5%	248	90.8%	0	0.0%
<b>Nelson - Christchurch</b>	<b>160</b>	<b>157</b>	<b>135</b>	<b>86.0%</b>	<b>134</b>	<b>85.4%</b>	<b>3</b>	<b>1.9%</b>
Air New Zealand	160	157	135	86.0%	134	85.4%	3	1.9%
<b>Nelson - Wellington</b>	<b>207</b>	<b>205</b>	<b>191</b>	<b>93.2%</b>	<b>191</b>	<b>93.2%</b>	<b>2</b>	<b>1.0%</b>
Air New Zealand	207	205	191	93.2%	191	93.2%	2	1.0%
<b>New Plymouth - Auckland</b>	<b>179</b>	<b>177</b>	<b>160</b>	<b>90.4%</b>	<b>162</b>	<b>91.5%</b>	<b>2</b>	<b>1.1%</b>
Air New Zealand	179	177	160	90.4%	162	91.5%	2	1.1%

Route	Sectors		On-Time Departures		On-Time Arrivals		Cancellations	
Route Airline	Scheduled	Flown	No.	%	No.	%	No.	%
<b>New Plymouth - Christchurch</b>	<b>57</b>	<b>57</b>	<b>53</b>	<b>93.0%</b>	<b>53</b>	<b>93.0%</b>	<b>0</b>	<b>0.0%</b>
Air New Zealand	57	57	53	93.0%	53	93.0%	0	0.0%
<b>New Plymouth - Wellington</b>	<b>82</b>	<b>81</b>	<b>79</b>	<b>97.5%</b>	<b>79</b>	<b>97.5%</b>	<b>1</b>	<b>1.2%</b>
Air New Zealand	82	81	79	97.5%	79	97.5%	1	1.2%
<b>Palmerston North - Auckland</b>	<b>258</b>	<b>255</b>	<b>226</b>	<b>88.6%</b>	<b>229</b>	<b>89.8%</b>	<b>3</b>	<b>1.2%</b>
Air New Zealand	258	255	226	88.6%	229	89.8%	3	1.2%
<b>Palmerston North - Christchurch</b>	<b>115</b>	<b>114</b>	<b>103</b>	<b>90.4%</b>	<b>103</b>	<b>90.4%</b>	<b>1</b>	<b>0.9%</b>
Air New Zealand	115	114	103	90.4%	103	90.4%	1	0.9%
<b>Queenstown - Christchurch</b>	<b>108</b>	<b>106</b>	<b>94</b>	<b>88.7%</b>	<b>97</b>	<b>91.5%</b>	<b>2</b>	<b>1.9%</b>
Air New Zealand	108	106	94	88.7%	97	91.5%	2	1.9%
<b>Rotorua - Auckland</b>	<b>52</b>	<b>49</b>	<b>43</b>	<b>87.8%</b>	<b>45</b>	<b>91.8%</b>	<b>3</b>	<b>5.8%</b>
Air New Zealand	52	49	43	87.8%	45	91.8%	3	5.8%
<b>Rotorua - Christchurch</b>	<b>54</b>	<b>51</b>	<b>39</b>	<b>76.5%</b>	<b>42</b>	<b>82.4%</b>	<b>3</b>	<b>5.6%</b>
Air New Zealand	54	51	39	76.5%	42	82.4%	3	5.6%
<b>Rotorua - Wellington</b>	<b>56</b>	<b>53</b>	<b>46</b>	<b>86.8%</b>	<b>47</b>	<b>88.7%</b>	<b>3</b>	<b>5.4%</b>
Air New Zealand	56	53	46	86.8%	47	88.7%	3	5.4%
<b>Takaka - Wellington</b>	<b>22</b>	<b>21</b>	<b>21</b>	<b>100.0%</b>	<b>21</b>	<b>100.0%</b>	<b>1</b>	<b>4.5%</b>
Golden Bay Air	22	21	21	100.0%	21	100.0%	1	4.5%

Route	Sectors		On-Time Departures		On-Time Arrivals		Cancellations	
Route Airline	Scheduled	Flown	No.	%	No.	%	No.	%
<b>Taupo - Auckland</b>	<b>53</b>	<b>49</b>	<b>48</b>	<b>98.0%</b>	<b>48</b>	<b>98.0%</b>	<b>4</b>	<b>7.5%</b>
Air New Zealand	53	49	48	98.0%	48	98.0%	4	7.5%
<b>Tauranga - Auckland</b>	<b>224</b>	<b>222</b>	<b>209</b>	<b>94.1%</b>	<b>209</b>	<b>94.1%</b>	<b>2</b>	<b>0.9%</b>
Air New Zealand	224	222	209	94.1%	209	94.1%	2	0.9%
<b>Tauranga - Christchurch</b>	<b>85</b>	<b>82</b>	<b>76</b>	<b>92.7%</b>	<b>75</b>	<b>91.5%</b>	<b>3</b>	<b>3.5%</b>
Air New Zealand	85	82	76	92.7%	75	91.5%	3	3.5%
<b>Tauranga - Great Barrier Island</b>	<b>3</b>	<b>3</b>	<b>3</b>	<b>100.0%</b>	<b>3</b>	<b>100.0%</b>	<b>0</b>	<b>0.0%</b>
Sunair Aviation	3	3	3	100.0%	3	100.0%	0	0.0%
<b>Tauranga - Wellington</b>	<b>106</b>	<b>104</b>	<b>98</b>	<b>94.2%</b>	<b>101</b>	<b>97.1%</b>	<b>2</b>	<b>1.9%</b>
Air New Zealand	106	104	98	94.2%	101	97.1%	2	1.9%
<b>Tauranga - Whangarei</b>	<b>3</b>	<b>3</b>	<b>2</b>	<b>66.7%</b>	<b>2</b>	<b>66.7%</b>	<b>0</b>	<b>0.0%</b>
Sunair Aviation	3	3	2	66.7%	2	66.7%	0	0.0%
<b>Timaru - Wellington</b>	<b>57</b>	<b>53</b>	<b>48</b>	<b>90.6%</b>	<b>48</b>	<b>90.6%</b>	<b>4</b>	<b>7.0%</b>
Air New Zealand	57	53	48	90.6%	48	90.6%	4	7.0%
<b>Wairoa - Hawke's Bay</b>	<b>3</b>	<b>3</b>	<b>3</b>	<b>100.0%</b>	<b>3</b>	<b>100.0%</b>	<b>0</b>	<b>0.0%</b>
Sunair Aviation	3	3	3	100.0%	3	100.0%	0	0.0%
<b>Wellington - Blenheim</b>	<b>88</b>	<b>88</b>	<b>82</b>	<b>93.2%</b>	<b>82</b>	<b>93.2%</b>	<b>0</b>	<b>0.0%</b>
Air New Zealand	88	88	82	93.2%	82	93.2%	0	0.0%

Route	Sectors		On-Time Departures		On-Time Arrivals		Cancellations	
Route Airline	Scheduled	Flown	No.	%	No.	%	No.	%
<b>Wellington - Christchurch</b>	<b>349</b>	<b>339</b>	<b>306</b>	<b>90.3%</b>	<b>302</b>	<b>89.1%</b>	<b>10</b>	<b>2.9%</b>
Air New Zealand	349	339	306	90.3%	302	89.1%	10	2.9%
<b>Wellington - Dunedin</b>	<b>73</b>	<b>73</b>	<b>69</b>	<b>94.5%</b>	<b>68</b>	<b>93.2%</b>	<b>0</b>	<b>0.0%</b>
Air New Zealand	73	73	69	94.5%	68	93.2%	0	0.0%
<b>Wellington - Gisborne</b>	<b>56</b>	<b>55</b>	<b>50</b>	<b>90.9%</b>	<b>50</b>	<b>90.9%</b>	<b>1</b>	<b>1.8%</b>
Air New Zealand	56	55	50	90.9%	50	90.9%	1	1.8%
<b>Wellington - Hamilton</b>	<b>139</b>	<b>136</b>	<b>124</b>	<b>91.2%</b>	<b>125</b>	<b>91.9%</b>	<b>3</b>	<b>2.2%</b>
Air New Zealand	139	136	124	91.2%	125	91.9%	3	2.2%
<b>Wellington - Hawke's Bay</b>	<b>93</b>	<b>93</b>	<b>88</b>	<b>94.6%</b>	<b>89</b>	<b>95.7%</b>	<b>0</b>	<b>0.0%</b>
Air New Zealand	93	93	88	94.6%	89	95.7%	0	0.0%
<b>Wellington - Nelson</b>	<b>204</b>	<b>204</b>	<b>184</b>	<b>90.2%</b>	<b>186</b>	<b>91.2%</b>	<b>0</b>	<b>0.0%</b>
Air New Zealand	204	204	184	90.2%	186	91.2%	0	0.0%
<b>Wellington - New Plymouth</b>	<b>82</b>	<b>80</b>	<b>76</b>	<b>95.0%</b>	<b>77</b>	<b>96.3%</b>	<b>2</b>	<b>2.4%</b>
Air New Zealand	82	80	76	95.0%	77	96.3%	2	2.4%
<b>Wellington - Rotorua</b>	<b>56</b>	<b>55</b>	<b>49</b>	<b>89.1%</b>	<b>48</b>	<b>87.3%</b>	<b>1</b>	<b>1.8%</b>
Air New Zealand	56	55	49	89.1%	48	87.3%	1	1.8%
<b>Wellington - Takaka</b>	<b>22</b>	<b>21</b>	<b>21</b>	<b>100.0%</b>	<b>20</b>	<b>95.2%</b>	<b>1</b>	<b>4.5%</b>
Golden Bay Air	22	21	21	100.0%	20	95.2%	1	4.5%

Route Airline	Sectors		On-Time Departures		On-Time Arrivals		Cancellations	
	Scheduled	Flown	No.	%	No.	%	No.	%
<b>Wellington - Tauranga</b>	<b>106</b>	<b>105</b>	<b>96</b>	<b>91.4%</b>	<b>99</b>	<b>94.3%</b>	<b>1</b>	<b>0.9%</b>
Air New Zealand	106	105	96	91.4%	99	94.3%	1	0.9%
<b>Wellington - Timaru</b>	<b>56</b>	<b>56</b>	<b>47</b>	<b>83.9%</b>	<b>40</b>	<b>71.4%</b>	<b>0</b>	<b>0.0%</b>
Air New Zealand	56	56	47	83.9%	40	71.4%	0	0.0%
<b>Whakatane - Gisborne</b>	<b>1</b>	<b>0</b>	<b>0</b>	<b>0.0%</b>	<b>0</b>	<b>0.0%</b>	<b>1</b>	<b>100.0%</b>
Sunair Aviation	1	0	0	0.0%	0	0.0%	1	100.0%
<b>Whangarei - Auckland</b>	<b>99</b>	<b>97</b>	<b>93</b>	<b>95.9%</b>	<b>93</b>	<b>95.9%</b>	<b>2</b>	<b>2.0%</b>
Air New Zealand	99	97	93	95.9%	93	95.9%	2	2.0%
<b>Whangarei - Great Barrier Island</b>	<b>1</b>	<b>1</b>	<b>1</b>	<b>100.0%</b>	<b>1</b>	<b>100.0%</b>	<b>0</b>	<b>0.0%</b>
Sunair Aviation	1	1	1	100.0%	1	100.0%	0	0.0%
<b>Total / Weighted Percentage</b>	<b>8,564</b>	<b>8,417</b>	<b>7,627</b>	<b>90.6%</b>	<b>7,706</b>	<b>91.6%</b>	<b>147</b>	<b>1.7%</b>

## 14. Domestic OTP by region in May 2026

The following table only includes data from Air New Zealand, Jetstar, Golden Bay Air and Sunair Aviation, as no other data was available.

Region	On-Time Departures from Region		On-Time Arrivals to Region		Cancellations to and from Region	
Auckland	3,044	89.7%	3,062	90.5%	61	0.9%
Blenheim	183	92.9%	186	93.5%	2	0.5%
Christchurch	2,005	87.9%	2,000	88.0%	101	2.2%
Dunedin	311	85.4%	327	88.6%	21	2.8%
Gisborne	182	92.4%	178	92.7%	3	0.8%
Great Barrier Island	0	0.0%	4	100.0%	0	0.0%
Hamilton	232	88.5%	237	89.4%	17	3.1%
Hawke's Bay	445	91.4%	451	92.6%	5	0.5%
Hokitika	39	84.8%	40	85.1%	11	10.6%
Invercargill	157	84.4%	165	88.7%	8	2.1%
Kerikeri	98	91.6%	98	91.6%	2	0.9%
Nelson	573	90.2%	590	93.1%	9	0.7%
New Plymouth	292	92.7%	287	91.1%	6	0.9%
Palmerston North	329	89.2%	333	90.2%	8	1.1%
Queenstown	432	88.9%	442	90.8%	7	0.7%
Rotorua	128	83.7%	136	86.6%	14	4.3%
Takaka	21	100.0%	20	95.2%	2	4.5%
Taupo	48	98.0%	46	92.0%	7	6.6%
Tauranga	388	93.7%	387	93.3%	10	1.2%
Timaru	48	90.6%	40	71.4%	4	3.5%
Wairoa	3	100.0%	3	100.0%	0	0.0%
Wellington	1,788	89.9%	1,830	92.1%	50	1.2%
Whangarei	94	95.9%	91	90.1%	3	1.5%
<b>Total / Weighted Percentage</b>	<b>10,840</b>	<b>89.5%</b>	<b>10,954</b>	<b>90.5%</b>	<b>352</b>	<b>1.4%</b>

## 15. Individual domestic jet routes in May 2026

Route Airline	Sectors		On-Time Departures		On-Time Arrivals		Cancellations	
	Scheduled	Flown	No.	%	No.	%	No.	%
<b>Auckland - Christchurch</b>	<b>663</b>	<b>656</b>	<b>576</b>	<b>87.8%</b>	<b>569</b>	<b>86.7%</b>	<b>7</b>	<b>1.1%</b>
Air New Zealand	439	436	394	90.4%	388	89.0%	3	0.7%
Jetstar	224	220	182	82.7%	181	82.3%	4	1.8%
<b>Auckland - Dunedin</b>	<b>128</b>	<b>128</b>	<b>111</b>	<b>86.7%</b>	<b>110</b>	<b>85.9%</b>	<b>0</b>	<b>0.0%</b>
Air New Zealand	89	89	79	88.8%	79	88.8%	0	0.0%
Jetstar	39	39	32	82.1%	31	79.5%	0	0.0%
<b>Auckland - Queenstown</b>	<b>319</b>	<b>318</b>	<b>294</b>	<b>92.5%</b>	<b>290</b>	<b>91.2%</b>	<b>1</b>	<b>0.3%</b>
Air New Zealand	219	218	200	91.7%	197	90.4%	1	0.5%
Jetstar	100	100	94	94.0%	93	93.0%	0	0.0%
<b>Auckland - Wellington</b>	<b>511</b>	<b>511</b>	<b>455</b>	<b>89.0%</b>	<b>464</b>	<b>90.8%</b>	<b>0</b>	<b>0.0%</b>
Air New Zealand	402	402	362	90.0%	373	92.8%	0	0.0%
Jetstar	109	109	93	85.3%	91	83.5%	0	0.0%
<b>Christchurch - Auckland</b>	<b>663</b>	<b>655</b>	<b>547</b>	<b>83.5%</b>	<b>571</b>	<b>87.2%</b>	<b>8</b>	<b>1.2%</b>
Air New Zealand	439	435	373	85.7%	394	90.6%	4	0.9%
Jetstar	224	220	174	79.1%	177	80.5%	4	1.8%

Route Airline	Sectors		On-Time Departures		On-Time Arrivals		Cancellations	
	Scheduled	Flown	No.	%	No.	%	No.	%
<b>Christchurch - Hamilton</b>	<b>62</b>	<b>60</b>	<b>46</b>	<b>76.7%</b>	<b>47</b>	<b>78.3%</b>	<b>2</b>	<b>3.2%</b>
Air New Zealand	31	31	25	80.6%	26	83.9%	0	0.0%
Jetstar	31	29	21	72.4%	21	72.4%	2	6.5%
<b>Christchurch - Wellington</b>	<b>114</b>	<b>112</b>	<b>99</b>	<b>88.4%</b>	<b>100</b>	<b>89.3%</b>	<b>2</b>	<b>1.8%</b>
Air New Zealand	52	52	47	90.4%	47	90.4%	0	0.0%
Jetstar	62	60	52	86.7%	53	88.3%	2	3.2%
<b>Dunedin - Auckland</b>	<b>128</b>	<b>126</b>	<b>106</b>	<b>84.1%</b>	<b>108</b>	<b>85.7%</b>	<b>2</b>	<b>1.6%</b>
Air New Zealand	89	89	77	86.5%	78	87.6%	0	0.0%
Jetstar	39	37	29	78.4%	30	81.1%	2	5.1%
<b>Hamilton - Christchurch</b>	<b>62</b>	<b>60</b>	<b>45</b>	<b>75.0%</b>	<b>46</b>	<b>76.7%</b>	<b>2</b>	<b>3.2%</b>
Air New Zealand	31	31	27	87.1%	28	90.3%	0	0.0%
Jetstar	31	29	18	62.1%	18	62.1%	2	6.5%
<b>Queenstown - Auckland</b>	<b>319</b>	<b>317</b>	<b>284</b>	<b>89.6%</b>	<b>291</b>	<b>91.8%</b>	<b>2</b>	<b>0.6%</b>
Air New Zealand	219	217	193	88.9%	197	90.8%	2	0.9%
Jetstar	100	100	91	91.0%	94	94.0%	0	0.0%
<b>Queenstown - Wellington</b>	<b>63</b>	<b>63</b>	<b>54</b>	<b>85.7%</b>	<b>54</b>	<b>85.7%</b>	<b>0</b>	<b>0.0%</b>
Air New Zealand	49	49	42	85.7%	42	85.7%	0	0.0%

Route Airline	Sectors		On-Time Departures		On-Time Arrivals		Cancellations	
	Scheduled	Flown	No.	%	No.	%	No.	%
Jetstar	14	14	12	85.7%	12	85.7%	0	0.0%
<b>Wellington - Auckland</b>	<b>509</b>	<b>508</b>	<b>444</b>	<b>87.4%</b>	<b>446</b>	<b>87.8%</b>	<b>1</b>	<b>0.2%</b>
Air New Zealand	400	399	356	89.2%	353	88.5%	1	0.3%
Jetstar	109	109	88	80.7%	93	85.3%	0	0.0%
<b>Wellington - Christchurch</b>	<b>115</b>	<b>113</b>	<b>97</b>	<b>85.8%</b>	<b>97</b>	<b>85.8%</b>	<b>2</b>	<b>1.7%</b>
Air New Zealand	53	53	47	88.7%	48	90.6%	0	0.0%
Jetstar	62	60	50	83.3%	49	81.7%	2	3.2%
<b>Wellington - Queenstown</b>	<b>63</b>	<b>63</b>	<b>55</b>	<b>87.3%</b>	<b>55</b>	<b>87.3%</b>	<b>0</b>	<b>0.0%</b>
Air New Zealand	49	49	43	87.8%	44	89.8%	0	0.0%
Jetstar	14	14	12	85.7%	11	78.6%	0	0.0%
<b>Total / Weighted Percentage</b>	<b>3,719</b>	<b>3,690</b>	<b>3,213</b>	<b>87.1%</b>	<b>3,248</b>	<b>88.0%</b>	<b>29</b>	<b>0.8%</b>

## 16. Individual trans-Tasman routes in May 2026

Route Airline	Sectors		On-Time Departures		On-Time Arrivals		Cancellations	
	Scheduled	Flown	No.	%	No.	%	No.	%
<b>Adelaide - Auckland</b>	<b>21</b>	<b>21</b>	<b>18</b>	<b>85.7%</b>	<b>17</b>	<b>81.0%</b>	<b>0</b>	<b>0.0%</b>
Air New Zealand	18	18	15	83.3%	14	77.8%	0	0.0%
Qantas	3	3	3	100.0%	3	100.0%	0	0.0%
<b>Auckland - Adelaide</b>	<b>21</b>	<b>21</b>	<b>17</b>	<b>81.0%</b>	<b>19</b>	<b>90.5%</b>	<b>0</b>	<b>0.0%</b>
Air New Zealand	18	18	14	77.8%	16	88.9%	0	0.0%
Qantas	3	3	3	100.0%	3	100.0%	0	0.0%
<b>Auckland - Brisbane</b>	<b>228</b>	<b>226</b>	<b>175</b>	<b>77.4%</b>	<b>205</b>	<b>90.7%</b>	<b>2</b>	<b>0.9%</b>
Air New Zealand	83	83	56	67.5%	76	91.6%	0	0.0%
China Airlines	19	19	19	100.0%	18	94.7%	0	0.0%
Jetstar	60	60	45	75.0%	52	86.7%	0	0.0%
Qantas	61	61	53	86.9%	58	95.1%	0	0.0%
Solomon Airlines	5	3	2	66.7%	1	33.3%	2	40.0%
<b>Auckland - Gold Coast</b>	<b>69</b>	<b>69</b>	<b>62</b>	<b>89.9%</b>	<b>62</b>	<b>89.9%</b>	<b>0</b>	<b>0.0%</b>
Air New Zealand	37	37	35	94.6%	35	94.6%	0	0.0%
Jetstar	32	32	27	84.4%	27	84.4%	0	0.0%
<b>Auckland - Melbourne</b>	<b>243</b>	<b>240</b>	<b>200</b>	<b>83.3%</b>	<b>216</b>	<b>90.0%</b>	<b>3</b>	<b>1.2%</b>
Air New Zealand	93	92	75	81.5%	85	92.4%	1	1.1%
Jetstar	34	34	21	61.8%	24	70.6%	0	0.0%
Qantas	116	114	104	91.2%	107	93.9%	2	1.7%
<b>Auckland - Perth</b>	<b>51</b>	<b>50</b>	<b>39</b>	<b>78.0%</b>	<b>44</b>	<b>88.0%</b>	<b>1</b>	<b>2.0%</b>
Air New Zealand	37	36	27	75.0%	32	88.9%	1	2.7%
Qantas	14	14	12	85.7%	12	85.7%	0	0.0%

Route	Sectors		On-Time Departures		On-Time Arrivals		Cancellations	
	Scheduled	Flown	No.	%	No.	%	No.	%
<b>Auckland - Sydney</b>	<b>318</b>	<b>318</b>	<b>237</b>	<b>74.5%</b>	<b>272</b>	<b>85.5%</b>	<b>0</b>	<b>0.0%</b>
Air New Zealand	111	111	72	64.9%	97	87.4%	0	0.0%
China Eastern Airlines	3	3	3	100.0%	3	100.0%	0	0.0%
Jetstar	35	35	28	80.0%	32	91.4%	0	0.0%
Qantas	169	169	134	79.3%	140	82.8%	0	0.0%
<b>Brisbane - Auckland</b>	<b>228</b>	<b>225</b>	<b>179</b>	<b>79.6%</b>	<b>171</b>	<b>76.0%</b>	<b>3</b>	<b>1.3%</b>
Air New Zealand	83	83	60	72.3%	57	68.7%	0	0.0%
China Airlines	19	19	19	100.0%	19	100.0%	0	0.0%
Jetstar	60	59	52	88.1%	52	88.1%	1	1.7%
Qantas	61	61	45	73.8%	40	65.6%	0	0.0%
Solomon Airlines	5	3	3	100.0%	3	100.0%	2	40.0%
<b>Brisbane - Christchurch</b>	<b>62</b>	<b>61</b>	<b>37</b>	<b>60.7%</b>	<b>34</b>	<b>55.7%</b>	<b>1</b>	<b>1.6%</b>
Air New Zealand	31	30	17	56.7%	17	56.7%	1	3.2%
Qantas	31	31	20	64.5%	17	54.8%	0	0.0%
<b>Brisbane - Queenstown</b>	<b>31</b>	<b>31</b>	<b>29</b>	<b>93.5%</b>	<b>27</b>	<b>87.1%</b>	<b>0</b>	<b>0.0%</b>
Qantas	14	14	12	85.7%	12	85.7%	0	0.0%
Virgin Australia	17	17	17	100.0%	15	88.2%	0	0.0%
<b>Brisbane - Wellington</b>	<b>52</b>	<b>52</b>	<b>32</b>	<b>61.5%</b>	<b>26</b>	<b>50.0%</b>	<b>0</b>	<b>0.0%</b>
Air New Zealand	31	31	15	48.4%	9	29.0%	0	0.0%
Qantas	21	21	17	81.0%	17	81.0%	0	0.0%
<b>Christchurch - Brisbane</b>	<b>63</b>	<b>62</b>	<b>48</b>	<b>77.4%</b>	<b>57</b>	<b>91.9%</b>	<b>1</b>	<b>1.6%</b>
Air New Zealand	31	30	21	70.0%	28	93.3%	1	3.2%
Qantas	32	32	27	84.4%	29	90.6%	0	0.0%

Route	Sectors		On-Time Departures		On-Time Arrivals		Cancellations	
	Scheduled	Flown	No.	%	No.	%	No.	%
<b>Christchurch - Gold Coast</b>	<b>18</b>	<b>18</b>	<b>13</b>	<b>72.2%</b>	<b>14</b>	<b>77.8%</b>	<b>0</b>	<b>0.0%</b>
Air New Zealand	9	9	6	66.7%	7	77.8%	0	0.0%
Jetstar	9	9	7	77.8%	7	77.8%	0	0.0%
<b>Christchurch - Melbourne</b>	<b>102</b>	<b>101</b>	<b>83</b>	<b>82.2%</b>	<b>83</b>	<b>82.2%</b>	<b>1</b>	<b>1.0%</b>
Air New Zealand	30	30	21	70.0%	23	76.7%	0	0.0%
Jetstar	31	31	28	90.3%	26	83.9%	0	0.0%
Qantas	41	40	34	85.0%	34	85.0%	1	2.4%
<b>Christchurch - Sydney</b>	<b>126</b>	<b>124</b>	<b>104</b>	<b>83.9%</b>	<b>101</b>	<b>81.5%</b>	<b>2</b>	<b>1.6%</b>
Air New Zealand	34	34	27	79.4%	26	76.5%	0	0.0%
Emirates	31	31	31	100.0%	30	96.8%	0	0.0%
Qantas	61	59	46	78.0%	45	76.3%	2	3.3%
<b>Gold Coast - Auckland</b>	<b>69</b>	<b>69</b>	<b>62</b>	<b>89.9%</b>	<b>63</b>	<b>91.3%</b>	<b>0</b>	<b>0.0%</b>
Air New Zealand	37	37	35	94.6%	35	94.6%	0	0.0%
Jetstar	32	32	27	84.4%	28	87.5%	0	0.0%
<b>Gold Coast - Christchurch</b>	<b>18</b>	<b>18</b>	<b>14</b>	<b>77.8%</b>	<b>14</b>	<b>77.8%</b>	<b>0</b>	<b>0.0%</b>
Air New Zealand	9	9	7	77.8%	7	77.8%	0	0.0%
Jetstar	9	9	7	77.8%	7	77.8%	0	0.0%
<b>Melbourne - Auckland</b>	<b>243</b>	<b>240</b>	<b>201</b>	<b>83.8%</b>	<b>192</b>	<b>80.0%</b>	<b>3</b>	<b>1.2%</b>
Air New Zealand	93	92	78	84.8%	76	82.6%	1	1.1%
Jetstar	34	33	21	63.6%	19	57.6%	1	2.9%
Qantas	116	115	102	88.7%	97	84.3%	1	0.9%

Route	Sectors		On-Time Departures		On-Time Arrivals		Cancellations	
	Scheduled	Flown	No.	%	No.	%	No.	%
<b>Melbourne - Christchurch</b>	<b>101</b>	<b>101</b>	<b>72</b>	<b>71.3%</b>	<b>77</b>	<b>76.2%</b>	<b>0</b>	<b>0.0%</b>
Air New Zealand	30	30	21	70.0%	23	76.7%	0	0.0%
Jetstar	31	31	23	74.2%	23	74.2%	0	0.0%
Qantas	40	40	28	70.0%	31	77.5%	0	0.0%
<b>Melbourne - Queenstown</b>	<b>50</b>	<b>50</b>	<b>36</b>	<b>72.0%</b>	<b>31</b>	<b>62.0%</b>	<b>0</b>	<b>0.0%</b>
Air New Zealand	14	14	12	85.7%	12	85.7%	0	0.0%
Jetstar	13	13	7	53.8%	5	38.5%	0	0.0%
Qantas	21	21	15	71.4%	12	57.1%	0	0.0%
Virgin Australia	2	2	2	100.0%	2	100.0%	0	0.0%
<b>Melbourne - Wellington</b>	<b>58</b>	<b>57</b>	<b>48</b>	<b>84.2%</b>	<b>47</b>	<b>82.5%</b>	<b>1</b>	<b>1.7%</b>
Air New Zealand	27	26	20	76.9%	19	73.1%	1	3.7%
Qantas	31	31	28	90.3%	28	90.3%	0	0.0%
<b>Perth - Auckland</b>	<b>50</b>	<b>49</b>	<b>47</b>	<b>95.9%</b>	<b>44</b>	<b>89.8%</b>	<b>1</b>	<b>2.0%</b>
Air New Zealand	37	36	35	97.2%	32	88.9%	1	2.7%
Qantas	13	13	12	92.3%	12	92.3%	0	0.0%
<b>Queenstown - Brisbane</b>	<b>31</b>	<b>31</b>	<b>27</b>	<b>87.1%</b>	<b>28</b>	<b>90.3%</b>	<b>0</b>	<b>0.0%</b>
Qantas	14	14	12	85.7%	12	85.7%	0	0.0%
Virgin Australia	17	17	15	88.2%	16	94.1%	0	0.0%
<b>Queenstown - Melbourne</b>	<b>50</b>	<b>50</b>	<b>36</b>	<b>72.0%</b>	<b>44</b>	<b>88.0%</b>	<b>0</b>	<b>0.0%</b>
Air New Zealand	14	14	11	78.6%	12	85.7%	0	0.0%
Jetstar	13	13	12	92.3%	12	92.3%	0	0.0%
Qantas	21	21	11	52.4%	18	85.7%	0	0.0%
Virgin Australia	2	2	2	100.0%	2	100.0%	0	0.0%

Route Airline	Sectors		On-Time Departures		On-Time Arrivals		Cancellations	
	Scheduled	Flown	No.	%	No.	%	No.	%
<b>Queenstown - Sydney</b>	<b>110</b>	<b>108</b>	<b>71</b>	<b>65.7%</b>	<b>86</b>	<b>79.6%</b>	<b>2</b>	<b>1.8%</b>
Air New Zealand	19	18	13	72.2%	13	72.2%	1	5.3%
Jetstar	24	23	13	56.5%	17	73.9%	1	4.2%
Qantas	50	50	32	64.0%	41	82.0%	0	0.0%
Virgin Australia	17	17	13	76.5%	15	88.2%	0	0.0%
<b>Sydney - Auckland</b>	<b>317</b>	<b>317</b>	<b>233</b>	<b>73.5%</b>	<b>211</b>	<b>66.6%</b>	<b>0</b>	<b>0.0%</b>
Air New Zealand	111	111	73	65.8%	73	65.8%	0	0.0%
China Eastern Airlines	2	2	2	100.0%	2	100.0%	0	0.0%
Jetstar	35	35	29	82.9%	22	62.9%	0	0.0%
Qantas	169	169	129	76.3%	114	67.5%	0	0.0%
<b>Sydney - Christchurch</b>	<b>125</b>	<b>122</b>	<b>77</b>	<b>63.1%</b>	<b>80</b>	<b>65.6%</b>	<b>3</b>	<b>2.4%</b>
Air New Zealand	33	32	21	65.6%	22	68.8%	1	3.0%
Emirates	31	31	22	71.0%	25	80.6%	0	0.0%
Qantas	61	59	34	57.6%	33	55.9%	2	3.3%
<b>Sydney - Queenstown</b>	<b>110</b>	<b>110</b>	<b>92</b>	<b>83.6%</b>	<b>87</b>	<b>79.1%</b>	<b>0</b>	<b>0.0%</b>
Air New Zealand	19	19	15	78.9%	16	84.2%	0	0.0%
Jetstar	24	24	21	87.5%	18	75.0%	0	0.0%
Qantas	50	50	43	86.0%	39	78.0%	0	0.0%
Virgin Australia	17	17	13	76.5%	14	82.4%	0	0.0%
<b>Sydney - Wellington</b>	<b>88</b>	<b>88</b>	<b>74</b>	<b>84.1%</b>	<b>67</b>	<b>76.1%</b>	<b>0</b>	<b>0.0%</b>
Air New Zealand	27	27	25	92.6%	24	88.9%	0	0.0%
Qantas	61	61	49	80.3%	43	70.5%	0	0.0%

Route Airline	Sectors		On-Time Departures		On-Time Arrivals		Cancellations	
	Scheduled	Flown	No.	%	No.	%	No.	%
<b>Wellington - Brisbane</b>	<b>52</b>	<b>52</b>	<b>27</b>	<b>51.9%</b>	<b>36</b>	<b>69.2%</b>	<b>0</b>	<b>0.0%</b>
Air New Zealand	31	31	8	25.8%	17	54.8%	0	0.0%
Qantas	21	21	19	90.5%	19	90.5%	0	0.0%
<b>Wellington - Melbourne</b>	<b>58</b>	<b>57</b>	<b>50</b>	<b>87.7%</b>	<b>52</b>	<b>91.2%</b>	<b>1</b>	<b>1.7%</b>
Air New Zealand	27	26	24	92.3%	25	96.2%	1	3.7%
Qantas	31	31	26	83.9%	27	87.1%	0	0.0%
<b>Wellington - Sydney</b>	<b>88</b>	<b>88</b>	<b>74</b>	<b>84.1%</b>	<b>78</b>	<b>88.6%</b>	<b>0</b>	<b>0.0%</b>
Air New Zealand	27	27	19	70.4%	25	92.6%	0	0.0%
Qantas	61	61	55	90.2%	53	86.9%	0	0.0%
<b>Total / Weighted Percentage</b>	<b>3,251</b>	<b>3,226</b>	<b>2,514</b>	<b>77.9%</b>	<b>2,585</b>	<b>80.1%</b>	<b>25</b>	<b>0.8%</b>

[transport.govt.nz](https://transport.govt.nz)



**Te Kāwanatanga o Aotearoa**  
New Zealand Government