



Ensuring our  
transport system helps  
New Zealand thrive

 Ministry of Transport  
TE MANATU WAKA

# Freight Information Gathering System (FIGS)

# How did FIGS come about?



## More accurate containerised import/export data

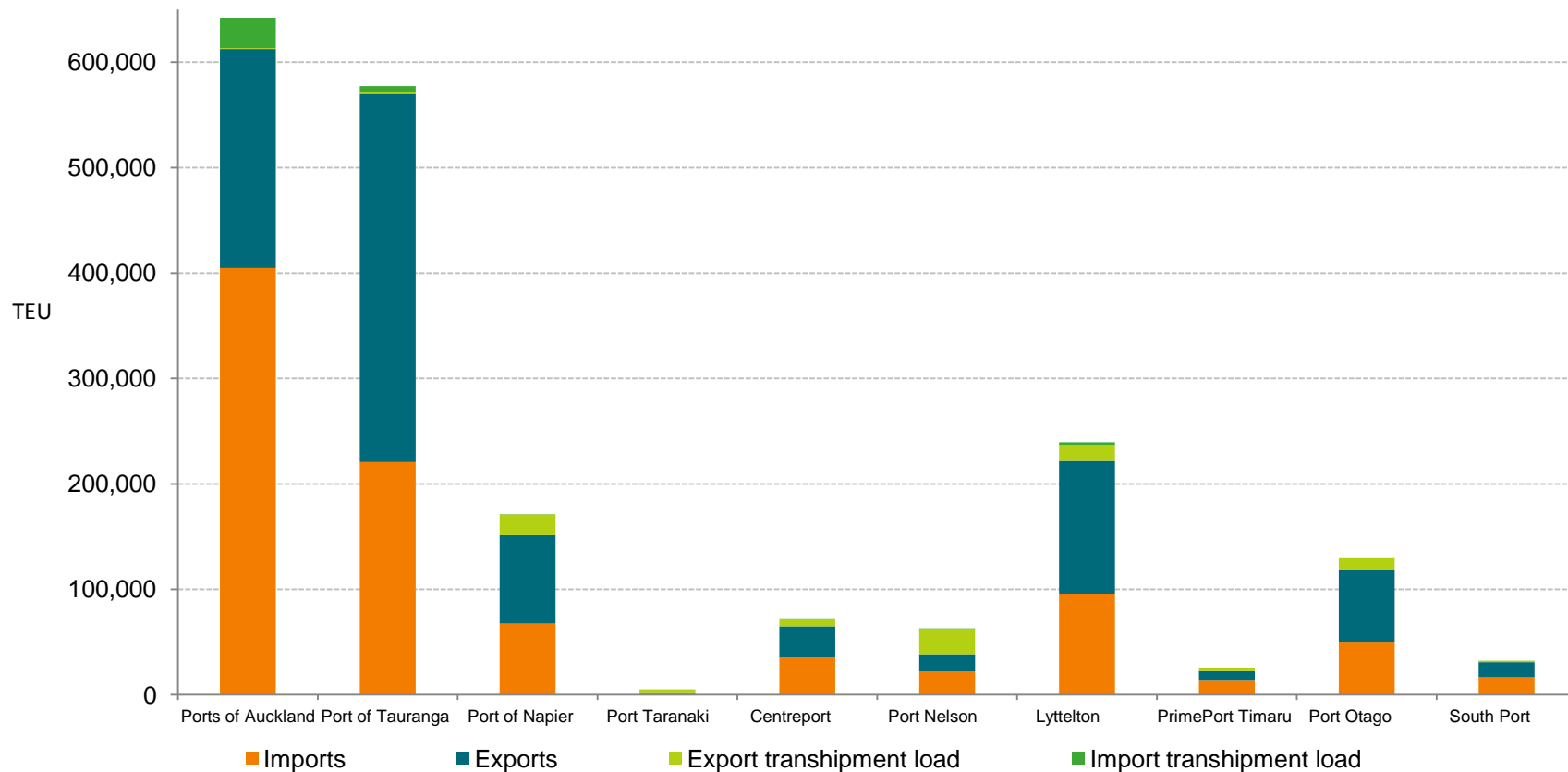
- ▶ Napier and Minister Joyce
- ▶ But from where?
  - ▶ *Custom container import/export data?*
  - ▶ *Port data?*
- ▶ Other FIGS sources
  - ▶ *Rail freight*
  - ▶ *Coastal oil*
  - ▶ *Statistic NZ bulk and containerised sea freight*
  - ▶ *Maritime NZ ship visit data*
  - ▶ *Overall road freight estimates*

# What haven't we got on a voluntary basis?

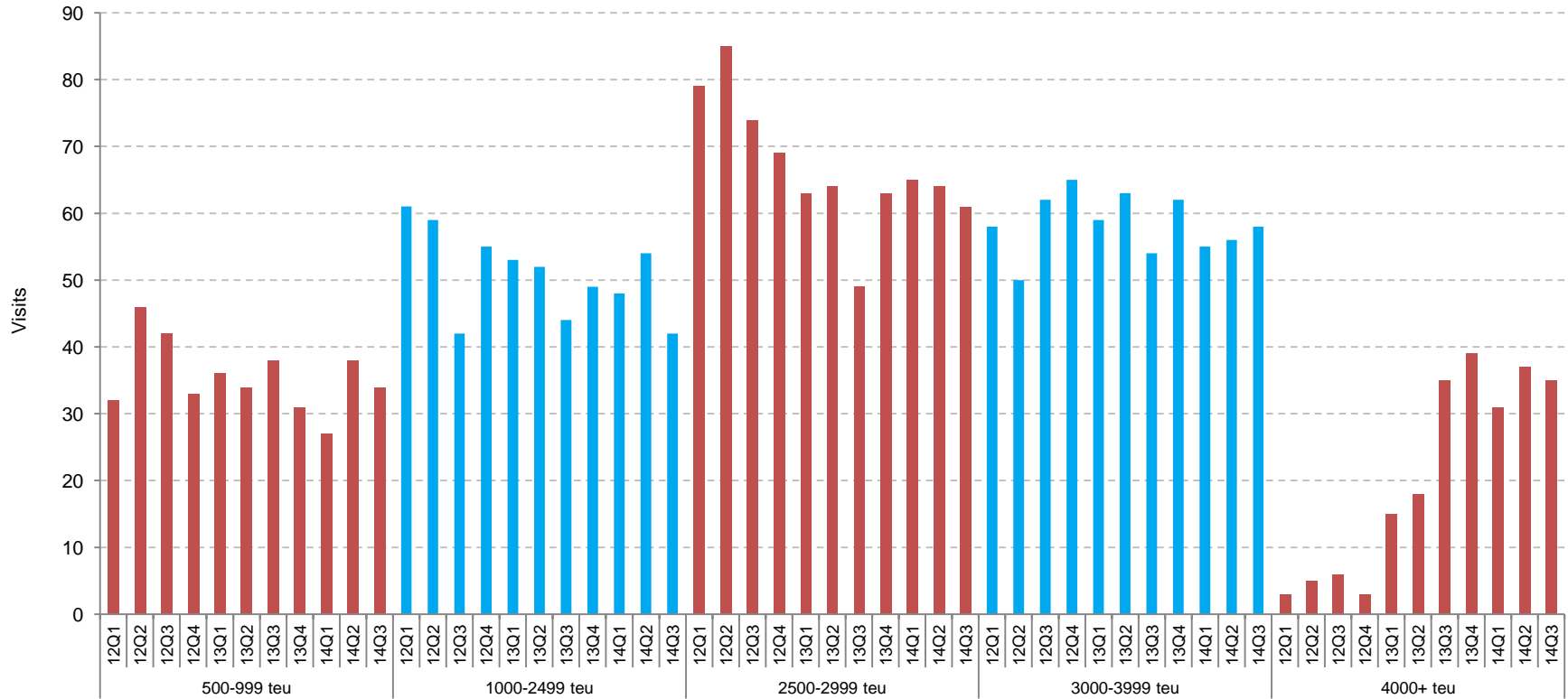


- ▶ Domestic air freight
- ▶ Cook Strait road traffic
- ▶ Coastal cement
- ▶ Detailed road freight information

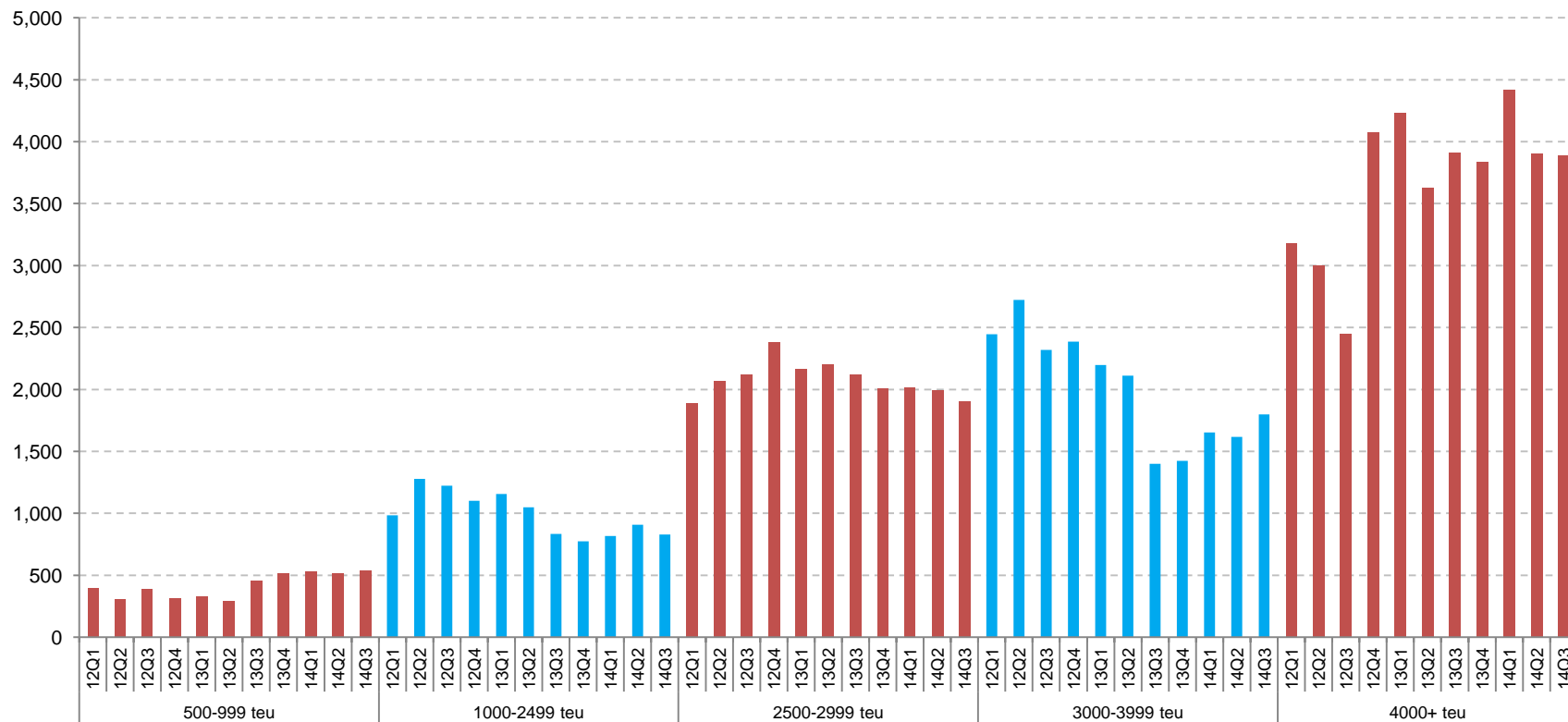
# Container imports, exports and tranships



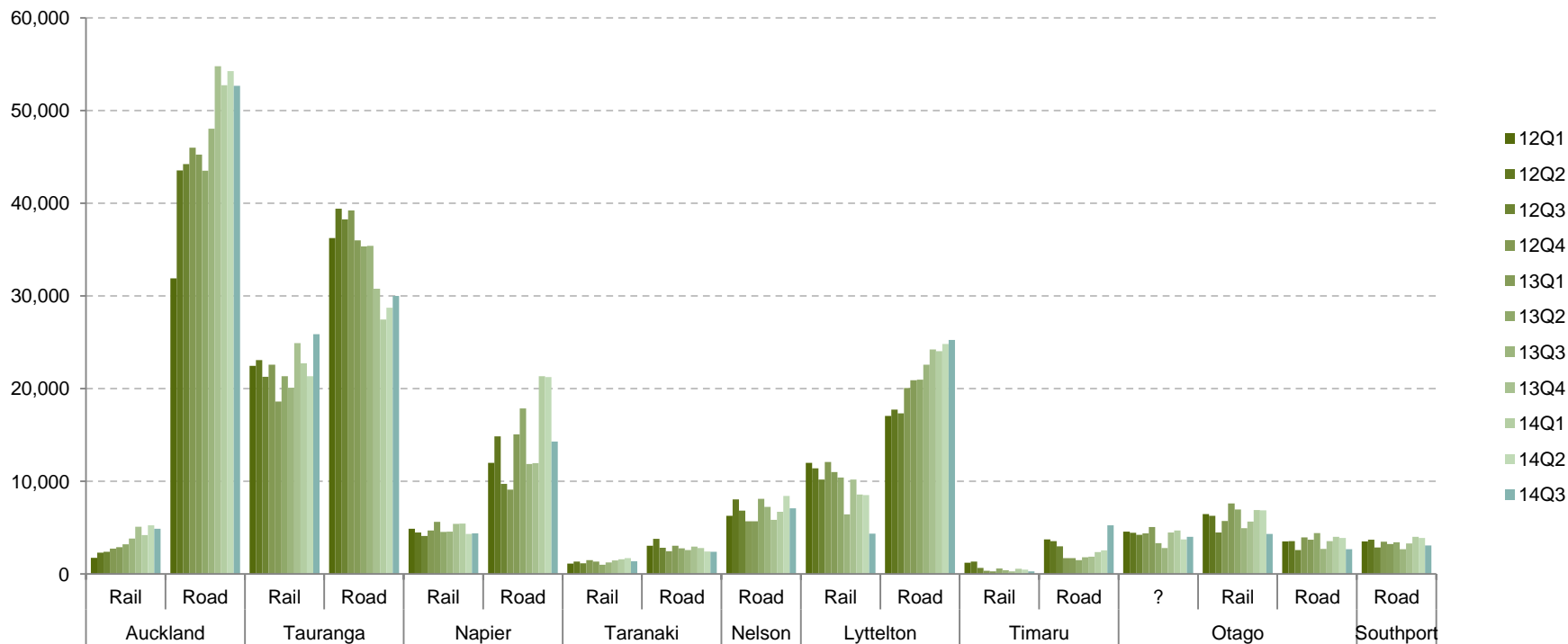
# Container ships visiting New Zealand



# TEU exchanges per visit



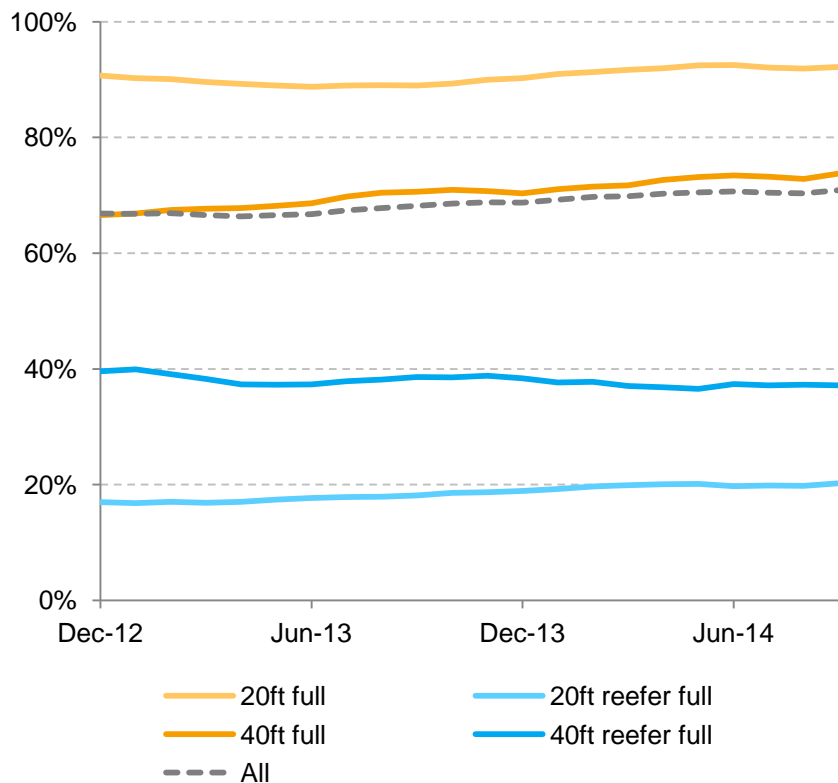
# Road and rail container movements into ports



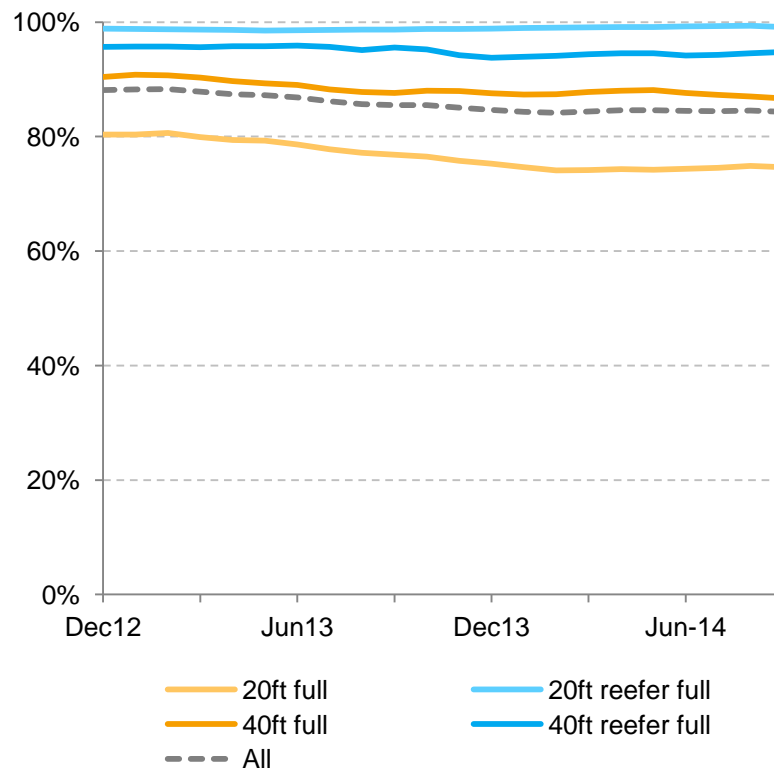
# Full container movements



## Imports

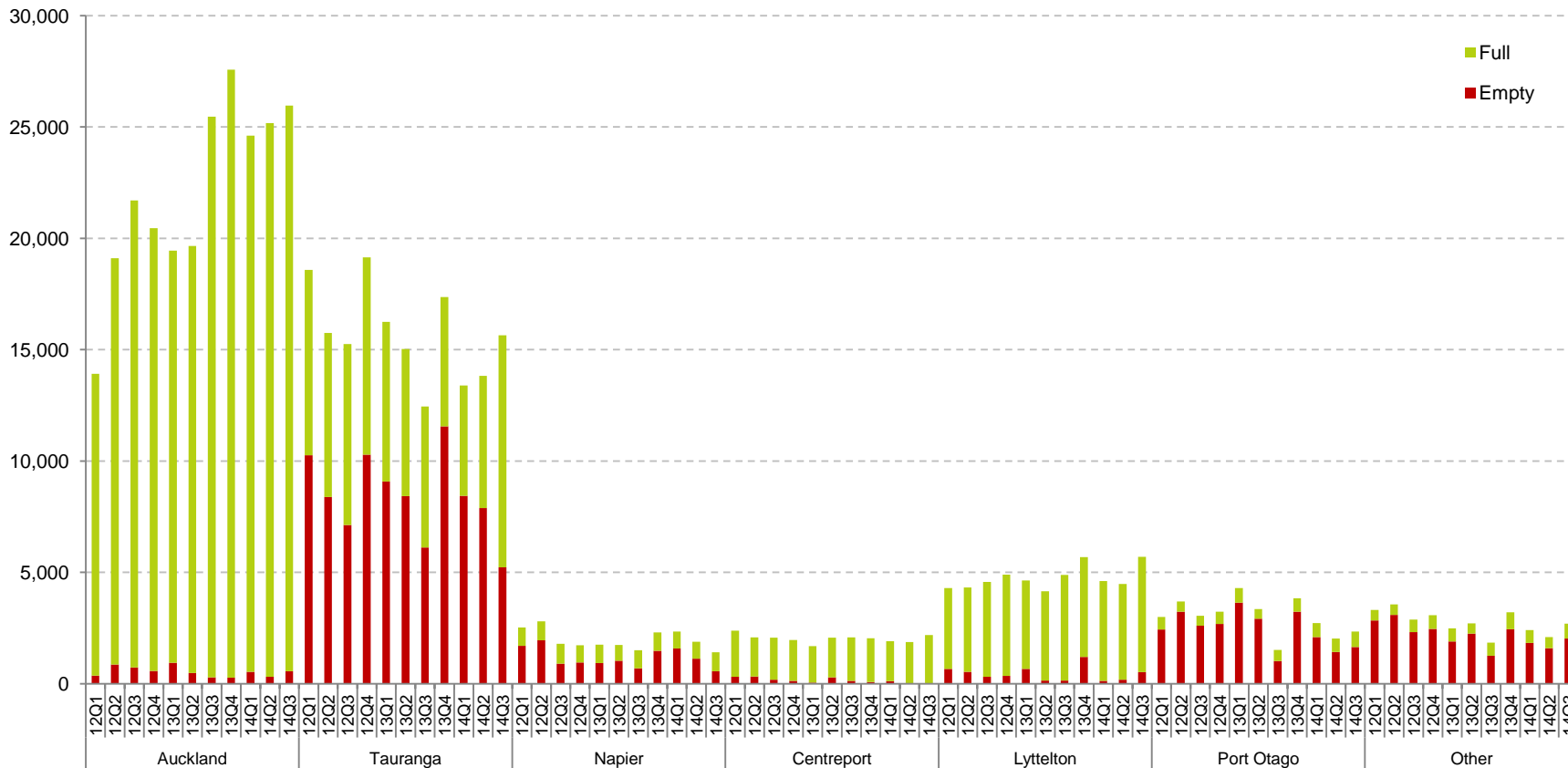


## Exports

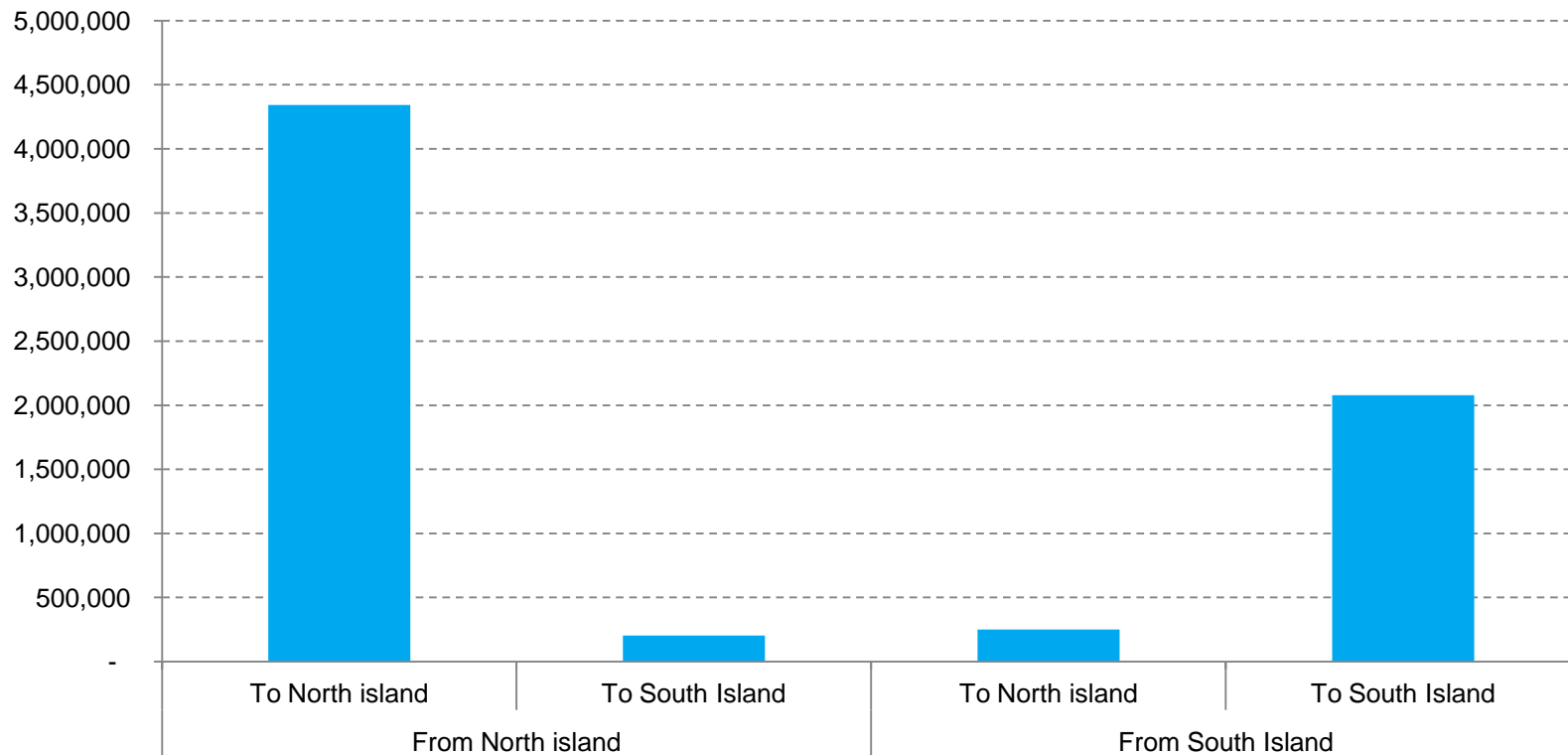




# The port picture – imports of 40 ft dry containers



# Rail freight: Containerised tonnage Oct 13-Sept 14



[www.transport.govt.nz/sea/figs/](http://www.transport.govt.nz/sea/figs/)

Thank you

