

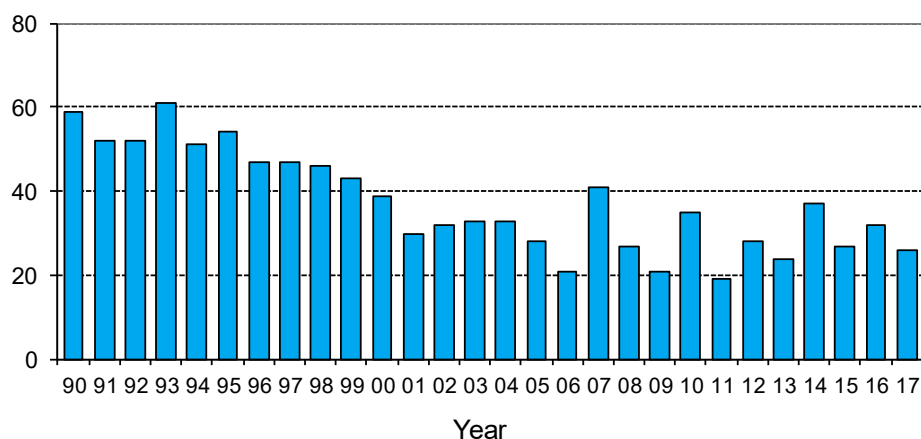
Monthly road crash statistics update

November deaths (2017)

The data presented here are provisional. Crash data as at 11th December 2017.

- Twenty-six people died on New Zealand roads in November. This is 6 fewer than November 2016 and is 4 fewer than the average November road toll for the last five years.

November deaths



- To the end of November this year, 340 people have died on New Zealand roads. This is 44 more than at the same time last year.
- In the 12 months to the end of November 2017, 371 people died on our roads. This is 43 more than the 12 months to the end of November 2016.
- During November, 9 of the deaths were car or van drivers, 7 were car or van passengers, 5 were motorcyclists, 4 were pedestrians and 1 was a cyclist.
- Twenty-two of the 26 deaths were in open road crashes. Eight were in single vehicle crashes in which a driver lost control of the vehicle or ran off the road, 6 were in head-on collisions, 4 were in overtaking crashes and 4 were in collisions with pedestrians.
- Seven of the 26 deaths were in collisions involving a truck.
- Of the 16 vehicle occupants who died, 3 were not restrained at the time of the crash.

Deaths and Police reported injuries by age, sex and type of road user

Deaths are for the 12 months to the end of November 2017. Reported injuries are for the 12 months to the end of June 2017.

Note: Preliminary fatal crash reports are submitted within 24 hours of a crash related death. Full injury crash reports are submitted only after the crash investigations are completed, so there is a lag in the reporting of injury crashes.

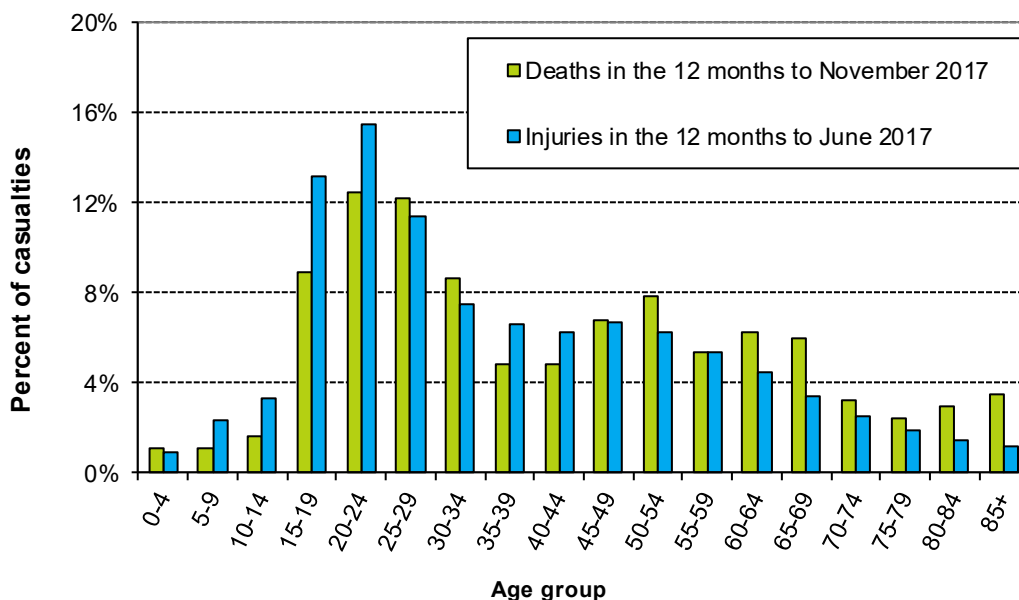
Road user type by sex

Sex	Drivers		Passengers		Motorcyclists		Pedestrians		Cyclists		Other		Total	
	Killed	Injured	Killed	Injured	Killed	Injured	Killed	Injured	Killed	Injured	Killed	Injured	Killed	Injured
Male	144	4144	45	1250	44	1042	25	476	15	533	0	40	273	7485
Female	44	3274	37	1784	1	201	14	410	2	189	0	20	98	5878
Total	188	7418	82	3034	45	1243	39	886	17	722	0	60	371	13363
%male	77%	56%	55%	41%	98%	84%	64%	54%	88%	74%	-	67%	74%	56%

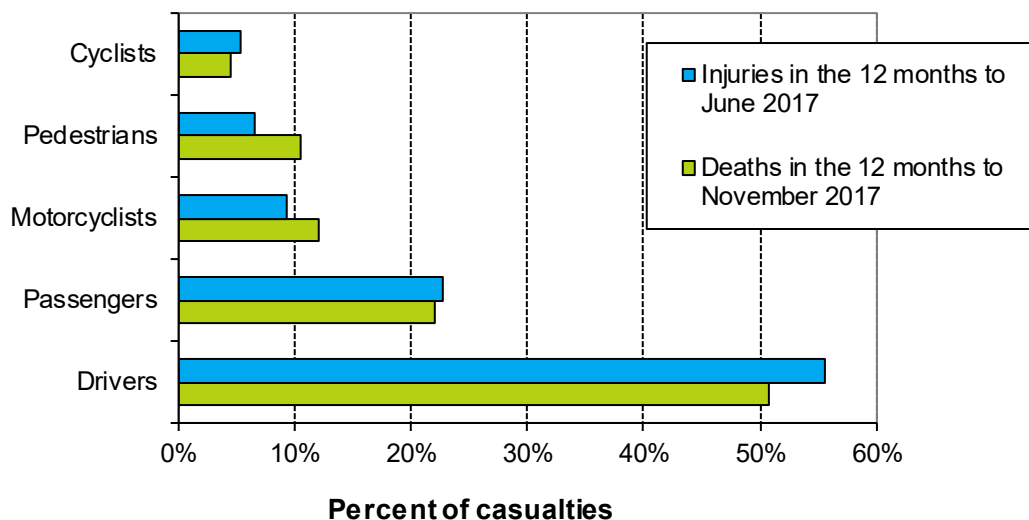
Road user type by age group

Age group	Drivers		Passengers		Motorcyclists		Pedestrians		Cyclists		Other		Total	
	Killed	Injured	Killed	Injured	Killed	Injured	Killed	Injured	Killed	Injured	Killed	Injured	Killed	Injured
Under-15	2	25	8	522	0	15	2	187	2	82	0	26	14	857
15-24	39	2047	28	1102	5	339	6	169	1	117	0	6	79	3780
25-34	36	1596	22	477	9	210	8	110	2	96	0	0	77	2489
35-44	22	1083	3	207	6	175	4	99	1	119	0	3	36	1686
45-54	22	984	8	224	14	275	6	70	4	143	0	3	54	1699
55-64	25	785	7	173	7	164	2	88	2	88	0	3	43	1301
65-74	19	482	3	132	4	51	4	69	4	43	0	1	34	778
75+	22	400	3	88	0	6	7	71	1	8	0	18	33	591
Unknown	1	16	0	109	0	8	0	23	0	26	0	0	1	182
Total	188	7418	82	3034	45	1243	39	886	17	722	0	60	371	13363

Deaths and reported injuries by age group

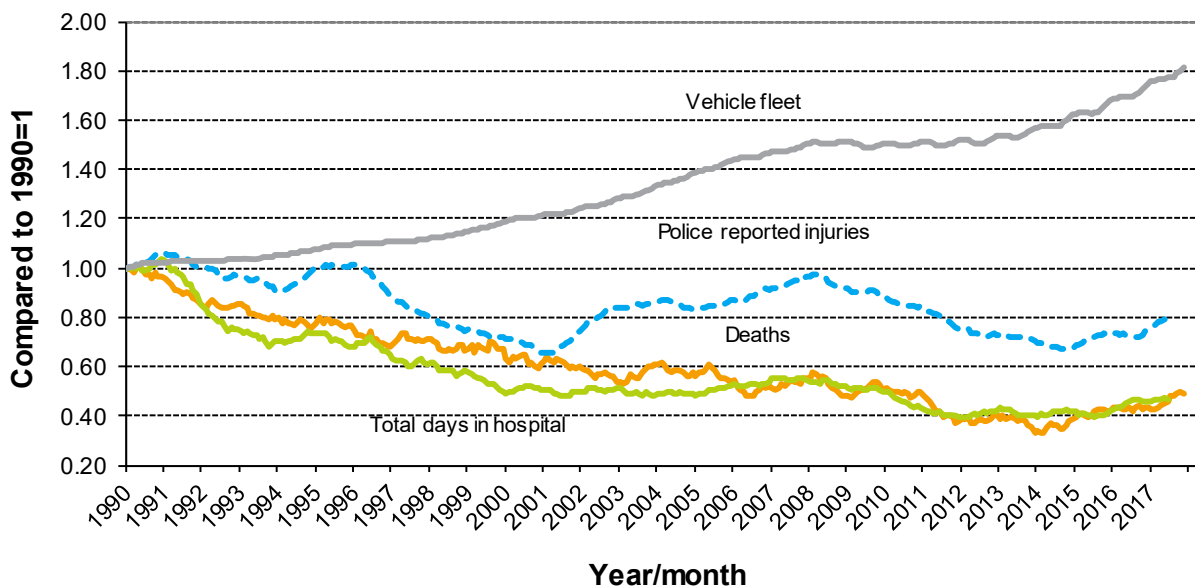


Types of road users killed and injured



Trends

Road crash casualties and vehicle fleet compared to 1990



Since 1990, the number of vehicles on the road has increased by 81 percent while Police reported injuries have dropped by 20 percent, road deaths have dropped by 51 percent and the number of days spent in hospital as a result of road crashes has dropped by 53 percent.

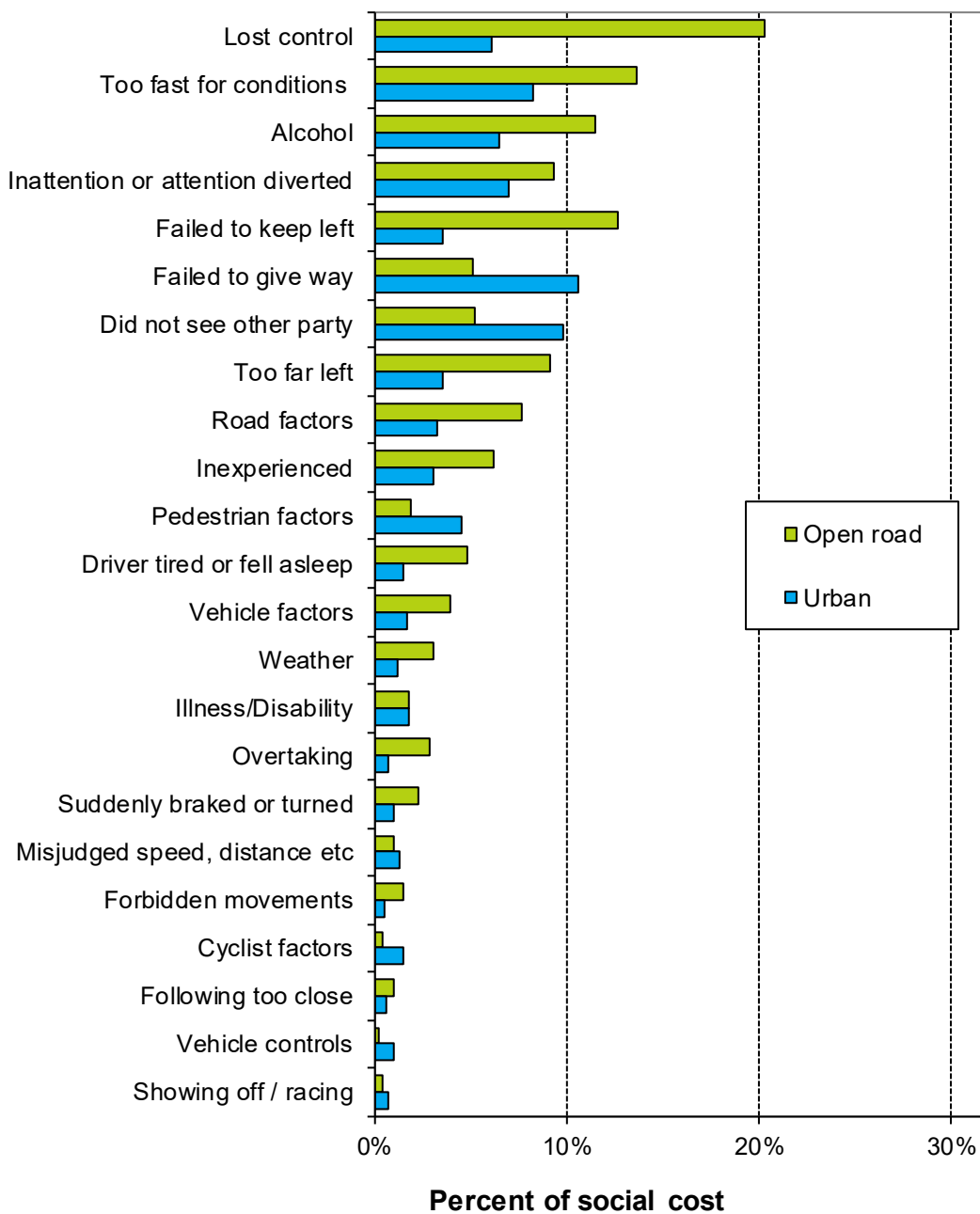
Crash outcomes and road user behaviour

Road Crash Data	2007	2008	2009	2010	2011	2012	2013	2014	2015	2016	2017
Deaths											
Number of road deaths	421	366	384	375	284	308	253	293	319	327	371
Deaths per 10,000 vehicles	1.3	1.1	1.2	1.2	0.88	0.95	0.77	0.86	0.91	0.89	0.97
Deaths per 100,000 people	10.0	8.6	8.9	8.6	6.4	6.9	5.7	6.5	6.9	7.0	7.7
Injuries											
Reported injuries	16013	15317	14625	14031	12574	12122	11781	11219	12270	12247	13363
Number hospitalised (all discharges)	7440	7570	7590	7360	6780	7070	7150	6940	7310	8020	8472
Number hospitalised for over 1 day	3404	3244	3042	2909	2707	2794	2886	2716	2902	3063	3172
Number hospitalised for over 3 days	2351	2210	2051	1918	1801	1872	1886	1752	1905	2000	2090
Behavioural Measures											
Speed											
Rural speed, % over 100 km/h	29%	30%	29%	29%	31%	25%	25%	22%	23%	n/a	
Rural speed, mean (km/h)	96.3	96.6	96.3	96.2	96.5	95.6	95.7	95.3	95.7	n/a	
Rural speed, 85th percentile (km/h)	103	103	103	103	103	102	102	101	101	n/a	
Alcohol											
Number of drivers killed with excess alcohol	65	59	66	68	48	49	38	31	51	50	
Percent of drivers killed with excess alcohol	27%	28%	28%	30%	26%	27%	23%	18%	25%	23%	
Occupant Restraints											
Seat belts worn by adults, front	95%	95%	95%	96%	96%	96%	n/a	97%	n/a	97%	
Seat belts worn by adults, rear	87%	87%	87%	88%	90%	n/a	n/a	92%	n/a	n/a	
Child restraints used, 0-4 years	91%	90%	91%	93%	n/a	92%	n/a	93%	n/a	93%	
Cycle helmets											
Cycle helmets worn, weekday	92%	92%	92%	93%	93%	92%	n/a	n/a	94%	n/a	

Note: Road deaths for 2017 are for the 12 months to the end of November 2017. Reported injuries for 2017 are for the 12 months to the end of June 2017. Hospitalisations for 2017 are for the 12 months to the end of June 2017.

Factors contributing to crashes – ranked by social cost*

Factors contributing to crashes



Notes: Crash data for the 12 months to the end of June 2017.

Since there can be several contributing factors for a single crash the figures represented in this graph add to more than 100%.

Alcohol data is not comparable to earlier years due to changes in the crash reporting process.

* Social cost calculations include loss of life or life quality, loss of output due to injuries, medical and rehabilitation costs, legal and court costs and property damage.