

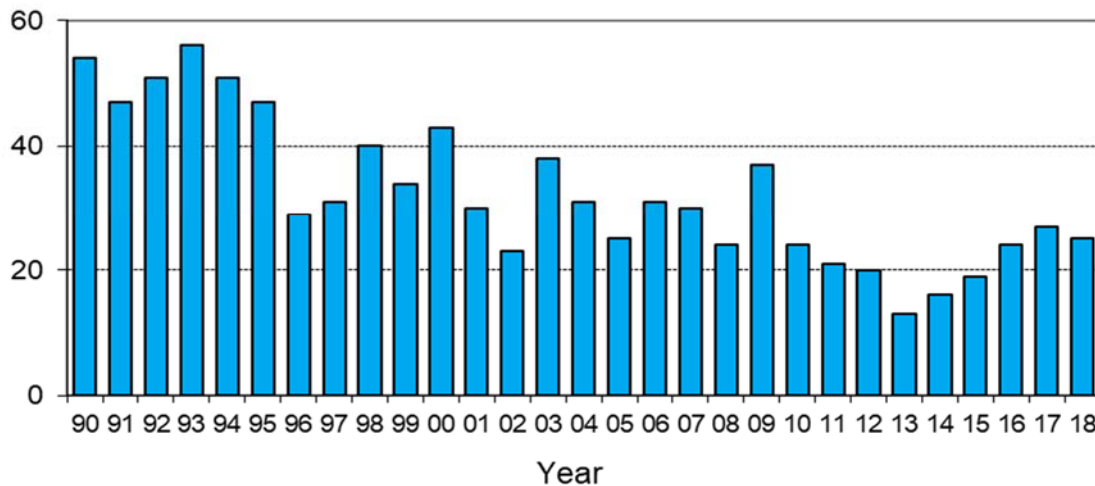
Monthly road crash statistics update

September Road Deaths (2018)

The data presented here are provisional. Crash data as at 11th October 2018.

- Twenty-five people died on New Zealand roads in September.
- This is two fewer than the number which died in September 2017 and is five more than the average number of September road deaths over the past five years.

September deaths



- To the end of September this year, 278 people have died on New Zealand roads. This is two fewer deaths than as at the same time last year.
- In the 12 months to the end of September 2018, 376 people died on our roads. This is ten more than the 12 months to the end of September 2017.
- During September: eleven of the deaths were car or van drivers plus two passengers, three were motorcyclists, and nine were pedestrians.
- Seventeen of the twenty-five deaths were in open road crashes. Six were in single vehicle crashes in which a driver lost control of the vehicle or ran off the road, six were in head-on crashes and two were in intersection crashes.
- Six of the twenty-five deaths were in collisions involving a truck.
- Of the thirteen vehicle occupants who died, seven were not restrained at the time of the crash.

Deaths and Police reported injuries by age, sex and type of road user

Deaths are for the 12 months to the end of September 2018. Reported injuries are for the 12 months to the end of April 2018.

Note: Preliminary fatal crash reports are submitted within 24 hours of a crash related death. Full injury crash reports are submitted only after the crash investigations are completed, so there is a lag in the reporting of injury crashes.

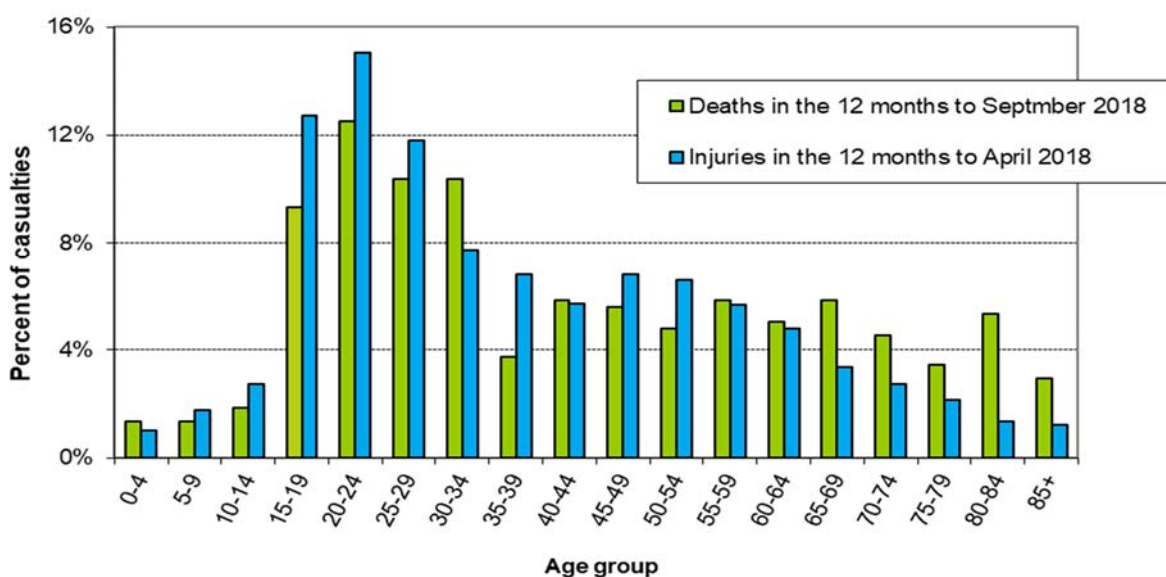
Road user type by sex

Sex	Drivers		Passengers		Motorcyclists		Pedestrians		Cyclists		Other		Total	
	Killed	Injured	Killed	Injured	Killed	Injured	Killed	Injured	Killed	Injured	Killed	Injured	Killed	Injured
Male	122	4408	41	1323	47	1132	26	540	6	580	1	35	243	8018
Female	55	3457	51	1727	7	229	18	455	2	197	0	8	133	6073
Total	177	7865	92	3050	54	1361	44	995	8	777	1	43	376	14091
%male	69%	56%	45%	43%	87%	83%	59%	54%	75%	75%	100%	81%	65%	57%

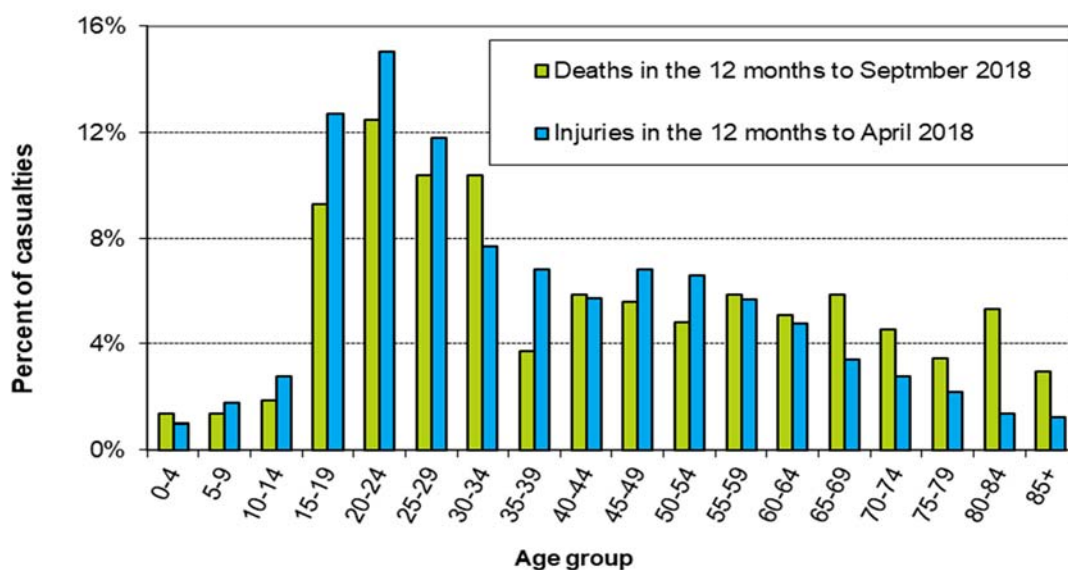
Road user type by age group

Age group	Drivers		Passengers		Motorcyclists		Pedestrians		Cyclists		Other		Total	
	Killed	Injured	Killed	Injured	Killed	Injured	Killed	Injured	Killed	Injured	Killed	Injured	Killed	Injured
Under-15	0	11	15	412	0	15	1	220	1	87	0	21	17	766
15-24	43	2077	23	1106	11	349	4	197	1	128	0	4	82	3861
25-34	39	1688	22	532	10	277	7	114	0	103	0	1	78	2715
35-44	19	1147	2	250	7	171	6	75	2	100	0	2	36	1745
45-54	18	1092	4	243	12	290	4	78	1	159	0	2	39	1864
55-64	19	872	8	190	9	184	3	107	1	96	1	4	41	1453
65-74	18	537	7	128	4	52	9	79	1	53	0	2	39	851
75+	21	415	11	106	1	10	10	95	1	22	0	7	44	655
Unknown	0	26	0	83	0	13	0	30	0	29	0	0	0	181
Total	177	7865	92	3050	54	1361	44	995	8	777	1	43	376	14091

Deaths and reported injuries by age group

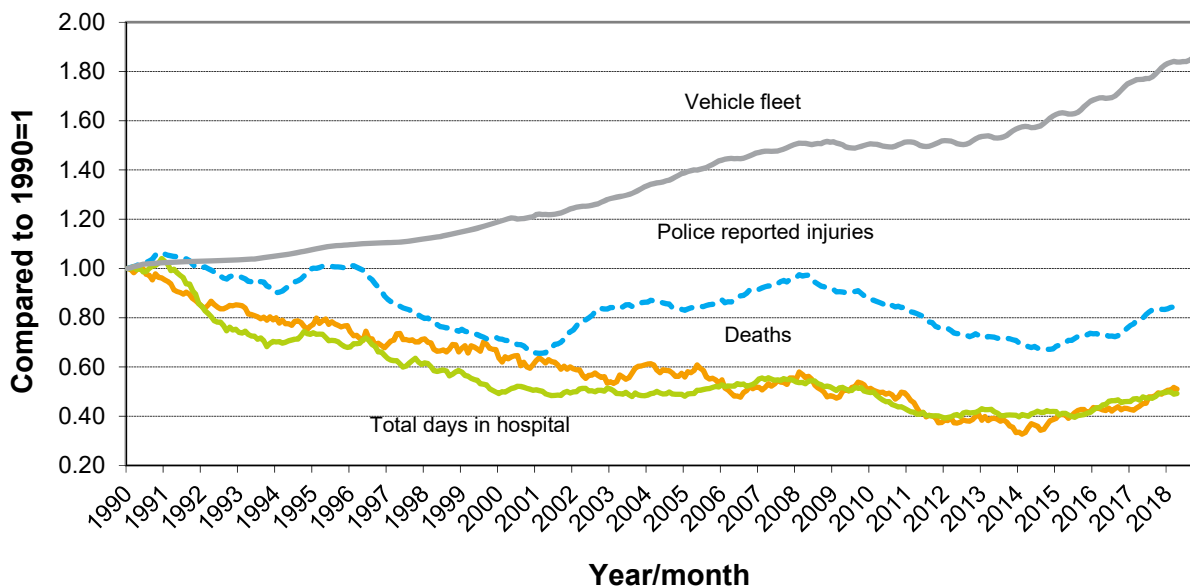


Deaths and reported injuries by age group



Trends

Road crash casualties and vehicle fleet compared to 1990



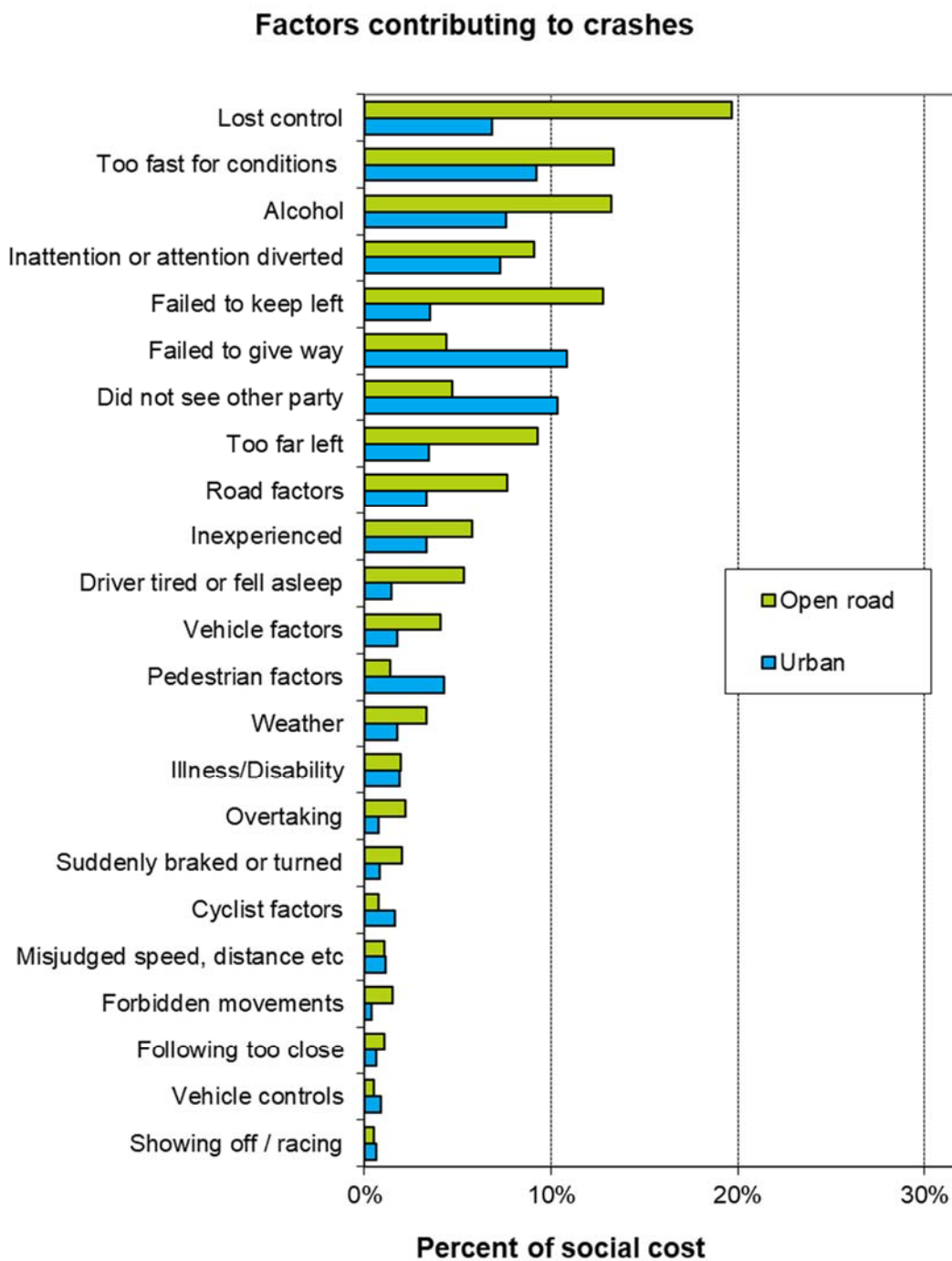
Since 1990, the number of vehicles on the road has increased by 85 percent while Police reported injuries have dropped by 15 percent, road deaths have dropped by 49 percent and the number of days spent in hospital as a result of road crashes has dropped by 51 percent.

Crash outcomes and road user behaviour

Road Crash Data	2008	2009	2010	2011	2012	2013	2014	2015	2016	2017	2018
Deaths											
Number of road deaths	366	384	375	284	308	253	293	319	327	378	376
Deaths per 10,000 vehicles	1.1	1.2	1.2	0.88	0.95	0.77	0.86	0.91	0.89	0.99	0.95
Deaths per 100,000 people	8.6	8.9	8.6	6.4	6.9	5.7	6.5	6.9	7.0	7.9	7.7
Injuries											
Reported injuries	15317	14625	14031	12574	12122	11781	11219	12270	12625	13881	14091
Number hospitalised (all discharges)	7570	7590	7360	6780	7070	7150	6940	7310	8040	8740	8848
Number hospitalised for over 1 day	3244	3042	2909	2707	2794	2886	2716	2902	3065	3387	3109
Number hospitalised for over 3 days	2210	2051	1918	1801	1872	1886	1752	1905	2001	2221	2026
Behavioural Measures											
Speed											
Rural speed, % over 100 km/h	30%	29%	29%	31%	25%	25%	22%	23%	n/a	n/a	n/a
Rural speed, mean (km/h)	96.6	96.3	96.2	96.5	95.6	95.7	95.3	95.7	n/a	n/a	n/a
Rural speed, 85th percentile (km/h)	103	103	103	103	102	102	101	101	n/a	n/a	n/a
Alcohol											
Number of drivers killed with excess alcohol	59	66	68	48	49	38	31	51	50	n/a	n/a
Percent of drivers killed with excess alcohol	28%	28%	30%	26%	27%	23%	18%	25%	23%	n/a	n/a
Occupant Restraints											
Seat belts worn by adults, front	95%	95%	96%	96%	96%	n/a	97%	n/a	97%	n/a	n/a
Seat belts worn by adults, rear	87%	87%	88%	90%	n/a	n/a	92%	n/a	n/a	n/a	n/a
Child restraints used, 0-4 years	90%	91%	93%	n/a	92%	n/a	93%	n/a	93%	n/a	n/a
Cycle helmets											
Cycle helmets worn, weekday	92%	92%	93%	93%	92%	n/a	n/a	94%	n/a	n/a	n/a

Note: Road deaths for 2018 are for the 12 months to the end of September 2018. Reported injuries and Hospitalisations are for the 12 months to the end of April 2018.

Factors contributing to crashes – ranked by social cost*



Notes: Crash data for the 12 months to the end of April 2018.

Since there can be several contributing factors for a single crash the figures represented in this graph add to more than 100%.

Alcohol data is not comparable to earlier years due to changes in the crash reporting process.

* Social cost calculations include loss of life or life quality, loss of output due to injuries, medical and rehabilitation costs, legal and court costs and property damage.