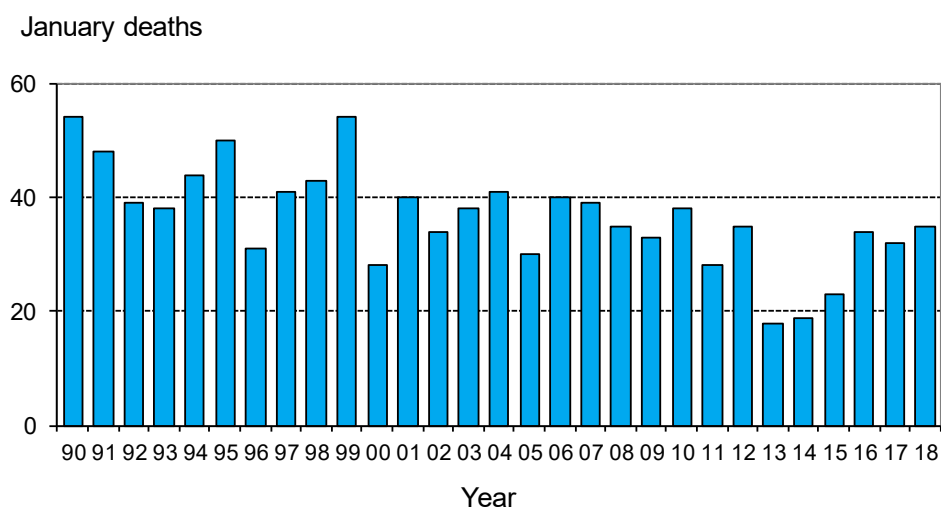


Monthly road crash statistics update

January deaths (2018)

The data presented here are provisional. Crash data as at 7th February 2018.

- Thirty-five people died on New Zealand roads in January. This is 3 more than January 2017 and is 10 more than the average January road toll for the last five years.



- In the 12 months to the end of January 2018, 382 people died on our roads. This is 57 more than the 12 months to the end of January 2017.
- During January, 16 of the deaths were car or van drivers, 10 were motorcyclists, 6 were car or van passengers, 1 was a pedestrian, 1 was a truck driver and 1 was a cyclist.
- Twenty-six of the 35 deaths were in open road crashes. Thirteen were in head-on collisions, 10 were in intersection collisions, 7 were in single vehicle crashes in which a driver lost control of the vehicle or ran off the road and 3 were in overtaking crashes.
- Seven of the 35 deaths were in collisions involving a truck.
- Of the 23 vehicle occupants who died, 4 were not restrained at the time of the crash.

Deaths and Police reported injuries by age, sex and type of road user

Deaths are for the 12 months to the end of January 2018. Reported injuries are for the 12 months to the end of August 2017.

Note: Preliminary fatal crash reports are submitted within 24 hours of a crash related death. Full injury crash reports are submitted only after the crash investigations are completed, so there is a lag in the reporting of injury crashes.

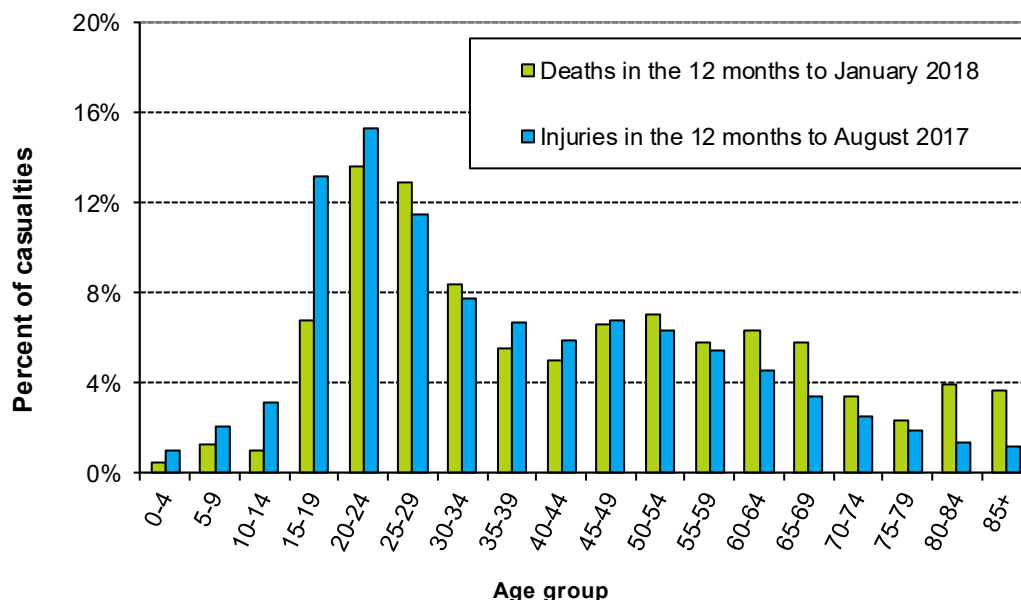
Road user type by sex

Sex	Drivers		Passengers		Motorcyclists		Pedestrians		Cyclists		Other		Total	
	Killed	Injured	Killed	Injured	Killed	Injured	Killed	Injured	Killed	Injured	Killed	Injured	Killed	Injured
Male	146	4256	43	1311	49	1091	23	502	15	552	0	41	276	7753
Female	51	3392	37	1750	4	203	12	423	2	205	0	16	106	5989
Total	197	7648	80	3061	53	1294	35	925	17	757	0	57	382	13742
%male	74%	56%	54%	43%	92%	84%	66%	54%	88%	73%	-	72%	72%	56%

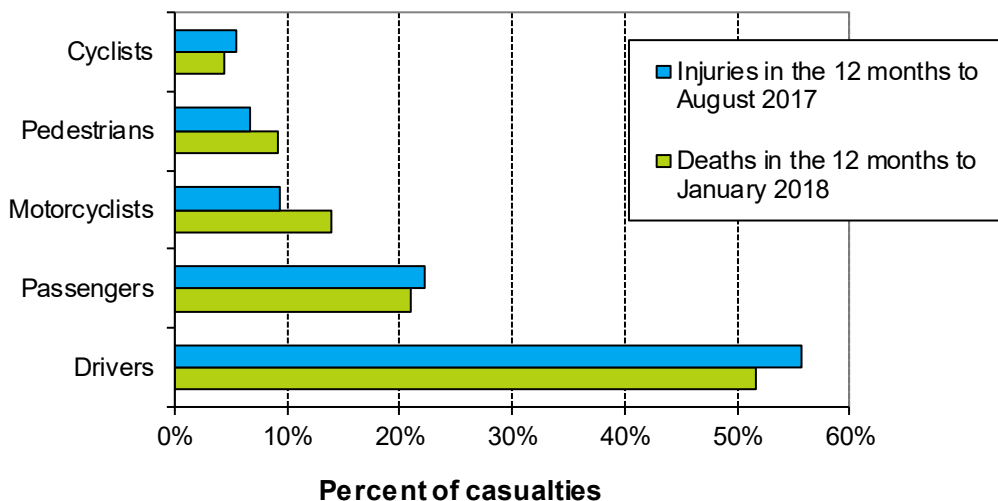
Road user type by age group

Age group	Drivers		Passengers		Motorcyclists		Pedestrians		Cyclists		Other		Total	
	Killed	Injured	Killed	Injured	Killed	Injured	Killed	Injured	Killed	Injured	Killed	Injured	Killed	Injured
Under-15	2	18	5	506	0	16	2	200	2	82	0	25	11	847
15-24	42	2086	26	1119	7	354	2	164	1	136	0	6	78	3865
25-34	38	1670	20	495	13	225	8	118	2	99	0	0	81	2607
35-44	24	1100	4	209	8	179	4	96	0	118	0	3	40	1705
45-54	24	1036	6	235	13	282	4	68	5	147	0	4	52	1772
55-64	26	816	8	180	8	171	2	95	2	94	0	3	46	1359
65-74	17	503	5	127	4	51	5	78	4	44	0	1	35	804
75+	23	404	6	86	0	8	8	80	1	9	0	15	38	602
Unknown	1	15	0	104	0	8	0	26	0	28	0	0	1	181
Total	197	7648	80	3061	53	1294	35	925	17	757	0	57	382	13742

Deaths and reported injuries by age group

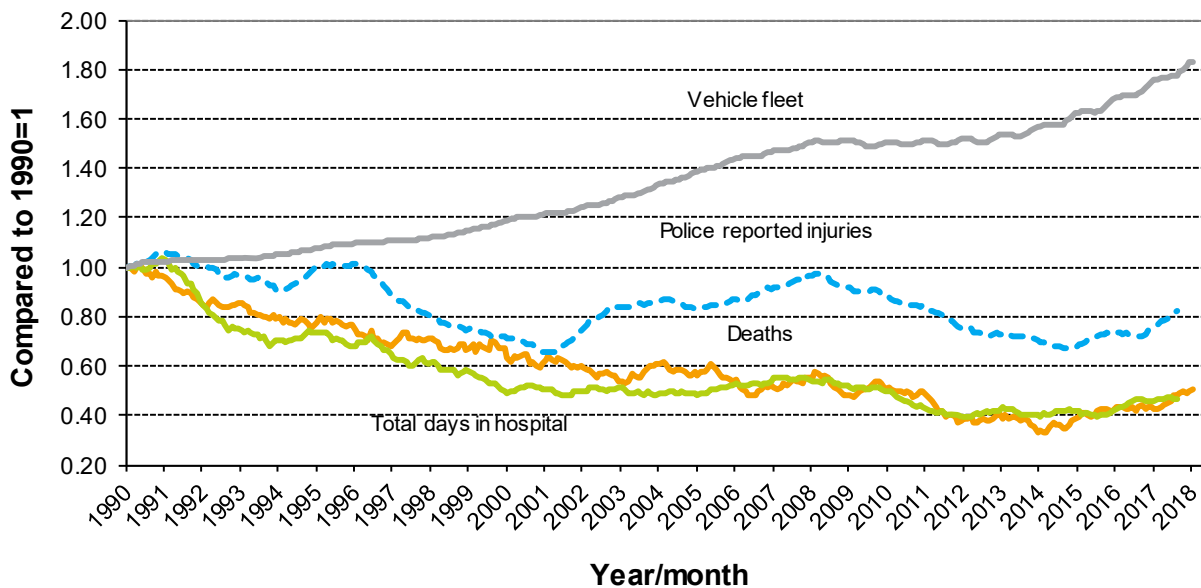


Types of road users killed and injured



Trends

Road crash casualties and vehicle fleet compared to 1990



Since 1990, the number of vehicles on the road has increased by 83 percent while Police reported injuries have dropped by 18 percent, road deaths have dropped by 50 percent and the number of days spent in hospital as a result of road crashes has dropped by 53 percent.

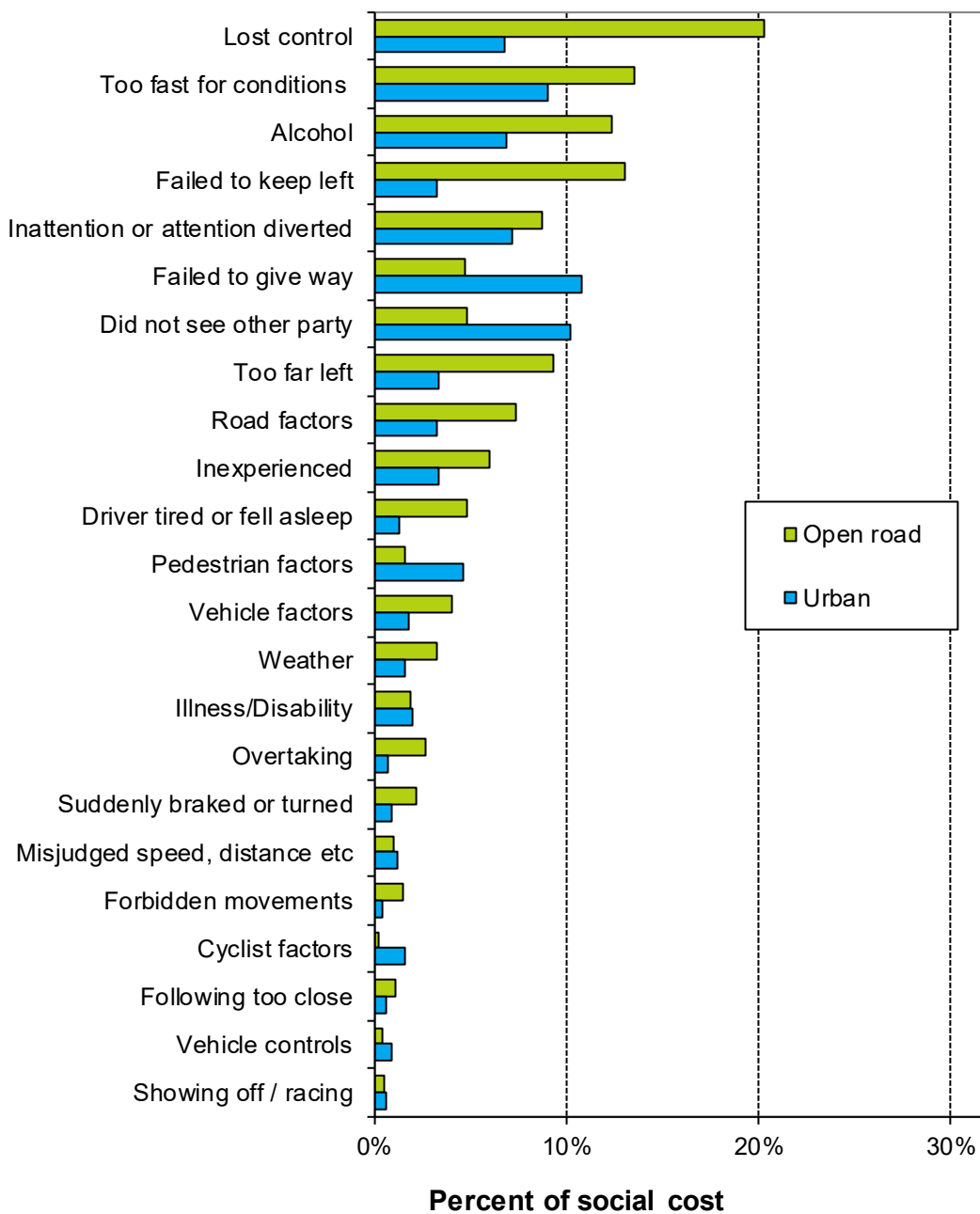
Crash outcomes and road user behaviour

Road Crash Data	2008	2009	2010	2011	2012	2013	2014	2015	2016	2017	2018
Deaths											
Number of road deaths	366	384	375	284	308	253	293	319	327	379	382
Deaths per 10,000 vehicles	1.1	1.2	1.2	0.88	0.95	0.77	0.86	0.91	0.89	0.99	1.00
Deaths per 100,000 people	8.6	8.9	8.6	6.4	6.9	5.7	6.5	6.9	7.0	7.9	8.0
Injuries											
Reported injuries	15317	14625	14031	12574	12122	11781	11219	12270	12247	13742	
Number hospitalised (all discharges)	7570	7590	7360	6780	7070	7150	6940	7310	8020	8538	
Number hospitalised for over 1 day	3244	3042	2909	2707	2794	2886	2716	2902	3063	3213	
Number hospitalised for over 3 days	2210	2051	1918	1801	1872	1886	1752	1905	2000	2095	
Behavioural Measures											
Speed											
Rural speed, % over 100 km/h	30%	29%	29%	31%	25%	25%	22%	23%	n/a	n/a	
Rural speed, mean (km/h)	96.6	96.3	96.2	96.5	95.6	95.7	95.3	95.7	n/a	n/a	
Rural speed, 85th percentile (km/h)	103	103	103	103	102	102	101	101	n/a	n/a	
Alcohol											
Number of drivers killed with excess alcohol	59	66	68	48	49	38	31	51	50		
Percent of drivers killed with excess alcohol	28%	28%	30%	26%	27%	23%	18%	25%	23%		
Occupant Restraints											
Seat belts worn by adults, front	95%	95%	96%	96%	96%	n/a	97%	n/a	97%	n/a	
Seat belts worn by adults, rear	87%	87%	88%	90%	n/a	n/a	92%	n/a	n/a	n/a	
Child restraints used, 0-4 years	90%	91%	93%	n/a	92%	n/a	93%	n/a	93%	n/a	
Cycle helmets											
Cycle helmets worn, weekday	92%	92%	93%	93%	92%	n/a	n/a	94%	n/a	n/a	

Note: Road deaths for 2018 are for the 12 months to the end of January 2018. Reported injuries for 2017 are for the 12 months to the end of August 2017. Hospitalisations for 2017 are for the 12 months to the end of August 2017.

Factors contributing to crashes – ranked by social cost*

Factors contributing to crashes



Notes: Crash data for the 12 months to the end of August 2017.

Since there can be several contributing factors for a single crash the figures represented in this graph add to more than 100%.

Alcohol data is not comparable to earlier years due to changes in the crash reporting process.

* Social cost calculations include loss of life or life quality, loss of output due to injuries, medical and rehabilitation costs, legal and court costs and property damage.