

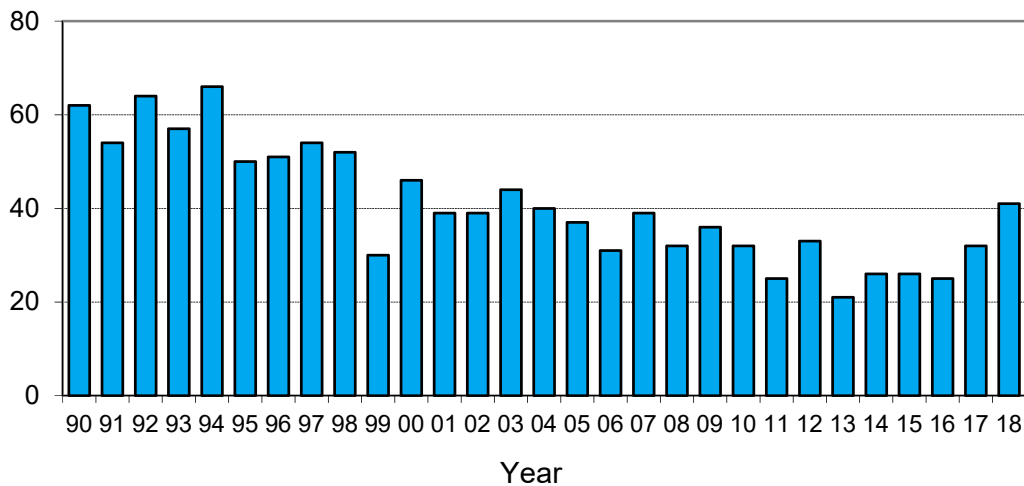
Monthly road crash statistics update

March deaths (2018)

The data presented here are provisional. Crash data as at 10th April 2018.

- Forty-one people died on New Zealand roads in March. This is nine more than in March 2017 and is fifteen more than the average March road toll for the last five years.

March deaths



- To the end of March this year, 106 people have died on New Zealand roads. This is fourteen more than at the same time last year.
- In the 12 months to the end of March 2018, 394 people died on our roads. This is sixty-four more than the 12 months to the end of March 2017.
- During March, nineteen of the deaths were car or van drivers, eight were car or van passengers, two were SUV drivers, five were motorcyclists, four were a pedestrian, one was a taxi driver and two were taxi passengers.
- Thirty-one of the forty-one deaths were in open road crashes. Eight were in single vehicle crashes in which a driver lost control of the vehicle or ran off the road, sixteen were in head-on collisions and three were in intersection collisions.
- Twelve of the forty-one deaths were in collisions involving a truck.
- Of the thirty-five vehicle occupants who died, four were not restrained at the time of the crash.

Deaths and Police reported injuries by age, sex and type of road user

Deaths are for the 12 months to the end of March 2018. Reported injuries are for the 12 months to the end of October 2017.

Note: Preliminary fatal crash reports are submitted within 24 hours of a crash related death. Full injury crash reports are submitted only after the crash investigations are completed, so there is a lag in the reporting of injury crashes.

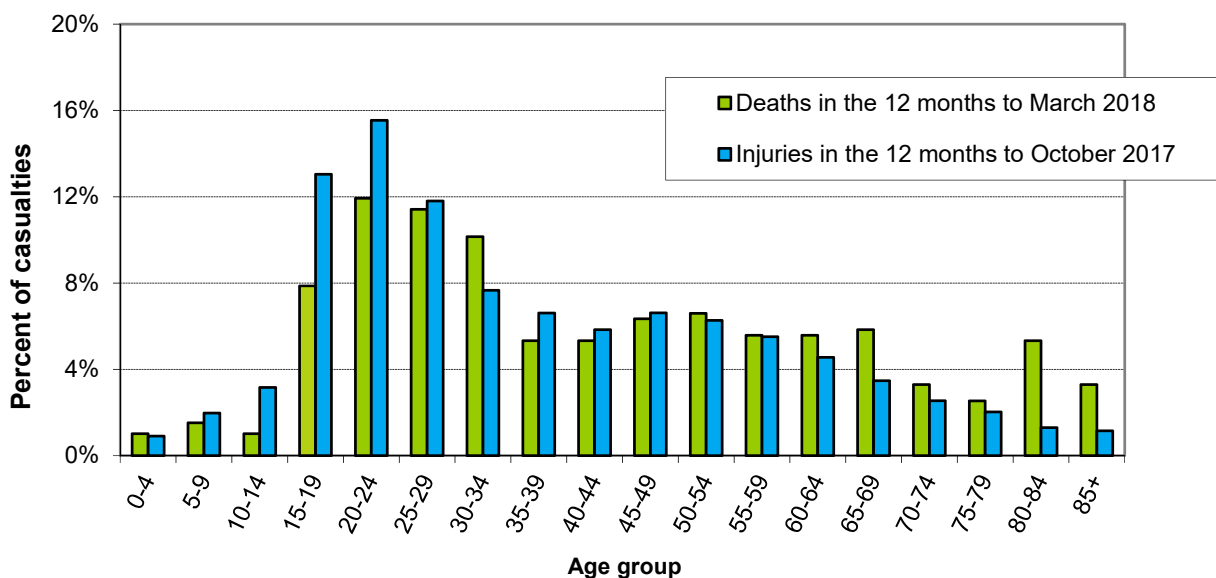
Road user type by sex

Sex	Drivers		Passengers		Motorcyclists		Pedestrians		Cyclists		Other		Total	
	Killed	Injured	Killed	Injured	Killed	Injured	Killed	Injured	Killed	Injured	Killed	Injured	Killed	Injured
Male	146	4343	47	1367	56	1108	21	495	13	554	1	33	284	7900
Female	54	3372	36	1762	4	199	14	440	2	201	0	17	110	5991
Total	200	7715	83	3129	60	1307	35	935	15	755	1	50	394	13891
%male	75%	56%	55%	44%	93%	84%	66%	53%	88%	73%	100%	68%	73%	57%

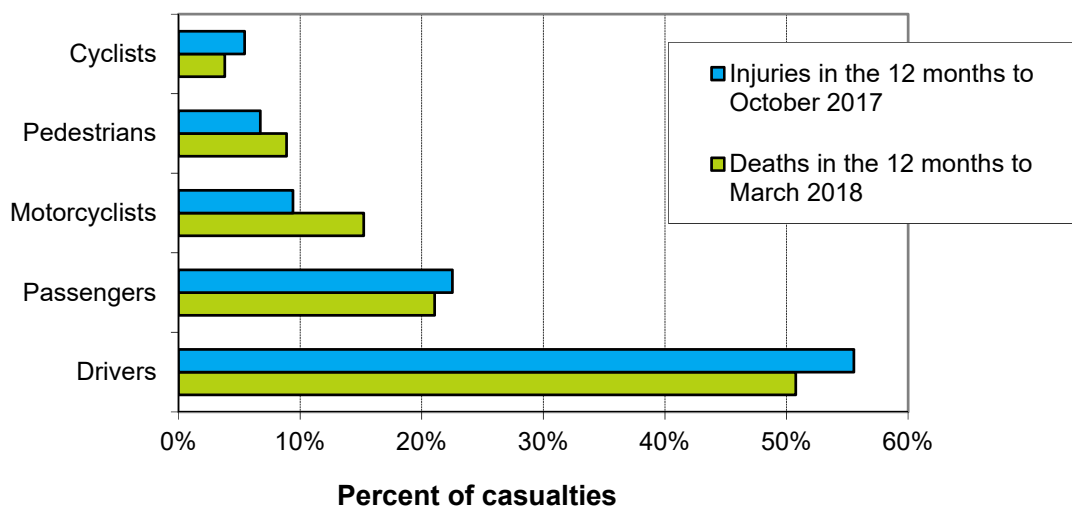
Road user type by age group

Age group	Drivers		Passengers		Motorcyclists		Pedestrians		Cyclists		Other		Total	
	Killed	Injured	Killed	Injured	Killed	Injured	Killed	Injured	Killed	Injured	Killed	Injured	Killed	Injured
Under-15	2	17	8	491	0	18	2	202	2	79	0	21	14	828
15-24	42	2102	22	1149	10	359	3	171	1	132	0	4	78	3917
25-34	39	1696	24	527	13	235	8	110	1	100	0	0	85	2668
35-44	25	1106	3	220	10	171	4	89	0	117	0	3	42	1706
45-54	23	1026	6	237	14	277	3	67	5	155	0	4	51	1766
55-64	23	833	8	181	10	175	1	100	1	89	1	3	44	1381
65-74	19	509	5	135	3	53	5	82	4	44	0	2	36	825
75+	27	409	7	88	0	8	9	87	1	9	0	13	44	614
Unknown	0	17	0	101	0	11	0	27	0	30	0	0	0	186
Total	200	7715	83	3129	60	1307	35	935	15	755	1	50	394	13891

Deaths and reported injuries by age group

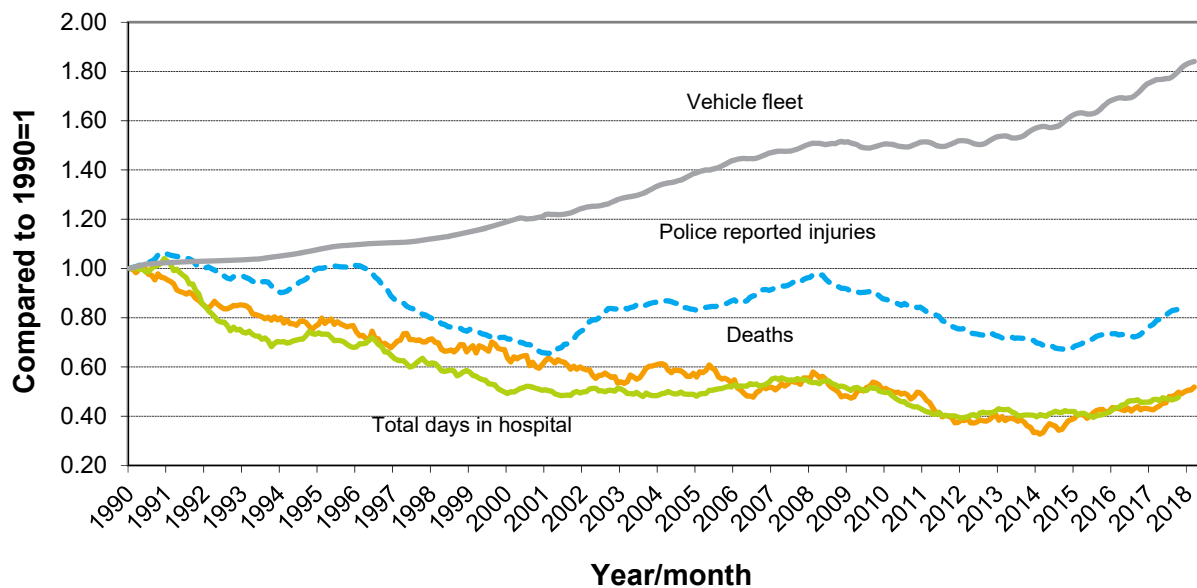


Types of road users killed and injured



Trends

Road crash casualties and vehicle fleet compared to 1990



Since 1990, the number of vehicles on the road has increased by 84 percent while Police reported injuries have dropped by 17 percent, road deaths have dropped by 48 percent and the number of days spent in hospital as a result of road crashes has dropped by 52 percent.

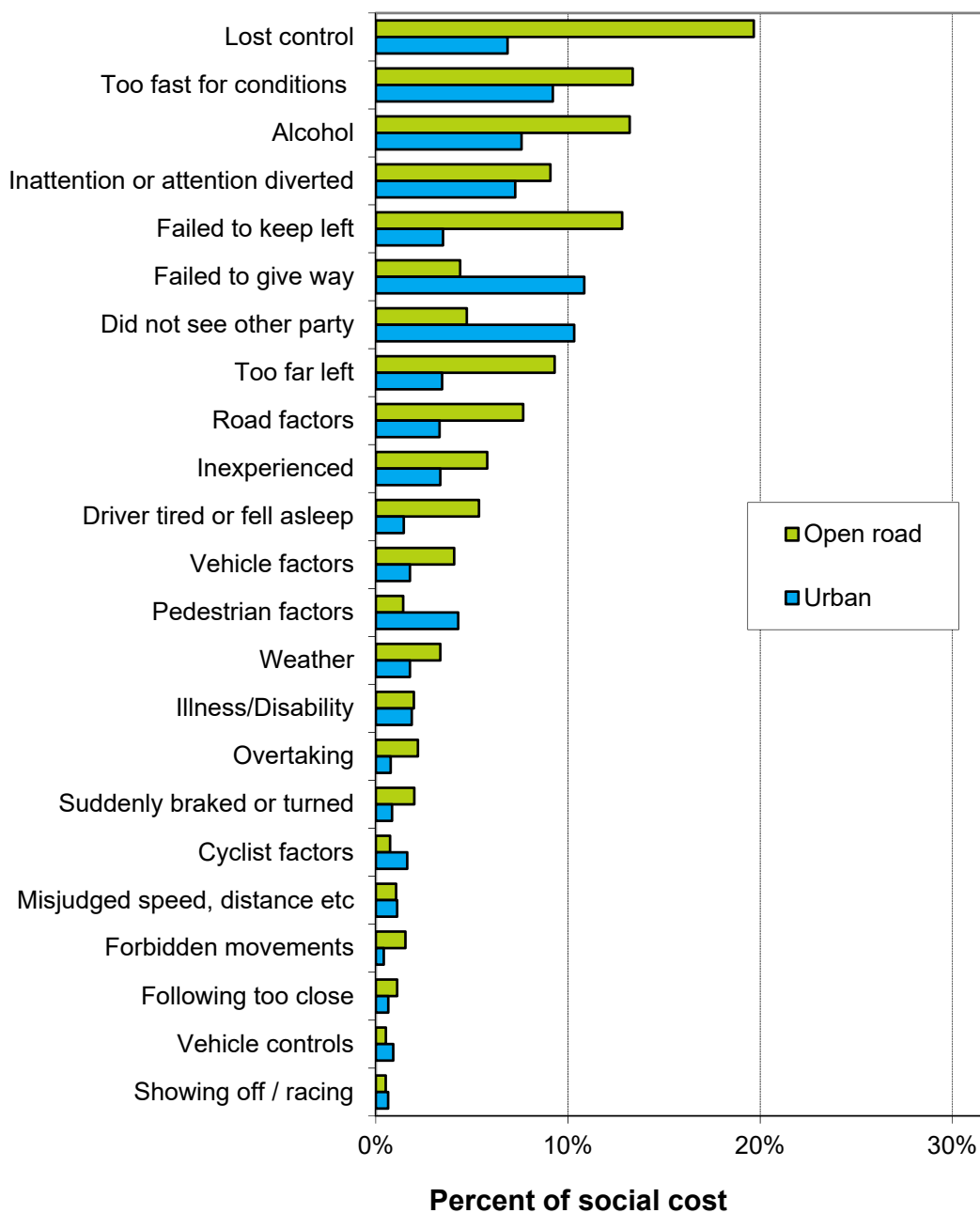
Crash outcomes and road user behaviour

Road Crash Data	2008	2009	2010	2011	2012	2013	2014	2015	2016	2017	2018
Deaths											
Number of road deaths	366	384	375	284	308	253	293	319	327	379	393
Deaths per 10,000 vehicles	1.1	1.2	1.2	0.88	0.95	0.77	0.86	0.91	0.89	0.99	1.03
Deaths per 100,000 people	8.6	8.9	8.6	6.4	6.9	5.7	6.5	6.9	7.0	7.9	8.2
Injuries											
Reported injuries	15317	14625	14031	12574	12122	11781	11219	12270	12249	13891	
Number hospitalised (all discharges)	7570	7590	7360	6780	7070	7150	6940	7310	8040	8696	
Number hospitalised for over 1 day	3244	3042	2909	2707	2794	2886	2716	2902	3063	3313	
Number hospitalised for over 3 days	2210	2051	1918	1801	1872	1886	1752	1905	1999	2175	
Behavioural Measures											
Speed											
Rural speed, % over 100 km/h	30%	29%	29%	31%	25%	25%	22%	23%	n/a	n/a	
Rural speed, mean (km/h)	96.6	96.3	96.2	96.5	95.6	95.7	95.3	95.7	n/a	n/a	
Rural speed, 85th percentile (km/h)	103	103	103	103	102	102	101	101	n/a	n/a	
Alcohol											
Number of drivers killed with excess alcohol	59	66	68	48	49	38	31	51	50		
Percent of drivers killed with excess alcohol	28%	28%	30%	26%	27%	23%	18%	25%	23%		
Occupant Restraints											
Seat belts worn by adults, front	95%	95%	96%	96%	96%	n/a	97%	n/a	97%	n/a	
Seat belts worn by adults, rear	87%	87%	88%	90%	n/a	n/a	92%	n/a	n/a	n/a	
Child restraints used, 0-4 years	90%	91%	93%	n/a	92%	n/a	93%	n/a	93%	n/a	
Cycle helmets											
Cycle helmets worn, weekday	92%	92%	93%	93%	92%	n/a	n/a	94%	n/a	n/a	

Note: Road deaths for 2018 are for the 12 months to the end of March 2018. Reported injuries for 2017 are for the 12 months to the end of October 2017. Hospitalisations for 2017 are for the 12 months to the end of October 2017.

Factors contributing to crashes – ranked by social cost*

Factors contributing to crashes



Notes: Crash data for the 12 months to the end of October 2017.

Since there can be several contributing factors for a single crash the figures represented in this graph add to more than 100%.

Alcohol data is not comparable to earlier years due to changes in the crash reporting process.

* Social cost calculations include loss of life or life quality, loss of output due to injuries, medical and rehabilitation costs, legal and court costs and property damage.