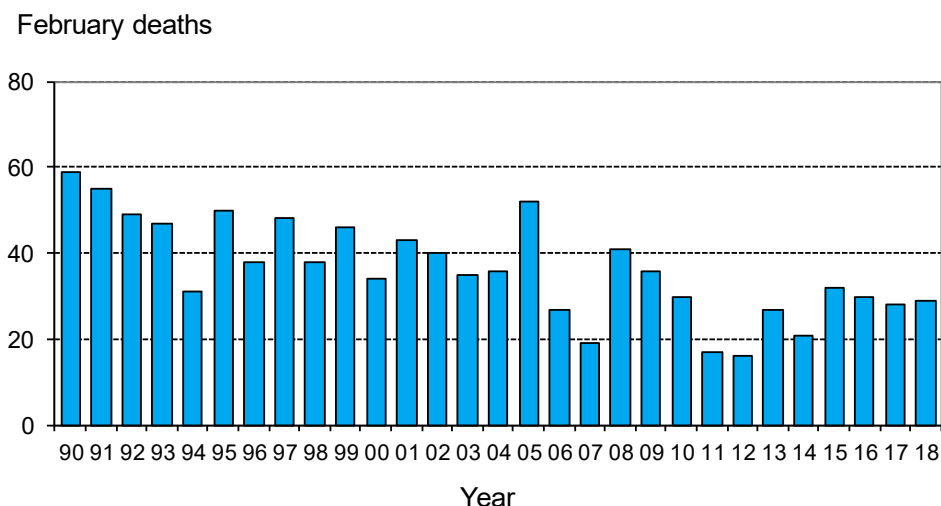


# Monthly road crash statistics update

## February deaths (2018)

The data presented here are provisional. Crash data as at 6<sup>th</sup> March 2018.

- Twenty-nine people died on New Zealand roads in February. This is 1 more than February 2017 and is 1 more than the average February road toll for the last five years.



- To the end of February this year, 65 people have died on New Zealand roads. This is 5 more than at the same time last year.
- In the 12 months to the end of February 2018, 384 people died on our roads. This is 61 more than the 12 months to the end of February 2017.
- During February, 11 of the deaths were car or van drivers, 9 were car or van passengers, 6 were motorcyclists, 1 was a pedestrian, 1 was on a mobility scooter and 1 was on a tractor.
- Twenty-six of the 29 deaths were in open road crashes. Twelve were in single vehicle crashes in which a driver lost control of the vehicle or ran off the road, 9 were in head-on collisions and 5 were in intersection collisions.
- Six of the 29 deaths were in collisions involving a truck.
- Of the 20 vehicle occupants who died, 5 were not restrained at the time of the crash.

## Deaths and Police reported injuries by age, sex and type of road user

Deaths are for the 12 months to the end of February 2018. Reported injuries are for the 12 months to the end of September 2017.

**Note:** Preliminary fatal crash reports are submitted within 24 hours of a crash related death. Full injury crash reports are submitted only after the crash investigations are completed, so there is a lag in the reporting of injury crashes.

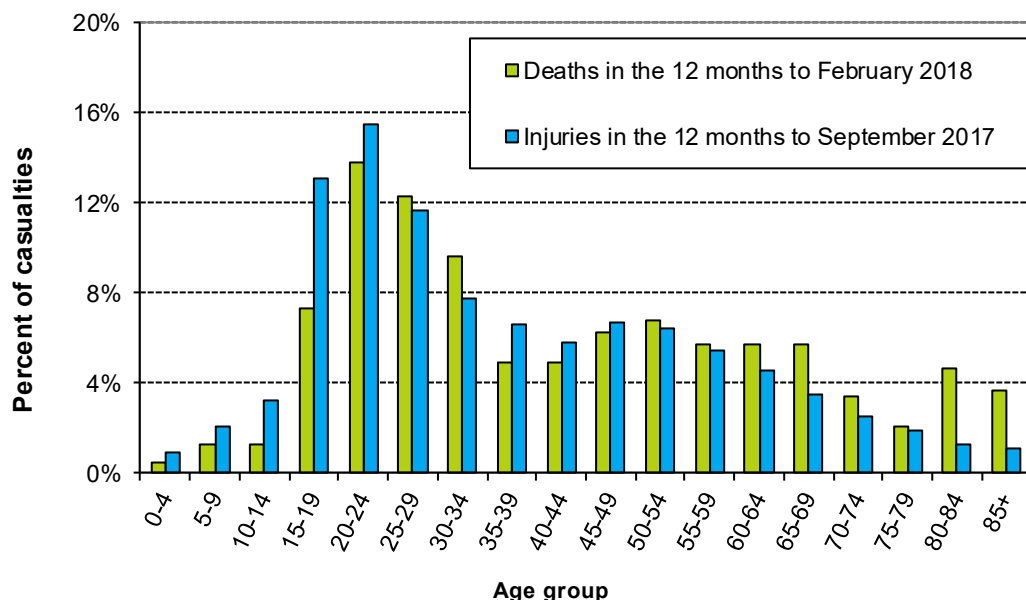
### Road user type by sex

Sex	Drivers		Passengers		Motorcyclists		Pedestrians		Cyclists		Other		Total	
	Killed	Injured	Killed	Injured	Killed	Injured	Killed	Injured	Killed	Injured	Killed	Injured	Killed	Injured
Male	145	4295	45	1354	52	1119	23	492	14	554	1	36	280	7850
Female	49	3388	37	1740	4	206	12	442	2	205	0	17	104	5998
Total	194	7683	82	3094	56	1325	35	934	16	759	1	53	384	13848
%male	75%	56%	55%	44%	93%	84%	66%	53%	88%	73%	100%	68%	73%	57%

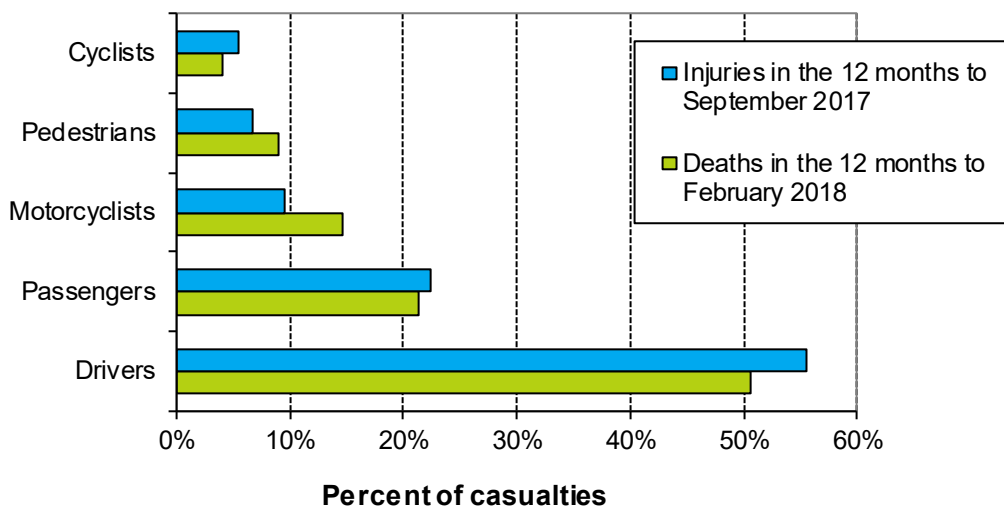
## Road user type by age group

Age group	Drivers		Passengers		Motorcyclists		Pedestrians		Cyclists		Other		Total	
	Killed	Injured	Killed	Injured	Killed	Injured	Killed	Injured	Killed	Injured	Killed	Injured	Killed	Injured
Under-15	2	18	6	506	0	16	2	198	2	84	0	22	12	844
15-24	44	2090	25	1132	8	367	3	173	1	136	0	6	81	3904
25-34	39	1686	22	516	14	237	8	112	1	97	0	0	84	2648
35-44	22	1097	3	207	9	181	4	94	0	116	0	3	38	1698
45-54	24	1046	5	237	13	283	3	67	5	153	0	5	50	1791
55-64	22	822	8	178	9	171	2	102	2	90	1	2	44	1365
65-74	17	506	6	132	3	53	5	78	4	44	0	2	35	815
75+	24	402	7	82	0	9	8	82	1	9	0	13	40	597
Unknown	0	16	0	104	0	8	0	28	0	30	0	0	0	186
<b>Total</b>	<b>194</b>	<b>7683</b>	<b>82</b>	<b>3094</b>	<b>56</b>	<b>1325</b>	<b>35</b>	<b>934</b>	<b>16</b>	<b>759</b>	<b>1</b>	<b>53</b>	<b>384</b>	<b>13848</b>

## Deaths and reported injuries by age group

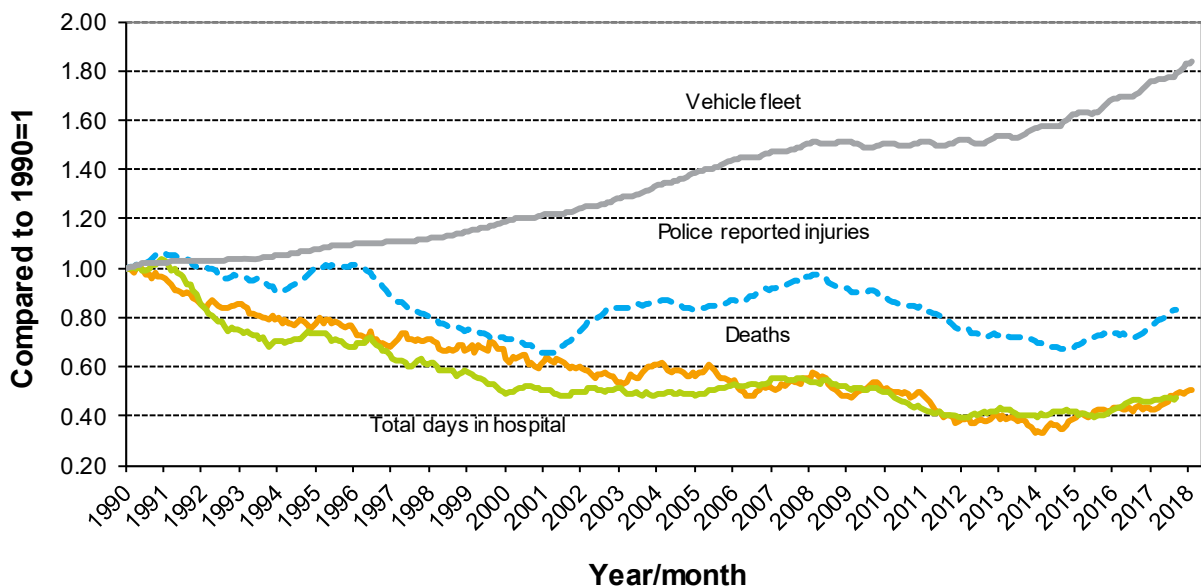


## Types of road users killed and injured



## Trends

### Road crash casualties and vehicle fleet compared to 1990



Since 1990, the number of vehicles on the road has increased by 84 percent while Police reported injuries have dropped by 17 percent, road deaths have dropped by 49 percent and the number of days spent in hospital as a result of road crashes has dropped by 53 percent.

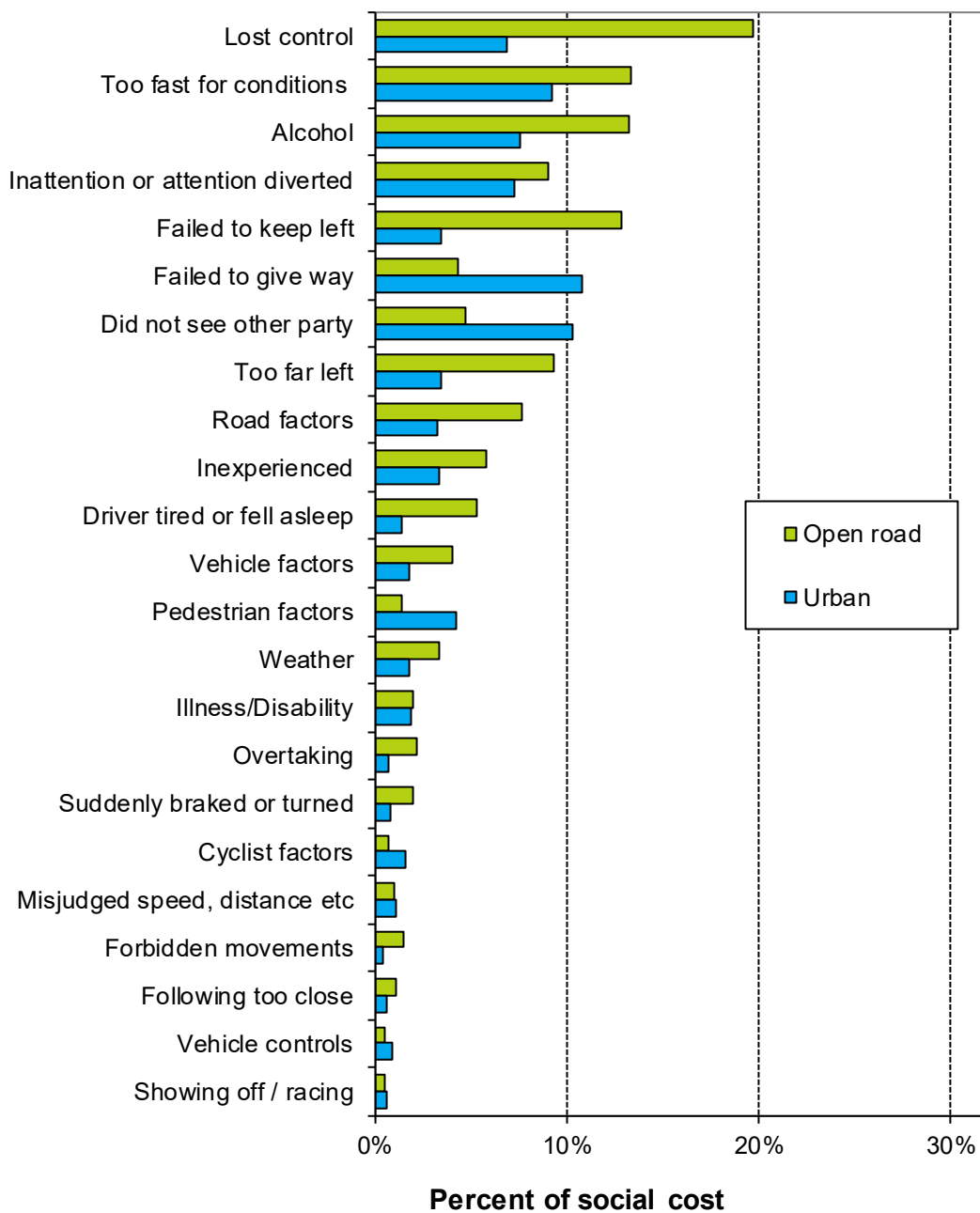
### Crash outcomes and road user behaviour

Road Crash Data	2008	2009	2010	2011	2012	2013	2014	2015	2016	2017	2018
<b>Deaths</b>											
Number of road deaths	366	384	375	284	308	253	293	319	327	379	384
Deaths per 10,000 vehicles	1.1	1.2	1.2	0.88	0.95	0.77	0.86	0.91	0.89	0.99	1.00
Deaths per 100,000 people	8.6	8.9	8.6	6.4	6.9	5.7	6.5	6.9	7.0	7.9	8.0
<b>Injuries</b>											
Reported injuries	15317	14625	14031	12574	12122	11781	11219	12270	12249	13848	
Number hospitalised (all discharges)	7570	7590	7360	6780	7070	7150	6940	7310	8040	8586	
Number hospitalised for over 1 day	3244	3042	2909	2707	2794	2886	2716	2902	3063	3242	
Number hospitalised for over 3 days	2210	2051	1918	1801	1872	1886	1752	1905	1999	2115	
<b>Behavioural Measures</b>											
<b>Speed</b>											
Rural speed, % over 100 km/h	30%	29%	29%	31%	25%	25%	22%	23%	n/a	n/a	
Rural speed, mean (km/h)	96.6	96.3	96.2	96.5	95.6	95.7	95.3	95.7	n/a	n/a	
Rural speed, 85th percentile (km/h)	103	103	103	103	102	102	101	101	n/a	n/a	
<b>Alcohol</b>											
Number of drivers killed with excess alcohol	59	66	68	48	49	38	31	51	50		
Percent of drivers killed with excess alcohol	28%	28%	30%	26%	27%	23%	18%	25%	23%		
<b>Occupant Restraints</b>											
Seat belts worn by adults, front	95%	95%	96%	96%	96%	n/a	97%	n/a	97%	n/a	
Seat belts worn by adults, rear	87%	87%	88%	90%	n/a	n/a	92%	n/a	n/a	n/a	
Child restraints used, 0-4 years	90%	91%	93%	n/a	92%	n/a	93%	n/a	93%	n/a	
<b>Cycle helmets</b>											
Cycle helmets worn, weekday	92%	92%	93%	93%	92%	n/a	n/a	94%	n/a	n/a	

**Note:** Road deaths for 2018 are for the 12 months to the end of February 2018. Reported injuries for 2017 are for the 12 months to the end of September 2017. Hospitalisations for 2017 are for the 12 months to the end of September 2017.

## Factors contributing to crashes – ranked by social cost\*

### Factors contributing to crashes



**Notes:** Crash data for the 12 months to the end of September 2017.

Since there can be several contributing factors for a single crash the figures represented in this graph add to more than 100%.

Alcohol data is not comparable to earlier years due to changes in the crash reporting process.

\* Social cost calculations include loss of life or life quality, loss of output due to injuries, medical and rehabilitation costs, legal and court costs and property damage.