

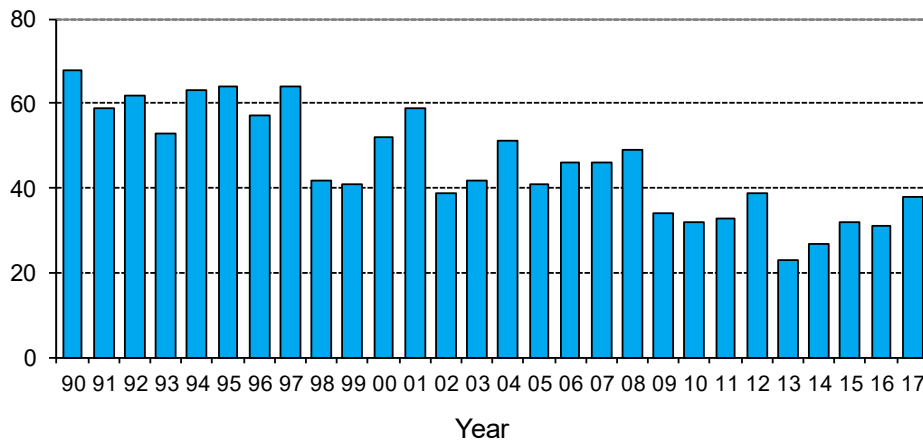
Monthly road crash statistics update

December deaths (2017)

The data presented here are provisional. Crash data as at 10th January 2018.

- Thirty-eight people died on New Zealand roads in December. This is 7 more than December 2016 and is 8 more than the average December road toll for the last five years.

December deaths



- In the 12 months to the end of December 2017, 379 people died on our roads. This is 52 more than the 12 months to the end of December 2016.
- During December, 19 of the deaths were car or van drivers, 8 were car or van passengers, 5 were motorcyclists, 4 were pedestrians, 1 was a truck driver and 1 was a cyclist.
- Twenty-eight of the 38 deaths were in open road crashes. Thirteen were in single vehicle crashes in which a driver lost control of the vehicle or ran off the road, 12 were in head-on collisions, 5 were in intersection collisions, 3 were in overtaking crashes and 5 were in collisions with pedestrians.
- Nine of the 38 deaths were in collisions involving a truck.
- Of the 28 vehicle occupants who died, 11 were not restrained at the time of the crash.

Deaths and Police reported injuries by age, sex and type of road user

Deaths are for the 12 months to the end of December 2017. Reported injuries are for the 12 months to the end of July 2017.

Note: Preliminary fatal crash reports are submitted within 24 hours of a crash related death. Full injury crash reports are submitted only after the crash investigations are completed, so there is a lag in the reporting of injury crashes.

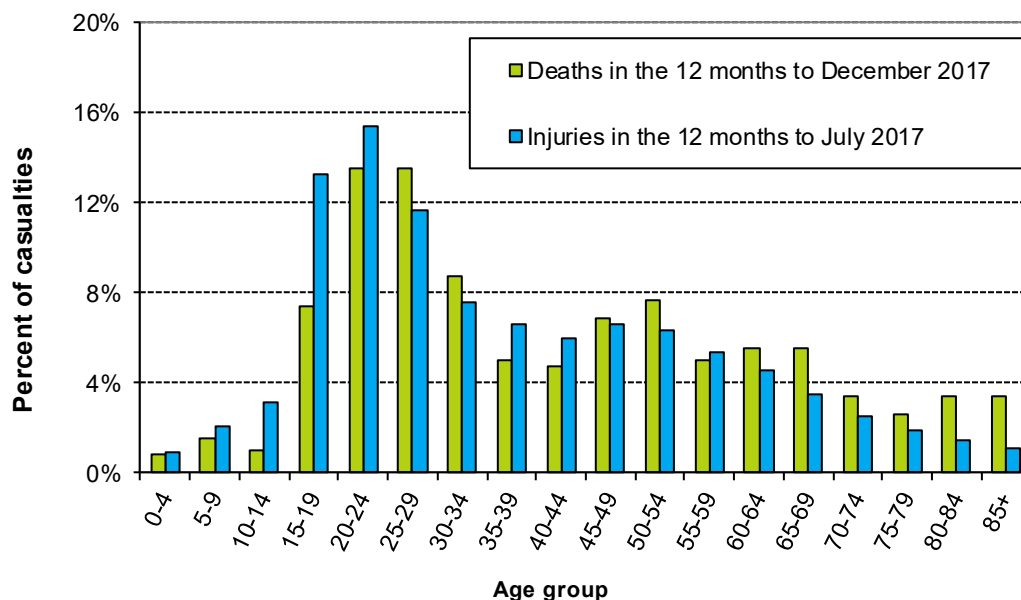
Road user type by sex

Sex	Drivers		Passengers		Motorcyclists		Pedestrians		Cyclists		Other		Total	
	Killed	Injured	Killed	Injured	Killed	Injured	Killed	Injured	Killed	Injured	Killed	Injured	Killed	Injured
Male	148	4232	45	1291	43	1083	27	483	16	536	0	40	279	7665
Female	46	3336	37	1777	2	200	13	415	2	189	0	19	100	5936
Total	194	7568	82	3068	45	1283	40	898	18	725	0	59	379	13601
%male	76%	56%	55%	42%	96%	84%	68%	54%	89%	74%	-	68%	74%	56%

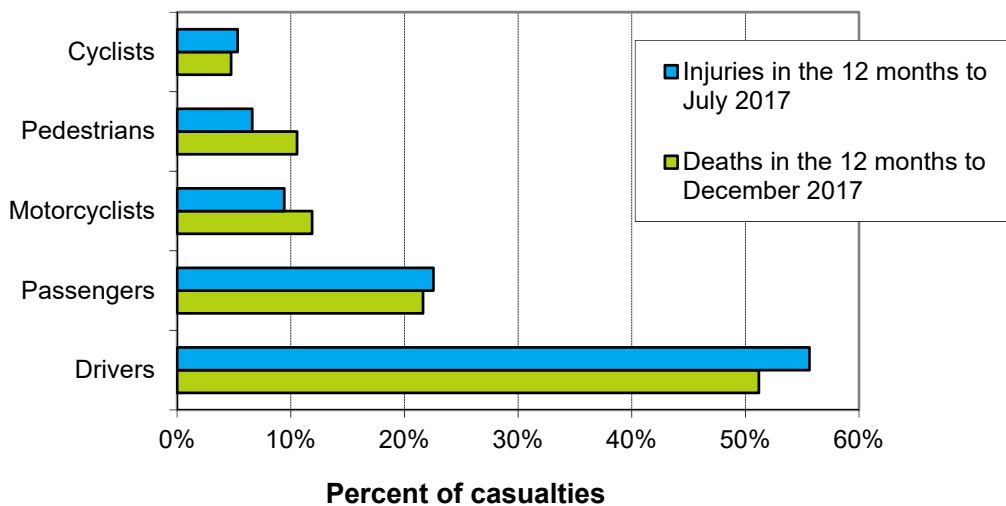
Road user type by age group

Age group	Drivers		Passengers		Motorcyclists		Pedestrians		Cyclists		Other		Total	
	Killed	Injured	Killed	Injured	Killed	Injured	Killed	Injured	Killed	Injured	Killed	Injured	Killed	Injured
Under-15	2	22	7	499	0	16	2	186	2	82	0	25	13	830
15-24	42	2085	26	1128	4	350	6	165	1	120	0	6	79	3854
25-34	40	1636	22	503	12	229	8	114	2	96	0	0	84	2578
35-44	23	1096	3	203	6	176	4	98	1	115	0	3	37	1691
45-54	23	1007	8	236	13	279	6	68	5	142	0	4	55	1736
55-64	23	810	7	173	7	167	1	93	2	90	0	3	40	1336
65-74	18	505	4	132	3	51	5	72	4	45	0	1	34	806
75+	22	392	5	92	0	7	8	78	1	9	0	17	36	595
Unknown	1	15	0	102	0	8	0	24	0	26	0	0	1	175
Total	194	7568	82	3068	45	1283	40	898	18	725	0	59	379	13601

Deaths and reported injuries by age group

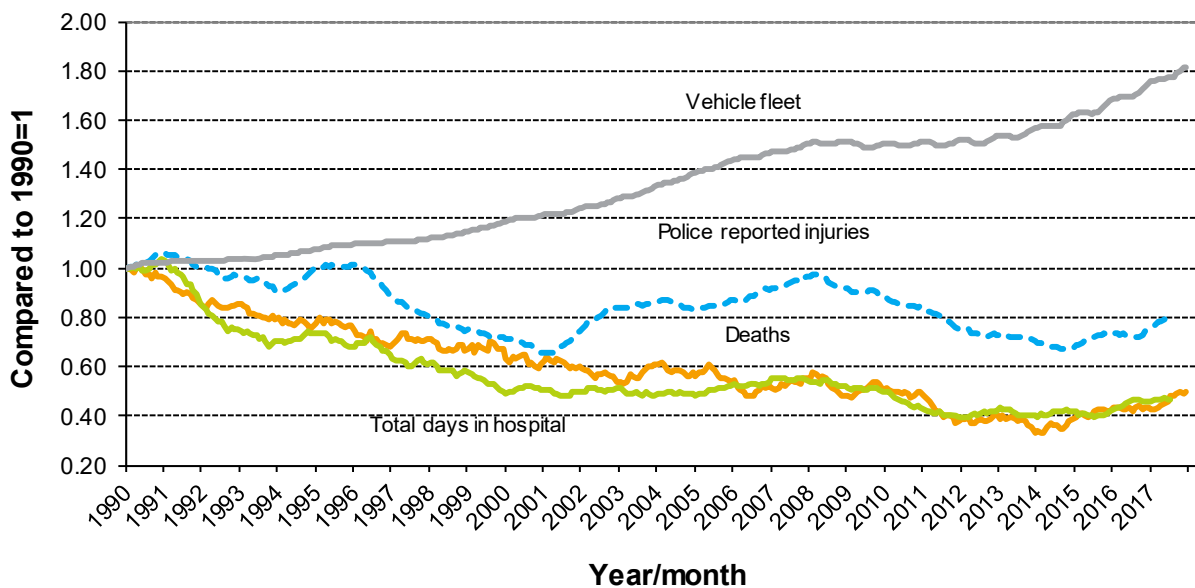


Types of road users killed and injured



Trends

Road crash casualties and vehicle fleet compared to 1990



Since 1990, the number of vehicles on the road has increased by 81 percent while Police reported injuries have dropped by 18 percent, road deaths have dropped by 50 percent and the number of days spent in hospital as a result of road crashes has dropped by 53 percent.

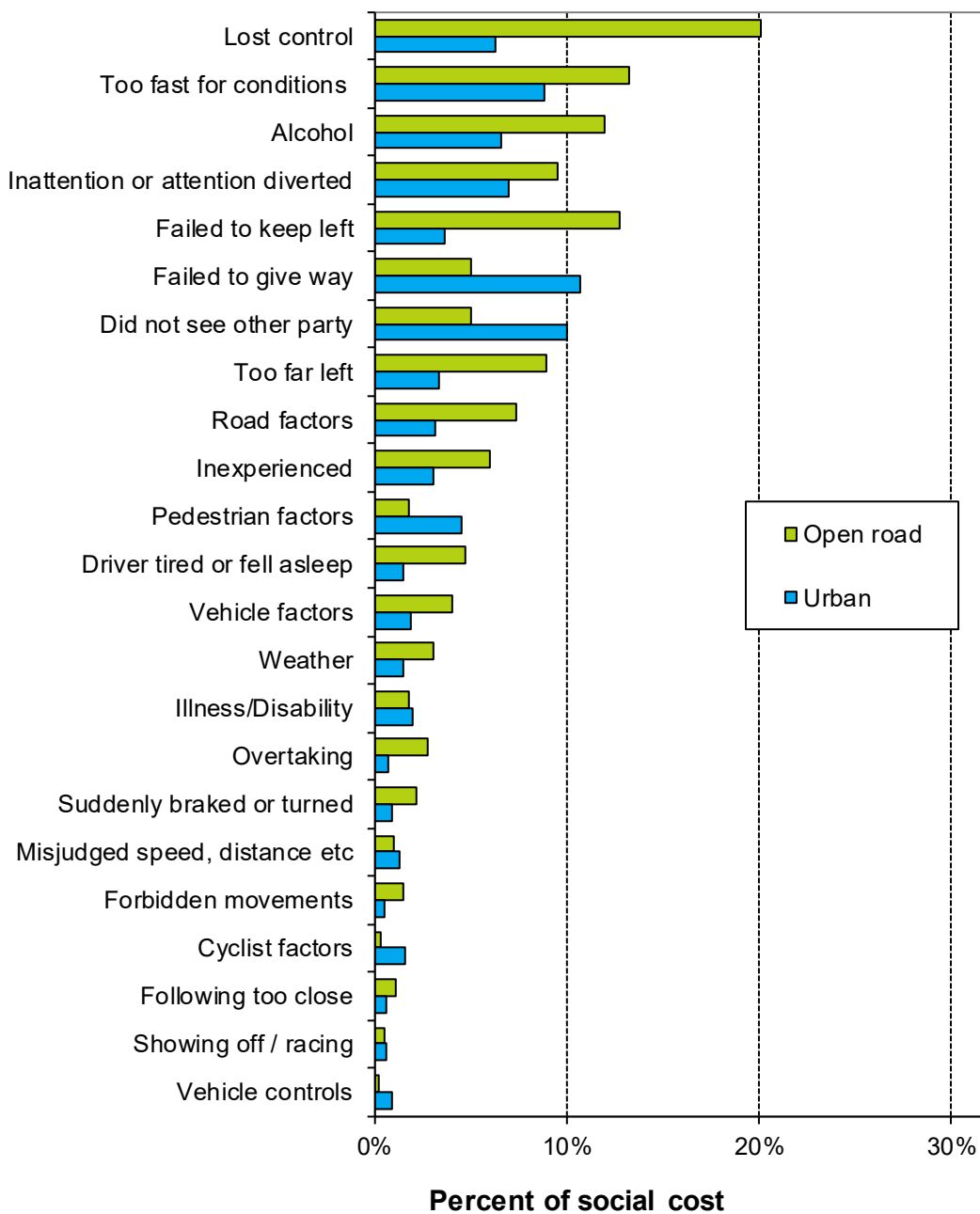
Crash outcomes and road user behaviour

Road Crash Data	2007	2008	2009	2010	2011	2012	2013	2014	2015	2016	2017
Deaths											
Number of road deaths	421	366	384	375	284	308	253	293	319	327	379
Deaths per 10,000 vehicles	1.3	1.1	1.2	1.2	0.88	0.95	0.77	0.86	0.91	0.89	0.99
Deaths per 100,000 people	10.0	8.6	8.9	8.6	6.4	6.9	5.7	6.5	6.9	7.0	7.9
Injuries											
Reported injuries	16013	15317	14625	14031	12574	12122	11781	11219	12270	12247	13601
Number hospitalised (all discharges)	7440	7570	7590	7360	6780	7070	7150	6940	7310	8020	8488
Number hospitalised for over 1 day	3404	3244	3042	2909	2707	2794	2886	2716	2902	3063	3172
Number hospitalised for over 3 days	2351	2210	2051	1918	1801	1872	1886	1752	1905	2000	2090
Behavioural Measures											
Speed											
Rural speed, % over 100 km/h	29%	30%	29%	29%	31%	25%	25%	22%	23%	n/a	
Rural speed, mean (km/h)	96.3	96.6	96.3	96.2	96.5	95.6	95.7	95.3	95.7	n/a	
Rural speed, 85th percentile (km/h)	103	103	103	103	103	102	102	101	101	n/a	
Alcohol											
Number of drivers killed with excess alcohol	65	59	66	68	48	49	38	31	51	50	
Percent of drivers killed with excess alcohol	27%	28%	28%	30%	26%	27%	23%	18%	25%	23%	
Occupant Restraints											
Seat belts worn by adults, front	95%	95%	95%	96%	96%	96%	n/a	97%	n/a	97%	
Seat belts worn by adults, rear	87%	87%	87%	88%	90%	n/a	n/a	92%	n/a	n/a	
Child restraints used, 0-4 years	91%	90%	91%	93%	n/a	92%	n/a	93%	n/a	93%	
Cycle helmets											
Cycle helmets worn, weekday	92%	92%	92%	93%	93%	92%	n/a	n/a	94%	n/a	

Note: Road deaths for 2017 are for the 12 months to the end of December 2017. Reported injuries for 2017 are for the 12 months to the end of July 2017. Hospitalisations for 2017 are for the 12 months to the end of July 2017.

Factors contributing to crashes – ranked by social cost*

Factors contributing to crashes



Notes: Crash data for the 12 months to the end of July 2017.

Since there can be several contributing factors for a single crash the figures represented in this graph add to more than 100%.

Alcohol data is not comparable to earlier years due to changes in the crash reporting process.

* Social cost calculations include loss of life or life quality, loss of output due to injuries, medical and rehabilitation costs, legal and court costs and property damage.