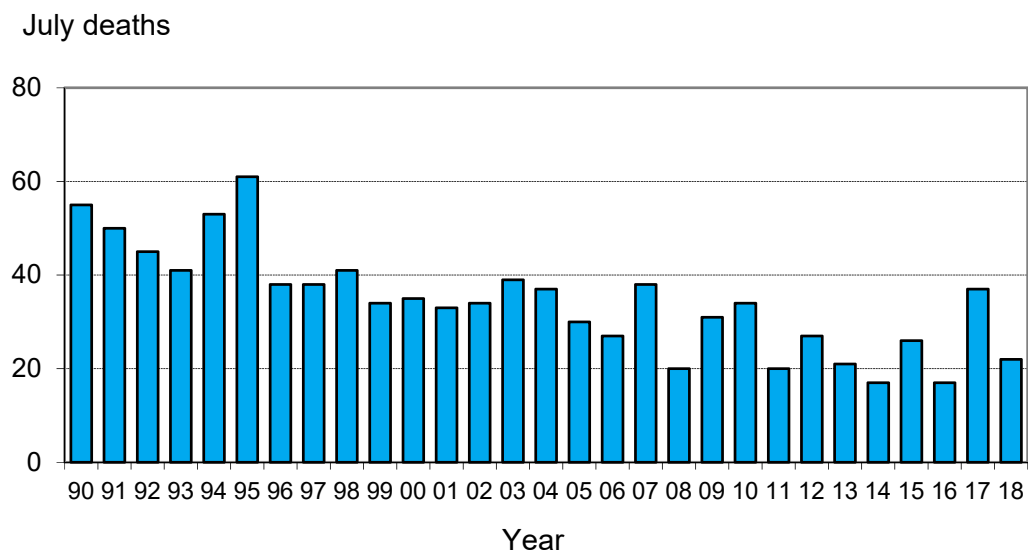


Monthly road crash statistics update

July Road Deaths (2018)

The data presented here are provisional. Crash data as at 10th August 2018.

- Twenty-two people died on New Zealand roads in July. This is fifteen fewer than the number which died in July 2017 and is two more than the average number of July road deaths over the past five years.



- To the end of July this year, 223 people have died on New Zealand roads. This is same number as at the same time last year.
- In the 12 months to the end of July 2018, 378 people died on our roads. This is fifteen more than the 12 months to the end of July 2017.
- During July: nine of the deaths were car or van drivers plus six passengers, one was a bus passenger, two were motorcyclists, one was a cyclist, and three were pedestrians.
- Thirteen of the twenty-two deaths were in open road crashes. Eight were in single vehicle crashes in which a driver lost control of the vehicle or ran off the road and three were pedestrian deaths.
- Four of the twenty-two deaths were in collisions involved a truck.
- Of the sixteen vehicle occupants who died, one was not restrained at the time of the crash.

Deaths and Police reported injuries by age, sex and type of road user

Deaths are for the 12 months to the end of July 2018. Reported injuries are for the 12 months to the end of February 2018.

Note: Preliminary fatal crash reports are submitted within 24 hours of a crash related death. Full injury crash reports are submitted only after the crash investigations are completed, so there is a lag in the reporting of injury crashes.

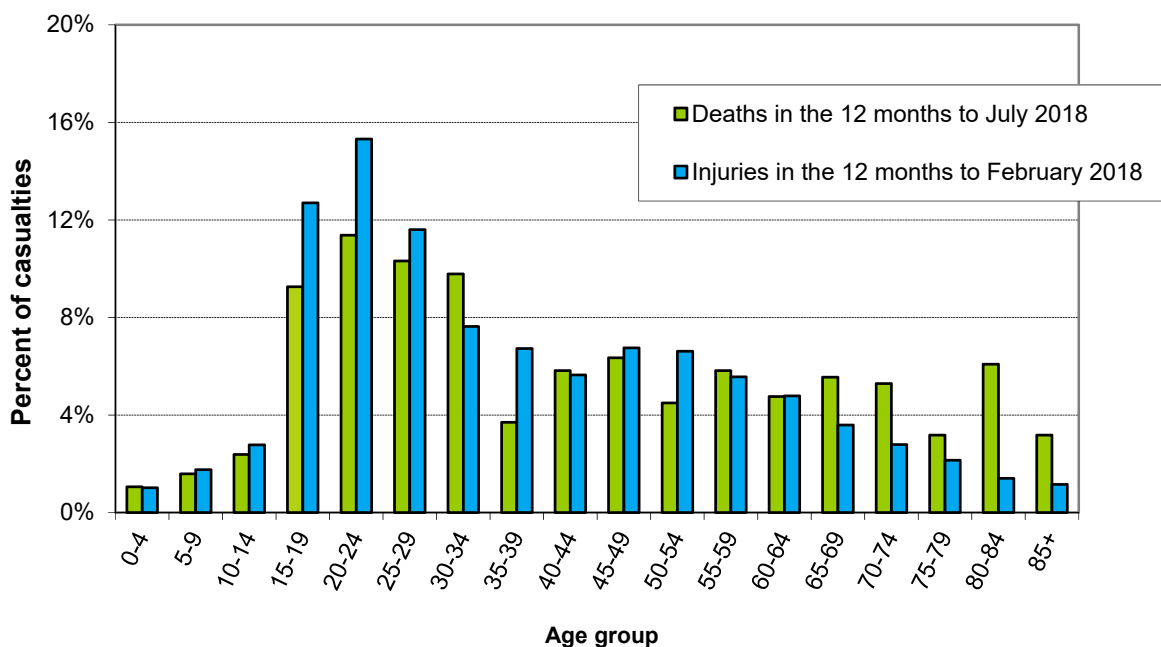
Road user type by sex

Sex	Drivers		Passengers		Motorcyclists		Pedestrians		Cyclists		Other		Total	
	Killed	Injured	Killed	Injured	Killed	Injured	Killed	Injured	Killed	Injured	Killed	Injured	Killed	Injured
Male	130	4406	42	1310	49	1112	19	523	11	595	1	35	252	7981
Female	54	3396	48	1746	6	221	16	456	2	192	0	11	126	6022
Total	184	7802	90	3056	55	1333	35	979	13	787	1	46	378	14003
%male	71%	56%	47%	43%	89%	83%	54%	53%	85%	76%	100%	76%	67%	57%

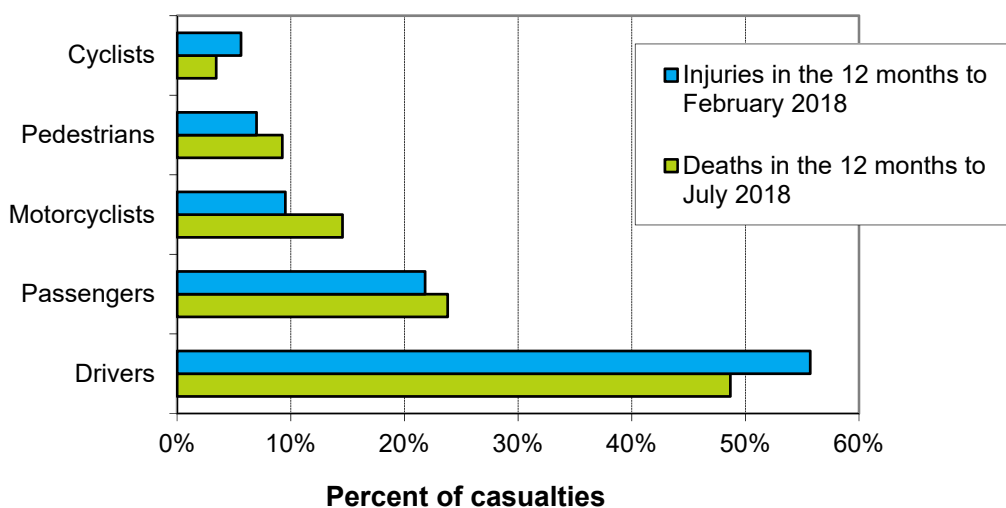
Road user type by age group

Age group	Drivers		Passengers		Motorcyclists		Pedestrians		Cyclists		Other		Total	
	Killed	Injured	Killed	Injured	Killed	Injured	Killed	Injured	Killed	Injured	Killed	Injured	Killed	Injured
Under-15	1	10	14	413	0	14	1	220	3	88	0	23	19	768
15-24	42	2079	21	1121	10	348	4	181	1	138	0	5	78	3872
25-34	39	1685	21	510	11	257	5	111	0	95	0	0	76	2658
35-44	23	1106	3	238	6	166	3	83	1	115	0	2	36	1710
45-54	18	1081	4	241	14	285	1	74	4	163	0	3	41	1847
55-64	16	858	9	190	10	185	3	103	1	90	1	4	40	1430
65-74	20	549	6	138	4	59	9	82	2	52	0	2	41	882
75+	25	412	12	110	0	9	9	97	1	16	0	7	47	651
Unknown	0	22	0	95	0	10	0	28	0	30	0	0	0	185
Total	184	7802	90	3056	55	1333	35	979	13	787	1	46	378	14003

Deaths and reported injuries by age group

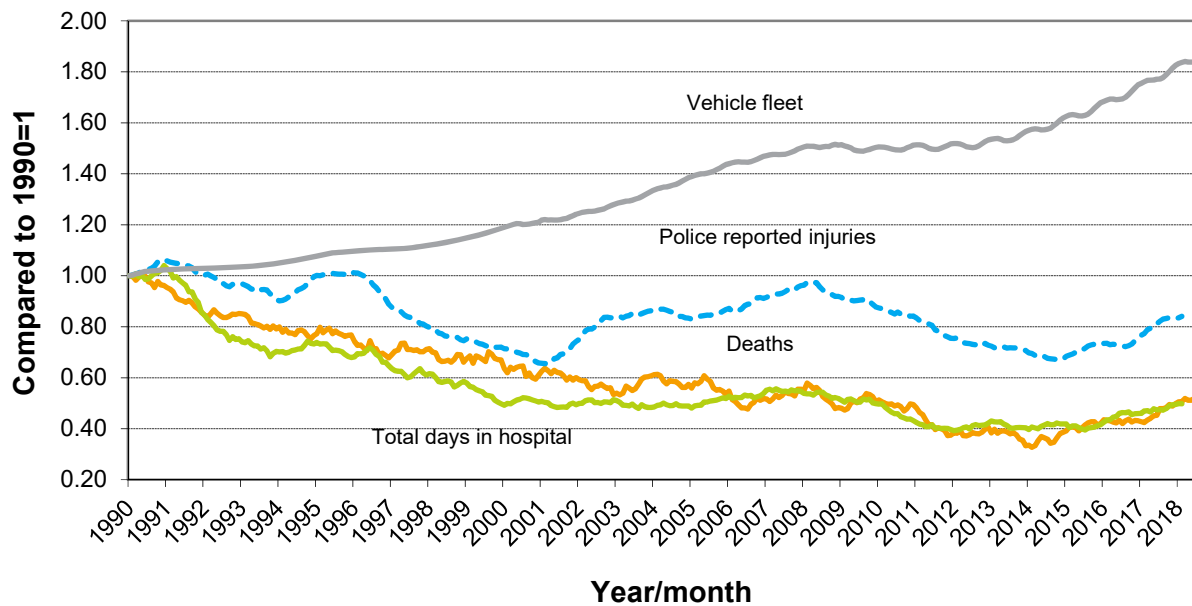


Types of road users killed and injured



Trends

Road crash casualties and vehicle fleet compared to 1990



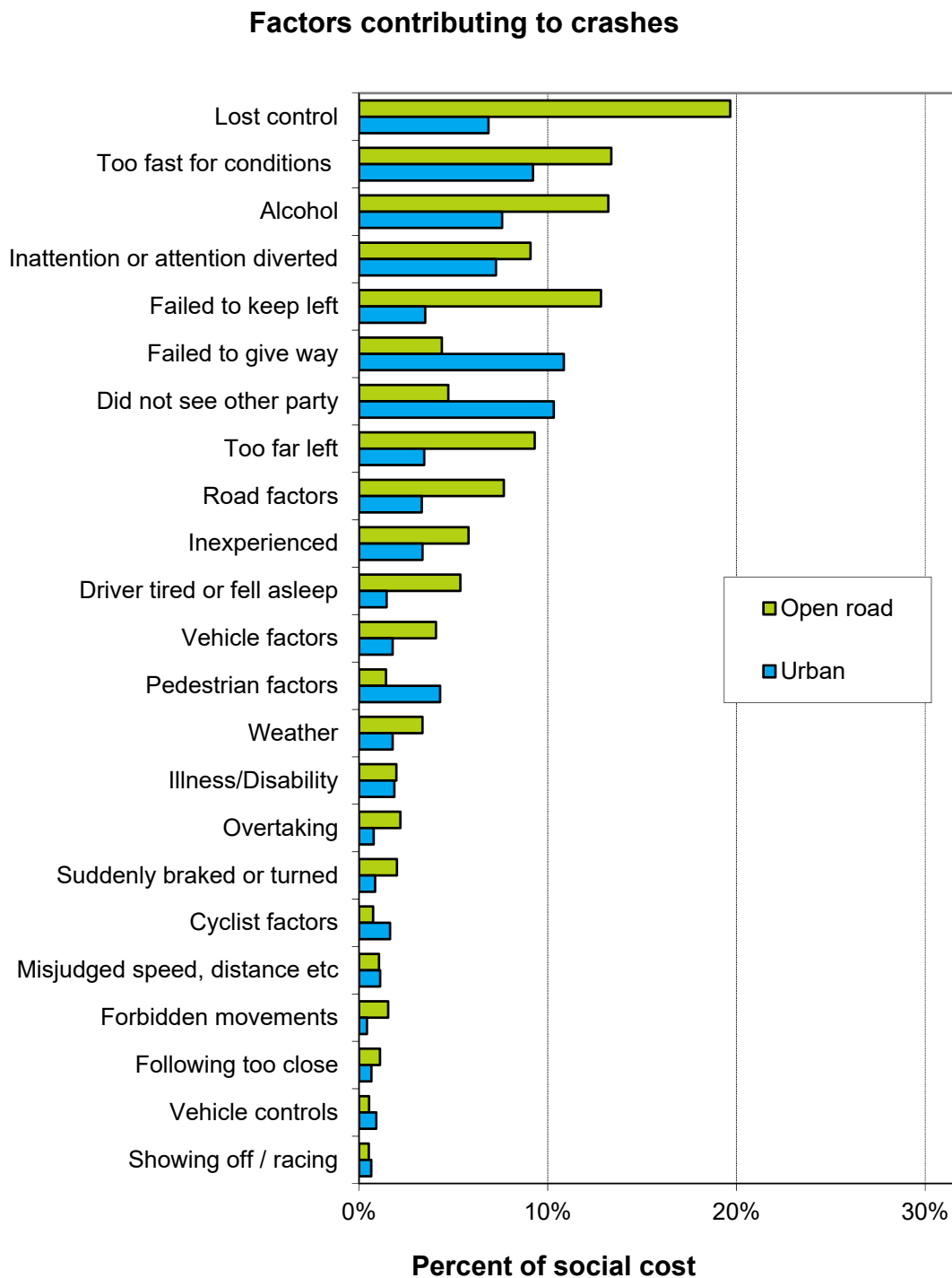
Since 1990, the number of vehicles on the road has increased by 84 percent while Police reported injuries have dropped by 16 percent, road deaths have dropped by 50 percent and the number of days spent in hospital as a result of road crashes has dropped by 50 percent.

Crash outcomes and road user behaviour

Road Crash Data	2008	2009	2010	2011	2012	2013	2014	2015	2016	2017	2018
Deaths											
Number of road deaths	366	384	375	284	308	253	293	319	327	378	378
Deaths per 10,000 vehicles	1.1	1.2	1.2	0.88	0.95	0.77	0.86	0.91	0.89	0.99	0.99
Deaths per 100,000 people	8.6	8.9	8.6	6.4	6.9	5.7	6.5	6.9	7.0	7.9	7.9
Injuries											
Reported injuries	15317	14625	14031	12574	12122	11781	11219	12270	12600	13867	14003
Number hospitalised (all discharges)	7570	7590	7360	6780	7070	7150	6940	7310	8040	8740	8875
Number hospitalised for over 1 day	3244	3042	2909	2707	2794	2886	2716	2902	3065	3387	3023
Number hospitalised for over 3 days	2210	2051	1918	1801	1872	1886	1752	1905	2001	2221	1903
Behavioural Measures											
Speed											
Rural speed, % over 100 km/h	30%	29%	29%	31%	25%	25%	22%	23%	n/a	n/a	n/a
Rural speed, mean (km/h)	96.6	96.3	96.2	96.5	95.6	95.7	95.3	95.7	n/a	n/a	n/a
Rural speed, 85th percentile (km/h)	103	103	103	103	102	102	101	101	n/a	n/a	n/a
Alcohol											
Number of drivers killed with excess alcohol	59	66	68	48	49	38	31	51	50	n/a	n/a
Percent of drivers killed with excess alcohol	28%	28%	30%	26%	27%	23%	18%	25%	23%	n/a	n/a
Occupant Restraints											

Note: Road deaths for 2018 are for the 12 months to the end of July 2018. Reported injuries and Hospitalisations are for the 12 months to the end of February 2018.

Factors contributing to crashes – ranked by social cost*



Notes: Crash data for the 12 months to the end of February 2018.

Since there can be several contributing factors for a single crash the figures represented in this graph add to more than 100%.

Alcohol data is not comparable to earlier years due to changes in the crash reporting process.

* Social cost calculations include loss of life or life quality, loss of output due to injuries, medical and rehabilitation costs, legal and court costs and property damage.