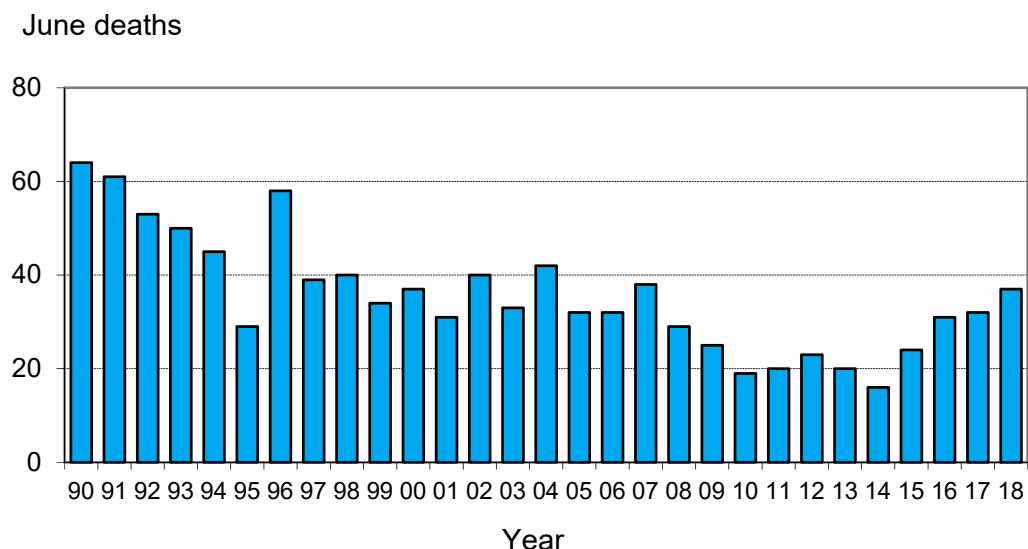


Monthly road crash statistics update

June Road Deaths (2018)

The data presented here are provisional. Crash data as at 10th August 2018.

- Thirty-seven people died on New Zealand roads in June. This is five more than the number which died in June 2017 and is twelve more than the average number of June road deaths over the past five years.



- To the end of June this year, 201 people have died on New Zealand roads. This is fifteen more than at the same time last year.
- In the 12 months to the end of June 2018, 393 people died on our roads. This is fifty more than the 12 months to the end of June 2017.
- During June: fourteen of the deaths were car or van drivers plus thirteen passengers, one was SUV driver, one was a motorcyclist, two truck drivers, one tractor, and five were pedestrians.
- Twenty-two of the thirty-seven deaths were in open road crashes. Nine were in single vehicle crashes in which a driver lost control of the vehicle or ran off the road, eighteen were in head-on collisions and four were in intersection collisions.
- Twelve of the thirty-seven deaths were in collisions involved a truck.
- Of the thirty-one vehicle occupants who died, one was not restrained at the time of the crash.

Deaths and Police reported injuries by age, sex and type of road user

Deaths are for the 12 months to the end of June 2018. Reported injuries are for the 12 months to the end of January 2018.

Note: Preliminary fatal crash reports are submitted within 24 hours of a crash related death. Full injury crash reports are submitted only after the crash investigations are completed, so there is a lag in the reporting of injury crashes.

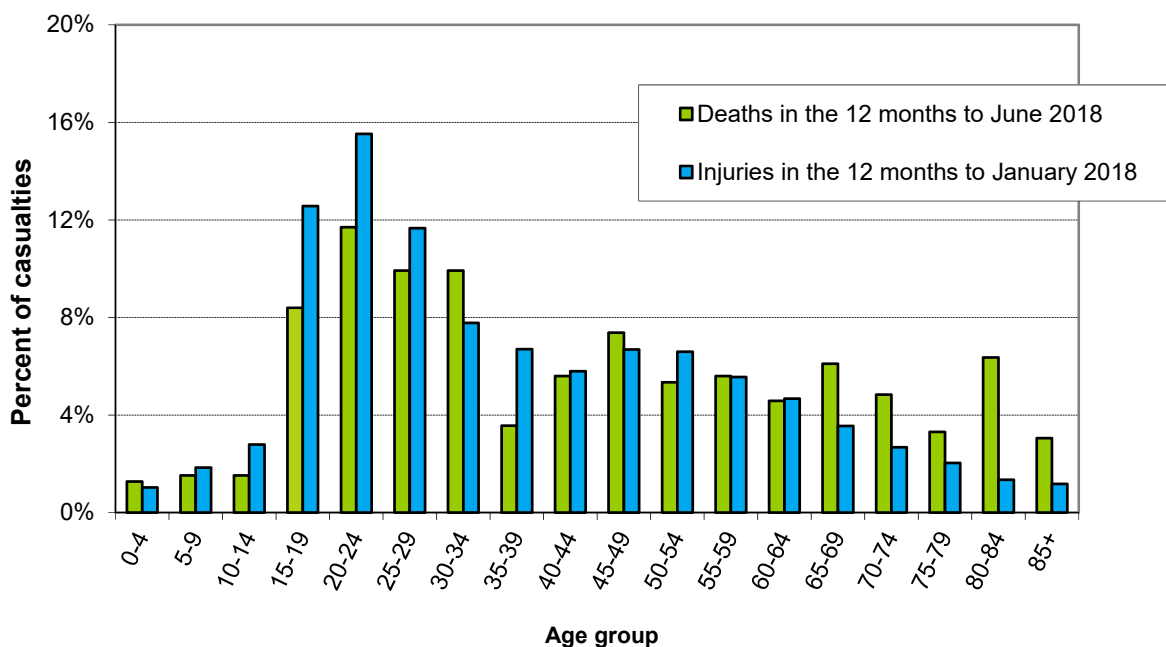
Road user type by sex

Sex	Drivers		Passengers		Motorcyclists		Pedestrians		Cyclists		Other		Total	
	Killed	Injured	Killed	Injured	Killed	Injured	Killed	Injured	Killed	Injured	Killed	Injured	Killed	Injured
Male	140	4365	46	1328	52	1121	19	510	12	586	1	32	270	7942
Female	56	3379	43	1731	6	210	16	448	2	194	0	10	123	5972
Total	196	7744	89	3059	58	1331	35	958	14	780	1	42	393	13914
%male	71%	56%	52%	43%	90%	84%	54%	53%	86%	75%	100%	76%	69%	57%

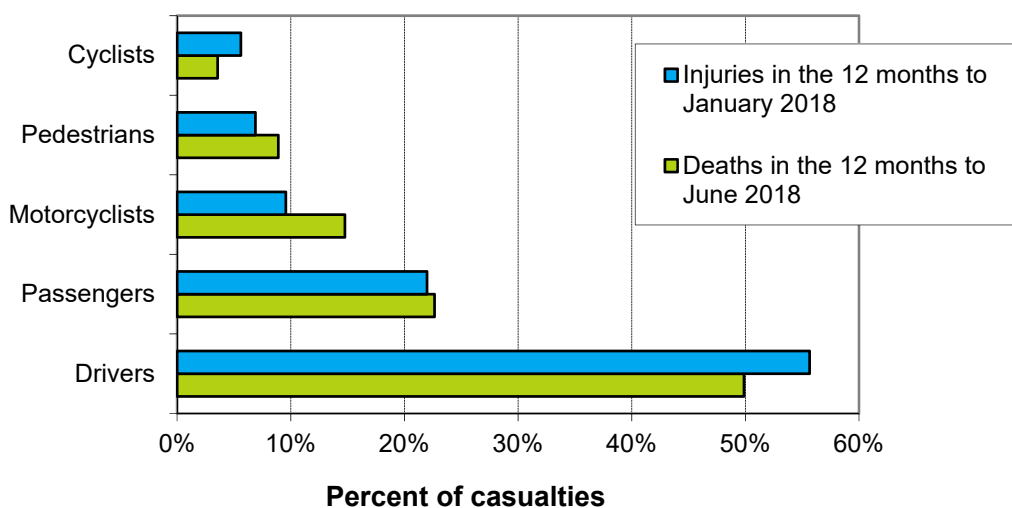
Road user type by age group

Age group	Drivers		Passengers		Motorcyclists		Pedestrians		Cyclists		Other		Total	
	Killed	Injured	Killed	Injured	Killed	Injured	Killed	Injured	Killed	Injured	Killed	Injured	Killed	Injured
Under-15	1	10	13	427	0	15	1	214	2	90	0	22	17	778
15-24	42	2060	22	1132	10	355	3	172	2	133	0	4	79	3856
25-34	41	1700	20	506	13	252	4	114	0	96	0	0	78	2668
35-44	22	1107	3	239	7	166	3	86	1	115	0	2	36	1715
45-54	22	1063	5	244	16	281	3	71	4	161	0	3	50	1823
55-64	19	845	8	184	8	181	3	103	1	88	1	3	40	1404
65-74	21	530	6	129	4	64	9	78	3	52	0	2	43	855
75+	28	405	12	98	0	7	9	94	1	15	0	6	50	625
Unknown	0	24	0	100	0	10	0	26	0	30	0	0	0	190
Total	196	7744	89	3059	58	1331	35	958	14	780	1	42	393	13914

Deaths and reported injuries by age group

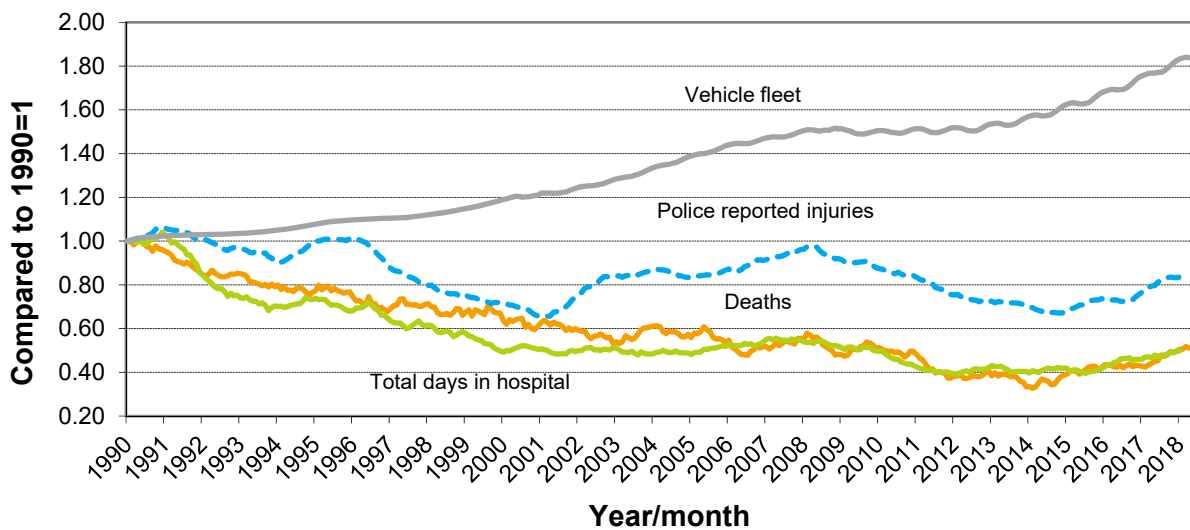


Types of road users killed and injured



Trends

Road crash casualties and vehicle fleet compared to 1990



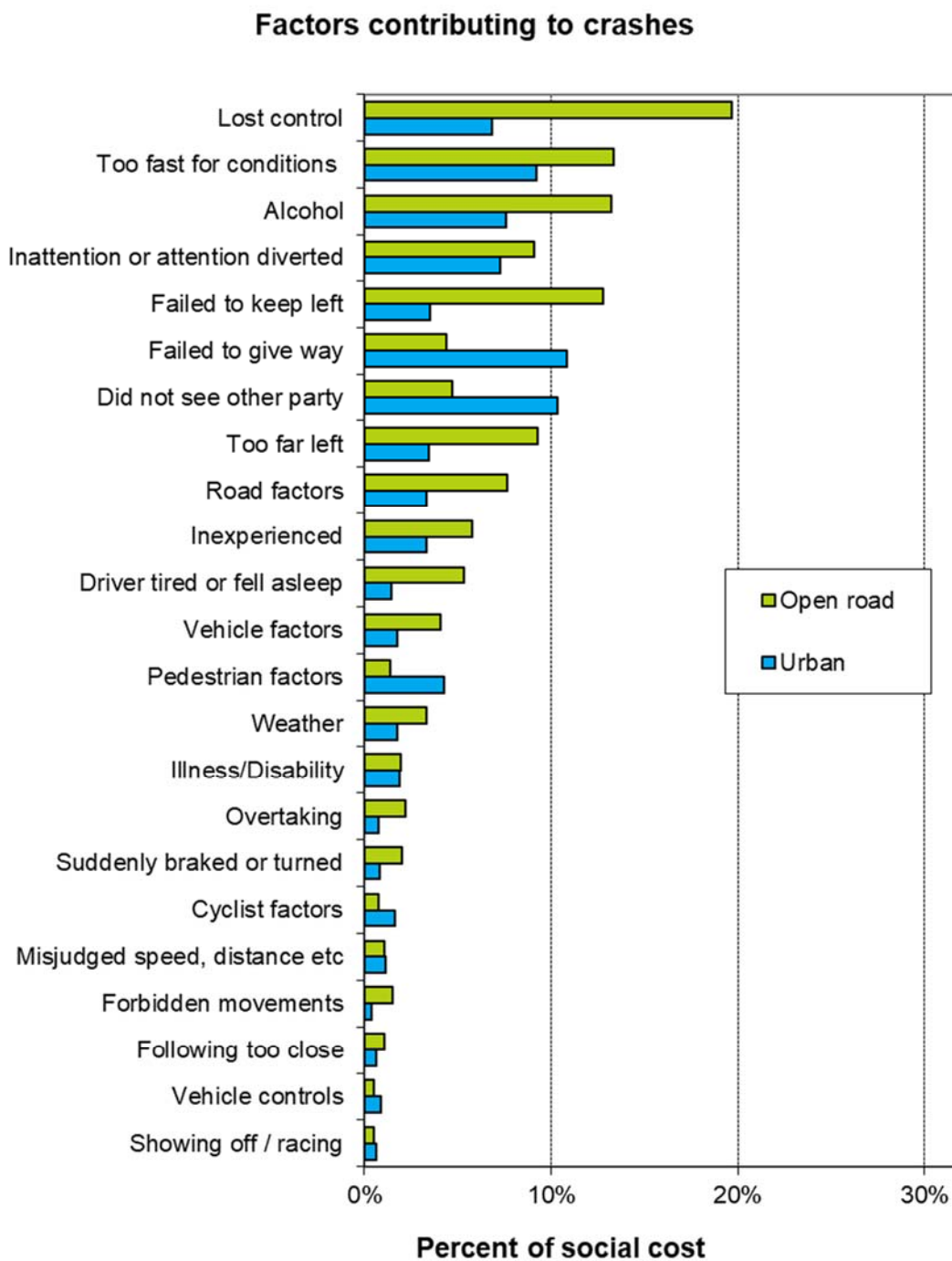
Since 1990, the number of vehicles on the road has increased by 84 percent while Police reported injuries have dropped by 16 percent, road deaths have dropped by 48 percent and the number of days spent in hospital as a result of road crashes has dropped by 50 percent.

Crash outcomes and road user behaviour

Road Crash Data	2008	2009	2010	2011	2012	2013	2014	2015	2016	2017	2018
Deaths											
Number of road deaths	366	384	375	284	308	253	293	319	327	378	393
Deaths per 10,000 vehicles	1.1	1.2	1.2	0.88	0.95	0.77	0.86	0.91	0.89	0.99	1.03
Deaths per 100,000 people	8.6	8.9	8.6	6.4	6.9	5.7	6.5	6.9	7.0	7.9	8.2
Injuries											
Reported injuries	15317	14625	14031	12574	12122	11781	11219	12270	12600	13867	13914
Number hospitalised (all discharges)	7570	7590	7360	6780	7070	7150	6940	7310	8040	8740	8824
Number hospitalised for over 1 day	3244	3042	2909	2707	2794	2886	2716	2902	3065	3387	3063
Number hospitalised for over 3 days	2210	2051	1918	1801	1872	1886	1752	1905	2001	2221	1998
Behavioural Measures											
Speed											
Rural speed, % over 100 km/h	30%	29%	29%	31%	25%	25%	22%	23%	n/a	n/a	n/a
Rural speed, mean (km/h)	96.6	96.3	96.2	96.5	95.6	95.7	95.3	95.7	n/a	n/a	n/a
Rural speed, 85th percentile (km/h)	103	103	103	103	102	102	101	101	n/a	n/a	n/a
Alcohol											
Number of drivers killed with excess alcohol	59	66	68	48	49	38	31	51	50	n/a	n/a
Percent of drivers killed with excess alcohol	28%	28%	30%	26%	27%	23%	18%	25%	23%	n/a	n/a
Occupant Restraints											
Seat belts worn by adults, front	95%	95%	96%	96%	96%	n/a	97%	n/a	97%	n/a	n/a
Seat belts worn by adults, rear	87%	87%	88%	90%	n/a	n/a	92%	n/a	n/a	n/a	n/a
Child restraints used, 0-4 years	90%	91%	93%	n/a	92%	n/a	93%	n/a	93%	n/a	n/a
Cycle helmets											
Cycle helmets worn, weekday	92%	92%	93%	93%	92%	n/a	n/a	94%	n/a	n/a	n/a

Note: Road deaths for 2018 are for the 12 months to the end of June 2018. Reported injuries and Hospitalisations are for the 12 months to the end of January 2018.

Factors contributing to crashes – ranked by social cost*



Notes: Crash data for the 12 months to the end of January 2018.

Since there can be several contributing factors for a single crash the figures represented in this graph add to more than 100%.

Alcohol data is not comparable to earlier years due to changes in the crash reporting process.

* Social cost calculations include loss of life or life quality, loss of output due to injuries, medical and rehabilitation costs, legal and court costs and property damage.