

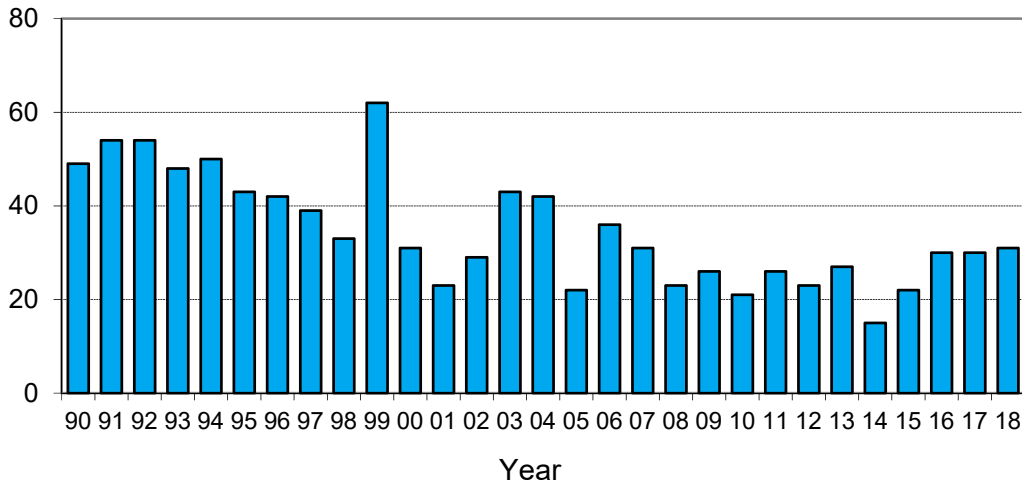
Monthly road crash statistics update

August Road Deaths (2018)

The data presented here are provisional. Crash data as at 21st September 2018.

- Thirty-one people died on New Zealand roads in August.
- This is one more than the number which died in August 2017 and is six more than the average number of August road deaths over the past five years.

August deaths



- To the end of August this year, 254 people have died on New Zealand roads. This is one more death than as at the same time last year.
- In the 12 months to the end of August 2018, 379 people died on our roads. This is sixteen more than the 12 months to the end of August 2017.
- During August: fifteen of the deaths were car or van drivers plus eight passengers, three were motorcyclists, one was a cyclist, and four were pedestrians.
- Seventeen of the thirty-one deaths were in open road crashes. Eight were in single vehicle crashes in which a driver lost control of the vehicle or ran off the road, ten were in head-on crashes and two were in intersection crashes.
- Three of the thirty-one deaths were in collisions involving a truck.
- Of the twenty-three vehicle occupants who died, six were not restrained at the time of the crash.

Deaths and Police reported injuries by age, sex and type of road user

Deaths are for the 12 months to the end of August 2018. Reported injuries are for the 12 months to the end of March 2018.

Note: Preliminary fatal crash reports are submitted within 24 hours of a crash related death. Full injury crash reports are submitted only after the crash investigations are completed, so there is a lag in the reporting of injury crashes.

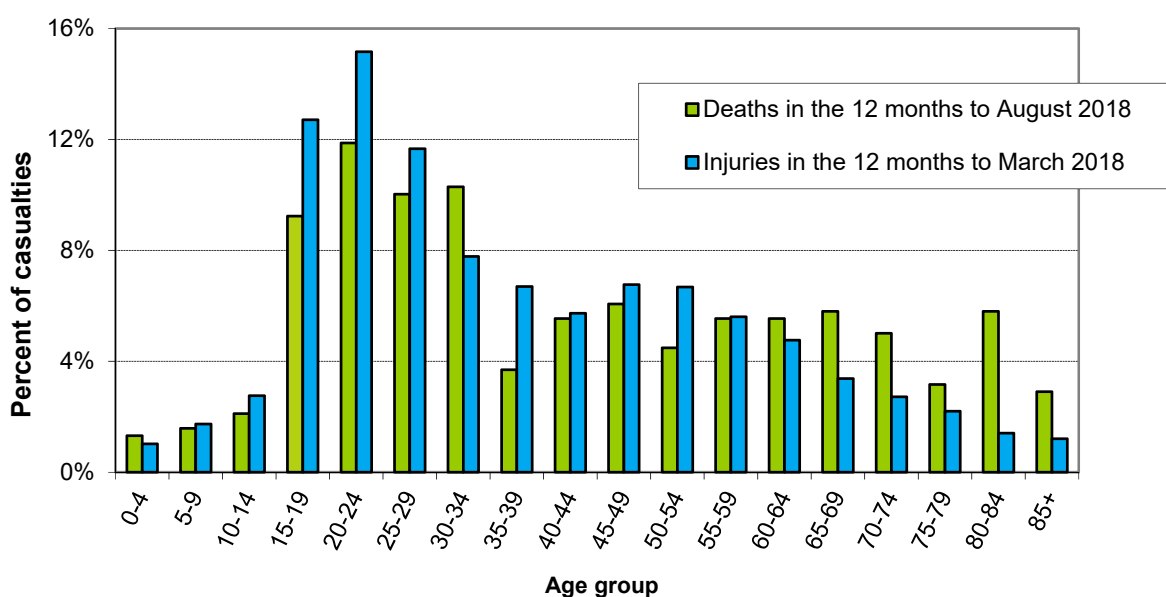
Road user type by sex

Sex	Drivers		Passengers		Motorcyclists		Pedestrians		Cyclists		Other		Total	
	Killed	Injured	Killed	Injured	Killed	Injured	Killed	Injured	Killed	Injured	Killed	Injured	Killed	Injured
Male	122	4391	44	1317	49	1138	22	538	9	587	1	33	247	8004
Female	57	3428	49	1722	6	226	17	457	3	193	0	8	132	6034
Total	179	7819	93	3039	55	1364	39	995	12	780	1	41	379	14038
%male	68%	56%	47%	43%	89%	83%	56%	54%	75%	75%	100%	80%	65%	57%

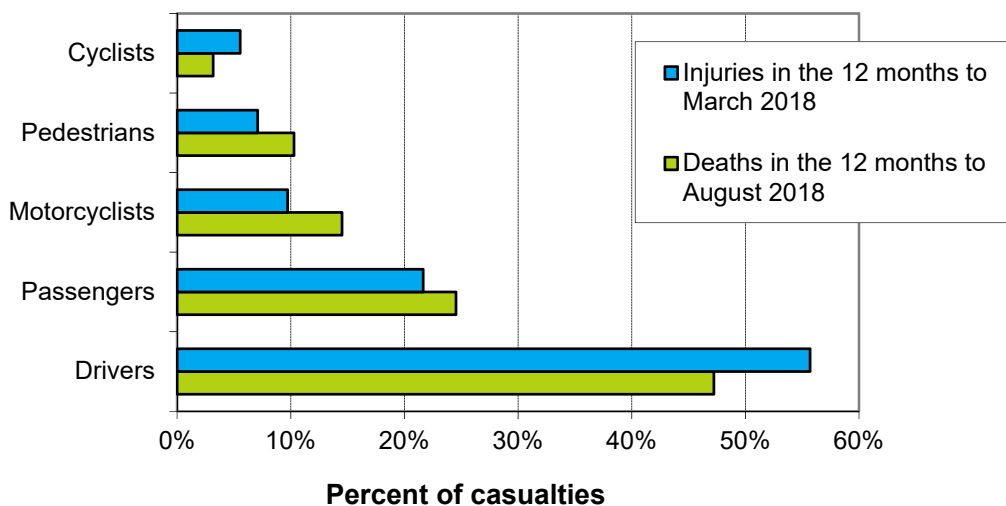
Road user type by age group

Age group	Drivers		Passengers		Motorcyclists		Pedestrians		Cyclists		Other		Total	
	Killed	Injured	Killed	Injured	Killed	Injured	Killed	Injured	Killed	Injured	Killed	Injured	Killed	Injured
Under-15	0	9	15	415	0	13	1	220	3	87	0	21	19	765
15-24	40	2068	24	1110	11	359	4	191	1	130	0	4	80	3862
25-34	38	1676	22	525	11	275	6	110	0	107	0	1	77	2694
35-44	21	1129	2	238	7	170	3	81	2	102	0	2	35	1722
45-54	18	1091	4	244	13	288	3	74	2	163	0	2	40	1862
55-64	20	868	8	181	9	184	3	108	1	93	1	3	42	1437
65-74	19	535	7	124	4	54	9	81	2	50	0	1	41	845
75+	23	419	11	111	0	10	10	101	1	19	0	7	45	667
Unknown	0	24	0	91	0	11	0	29	0	29	0	0	0	184
Total	179	7819	93	3039	55	1364	39	995	12	780	1	41	379	14038

Deaths and reported injuries by age group

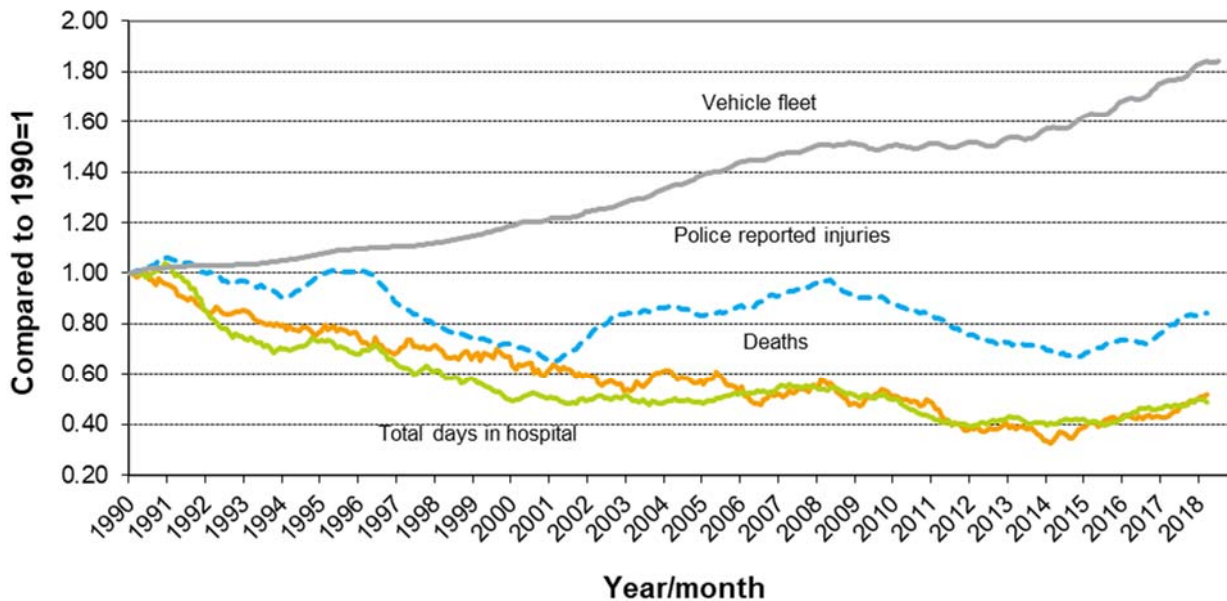


Types of road users killed and injured



Trends

Road crash casualties and vehicle fleet compared to 1990



Since 1990, the number of vehicles on the road has increased by 84 percent while Police reported injuries have dropped by 16 percent, road deaths have dropped by 50 percent and the number of days spent in hospital as a result of road crashes has dropped by 50 percent.

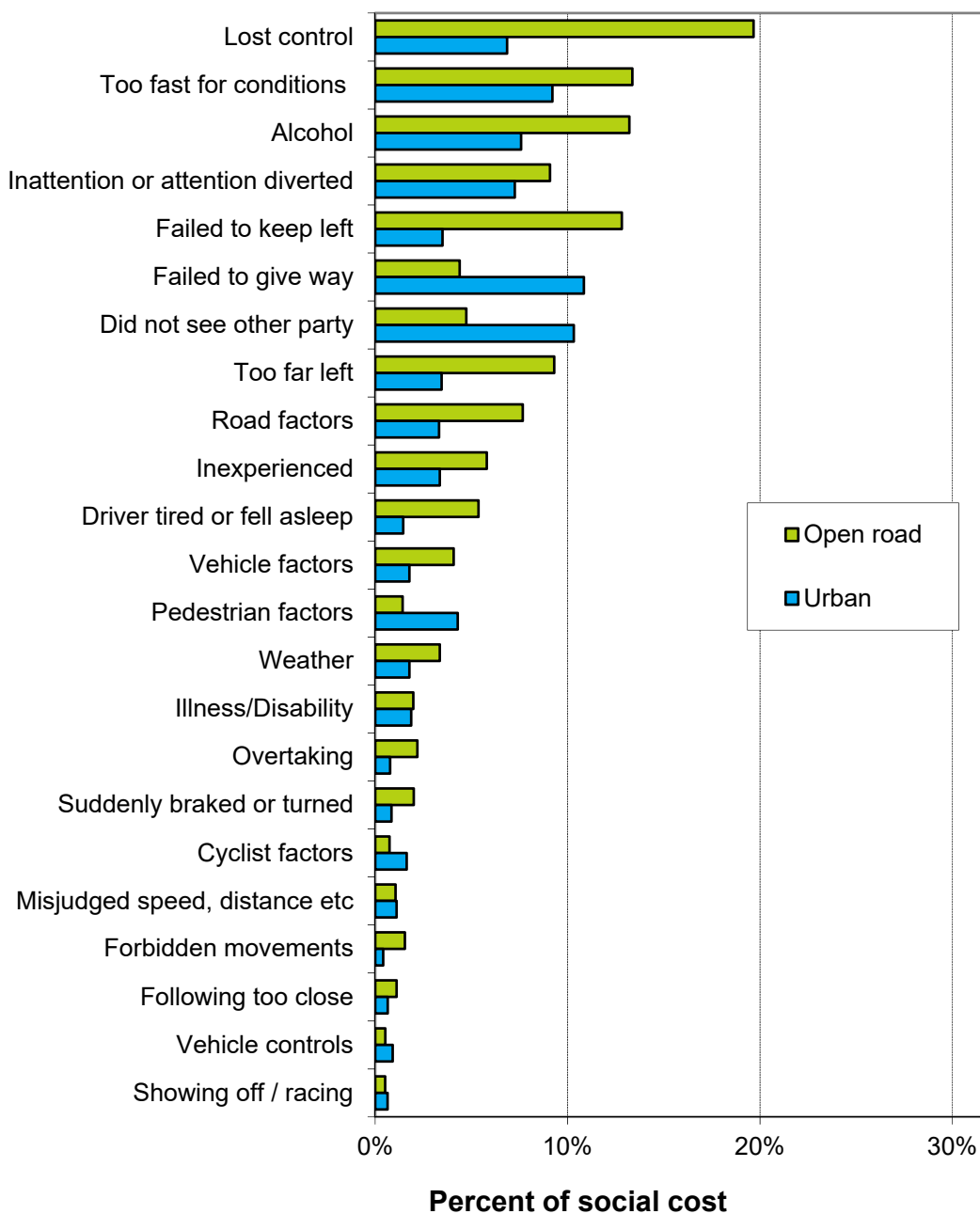
Crash outcomes and road user behaviour

Road Crash Data	2008	2009	2010	2011	2012	2013	2014	2015	2016	2017	2018
Deaths											
Number of road deaths	366	384	375	284	308	253	293	319	327	378	379
Deaths per 10,000 vehicles	1.1	1.2	1.2	0.88	0.95	0.77	0.86	0.91	0.89	0.99	0.99
Deaths per 100,000 people	8.6	8.9	8.6	6.4	6.9	5.7	6.5	6.9	7.0	7.9	7.9
Injuries											
Reported injuries	15317	14625	14031	12574	12122	11781	11219	12270	12625	13881	14021
Number hospitalised (all discharges)	7570	7590	7360	6780	7070	7150	6940	7310	8040	8740	8875
Number hospitalised for over 1 day	3244	3042	2909	2707	2794	2886	2716	2902	3065	3387	3063
Number hospitalised for over 3 days	2210	2051	1918	1801	1872	1886	1752	1905	2001	2221	1903
Behavioural Measures											
Speed											
Rural speed, % over 100 km/h	30%	29%	29%	31%	25%	25%	22%	23%	n/a	n/a	n/a
Rural speed, mean (km/h)	96.6	96.3	96.2	96.5	95.6	95.7	95.3	95.7	n/a	n/a	n/a
Rural speed, 85th percentile (km/h)	103	103	103	103	102	102	101	101	n/a	n/a	n/a
Alcohol											
Number of drivers killed with excess alcohol	59	66	68	48	49	38	31	51	50	n/a	n/a
Percent of drivers killed with excess alcohol	28%	28%	30%	26%	27%	23%	18%	25%	23%	n/a	n/a
Occupant Restraints											
Seat belts worn by adults, front	95%	95%	96%	96%	96%	n/a	97%	n/a	97%	n/a	n/a
Seat belts worn by adults, rear	87%	87%	88%	90%	n/a	n/a	92%	n/a	n/a	n/a	n/a
Child restraints used, 0-4 years	90%	91%	93%	n/a	92%	n/a	93%	n/a	93%	n/a	n/a
Cycle helmets											
Cycle helmets worn, weekday	92%	92%	93%	93%	92%	n/a	n/a	94%	n/a	n/a	n/a

Note: Road deaths for 2018 are for the 12 months to the end of August 2018. Reported injuries and Hospitalisations are for the 12 months to the end of March 2018.

Factors contributing to crashes – ranked by social cost*

Factors contributing to crashes



Notes: Crash data for the 12 months to the end of March 2018.

Since there can be several contributing factors for a single crash the figures represented in this graph add to more than 100%.

Alcohol data is not comparable to earlier years due to changes in the crash reporting process.

* Social cost calculations include loss of life or life quality, loss of output due to injuries, medical and rehabilitation costs, legal and court costs and property damage.