

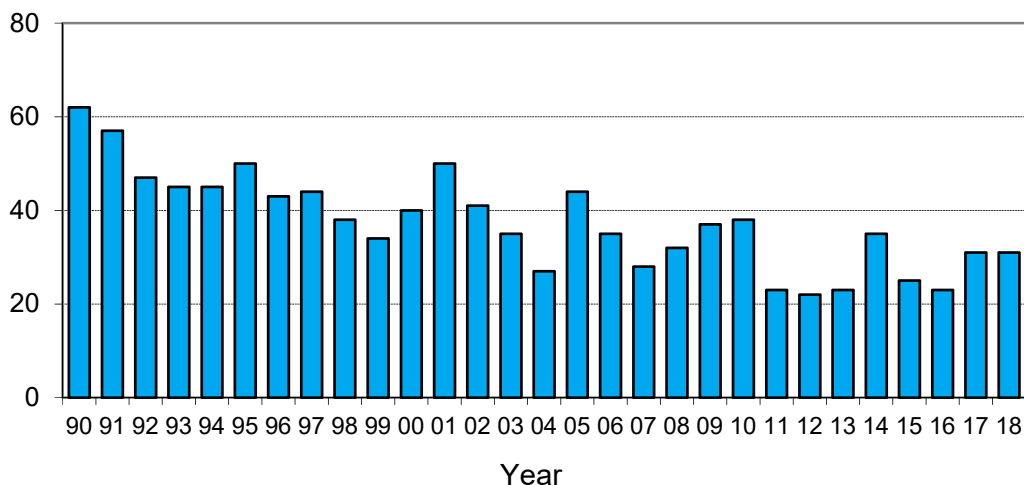
Monthly road crash statistics update

May deaths (2018)

The data presented here are provisional. Crash data as at 21st June 2018.

- Thirty-one people died on New Zealand roads in May. This is equal to the number which died in May 2017 and is four more than the average number of May road deaths over the past five years.

May deaths



- To the end of May this year, 164 people have died on New Zealand roads. This is ten more than at the same time last year.
- In the 12 months to the end of May 2018, 388 people died on our roads. This is ten more than the 12 months to the end of May 2017.
- During May: twelve of the deaths were car or van drivers plus four passengers, three were SUV drivers plus one passenger, four were motorcyclists, five were pedestrians, and two cyclists.
- Twenty of the thirty-one deaths were in open road crashes. Eight were in single vehicle crashes in which a driver lost control of the vehicle or ran off the road, eleven were in head-on collisions and four were in intersection collisions.
- One of the thirty-one deaths were in collisions involved a truck.
- Of the twenty vehicle occupants who died, four were not restrained at the time of the crash.

Deaths and Police reported injuries by age, sex and type of road user

Deaths are for the 12 months to the end of May 2018. Reported injuries are for the 12 months to the end of December 2017.

Note: Preliminary fatal crash reports are submitted within 24 hours of a crash related death. Full injury crash reports are submitted only after the crash investigations are completed, so there is a lag in the reporting of injury crashes.

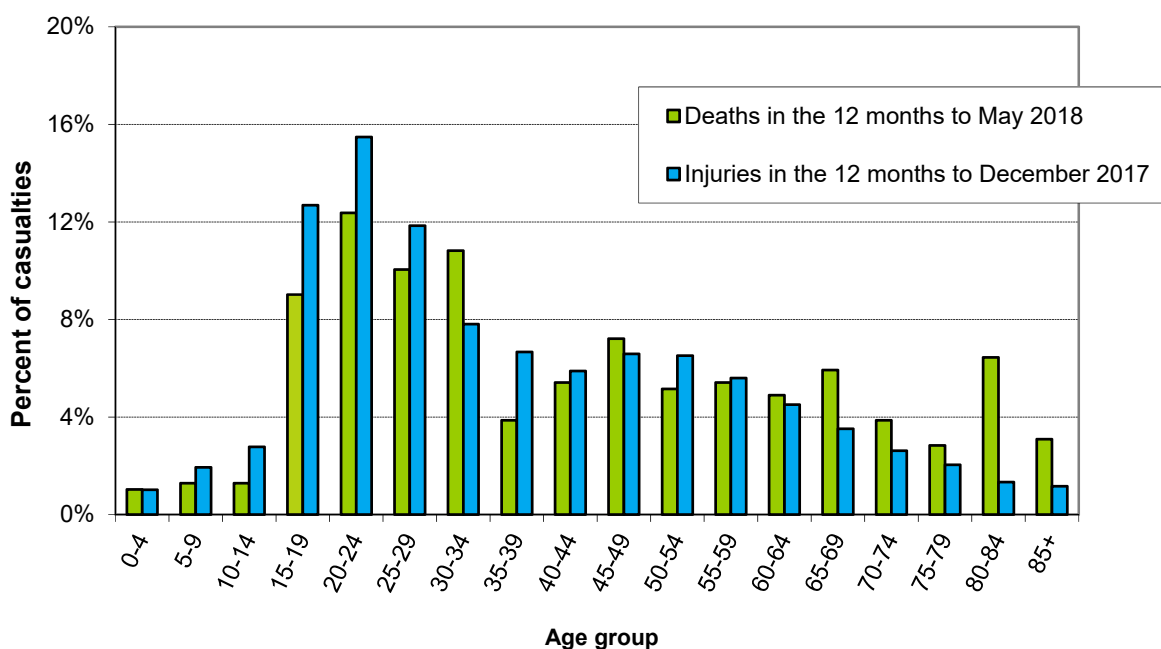
Road user type by sex

Sex	Drivers		Passengers		Motorcyclists		Pedestrians		Cyclists		Other		Total	
	Killed	Injured	Killed	Injured	Killed	Injured	Killed	Injured	Killed	Injured	Killed	Injured	Killed	Injured
Male	139	4334	46	1331	51	1114	23	512	12	586	1	34	272	7911
Female	57	3353	36	1731	6	198	15	456	2	202	0	14	116	5954
Total	196	7687	82	3062	57	1312	38	968	14	788	1	48	388	13865
%male	71%	56%	56%	43%	89%	85%	61%	53%	86%	74%	100%	71%	70%	57%

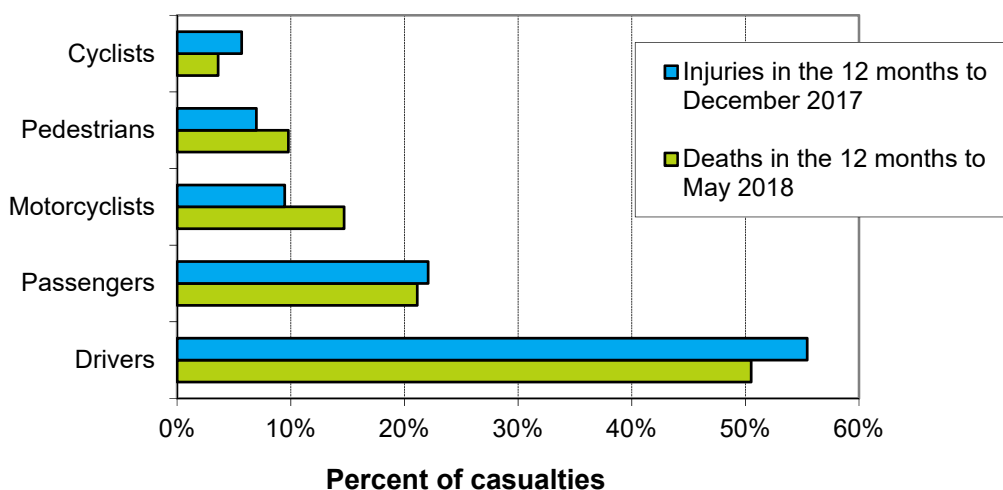
Road user type by age group

Age group	Drivers		Passengers		Motorcyclists		Pedestrians		Cyclists		Other		Total	
	Killed	Injured	Killed	Injured	Killed	Injured	Killed	Injured	Killed	Injured	Killed	Injured	Killed	Injured
Under-15	1	10	10	438	0	15	1	209	2	87	0	25	14	784
15-24	45	2056	22	1128	10	355	4	177	2	132	0	4	83	3852
25-34	40	1701	20	512	13	257	8	114	0	104	0	0	81	2688
35-44	21	1107	3	236	7	167	4	89	1	115	0	3	36	1717
45-54	21	1034	5	242	15	276	3	71	4	166	0	3	48	1792
55-64	20	837	8	180	8	164	2	109	1	90	1	3	40	1383
65-74	20	517	5	130	4	60	6	81	3	49	0	2	38	839
75+	28	403	9	97	0	8	10	91	1	13	0	8	48	620
Unknown	0	22	0	99	0	10	0	27	0	32	0	0	0	190
Total	196	7687	82	3062	57	1312	38	968	14	788	1	48	388	13865

Deaths and reported injuries by age group

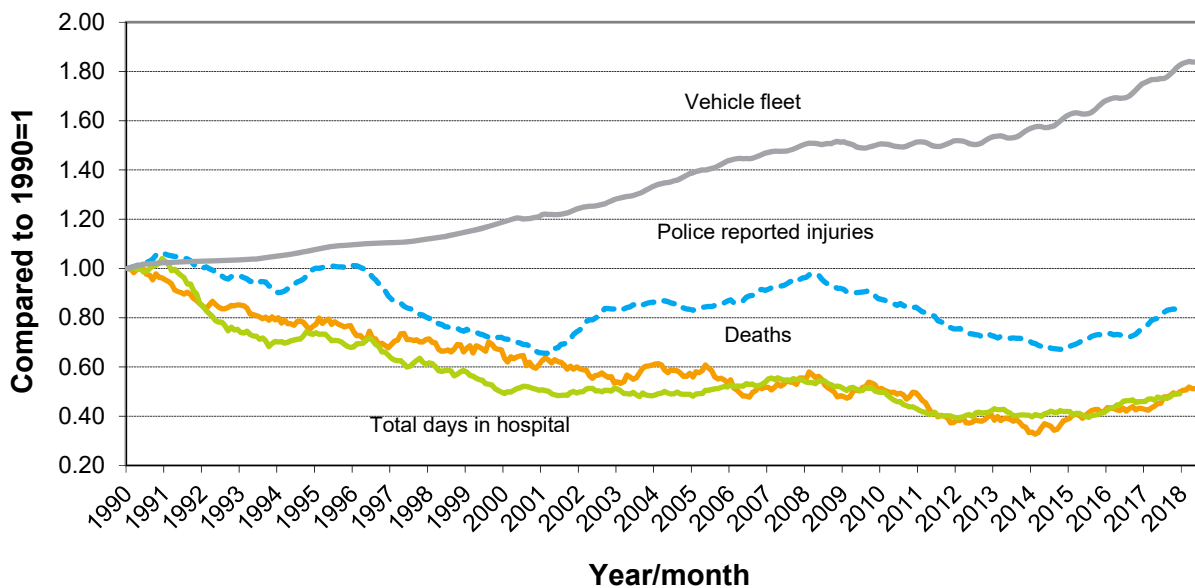


Types of road users killed and injured



Trends

Road crash casualties and vehicle fleet compared to 1990



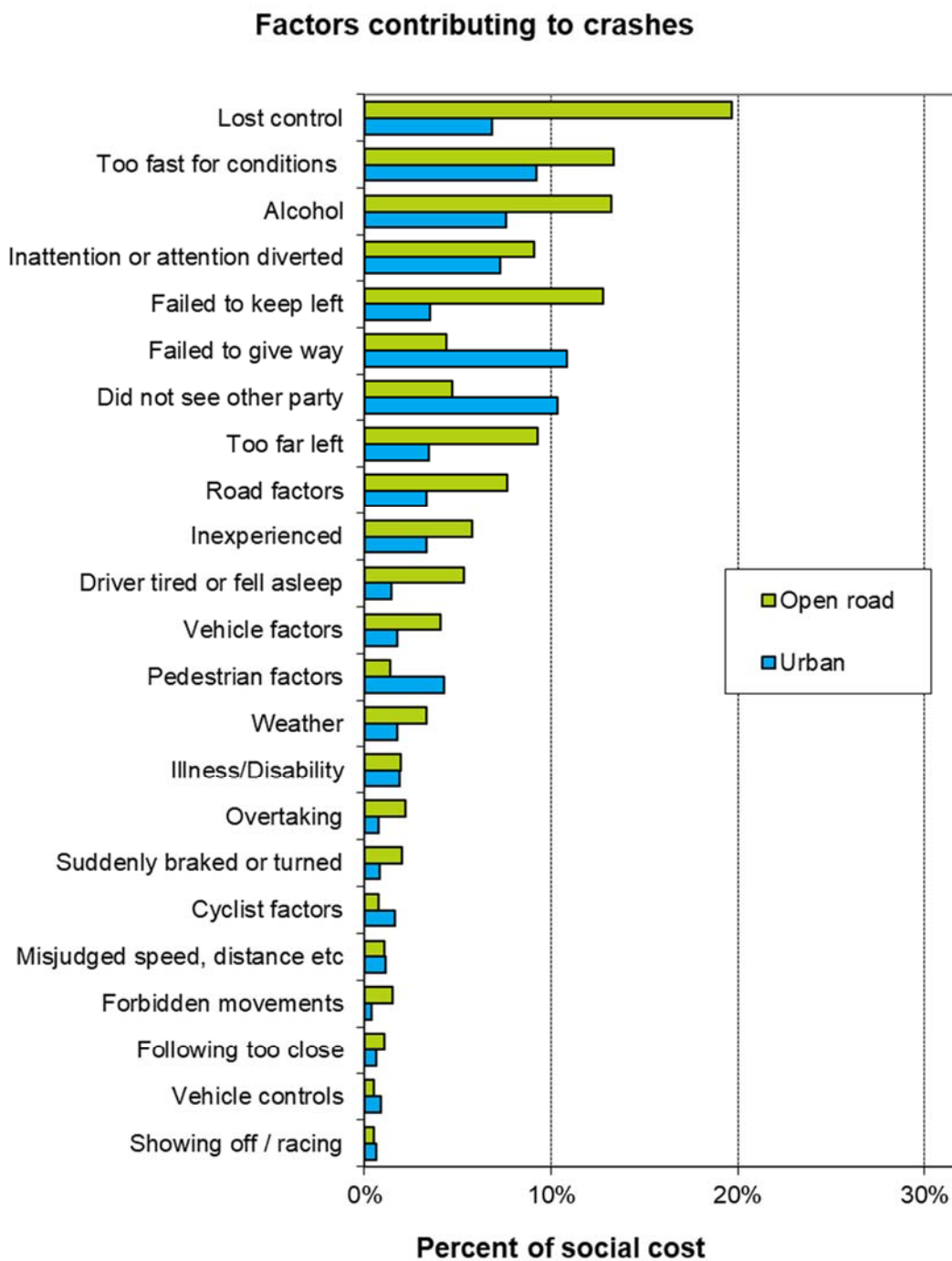
Since 1990, the number of vehicles on the road has increased by 84 percent while Police reported injuries have dropped by 17 percent, road deaths have dropped by 49 percent and the number of days spent in hospital as a result of road crashes has dropped by 51 percent.

Crash outcomes and road user behaviour

Road Crash Data	2008	2009	2010	2011	2012	2013	2014	2015	2016	2017	2018
Deaths											
Number of road deaths	366	384	375	284	308	253	293	319	327	378	388
Deaths per 10,000 vehicles	1.1	1.2	1.2	0.88	0.95	0.77	0.86	0.91	0.89	0.99	1.01
Deaths per 100,000 people	8.6	8.9	8.6	6.4	6.9	5.7	6.5	6.9	7.0	7.9	8.1
Injuries											
Reported injuries	15317	14625	14031	12574	12122	11781	11219	12270	12249	13873	
Number hospitalised (all discharges)	7570	7590	7360	6780	7070	7150	6940	7310	8040	8675	
Number hospitalised for over 1 day	3244	3042	2909	2707	2794	2886	2716	2902	3064	3348	
Number hospitalised for over 3 days	2210	2051	1918	1801	1872	1886	1752	1905	2000	2203	
Behavioural Measures											
Speed											
Rural speed, % over 100 km/h	30%	29%	29%	31%	25%	25%	22%	23%	n/a	n/a	
Rural speed, mean (km/h)	96.6	96.3	96.2	96.5	95.6	95.7	95.3	95.7	n/a	n/a	
Rural speed, 85th percentile (km/h)	103	103	103	103	102	102	101	101	n/a	n/a	
Alcohol											
Number of drivers killed with excess alcohol	59	66	68	48	49	38	31	51	50		
Percent of drivers killed with excess alcohol	28%	28%	30%	26%	27%	23%	18%	25%	23%		
Occupant Restraints											
Seat belts worn by adults, front	95%	95%	96%	96%	96%	n/a	97%	n/a	97%	n/a	
Seat belts worn by adults, rear	87%	87%	88%	90%	n/a	n/a	92%	n/a	n/a	n/a	
Child restraints used, 0-4 years	90%	91%	93%	n/a	92%	n/a	93%	n/a	93%	n/a	
Cycle helmets											
Cycle helmets worn, weekday	92%	92%	93%	93%	92%	n/a	n/a	94%	n/a	n/a	

Note: Road deaths for 2018 are for the 12 months to the end of May 2018. Reported injuries and Hospitalisations for 2017 are for the 12 months to the end of December 2017.

Factors contributing to crashes – ranked by social cost*



Notes: Crash data for the 12 months to the end of December 2017.

Since there can be several contributing factors for a single crash the figures represented in this graph add to more than 100%.

Alcohol data is not comparable to earlier years due to changes in the crash reporting process.

* Social cost calculations include loss of life or life quality, loss of output due to injuries, medical and rehabilitation costs, legal and court costs and property damage.