



**Rail safety statistics**  
Six monthly statistics  
for the period ended  
30 June 2014

August 2014

## Disclaimer

All reasonable endeavours are made to ensure the accuracy of the information in this report. However, the information is provided without warranties of any kind including accuracy, completeness, timeliness or fitness for any particular purpose.

The Ministry of Transport excludes liability for any loss, damage or expense, direct or indirect, and however caused, whether through negligence or otherwise, resulting from any person or organisation's use of, or reliance on, the information provided in this report.

The information in this report is made freely available to the public and may be used subject to these terms.

This document, and the information contained within it, can be copied, distributed, adapted and otherwise used provided that –

- ▶ the Ministry of Transport is attributed as the source of the material
- ▶ the material is not misrepresented or distorted through selective use of the material
- ▶ images contained in the material are not copied

The terms of the Ministry's copyright and disclaimer apply.

## Contents

Disclaimer	2
Contents	2
Rail safety statistics	3
Key points	3
Rail occurrences by type	4
Casualties from rail accidents	4
Rail occurrences by local government region	5
Level crossings	6
Obstruction	8
Person on track	9
Vandalism	10
Fire	10
Derailment	11
Operating	12
Time series casualty data	13

## Rail safety statistics

This report is based on rail occurrence reports provided by rail operators. These reports cover a wide range of occurrences including both accidents (events that caused death, injury or significant property damage) and incidents (events that placed, or could have placed, someone or something at risk of death, injury or significant property damage). Only a relatively small number of occurrences result in injury or significant property damage. The less serious occurrences are useful for identifying potential safety issues. This report presents both the number of occurrences and the number of deaths and injuries from accidents.

### Key points

For the six months period 1 January – 30 June 2014 there were:

1614	reported occurrences, resulting in
5	deaths
55	injuries
4	deaths in level crossing accidents
7	injuries in level crossing accidents
1	death in person on track accidents
3	injuries in person on track accidents
0	deaths in operating and other accidents
45	injuries in operating and other accidents

In the 12 months from 1 July 2013 – 30 June 2014 there were:

3096	reported occurrences, resulting in
10	deaths
98	injuries
7	deaths in level crossing accidents
18	injuries in level crossing accidents
3	deaths in person on track accidents
4	injuries in person on track accidents
0	deaths in operating and other accidents
76	injuries in operating and other accidents

### NOTES:

- A database was initiated during 1993 to collate information about rail occurrences. Previously the only rail safety data collected at a national level was for level crossing motor vehicle crashes attended by the Police.
- Occurrence reports are provided to the Ministry of Transport and the NZ Transport Agency by rail operators, usually within 72 hours of the occurrence or when enough information has been compiled.
- Rail deaths can include suicides.
- Caution should be exercised in interpreting the statistics in this report given the small number in some categories and the short time periods involved.
- Since late 2011 the NZ Transport Agency and rail operators have been working together to improve the reporting of all occurrences, including near misses and behaviour or situations that could lead to accidents. This helps to identify safety issues before they result in accidents that cause injury or property damage. It is likely that some of the increase in reported occurrences from earlier reports is due to this focus on improved reporting, rather than a decrease in safety, but this has not been analysed in detail.

## Rail occurrences by type

Occurrence category	Jan – Jun 2014	Jul 2013 – Jun 2014
Collisions (between rail vehicles)	29	57
Derailments (of rail vehicles)	103	206
Fires (on trains/by track)	64	111
Level crossing	158	295
Obstruction	165	315
Operating	772	1485
Person on track	215	408
Shunting	2	5
Vandalism	90	174
Other	16	40
<b>Total</b>	<b>1614</b>	<b>3096</b>

## Casualties from rail accidents

Accident category	Jan – Jun 2014			Jul 2013 – Jun 2014		
	Deaths	Serious injuries	Minor injuries	Deaths	Serious injuries	Minor injuries
Collisions (between rail vehicles)	-	-	-	-	-	-
Derailments (of rail vehicles)	-	-	-	-	-	-
Fires (on trains/by track)	-	-	1	-	-	1
Level crossing	4	1	6	7	7	11
Obstruction	-	1	3	-	1	3
Operating	-	1	39	-	1	69
Person on track	1	-	3	3	-	4
Shunting	-	-	-	-	-	-
Vandalism	-	-	-	-	-	1
Other	-	-	-	-	-	-
<b>Total number of casualties</b>	<b>5</b>	<b>3</b>	<b>52</b>	<b>10</b>	<b>9</b>	<b>89</b>

## Rail occurrences by local government region

Local govt region	Jan – Jun 2014	Jul 2013 – Jun 2014
Northland	8	26
Auckland	410	753
Waikato	102	208
Bay of Plenty	98	154
Gisborne	-	-
Hawke's Bay	23	66
Taranaki	34	64
Manawatu-Wanganui	154	315
Wellington	365	749
Nelson-Marlborough-Tasman	44	86
West Coast	68	117
Canterbury	237	434
Otago	46	80
Southland	25	44
<b>TOTAL</b>	<b>1614</b>	<b>3096</b>

## Level crossings

**Definition:** occurrences at a level crossing (public or private) involving a motor vehicle, a pedestrian or a pedal cyclist. Occurrence reports may include information about the type of protection present at the level crossing.

### Number of level crossing occurrences

Occurrence type	Jan – Jun 2014	Jul 2013 – Jun 2014
Level crossing – collision with motor vehicle	11	23
Level crossing – near collision with motor vehicle	87	165
Level crossing – collision involving a pedestrian or pedal cyclist	2	4
Level crossing – near collision involving a pedestrian or pedal cyclist	8	13
Level crossing – other	50	90
<b>TOTAL</b>	<b>158</b>	<b>295</b>

### Type of protection present and working for level crossing occurrences

Protection type	Jan – Jun 2014		Jul 2013 – Jun 2014	
	Present	Working	Present	Working
Flashing lights and bells (FLB)	35	32	67	62
Half arm barriers with lights and bells (HAB)	35	27	77	66
Stop signs/St Andrews signs	33	33	60	60
<b>TOTAL</b>	<b>103</b>	<b>92</b>	<b>204</b>	<b>188</b>

None	3	-	5	-
Not known	52	-	86	-

### Type of protection present and working for level crossing collision with motor vehicle

Protection type	Jan – Jun 2014		Jul 2013 – Jun 2014	
	Present	Working	Present	Working
Flashing lights and bells (FLB)	2	2	6	6
Half arm barriers with lights and bells (HAB)	1	1	2	2
Stop signs/St Andrews signs	8	8	15	15
<b>TOTAL</b>	<b>11</b>	<b>11</b>	<b>23</b>	<b>23</b>

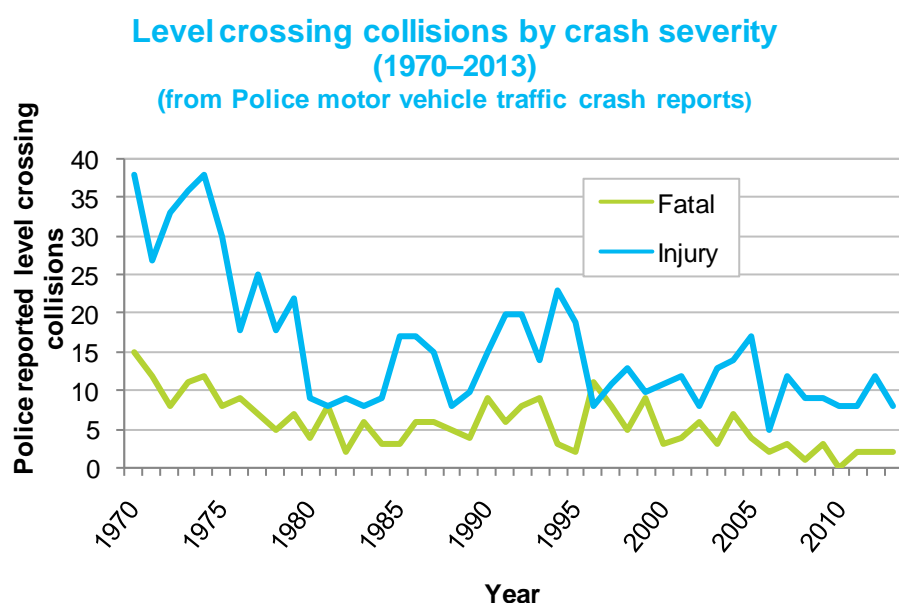
None	1	-	1	-
Not known	-	-	-	-

## Crashes and casualties for level crossing collisions with motor vehicles (Crash Analysis System) <sup>(1)</sup>

Data derived from Police traffic crash reports of collisions with motor vehicles at level crossings.

Year	Crashes		Casualties		
	Total	Fatal	Deaths	Serious injuries	Minor injuries
2000	14	3	4	7	8
2001	16	4	4	-	18
2002	14	6	6	4	7
2003	16	3	3	10	7
2004	21	7	8	7	11
2005	21	4	4	8	14
2006	7	2	2	6	1
2007	15	3	5	6	13
2008	10	1	1	5	8
2009	12	3	4	8	6
2010	8	-	-	4	7
2011	10	2	2	5	8
2012	14	2	2	4	10
2013	10	2	2	8	10

The latest annual injury crash data available from the crash analysis system is for 2013.



**Note:** pre-1980 data are derived from historical records.

(1) the Crash Analysis System (CAS) is a tool available to registered users that manages, analyses and maps traffic crash and related data, based on Police traffic crash reports (TCR) forwarded to the NZ Transport Agency.

## Obstruction

**Definition:** occurrences where an object obstructing the rail corridor has been struck by a train or nearly been struck by a train. This excludes level crossing collisions.

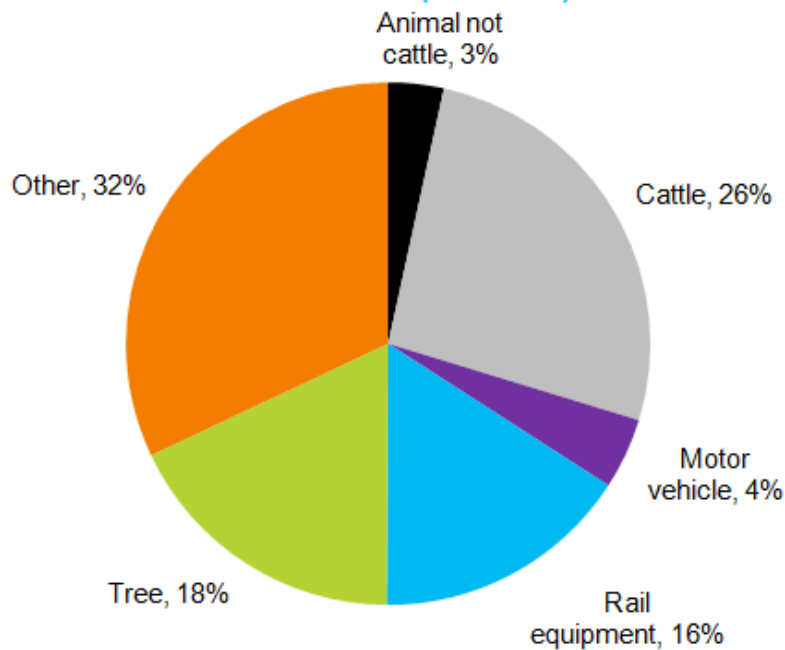
Overall there were 315 obstruction occurrences recorded for the last 12 months, with 191 of these being collisions.

### Obstruction 'collision with object' occurrences by type of object struck

Type of object struck	Jan – Jun 2014	Jul 2013 – Jun 2014
Animal not cattle	6	11
Cattle	27	44
Motor vehicle	3	7
Rail equipment	20	27
Rocks or stones	5	9
Slip	3	11
Tree	19	38
Other	23	44
<b>TOTAL</b>	<b>106</b>	<b>191</b>

**Note:** total may include unknown objects

Type of object struck by a train by percentage of reported obstruction – collisions (2011–2013)



**Note:** percentages have been rounded and may not add up to 100%

The 'Other' category covers a wide range of different objects including: shopping trolley, bicycle, ladder, metal scrap, rake, tyre and many others.



## Person on track

**Definition:** occurrences where a person on track (defined as being on or obstructing the rail corridor not at a level crossing) has been struck by a train, nearly struck by a train or observed to be present without a train being in the vicinity. These occurrences relate to members of the public trespassing in the rail corridor and can include suicides. Rail operator staff or contractors are included in the 'Operating' category.

### Number of occurrences

Occurrence type	Jan – Jun 2014	Jul 2013 – Jun 2014
Person on track – collision	4	10
Person on track – near collision	56	168
Person on track – other	155	230
<b>TOTAL</b>	<b>215</b>	<b>408</b>

### Historical time series of reported casualties by calendar year for person on track collisions

Year	Deaths	Serious injuries	Minor injuries
2000	17	2	1
2001	11	2	3
2002	10	5	2
2003	14	5	3
2004	5	-	1
2005	9	-	1
2006	14	7	1
2007	3	6	1
2008	7	3	1
2009	7	2	1
2010	9	1	-
2011	11	2	3
2012	16	5	1
2013	6	2	-

## Vandalism

**Definition:** occurrences where an object has been thrown at a train, an object has been deliberately placed on the track, or rail property has been altered deliberately or stolen.

### Number of occurrences

Occurrence type	Jan – Jun 2014	Jul 2013 – Jun 2014
Vandalism – object placed on track	7	7
Vandalism – object thrown at train	28	62
Vandalism – rail property vandalised	28	58
Vandalism – tagging	22	34
Vandalism – theft of rail property	1	8
Vandalism - other	4	5
<b>TOTAL</b>	<b>90</b>	<b>174</b>

### Vandalism – object thrown at train

Object thrown at train	Jan – Jun 2014	Jul 2013 – Jun 2014
Bottles	1	1
Rocks or stones	25	57
Unknown objects	1	2
Other	1	2
<b>TOTAL</b>	<b>28</b>	<b>62</b>

## Fire

**Definition:** occurrences where there was a fire either trackside by the rail corridor or on board a rail vehicle.

Fire location	Jan – Jun 2014	Jul 2013 – Jun 2014
Trackside fire	48	79
Fire on board a rail vehicle	16	32
<b>TOTAL</b>	<b>64</b>	<b>111</b>

## Derailment

**Definition:** occurrences where a train or rail vehicle has derailed while moving along a rail track. The type of rail vehicle that derailed is identified as best as possible from occurrence reports. Note: many of these derailments occur in rail yards during loading and shunting operations.

### Derailments by type of rail vehicle (including bogies)

Type of rail vehicle	Jan – Jun 2014		Jul 2013 – Jun 2014	
	On mainline	In yard	On mainline	In yard
Hi rail vehicle	1	3	4	5
Lead bogie	1	6	4	16
Locomotive	1	22	4	44
Passenger rail vehicle	-	1	-	1
Shunt	-	8	-	16
Trailing bogie	-	11	2	17
Wagon	7	42	10	83
<b>TOTAL</b>	<b>10</b>	<b>93</b>	<b>24</b>	<b>182</b>

**Note:** a Hi rail vehicle is a general purpose rail capable truck, utility, car, bus or van, used to transport people, equipment or materials to a site, or to carry out on-rail tasks such as inspection, grease dispensing, weed spraying, drain cleaning etc. For more detail, please go to <http://www.kiwirail.co.nz/glossary-of-terms.html>

## Operating

**Definition:** occurrences that occur during the course of rail operations in motion but excludes those categorised as derailments, collisions or shunting occurrences.

### Operating occurrences by type

Occurrence type	Jan – Jun 2014	Jul 2013 – Jun 2014
Illegal passenger on train	27	44
Infrastructure	311	578
Level crossing alarm failure	4	13
Load related	87	157
Near collision	11	22
Rolling stock	7	16
SPAD related	119	257
Track warrant irregularity	7	14
Track occupancy irregularity	28	47
Other	171	337
<b>TOTAL</b>	<b>772</b>	<b>1485</b>

**Note:** SPAD = signals passed at danger.

## Time series casualty data

### Deaths and reported injuries for motor vehicle crashes at a level crossing in the Crash Analysis System (CAS)

		Year										
		2003	2004	2005	2006	2007	2008	2009	2010	2011	2012	2013
Motor vehicle level crossing casualties	Deaths	3	8	4	2	5	1	4	0	2	2	2
	Injuries	17	18	22	7	19	13	14	11	13	14	18

The latest annual injury crash data available from the CAS is for 2013.

**Note:** The number of level crossing deaths in CAS may be lower than the number in the rail occurrence database as CAS includes only official road deaths. Deaths determined by the coroner to be a result of medical events or suicide are not included as official road deaths.

Reported injury numbers may differ between the two systems. CAS includes road crashes attended and reported by Police.

### Deaths and reported injuries for grouped rail accident types in the rail occurrence database

		Year										
		2003	2004	2005	2006	2007	2008	2009	2010	2011	2012	2013
Motor vehicle level crossing casualties	Deaths	4	7	5	2	6	3	4	0	2	2	2
	Injuries	10	16	18	6	14	8	8	9	13	7	14
Pedestrian level crossing casualties	Deaths	2	4	3	2	0	1	0	1	0	4	3
	Injuries	1	0	0	0	0	2	0	0	0	0	1
Pedal cyclist level crossing casualties	Deaths	0	0	0	0	1	0	0	0	0	0	0
	Injuries	1	1	0	0	0	0	0	1	0	2	0
Person on track casualties	Deaths	14	5	9	14	3	7	7	9	11	16	6
	Injuries	8	1	1	8	7	4	3	1	5	6	2
Other casualties - members of the public	Deaths	1	0	0	0	1	2	1	0	0	1	1
	Injuries	24	22	14	22	1	4	13	24	27	16	15
Other casualties - rail employees	Deaths	0	0	0	0	0	0	0	0	0	0	0
	Injuries	31	14	19	17	13	12	10	13	42	106	94
All rail accident deaths and injuries	Deaths	21	16	17	18	11	13	12	10	13	23	11
	Injuries	75	54	52	53	35	30	34	48	87	138	126

Statistics prepared by Financial, Economic and Statistical Analysis, Ministry of Transport. Enquiries regarding these statistics may be directed to Financial, Economic and Statistical Analysis, Ministry of Transport, PO Box 3175, Wellington or by email on [info@transport.govt.nz](mailto:info@transport.govt.nz).

For further information on crash statistics see *Motor Vehicle Crashes in New Zealand*, the annual statistical statement produced by the Ministry of Transport. This publication is available online at [www.transport.govt.nz](http://www.transport.govt.nz)